



# SELFLEVEL® Concrete Access Assembly

The concrete SELFLEVEL Access Solution has been designed specifically for concrete applications. By incorporating adjustment brackets into the design, the frame can be held up during the concrete installation. After the concrete cures, the brackets should be removed, and the upper frame will move with the pavement.

This product is ideal for environments with frost heave, as the frame floats with the surface. It also works well for communities with a smooth street initiative, or inclined installations.

### Standard Features

- Heavy duty
- Upper frame is supported by road surface, and can be installed with a maximum tip angle of 5°
- Steel sleeve protects the unit (SELFLEVEL) from concrete interference
- Lifting handles on upper frame allow for easier handling during installation
- Lower frame is bolted to structure below
- Proof load exceeds AASHTO M 306 standards
- Frame fits with existing manhole covers

### Options

- Special lettered covers
- Custom logo covers
- ERGO® SELFLEVEL assembly
- Transitional frame (square base to round top)
- EON LOCK®
- Cam lock
- Neoprene gasket for cover
- Watertight\*
- INFRA-RISER® adjustment riser
- Multiple frame openings and heights available

\*Bolted assembly required.



The SELFLEVEL® access assembly is a highly engineered infrastructure solution. It provides additional benefits that a traditional manhole unit cannot provide. Its unique design allows a range of movement, providing installations that are perfectly aligned with the finished road surface.

### Reduce Surface Movement Issues

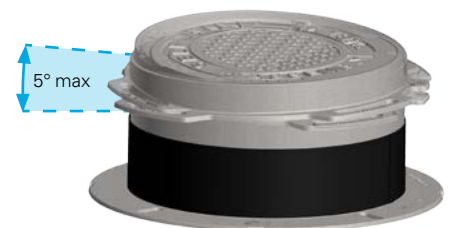


#### SELFLEVEL® Access Assembly Helps Eliminate:

- Frost heave/uplift
- Manhole structure settling
- Site deterioration
- Pavement cracking

#### SELFLEVEL® Access Assembly Also Provides:

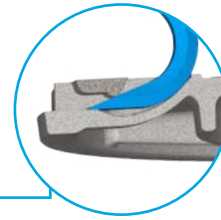
- Improved ride quality to meet smooth street initiatives
- Inclined installations



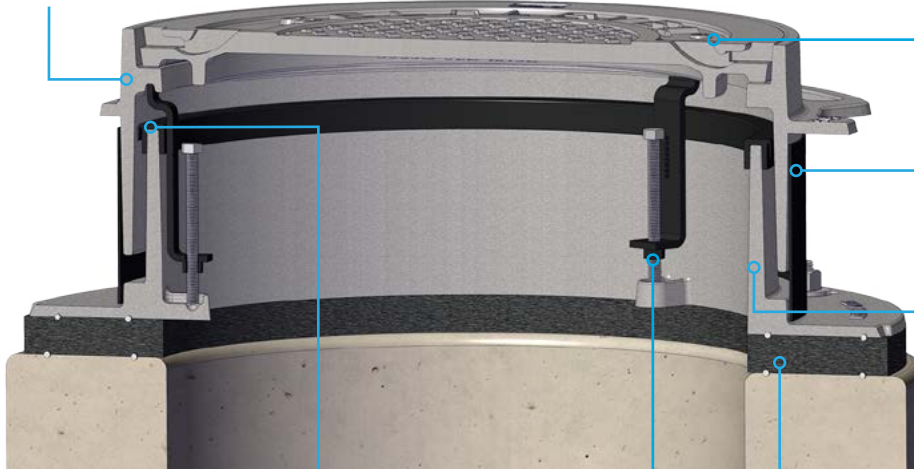
SELFLEVEL has a range of motion of up to a 5° tip angle while still moving with surface

**Upper Frame**

The upper frame of the SELFLEVEL assembly is supported by and moves with the surrounding road surface. This allows it to remain level with the road surface. This “floating” effect helps prevent road damage and protects the infrastructure underground by dispersing traffic vibrations and shock throughout the road surface, rather than into the structure below.



**EPIC® Pick Bar**



**Steel Sleeve**

Creates a void, while pouring concrete, to allow upper frame to float with the road surface.

**Guide Frame**

This frame facilitates self-centering. The guide frame comes with a multi-functional seal. It reduces water infiltration and protects against excess debris and material from entering the manhole.

**Multi-functional Seal**

The multi-functional seal helps keep the upper frame centered, which prevents the two pieces from touching.



Optional INFRA-RISER® Rubber Composite Adjustment Riser.



**Adjustment Tab and Bracket**

Adjustment bracket and bolt for raising the upper frame up off the lower frame during pouring, giving it clearance to ‘float’ when set in concrete. After concrete has cured, the bracket and bolt are removed and can be reused. Adjustment bolt tabs can be cut off for greater clear opening after installation.

SELFLEVEL Concrete Assembly Sizes

Cover Size	Clear Opening	Series No.
26	24	3025
32	30	3027

Note: All dimensions are in inches.



Visit our YouTube Channel for videos on this and other products at [www.youtube.com/AccessInfrastructure](http://www.youtube.com/AccessInfrastructure)