



# ERGO® Access Assembly

The ERGO Access Solution has been designed with ergonomics in mind to optimize worker safety by incorporating a hinge feature.

The cover opens to 120°, where the cover securely rests and can be removed. The safety catch at 90° prevents accidental closure.

The ERGO access assembly is customizable to most city specifications with multiple frame openings and heights available. For clear openings greater than 28", please refer to the ERGO XL access assembly.

### Standard Features

- Heavy duty
- Gasketed
- Patented hinge assembly
- Opens to and removes at 120°
- Safety catch at 90°
- Hinge design allows for flood pressure relief — lid remains attached
- Ductile iron cover
- MPIC® multi-tool pick bar

### Options

- Available on SELFLEVEL®
- Special lettered covers
- Custom logo covers
- Environmental messaging
- Grates available
- Cam lock security
- Bolted EON LOCK® design
- Water resistant\*
- Multiple frame openings and heights available (see table)



ERGO access assembly in the City of St. Cloud, FL.



Showing 24" ERGO with cam lock



Drainage grate available for 24" ERGO



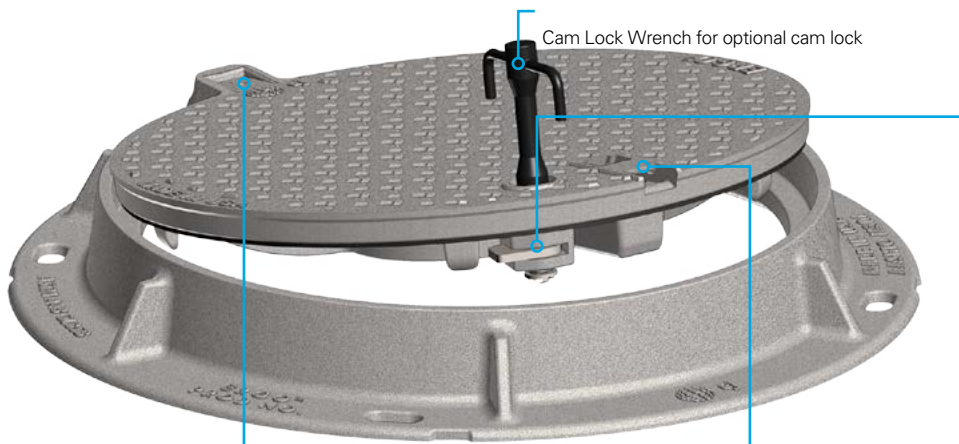
### T-Gasket

The thick and durable gasket cushions traffic shock and resists infiltration.



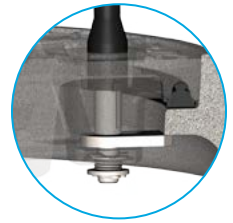
**Important Safety Information**  
Complete removal of the cover is recommended when entering the access point.

\*Using bolted cover, with no cam lock, and plug for hinge pocket.

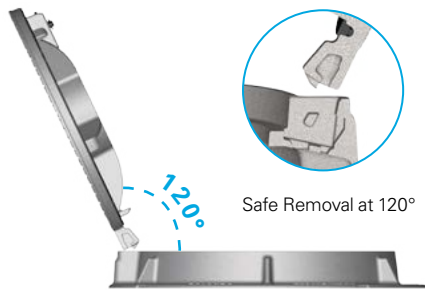


**Cam Lock Security Option**

The cam lock provides improved security to frame and cover assemblies, and also eliminates loose and missing fasteners. The cam lock wrench is only removable when the cover is in the locked position, ensuring it is engaged.

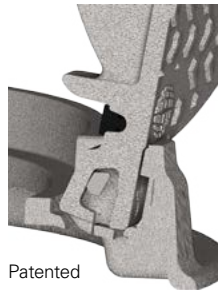


**Safe Cover Removal**



The patented hinge design allows the cover to open up to 120°, where it rests in a safe and secure position. From the 120° position, the cover can be safely removed.

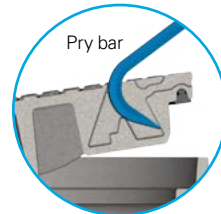
**Safety Catch**



Patented

Patented ERGO hinge design has a safety catch at 90° to prevent accidental closure.

**MPIC® Multi-tool Pick Bar**



Custom logo cover made from a photo of Mt. Edgecumbe, by local photographer Tim Shobe, for the City of Sitka, Alaska.

ERGO Frame Clear Openings and Heights

Clear Opening	Frame Height	Series No.
24	4	2404
24	6	2406
24	7	2407
28	7	2807

Note: All dimensions are in inches.



Visit our YouTube Channel for videos on this and other products at [www.youtube.com/AccessInfrastructure](http://www.youtube.com/AccessInfrastructure)