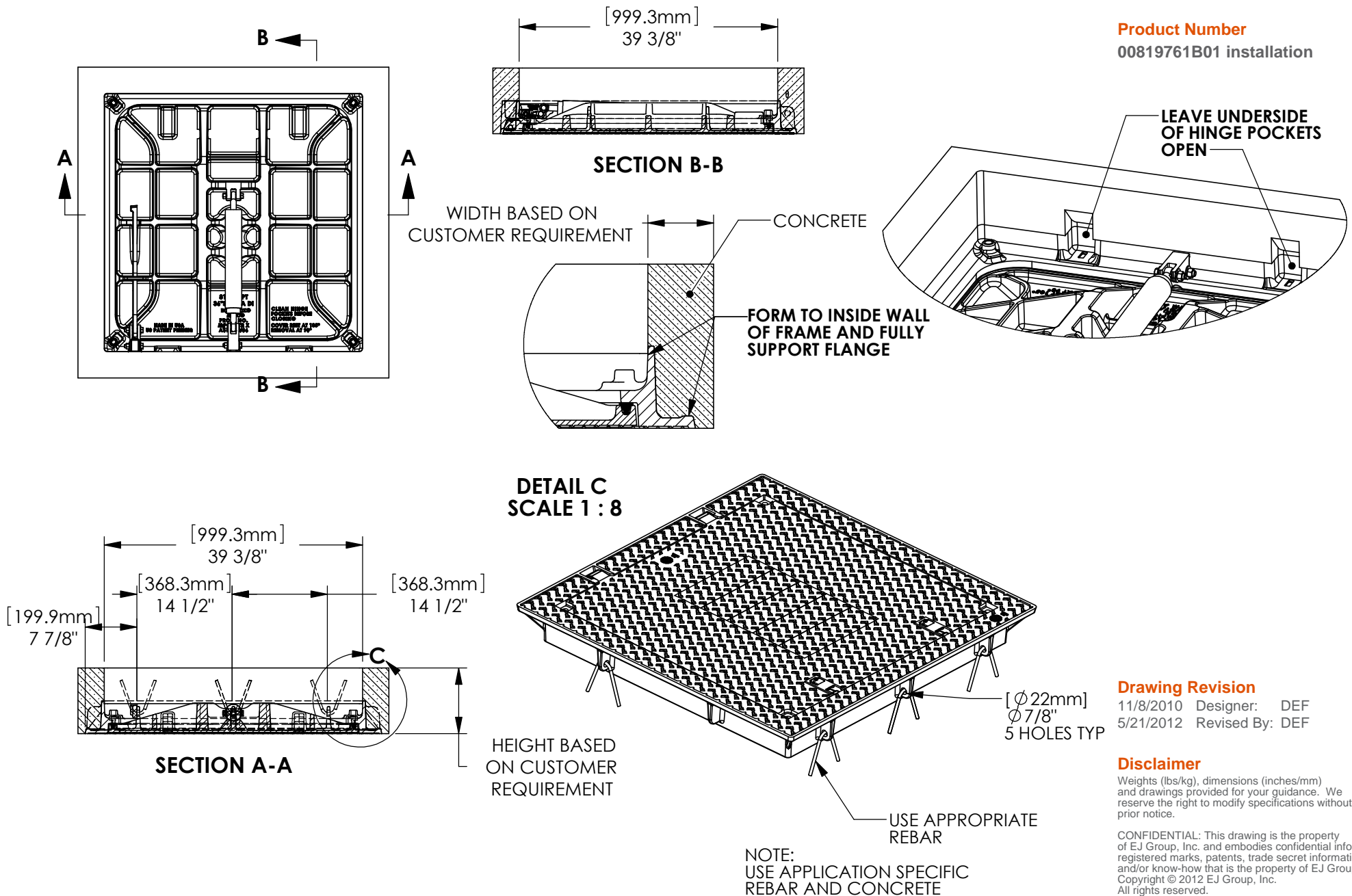


8197 TOP FLANGE INSTALLATION GUIDE



Product Number
00819761B01 installation



Drawing Revision
11/8/2010 Designer: DEF
5/21/2012 Revised By: DEF

Disclaimer
Weights (lbs/kg), dimensions (inches/mm) and drawings provided for your guidance. We reserve the right to modify specifications without prior notice.

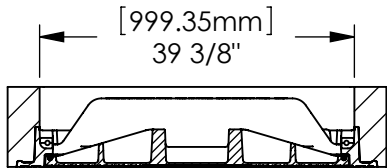
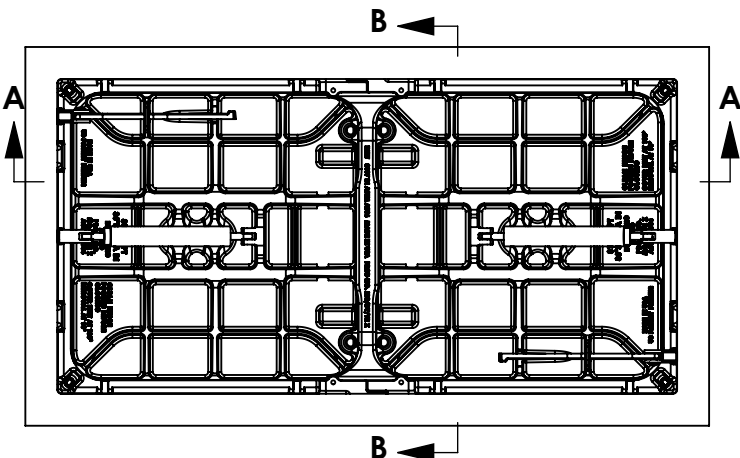
CONFIDENTIAL: This drawing is the property of EJ Group, Inc. and embodies confidential information, registered marks, patents, trade secret information, and/or know-how that is the property of EJ Group, Inc. Copyright © 2012 EJ Group, Inc. All rights reserved.

Contact
800 626 4653
ejco.com

8197 TOP FLANGE DOUBLE UNIT INSTALLATION GUIDE

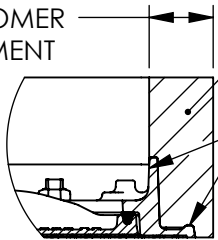


Product Number
00819761B03 installation



SECTION B-B

WIDTH BASED
ON CUSTOMER
REQUIREMENT

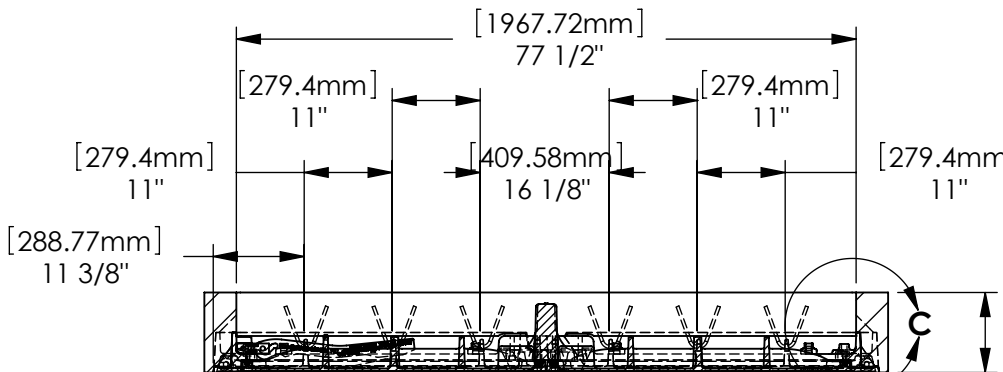
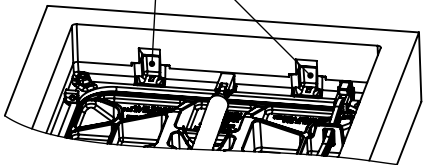


DETAIL C
SCALE 1 : 12

CONCRETE

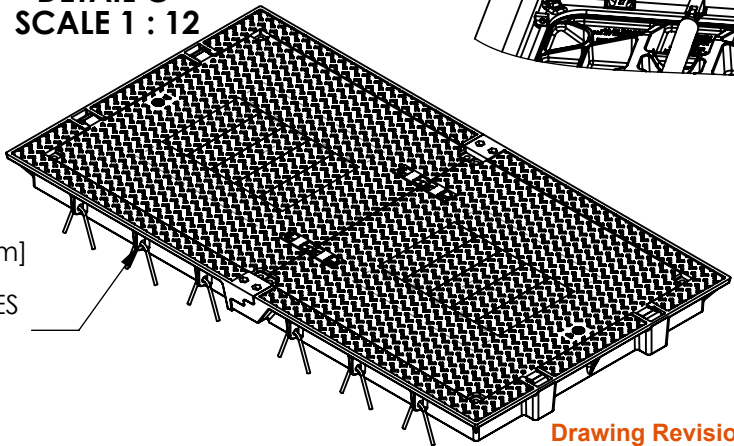
FORM TO INSIDE WALL
OF FRAME AND FULLY
SUPPORT FLANGE

LEAVE UNDERSIDE OF
HINGE POCKETS OPEN



SECTION A-A

HEIGHT BASED
ON CUSTOMER
REQUIREMENT



NOTE:
USE APPLICATION SPECIFIC
REBAR AND CONCRETE

Drawing Revision
11/23/2010 Designer: DEF
2/1/2012 Revised By: DEF

Disclaimer
Weights (lbs/kg), dimensions (inches/mm)
and drawings provided for your guidance. We
reserve the right to modify specifications without
prior notice.

CONFIDENTIAL: This drawing is the property
of EJ Group, Inc. and embodies confidential information,
registered marks, patents, trade secret information,
and/or know how that is the property of EJ Group, Inc.
Copyright © 2011 EJ Group, Inc.
All rights reserved.

Contact
800 626 4653
ejco.com