

Robinson Iron

*Amenities*

HOME

Architecture

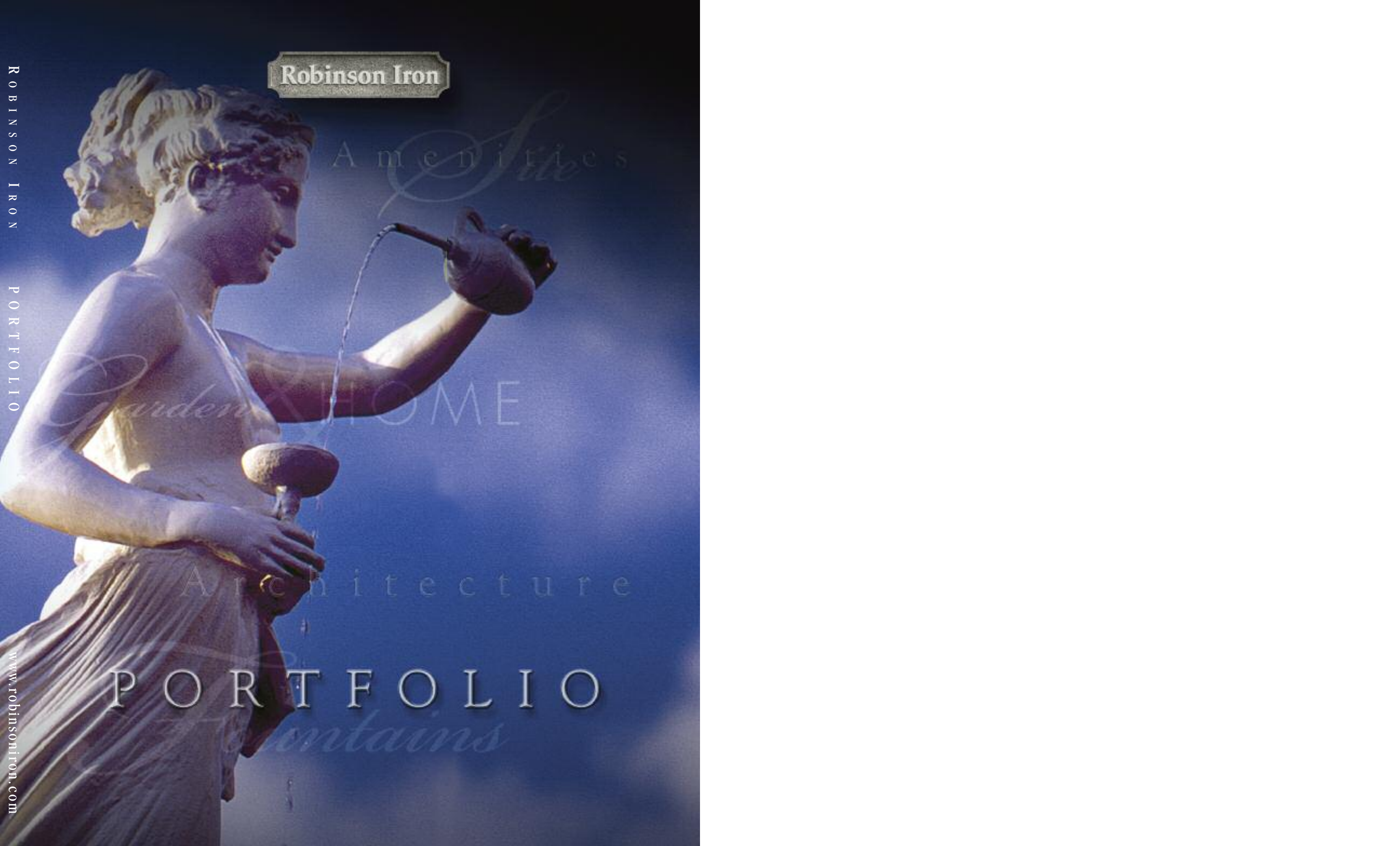
PORTFOLIO

*entains*

ROBINSON IRON

PORTFOLIO

www.robinsoniron.com



SARA AND JOE ROBINSON COLLECTED A FEW ANTIQUE IRON PATTERNS IN THE 1950'S AND BEGAN CASTING SPECIAL PIECES FOR FRIENDS. INTEREST GREW UNTIL IT WAS DECIDED A NEW COMPANY NAMED ROBINSON IRON WOULD MARKET A COMPLETE LINE OF FOUNTAINS FEATURING HISTORIC FOUNDRIES, SUCH AS J. L. MOTT, J. W. FISKE AND WOOD & PEROT. THIS WORK EXPANDED TO INCLUDE ARCHITECTURAL METALWORK AND HISTORICAL RESTORATION/CONSERVATION. TODAY THE COMPANY IS THE LARGEST MANUFACTURER OF LARGE-SCALE ORNAMENTAL CAST IRON FOUNTAINS AND IS PREEMINENT IN THE FIELDS OF ARCHITECTURE AND PRESERVATION.

THE FIRM EMPLOYS AN INCREDIBLY SPECIALIZED MIX OF ARTISTS, CRAFTS PERSONS, ENGINEERS, FOUNDRY MEN, FABRICATORS AND SALESPERSONS. THEY CAN ASSIST IN THE CONCEPTUALIZATION OF CUSTOM DESIGNS, PROVIDE COST ESTIMATES AND DEVELOP WORKING DRAWINGS. SPECIALTY ALLOYS AND FINISHES ARE AVAILABLE UPON REQUEST.

ROBINSON IRON'S WEBSITE [WWW.ROBINSONIRON.COM](http://WWW.ROBINSONIRON.COM) IS THE MOST COMPLETE SOURCE OF INFORMATION ABOUT OUR PRODUCTS AND SERVICES. DOWNLOADABLE DXF AND DWG FILES ARE AVAILABLE (INDICATED IN THIS CATALOG BY AN ICON). A RESUME OF PROJECTS CAN BE FOUND ONLINE AS WELL AS ISSUES OF "PORTFOLIO," A POPULAR QUARTERLY EMAILED NEWSLETTER.

Robinson Iron

# Portfolio

## C O N T E N T S

### 3 FOUNTAINS

5 LARGE SCALE

11 INTERMEDIATE

13 SMALL SCALE

### 19 ARCHITECTURE

21 COLUMN COMPONENTS

25 PAVILIONS

27 GATES AND FENCES

29 TRANSIT

31 KEY SPECIFICATIONS

### 33 SITE AMENITIES

35 BOLLARDS & LAMPOSTS

37 PLANTERS & MISCELLANEOUS

### 41 GARDEN & HOME

43 FURNITURE



47 STATUARY

50 MAILBOXES

51 URNS

### 55 ORDERING INFORMATION

LOOK FOR THESE SYMBOLS THROUGHOUT THIS PORTFOLIO REGARDING ADDITIONAL INFORMATION ON OUR WEBSITE

-  Components/drawings on website
-  Featured in our online newsletters

# FOUNTAINS

*Elegance*

**The center of attention.**



*F*ountains provide a striking focal point in any private garden or public square. Robinson Iron's classically inspired pieces may be combined in a variety of ways to form large, intermediate or small scale pieces. Used with either a masonry pool or cast iron basin they can be accessorized with submersible lighting and spray ring inserts.

**Kenilworth Mall Fountain**  
*Baltimore, Maryland*

The permanence and rich design of this three tier fountain makes a significant statement. The largest tier measures 9' 6" in diameter. Gentle waterplay adds important sound conditioning.

HEIGHT 14'  
BOWL DIAMETERS:  
1ST 9' 6", 2ND 6'  
3RD 3'  
WEIGHT 8,000 LBS.



# Large scale Fountains

**Bathing Boy**

HEIGHT 2' 3"  
WIDTH 1'

**Renaissance with Cranes  
(Clemens Gardens)**

*St. Cloud, Minnesota*

Antique patterns serve as the basis for this Victorian inspired fountain.

The centerpiece of Clemens Gardens, it supports spouting cranes and bathing boys. The figure of Hebe running with her cup to the table of the gods is modeled after the world famous piece sculpted by Canova.

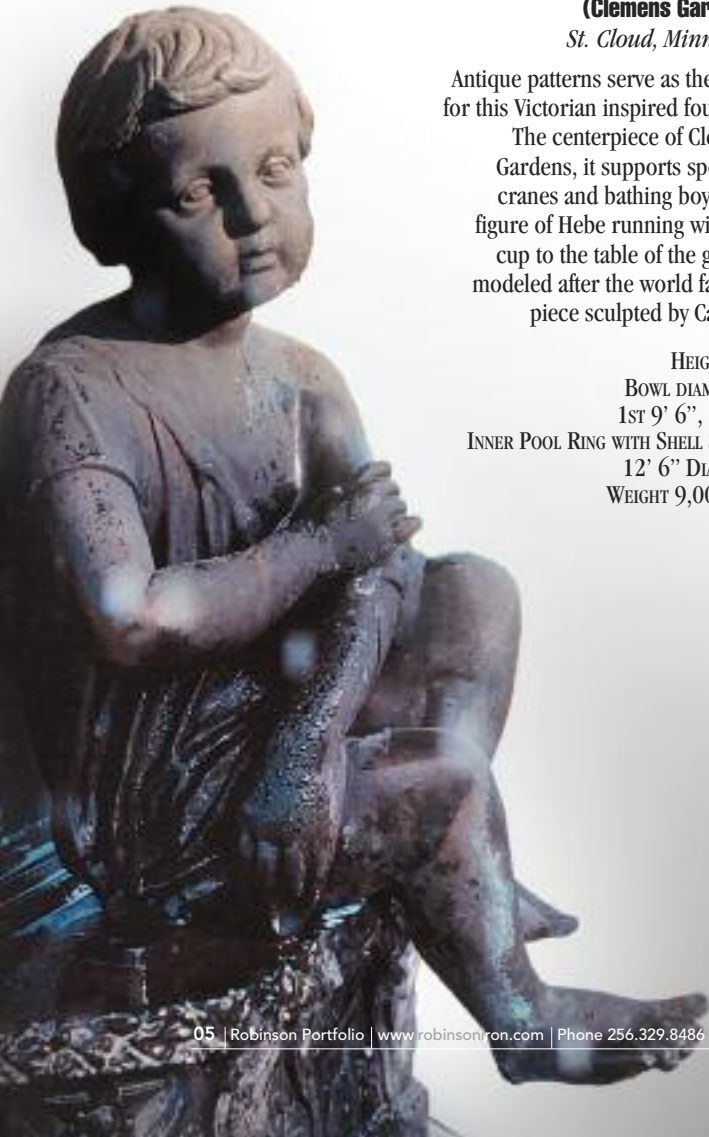
HEIGHT 20'  
BOWL DIAMETERS:  
1ST 9' 6", 2ND 5'  
INNER POOL RING WITH SHELL SPOUTS  
12' 6" DIAMETER  
WEIGHT 9,000 LBS.



**Westhaven**  
*Franklin, Tennessee*

The focal point of a New Urbanist landscape located on 1,500 acres near Franklin, Tennessee.

HEIGHT 19' 6"  
1ST OCTAGONAL TIER 12' FLAT TO FLAT  
DIAMETER 2ND 5'  
WEIGHT 10,000 LBS.



**Memphis**  
*Memphis, Tennessee*

Boys blow water through conch shell horns in a variation of our most popular design.

HEIGHT 20'  
BOWL DIAMETERS:  
1ST 9' 6", 2ND 5'  
WEIGHT 8,500 LBS.



**Old Hyde Park Fountain**  
Tampa, Florida

The Old Hyde Park Fountain is dressed with scrolls, plumes, florals and acanthus leaves.

HEIGHT 9' 6"  
BOWL DIAMETERS:  
1ST 9' 6", 2ND 5', 3RD 1' 6"  
WEIGHT 4,900 LBS.



**Jackson**

Amelia Island, Florida

Encompassing the elegance and luxury that is synonymous with Ritz Carlton, the Jackson is rich in exquisite detail and brings a sophisticated stance to the entrance.

HEIGHT 11' 6"  
BOWL DIAMETERS:  
1ST 9' 6", 2ND 5', 3RD 2' 10"  
WEIGHT 4,900 LBS.



**Tucker Hill**  
McKinney, Texas

This cast iron beauty has the largest circular fountain bowl made by Robinson.

HEIGHT 24'  
BOWL DIAMETERS:  
1ST 12', 2ND 6' 6"  
WEIGHT 14,500 LBS.



**Boy on Dolphin**  
Remote figure

2' 6" HEIGHT  
1' 3" WIDTH  
WEIGHT 120 LBS.



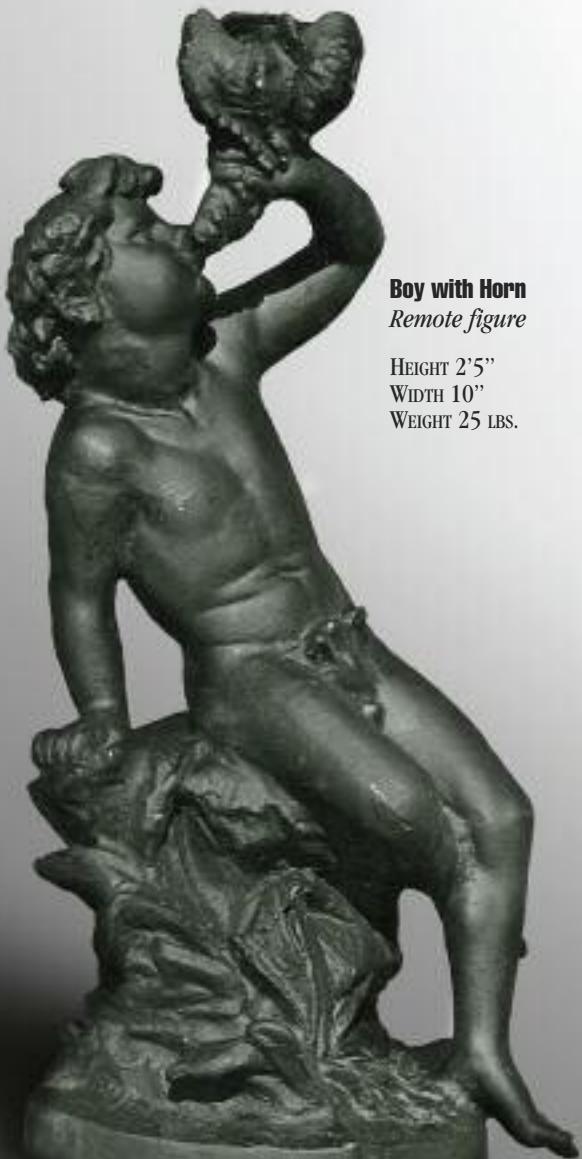
**Henderson**

Henderson, Kentucky

This handsome fountain is the town centerpiece for Henderson, Kentucky.

HEIGHT 25' 6"  
BOWL DIAMETERS:  
1ST 7' 6", 2ND 4' 6"  
WEIGHT 12,750 LBS.





**Boy with Horn**  
*Remote figure*

HEIGHT 2' 5"  
WIDTH 10"  
WEIGHT 25 LBS.

**Children's Fountain**  
*Chicago, Illinois*

A scalloped granite pool accentuates the cast inner pool ring and linear qualities of this three tier fountain.

HEIGHT 20'  
DIAMETER INNER POOL 12' 6"  
BOWL DIAMETERS:  
1ST 6', 2ND 4', 3RD 2' 8"  
WEIGHT 7,500 LBS.



**Opryland**  
*Nashville, Tennessee*

Taken from Robinson's antique pattern collection, this unique and monumental cast-iron fountain stands within "The Delta," at Nashville's opulent Opryland Hotel.

HEIGHT 16' 1"  
BOWL DIAMETERS:  
1ST 9' 6", 2ND 6', 3RD 3'  
WEIGHT 7,800 LBS.



**Cadman Plaza**  
*Brooklyn, New York*

After an analysis of historic site photos, Robinson faithfully recreated this fountain feature, as well as the circular Gothic fencing and additional railing around Brooklyn Borough Hall.

HEIGHT 17' 6"  
BOWL DIAMETERS:  
1ST 9' 6", 2ND 5', 3RD 2' 8"  
WEIGHT 8,000 LBS.



**South Fountain**  
*Salt Lake City, Utah*

Twin fountains, once again, grace the prestigious City and County Building. The South Fountain was removed, rebuilt and restored, and the North Fountain was recreated by skilled Robinson craftsmen from historic documentation.

HEIGHT 16'  
BOWL DIAMETERS:  
1ST 9' 6", 2ND 5'  
WEIGHT 7,900 LBS.

**Standard Finishes**  
*Custom available*



Gloss White



Gloss Black



Verde Gris



Charleston Green



Pompeian Green

**Caesar**

A trio of tiers edged in egg and dart detailing make the Caesar a classic.

HEIGHT 8' 3"  
BOWL DIAMETERS:  
1ST 6' 5", 2ND 3'  
3RD 2'  
WEIGHT 2,200 LBS.



**Fontainebleau**  
*Jasper, Alabama*

HEIGHT 9'  
BOWL DIAMETERS:  
1ST 5', 2ND 2' 6"  
WEIGHT 2,100 LBS.



**Thorntown**  
*Thorntown, Indiana*

HEIGHT 10' 6"  
BOWL DIAMETERS: 1ST 4' 6" AT LIP OF BOWL  
DIAMETER OF POOL 12' 6"  
WEIGHT OF FOUNTAIN 2,750 LBS.  
WEIGHT OF 12' 6" BASIN 4,000 LBS.

Intermediate  
*Fountains*

**Windsor Court**

*Charleston, South Carolina*

Finely crafted bronze swans maintain a delicate presence while supporting the two tiers of this stylish fountain.

HEIGHT 5'  
BOWL DIAMETERS:  
1ST 5' 2", 2ND 2' 10"  
WEIGHT 2,100 LBS.



**Marietta**  
*Marietta, Georgia*

HEIGHT 13'  
BOWL DIAMETERS:  
1ST 7', 2ND 4', 3RD 2' 4"  
WEIGHT 3,500 LBS.



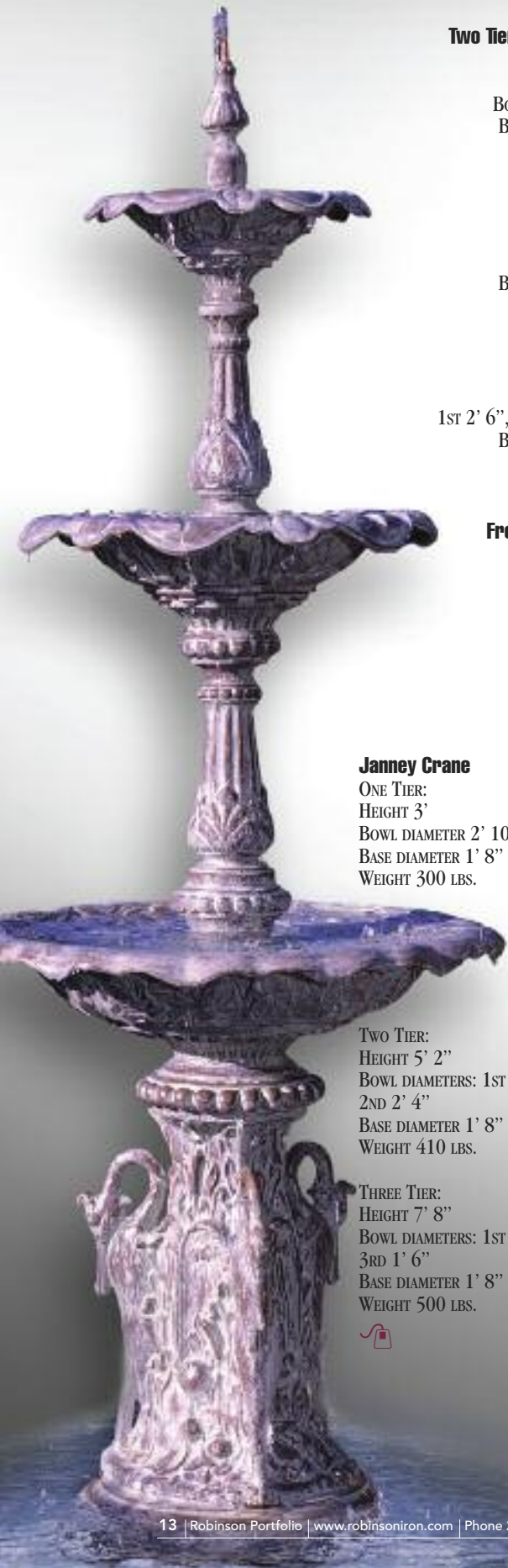
**Botanical Gardens Fountain**

Free in form and simple in composition, this captivating fountain establishes a powerful presence with its elliptical shape.

HEIGHT (WITHOUT STONE BASE) 1' 9"  
BASE 1' 8" SQUARE  
BOWL DIAMETERS: 2', 4', 5', 7'  
WEIGHT (5') 1,000 LBS.

-Can be used with a variety of pedestals  
-Stone base not available for purchase





**Two Tier Mediterranean**

ONE TIER:  
HEIGHT 2' 9"  
BOWL DIAMETER 2' 6"  
BASE DIAMETER 1' 8"  
WEIGHT 210 LBS.

TWO TIER:  
HEIGHT 4' 10"  
BOWL DIAMETERS:  
1ST 2' 6", 2ND 2'  
BASE DIAMETER 1' 8"  
WEIGHT 290 LBS.

THREE TIER:  
HEIGHT 6' 10"  
BOWL DIAMETERS:  
1ST 2' 6", 2ND 2', 3RD 1' 2"  
BASE DIAMETER 1' 8"  
WEIGHT 800 LBS.

**Frog & Turtle Basin**

DIAMETER 6'  
WEIGHT 800 LBS.

**Janney Crane**

ONE TIER:  
HEIGHT 3'  
BOWL DIAMETER 2' 10"  
BASE DIAMETER 1' 8"  
WEIGHT 300 LBS.

TWO TIER:  
HEIGHT 5' 2"  
BOWL DIAMETERS: 1ST 2' 10",  
2ND 2' 4"  
BASE DIAMETER 1' 8"  
WEIGHT 410 LBS.

THREE TIER:  
HEIGHT 7' 8"  
BOWL DIAMETERS: 1ST 2' 10", 2ND 2' 4",  
3RD 1' 6"  
BASE DIAMETER 1' 8"  
WEIGHT 500 LBS.



**Roman Minimus on Base**

HEIGHT 5' 9"  
BOWL DIAMETERS:  
1ST 24", 2ND 14"  
WEIGHT 140 LBS.

BASE:  
1' 3-1/2" SQUARE  
HEIGHT 2' 3"  
WEIGHT 155 LBS.

**Octagonal Basin**

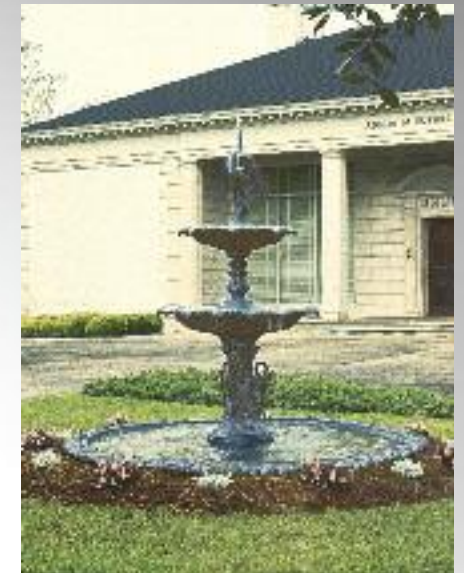
DIAMETER 5' 6"  
(FLAT TO FLAT)  
WEIGHT 544 LBS.



Small scale  
*Fountains*

**Tall Crane Fountain**

HEIGHT 8'  
BOWL DIAMETERS:  
1ST 4', 2ND 2' 4", 3RD 1' 6"  
WEIGHT 880 LBS.



**Bittern Fountain**

HEIGHT 8' 1"  
BITTERN ALONE  
HEIGHT 2' 6"  
BOWL DIAMETERS  
1ST 4', 2ND 2' 10"  
WEIGHT 780 LBS.  
FROG & TURTLE BASIN DIAMETER 8'  
WEIGHT 1,000 LBS.



**Roman Fluted**

**Magnus** (THREE TIER)  
HEIGHT 5' 5"  
BOWL DIAMETERS: 1ST 2' 6",  
2ND 2', 3RD 1' 2"  
BASE DIAMETER 1' 3-1/2" SQUARE  
WEIGHT 323 LBS.

**Medius** (TWO TIER)  
HEIGHT 3' 11"  
BOWL DIAMETERS: 1ST 2' 6", 2ND 2'  
BASE DIAMETER 1' 3-1/2" SQUARE  
WEIGHT 287 LBS.

**Minimus**  
HEIGHT 3' 6"  
BOWL DIAMETERS: 1ST 2', 2ND 1' 2"  
BASE DIAMETER 9-1/2" SQUARE

SHOWN WITH  
**Egg & Dart Basin**  
DIAMETER 5' 6"  
WEIGHT 491 LBS.



**Montgomery Crane**  
*Remote figure*

HEIGHT 3' 7"  
WING SPAN 3' 9"  
BASE:  
LENGTH 1' 9"  
WIDTH 1'-1/2"  
WEIGHT 100 LBS.



## Font Heads



### Dolphin Masque

HEIGHT 14"  
WIDTH 5"  
WEIGHT 12 LBS.



### Pan Face Masque

HEIGHT 11"  
WIDTH 8-1/2"  
FACIAL EXTENSION 2-1/2"  
WEIGHT 8 LBS.



### Ram's Head Masque

HEIGHT 16"  
WIDTH 11"  
EXTENSION 5"  
WEIGHT 32 LBS.



### No. 5 Lion Head with Wall Bowl

DIAMETER 1' 8"  
FACIAL EXTENSION 8"  
WEIGHT 37 LBS.

### Wall Fountain Bowl

	#1	#2	#3	#4
WIDTH	11"	17"	22-1/2"	34"
HEIGHT	3-1/2"	4-1/2"	8"	9-1/2"
DEPTH	6"	10"	13"	18"



### Roman Pedestal Fountain

HEIGHT 3' 5"  
BASE DIAMETER 1' 3"  
BOWL DIAMETER 24-1/2"  
WEIGHT 150 LBS.



### Grecian Birdbath

HEIGHT 2' 11"  
BASE DIAMETER 1' 3"  
BOWL DIAMETER 24-1/2"  
WEIGHT 150 LBS.

### Atrium Fountain

HEIGHT 5' 1"  
WEIGHT OF FIGURE 80 LBS.  
BASE DIAMETER 5' 3"  
EGG & DART BASIN 670 LBS.



## Fountain Installation Instructions

Please note: Plumbing and electrical requirements may vary with each design. Please read the following carefully, and should you have questions, please contact a Robinson Iron representative to determine what options are best suited to your requirements.

## Pool Recommendations

The following recommendations will prevent excessive water loss due to splash.

- 1. Pool Diameter** The pool diameter should be roughly equal to the height of the fountain or larger.
- 2. Pool Depth** A pool depth of at least 7" is generally best for fountains of this nature; a depth of 18" to 24" may be required for interior applications.
- 3. Water Supply** Water supply may be either fresh water or recirculating. A float valve will keep a fresh water supply pool at a constant level. Recirculating pools need periodic water refills to maintain their operational levels. Care should be taken not to operate a recirculating fountain pump without adequate water level in the pool.

## Types of Pools

**1. Masonry** Masonry pools may be constructed in any configuration as long as they conform to the recommended diameter and depth. They are generally utilized with a fresh water supply/float valve arrangement, especially in public installations. Sophisticated plumbing and electrical packages containing timers, lighting, water filtration, etc. are available for installation in a masonry pool. Robinson consultants can provide a design proposal and estimate upon request.

**2. Cast Iron Pools by Robinson** Robinson Iron manufactures shallow metal pools called ground basins for quick installation of smaller fountains. They are available in several sizes. All have a 1-1/2" diameter conduit welded into the center through which the recirculating pump's electrical cord can pass. This conduit also acts as an overflow pipe during downpours. Each ground basin is fitted with a removable 1/2" diameter stainless steel drain plug for ease of maintenance. Decorated with either an egg and dart or frog and turtle motif, they are extremely heavy and must be handled with a great deal of caution.

## Lighting

Submersible lighting is perhaps the most flattering to the fountain's overall effect. Small freestanding halogen lights are available for shallow pools and for use in the upper tiers of the fountain. Niche lighting should be permanently installed in the masonry pool floor.

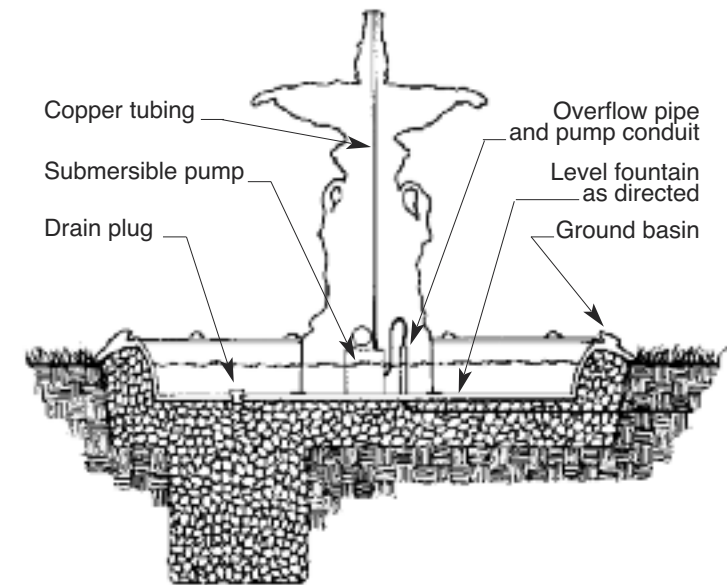


### Fountec & Protec

Keep your fountain clean and clear of algae with these environmentally-safe cleaning products.

Custom plumbing and electrical packages can be designed by our fountain specialists.

## CAST IRON POOL INSTALLATION



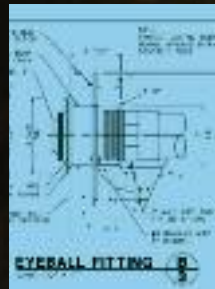
### Cast Iron Pools (Ground Basins)

EGG & DART DIAMETERS:  
4', 5'3", 6'5", 7'10", 9'

FROG & TURTLE DIAMETERS:  
4', 5', 6', 8'

All fountain restorations follow a set of careful steps to help return each piece to its original appearance. Historic photographs of the fountain are matched to catalog engravings of the period. Existing site conditions are noted followed by the tagging and removal of each existing component. Removed pieces are carefully packed and transported to our facility where they are photographed and cataloged again before being disassembled, cleaned and inspected. After careful inspection certain pieces are designated for replication. In-house artisans sculpt any missing elements for casting. The newly cast and restored pieces are then fully reassembled and coated with a three-part system.

Robinson installation teams may deliver and assist in the placement of the fountain. Specialty plumbing and electrical packages are available.



**Forsythe Park Fountain**  
Savannah, Georgia

Careful cleaning, recasting and on-site reassembly returned this historic landmark to its original 1870's grandeur.

# Architecture

## Restorations

Replications

Custom  
Castings

**The 575 7th Street Main Tower at Terrell Place**  
*Washington, DC*

**Facades with nothing to hide.**



**Navy Pier**  
*Chicago, Illinois*



**Basilica of the National Shrine of the Assumption of the Blessed Virgin Mary**  
*Baltimore, Maryland*

Robinson's design and fabrication teams work closely with architects, developers and contractors to ensure quality installation. Whether the project requires historic restoration or new construction Robinson Iron is a major resource for architectural metals.



**Knox House**  
 Montgomery, Alabama  
 Recreation with pre-existing Robinson patterns.



**Alabama State Capitol**  
 Montgomery, Alabama  
 Monumental Greek Revival column capitals are faithful reproductions of the originals cast in the 1850s. Six feet in height with an abacus seven feet square, each capital weighs approximately one ton.



**Carroll Square**  
 New York, New York  
 Robinson Iron designed and fabricated an entirely new cast aluminum facade as part of this trophy-class project located in the East End. The complex is at the heart of the resurgence in the area creating new and unique office and retail opportunities. Local historic patterns were used to suggest the appearance of an older cast iron facade. Below is the completed project.



**C0808 & B0858**

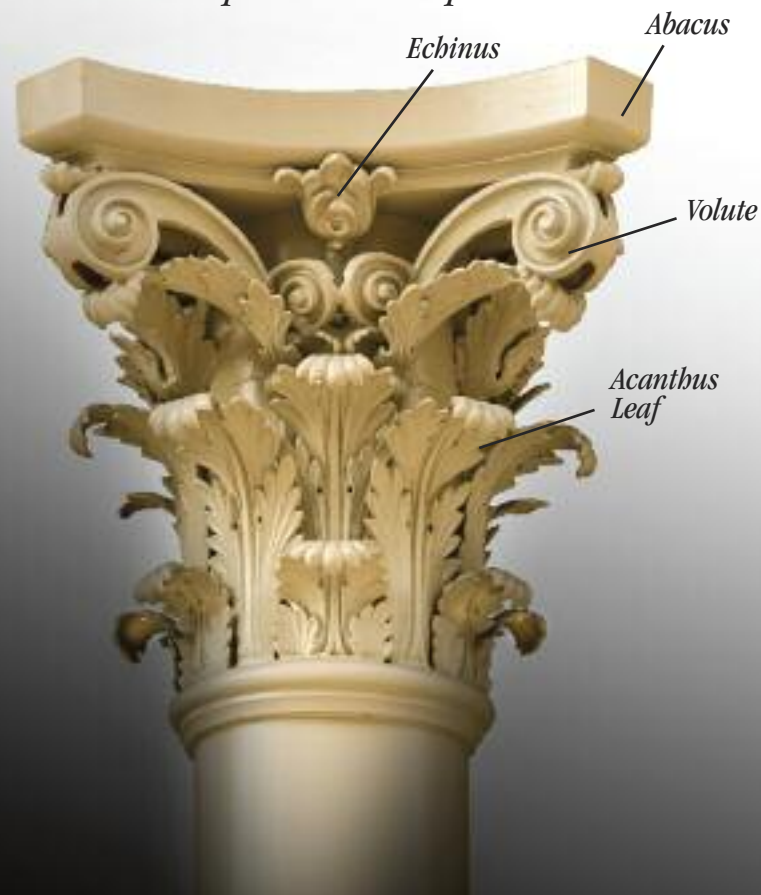


**Aerial Brackets**  
 SHOWN WITH C0606  
 HEIGHT 2' 8"  
 WIDTH 2' 7-3/8"  
 RADIUS 2' 7-3/8"  
 WEIGHT 30 LBS.



Components/drawings on website  
 Featured in our online newsletters

*Composite Capital*



**Column Components**

Number	Height	I.D.	Std. Pipe Clearance	
C0303	37-1/2"	3-1/2"	3"	one piece casting
B1193	3' 2-1/2"	3-1/2"	3"	one piece casting
C0505	7-1/2"	5-1/2"	5"	one piece casting
C0404	8"	4-3/4"	4"	one piece casting or two halves
B0454	1"	4-1/2"	4"	two halves
C0606	8"	6-3/4"	6"	one piece casting or two halves
B0656	1'	6-3/4"	6"	two halves
C0808	7-7/16"	8-5/8"	8"	two halves
B0858	1'	8-5/8"	8"	two halves
	2'	6-3/4"	6"	two halves
C1010	8-1/2"	10-3/4"	10"	two halves
B1050	1'	10-3/4"	10"	two halves
French Market Cap	10-3/4"	4-5/8"	4"	two halves
French Market Base	3'	4-5/8"	4"	two halves

Note: Base numbers begin with "B" and capital numbers begin with "C". Halves may be bolted or welded to pipe columns. One piece castings may be welded or set screwed to pipe columns before erection.

**C0303 C0505**

**French Market Cap**



**French Market Base**

**#119 Base**  
 COMPANION TO THE C0303 CAPITAL



**Baruch College**  
*New York, New York*  
 Site A building renovation  
 25th and 26th Street storefronts  
 Baruch College – CUNY



**The Jefferson at Penn Quarter**  
*Washington, DC*

Turning around urban decay is not an easy thing especially when it involves the heart of the nation's capital, thirteen historic properties and the desire to create significant urban amenities. This has all been accomplished with the restoration of The Jefferson at Penn Quarter.



**Meeting Street Restoration**  
*Charleston, South Carolina*

This historic Charleston commercial district was authentically recreated, using documented cornice, fascia, pilaster and column patterns.



**Beard Building**  
*Birmingham, Alabama*

Restoration of cast iron facade



**Vajen Building**  
*Indianapolis, Indiana*

Fifteen years after preservationists purchased it, Robinson Iron restored this Italianate cast iron facade within a reconstructed streetscape. The facade "floats" in front of a new steel armature. Additional decorative details were replicated from old photos.

**Dorchester Courthouse**  
*Dorchester, Massachusetts*

These Post-Modern column capitals were made of custom-cast aluminum affixed to cast stone.

**McDonald Research Laboratories**  
*University of California at Los Angeles*

Custom-cast aluminum capitals surmount heavy aluminum columns reminiscent of the Egyptian Revival. Original patternwork was carved in wood using a complex core system to allow maximum detail. Polychrome accents the effect.

**Coley Building**  
*Mobile, Alabama*

A historic facade was saved by retrofitting it to a new parking structure.





**Four Arches Gazebo**

Arched arbors await creeping jasmine or wisteria, providing a palette for beautiful blooms and sought-after shade. Shown in aluminum.

HEIGHT TO TOP OF ARCH 11'  
INSIDE RADIUS OF ARCHES 3' 5"

**Woodruff Park Pavilion**

*Atlanta, Georgia*  
Created for the 1996 Summer Olympic Games, this custom design consists of an openwork strut cornice assembly supporting an impact-resistant, ceramic fritted glass dome.



**Raffles Hotel**

*Singapore*  
Historical documentation provided the basis for the replication of these evocative cast iron structures. Every aspect of the project—renderings, patternwork, engineering and on-site erection—was accomplished by Robinson specialty teams.



**Birmingham Botanical Gardens Pavilion**

*Birmingham, Alabama*  
To better withstand the natural elements, Robinson Iron replicated the original wooden pavilion in fabricated aluminum and glass.



**Las Vegas Hilton Gazebo**

*Las Vegas, Nevada*  
Robinson Iron engineered and built this structure using a combination of new and existing patterns, designing it with wind load as an important factor. The gazebo's bright blue finish provides an oasis of color to offset desert surroundings.



**Linn Park Pavilion**

*Birmingham, Alabama*  
This custom structure is the focal point of a park in the city's cultural district. Its proximity to the museum and major theaters allows it to serve as an informal concert stage.



**Robinson Pavilion**

HEIGHT 14'  
OCTAGONAL- FLAT TO FLAT 20' 10"



**Radney Dome**

Wrought dome with cast column components

HEIGHT 16'  
DIAMETER 10'



# Pavilions

# Gates & Fences

## Entrance Gate and Fencing Atlanta, Georgia

A small antique gate and limestone piers formed the basis of this large residential entrance. Exact replication of the components ensured a smooth transition from new to original material.



## University of Notre Dame South Bend, Indiana

Swirling wrought scrollwork comprises this modern replica railing fabricated to match existing rails in the Main Administration building at the University of Notre Dame.



## Grand Stairs

Spreads of palm fronds and elephants marching in a tail-in-trunk parade come together to create an exciting centerpiece of grand scale. Making use of an innovative technology, waterjet, this staircase was cut out of solid steel plate. Bronze tubing forms the hand rails, finishing in large spiral flourishes.



## Stuyvesant Square Park New York, New York

Extensive recasting to exact dimensions was required in this challenging and important restoration of the perimeter gates and fencing.



## Broxton

Los Angeles, California

Unimagined shapes can be cast and fabricated into code compliant railings.



## Dean Gardens

Alpharetta, Georgia

Ornately cast and custom designed by Robinson Iron to the client's specifications, the gilded staircase railing was adapted to a free-form spiral entrance stair and rear circular stair.



## Hecht Viewing Gardens New York, New York

GARDEN FEATURES AND  
CUSTOM EXTERIOR RAILING

Robinson Iron supplied custom cast iron appointments for these two triangular companion parks in Lower Manhattan. An urn graces the center of one park, while a compass rose is the centerpiece of the other.

## The Russian Gates Wilmington, Delaware

Surmounted by a crest containing the Russian Imperial Crown these ornate wrought iron gates honor Catherine II (the Great). Robinson replicated missing scrolls and leaves to restore this eighteenth century masterpiece.



# Transit

## Prospect Park Plaza Portal

*New York, New York*

An estimated 20 tons of cast iron and structural steel create this inviting subway entrance. The architect has established a well-appointed open-air "room" where playful animal silhouettes remind passersby that Prospect Park Zoo is only a short walk away.



## Astor Place Kiosk

*New York, New York*

Complete recreation of original subway entrance.



## Subway Railings

*New York, New York*

Typical of subway entrances once found in all five New York boroughs, this cast-iron railing is a replica of an original design from the 1920s. The Manhattan entrance also features twin lampposts whose colored globes indicate the direction of service.



## Navy Pier

*Chicago, Illinois*

Waterjet cut detailing gives this Trolley Shelter identity and a sense of place.

## State Street

*Chicago, Illinois*

Subway Kiosks / Planter Railing

In a massive project, the firm produced 29 gateway kiosks and 7,000 linear feet of planter railing—all original designs by the project architect. Over 368 tons of cast iron was poured, machined, pre-assembled and conveyed from Alabama to the City of Chicago.



# Key Specifications

## for Architectural Metal Castings

### Shop Drawings:

Scale to be a minimum of one inch equals one foot. Show all fasteners and weldments. Indicate all finishes. Indicate order quantities.

### Patterns:

Must account for shrinkage at a rate of one eighth of an inch per linear foot. All edges and details must be clearly defined. Use of remnants as patterns.

### Castings/Material:

**Sand Cast Grey Iron**  
Class 30 ASTM A48

**Sand Cast Aluminum**  
Alloy 319 ASTM B221

**Sand Cast Bronze**  
#12A Silicon Bronze  
ASTM B198

All castings should be free of typical foundry defects such as porosity, cold shuts and warpage.

### Surface:

Molding sand must have a minimum AFS 70 grain fineness on a 3-screen distribution. All gating and flashing must be thoroughly cleaned. All castings must be cleaned to bare white metal prior to the application of any finish coatings.

### Coatings:

**Iron/Steel**  
Pre-prime – Zinc Chromate  
(shop applied)

Primer – Two component  
Epoxy Primer  
Finish – Acrylic  
Polyurethane

**Aluminum**  
Primer – Two component  
Epoxy Primer  
Finish – Acrylic  
Polyurethane

**Bronze**  
#4 Satin Finish-Brushed  
Chemical Patina-  
Highlighted  
Increlac Lacquer/Paste  
Wax

### Construction:

All weldments must be in strict accordance with AWS practices and procedures.

**Cast Iron** – 41MP  
Pure Nickel Rod

**Aluminum** – Alloy  
R4043 Aluminum Rod

**Bronze** – Alloy 3S1B  
Silicon Bronze Rod

### All fasteners are to be:

Stainless Steel with Iron/Steel/Aluminum #12A Silicon Bronze with Copper-based alloys.

### Sealants:

One-part color matched Silicone or Urethane sealant.

### Labor:

Only qualified craftsmen with proper certification are recommended. A minimum of five years experience is suggested.



**United States Post Office**  
Oklahoma City, Oklahoma

Over six tons of cast bronze were used in a combination of cast and fabricated material.



**Prudential Building**  
Buffalo, New York

Restoration of the Louis Sullivan Skyscraper required bronze plating over cast iron for the stairs and elevator grille medallions.



**The 575 7th Street Main Tower at Terrell Place**  
Washington, DC

The architecture of the Hecht building is impressive incorporating heavy cast iron gothic ornamentation in the ground floor spandrel panels and entrance canopy. All had to be removed for restoration. After cleaning, repair and refinishing, it was reinstalled on the renovated structure.



**Grand Central Station / Vanderbilt Canopy**  
New York, New York

Replicating the Industrial-Age style of the original ironwork, the company extended the historic landmark's corner entry at Vanderbilt Avenue and 42nd Street.

# Amenities

**Illuminate your imagination.**



**Serenbe**  
*Palmetto, Georgia*

Robinson Iron cast designer Robert Rausch's whimsical swirl in ductile iron to be used as street lights. Their beautiful arching shapes support fluted shades at the ends while strings of small lights festoon across the "arms".



*P*ublic spaces require durable solutions to a variety of problems. Robinson lampposts, benches, bollards and planters are proven products that can be finished in any specified architectural coating.



**Navy Pier**  
 HEIGHT 3' 4"  
 BASE DIA. 1' 1-3/4"  
 WEIGHT 100 LBS.



**Fluted Bollard**  
 HEIGHT 3' 4"  
 BASE DIA. 1' 1-3/4"  
 WEIGHT 100 LBS.



**Multi-Modal Bollard**  
 HEIGHT 3' 6"  
 BASE DIA. 12"  
 WEIGHT 110 LBS.



**Pineapple Post**  
 HEIGHT 4'  
 BASE DIA. 6-3/4"  
 WEIGHT 60 LBS.



**Ornate Stanchion**  
 HEIGHT 2' 10-1/4"  
 OCTAGONAL BASE 5-1/2"  
 INSIDE DIA. 1-1/2"  
 OUTSIDE DIA. 2-1/2"  
 WEIGHT 56 LBS.



**Post #41**  
 HEIGHT 3' 4"  
 BASE DIA. 1' 1-3/4"  
 WEIGHT 100 LBS.

Bollards are used to restrict or define access to an area. These short posts may be adapted to be removable, break-away or reinforced for security reasons.



**The Wynlakes**  
 HEIGHT 10'  
 OCTAGONAL BASE 1' 3"  
 WEIGHT 295 LBS.



**Sturbridge Post**  
 HEIGHT 9'  
 BASE DIA. 1' 9"  
 WEIGHT 230 LBS.



**The Grand Rapids**  
 HEIGHT 8'  
 DIA. (TOP) 3"  
 BASE PLATE 1'-1/4" SQ.  
 WEIGHT 175 LBS.



**Iolani**  
 HEIGHT 8' 3"  
 OCTAGONAL BASE 8"  
 FLAT TO FLAT  
 CROSSARM WIDTH 2' 3"  
 WEIGHT 200 LBS.



**The Robinson One Nineteen**  
 HEIGHT 8' 5"  
 CROSSARM WIDTH 1' 8" (OPTIONAL)  
 BASE DIA. 9"  
 WEIGHT 180 LBS.



**The Rosemont**  
 HEIGHT 9'  
 BASE DIA. 1' 3"  
 WEIGHT 300 LBS.

Our cast iron lamp standards accept a variety of fixtures and may be modified in several number of ways. Available light sources are: incandescent with medium, mogul or candelabra base; high pressure sodium; metal halide; and gas with mantle or open flame. All finishes shown are available (page 10), and with a specified color number or color chip provided, we can finish any piece in the color of choice.



**Cherry Street Bollard**  
 HEIGHT 3' 4"  
 BASE 7" SQUARE  
 WITH COVER, BASE 8" SQUARE  
 WEIGHT 105 LBS.  
 (POST ONLY) COVER 15 LBS.

**Linn Park**  
 HEIGHT 3' 4"  
 BASE DIA. 1' 1-3/4"  
 WEIGHT 100 LBS.



**Courtyard**  
 HEIGHT 3' 4"  
 BASE DIA. 1' 1-3/4"  
 WEIGHT 100 LBS.



**Venetian Finial**  
 HEIGHT 2' 6"  
 BASE 9-1/2" SQUARE  
 WEIGHT 100 LBS.



(ADDITIONAL SIZES AVAILABLE)

**Ball Finial**  
 HEIGHT 1' 6"  
 BASE 11" SQUARE  
 WEIGHT 25 LBS.



Components/drawings on website  
 Featured in our online newsletters



**Clemens Garden**

*St. Cloud, Minnesota*

Structured in the magnificent tradition of Europe's great formal gardens, Robinson's wrought-iron arbor extends 150 feet with a 20-foot diameter central dome. Cast urns, fountains and furniture from the Robinson collection appoint these beautifully kept gardens.



**Fall River Standard**

*Fall River, Massachusetts*

Towering, 18-foot custom lighting standards—complete with special options and bearing the city's name—combine durability, performance and charm.



(LIGHT POST)  
18' HEIGHT  
2' SQUARE BASE



**Redwood Lampposts**

*Redwood City, California*

The very latest in high tech performance art, these functional lampposts illuminate the streetscape with an ever changing light show. Made of custom cast aluminum and fitted with sophisticated fiber optics, the entire series of posts can be programmed to create a sequentially running or pulsing light effect in constantly changing colors.



**RSA Headquarters**

*Montgomery, Alabama*

Custom fabricated "lanterns" allow light into the parking deck below.



**Bow Bridge in Central Park**

*New York, New York*

Stately urns were replicated for the restoration of Bow Bridge in Central Park, New York.



**Elliptical Planters**

**No. 1**

HEIGHT 11"  
DIAMETER 5'  
WEIGHT 700 LBS.



**No. 2**

HEIGHT 1' 2"  
DIAMETER 7'  
WEIGHT 1,250 LBS.



**Half Pots**

HEIGHT OF EACH 1'  
DIAMETERS 3' 4", 4' 1", 5'  
WEIGHT 400 LBS., 480 LBS., 675 LBS.



**4' Botanical Urn**

HEIGHT OF EACH 2' 5"  
DIAMETERS 3' 4", 4' 1", 5'  
WEIGHT 400 LBS., 480 LBS., 675 LBS.



**Immovable Pots**

HEIGHT OF EACH 2' 1"  
DIAMETERS 3' 4"  
OPENING 1' 8"  
WEIGHT 800 LBS.

DIAMETERS 4' 1"  
OPENING 2' 4"  
WEIGHT 960 LBS.

DIAMETERS 5'  
OPENING 3'  
WEIGHT 1,350 LBS.



**Lattice Planter**

HEIGHT 3' 4"  
WIDTH 2' 10" SQUARE  
WEIGHT 950 LBS.  
(INCLUDES LINER)



**ArraBelle Fire Bowl**

3' 9" OCTAGONAL FIRE BOWL  
HEIGHT 11" TO LIP  
GUARD HEIGHT 5"  
WIDTH 3' 9" FLAT TO FLAT  
WEIGHT 225 LBS.

5' 3" OCTAGONAL FIRE BOWL  
HEIGHT 1' 4" TO LIP  
GUARD HEIGHT 7"  
WIDTH 5' 3" FLAT TO FLAT  
WEIGHT 300 LBS.

4' RECTANGULAR FIRE BOWL  
HEIGHT 11-5/8" TO LIP  
GUARD HEIGHT 6"  
WIDTH 2' 2"; LENGTH 4'  
WEIGHT 150 LBS.

(SHOWN WITH OPTIONAL  
GAS INSERT OPENING)



**Minnow Grate**

1' 8" SQUARE  
WEIGHT 19.6 LBS.



**Linn Park Grate**

WIDTH 7-1/2"  
LENGTH 22-5/8"  
1/2" THICK WITH 1" THICK BORDERS



**Trash Receptacle I**

HEIGHT 3' 2"  
DIAMETER 2' 2"  
WEIGHT 200 LBS.  
COMES WITH A 16 GAUGE, 16" DIAMETER  
GALVANIZED LINER.



**Vulcan Trash Receptacle**

HEIGHT 3' 2-1/2"  
DIAMETER 2' 3"  
WEIGHT 210 LBS.  
COMES WITH A 16 GAUGE, 16" DIAMETER  
GALVANIZED LINER.



**Scroll Bench**

HEIGHT 2' 8"  
HEIGHT TO SEAT 1' 5"  
LENGTH 4', 6', 8'  
WIDTH 1' 9"  
WEIGHT 126 LBS. (4')  
WEIGHT 135 LBS. (6')  
WEIGHT 156 LBS. (8')  
(AVAILABLE ASSEMBLED  
OR UNASSEMBLED)



**Expo Bench**

HEIGHT 2' 10"  
LENGTH 4', 6', 8'  
WIDTH 2' 2"  
WEIGHT 120 LBS. (4')  
WEIGHT 135 LBS. (6')  
WEIGHT 156 LBS. (8')  
(AVAILABLE ASSEMBLED OR UNASSEMBLED)



**Grecian Bench**

HEIGHT 17-1/2"  
LENGTH 4' AND 5' AVAILABLE  
WIDTH 15"  
WEIGHT 65 LBS. (4')  
WEIGHT 85 LBS. (5')

**Robinson  
Drinking Fountain**

HEIGHT 35"  
BASE DIAMETER 15"  
WEIGHT 135 LBS.



# Garden

Useful and ornamental pieces for the garden or home create a lasting legacy. Many pieces can be customized and finished in a variety of colors. Provisions for anchoring exterior pieces may be made when desired.

# HOME

## Schooling Fish Table

GLASS:  
LENGTH 96"  
WIDTH 36"  
WEIGHT 260 LBS.

BASE:  
HEIGHT 29"  
LENGTH 80"  
WIDTH 28"  
WEIGHT 200 LBS.



Components/drawings on website  
 Featured in our online newsletters  
*Glass top (sold separately)*

**Swan Table**

GLASS TOP  
 SHOWN WITH 3/4" THICK GLASS  
 DIAMETER 5'  
 WEIGHT 190 LBS.

BASE  
 HEIGHT 29"  
 DIAMETER 20"  
 WEIGHT 150 LBS.



**Dolphin Coffee Table**

GLASS TOP  
 DIAMETER 38"  
 WEIGHT 76 LBS.

BASE  
 HEIGHT 19"  
 DIAMETER AT WIDEST POINT 31"  
 WEIGHT 80 LBS.



**Inverted K&A Console**

GLASS TOP  
 LENGTH 55"  
 DEPTH 23"  
 WEIGHT 85 LBS.

BASE  
 HEIGHT 34"  
 LENGTH 50-1/2"  
 WIDTH 18-3/4"  
 WEIGHT 150 LBS.



**Console**

BASE  
 HEIGHT 30-1/2"  
 LENGTH 51"  
 DEPTH 15"  
 WEIGHT 100 LBS.



**Grape Chair & Tasting Table**

TABLE  
 DIAMETER 1' 11"  
 HEIGHT 2' 3"  
 WEIGHT 30 LBS.

GRAPE CHAIR  
 HEIGHT 33-3/4"  
 HEIGHT TO SEAT 16-3/4"  
 SEAT DEPTH 15-1/4"  
 SEAT WIDTH 17-3/4"  
 WEIGHT 15 LBS.



**Lion Table**

GLASS TOP  
 LENGTH 60"  
 DEPTH 36"  
 WEIGHT 150 LBS.

BASE  
 HEIGHT 30"  
 LENGTH 64"  
 DEPTH 39"  
 WEIGHT 100 LBS.



**Janney Table**

HEIGHT 2' 6"  
 DIAMETER 2' 10"  
 UMBRELLA HOLE DIAMETER 1-1/2"  
 WEIGHT 210 LBS.





**French Renaissance Settee**

HEIGHT 3'  
 HEIGHT TO SEAT 1' 2"  
 LENGTH 3' 10"  
 SEAT WIDTH 3'  
 WEIGHT 140 LBS.



**Fern Chair, Table & Settee**

CHAIR	TABLE	SETTEE
HEIGHT 2' 8"	HEIGHT 2' 6"	HEIGHT 2' 11"
HEIGHT TO SEAT 1' 4-3/4"	DIAMETER 4'	HEIGHT TO SEAT 1' 4-3/4"
WIDTH 1' 11"	WIDTH AT LEGS 2' 6"	LENGTH 4' 10"
WEIGHT 133 LBS.	WEIGHT 340 LBS.	WEIGHT 195 LBS.



**Gothic Love Seat, Settee, Chair & Bench**

LOVE SEAT	SETTEE	CHAIR	BENCH
HEIGHT 2' 11-1/2"	HEIGHT 3' 1"	HEIGHT 2' 11"	HEIGHT 1' 5"
HEIGHT TO SEAT 1' 5-1/2"	HEIGHT TO SEAT 1' 6"	HEIGHT TO SEAT 1' 6"	LENGTH 4' 6"
LENGTH 3' 7"	LENGTH 5'	WIDTH 2' 1"	WIDTH 1' 3"
DEPTH 1' 5"			
WEIGHT 135 LBS.	WEIGHT 185 LBS.	WEIGHT 105 LBS.	WEIGHT 160 LBS.



**Botanical Garden Settee**

HEIGHT 3' 4"  
 HEIGHT TO SEAT 1' 3-1/2"  
 LENGTH 5' 4"  
 SEAT WIDTH 1' 2"  
 DEPTH 2' 1"  
 WEIGHT 264 LBS.



**Laurel Settee and Chair**

CHAIR	SETTEE
HEIGHT 2' 8"	HEIGHT 2' 8"
LENGTH 2' 6"	LENGTH 3' 7"
WIDTH 2' 8"	WIDTH 2' 8"
WEIGHT 64 LBS.	WEIGHT 150 LBS.



# Statuary

**Mercury**  
 HEIGHT 8'  
 WIDTH 3' 6"  
 WEIGHT 110 LBS.



**Whippet**

**LARGE**  
 HEIGHT 1' 10-1/2"  
 LENGTH 4' 2"  
 WIDTH 9-1/2"  
 WEIGHT 218 LBS.

**SMALL**  
 HEIGHT 1' 6"  
 LENGTH 2' 11"  
 WIDTH 8"  
 WEIGHT 135 LBS.



**Labrador Retriever**

HEIGHT 1' 6"  
 LENGTH 3' 8"  
 WIDTH 10"  
 WEIGHT 203 LBS.



**Elk**

HEIGHT (TOE TO RACK) 6' 4-3/4"  
 LENGTH 4' 6"  
 WIDTH 1' 7"  
 BASE HEIGHT 4-3/4"  
 WEIGHT 650 LBS.



**Jockey**

HEIGHT (HEAD TO TOE) 3' 5"  
 WIDTH 2'  
 BASE HEIGHT 8-3/4"  
 WIDTH 1' 1"  
 WEIGHT 128 LBS.  
 (CUSTOM PAINTED SILKS AVAILABLE)



**Lion**

HEIGHT 1' 6"  
 LENGTH 3' 5"  
 WIDTH 11"  
 WEIGHT 200 LBS.



**Scottish Terrier**

HEIGHT 1' 10"  
 LENGTH 1' 10"  
 WEIGHT 45 LBS.



**Deer**

HEIGHT (TOE TO RACK) 4' 10"  
 BASE 3' 11" x 1' 3" x 4"  
 WEIGHT 400 LBS.



**Birdhouse**

HEIGHT 1' 1-1/2"  
 WIDTH 11-1/2" (PERCH TO PERCH)  
 7-3/4" SQUARE AT ROOF  
 WEIGHT 18 LBS.



**Irish Setter**

HEIGHT 2' 9"  
 LENGTH 3'-1/2"; WIDTH 1' 8"  
 WEIGHT 320 LBS.



**Crouching Squirrel**

HEIGHT 8-3/4"  
 LENGTH 8-3/4"  
 WIDTH 5-1/4"  
 WEIGHT 6-1/2 LBS.



**Frog**

HEIGHT 2-1/4"  
 LENGTH 7-1/2"  
 WIDTH 8"  
 WEIGHT 4 LBS.



**Bunny Statue**

HEIGHT 6-1/2"  
 LENGTH 9"  
 WIDTH 5-1/2"  
 WEIGHT 10 LBS.



**Flying Horse**

HEIGHT 8"  
 LENGTH 13"  
 WIDTH 4"  
 WEIGHT 10 LBS.



**Elephant**

HEIGHT 8"  
 LENGTH 13"  
 WIDTH 5"  
 WEIGHT 10 LBS.

**Screaming Swan & Cygnet**

SWAN	CYGNET
HEIGHT 2' 6"	HEIGHT 1'
LENGTH 1' 7"	LENGTH 1' 2"
WIDTH (AT WINGS)	WIDTH 1'
2' 2-1/2"	WEIGHT 60 LBS.
WEIGHT 64 LBS.	



**Small and Large Hebe**

LARGE HEBE  
HEIGHT 5' 2"  
BASE DIAMETER 1' 10"  
WEIGHT 115 LBS.

SMALL HEBE  
HEIGHT 3' 4"  
BASE DIAMETER 1' 2"  
WEIGHT 50 LBS.



**Griffin**

HEIGHT 1' 8" OVERALL  
LENGTH 2'  
WIDTH 8"  
WEIGHT 80 LBS.



**Pineapple Mailbox**

HEIGHT 7' 3" OVERALL  
DIAMETER 6-3/4"  
WEIGHT 135 LBS.



**No. P-40 Mailbox**

HEIGHT 5' 6" OVERALL  
DIAMETER 5-3/4"  
WEIGHT 125 LBS.



**No. P-35 Mailbox**

HEIGHT 4' 9" OVERALL  
DIAMETER 4-1/2"  
WEIGHT 120 LBS.



**Windemere Mailbox**

HEIGHT 5' 6" OVERALL  
DIAMETER 5-3/4"  
WEIGHT 125 LBS.

**Great Outdoors Fireplace**

HEIGHT 57"  
DIAMETER 40"  
DIAMETER AT TOP 9"  
WEIGHT 750 LBS.



**Leaf Light**

HEIGHT 13"  
WIDTH 11-1/2"  
WEIGHT 18 LBS.



# Urns

## English Urn

HEIGHT 2' 4"  
 BASE 1' SQUARE  
 BOWL DIAMETER 1' 10"  
 WEIGHT 180 LBS.



## Classic Urn

	No.1	No.2	No.3
HEIGHT	25"	20"	17"
BASE (SQ.)	11"	11"	7"
OUTSIDE BOWL DIAMETER	25"	21"	18"
WEIGHT (LBS.)	125	89	67
SHOWN WITH MEDIUM BASE			
HEIGHT 7"			
WIDTH 14" SQUARE			
WEIGHT 40 LBS.			



## Roman Urns

LEFT TO RIGHT	No.3	No.4	No.1	No.2
HEIGHT	36"	49"	30-1/2"	34"
OUTSIDE BOWL DIAMETER	30"	36"	15"	24"
BASE (SQ.)	20-1/2"	20"	10"	15"
WEIGHT (LBS.)	227	384	116	153



## Cotillion Urn Stand with Palo Alto Urn

HEIGHT 59"  
 BASE 11" SQUARE  
 TOP 10" SQUARE  
 PALO ALTO URN SHOWN ON PAGE 53



## West Point Urn

HEIGHT 20-1/2"  
 DIAMETER (TOP) 18"  
 BASE 9-1/2" SQUARE  
 WEIGHT 53 LBS.



## Tiny French Urn

HEIGHT 8-1/2"  
 DIAMETER 11"  
 BASE 4-3/4" SQUARE  
 WEIGHT 18 LBS.

**Additional Urn Bases**

	VERY SMALL	SMALL	MEDIUM	LARGE
OPENING AT TOP	4-1/4"	7-3/4"	10"	12-3/8"
OVERALL WIDTH	8-1/2"	10-1/2"	14"	18-1/2"
HEIGHT	4"	6"	7"	9-3/4"
WEIGHT (LBS.)	15	21	40	70

ADDITIONAL BASES MAY BE USED WITH ANY OF OUR URNS TO ADD HEIGHT. WHEN ORDERING, PLEASE SPECIFY IF YOU WANT THE URN WELDED TO THE BASE. ANCHORAGE OPTIONS ARE AVAILABLE.

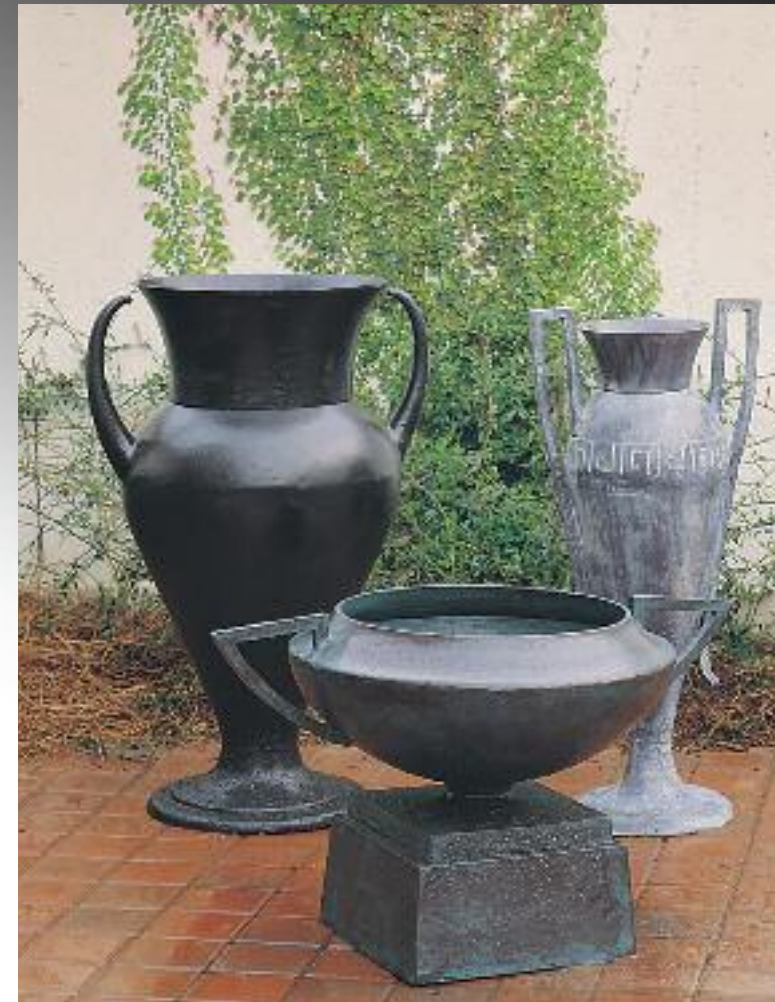


Selected urns can be modified into fountains.



**Palo Alto Urn**

	No.1	No.2	No.3	No.4
HEIGHT	10"	16"	20"	24"
BASE (sq.)	7"	9"	11"	13-1/2"
OUTSIDE BOWL DIAMETER	9"	12"	16"	20"
WEIGHT (LBS.)	15	22	47	80



**Low, Tall & Large Grecian Urns**

**LOW URN**

HEIGHT 1' 2"  
DIAMETER AT TOP 1' 6"  
OUTSIDE BOWL DIA. 2'  
WIDTH AT HANDLES 2' 11"  
BASE 12-1/2" SQUARE  
WEIGHT 80 LBS.

**LARGE URN**

HEIGHT 3' 2-1/2"  
DIAMETER AT TOP 1' 6-1/2"  
OUTSIDE BOWL DIA. 1' 8"  
WIDTH AT HANDLES 2' 1"  
BASE DIAMETER 1' 4"  
WEIGHT 146 LBS.

**TALL URN**

HEIGHT 2' 11-1/2"  
DIAMETER AT TOP 7"  
OUTSIDE BOWL DIA. 9-3/4"  
WIDTH AT HANDLES 1' 6"  
BASE DIAMETER 1'  
WEIGHT 80 LBS.



**Tower Garden Grove Urn**

HEIGHT 2' 8"  
BASE 1' 4" SQUARE  
BOWL DIAMETER 2' 6"  
DIAMETER AT TOP 1' 6"  
WEIGHT 280 LBS.

**No. 5 Venetian Fluted Urn on Lion Base**

	No.1	No.2	No.3	No.4	No.5
HEIGHT	16"	19"	23"	28"	34"
DIAMETER (TOP)	13"	15"	18"	23"	29"
BASE (SQUARE)	6-1/2"	8"	9-1/2"	12-1/2"	15"
WEIGHT (LBS.)	30	45	70	135	245



## 1. How to Order

You may place your order over the phone with one of our sales representatives at 1-800-824-2157, or visit our website at [www.robinsoniron.com](http://www.robinsoniron.com).

## 2. Finishes

Tnemec® brand spray applied architectural coatings are used on all Robinson Iron products unless otherwise specified. Fountains and pieces exposed to constant moisture receive a brushed zinc-rich pre-prime coating to inhibit corrosion. A two part epoxy primer is applied as a standard to all pieces. Finishes are in acrylic polyurethane in the client's color of choice. Our standard colors of gloss white, gloss black, verde gris, Charleston green and Pompeian green can be found on page 10 of the catalog. Special color swatches provided by the client can be matched in Tnemec®.

*Note-Antique finishes may vary from piece to piece.*

## 3. Delivery/Design Services

If no special pattern-making or finishing is required, our average delivery is four to six weeks. Most Robinson pieces are featured in sand cast iron or aluminum, but they can be cast and assembled in bronze if desired. Our experience and expertise can enable you or your designer to realize any project. Conceptual drawings are part of every proposal accompanied by a detailed quotation. Custom work requires ten to twelve weeks from receipt of approved drawings.

## 4. Restoration Services

Robinson Iron is the major resource for architects and designers concerned with quality restoration of cast and wrought metals. Our team of experts offers close on site consultation in order to evaluate and document existing conditions. Following a specific Restoration Methodology, Robinson Iron performs lead abatement, removal, refurbishment, reassembly, delivery and installation of all materials. Please inquire about the distinguished list of projects restored by our firm.

## 5. Shipping

Items of less than 150 lbs. will be shipped via United Parcel Service. Freight rates for common carrier shipments may be obtained by providing the zip code of the delivery destination. Provisions for the unloading of common carrier shipments must be made by the client prior to delivery.

## 6. Terms

All major credit cards are accepted and special quotations are available for custom designs and quantities of twenty or more. Sales tax is not required for interstate orders. Prepayment or c.o.d. is required for first time orders. Thereafter, all orders will be on a net 30 basis. Deposits may be required on some orders with approved credit applications.



# Vulcan Restoration

In 2001, Robinson Iron undertook a truly monumental project—the restoration of Birmingham, Alabama's Vulcan. The 56-foot statue of the Roman god of fire and forge is the tallest freestanding cast iron sculpture in the world. Its removal and installation took 2 years, 11 crane lifts and truckloads of teamwork. Careful historical documentation aided craftsmen in replicating missing parts and designing an internal armature.

The project gained national attention earning Robinson Iron the prestigious National Preservation Honor Award given by the National Trust for Historic Preservation.

Learn more about  
*The Vulcan Restoration*  
by visiting  
[www.robinsoniron.com](http://www.robinsoniron.com)



Restorations

Replications

Custom  
Casting

**Robinson Iron**

P.O. Box 1119 • Alexander City, Alabama 35011-1119  
1856 Robinson Road • Alexander City, Alabama 35010  
1-800-824-2157 • (256) 329-8486 • Fax (256) 329-8960  
[www.robinsoniron.com](http://www.robinsoniron.com)