

Roof Hatches and Roof Access

07 72 33

**Roof Hatches
and
Roof Access**



MADE IN THE
USA SINCE 1942



Precision Ladders, LLC • P.O. Box 2279 • Morristown, TN 37816
Phone: (800) 225-7814 or (423) 586-2265 • Fax: (423) 586-2091
email:laddersales@precisionladders.com www.precisionladders.com

Precision Ladders, LLC

www.PrecisionLadders.com



Roof Hatches and Roof Access

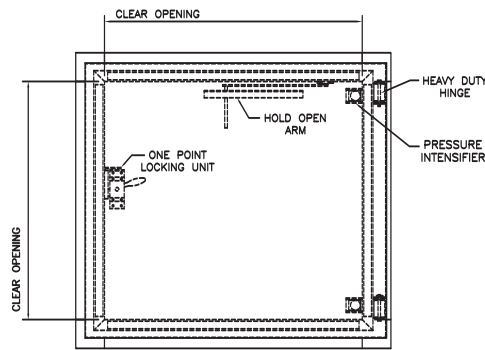
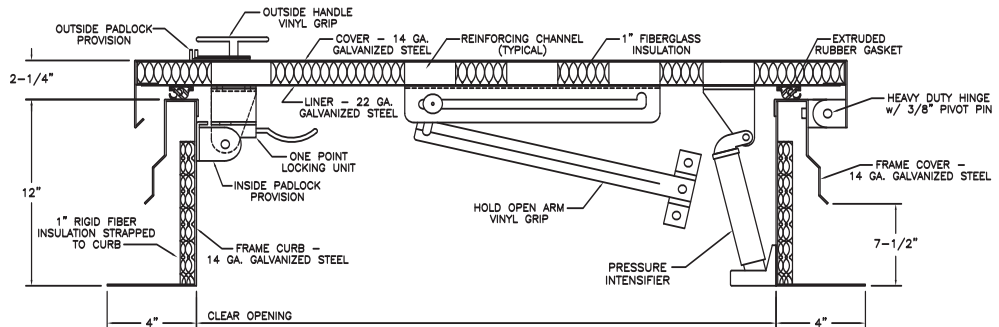
Precision Ladders, LLC

www.PrecisionLadders.com

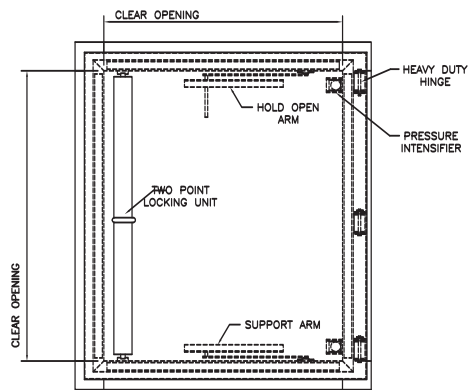


Roof Hatches

Precision Ladders offers 3 models of Roof Hatches for roof access from various types of ladders and stairs. All of the hatches were designed with ease of operation and safety of the user in mind. All models come standard with zinc plated hardware including latch assemblies, hinges and hold open arms. All hatches come with exterior and interior padlock provisions. Both galvanized steel and aluminum models are available. The sizes listed in the chart below are in stock and can be shipped quickly.



MODELS PLH & PSRH
(WITH 1 POINT LATCH)



MODEL PNRH (WITH 2 POINT LATCH)



STANDARD SIZES AND WEIGHTS

CLEAR OPENING	WEIGHT	
	GALVANIZED	ALUMINUM
PLH-(*) 2'-0" X 2'-0"	110#	62#
PLH-(*) 2'-6" X 2'-6"	140#	90#
PLH-(*) 2'-6" X 3'-0"	160#	100#
PLH-(*) 3'-0" X 3'-0"	185#	140#
PSRH-(*) 2'-6" X 4'-6"	240#	165#
PNRH-(*) 2'-6" X 5'-4"	260#	225#
PNRH-(*) 2'-6" X 6'-0"	270#	235#
PNRH-(*) 3'-0" X 5'-0"	280#	230#

*USE DESIGNATION LETTER FOR TYPE OF METAL
A-ALUMINUM G-GALVANIZED STEEL

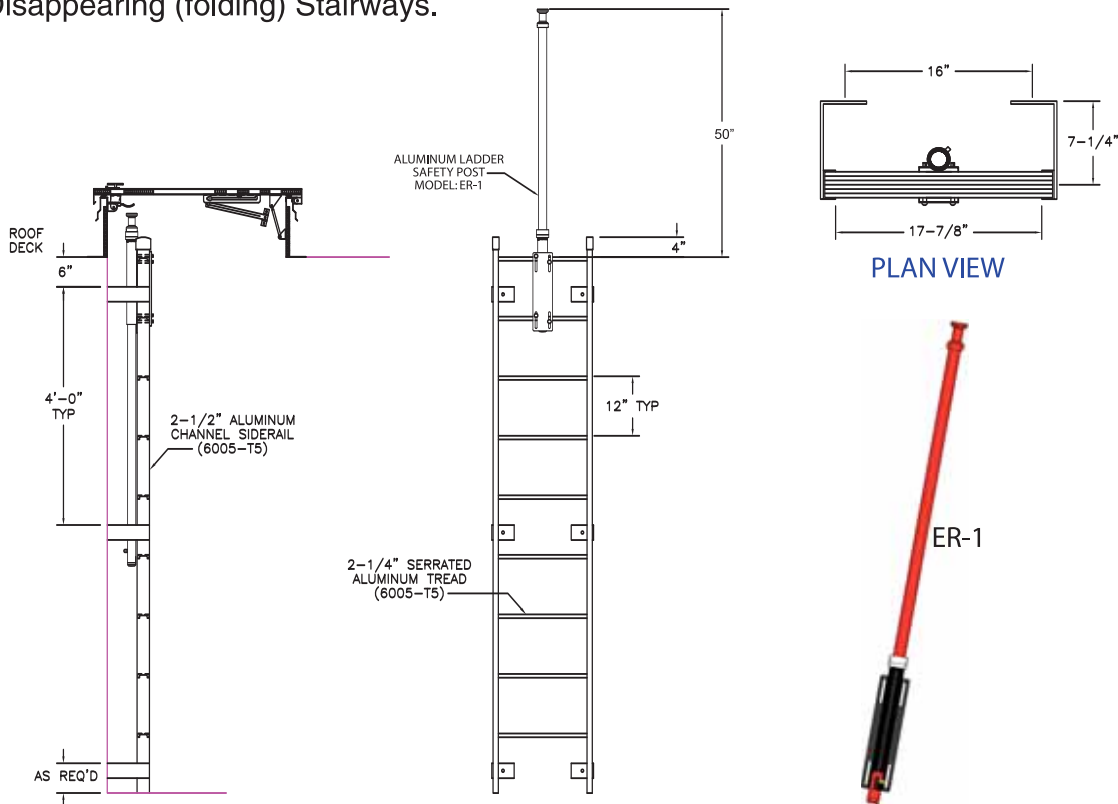
Phone: (800) 225-7814 or (423) 586-2265 • Fax: (423) 586-2091
DWG files available for download @ www.precisionladders.com
Consult factory for custom sizes and options

Roof Access Systems

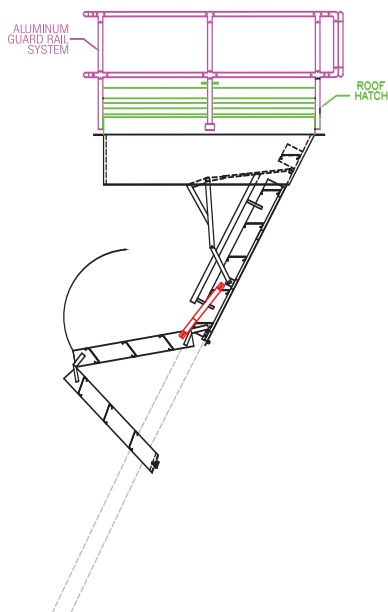
07 72 33

**Roof Hatches
and
Roof Access**

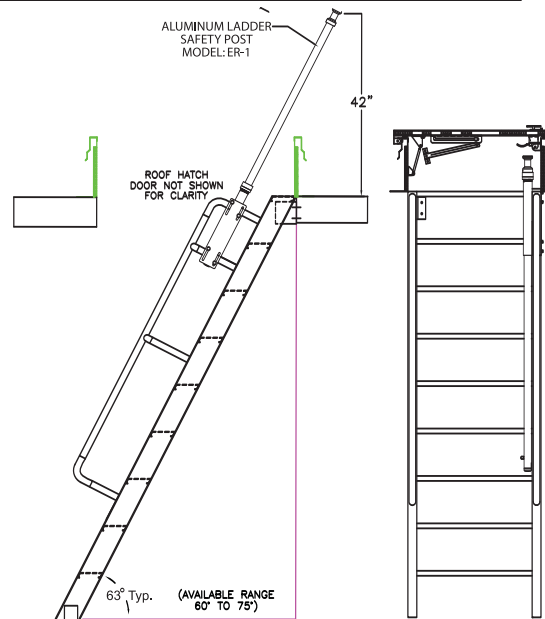
Precision Ladders offers a variety of complete Roof Access Systems which include everything a designer needs to provide code compliant access to the roof deck from a single source. These Roof Access Systems include the Ladder, Ladder Safety Post, Roof Hatch and Guard Rails for the hatch opening. Precision Ladders' Roof Access Systems can be configured to accommodate Fixed Vertical Ladders, Inclined Ships Ladders, Alternating Tread Ladders and Disappearing (folding) Stairways.



Fixed Vertical Wall Ladder to Roof Hatch with Extend-A-Rail



Super Simplex Disappearing Stairway with Roof Hatch and Guard Rail



Inclined Ships (or Alternating Tread) Ladder to Roof Hatch with Extend-A-Rail

Precision Ladders, LLC

www.PrecisionLadders.com





Specifications

SECTION 07 72 33 Roof Hatches

PART 1: GENERAL 1.01 SUMMARY

- A. Metal roof hatches with integral curbs.
- B. Products required, but not supplied under this section.
 - 1. Required fasteners.

1.02 SYSTEM DESCRIPTION

The roof hatches shall have a clear opening as shown on the drawings, and shall consist of an insulated cover and frame. Material shall be **G-90 galvanized steel and have a factory applied coat of primer OR .090 Aluminum H-14 3003, mill finish.** Corners shall be fully welded and ground smooth. A gasket between cover and frame shall create a weathertight seal.

1.03 DELIVERY, STORAGE, AND HANDLING

- A. Examine hatch when it arrives on site. Notify the carrier and manufacturer of any damage.
- B. Store hatch until installation under roof, if possible; or, if stored outside, under a tarp or suitable cover.

1.04 WARRANTY

The hatch carries a limited warranty of 5 years against defective material and workmanship, covering parts only, no labor or freight. Defective parts, if deemed so by the manufacturer, will be replaced at no charge, freight excluded, upon inspection at manufacturer's plant which warrants same.

1.05 MAINTENANCE

- A. Under normal usage, the hatches shall require no preventive maintenance.
- B. No "spare parts" shall be required.

PART 2: PRODUCTS

2.01 MANUFACTURER

Precision Ladders, LLC
P.O. Box 2279
Morristown, TN 37816
Phone: (800) 225-7814
Fax: (423) 586-2091

2.02 MATERIALS

A. CURB

1. Formed from **14 gauge galvanized steel of lockforming quality per ASTM A-525 with G90 coating OR .090 aluminum H-14 3003, mill finish.**
2. Sheathed with 1" of rigid fiber board insulation.
3. Height of 12" unless indicated otherwise on drawings.
4. 4" integral flange for securing to roof.
5. Hinges connecting curb to door shall be 1/8", 2 piece formed steel with 3/8" pivot pin.

B. COVER

1. Formed from **14 gauge galvanized steel of lockforming quality per ASTM A-525 with G90 coating OR .090 aluminum H-14 3003, mill finish.**

2. Liner shall be **22 gauge galvanized steel with G90 coating OR .040 aluminum H-14 3003, mill finish.**
3. Insulation between cover and liner to be 1" thick U.L. plain fiberglass 0.75# density.
4. Cover shall be reinforced as required with 11 ga. steel channel. (or Aluminum)
5. Extruded rubber gasket within a 20 gauge formed steel track shall be securely attached to the liner to make the unit weathertight.
6. A one point cab lock is to be provided with a built-in inside handle on units with a length of 4' 6" or less. On units of greater length, a 2 point slam lock will be used.
7. Exterior of cover shall be devoid of hardware with the exception of the outside handle.
8. Outside handle shall be vinyl coated, steel T-handle.
9. Automatic hold-open device shall be formed from 3/16" steel flat bar and 1/2" diameter steel round stock with a vinyl grip.
10. Padlock provisions provided on both interior and exterior of unit.

C. PRESSURE CONTROL

Opening/closing assistance/resistance shall be provided by enclosed spring shocks.

D. HARDWARE

1. Corrosion resistant hardware and fasteners are standard.
2. Optional Stainless Steel hardware is available.

E. MANUFACTURED UNITS

The Hatch is a Model _____*
(*see CHART 1 and 2 on the inside cover).

F. ACCESSORIES

1. Optional Safety Handrail to facilitate getting on or off roof. (mounted to corner of hatch curb)
2. Optional Extend-A-Rail retractable post to facilitate getting on or off roof (mounted to ladder)
3. Optional Aluminum Guard Rail to protect the roof opening. (mounted to the hatch curb)

G. FABRICATION

The hatch is completely fabricated ready for installation before shipment to the site.

H. FINISH

Red oxide primer OR Mill finish aluminum.

PART 3: EXECUTION

3.01 EXAMINATION

Examine rough opening in roof for opening size and squareness.

3.01 INSTALLATION

Install per the manufacturer's installation instructions.

3.02 FIELD QUALITY CONTROL

The manufacturer has representatives in all areas of the United States and Canada. For the name of the closest representative, call (800) 225-7814.

Note: Choices in the above specification are presented in bold print, please choose one only.