



Creative

Architectural

and

Residential

Ceramics



Reading Terminal Head House, Philadelphia/PA
Keope Quarzi Series

TABLE OF CONTENTS

GLAZED CERAMIC TILES

CHROMA ²	2-3
POOL CERAMICS	4
TUNNEL CERAMICS	4

MOSAIC TILES

JASBA M2 & C2	5
---------------	---

FLOOR TILES

KEOPE PORCELAIN	6-7
-----------------	-----

TECHNICAL INFORMATION	8
-----------------------	---

DSA was created at the beginning of 2000 bringing together the commercially known **BUCHTAL** brand and the residential-driven name of **JASBA**. Under the new company, we present a new look to the market with two divisions to service the demands in the commercial as well as the residential sector. Our aim is to bring creativity and competence in an attractive package to all facets of ceramic tile applications. Whether it is a special size or a particular color you want, DSA should be your first call.

Browse through our colorful world of building ceramics and experience the vast array of products we can offer...



CHROMA II

GLAZED CERAMIC WALL TILES

The Colors of Architecture

The CHROMA II series was completely revamped to meet today's current trends in architectural and color design, thus the new color palette opens up with four expressive arrays of color themes: Vigorous, Fresh, Pure and Warm.

CHROMA II offers one of the most extensive lines of glazed ceramic tiles ever. 47 colors that can be combined with finely shaded solutions and intriguing contrasts. Complemented by new sizes of 10x20 and 4x12 inch including the high and deep relief tiles, CHROMA II also harmonizes with the other lines available within the System Chroma, e.g. Quantum unglazed floor tiles and a full range of non-slip pool ceramics. That way it offers a multitude of possibilities for designs with an unending palette of combinations and the choice of overall 87 different color variations. Additionally, system PLURAL is a completely modulated system offering alternative wall, floor, trim and mosaic tiles for an added range of Buchtal products.



Both BUCHTAL systems meet all ASTM standards and are frost proof, acid-resistant, non-fading, thereby suitable for interior and exterior use. Further, both series offer the ease-of-cleaning Hydrotect coating as a standard feature for almost all colors and sizes.

Chroma and Plural...the colors, the sizes, the choices. The elements of design!

Customized
Graffiti Effect
for Toronto
Subway Station ▶

Bus Maintenance Station ▼



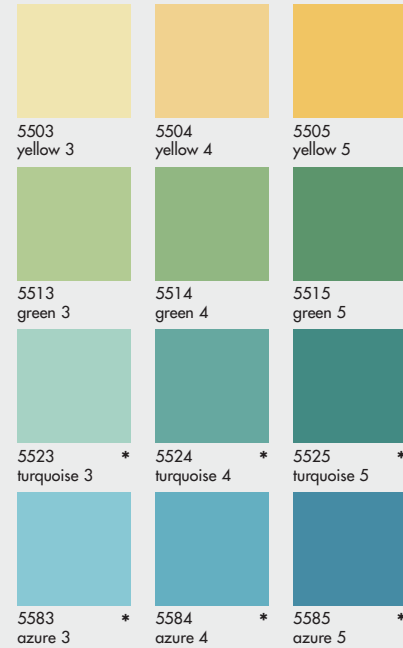
CHROMA II COLOR CHART

09 30 00/DSA
BuyLine 4052



**NEW
COLOR
PALETTE**

Chroma II glazed (silky-matte)



*Thanks to their effect under water (light refraction and reflection), these colors are predestined above all for the design of swimming pools. Depending on the personal taste, other colors can also be used in addition (exception: intense colors nos. 140, 143 and 145).

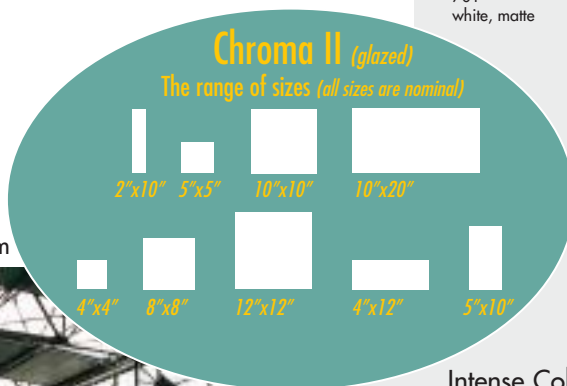
**So-called crazing can occur in the colors nos. 140, 143 and 145 (no reason for complaints, but a typical characteristic). Therefore, they are not suitable for swimming pools, showers and similar areas exposed to water for long periods of time.



Deep Relief Tile



High Relief Tile



▼ Airport Atrium



Intense Colors (glossy)



Contrasting Colors (glossy)

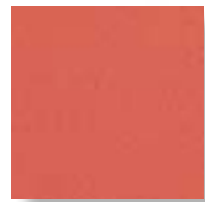
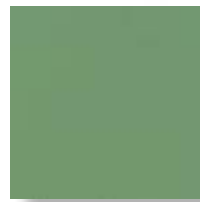


POOL CERAMICS

Aesthetically Pleasing and Technically Sophisticated Approaches to Pools

Sports, leisure, therapeutic, hotel, and private pools are the special strong point of DSA. Technically sophisticated, DSA provides intelligent system solutions for the use of water for recreational and recuperative purposes. To facilitate comprehensive planning, the product range also provides for neighboring areas, such as saunas, fitness, and relaxation areas; Buchtal's advanced pool trim features alternative overflow channels, non-slip barefoot tiles, and accessories for all kinds of bathing landscapes. All enhanced with Hydrotect, Deutsche Steinzeug's revolutionary ease-of-cleaning, anti-mold, fungi and odor tile coating.

Special designs for individual projects can be provided tailor made to your specific needs. Make use of the experience we have gained from the several thousands of swimming pools we have supplied all over the world. Please contact us for more information and ask for our pool brochure.



TUNNEL CERAMICS

High-Performance Tiles for High-Impact Areas

DSA is the only remaining manufacturer offering white bodied, keyback tunnel tile. Our Chroma² glazed ceramic keyback tiles have been used on tunnels around the world. In the US alone, tunnels have been designed with 4 ¼ x 4 ¼, 5x10 and 8x8 sizes. Most recently, DSA products were used in the Lucius J. Kellam, Jr. Bridge-Tunnel across the Chesapeake Bay near Norfolk, VA and the Wheeler Tunnel in WV. The special keyback profile is required for structural purposes as it relates to vibration and impact in a tunnel environment. The key-back provides a mechanical bond, in addition to the chemical bond of mortar that affords engineers a comfort factor over traditional tile. In addition, Chroma²'s properties can meet the stringent requirements set forth by the State Departments of Transportation and other governmental concerns, such as bond strength, color measurement, glaze hardness and water absorption.



JASBA MOSAIC M2, C2 & FELICE

09 30 00/DSA
BuyLine 4052

Classic Form, Understated Elegance, Exquisite Performance.

With a beauty and durability all their own, Jasba M2 (square), C2 (penny round) and Felice (square raised texture) glazed porcelain mosaics



add a distinctive look to any surface. Residential homes, lobbies, lavatories, pools and the hospitality industry, commercial murals and logos can be easily depicted using versatile Jasba porcelain mosaics.

Lend a bathroom an aura of cleanliness and warmth. Accentuate the architecture of a kitchen with the unadorned beauty of mosaics and the exclusivity of the material. Be inspired by mosaics to make more of every room.



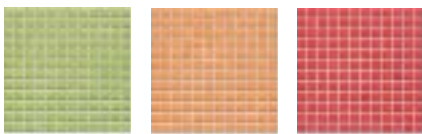
Throughout history and still today, mosaics have lent a feeling of cleanliness and sensuous flair, and now Jasba mosaics

advance this further by offering HYDROTECT, DSA's patented ease of cleaning and odor-reducing surface coating, as standard on all tiles. Both M2 and C2 also offer anti-slip finishes (M2/C2 SECURA) in multiple attractive colors for matching floor to wall design and room concepts, while Felice offers elegant floor tile for a finishing touch.



Jasba  Each 1x1 piece of Jasba M2, C2 & Felice tiles are individually beveled on their edges, frost proof, and suitable for exterior vertical walls. They are net mounted on back and come in 12"x12" sheets. Ask for our full catalog and current sample binders.

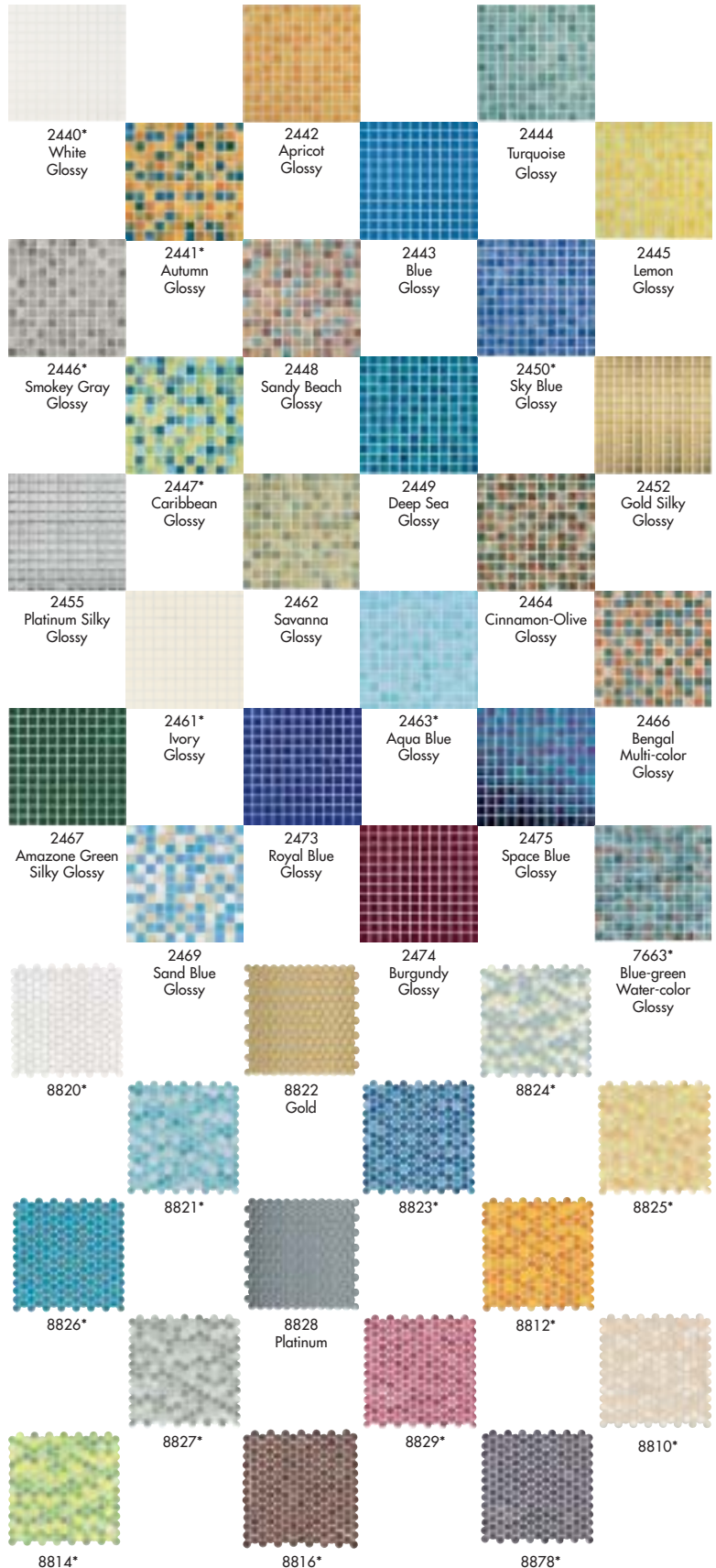
ASTM Coefficient of Friction for M2/C2 Secura: 0.8 Wet



1524

1525

1526



*Available in anti-slip finish, SECURA.

KEOPE PORCELAIN TILES

The Clear Choice in Contemporary Design



CERAMICHE
KEOPE®

Keope porcelain tiles are produced in Italy and distributed in the U.S. solely by DSA, Inc. A stunning collection of porcelain floor tiles is available in monochromatic and granite-like colors, as well as in a variety of stone look-alike finishes. It offers the designer opportunity to achieve elegant durability with ease of maintenance and gain 'Green' Building merits by choosing EcoLabel certified products.

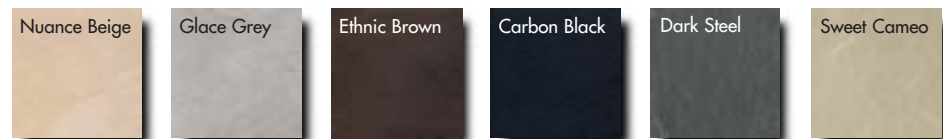
Please contact DSA for brochures and architectural sample binders available for each series, as well as for more information on EcoLabel certification.



KEOPE SIZE AVAILABILITY OVERVIEW							
Sizes▼	Series▶	Arkasa	Contempora	Index	Life	Pietra di Noto	Wish
12 x 12		◆		◆		◆	
12 x 24		◆		◆	◆	◆	◆
8 x 24			◆				
9 x 18		◆		◆	◆	◆	
18 x 18		◆	◆	◆	◆	◆	◆
24 x 24		◆	◆		◆	◆	◆
Bullnose		◆	◆	◆	◆	◆	◆
Fascia Border		◆	◆	◆	◆	◆	◆
Mosaics		◆	◆	◆	◆	◆	◆
Step Tread		◆		◆			
Listello Trim		◆	◆	◆	◆	◆	◆
Colored Accents		◆	◆	◆	◆	◆	◆

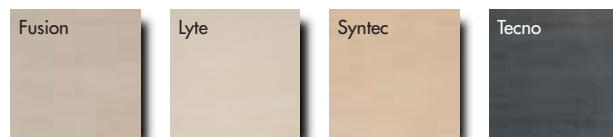
ARKASA ASTM Coefficient of Friction 0.7 Wet

The ARKASA series is fully homogenous and reproduces the look usually found in natural stone, slate or terracotta. Thanks to the special manufacturing process "Dry Tech", this porcelain tile is highly resistant to trampling and scratching. All colors are available in 12x12, 18x18, 12x24, 9x18 and 24x24 size. Special deco pieces such as mosaic listello and patchwork complement the line for setting striking accents.



CONTEMPORA ASTM Coefficient of Friction: 0.7 Wet

This new Keope series combines single elements to create a unitary and essential mode of expression. The CONTEMPORA series blends subtle "wenge" veins and velvety slashes of color to give life to a contemporary style. The series is ideal for refined environments in which color and the warmth of wood play an important role, within a modern style.



EcoLabel



more info: www.keope.com



INDEX ASTM Coefficient of Friction: 0.7 Wet

This is the new series of porcelain stoneware, recapturing the beauty of quartzite, stones used for building since the Middle Ages. Exceptional properties, such as high resistance, hardness, brightness and a variety of colors, which have made quartzite so appreciated as building material throughout the centuries, are all present in the INDEX series, and improved thanks to the use of the most advanced production technology.



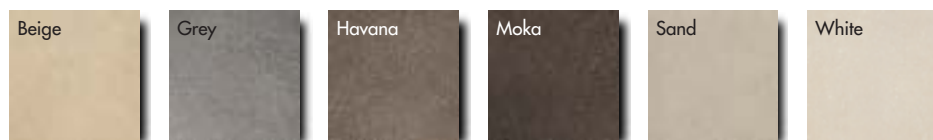
LIFE ASTM Coefficient of Friction 0.9 Wet

The LIFE rectified porcelain stoneware collection represents the latest in terms of technology for dry coloring porcelain mixtures, the most cutting-edge technique for producing modern porcelain tiles. Life is available in the natural MATT finish, the soft and reflecting HONED finish or in the TEXTURED version for refined exteriors and unique walls. See chart on opposite page for sizes and trims.



PIETRA DI NOTO ASTM Coefficient of Friction 0.8 Wet

This is the new collection by Keope that recalls a stone of Sicilian origin, characterized by rich patterns and small colored inserts. Pietra di Noto is rectified and offered in both a natural MATT and HONED finish. The product's beauty is the result of delicate differences in pattern that make each piece unique and identical at the same time. See chart on opposite page for sizes and trims.



WISH ASTM Coefficient of Friction 0.6 Wet

Slim and precious patterns animate the surface and provide an opalescent effect in the new WISH rectified porcelain collection. The aesthetic impact of the two finishes - brazed LINE finish and the dotted PIN finish - is balanced with technical sophistication from DryTech, Keope's cutting-edge process for dry coloring porcelain mixtures which increases durability and hardness. See chart on opposite page for sizes and trims of this latest striking addition.



Color samples as shown may not be an exact product color match. DSA, Inc. explicitly disclaims any liability resulting from product selections that rely solely upon the color samples provided herein. Contact DSA for actual product samples prior to selection.

TECHNICAL INFORMATION

TECHNICAL PROPERTIES

Test	Test Method	Target/Tolerance Requirements
Water Absorption (Chroma glazed tile)	ASTM C373	Vitreous according to ANSI A137.1-1988
Water Absorption (Keope porcelain tile)	ASTM C373	Impervious according to ANSI A137.1-1988
Length	ASTM C499	Exceeds ANSI A137.1-1988
Width	ASTM C499	Exceeds ANSI A137.1-1988
Thickness	ASTM C499	Exceeds ANSI A137.1-1988
Flatness of Surface (Warpage)	ASTM C485	Exceeds ANSI A137.1-1988
Rectangularity (Wedging)	ASTM C502	Exceeds ANSI A137.1-1988
Abrasive Resistance	ASTM C501	Exceeds ANSI A137.1-1988
Bond Strength	ASTM C482	Exceeds ANSI A137.1-1988
Breaking Strength	ASTM C648	Exceeds ANSI A137.1-1988
Frost Resistance	EN 202*	Guaranteed
UV Resistance	DIN 51094*	Guaranteed
Acid/Alkali Resistance	EN 106*	Guaranteed

*Details of the DIN/EN Standards may be obtained from DSA, Inc. Please contact us for complete test data on specific series.

MAINTENANCE RECOMMENDATIONS:

Maintain tiles using clean water and a detergent, such as Hillyard's Super Shine-All or MTA's Star Porcelain & Ceramic Tile Cleaner as necessary. Always follow up with a rinse of clean water. Regular maintenance is recommended to avoid build-up of dirt, residue, grease, soap, detergents, or other external contaminants. Non-water soluble stains may require the use of a solvent such as acetone. Application of a sealer is not necessary. As with any ceramic tile product, the tile will wear over a period of time, depending on the traffic and usage.

SETTING RECOMMENDATIONS:

DSA recommends thin-set mortar over level non-moving support, i.e. broom-finished concrete. For concrete with cracking potential, the use of membrane may be appropriate. Please refer to the TCA's Current Handbook for Ceramic Tile Installation. For additional information on setting materials and membranes, please consult Mapei, Laticrete, Custom Building Products, and other manufacturers.

JOINTS:

DSA recommends a joint size of 1/4" Due to variation in tile series' dimensions, a slightly smaller or larger grout joint may be required.

SPECIFICATIONS:

Guideline specifications are available upon request.

COLOR CONSISTENCY:

DSA recommends that the specifier request current samples of the tile color selected. Variations in shade and color are two inherent beauties found in all fired ceramic tile. All DSA tile samples are submitted only in the effort to show a representation of the final product received. We therefore cannot guarantee stocks from warehouse or factory to match submitted samples exactly.



Muhammad Ali Center in Louisville, KY.
Custom-colored KerAion Quadro façade panels form silhouettes.

LIMITED WARRANTY:

Seller warrants that its goods conform to the applicable ANSI, EN and DIN Standards mentioned above. Seller makes no representation or warranty of any other kind express or implied with respect to the goods, whether as to merchantability or fitness for a particular purpose or any other matter.

APPLICATIONS:

Product	Interior Floors	Interior Walls	Exterior Floors	Exterior Walls
CHROMA 2		◆		◆
JASBA M2/C2	◆*	◆	◆*	◆***
KEOPE	◆	◆	◆**	◆
QUANTUM	◆		◆	
PLURAL	◆	◆	◆	◆

* M2/C2 SECURA anti-slip finish only

** Textured surfaces only

*** Excluding metallic finishes

Please note: Any glazed floor tile is subject to abrasion and scratching over a period of time. In areas where heavy traffic and/or pivoting action is expected, DSA recommends unglazed or porcelain floor tiles. DSA generally does not recommend glazed floor tiles for exterior floor area.



Most of our glazed ceramic tiles (Chroma + Jasba) are furnished with the HydroTECT coating (minimum order may be required). HYDROTECT is a truly revolutionary breakthrough technology, which makes tile extremely easy to clean with the assistance from normal daylight. Organic materials are broken down naturally and easily washed away with water, setting new standards for beauty and cleanliness.

The merits of HydroTECT coated tiles are obvious in those areas of application where hygiene is critical, such as hospitals, laboratories, catering kitchens, restaurants and swimming pools.

Please contact us for information about our Ceramic Tile Facade Cladding Systems or refer to Sweet's section 07 44 00 Wall Panels

For pricing, samples and your local distributor contact:



Deutsche Steinzeug America, Inc.

Georgia Location: 367 Curie Drive, Alpharetta, GA 30005 • (770) 442-5500 • Fax (770) 442-5502
California Location: 1239 Allec Street, Anaheim, CA 92805 • (714) 774-7750 • Fax (714) 774-7122
 E-Mail: info@dsa-ceramics.com Homepage: www.dsa-ceramics.com