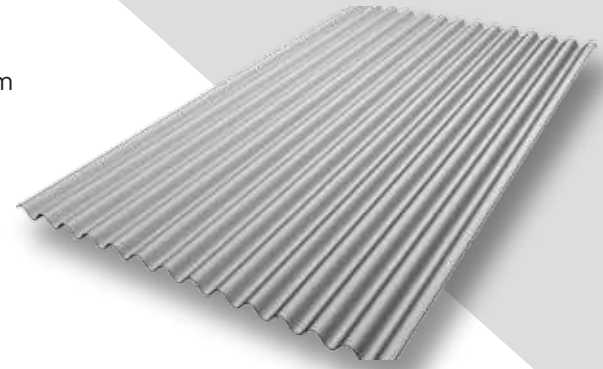


2.67" X .75" CORRUGATED WALL PANEL SYSTEM

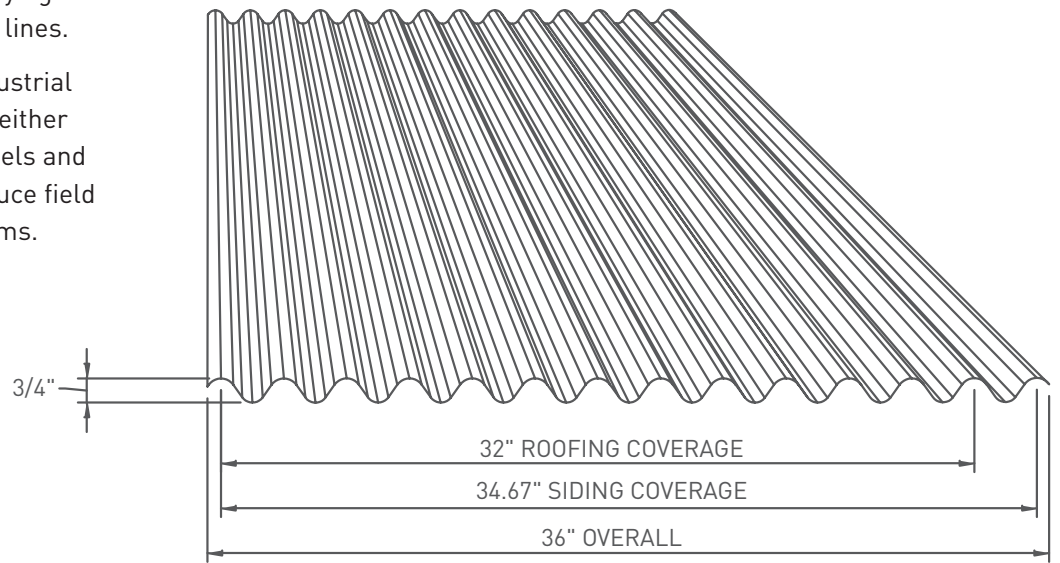
Englert offers a full line of commercial/industrial wall panels, available in a wide range of colors all in a Kynar 500[®] paint finish that meet specific aesthetic and corrosion resistance requirements. Architects and builders can choose from a variety of Englert's economical and durable wall panel systems, suitable for use in pre-engineered metal building applications, agricultural structures, commercial buildings and industrial buildings.



Englert 2.67 inch x .75 inch Corrugated Wall Panel System

The **Englert 2.67 inch x .75 Corrugated Wall Panel System** is specifically designed for use in industrial applications. With a deeper corrugation, this panel provides increased load carrying capacity and adds heavier shadow lines.

All of the Englert Commercial/Industrial Wall Panels can be designed with either rigid board insulation, or liner panels and fiber glass batt insulation, to produce field assembled, insulated siding systems.



2.67" X .75" CORRUGATED LOAD TABLE

STRESS GOVERNING: 37 ksi yield for 18 and 20 Ga; 50 ksi for 22 and 24 Ga (PSF)

| | THICKNESS | # SPANS | SPAN LENGTH | | | | | | | | | | | | |
|--------------------|------------|---------|-------------|-------|----|-------|----|-------|----|-------|----|-------|----|-------|-----|
| | | | 4' | 4' 6" | 5' | 5' 6" | 6' | 6' 6" | 7' | 7' 6" | 8' | 8' 6" | 9' | 9' 6" | 10' |
| STANDARD STOCK | 24 Ga STL. | 1 | 74 | 59 | 48 | 39 | 33 | 28 | 24 | 21 | - | - | - | - | - |
| | | 3 | 93 | 73 | 59 | 49 | 41 | 35 | 30 | 26 | 23 | 21 | - | - | - |
| | 22 Ga STL. | 1 | 92 | 73 | 59 | 49 | 41 | 35 | 30 | 26 | 23 | 20 | - | - | - |
| | | 3 | 115 | 91 | 74 | 61 | 51 | 44 | 38 | 33 | 29 | 26 | 23 | 20 | - |
| NON-STANDARD STOCK | 20 Ga STL. | 1 | 82 | 64 | 52 | 43 | 36 | 31 | 27 | 23 | 20 | - | - | - | - |
| | | 3 | 102 | 81 | 65 | 54 | 45 | 39 | 33 | 29 | 26 | 23 | 20 | - | - |
| | 18 Ga STL. | 1 | 107 | 85 | 69 | 57 | 48 | 41 | 35 | 31 | 27 | 24 | 21 | - | - |
| | | 3 | 134 | 106 | 86 | 71 | 60 | 51 | 44 | 38 | 34 | 30 | 27 | 24 | 22 |

Non-Standard Stock available upon request.

Englert reserves the right to revise, add or delete any detail or information herein without prior notice.