

# ENGLERT *LeafGuard*<sup>®</sup>

*Get it. And forget it.*<sup>®</sup>

Englert LeafGuard<sup>®</sup> is a revolutionary leaf-shedding gutter system. Its unique design allows it to collect water and reject debris, such as leaves and pine needles, by taking advantage of the scientific principle of liquid adhesion.

Englert LeafGuard<sup>®</sup> oversized gutters are the perfect choice for light commercial projects as well as for residential use. They have been tested to over 30 inches of simulated rainfall per hour. Under these conditions, water still carries into the trough without overshooting the gutter.

Englert LeafGuard<sup>®</sup> gutters are roll-formed to seamless custom lengths on-site. They are approximately 20% thicker than conventional gutters and are fastened to the fascia by specially designed internal brackets. LeafGuard<sup>®</sup> is backed with a lifetime limited finish warranty and is available in a wide variety of colors.



For more information on  
**ENGLERT**  
*LeafGuard*<sup>®</sup>  
visit [www.leafguard.com](http://www.leafguard.com)



## Technology Applied

Englert LeafGuard is a revolutionary debris-shedding gutter system. It represents the first significant advance in rain carrying systems in decades, and provides architectural style and unmatched performance for single and multi-family homes. Englert has been in business since 1966 and has been producing LeafGuard gutters since 1993. We consistently set the industry standard with innovative, high-quality products. Englert and LeafGuard are names you can depend on.

Englert LeafGuard is a roll-formed one-piece gutter consisting of a shield, back support wall and a trough, all integrally designed as a one-piece gutter. The shield is a double convolute curve, extending from the back wall out and over the trough. The gutter system is fastened to the structure (fascia) by specially designed brackets (support systems) securing the back wall. It is designed to collect water, yet reject wind-blown debris such as leaves, pinecones and twigs, which are typically carried into conventional gutters by rainwater.

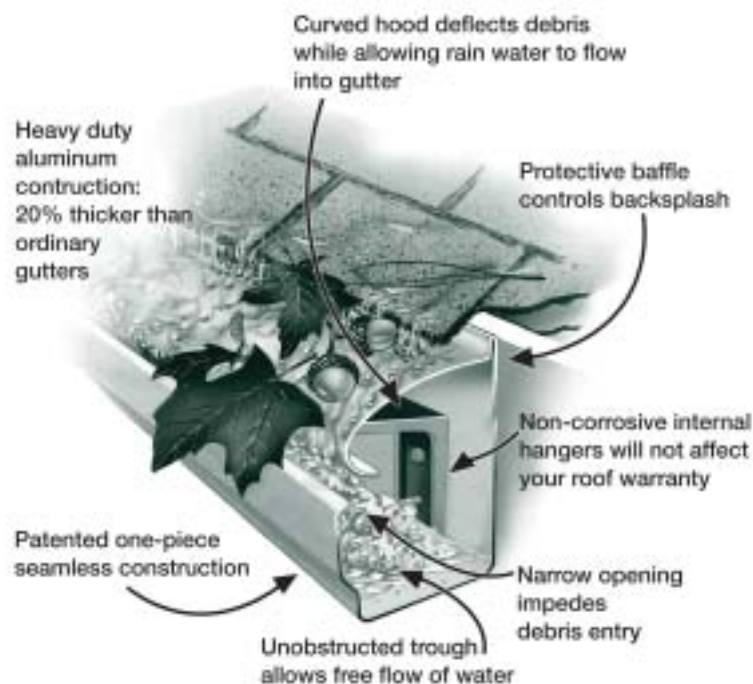
## How It Works

The Englert LeafGuard gutter system works on the scientific principle of liquid adhesion. If you were to hold a drinking glass turned on its side under running water, you'd see the water hit the top of the glass, travel down and around the underside of the glass before falling from the bottom.

The water molecules adhere to the surface of the glass until pulled away by gravity. The same holds true when rainwater flows onto the hood of an Englert LeafGuard gutter. The gutter's patented curved design allows rainwater to travel down, around and into the gutter's trough while deflecting leaves and debris.



- One-piece seamless construction
- Wide range of colors
- Limited lifetime paint finish warranty



## Why You Need Englert LeafGuard

Keeping gutters free from debris is critical. Overflowing water from clogged gutters can cause damage to a home's fascia board, exterior finish, landscaping and foundation.

Until now, clean gutters meant climbing a ladder and cleaning by hand. An unpleasant, dangerous job.

Englert LeafGuard's revolutionary, patented gutter system design lets rain water into the gutter while keeping leaves and debris, even pine needles, out.

For more information on Englert metal roofing, see Sweets 07 71 23/BuyLine 6628.



## RainPro Design Series Gutters – A New and Innovative Choice

RainPro's unique architectural styling is designed to complement the look of today's homes. It achieves high-volume water flow without having to resort to a bulky looking gutter system.

The key to RainPro's uniqueness is that it is a large capacity gutter system that creates maximum water flow, without looking large. With more water flow, RainPro offers ultimate protection and real curb appeal.

Better Design – each component of the RainPro system, from the miters and end caps to the hidden hangers, was designed to achieve a totally refined look. RainPro's unique architectural profile looks like part of the house, and not something that was added on.

Custom fit – All RainPro gutters are seamless. They are custom formed on site to ensure a perfect fit.



**Maximum Flow** – compared to standard gutters RainPro has a larger gutter bottom and downspout which helps remove rainwater from the roof faster to better protect the home.

**Maximum Strength** – RainPro gutters and downspouts are made from heavy-duty hangers for maximum strength.

**Color Choices** – RainPro is available in a wide range of designer colors and has an exclusive paint finish that comes with a limited lifetime warranty.

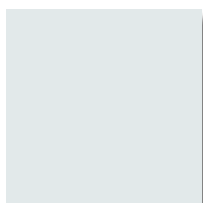


# RainPro/LeafGuard Paint Finish Color Chart

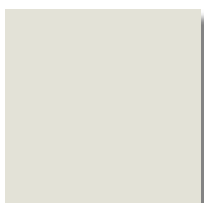
Both RainPro™ & LeafGuard™ feature Englert's exclusive ScratchGuard® paint finish—a high performance coating that delivers architectural style and durability to enhance appearance of the gutter system.

ScratchGuard® has been specifically formulated to curtail installation problems associated with metal marking and marring of LeafGuard™ & RainPro's coated surface. It also provides stain resistance, making it easy to maintain. Unlike inferior coatings which may suffer from permanent "tiger stripping", ScratchGuard® allows surface residue to be easily removed with conventional cleaning solutions and detergents and a clean water rinse. Its unique appearance and architectural styling make it a viable alternative to other more expensive gutter coatings and products.

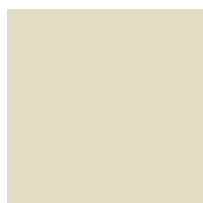
ScratchGuard® Paint Finish is available in the following colors:



White



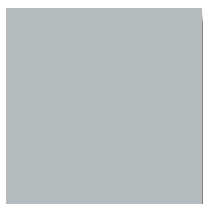
Eggshell



Cream



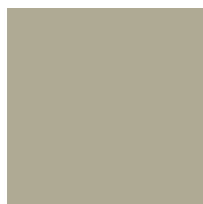
Wicker



Light Grey



Ivory



Tan



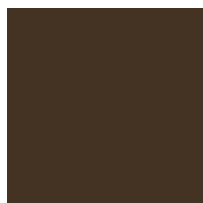
Clay



Territone



Brown



Musket Brown



Coal Grey



ENGLERT  
**LeafGuard**<sup>®</sup>  
Get it. And forget it.<sup>®</sup>

ENGLERT<sup>®</sup>  
**RainPRO**<sup>™</sup>  
DESIGN SERIES

1200 Amboy Avenue, Perth Amboy, NJ 08862  
1.800.leafguard    www.leafguard.com