



# ALTP-2, ALTC-2 Series Pole INSTALLATION INSTRUCTIONS

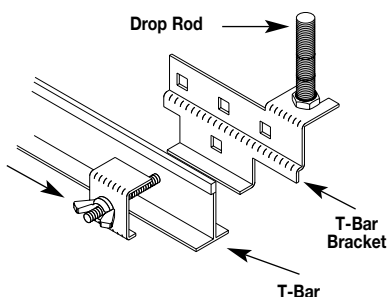
Installation Instruction No.: 42510R1 - Updated May 2004

Wiremold Electrical Systems conform to and should be installed and properly grounded in compliance with requirements of the current National Electrical Code, Canadian Electrical Code or codes administered by local authorities.

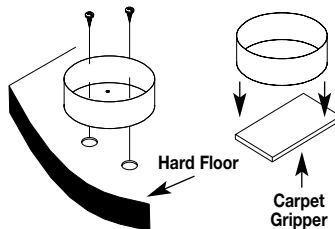
All electrical products may represent possible shock or fire hazard if improperly installed or used. Wiremold electrical products are UL Listed to U.S. and Canadian safety standards, made for interior use only, and should be installed in conformance with current local and/or the National Electrical Code.

## INSTALLATION:

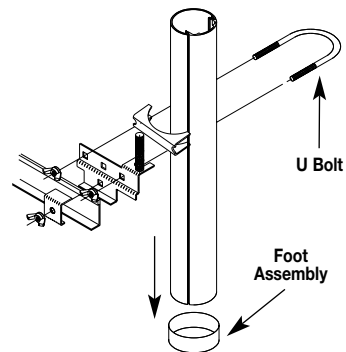
**Step 1** Remove ceiling tile at the poles intended location. Position T-Bar Bracket as shown and secure by tightening clamping wing nut. Brace the bracket with a firmly anchored 3/8" drop rod or equal.



**Step 2** Secure foot to floor. For carpeted floors, install the carpet gripper to the bottom of foot and set in place. For hard floors, either use either double-sided tape or screws to attach to the floor.



**Step 3** Place bottom of pole into foot and loosely hold top of pole to the T-Bar Bracket with the U Bolt.

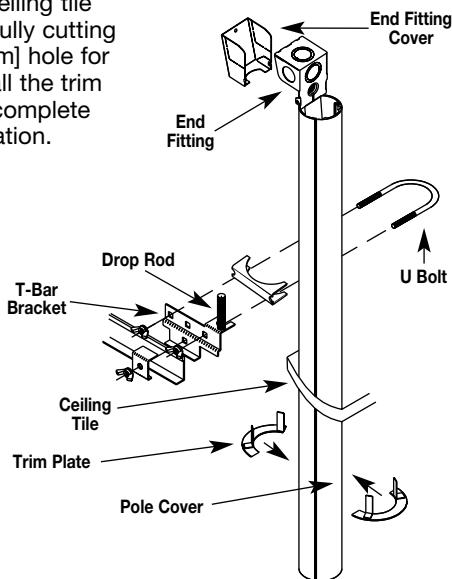


## ALTP-2 INSTALLATION:

**Step 4A** Provide suitable power supply through KO into entrance end fitting. Connect feed wires to leads provided and install cover.

**Step 5A** If communication cables are to be installed, feed through the opening in top of pole. Unsnap pole cover as required to allow routing of cables. Cables may exit through the KO provided, or through openings created in the field. Close the pole cover and tighten T-Bar Bracket U Bolt.

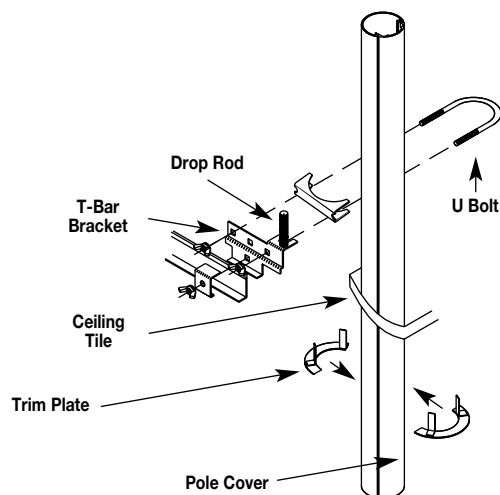
**Step 6A** Replace ceiling tile after carefully cutting a 3" [76mm] hole for pole. Install the trim plates to complete the installation.



## ALTC-2 INSTALLATION:

**Step 4B** To install communication cables, feed through the opening at the top of the pole. Unsnap pole cover as required to allow routing of cables. Cables may exit through the KO provided or through opening created in the field. Close pole cover and tighten T-Bar Bracket U Bolt.

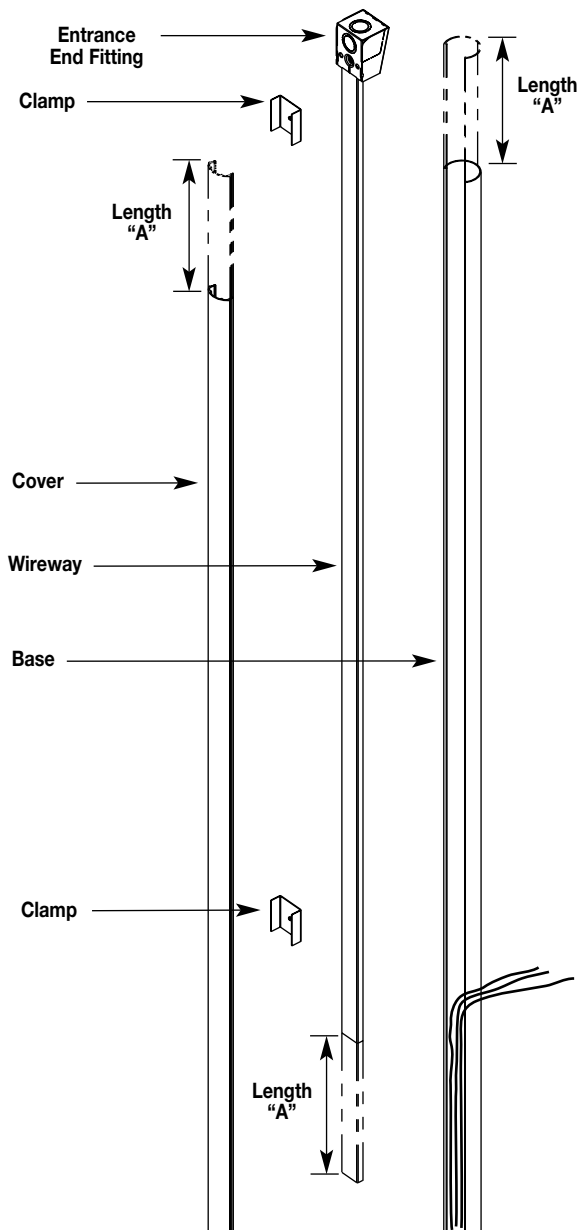
**Step 5B** Replace ceiling tile after carefully cutting a 3" [76mm] hole for pole. Install the trim plates to complete the installation.



## TO SHORTEN ALTP POWER POLE BEFORE INSTALLATION:

- Step 1** Remove cover. Remove clamps that hold in wireway. Withdraw wireway from pole – do not remove entrance end fitting.
- Step 2** Determine length “A” to be removed from pole. Fold wires back and cut length “A” from shown ends of cover, base, and wireway.
- Step 3** To re-assemble – Replace wireway into the base with conductors inside. Replace and tighten down clamps. Snap cover onto pole.

**NOTE:** *Tele-Power Pole must extend above hanger clamp with Pole stanchion resting on floor.*



### **The Wiremold Company**

U.S. and International:

60 Woodlawn Street • West Hartford, CT 06110

1-800-621-0049 • FAX 860-232-2062 • Outside U.S.: 860-233-6251

Canada:

850 Gartshore Street • Fergus, Ontario N1M 2W8

1-800-741-7957 • FAX 519-843-5980

