

Image Resource Group



Independent Companies | A Unified Resource

Single Source Engineering, Production & On-Time Delivery

- Canopies & Fascia Systems
- Tensioned Membrane Structures
- Exterior Wall Panel Systems
- Architectural Metal Roofing
- Custom Modular Buildings
- Corporate Identity Signage

Canopies / Fascia Systems / Tensioned Membrane Structures

Image Resource Group (IRG) is a leading manufacturer and installer of canopies, fascia systems, and tensioned membrane structures for the petroleum marketing, banking, transportation, governmental, recreational, and restaurant segments. Complete systems are engineered to meet architects' design specifications, corporate image standards, and building code requirements. Emphasis is always given to ensure structural integrity, aesthetics, and performance, while achieving cost savings for the end user. All IRG products are manufactured using premium quality raw materials, and state-of-the-art manufacturing methods and skilled craftsmen. Structures are



fabricated in steel and aluminum, and may be covered by a variety of metal roofing products or a complete range of fabric



Image Resource Group protective covers and tensioned membrane structures will enhance the visibility, image, identity and appeal of any location and provide shelter and security.

membranes. Fascia systems are available in aluminum composite material (ACM), powder-coated heavy 18 gauge galvanized steel, heavy gauge pre-coated aluminum, lighted fabric systems (TensionRite™), and IRG's proprietary pre-painted steel composite panels (Stratiform™) – all in a variety of colors and finishes.

Exterior Wall Panel Systems

IRG's pre-engineered exterior wall panel systems are designed to meet local building requirements and to ensure structural integrity and performance. By incorporating unique designs, using quality materials, applying current technology and manufacturing methods, and insuring superior craftsmanship, our exterior wall panel systems require low maintenance and provide a long life.

Exterior wall panel systems are available in aluminum composite material (ACM) and our proprietary precision CNC plasma cut 18 gauge galvanized steel (STEELC™). The exterior wall panels are available in a wide range of in-house custom powder coated colors and finishes.

The exterior wall panel systems are designed for fast and easy field installation over steel framing (also available from IRG) with a variety of wall compositions. Unique, integral hidden fasteners promote special detail capabilities including the



Our exterior wall panel systems are designed to meet local building requirements and to ensure structural integrity and performance. Our ability to post-finish after forming and fabricating with an environmentally sensitive process and still achieve a custom high-performance finish distinguishes us in the industry.

design flexibility to achieve bump-outs, radiused corners, and numerous other architectural details.

Architectural Metal Roofing

IRG offers complete flexibility for the architect's specific design conditions. Our Standing Seam



panels are custom designed to match your concept with a full "turn up" leg with pre-formed ribs to lock directly onto the panel system for added strength.

Product offerings include:

- 7 Fas-Lock™ Standing Seam profile selections including a UL 90 tested system
- 6 Fas-Lock™ Batten Seam profile selections of various width battens
- 8 Distinct profiles for wall, fascia and soffit panels with both concave and convex curved panel systems available. IRG's (15) standard finishes are KYNAR 500® 70% resins warranted for 20 years. Other finish systems are available on a design-specific basis.



IRG designed systems provide a finished look with no exposed fasteners, uniform and virtually flat pans, concealed clips that allow for thermal movement and simple installation.



Custom Modular Buildings

At IRG, our modular buildings are designed not only to be aesthetically pleasing, but also to have the strength and mobility to be shipped and relocated as needed. Only high-strength steel with bolted and welded connections are used for durability and longevity.

Our buildings can be ordered with floors, restrooms, coolers, cabinets, HVAC, cash drawers, glazing, and any number of exterior finishes. Various levels of



bullet resistive construction are also available.

IRG handles the state certification required in many locales to insure local and federal regulation compliance.



IRG modular buildings combine durability and longevity with good looks and a full list of optional features that will meet the demands of any commercial or institutional need.

Reduce your job completion time by ordering your custom modular building from IRG.

Corporate Identity Signage



Enhance your reimagining program with IRG's leading edge technology, expert visualization tools and ongoing image maintenance services. Image Resource Group is your complete corporate signage resource.

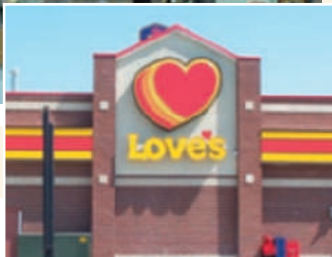


Image Resource Group provides comprehensive corporate sign services from concept to completion. From image design, manufacturing and installation to maintenance of corporate identity program – IRG is your one-stop corporate sign resource.

Our graphic design group can utilize our proprietary 'Photo-realization' process which allows the corporate client to see what the completed project will look like early in the concept stage of the design process. Photorealization has the added value of providing precise presentation materials when seeking sign permits.

IRG's field staff provides accurate on-site surveys for re-imaging programs, eliminating costly delays before they occur while assuring a high quality installation.

IRG's manufacturing facilities utilize leading-edge technology with computer vinyl cutting equipment, 60 inch large format digital printing capabilities, high-definition plasma cutting and custom powder coating. Custom manufactured Underwriter's Laboratories approved light fixtures are available for those clients wanting the extra impact of internally illuminated signage.

With IRG's exclusive *TensionRite*™ flexible face product, seamless illuminated signs and fascia as large as 7' x 300' can be provided. Our exclusive *EEP*™ (Energy Efficiency Program) guarantees the brightest illumination at the absolute lowest cost.

Finally, when your project is complete, IRG offers ongoing image maintenance services to keep your installation looking great.

Image Resource Group

**Six Independent Companies –
A Single Resource**



The six independent member companies that comprise the Image Resource Group, **Fashion Inc, Steeltec, Ventaire LLC, Sagebrush Building Systems, Inc., VFS and Universal Sign & Display LLC** are affiliated through common ownership. The IRG companies provide you with a unique opportunity to provide competitive bidding combined with the ease of a single source provider.

With over 300,000 square feet in four manufacturing plants in Kansas, Oklahoma, Ohio and Georgia, IRG's 180+ employees include on-staff engineers with engineering seals in more than 40 states. Rely on IRG to support your efforts to deliver excellent design on budget and on-time.

Visit us online at: www.irgrp.com

**to search and download specifications
and drawings
directly to your
documents
and
proposals.**



Image Resource Group

Toll-Free: (800) 847-0811

E-mail: sales@irgrp.com

Web site: <http://www.irgrp.com>