

SUNSHADE CATALOG 2009



**OGI Architectural Metal Solutions**

an Ohio Gratings company





**Corporate Headquarters** - Operating in accordance with NAAMM standards, Ohio Gratings, Inc. began operations in Canton, Ohio in 1970 and expanded from 8,000 square feet to our current facility (shown here) of over 312,000 sq.ft.



## SUNSHADES

In 2003, **Ohio Gratings, Inc.** (OGi) began selling our traditional products into the architectural markets for vertical applications such as sunscreens, grilles, building facades, handrail infill, fencing and louvers. In order to focus more attention on this market, OGi Architectural Metal Solutions was created.

Custom fabrication and special finishes for these product types and these operations are handled separately from our normal production for quality control purposes. Typical finishes include powder coating, anodizing and *Kynar* painting.

OGi's home headquarters in Canton, Ohio has a manufacturing facility of over 312,000 sq. ft. Our facilities also provide services from turn-key systems to the most complex fabricating requests. We operate in accordance to ANSI (American National Standards Institute) and NAAMM (National Association of Architectural Metal Manufacturers) standards.

A joint venture was also formed in 2007 with **American Metalco** LLC (AMCO) in Florida to take advantage of the tremendous growth potential of these products in the southeastern U.S. market. AMCO offers design, engineering, fabrication and installation from their 30,000 sq. ft. facility in Longwood, Florida. OGi supports their operation by handling the majority of their manufacturing requirements.



**American Metalco...** located in Longwood, FL operates from a 30,000 sq. ft. facility. With their experience in design, planning, engineering, fabrication, project management and installation services, they have worked on many different projects in the South Florida market & bring that knowledge to the OGi team.

**American Metalco...** provides architectural systems for screening, grilles, louvers, cladding, awnings, canopies, sunshades, metal fencing, walkways and signature structures.



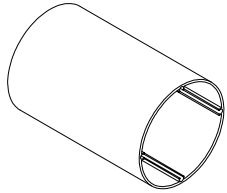




# SUNSHADES

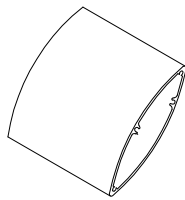
System Components .....	4-7
Blades, Screens, Fascia .....	4
Outriggers, Brackets .....	5
Perforated Metals, Finishes .....	6
Mounting Systems.....	7
Sunshade Applications .....	8-11
<i>BarScreen</i> .....	8-9
<i>VisiScreen</i> .....	10
Perforated / Airfoils.....	11

## BLADES



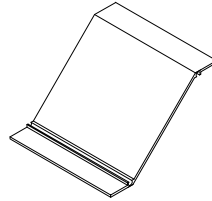
### Round

Sizes: 1", 2", 3", 4"  
Maximum Length: 12'



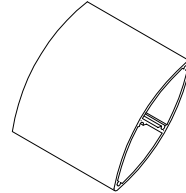
### Airfoil

Sizes: 4", 6", 8"  
Maximum Length: 12'



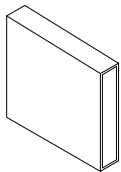
### Z-Blade

Sizes: 4", 6"  
Maximum Length: 12'



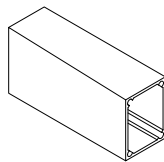
### Longspan Airfoil

Sizes: 4", 6", 8"  
Maximum Length: 16'



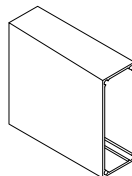
### Flat

Sizes: 1/2" x 1" - 4"  
Maximum Length: 12'



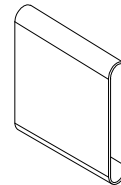
### Square

Sizes: 2" - 8"  
Maximum Length: 12'



### Rectangular

Sizes: 1", 4" x 2" - 8"  
Maximum Length: 12'



### Shutter

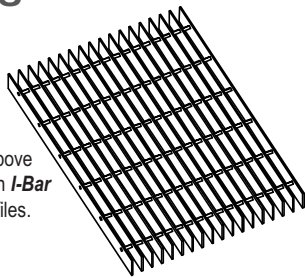
Sizes: 1/2" x 1" - 4"  
Maximum Length: 12'

## SCREENS

### 16 BarScreen

Solar Block up to 66° above horizon. Also available in *I-Bar* and *LiteBarScreen* profiles.

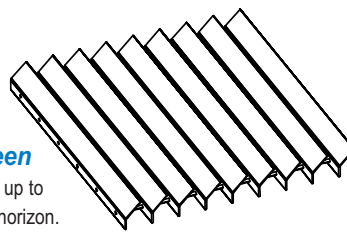
- ▶ up to 4' Width
- ▶ up to 12' Length



### VisiScreen

Solar Block up to 66° above horizon.

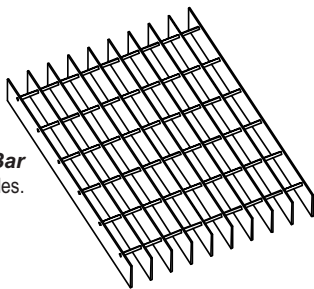
- ▶ up to 4' Width
- ▶ up to 12' Length



### 32 BarScreen

Solar Block up to 58° above horizon. Also available in *I-Bar* and *LiteBarScreen* profiles.

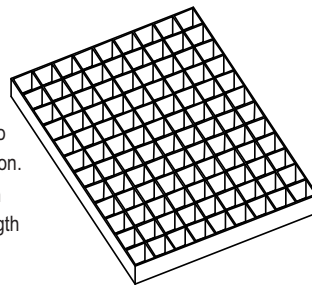
- ▶ up to 4' Width
- ▶ up to 12' Length



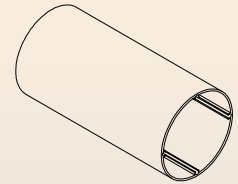
### Egg-Crate

Solar Block up to 62° above horizon.

- ▶ up to 4' Width
- ▶ up to 12' Length

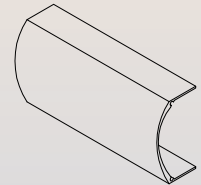


## FASCIA



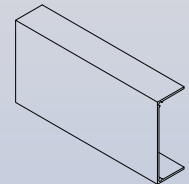
### Round Tube

Sizes: 3" - 6"  
Maximum Length: 12'



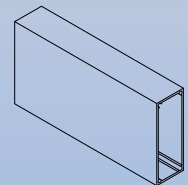
### Bullnose

Sizes: 4" & 6"  
Maximum Length: 12'



### Channel

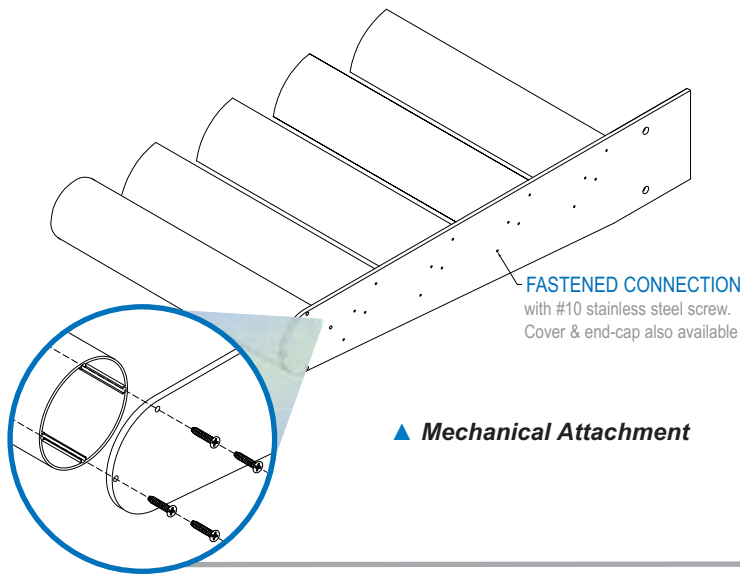
Sizes: 4" & 6"  
Maximum Length: 12'



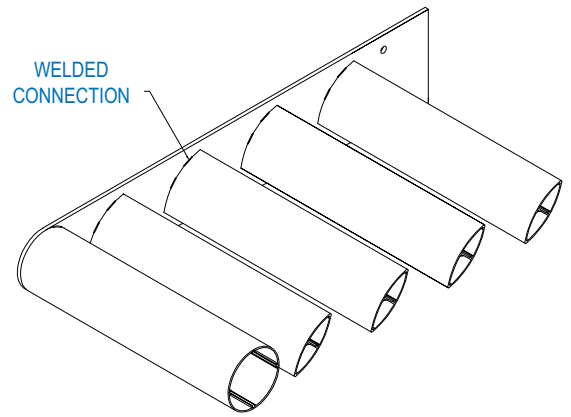
### Rectangular Tube

Sizes: 1" x 4" & 2" x 6"  
Maximum Length: 12'



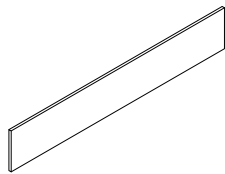


▲ Mechanical Attachment

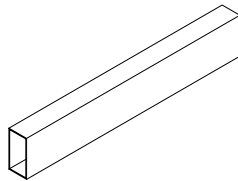


▲ Welded Attachment

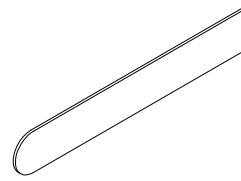
OUTRIGGERS



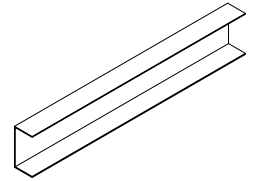
Rectangular Plate



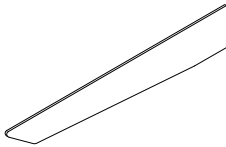
Rectangular Tube



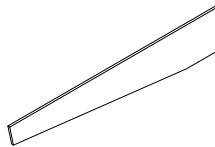
Round Plate



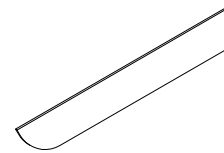
Channel



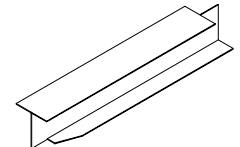
Tapered Plate



Angular Plate

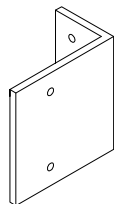


Half Round Plate

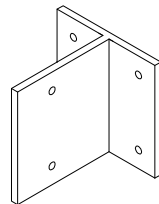


Flat Iron

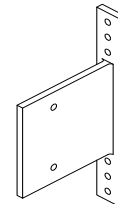
BRACKETS



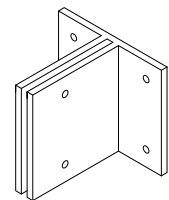
End Line



In-Line Wall



Curtain Wall

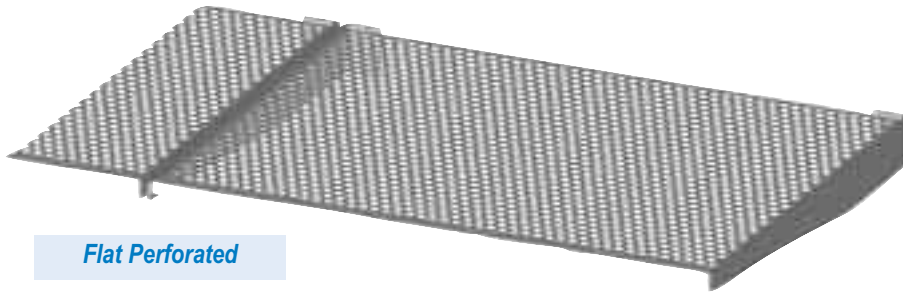


In-Line Sleeve

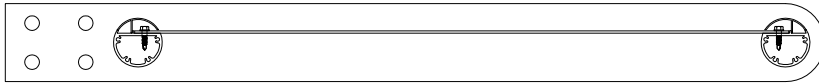




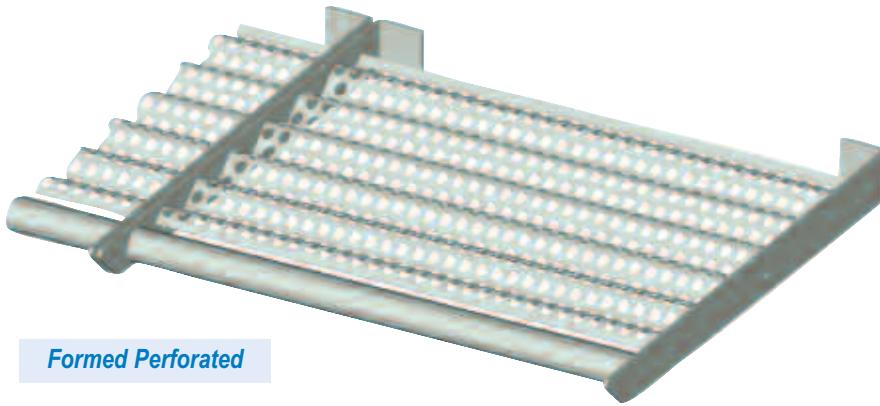
## PERFORATED



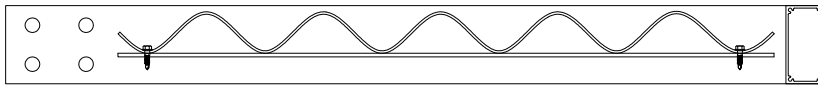
**Flat Perforated**



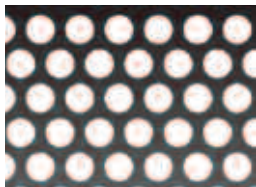
**Flat Sheet with Integrated Trim ▲**



**Formed Perforated**

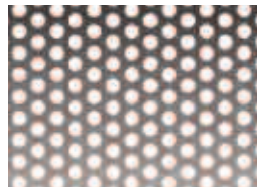


**Formed Sheet with Mounting Shelf ▲**



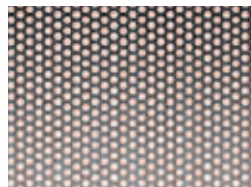
**50-1116-RD**

- ▶ 1/2" Round
- ▶ 47% Open Area



**25-38-RD**

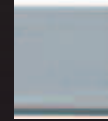
- ▶ 1/4" Round
- ▶ 40% Open Area



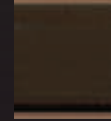
**125-316-RD**

- ▶ 1/8" Round
- ▶ 40% Open Area

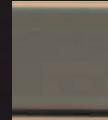
## ANODIZED FINISHES



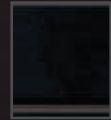
Clear



Med. Bronze



Champagne



Black

## PAINT COLORS



**Sage**  
(RAL 6013)



**Green**  
(RAL 6002)



**Blue**  
(RAL 5007)



**Red**  
(RAL 3016)



**Black**  
(RAL 8022)



**Gray**  
(RAL 7015)



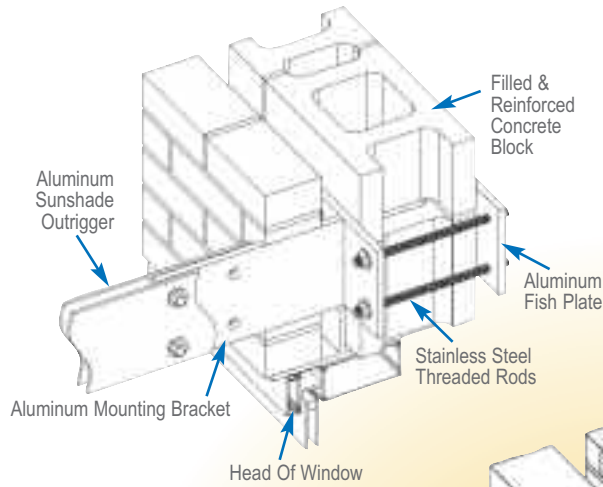
**Almond**  
(RAL 8000)



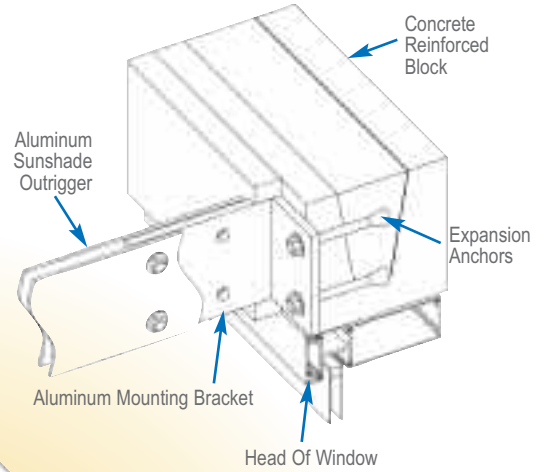
**White**  
(RAL 9016)

OGi also offers over 300 RAL, Newlar / Kynar / Durnar & powder paints. Contact OGi for additional information.

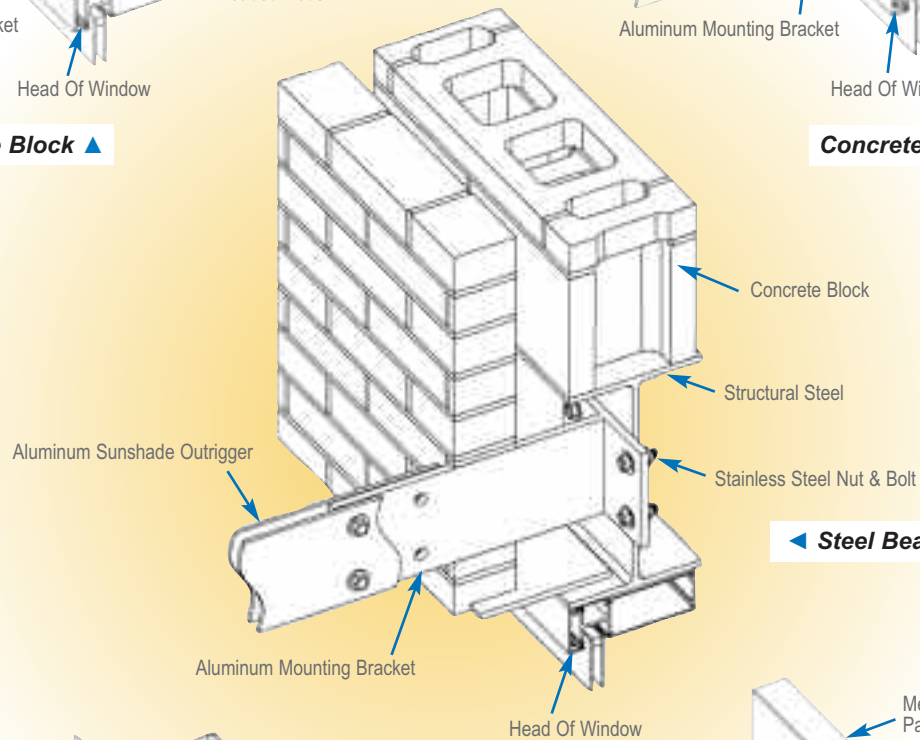




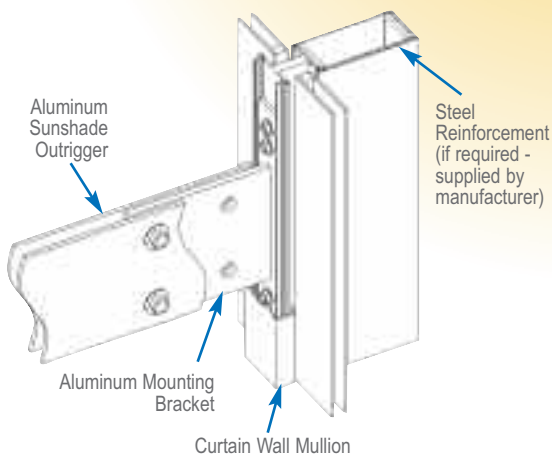
**Concrete Block ▲**



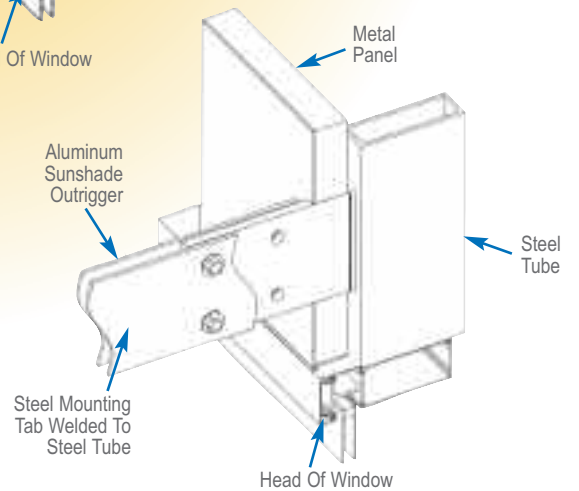
**Concrete Lintel ▲**



**Steel Beam**



**Mechanical - Curtain Wall ▲**



**Welded - Curtain Wall ▲**







**OGi BarScreen sunshade systems can offer up to 100% solar block at any sun angle.**

Our **BarScreen** products are light weight and have a wide variety of bar spacing and size options. **BarScreen** is available in aluminum and light gauge steel. Aluminum bars are also available in select styles with a **LiteBar** option to further reduce the weight of your sunshade.

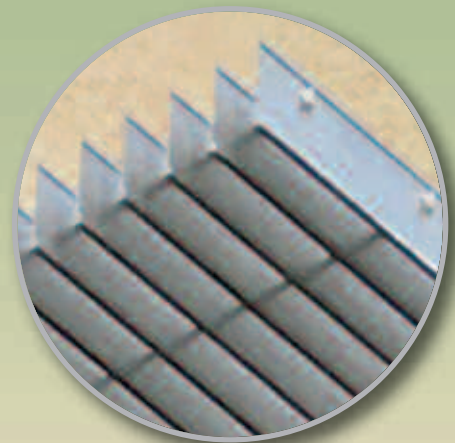
All **BarScreen** products easily adapt into OGi sunshade accessory components creating an interchangeable kit of parts to play with when creating the ideal sunshade for your building project. **BarScreen** and **BarScreen-Lite** offer the same solar block attributes while giving a slightly different look and offering alternatives on the product weight.



▲ **Visitors Park Kiosk**  
- 38 **BarScreen**  
- Baltimore, MD

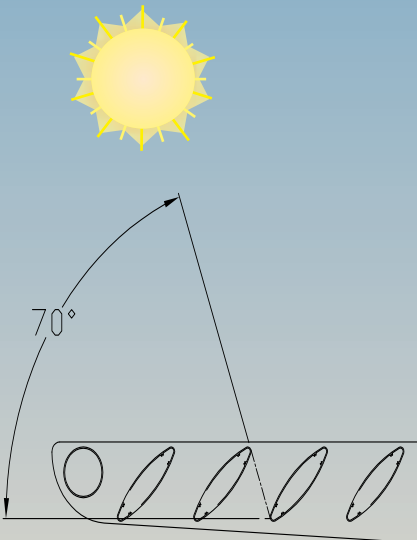


▲ **Arundel Mills Building**  
- 19 **BarScreen Lite**  
- Baltimore, MD



▲ **Detail - BarScreen Lite**





Diag. 9.1 Degrees Above Horizon

**With a diverse mix of mesh openings and profiles to choose from**

...OGi **BarScreen** sunshade systems can meet any shading design criteria necessary while providing an attractive and contemporary product. Bar spacing, depth and profiles may be varied to produce any level of shading desired. Most sunshade applications are designed around a sun angle of 70° above horizon (diagram 9.1).

With a manufactured **BarScreen** sunshade infill as a part of your sunshade system you will have the most economical product to complete your building design.

▲ **Mesa Community College**  
 - 1" x 4" **Egg-Crate**  
 - Mesa, AZ



▲ **Wildlife Education Headquarters**  
 - 19 **BarScreen Lite**  
 - Raleigh, NC







**Belisle Building ▲**  
- **VisiScreen**  
- Bethesda, MD

## OGi sunshades offer a lightweight system with up to 100% solar block!

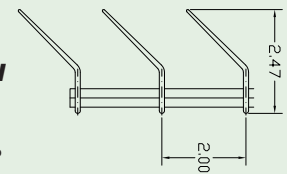
**VisiScreen**, an extruded fixed aluminum louver, is an excellent product for sunshade applications. The extruded fin at a 45° angle helps to block more solar heat gain with less weight. **VisiScreen** also offers an appearance somewhere between **BarScreen** and airfoils typically seen in sunshade applications.

Like **BarScreen**, **VisiScreen** has a great deal of flexibility in bar spacing and easily integrates into all OGi sunshade parts. Because of the louver design, it is capable of spans up to 12'. Consult your manufacturer's representative for more detailed information.

**▲ 540 W. Union Street Bldg.**  
- **VisiScreen**  
- Athens, OH

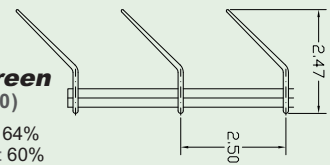
### **VisiShield** (LG-75)

Open Area: 64%  
Visual Block: 75%



### **VisiScreen** (LG-60)

Open Area: 64%  
Visual Block: 60%



## Load Tables

PRODUCT	SIZE	WEIGHT (LBS./SQ.FT.)	SEC. PROP / FT. WIDTH SX, IN <sup>3</sup> LX, IN <sup>4</sup>	CLEAR SPAN								
				5'- 0"	6'- 0"	7'- 0"	8'- 0"	9'- 0"	10'- 0"	11'- 0"	12'- 0"	
<b>VisiShield</b>	LG-75	2.81	.773	U	247	172	180	97	76	62	51	43
			.953	D	.365	.526	1.020	.934	1.183	1.460	1.767	2.102
<b>VisiScreen</b>	LG-60	2.35	.626	U	200	139	102	78	62	50	41	35
			.773	D	.364	.525	.714	.933	1.181	1.458	1.764	2.099

**U** = Safe uniform load in lbs./sq.ft **D** = Deflection inches

**NOTE:** Load and deflections given in this table are theoretical and are based on a unit stress of 12,000 psi.







**OGi offers perforated metal & extruded aluminum blades specifically designed for sunshade applications.**

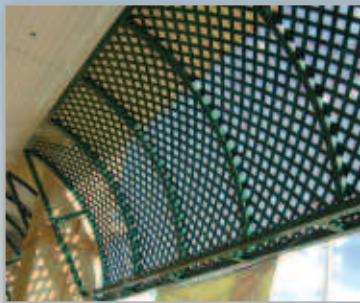
▲ **1060 Brickell**  
- **Perforated 50-1116-RD**  
- Miami, FL

Perforated aluminum is an affordable and lightweight design option for producing a sunshade. With some creativity, a design can easily be custom made for your application without drastically increasing the cost.

OGi extruded aluminum airfoils and other profiles are available in a variety of sizes and are designed to integrate into the OGi sunshade assemblies. Airfoils, in addition to being durable, offer a contemporary appearance. Your airfoil, and any other assembly, can be completed by adding an anodized finish or high performance liquid resin / polyester powder coat paint.



▲ **Stetson University**  
- **OGi Foil 6**  
- DeLand, FL



▲ **Publix Grocery Store**  
- **Perforated Lattice**  
- Fort Myers, FL



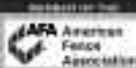


ARCHITECTURAL METAL SOLUTIONS

...UNLIMITED POSSIBILITIES



**OGI Architectural Metal Solutions**  
an Ohio Gratings company



[www.ohiogratings.com](http://www.ohiogratings.com) ▲ 1-800-321-9800

5299 Southway Street SW ▲ Canton, OH 44706 ▲ Fax: 330-477-7872

Printed 7/09 - PPI

