

ARCHITECTURAL CATALOG



OGI Architectural Metal Solutions

an Ohio Gratings company

TABLE OF CONTENTS

A B O U T U S

Louvers 3-5

Grilles 6-8

Fencing 9-11

Handrails 12-13

Sunshades 14-15

ADA Compliant 16-17

Parks & Recreation 18-19



Canton, Ohio - Operating in accordance with NAAMM standards, Ohio Gratings, Inc. began operations in Canton, Ohio in 1970 and expanded from 8,000 square feet to our current facility (shown here) of over 312,000 sq.ft.

Ohio Gratings, Inc. has been manufacturing aluminum, carbon and stainless steel bar grating for over 38 years . . .

Our products have been used in all types of industrial, environmental and commercial applications wherever an open walkway was required. Over the last several years architectural firms have become intrigued with our different metal products using them more and more in decorative and functional applications to enhance their designs.

As a result **Ohio Gratings, Inc. (OGi)** began selling our traditional products into the architectural markets for vertical applications such as sunscreens, grilles, building facades, handrail infill, fencing and louvers. In order to focus more attention on this market, **OGi Architectural Metal Solutions** was formed in 2007. Custom fabrication and special finishes are typical in this market and these operations are handled separately from our normal production for quality control purposes. Typical finishes include powder coating, anodizing and **Kynar** painting.

A joint venture was also formed in 2007 with American Metalco LLC in Florida to take advantage of the tremendous growth of these products in that market. Our joint venture partner offers design, engineering, fabrication and installation experience and operate from a 30,000 square foot facility in **Longwood, FL**. OGi supports their operation by handling the majority of their manufacturing requirements.

OGi headquarters has a manufacturing facility of over 312,000 sq. ft. in Canton. We also have additional facilities located in **Ridgeland, SC, Houston, TX, and Lindon, UT** that offer a vast selection of grating products and services including an inventory of light duty steel and aluminum. Our facilities also provide services from **turn-key** systems to the most complex fabricating requests. We operate in accordance to **ANSI** (American National Standards Institute) and **NAAMM** (National Association of Architectural Metal Manufacturers) standards.



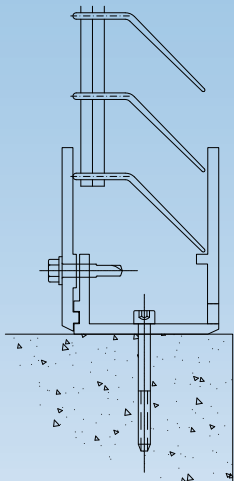
American Metalco... located in Longwood, FL operates from a 30,000 sq. ft. facility. With their experience in design, planning, engineering, fabrication, project management and installation services, they have worked on many different projects in the South Florida market and bring that knowledge to the OGi team.

American Metalco... provides architectural systems for screening, grilles, louvers, cladding, awnings, canopies, sunshades, metal fencing, walkways and signature structures.





Metropolis Parking Garage ▲
- Miami, FL



VisiBlock LG-100
(with integrated aluminum frame)

Aluminum louvers are not only functional ...but they look good too!

OGi **LG-Louver Series** products are manufactured from aluminum extrusions and are available in various finishes to enhance the overall appearance. They can offer total or partial visual concealment while allowing a minimum of 63% open air flow. They come with a two-piece integrated aluminum frame to complete your system.

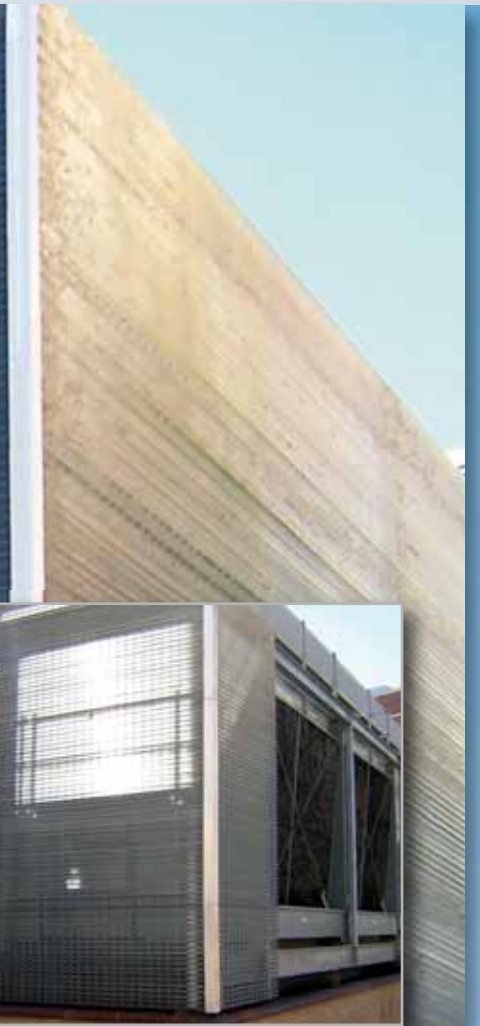
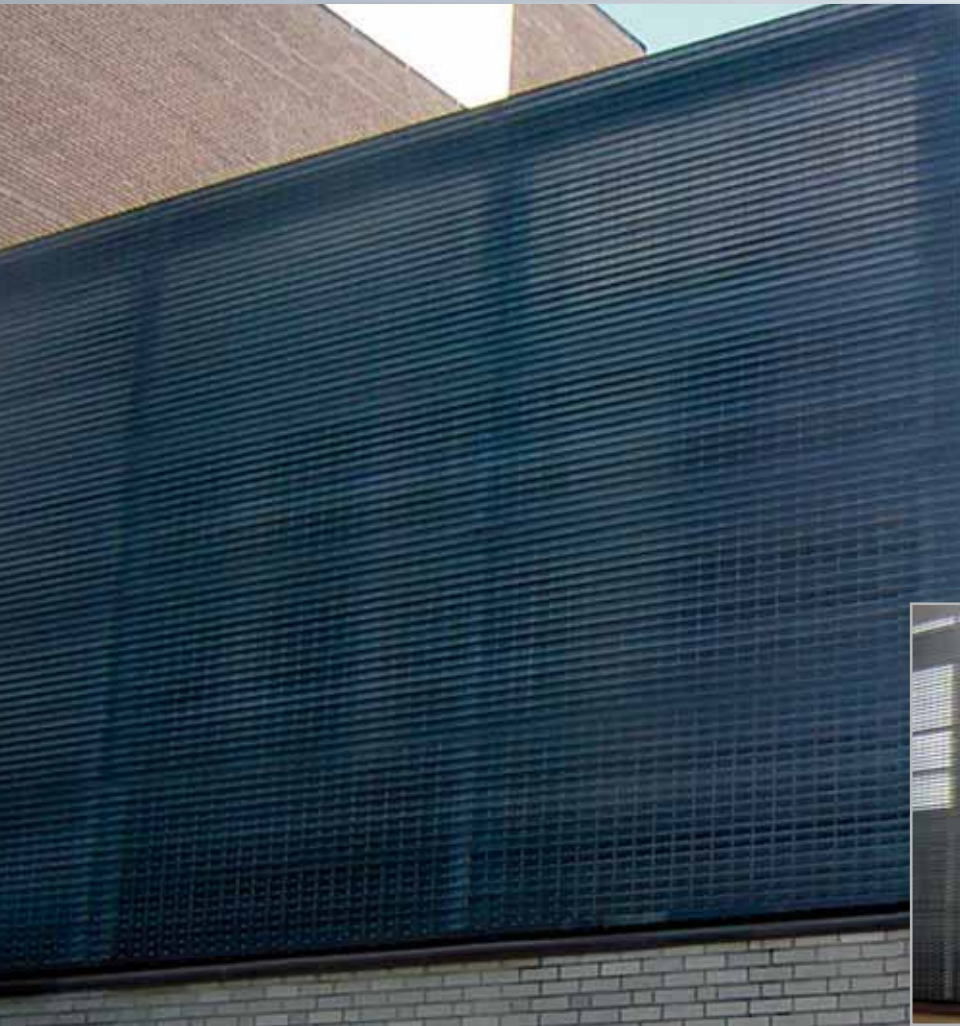
Our **LG-Louver Series** products are ideal for visual barriers requiring open airflow and enhanced security. They offer a range of other benefits that include:

- Minimal Maintenance
- Reasonable Cost
- Easy Installation
- Field Adaptability



▲ VisiBlock Concealment Louver
- Detroit, MI





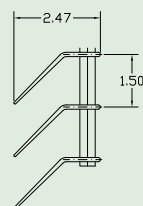
▲ PTRP Biotech Mechanical Screen
- Winston Salem, NC

Load Tables

PRODUCT	SIZE	WEIGHT (LBS./SQ.FT.)	SEC. PROP / FT. WIDTH SX, IN ³ LX, IN ⁴	CLEAR SPAN								
				5' - 0"	6' - 0"	7' - 0"	8' - 0"	9' - 0"	10' - 0"	11' - 0"	12' - 0"	
VisiBlock	LG-100	3.57	1.017	U	325	226	166	127	100	81	67	57
			1.254	D	.365	.526	.715	.934	1.182	1.460	1.766	2.102
VisiShield	LG-75	2.81	.773	U	247	172	180	97	76	62	51	43
			.953	D	.365	.526	1.020	.934	1.183	1.460	1.767	2.102
VisiScreen	LG-60	2.35	.626	U	200	139	102	78	62	50	41	35
			.773	D	.364	.525	.714	.933	1.181	1.458	1.764	2.099

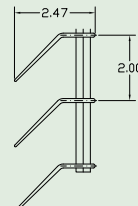
U = Safe uniform load in lbs./sq.ft. D = Deflection inches

NOTE: Load and deflections given in this table are theoretical and are based on a unit stress of 12,000 psi.



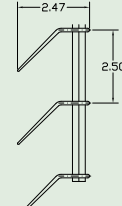
VisiBlock
LG-100

Open Area: 63%
Visual Block: 100%



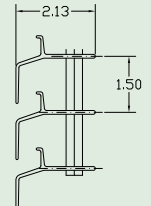
VisiShield
LG-75

Open Area: 64%
Visual Block: 75%



VisiScreen
LG-60

Open Area: 64%
Visual Block: 60%



StormGuard
ZG-100

Rain Resistant
Visual Block: 100%



OGI Architectural Metal Solutions
an Ohio Gratings company

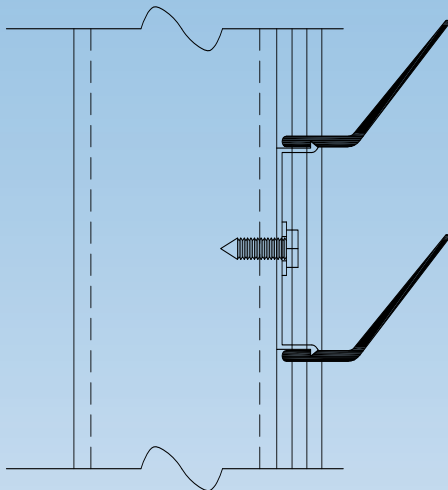


▲ *Leon Medical Vertical Sunscreen*
- Miami, FL

As an extruded aluminum product, it's **lightweight and naturally resistant to corrosion.**

It is an ideal product for both harsh tropical and wintry environments.

We have just begun to scratch the surface of the **LG-Louver Series** products' potential uses. All of our louver products come with the necessary technical support, value engineering and can be easily customized to meet your particular specifications.



VisiScreen LG-60 ▲
(with integrated mounting clip)



▲ *Leon Medical Center*
- Interior Detail





▲ **Woodward Parking Garage Grille**
- Detroit, MI (4 x 12 infill)

OGi aluminum **Egg-Crate** grilles are exceptionally versatile
...and affordable!

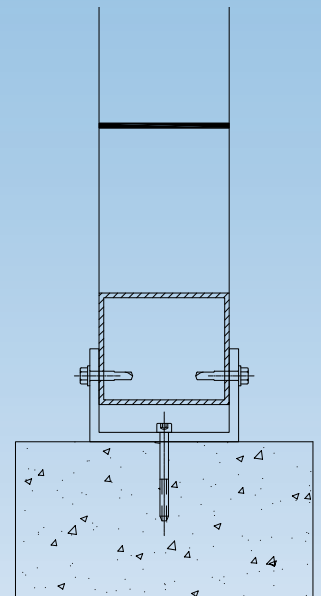
They are manufactured from both naturally attractive aluminum extrusions and cold formed carbon steel. With a wide variety of mesh openings; wind, snow and water pass through with ease, substantially reducing wind and snow loading concerns.

Grilles are ideally suited for exterior applications where security and privacy are paramount.

The open mesh grilles allow for ample natural ventilation, day lighting and site lines in and out.

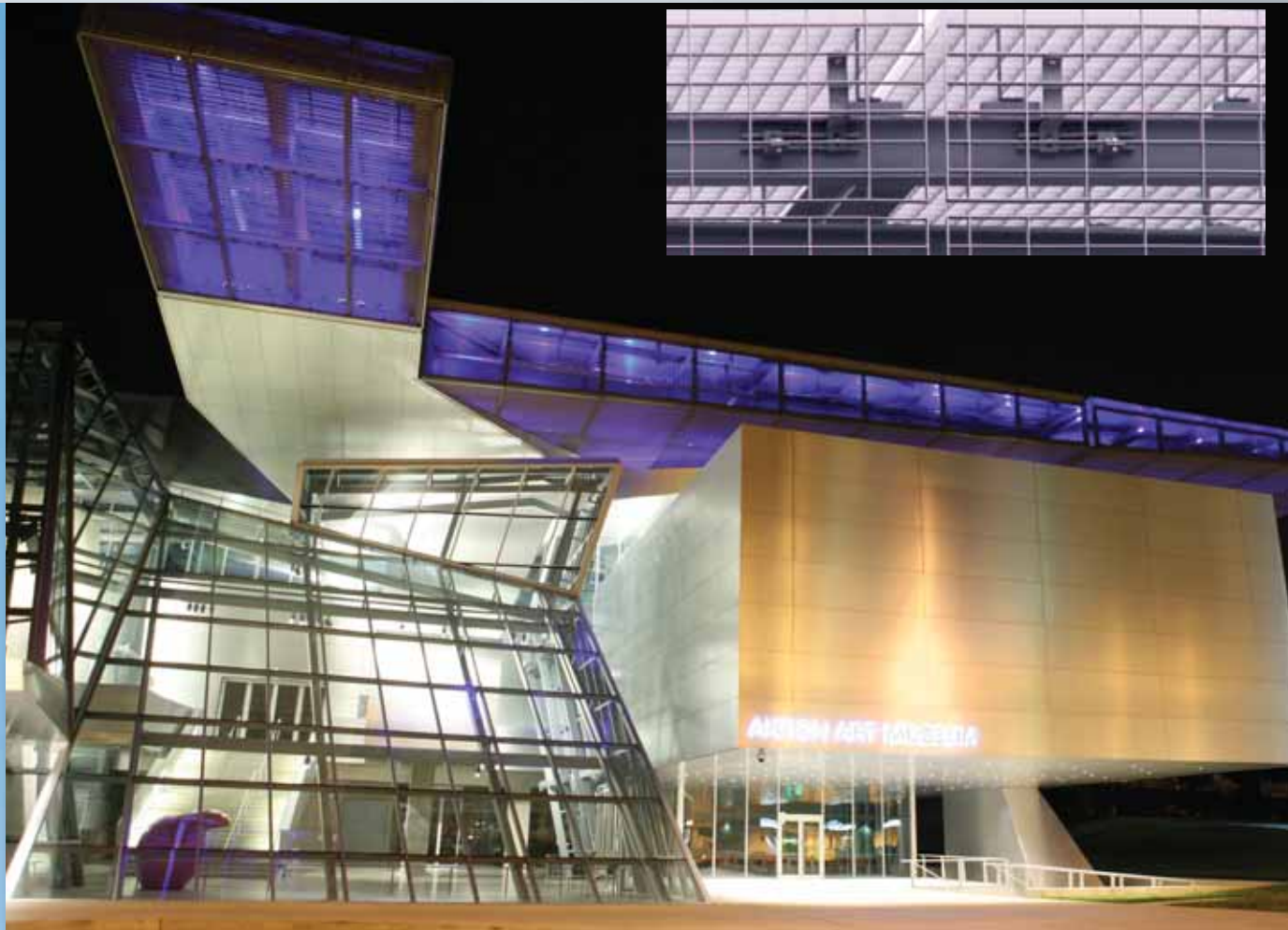


▲ **Woodward Parking Garage**
(typical 4 x 12 infill detail)



▲ **Aluminum Egg-Crate Grille**
(anchoring system detail)





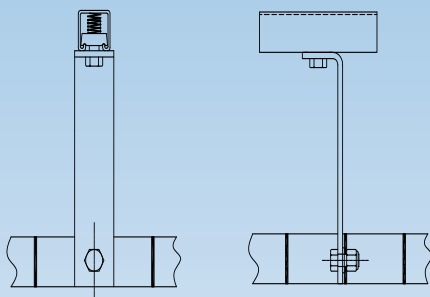
Akron Art Museum Grille ▲
 (3 x 6 Egg-Crate) - Akron, OH

**OGi aluminum grilles are an excellent choice
 ...for “Green” applications.**

They help reduce interior heat gain and reduce solar glare for a more comfortable occupiable space.

In cold environments, the open design of screens will minimize excessive “snow loading” issues.

Grilles provide aesthetically pleasing style to any building exterior while serving fundamentally important functions such as security and shading.



Mounting Detail ▲
 (3 x 6 Egg-Crate & Unistrut)



▲ Egg-Crate
 (3 x 6 detail)





With OGi grilles ...the sky is the limit!

They are just the thing for a wide variety of applications where aesthetics and security are the primary concerns. Our grilles offer a range of other benefits that include:

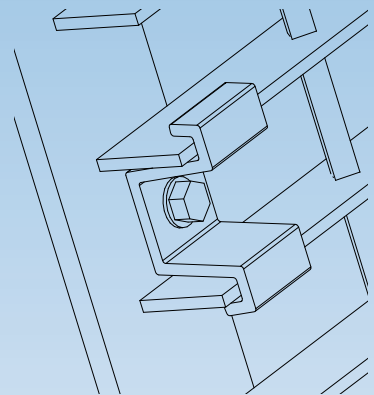
- Reasonable Cost
- Easy Installation
- Field Adaptability
- Minimal Maintenance
- Lightweight yet Strong

This is only the beginning of the potential of OGi grille products. All of them come with the necessary technical support, value engineering and can be easily customized to meet your particular project budget and specifications.



Artech VisiScreen ▲
(LG-60) - Miami, FL

▲ **Minneapolis Community Technical College**
- Minneapolis, MN



▲ **3D Saddle Clip**
(anchoring detail)



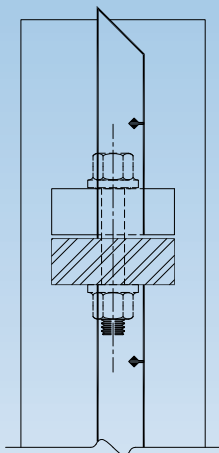


▲ *MSP International Airport*
- Minneapolis / St. Paul, MN

**OGi fencing offers a secure perimeter structure
...with the look of an ornamental fence!**

Our fencing products are manufactured from both naturally attractive aluminum extrusions and cold formed carbon steel. With a wide variety of mesh openings our fence systems can meet your highest level of security needs or create a decorative metal screen.

Aluminum fencing is not only secure but a superior product for long term durability. With a variety of systems to choose from, OGi also offers custom fabrication and the technical support to meet all your individual specifications.



15-SGF-4 ▲
(fence detail)



▲ *MSP International Airport (Gate)*
- Minneapolis / St. Paul, MN





**Carbon steel fencing is a superior system
...when security is your primary concern.**

With a hot-dip galvanized base and powder coated finish, your carbon steel fence system will provide you with the long term durability you need. Steel fencing is available in a wide variety of mesh openings as well as gauge thicknesses allowing OGi to value engineer a specific system that will meet your exact specification needs.

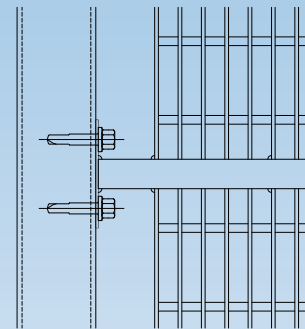
OGi fencing products are ideal for a wide variety of applications where aesthetics and security are the primary concerns. Our fencing systems offer a range of other benefits like:

- Reasonable Cost
- Easy Installation
- Custom Fabrication
- Minimal Maintenance
- Lightweight yet Strong



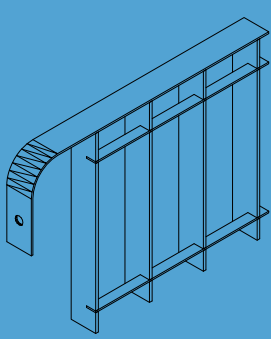
MBG Maintenance Fence ▲
- Canton, OH

▲ Virginia Tech. Physics Bldg.
- Blacksburg, VA



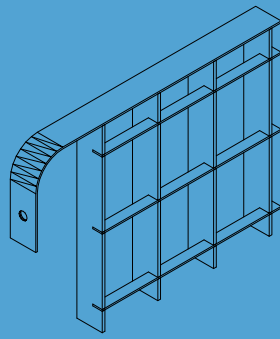
▲ 19-W-4
(fence detail)





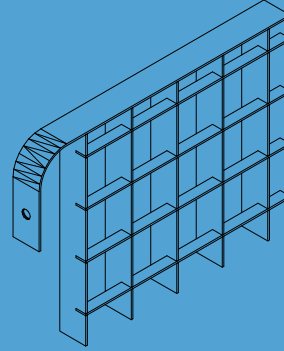
Urban

Opening: 2-3/8" x 5-1/4"
Bar Size: 1" x 12 gauge (.1046")



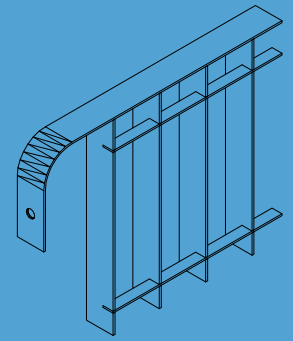
Guardian

Opening: 2-3/16" x 2-5/8"
Bar Size: 1" x 12 gauge (.1046")



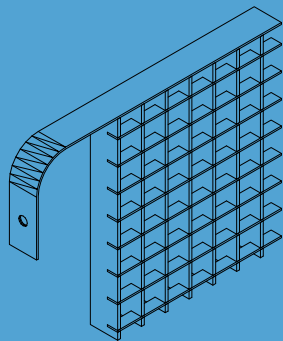
Perimeter

Opening: 1-3/4" x 1-3/4"
Bar Size: 1" x 14 gauge (.0747")



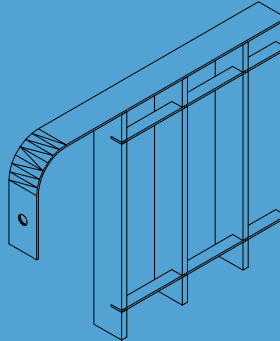
Palladium

Opening: 1-3/4" x 5-1/4"
Bar Size: 1" x 14 gauge (.0747")



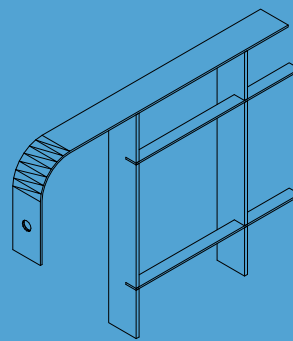
Screen

Opening: 7/8" x 7/8"
Bar Size: 1" x 12 gauge (.1046")



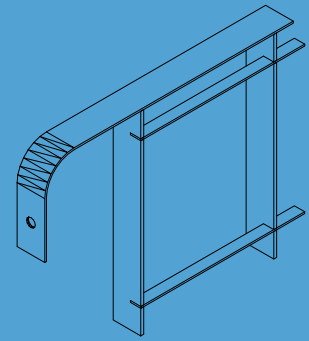
SafeGuard

Opening: 2-3/16" x 5-1/4"
Bar Size: 3/16" x 3/16" gauge (.0747")



Modular

Opening: 3-15/16" x 3-15/16"
Bar Size: 1" x 12 gauge (.1046")



Tuscan

Opening: 4-13/16" x 5-1/4"
Bar Size: 1" x 12 gauge (.1046")

We're proud to offer our **NEW** architectural **PressLock** steel fence ...

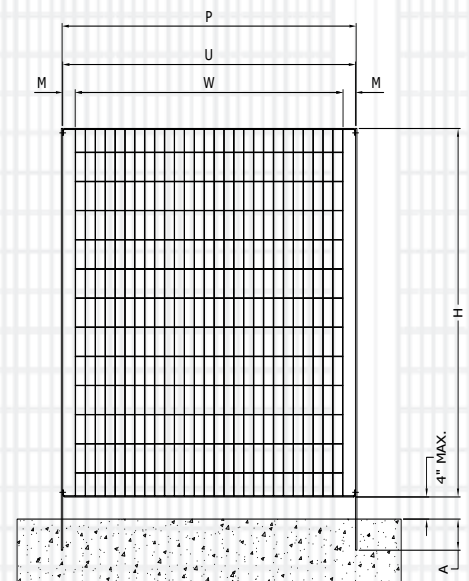
which is ideal for multiple uses where aesthetics and strength need to co-exist.

Ogi can custom manufacture and fabricate most mesh sizes or panel configurations required.

Contact our sales team for assistance at 800-321-9800. Refer to the chart below for more specific information on how to specify what you need.

How to Specify...

Post Size	"H" Panel Height	"A" Anchorage Length	"P" Post Centers	"U" Unit Width	"W" Grille Width	"M" Mounting Projection
2-1/2" x 5/16"	36"	8"	52-5/16"	52"	48"	2"
2-1/2" x 5/16"	48"	8"	64-5/16"	64"	60"	2"
2-1/2" x 5/16"	60"	10"				
2-1/2" x 5/16"	72"	12"				
2-1/2" x 5/16"	96"	14"				





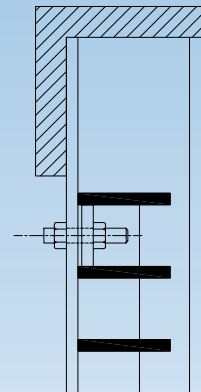
BYU Student Athletic Center ▲
- Provo, UT

OGi handrails offer an open - yet secure - panel infill...at a very affordable price!

Our handrail products are manufactured from both naturally attractive aluminum extrusions and cold formed carbon steel for extra strength and longevity. With a wide variety of mesh openings, our handrail systems can meet any loading criteria yet provide an attractive and contemporary product.



BYU Strength Training Room ▲
- Provo, UT



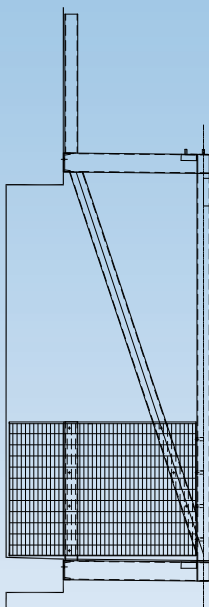
▲ 19-ADT-4
(handrail detail)



OGi Architectural Metal Solutions
an Ohio Gratings company



1401 S. State Street Balcony Handrail ▲
- Chicago, IL



PressLock Handrail ▲
(detail with structural steel frame)

With a variety of mesh openings and fabrication options to choose from, OGi handrail systems can stand alone ...or easily integrate into your specific application.

Our lightweight aluminum and thin gauge steel rail infill systems will provide you with a customized look at an affordable price.

OGi handrail products are ideal for a wide variety of applications where aesthetics and security are the primary concerns. Our handrail systems offer a range of other benefits which include:

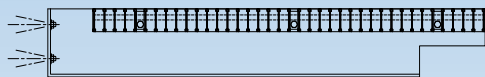
- Reasonable Cost
- Easy Installation
- Custom Fabrication
- Minimal Maintenance
- Lightweight yet Strong



▲ Holsinger Apts. (Balcony Handrail)
- Charlottesville, VA



OGi Architectural Metal Solutions
an Ohio Gratings company



▲ **Detail Flat-Iron**
Arundel Mills - Baltimore, MD

Arundel Mills Building ▲
19-SGLi-4x2 Flat-Iron
- Baltimore, MD

**OGi sunshades offer lightweight systems
... with up to 100% solar block!**

Our sunshade products are manufactured from both naturally attractive aluminum extrusions and thin gauge cold formed carbon steel. With a diverse mix of mesh openings and profiles to choose from OGi sunshade systems can meet any solar loading criteria necessary while providing an attractive and contemporary system.

Blade spacing and profile may be varied to produce a wide array of light levels and shading. Select blade profile, outrigger and fascia designs from this catalog or integrate custom components.

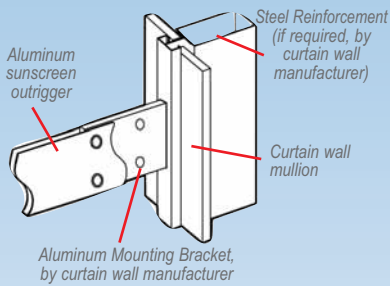


Visitors Park Kiosk ▲
- Baltimore, MD



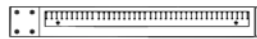


NC Wildlife Education Headquarters ▲
- Raleigh, NC



3D Curtain wall Attachment ▲
- Detail

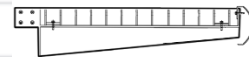
Other Outrigger and Nosing Configurations*...



MODULAR - SQUARE NOSE



TAPERED - ROUND NOSE



ANGLED - BULL NOSE

* system components are easily interchangeable



▲ Leon Medical Center
- Miami, FL





**OGi walking surfaces offer open flooring systems
...that meet ADA and high heel safety needs!**



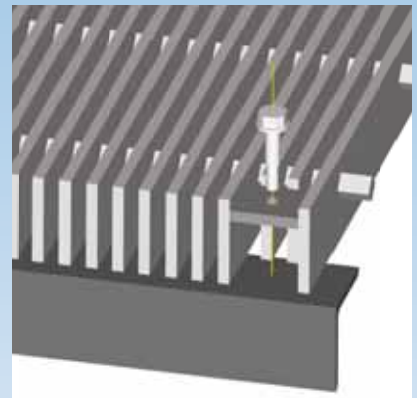
Our ADA products are manufactured from naturally attractive aluminum extrusions, cold formed carbon steel and stainless steel. OGi products conform to the spacing requirements of the *ADA Accessibility Guidelines for Buildings and Facilities*. The specification and use of this family of **GRATER ACCESS®** products will ensure that your project is both pedestrian friendly and vehicle safe.

Since these Accessibility Guidelines are subject to change, please contact OGi for up-to-date information regarding the use of grating in ADA applications.



Pedestrian Bridge ▲
(7-SGi-4) Corning, NY

▲ BGSU Spectator Platform (15 AIPlank)
- Bowling Green, OH



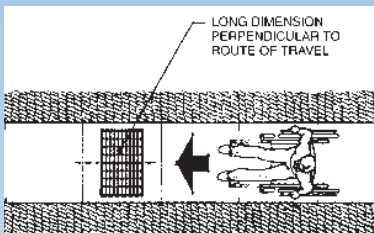
▲ 3D Anchor Plate Detail



OGi Architectural Metal Solutions
an Ohio Gratings company



Ohio Dept. of Worker's Comp. ▲
(7-SG-4) - Columbus, OH



Note: Bar grating has historically been an industrial foot walk product, intended for use in catwalks, platforms, stairways, and roadways (Heavy Duty only), and is designed to be installed in a fastened condition. This grating is standardly subject to manufacturing and fabrication tolerances as dictated by the ANSI/NAAMM Metal Bar Grating Manual. While these tolerances and the various finishes available are suitable for most industrial applications, they may not be appropriate for some commercial or architectural uses. Please contact OGi for further specification assistance.

ADA Accessibility Guidelines...

On July 26, 1991 the Architectural and Transportation Barriers Compliance Board (Access Board) published the *Americans with Disabilities Act Accessibility Guidelines* (ADAAG).

The ADA establishes accessibility requirements for new construction and alterations of state and local government facilities, and places of public accommodation and commercial facilities. As updated in the November 16, 1999 *ADAAG Notice of Proposed Rule making*, section 302.3 states that “openings in floor or ground surfaces shall allow passage of a sphere not more than one-half inch (13 mm) diameter. Elongated openings shall be placed so that the long dimension is perpendicular to the dominant direction of travel.”



▲ MARTA Subway System
- Atlanta, GA (7-SGSS-4)





GM Renaissance Plaza ▲
(7-SGSS-4) - Detroit, MI

**OGi products are ideal for a wide variety of public projects
...fountains or traditional walking surfaces!**

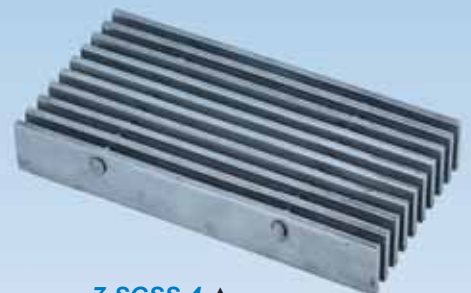


Minneapolis Central Library Tree Grate ▲
(23-WH-4) - Minneapolis, MN

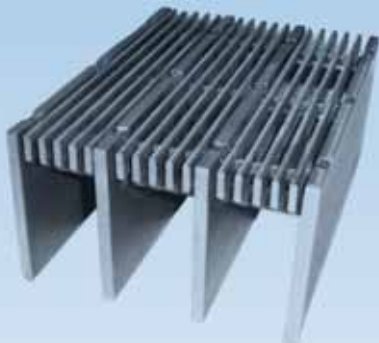
Our products are manufactured from naturally attractive aluminum extrusions, cold formed carbon steel and stainless steel (304 and 316 alloy). OGi products are available for both standard pedestrian loading as well as 18-wheeler (H-20) loading. Our technical support and manufacturing processes allows for an engineered product that will meet your specific project needs.



OGi Architectural Metal Solutions
an Ohio Gratings company



7-SGSS-4 ▲
Swaged Stainless Steel



Wheels 'n Heels® ▲
44-WH-4

**OGi products are well suited
...for a wide range of applications.**

With engineered aluminum I-bar profiles, we can provide the lightest and strongest products in the market. OGi can also offer its patented **Wheels 'n Heels®** grating system which is (pre)value engineered to carry H-20 loading while meeting ADA and high heel safety standards using 'filler' panels to reduce the overall weight of the system.

With a range of post fabrication slip-resistant treatments, OGi products are ideal for any application where aesthetics and functionality are concerns. Our products offer a range of other benefits that include:

- Reasonable Cost
- Easy Installation
- ADA and High Heel Compliant
- Minimal Maintenance
- Lightweight yet Strong

▲ **ASLA Headquarters Greenroof**
- Washington, DC (19-SGLi-4)



▲ **Thea Foss Waterway**
- Tacoma, WS (44-WH-4)



ARCHITECTURAL METAL SOLUTIONS

...WITH UNLIMITED POSSIBILITIES



OGi Architectural Metal Solutions
an Ohio Gratings company

www.ohiogratings.com ▲ 1-800-321-9800

5299 Southway Street SW ▲ Canton, OH 44706 ▲ Fax: 330-477-7872

