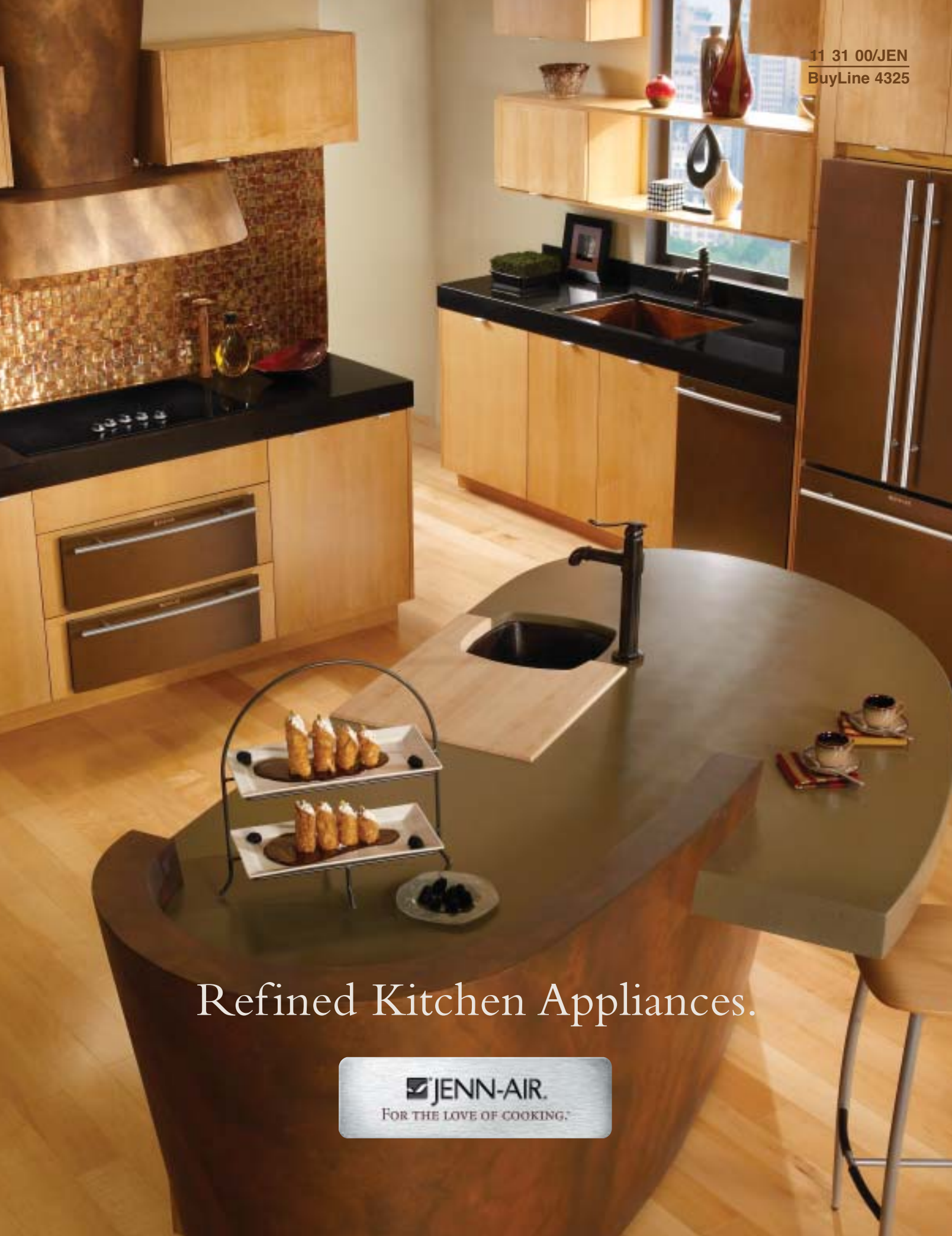


11 31 00/JEN  
BuyLine 4325



Refined Kitchen Appliances.

 **JENN-AIR.**  
FOR THE LOVE OF COOKING.™

## Product Feature Matrix

	PRO-STYLE®	EURO-STYLE GLASS	FLOATING	OILED BRONZE
<b>COOKTOPS</b>				
48" Gas	•			
48" Gas Downdraft	•			
45" Gas		■	■	
36" Gas	•			•
30" Gas	•	■	■	•
36" Electric		•		•
30" Electric 5-Burner	■	■	■	•
30" Electric 4-Burner	■	•	■	
30" Electric Downdraft	■	■	■	
Expressions™ Modular and Dual-Fuel Downdraft	■	■	■	
Designer Line 45" Gas Downdraft	■	■	■	
Designer Line 30" Gas Downdraft	■	■	■	
<b>RANGES</b>				
Dual-Fuel 36" and 30"	•	•	•	
Freestanding				
Gas 48", 36" and 30"	•	•	•	
Electric Slide-in	•	•	•	
Modular Dual-Fuel Downdraft	•	•	•	
<b>WALL OVENS</b>				
True Convection				
*30" and 27" Single	•	•	•	•*
*30" and 27" Double	•	•	•	•*
Thermal				
Convection 30" and 27" Single		•	•	
Convection 30" and 27" Double		•	•	
Microwave/Oven with Convection	•	•		
Convenience Oven 30"		•	•	
<b>WARMING DRAWERS</b>				
30"		•	•	•
<b>MICROWAVES</b>				
Built-in 27", 30" and 36"				
Convection	■	•	•	
Countertop w/Convection		•	•	
Pro-Style® Over-the-Range	•			
Over-the-Range w/Convection		■	■	
Over-the-Range w/Speedcook		■	■	
<b>VENTILATION</b>				
Pro-style® 48", 36" and 30"	•			
Wall Mount Chimney Hood 42", 36" and 30"	■	•	■	
Island Hood 42" and 36"	■	•	■	
Under Cabinet 36" and 30"	■	•	■	
Telescoping Downdraft* 36" and 30"		■	■	
Custom/Integrated 48" and 36"	■	■	■	
<b>ENTERTAINING</b>				
Wine Cellar		•	■	
Ice Machine		•	■	
Built-in Refrigerator		•	■	
<b>DISHWASHERS</b>				
Visible Controls	•			
Fully Integrated/Hidden Controls	•	•	•	•
<b>COMPACTORS</b>				
Color, Stainless and Trim Options		■	■	
<b>REFRIGERATORS</b>				
Built-in				
Side-by-Side Dispenser	•	•	■	
Side-by-Side Non-Dispenser	•	•	■	
Custom Overlay	■	■	■	
Framed	■	■	■	
Cabinet Depth				
French Door	•	•	•	•
Custom Overlay	■	■	■	
w/wo Dispenser	■	■	■	
Side-by-Side				
w/wo Dispenser	•	•	•	
w/Custom Overlay	■	■	■	
Full Depth w/wo Dispenser		•	•	

• Suite      ■ Suite Compatible

\*Recommended for electric cooktops only

## CONTENTS

2	.....	Product Matrix
2	.....	Introduction
3	.....	Oiled Bronze
4	.....	Pro-Style® Stainless
4	.....	Euro-Style Stainless
5	.....	Floating Glass
6	.....	Expressions™ Collection
7	.....	Cooktops
10	.....	Ranges
12	.....	Wall Ovens
14	.....	Microwaves/Ventilation
16	.....	Built-in Refrigerators
17	.....	Cabinet Depth Refrigerators
18	.....	Full Depth Refrigerators
19	.....	Dishwashers
19	.....	Entertaining Essentials



## JENN-AIR AND THE PROUD GOURMET.

### Think food.

Delicious dishes that are as marvelous to the eyes as they are to the taste. Now consider all that goes into creating refined, sophisticated dishes and truly flavorful meals—from absolutely fresh ingredients, to precise cooking control, to effortless cleanup. That's how to get into the proud gourmet's mindset, and that's exactly who Jenn-Air® appliances appeal to.



We offer the broadest range of style suites, several industry-exclusive finishes and features, and countless ways to enhance the entire culinary experience—all the way to enabling wise environmental actions. You can count many efficient appliances among our collection, including a lineup of all ENERGY STAR® qualified dishwashers.

To help you visualize all our offerings in a powerful way, you can download 3D digital models of Jenn-Air® products directly into your CAD designs via the Google® 3D Warehouse. Whether on-line or throughout these pages, you'll see it: a true romance with cooking.







### OILED BRONZE. A REVOLUTION IN KITCHEN DESIGN.

Gourmet cooks are likely seeking the most expressive kitchen designs, and in particular, appliances that reflect their culinary passion. That explains our pride in presenting the new Jenn-Air® Oiled Bronze suite. It's a fresh alternative for pleasing clients of discerning tastes—and a refreshing option to stainless steel.

You can see the warm, burnished bronze finish is accented by stainless steel handles and hardware. This subtle combination of metallic surfaces, along with delicately curved appliance fronts, offers you amazing design versatility.

Oiled Bronze will be at home in rustic, classic or modern surroundings. With gas and electric cooktops, wall ovens, warming drawers, refrigerators and dishwashers, you can create an entire Oiled Bronze suite—or use it as an eclectic accent with other finishes.

Oiled Bronze means you now have the freedom to think beyond just stainless steel, black and white. No matter the setting, superior Jenn-Air® craftsmanship helps assure culinary quality and enduring beauty.



## PRO-STYLE® STAINLESS

When does a kitchen become a workshop, a gathering place, a haven for creativity? When Jenn-Air® appliances are the integral means of expression. The Jenn-Air® commercial quality kitchen is best expressed through the Pro-Style® Stainless collection. With industrial-grade stainless



steel, heavy-duty diamond etched handles and oversize, easy grip knobs, the cook is always in complete control.

But can a kitchen be both powerful and beautiful? Jenn-Air assures that it can. The Jenn-Air® Pro-Style® Stainless

collection is a powerhouse of both performance and beauty, commanding the attention of any onlooker. While the appearance is incomparable, the feel is pure quality, elevating a normal cooking routine to a gourmet experience. The well-designed kitchen, the seasoned cook and the culinary outcome all become one.



## EURO-STYLE STAINLESS

For a contemporary urban loft or an old-world villa, the sleek stainless steel design of the Jenn-Air® Euro-Style Stainless line of appliances fits right in. The precise design detail is



evident in the graceful contour of the towel bar handles and curved front design.

Understated. Modern, yet timeless, our Euro-Style stainless finish blends with both worlds, contemporary and traditional.



Both angular and sculptural, each piece hints at the many functions within, while maintaining a clean, contemporary sensibility. The well-versed Euro-Style appliances are sure to delight the most demanding cooks. Intuitively-designed features like streamlined electronic touch control panels put advanced cooking options at one's fingertips and exquisite design within one's reach.



## FLOATING GLASS

The drama of the dream kitchen is reflected in the Jenn-Air® industry-exclusive full line of Floating Glass appliances. Clean, high-gloss surfaces provide a solid presence with just the right complements of stainless steel.

Dramatic. Gleaming. Our high-gloss, easy-to-

clean Floating Glass line is available in either black or white. And the glass front is a stunning alternative to stainless steel.

Innovations like electronic touch control glass cooktops

provide the ultimate in integrated design while discreetly unveiling the cooking versatility and performance of Jenn-Air® products. The seamless, trimless glass front of each appliance is constructed of a solid, tempered opaque glass panel leaving the user with a clean polished impression.

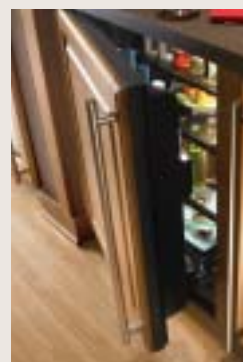


## OVERLAY PANEL APPLIANCES AND SUITES



Obviously, we design our appliances to stand out from the crowd. We also know there's a lot to be gained by blending in. From refrigerators to dishwashers to warming drawers, Jenn-Air offers versatile overlay panel models to give you distinct styling options.

In particular, our refrigerators can be customized to blend beautifully with cabinetry. Or, turn to our elegant



framed models, which accept custom panels offset by sleek stainless steel trim and matching, full-length handles.

## EXPRESSIONS™ COLLECTION DOWNDRAFT COOKTOPS

### Mix. Match. Magnificent.

Jenn-Air is long recognized for its innovations. Consider our Expressions™ Collection of gas, electric and dual-fuel downdraft cooktops. Modular configurations mean cooks can mix and match cartridges and accessories in an instant as they explore their creativity. Flush-to-the counter design provides sophisticated looks. And PermaVent™ downdraft ventilation on electric models keeps smoke, steam and odors out of the air—while also aiding in clean-up by keeping the basin pan cooler.



#### EXPRESSIONS™ COLLECTION MODULAR ELECTRIC DOWNDRAFT

**CVEX4370** (SHOWN WITH OPTIONAL AR141B RADIANT CARTRIDGES)

- Modular design • Energy Saver grill assembly and 2 open bays
- Accepts radiant or coil element cartridge or grill assembly
- Variable-speed ventilation fan • Illuminated backlit controls
- Accepts optional accessories • May be used in an island/peninsula installation • Available in black (shown) or white



#### EXPRESSIONS™ COLLECTION MODULAR ELECTRIC DOWNDRAFT

**CVEX4100**

- Modular design • Energy Saver grill assembly
- Accepts radiant or coil element cartridge in place of grill assembly
- Variable-speed ventilation fan • Illuminated backlit controls
- May be used in an island/peninsula installation
- Available in black (shown) or white (Not available in Canada)

#### CARTRIDGES AND ACCESSORIES

- Radiant Element Cartridges **AR141** B/W (side plug-in) • Electric Grill Assembly **A0330** (side plug-in) For use with modular Expressions™ Collection electric downdraft cooktops. • Conventional Coil Cartridge **AC110** B/W (side plug-in) • Griddle **A0310** • Rotiss-Kabob **A0320** (requires outlet) For use with Expressions™ Collection electric downdraft cooktops • Wok **A0142**, For use with Expressions™ Collection, Pro-Style™ and Designer Line cooktops and ranges • Big Pot Element **A145A**, For use with modular Expressions™ Collection and Designer Line electric downdraft cooktops



#### EXPRESSIONS™ COLLECTION DUAL-FUEL DOWNDRAFT

**CVEX4100 + CVGX2423**

- Four burner gas cooktop combines with electric Energy Saver grill cooktop • Electric cooktop may be placed on either side of gas cooktop and accepts optional radiant or coil element cartridge
- Variable-speed ventilation fans • Illuminated backlit controls
- Convertible to LP • May be used in an island/peninsula installation
- Available in black and gloss black burner grates and caps, or white with gloss gray burner grates and burner caps (shown)
  - (CVEX4100 not available in Canada)



#### EXPRESSIONS™ COLLECTION GAS DOWNDRAFT

**CVGX2423**

- Four sealed burners • Electronic ignition and Flame-Sensing™ re-ignition • Variable-speed ventilation fan
- Illuminated backlit controls • Accepts optional accessories
- May be used in an island/peninsula installation • Convertible to LP
- Available in black with gloss grates and burner caps (shown), or white with gloss gray grates and burner caps



#### EXPRESSIONS™ COLLECTION MODULAR ELECTRIC DOWNDRAFT

**CVEX4270** (SHOWN WITH OPTIONAL AR141B RADIANT CARTRIDGE)

- Modular design • Energy Saver grill and open bay
- Accepts radiant or coil element cartridge or grill assembly
- Variable-speed ventilation fan • Illuminated backlit controls
- Accepts optional accessories • May be used in an island/peninsula installation • Available in black (shown) or white

## DESIGNER LINE DOWNDRAFT COOKTOPS

### GAS



#### 30" DESIGNER LINE GAS DOWNDRAFT

**JGD8430AD**

- Four sealed burners including one 15,000 BTU ultra-high output burner and one 5,000 BTU burner that reduces to 900 BTUs • Electronic ignition with Flame-Sensing™ re-ignition • Porcelain-on-cast iron continuous grates, brushed stainless finish knobs • Ceran® glass-ceramic surface • 2-speed ventilation fan • Convertible to LP (kit included)
- May be used in an island/peninsula installation • Available in black with black gloss grates and burner caps, frost white with black glass grates and burner caps or black with stainless steel accents with black gloss grates and burner caps (shown)



#### 45" DESIGNER LINE MODULAR GAS DOWNDRAFT

**JGD8345AD**

- E-ven Heat™ grill assembly and a 2-burner module with sealed burners • Excalibur® nonstick grill grate finish • Electronic ignition • Porcelain-on-cast-iron continuous grates • 2-speed ventilation fan • Convertible to LP (kit included) • Accepts optional 2-burner module in place of grill • May be used in an island/peninsula installation
- Available in black with black matte grates and burner caps, white with gray matte grates and burner caps (shown) or stainless steel with black matte grates and burner caps

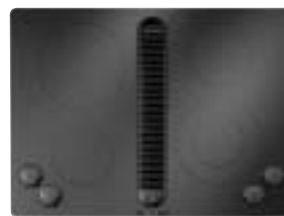


#### 30" DESIGNER LINE MODULAR GAS DOWNDRAFT

**JGD8130AD**

- E-ven Heat™ grill assembly and a 2-burner module with sealed burners • Excalibur® nonstick grill grate finish • Electronic ignition
- Porcelain-on-cast-iron continuous grates • 2-speed ventilation fan
- Convertible to LP (kit included) • Accepts optional 2 burner module in place of grill • May be used in an island/peninsula installation
- Available in black with black matte grates and burner caps (shown), white with gray matte grates and burner caps or stainless steel with black matte grates and burner caps

### ELECTRIC



#### 30" DESIGNER LINE ELECTRIC RADIANT DOWNDRAFT

**JED8430BD**

- Ceran® glass-ceramic surface • Variable-speed ventilation fan
- 3 standard radiant elements • Dual-Choice™ radiant element
- Hot surface indicator lights • Frameless design, brushed stainless finish knobs • May be used in an island/peninsula installation
- Available in black (shown), frost white or black with stainless steel accents



#### 45" DESIGNER LINE MODULAR ELECTRIC RADIANT DOWNDRAFT

**JED8345AD** (SHOWN WITH OPTIONAL JEA8120 RADIANT CARTRIDGES)

- Grill assembly and 2 open bays • Excalibur® nonstick grill grate finish
- Open bay accepts radiant or coil element cartridge or grill assembly
- 2-speed ventilation fan • 3 "on" indicator lights • May be used in an island/peninsula installation • Available in black (shown), or white



#### 30" DESIGNER LINE MODULAR ELECTRIC RADIANT DOWNDRAFT

**JED8230AD** (SHOWN WITH OPTIONAL JEA8120 RADIANT CARTRIDGE)

- Grill assembly and open bay • Excalibur® nonstick grill grate finish
- Accepts radiant or coil element cartridge or grill assembly
- 2-speed ventilation fan • 2 "on" indicator lights • May be used in an island/peninsula installation • Available in black (shown), white or stainless steel

#### CARTRIDGES AND ACCESSORIES

- Radiant Element Cartridge **JEA812ADB/W** (end plug-in) • Electric Grill Assembly **JEA8000ADB** (end plug-in), For use with modular Pro-Style® and Designer Line electric downdraft cooktops • Conventional Coil Cartridge **JEA7000ADB/W/S** (end plug-in) • Griddle **JEA8200ADX** (electric) • Griddle **JGA8200ADX** (gas) • Wok **A0142**, For use with Expressions™ Collection, Pro-Style® and Designer Line cooktops and ranges • Big Pot Element **A145A**, For use with modular Expressions™ Collection and Designer Line electric downdraft cooktops



## COOKTOPS

### Cooking is an enduring pleasure.

Planning the meal and choosing ingredients are part of it. But the truly passionate cook savors time spent stirring, sautéing and simmering dishes to perfection. Jenn-Air® cooktops are beautiful and feature-rich, making it easy



for cooks to pour themselves into their work.

Precise, consistent temperature control can be achieved with

our electric, gas or dual-fuel cooktops. As for the concerns of the designer, the option of downdraft ventilation gives you the freedom to position the cooktop anywhere in the kitchen.



CONTINUOUS PORCELAIN-ON-CAST IRON GRATES  
MAKE IT EASY TO MOVE POTS AND PANS OF DIFFERENT  
SIZES FROM BURNER TO BURNER.

## PRO-STYLE® STAINLESS



### 48" PRO-STYLE® GAS

**JGCP648ADP**

- Six sealed burners with electronic ignition and Flame-Sensing™ reignition • High output 17,000 BTU burners • Low output 5,000 BTU burners reduce to ultra-low 650 BTU rate • Electric griddle with nonstick surface • Convertible to LP • Control panel extension for stock or custom cabinetry installation • Pro-Style® Stainless design with oversized stainless steel knobs and matte black burner grates and caps



### 48" PRO-STYLE® GAS DOWNDRAFT

**JGD8348CDP**

- Downdraft ventilation with two-speed fan • Comes with E-even Heat™ grill assembly and 2 two-burner modules with sealed burners
- Electronic ignition • Accepts optional two-burner module and gas grill accessories in left cooking bay • Excalibur® nonstick grill grate finish
- Convertible to LP • Control panel extension for stock or custom cabinetry installation • Pro-Style® Stainless design with oversized stainless steel knobs and matte black burner grates and caps



### 36" PRO-STYLE® GAS

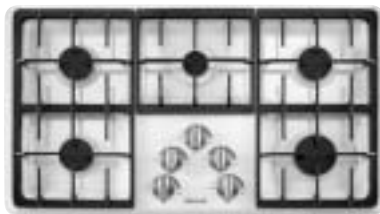
**JGCP636ADP**

- Six sealed burners with electronic ignition and Flame-Sensing™ reignition • High-output 17,000-BTU burners • Low output 5,000-BTU burners reduce to ultra-low 650-BTU setting • Convertible to LP
- Control panel extension for stock or custom cabinetry installation
- Pro-Style® stainless design with oversized stainless steel knobs and matte black burner grates and caps



## EURO-STYLE STAINLESS, FLOATING GLASS AND OILED BRONZE

### GAS



**36"**

**JGC1536AD**

- Five sealed burners including one 17,000 BTU ultra-high output burner and one 5,000 BTU simmer burner • Electronic ignition with SureFlame ignition protection • Porcelain-on-cast iron continuous grates, cast metal knobs • Porcelain enamel or stainless steel surface
- Convertible to LP (kit included) • May be installed over Jenn-Air® 30" electric single wall ovens • Available in black, white or stainless steel (shown)

**ALSO AVAILABLE IN 30" JGC1430AD**



**36" GAS**

**JGC9536BD**

- Frameless, Ceran® glass-ceramic surface • Smart Port burner design
- Five sealed burners including one 17,000 BTU ultra high-output burner and two 5,000 BTU burners that reduce to ultra-low 650 BTUs
- Electronic ignition and Flame-Sensing™ Re-Ignition • Porcelain-on-cast iron continuous grates, cast metal knobs • Porcelain enamel or stainless steel surface • Convertible to LP (kit included) • May be installed over Jenn-Air® 30" electric single wall ovens • Available in black, frost white, Oiled Bronze or black with stainless steel accents (shown)

**ALSO AVAILABLE IN 30" JGC9430BD**



**30" GAS**

**JGC8430AD**

- Compatible with Euro-Style Stainless, Floating Glass or Oiled Bronze
- Smart Port burner design • Four sealed burners including one 15,000 BTU ultra high-output burner and one 5,000 BTU burner that reduces to ultra-low 650 BTUs • Electronic ignition and Flame-Sensing™ Re-Ignition • Frameless porcelain enamel or stainless steel surface
- Porcelain-on-cast iron continuous grates, brushed stainless finish knobs • Convertible to LP (kit included) • May be installed over Jenn-Air® 30" electric single wall ovens • Available in black (shown) or stainless steel with black matte grates and burner caps or white with gray gloss grates and burner caps

**ALSO AVAILABLE IN 36" JGC8536AD**

### ELECTRIC



**36" ELECTRONIC TOUCH CONTROL**

**JEC0536AD**

- Glass-touch electronic controls • 12 1/8" Triple-Choice™ element
- 9 1/8" CustomControl Dual-Choice™ element • 7" Cook & Warm element • Warming Center™ element • Ceran® glass-ceramic surface
- 5 hot surface indicator lights • Frameless design • May be installed above Jenn-Air® 30" electric single wall ovens • Available in black (shown), pearl white or black with stainless steel accents

**ALSO AVAILABLE IN 30" JEC0530AD**



**36" ELECTRIC RADIANT**

**JEC9536BD**

- 9 1/8" CustomControl Dual-Choice™ element • 12 1/8" Dual-Choice™ element • Warming Center™ element • Cast metal knobs • Ceran® glass-ceramic surface • 5 hot surface indicator lights • Frameless design
- May be installed above Jenn-Air® 30" electric single wall ovens
- Available in black, frost white, Oiled Bronze or black with stainless steel accents (shown)

**ALSO AVAILABLE IN 30" JEC9530BD**



**30" ELECTRIC RADIANT**

**JEC8430AD**

- 9 1/8" Dual-Choice™ element • Brushed stainless finish knobs
- Ceran® glass-ceramic surface • 4 hot surface indicator lights
- Frameless design • May be installed above Jenn-Air® 30" electric single wall ovens • Available in black, pearl white, frost white or black with stainless steel accents (shown)

**ALSO AVAILABLE IN 36" JEC8536AD**

## RANGES

### A kitchen begins with the essentials.

There are certain ingredients a cook simply can't live without. They're items like herbs, spices, flour and pasta, which are valued for their versatility in bringing a wide range of dishes to life—much like a Jenn-Air® range. Consider your options: slide-in or freestanding; gas, electric or dual-fuel. With their incredible combinations of cooking flexibility and style, Jenn-Air ranges are designed to be a staple in your clients' kitchens.



#### 48"/36"/30" PRO-STYLE® SOFFIT

**JXA9048CDP (SHOWN)**

**JXA9036CDP/JXA9030CDP**

- Stainless steel • For use when installation location has no soffit

#### 48"/36"/30" PRO-STYLE® WALLSPASH

**JXA9001CDP (SHOWN)**

**JXA9002CDP/JXA9003CDP**

- Stainless steel • Two wire storage racks
- Use in conjunction with PRAD/G model backsplash and JXT90/91 model hoods

## PRO-STYLE® STAINLESS



#### 48" PRO-STYLE® GAS RANGE WITH CONVECTION

**PRG4810NP**

(SHOWN WITH OPTIONAL 22" BACKSPASH)

- Six sealed burners with electronic ignition and Flame-Sensing™ Re-Ignition • Two Dual Flame™ 15,000 BTU burners that reduce to ultra-low 570 BTUs • Four 15,000 BTU burners • 5.3 cu. ft. bake/broil oven • 2.2 cu. ft. secondary bake oven
- Pro-Style® Stainless design includes oversized stainless steel knobs, stainless steel towel bar handle with diamond-etched grip and porcelain-on-cast iron black matte grates and burner caps • Backsplash required (not included)
- **PRG4810LP** identical to PRG4810NP but is for use with LP gas only

**ALSO AVAILABLE: 36" PRG3610NP/PRG3610LP AND 30" PRG3010NP/PRG3010LP**



#### 30" PRO-STYLE® MODULAR DUAL-FUEL DOWNDRAFT WITH CONVECTION

**JDS9865BDP**

- Two sealed burners and electric oven with convection • 2-speed ventilation fan
- E-ven Heat™ grill assembly • Ultra-high performance 16,000 BTU • PowerBurner and 5,000 BTU burner that reduces to ultra-low 650 BTUs • Electronic ignition and Flame-Sensing™ Re-Ignition • Accepts 2-burner module accessory in place of grill • 4.3 cu. ft. CustomClean™ self-cleaning bake/broil oven • 2-speed MultiMode® convection with Auto Convection Cooking • Menu-driven electronic oven controls
- Convertible to LP (kit included) • Pro-Style® Stainless design includes oversized stainless steel knobs, stainless steel towel bar handle with diamond-etched grip and porcelain-on-cast iron black matte grates and burner caps



#### 36" PRO-STYLE® DUAL-FUEL WITH CONVECTION

**PRD3630NP**

(SHOWN WITH OPTIONAL 12" BACKSPASH)

- Six sealed burners and electric oven with convection • Two Dual Flame™ 15,000 BTU burners that reduce to ultra-low 570 BTUs
- Four standard 15,000 BTU burners • Electronic ignition and Flame-Sensing™ Re-Ignition • 4.7 cu. ft. bake/broil oven • Convertible to LP (kit included)
- Pro-Style® Stainless design includes oversized stainless steel knobs, stainless steel towel bar handle with diamond-etched grip and porcelain-on-cast iron black matte grates and burner caps • Backsplash required (not included)

**ALSO AVAILABLE 30" PRD3030NP**



#### 30" PRO-STYLE® DUAL-FUEL WITH CONVECTION

**JDS8860BDP**

- Four sealed burners and electric oven with convection • Electronic ignition and Flame-Sensing™ Re-Ignition • Ultra-high performance 16,000 BTU PowerBurner and 5,000 BTU burner that reduces to ultra-low 650 BTUs
- EvenThree™ 15,000 BTU burner that reduces to 750 BTUs • 4.5 cu. ft. CustomClean™ self-cleaning bake/broil oven • 2-speed MultiMode® convection with Auto Convection Cooking • Menu-driven electronic oven controls
- Convertible to LP (kit included) • Pro-Style® Stainless design includes oversized stainless steel knobs, stainless steel towel bar handle with diamond-etched grip and porcelain-on-cast iron black matte grates and burner caps

**ALSO AVAILABLE IN GAS JGS8860BDP**

## EURO-STYLE STAINLESS AND FLOATING GLASS

### SLIDE-IN



#### 30" MODULAR DUAL-FUEL DOWNDRAFT WITH CONVECTION

**JDS9860BD**

- Two sealed burners and electric oven with convection • 2-speed ventilation fan • E-ven Heat™ grill assembly • Ultra-high performance 16,000 BTU burner and 5,000 BTU burner that reduces to ultra-low 650 BTUs • 4.3 cu. ft. CustomClean™ self-cleaning bake/broil oven • Multi-Mode® convection with Auto Convection Conversion • Convertible to LP (kit included) • Black satin-matte grates and burners caps • Euro-Style Stainless design or Floating Glass design in black or white (shown)

**ALSO AVAILABLE IN ELECTRIC JES9860BA**



#### 30" GAS DOWNDRAFT WITH CONVECTION

**JGS9900BD**

- 2-speed ventilation fan • Ceran® glass-ceramic cooking surface • 4.3 cu. ft. CustomClean™ self-cleaning bake/broil oven • MultiMode® Convection • Ultra-high 16,000 BTU PowerBurner and 5,000 BTU burner that reduces to ultra-low 650 BTUs • EvenThree™ 15,000 BTU burner that reduces to 750 BTUs • Convertible to LP (kit included) • Black satin-matte grates and burners caps • Euro-Style Stainless (shown) design or Floating Glass design in black or white

**ALSO AVAILABLE IN ELECTRIC JES9900BA**



#### 30" ELECTRIC WITH CONVECTION

**JES8850BA**

- Ceran® glass-ceramic cooking surface • 4.5 cu. ft. CustomClean™ self-cleaning bake/broil oven • 12"/9"/6" Triple-Choice™ element • 9"/6" CustomControl Dual-Choice™ element • 6" Cook & Warm element • 6" Cook & Warm element • Warming drawer • MultiMode® convection with Auto Convection Conversion • Euro-Style Stainless design includes black accents or Floating Glass design in black (shown) or frost white

**ALSO AVAILABLE IN GAS JGS8850BD AND DUAL-FUEL JDS8850BD**

### FREE-STANDING



#### 30" DUAL-FUEL DOUBLE OVEN WITH CONVECTION

**JDR8895AA**

- Cooktop:** • Five sealed burners with electronic ignition and SureFlame™ ignition protection • Ultra-high 16,000 BTU PowerBurner and 5,000 BTU burner that reduces to ultra-low 650 BTUs • Black matte grates and burners caps and brushed stainless finish control knobs • Convertible to LP(kit included)

- Upper oven:** • 1.4 cu. ft. CustomClean™ self-cleaning oven with bake, broil, and toast settings • Menu-driven electronic oven controls

- Lower oven:** • 4.0 cu. ft. CustomClean™ self-cleaning bake/broil oven • Two-mode convection with Auto Convection Conversion

- Euro-Style Stainless design(shown) includes black accents or Floating Glass design in black or white

**ALSO AVAILABLE IN PRO-STYLE® STAINLESS GAS JGR8890ADP**



#### 30" GAS WITH CONVECTION

**JGR8875RD**

- Five sealed burners with electronic and SureFlame protection
- Ultra-high 16,000 BTU PowerBurner and 5,000 BTU burner that reduces to ultra-low 650 BTUs • 5.3 cu. ft. CustomClean™ self-cleaning bake/broil oven • Menu-driven electronic controls • MultiMode® convection with Auto Convection Conversion • Convertible to LP (kit included) • Black satin-matte grates and burner caps, brushed stainless finish control knobs • Euro-Style Stainless design includes black accents or Floating Glass design in black or frost white (shown)



## WALL OVENS

### The daily pursuit of indulgence.

Every day is a good day for something wonderful to come out of the oven. With advanced functions like MultiMode® convection and Auto Convection Conversion—both of which help enhance convection cooking—Jenn-Air® wall ovens encourage a cook's creativity. Possibilities include single and double wall ovens, microwave/wall oven combos and a convenience oven. These choices, and more, enable you to create your clients' perfect kitchens.



## WALL OVEN COMPLEMENTS

Jenn-Air® products offer a variety of options to customize your kitchens. The exclusive Jenn-Air® convenience oven provides excellent baking, broiling and toasting results in a more compact space. A Jenn-Air® warming drawer keeps menu items warm until ready to serve. Both products are versatile enough to be used in the kitchen, rec room, bar area or wherever guests are entertained, and are designed to coordinate with the complete line of wall ovens, microwave/wall oven combos and built-in microwaves.



**30" CONVENIENCE OVEN**  
**JJW7530DD**

- Electronic controls • CustomClean™ self cleaning bake/broil/toast oven • Curved front styling, flush-to-cabinet design
- Sleek, stainless steel towel bar handle
- Euro-Style Stainless design (shown) or Floating Glass design in black or white



**30" WARMING DRAWER**  
**JWD7030CDX**

- Capacity to hold up to four 11" plates
- 82°F-210° F variable temperature control settings • Moist/Crisp variable moisture slide control • Sleek, stainless steel towel bar handle • Requires separate front panel

### WARMING DRAWER FRONT PANELS



**JWD7130DDR**  
Oiled Bronze Front



**JWD7130DDW/B**  
Floating Glass Front



**JWD7130DDP**  
Pro-Style® Stainless Front

## PRO-STYLE® STAINLESS



**30" PRO-STYLE® ELECTRIC DOUBLE OVEN WITH CONVECTION**

**JJW9830DDP**

- Menu-driven Smart Touch electronic controls with customization features
- 2-speed MultiMode® convection with Auto Convection Conversion • CustomClean™ self-cleaning ovens • 3 racks including an EasyRack™ oven rack and Create-A-Space™ Half-Rack • Pro-Style® Stainless design with oversized stainless steel knobs and stainless steel towel bar handles with diamond-etched grip

**ALSO AVAILABLE IN 27" JJW9827DDP**



**30" PRO-STYLE® ELECTRIC SINGLE OVEN WITH CONVECTION**

**JJW9530DDP**

- Menu-driven Smart Touch electronic controls with customization features
- 2-speed MultiMode® convection with Auto Convection Conversion • CustomClean™ self-cleaning oven • 3 racks including an EasyRack™ oven rack and Create-A-Space™ Half-Rack • Under counter or in-wall installation • Pro-Style® Stainless design with oversized stainless steel knobs and stainless steel towel bar handle with diamond-etched grip

## DOUBLE OVENS



### 30" ELECTRIC DOUBLE OVEN WITH CONVECTION

**JJW9830DD**

- Menu-driven Smart Touch electronic controls with customization features
  - 2-speed MultiMode® convection with Auto Convection Conversion • CustomClean™ self-cleaning ovens • 3 racks including an EasyRack™ oven rack and Create-A-Space™ Half-Rack in both ovens • Curved front styling, flush-to-cabinet design • Sleek, stainless steel towel bar handles • Euro-Style Stainless design, Floating Glass design in black or white or Oiled Bronze design available in 30" width only (shown)
- ALSO AVAILABLE IN 27" JJW9827DD**



### 30" ELECTRIC DOUBLE OVEN WITH UPPER CONVECTION

**JJW9630DD**

- Menu-driven Smart Touch electronic controls with customization features
  - 2-speed MultiMode® convection with Auto Convection Conversion (upper oven)
  - CustomClean™ self-cleaning ovens • 3 racks including an EasyRack™ oven rack and Create-A-Space™ Half-Rack in both ovens
  - Curved front styling • Sleek, stainless steel towel bar handles • Euro-Style Stainless design or Floating Glass design in black (shown) or white
- ALSO AVAILABLE IN 27" JJW9627DD**



### 30" ELECTRIC DOUBLE OVEN

**JJW8630DD**

- Menu-driven Smart Touch electronic controls with customization features
  - CustomClean™ self-cleaning ovens • 2 racks including an EasyRack™ oven rack in both ovens • Curved front styling, flush-to-cabinet design • Sleek, stainless steel towel bar handles • Euro-Style Stainless design (shown) or Floating Glass design in black or white
- ALSO AVAILABLE IN 27" JJW8627DD**

## SINGLE OVENS



### 30" ELECTRIC SINGLE OVEN WITH CONVECTION

**JJW9530DD**

- Menu-driven Smart Touch electronic controls with customization features
  - 2-speed MultiMode® convection with Auto Convection Conversion • Curved front styling • Under counter (30" only) or in-wall installation • Sleek, stainless steel towel bar handles • Euro-Style Stainless design, Floating Glass design in black or white or Oiled Bronze design available in 30" only (shown)
- ALSO AVAILABLE IN 27" JJW9527DD**



### 30" ELECTRIC OVEN

**JJW9330DD**

- Electronic controls • Two-Mode® convection with Auto Convection Conversion • Bake/broil oven with Six-Pass™ broil element and variable temperature broiling • CustomClean™ self-cleaning oven • 3 racks • Under counter (30" only) or in-wall installation • Flush-to-cabinet-styling • Sleek, stainless steel towel bar handles • Black (shown), white or stainless steel
- ALSO AVAILABLE IN 27" JJW9327DD**



### 30" ELECTRIC SINGLE OVEN

**JJW8530DD**

- Menu-driven Smart Touch electronic controls with customization features
  - Bake/broil oven with Six-Pass™ broil element and variable temperature broiling
  - CustomClean™ self-cleaning oven • 2 racks including an EasyRack™ oven rack • Curved front styling • Under counter (30" only) or in-wall installation • Sleek, stainless steel towel bar handles • Euro-Style Stainless design (shown) or Floating Glass design in black or white
- ALSO AVAILABLE IN 27" JJW8527DD**

## MICROWAVE/OVEN COMBINATIONS



### 30" MICROWAVE/OVEN WITH CONVECTION

**JMW9530DA**

**Upper Microwave Oven:** • 1.5 cu. ft. • 1000 watts • Stainless steel interior • Drop-down door with sleek, stainless steel towel bar handle  
**Lower Oven:** • Menu-driven Smart Touch electronic controls with customization features • 2-speed MultiMode® convection with Auto-Convection Conversion • CustomClean™ self-cleaning oven • Bake/broil oven with 8-Pass broil element and variable temperature broiling • Hidden bake element • 3 racks including an EasyRack™ oven rack and Create-A-Space™ Half-Rack • Curved front styling  
 • Sleek, stainless steel towel bar handle • Euro-Style Stainless design (shown) or Floating Glass design in black or white

**ALSO AVAILABLE IN 27" JMW9527DA**



### 30" MICROWAVE/OVEN

**JMW8530DAB**

**Upper Microwave Oven:** • 1.5 cu. ft. • 1000 watts • Stainless steel interior • Drop-down door with sleek, stainless steel towel bar handle  
**Lower Oven:** • Menu-driven Smart Touch electronic controls with customization features • CustomClean™ self-cleaning oven • Bake/broil oven with 8-Pass broil element and variable temperature broiling • Hidden bake element • 2 racks including an EasyRack™ oven rack  
 • Curved front styling • Sleek, stainless steel towel bar handle  
 • Euro-Style Stainless design or Floating Glass design in black (shown) or white

**ALSO AVAILABLE 27" JMW8527DA**

## MICROWAVES

### PRO-STYLE® STAINLESS



### PRO-STYLE® OVER-THE-RANGE MICROWAVE OVEN WITH SPEED-COOK CONVECTION

**JMV9169BA**

• 1.6 cu. ft. capacity • 950 watts • Stainless steel interior with glass turntable • Variable Temperature Convection cooking, Micro Convection and Auto Broil • Speed-Cook combination cooking • 5-level built-in exterior exhaust system with automatic time set • Concealed auto-closing vent system • Pro-Style® Stainless design (shown) includes stainless steel handle with diamond-etched grip • Also available in black, white or stainless steel with black accents including sleek, stainless steel handle

### EURO-STYLE STAINLESS AND FLOATING GLASS



### 30" BUILT-IN MICROWAVE

**JMC8130DD**

• 1.5 cu. ft. capacity • 1000 watts • Stainless steel interior with glass turntable • 10 power levels • Pre-programmed auto sensor microwave cooking • Drop-down door • May be installed over Jenn-Air® 27" or 30" single electric wall ovens • Curved front styling • Sleek, stainless steel towel bar handle • Euro-Style Stainless design (shown) or Floating Glass design in black or white

**ALSO AVAILABLE IN 27" JMC8127DD**



### 30" OVER-THE-RANGE MICROWAVE

**JMV8208BA**

• 2.0 cu. ft. capacity • 1100 watts • Glass Wide-glide™ tray • 10 power levels  
 • Pre-programmed dual distribution auto sensor microwave cooking  
 • 5-level built-in exterior exhaust system • 300 CFM • Sleek stainless steel handle • Black, white or stainless steel with black accents (shown)



### 30" OVER-THE-RANGE MICROWAVE WITH CONVECTION

**JMV8166BA**

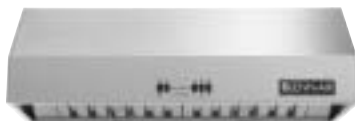
• 1.6 cu. ft. capacity • 950 watts • Stainless steel interior • Glass turntable with on/off selection • Variable Temperature Convection cooking and Micro Convection cooking • 5-level built-in exterior exhaust system with automatic time set • Black (shown), white or stainless with black accents



## VENTILATION



- 48"/36"/30" PRO-STYLE® HOOD**  
**JXT9048CDP/JXT9036CDP/JXT9030CDP**
- 18-inch height • 1100 CFM dual centrifugal blowers • 6 speed settings
  - Electronic touch controls • Halogen lighting with night light setting • Two food warming lamps • Quiet operation
  - Optional soffit chimney available
  - Pro-Style® Stainless design



- 36"/30" PRO-STYLE® LOW PROFILE HOOD**  
**JXT9136CDP/JXT9130CDP**
- 10-inch height • 650 CFM dual centrifugal blowers • 6 speed settings
  - Electronic touch controls • Halogen lighting with night light setting
  - Quiet operation • Optional soffit chimney available • Pro-Style® Stainless design



**36" CURVED WALL-MOUNT CHIMNEY**  
**JXT8836AD**

- 650 CFM ventilation system • 6 speed settings • Electronic touch controls
- Dual halogen lighting with night light setting • 15-minute delay shutoff for fan and lights • Quiet operation
- Sleek, curved stainless steel styling



**36"/30" TELESCOPING DOWNDRAFT VENTILATION**  
**HV363/HV303**

- Variable-speed downdraft exhaust fan
- Touch-activated telescoping operation
- Vertical or horizontal exterior venting
- Optional white or stainless steel cap
- Recommended for use with electric cooktops only



**36" INTEGRATED VENTILATION SYSTEM FOR CUSTOM HOOD INSTALLATION**  
**JXT7036AD**

- Ventilation system of custom-built installation • 1150 CFM dual centrifugal blowers • 3 speed settings • Slide controls
- Triple halogen lighting • Stainless steel

**INTEGRATED HOOD LINERS**  
 (NOT SHOWN)

- 48" JXT7148AD/42" JXT7142AD**
- For use in custom installations with JXT7036AD ventilation system
  - Stainless steel



**42"/36"/30" WALL-MOUNT CHIMNEY**  
**JXT8042AD/JXT8036AD/JXT8030AD**

- 650 CFM ventilation system • 6 speed settings • Electronic touch controls
- Dual halogen lighting with night light setting • 15-minute delay shutoff for fan and lights • Quiet operation
- Stainless steel styling



**42"/36" ISLAND-MOUNT CHIMNEY**  
**JXT8142AD/JXT8136AD**

- 650 CFM ventilation system • 6 speed settings • Electronic touch controls
- Quad halogen lighting with night light setting • 15-minute delay shutoff for fan lights • Quiet operation
- Stainless steel styling

## BUILT-IN REFRIGERATORS

Very fresh, indeed.

The freshness of seafood, produce or fruit isn't a quality avid cooks are willing to compromise on. Nor is the style of their kitchen. For these reasons and more, Jenn-Air is the perfect place to turn. Jenn-Air® Built-in Refrigerators can be personalized to meet your clients' needs, from exterior design options to interior storage selections.



### 48" BUILT-IN WITHOUT DISPENSER (OVERLAY)

- JS48CSFXDA WITH DISPENSER/JS48CSD\*DA**
- Cubed/crushed ice and water dispenser with Touch Sensor™ controls • Precision Temperature Management™ System with variable-speed compressor • Spill-proof, slide-out Elevator™ shelf • Freezer Elevator™ shelf • Overlay design for custom panels and handles (shown)
- ALSO AVAILABLE 42" (JS42CSD\*DA/JS42CSFXDA)**

### 48" BUILT-IN WITH DISPENSER

- 48" JS48PPDBDA PRO-STYLE® STAINLESS (SHOWN)**  
**48" JS48SEDBDA EURO-STYLE STAINLESS**  
**48" JS48CSD\*DA OVERLAY**
- Cubed/crushed ice and water dispenser with Touch Sensor™ controls • Precision Temperature Management™ System • Spill-proof, slide-out Elevator™ shelf • Pro-Style® Stainless design includes stainless steel handle with diamond-etched grip
- ALSO AVAILABLE IN 42"**  
**42" JS42PPDBDA PRO-STYLE® STAINLESS**  
**42" JS42SEDBDA EURO-STYLE STAINLESS**  
**42" JS42CSD\*DA OVERLAY**

### 42" BUILT-IN WITHOUT DISPENSER

- 42" JS42PPFXDA PRO-STYLE® STAINLESS**  
**42" JS42SEFXDA EURO-STYLE STAINLESS (SHOWN)**  
**42" JS42CSFXDA OVERLAY**
- Precision Temperature Management™ System with variable-speed compressor • 2 storage drawers with ClimateZone™ technology • Spill-proof, slide-out Elevator™ shelf • Freezer Elevator™ shelf • Automatic ice maker with storage drawer
- Available Euro-Style Stainless design includes sleek stainless steel handles
- ALSO AVAILABLE IN 48"**  
**48" JS48PPFXDA PRO-STYLE® STAINLESS**  
**48" JS48SEFXDA EURO-STYLE STAINLESS**  
**48" JS48CSFXDA OVERLAY**

## BOTTOM-FREEZER REFRIGERATORS



### CABINET DEPTH FRENCH DOOR JFC2089H

- 20 cu. ft. capacity • TriSensor™ electronic climate control • Tempered glass, spill-proof, slide-out refrigerator shelves • Temperature-controlled Gourmet Bay™ drawer with self-opening lid and Wine Hold bin • PuriClean™ II retractable ice/water filter • ENERGY STAR® qualified • Euro-Style Stainless design, Pro-Style® Stainless design, Floating Glass design in black or white, Oiled Bronze (shown) or Overlay design for custom panels and handles



### FULL DEPTH FRENCH DOOR JFD2589KE

- 25 cu. ft. capacity • TriSensor™ electronic climate control • Tempered glass, spill-proof, slide-out refrigerator shelves • Temperature-controlled Gourmet Bay™ drawer with self-opening lid and Wine Hold bin • PuriClean™ II retractable ice/ water filter • ENERGY STAR® qualified • Pro-Style® Stainless design (shown) or Euro-Style Stainless design



### CABINET DEPTH EURO-STYLE JBR2088HES

- 20 cu. ft. capacity • TriSensor™ electronic climate control • Internal water dispenser • Tempered glass, spill-proof, slide-out refrigerator shelves • Temperature- controlled Gourmet Bay™ drawer with self-opening lid and Wine Hold bin • PuriClean™ II retractable ice/water filter • ENERGY STAR® qualified • Euro-Style Stainless design • Sleek, stainless steel handles, stainless steel wrapped doors and black textured steel cabinet
- ALSO AVAILABLE LEFT-HAND DOOR SWING  
JBL2088HES**

## CABINET DEPTH SIDE-BY-SIDE REFRIGERATORS

Flush-to-the-cabinet design offers a cleanly integrated look. A variety of configurations, feature packages, styles and colors are available in Pro-Style® Stainless and Euro-Style Stainless with stainless steel wapped doors, or Floating Glass Design in black or white. Select models accept custom wood panels to blend with cabinetry.



JCB2287KEY



All Jenn-Air® cabinet depth refrigerator models are ENERGY STAR® rated.



### PRO-STYLE® WITH DISPENSER JCD2295KEP

- 22 cu. ft. capacity • TriSensor™ electronic climate control with ConvectCool® airflow
  - Always Ice™ automatic ice maker with storage bin • PuriClean® II retractable ice/water filter
  - Ultimate QuietSeries™ II sound package
  - ENERGY STAR® qualified • Pro-Style®
- Stainless design includes stainless steel handles with diamond-etched grip, stainless steel wrapped doors and black textured steel cabinet



### EURO-STYLE WITH DISPENSER JCD2295KES

- 22 cu. ft. capacity • TriSensor™ electronic climate control with ConvectCool® airflow
  - Always Ice™ automatic ice maker with storage bin • PuriClean® II retractable ice/water filter • Ultimate QuietSeries™ II sound package • ENERGY STAR® qualified
- Euro-Style Stainless design includes sleek, stainless steel handles, stainless steel wrapped doors and black textured steel cabinet



### FLOATING GLASS WITH DISPENSER JCD2297KEY/F

- 22 cu. ft. capacity • TriSensor™ electronic climate control with ConvectCool® airflow
- Always Ice™ automatic ice maker with storage bin • PuriClean® II retractable ice/water filter
- Ultimate QuietSeries™ II sound package
- ENERGY STAR® qualified • Floating Glass design in black or white (shown) includes sleek, stainless steel handles and color-coordinating textured steel cabinet



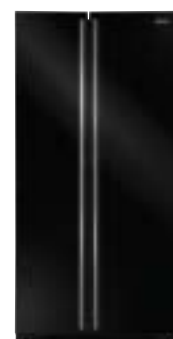
### PRO-STYLE® NON-DISPENSER JCB2285KEP

- 22 cu. ft. capacity • TriSensor™ electronic climate control with ConvectCool® airflow
  - Always Ice™ automatic ice maker with storage bin • Ultimate QuietSeries™ II sound package
  - ENERGY STAR® qualified • Pro-Style®
- Stainless design includes stainless steel handles with diamond-etched grip, stainless steel wrapped doors and black textured steel cabinet



### EURO-STYLE NON-DISPENSER JCB2285KES

- 22 cu. ft. capacity • TriSensor™ electronic climate control with ConvectCool® airflow
  - Always Ice™ automatic ice maker with storage bin • Ultimate QuietSeries™ II sound package
  - ENERGY STAR® qualified • Euro-Style
- Stainless design includes sleek, stainless steel handles, stainless steel wrapped doors and black textured steel cabinet



### FLOATING GLASS NON-DISPENSER JCB2287KEY/F

- 22 cu. ft. capacity • TriSensor™ electronic climate control with ConvectCool® airflow
- Always Ice™ automatic ice maker with storage bin • Ultimate QuietSeries™ II sound package
- ENERGY STAR® qualified • Floating Glass design in black (shown) or white includes sleek, stainless steel handles and color-coordinating textured steel cabinet



## FULL DEPTH REFRIGERATORS

### Extra capacity to please the chef.

Whether it's the desire to keep ample quantities of the freshest ingredients on hand, or simply to have plenty of room for bowls and dishes, Jenn-Air graciously obliges. Our full depth refrigerators increase capacity to 26 cubic feet for abundant food storage space. These side-by-side models include an in-door ice and water dispenser, slide-out Elevator™ shelves, plus a host of other features. They're compatible with either Euro-Style or Floating Glass design in black or white—and all are ENERGY STAR® qualified.



**EURO-STYLE WITH DISPENSER**  
**JSD2695KES**

- 26 cu. ft. capacity • TriSensor™ electronic climate control with ConvectCool® airflow
  - 2 spill-proof, slide out Elevator™ shelves
  - Always Ice™ automatic ice maker with storage bin • PuriClean® II retractable ice/water filter
  - Ultimate QuietSeries™ II sound package
  - ENERGY STAR® qualified • Euro-Style
- Stainless design includes sleek, stainless steel handles, stainless steel wrapped doors and black textured steel cabinet

**ALSO AVAILABLE IN HIGH-GLOSS BLACK OR WHITE JSD2695KGB/W**



**FLOATING GLASS WITH DISPENSER**  
**JSD2697KEY/F**

- 26 cu. ft. capacity • TriSensor™ electronic climate control with ConvectCool® airflow
  - 2 spill-proof, slide out Elevator™ shelves
  - Always Ice™ automatic ice maker with storage bin • PuriClean® II retractable ice/water filter
  - Ultimate QuietSeries™ II sound package
  - ENERGY STAR® qualified • Floating Glass
- design in black (shown) or white includes sleek, stainless steel handles and color-coordinating textured steel cabinet



**FULL DEPTH WITH DISPENSER**  
**JSD2690HEB/W/S**

- 26 cu. ft. capacity • Twin Fresh™ electronic climate control • Electronic ice and water dispenser • PuriClean® II retractable ice/water filter • QuietSeries™ sound package • ENERGY STAR® qualified • Available in black (shown) or white with full-length silver-etched handles and black textured steel cabinet



All Jenn-Air® full-depth refrigerator models are ENERGY STAR® rated.

## DISHWASHERS



### PRO-STYLE® STEAMCLEAN DISHWASHER JDB2150AWP

- Pushbutton/dial controls • Tall tub design with stainless steel interior and door liner
- 5-level/7-tier UltraClean wash system
- 12 cycle/option selections including Sensor Clean cycle with ClearScan™ turbidity sensor
- Sanitize, SuperScrub, Extra Rinse, Delay, and 160° rinse options • Silent Pack 4000 sound package • ENERGY STAR® qualified
- Pro-Style® Stainless design includes handle and diamond-etched grip



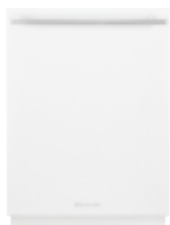
### 3-RACK DISHWASHER JDB2100AW

- Fully integrated control panel with electronic touch controls • Tall tub design with stainless steel interior and door liner • 7-level/10-tier UltraClean wash system • 13 cycle/option selections including Sensor Clean cycle with ClearScan™ turbidity sensor • Sanitize, SuperScrub, Extra Rinse, Delay, and 160° rinse options • Diamond Graphite rack finish with Cushion Grip tines • Silent Pack 4000 sound package • ENERGY STAR® qualified
- Euro-Style design, black (shown) or white with stainless steel towel bar handle



### 2-RACK DISHWASHER JDB1250AW

- Fully integrated control panel with electronic touch controls • Tall tub design with stainless steel interior and door liner • 5-level/7-tier UltraClean wash system • 12 cycle/option selections including Sensor Clean cycle with ClearScan™ turbidity sensor • Silent Pack 4000 sound package • ENERGY STAR® qualified
- Pro-Style® Stainless design includes handle with diamond-etched grip, Oiled Bronze design (shown) with sleek stainless steel towel bar handle • Euro-Style Stainless design, black or white



### 2-RACK DISHWASHER JDB1270AW

- Fully integrated control panel with electronic touch controls • Tall tub design with stainless steel interior and door liner
- 5-level/7-tier UltraClean wash system • 12 cycle/option selections including Sensor Clean cycle with ClearScan™ turbidity sensor
- Silent Pack 4000 sound package • ENERGY STAR® qualified • Curved front styling
- Floating Glass design in black or white (shown), includes sleek, stainless steel towel bar handle



### 2-RACK STEAMCLEAN DISHWASHER JDB1105AW

- Fully integrated control panel with electronic touch controls • Tall tub design with stainless steel interior and door liner • 5-level/7-tier UltraClean wash system • 13 cycle/option selections including SteamClean option and Sensor Clean cycle with CleanScan™ turbidity sensor • Silent Pack sound package • ENERGY STAR® qualified • Euro-Stainless Stainless design (shown) or in black or white with sleek, stainless steel towel bar handle



All Jenn-Air® dishwasher models are ENERGY STAR® rated and meet NSF Protocol (1997) for Sanitization and Cleaning Performance of Household Spray-Type Dishwashers.

## ENTERTAINING ESSENTIALS



- ### BUILT-IN 24" UNDER COUNTER BEVERAGE CENTER JUB248RBR
- TriZone Cooling System
  - 22 wine bottle capacity or 72-12 oz can capacity
  - LED Temperature Display
  - Euro-Style design (shown), black or Overlay design
- JUB248RBCX/JUB248LBCX**  
AVAILABLE IN LEFT HAND DOOR SWING JUB248LBR



- ### BUILT-IN 24" UNDER COUNTER REFRIGERATOR JUR248RBE
- Adjustable thermostat • 6.0 cu. ft. capacity • Automatic defrost
  - Euro-Style design (shown), black or Overlay design
- JUR248RBCX/JUR248LBCX**  
AVAILABLE IN LEFT HAND DOOR SWING JUR248LBE



- ### BUILT-IN UNDER COUNTER WINE CELLAR JUW248RBR
- Dual Zone temperature control system • 45-bottle capacity
  - Tinted UV-resistant thermal glass door • Reversible door
  - Euro-Style design (shown), black or Overlay design
- JUW248RBCX/JUR248LBCX**



- ### BUILT-IN UNDER COUNTER ICE MAKER JIM158RBR
- Control system with electronic sensors • Clear Cube™ system for clear, hard ice • 25-pound storage capacity • Reversible door
  - Euro-Style design (shown), black or Overlay design
- JIM158XBCX**



- ### BUILT-IN 27" DOUBLE DRAWER REFRIGERATOR JUD278RBE
- TriZone Cooling System
  - 5.3 cu. ft. capacity
  - Euro-Style design (shown) or Overlay design
- JUD278DBCX**



**Together we can make a sustainable difference.**

At Whirlpool Corporation, we're committed to being the building and design



professionals' go-to source for eco-efficient appliances needed to design, construct, operate and maintain green homes. We want to partner with you in developing designs that can make a sustainable difference.

**Serving the design professional.**

Whirlpool offers a number of complimentary services that benefit the design community. Our new

offering of 3D digital models for Google SketchUp which allows you to download Jenn-Air® products from the Google 3D Warehouse right into your CAD designs. You can also connect with Google Earth to place your 3D design on a jobsite to share with clients.

You can also access **online continuing education, CSI three-part specifications and**



**CAD details at** Sweets.com.

Professional courtesy appliance discounts for AIA, AIBD, NKBA and IIDA members' personal use are also available.



**To find out more, visit [insideadvantage.com/designers](http://insideadvantage.com/designers) or call 800-253-3977.**



Dimensions are for planning purposes only. For complete details, visit [jennair.com](http://jennair.com).  
Specifications subject to change without notice.

© Registered trademark/™Trademark of Whirlpool, U.S.A., KitchenAid, U.S.A., Jenn-Air, U.S.A., or Maytag Corporation or its related companies.

© 2007 Whirlpool Corporation. All rights reserved.

Printed in U.S.A.