

# EXECUTIVE LOCKERS AND BENCHES

**Potential of 9 LEED Credits Supported**

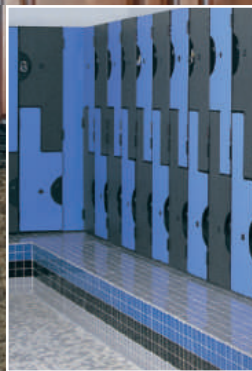
Materials & Resources: 4.1, 4.2, 5.1, 5.2, 6.0, 7.0  
Indoor Environmental Quality: 4.1, 4.2, 4.4

**FSC Certified Pure, FSC Mixed and FSC Recycled**

FSC Standard: FSC-STD-40-004 V2-0  
Certification Code: SCS-COC-002382

**FSC# SCS-COC-002382**

**GSA# 6S-27F-0019R**



## IMAGE 1000 SERIES

### FURNITURE QUALITY & ECONOMY GRADE

- Custom and Standard Designs
- Thermal-Fused Melamine
- 40 Standard Colors
- One Year Warranty

#### SPECIFICATIONS

Material: 48 lb. density, industrial grade particle board.

Assembly: Blunt joint and nail.

Finish: Thermal-fused low pressure melamine. Choose from 40 standard colors. Samples available upon request.

## IDEAL 1000 & 2000 SERIES

### FURNITURE QUALITY & FIRE RETARDANT

- Custom and Standard Designs
- Class II-B Fire Retardant
- Unlimited Color Selection
- Three Year Warranty
- Formica®, Wilsonart®, Nevamar®, Pionite®, Laminart®, Micarta® Finishes

#### SPECIFICATIONS

Material: Fire-retardant, formaldehyde-free, 48 lb. industrial grade particle board.

Assembly: Blunt joint and nail.

Finish: Plastic laminate, class II-B, fire-retardant, water resistant, NEMA-LD-1 vertical grade .028" thick high pressure plastic laminate exposed.

### IMPROVED PRODUCT

## MED-X 1000 & 2000 SERIES

### WATER RESISTANT & FIRE RETARDANT

- Custom and Standard Designs
- Class II-B Fire Retardant
- Unlimited Color Selection
- Three Year Warranty
- ASTM Six Cycle Tested Core Materials

#### SPECIFICATIONS

Material: Woodstalk Gold MR Fiberboard. Exceeds ANSI A208, 1-1999 M3 low fuming resin according to ASTM E 1333-96, and less than .01 ppm formaldehyde emissions.

Assembly: Blunt joint and nail.

Finish: Plastic laminate, class II-B, fire-retardant, water resistant, NEMA-LD-1 vertical grade .028" thick high pressure plastic laminate exposed.

## SECURA 1000 & 2000 SERIES

### COIN COLLECTION LOCKERS

- Custom and Standard Designs
- Class II-B Fire Retardant
- Unlimited Color Selection
- One to Six Coin Operation
- Common Collection Tube
- Security Vault
- Three Year Warranty

#### SPECIFICATIONS

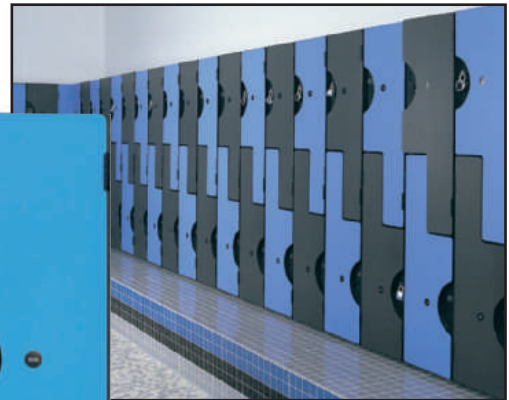
Material: Fire-retardant, formaldehyde-free, 48 lb. industrial grade particle board.

Assembly: Blunt joint and nail.

Finish: Plastic laminate, class II-B, fire-retardant, water resistant, NEMA-LD-1 vertical grade .028" thick high pressure plastic laminate exposed.



Mission Valley YMCA, Ontario, California



Fitness Center, California



Executive Style Two Tier "L" lockers have all the design versatility you are looking for. Select a locker configuration from our many standard designs or design your own.



#L42

#L48

#L54

#L60

Visit our website at [idealockers.com](http://idealockers.com) for more details on all of our locker room products. You can download spec sheets, get an online quote, view more photos, or send us your specific requests. To speak to a locker specialist, call us toll free at 1-800-88-IDEAL.

# PLASTIC LAMINATE LOCKERS

*Ideal laminated doors, modern and economical, select one or several colors, textures, patterns, metallic or wood-grain plastic laminates as manufactured by Formica®, Wilsonart®, Nevamar®, Laminart®, Pionite® and Micarta®. Specify colors and alternate your selections by the frame for vertical stripes or by the door for a checkerboard-type appearance. Our laminated door construction has been tested and awarded UL Class B(II) fire rating. When specifying, use (PL) to designate plastic laminate doors or substitute the manufacturer's system such as WA D302-6 Canary.*



White Vinyl Interior w/Rear Panel Venting

SECURA 1000 — Fitness Center, Rancho Cucamonga, California



## STANDARD DIMENSIONS

Width: 12" or 16"    Depth: 18" or 20"    Height: 72", 78", or 84"

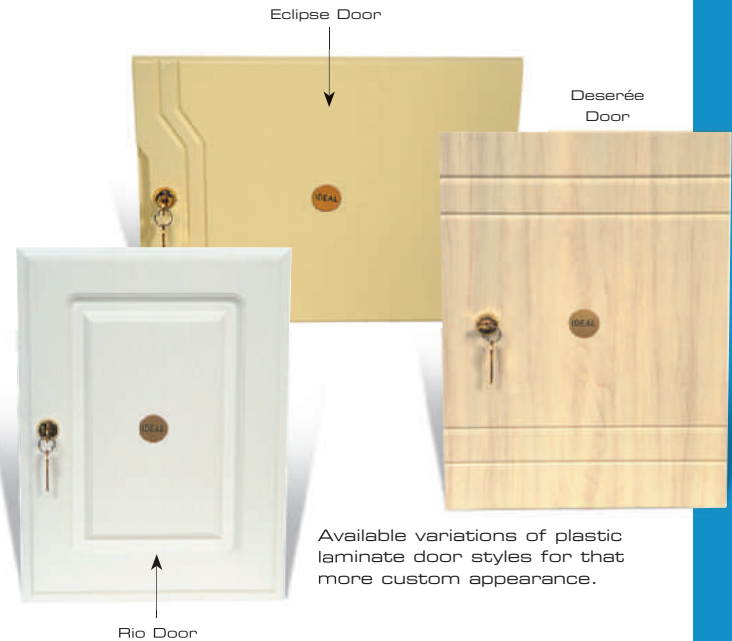
## IDEAL 1000 SERIES:

Poly Vinyl Edging; Black Exposed Knuckle Hinges; and Recessed Padlock Hasps

## IDEAL 2000 SERIES:

Self-Edging; Euro-Concealed Hinges; Keyed Locks

IDEAL 1000 SERIES — "L" lockers showing their versatility with white vinyl interiors.



Available variations of plastic laminate door styles for that more custom appearance.



IDEAL 1000 #L42 — Metro Physical Therapy, Omaha, Nebraska



1-800-88-IDEAL  
idealockers.com

# PLASTIC LAMINATE LOCKERS

CONTINUED

**NEW PRODUCT**

## DURA-FR 1000 & 2000 SERIES

### FIRE RATED PLASTIC LAMINATE LOCKERS

- Custom and Standard Designs
- Class I-A Fire-Retardant
- Unlimited Color Selection
- Fulfills the requirements of CPAQ1-02
- Complies with HUD 24 CFR 3280 for Formaldehyde Emission Limit
- Three Year Warranty

#### SPECIFICATIONS

**Material:** Duraflake FR particleboard UL approved Class I-A fire-retardant substrate for all components.

**Assembly:** Blunt joint and nail.

**Finish:** Plastic laminate, class I-A, fire-retardant and scratch resistant, NEMA-LD-1 vertical grade .032" thick high pressure plastic laminate on exposed surfaces.

## EPICENTER 1000 SERIES

### ATHLETIC LOCKERS

- Custom and Standard Designs
- Class II-B Fire Retardant
- Unlimited Color Selection
- Available in Formica<sup>®</sup>, Wilsonart<sup>®</sup>, Nevamar<sup>®</sup>, Laminart<sup>®</sup>, Pionite<sup>®</sup> and Micarta<sup>®</sup> Finishes
- Three Year Warranty

#### SPECIFICATIONS

**Material:** Fire-retardant, formaldehyde-free, industrial grade particle board.

**Assembly:** Dowel and glue joining.

**Finish:** Plastic laminate, class II-B, fire-retardant, water resistant, NEMA-LD-1 vertical grade .028" thick high pressure plastic laminate exposed.

## CUBBIES SERIES

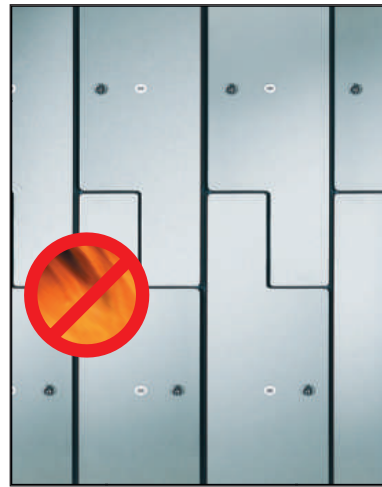
### FURNITURE QUALITY

For short term storage of non-valuable personal belongings in areas such as aerobic rooms, reception areas or lobbies, weight rooms, etc. Our cubbies include water-resistant, fire-retardant high-pressure plastic laminate on all exposed surfaces and are available in standard frame sizes of 12" x 18" x 72" with either three, four, five or six storage spaces or custom sizes to satisfy your facilities requirements.

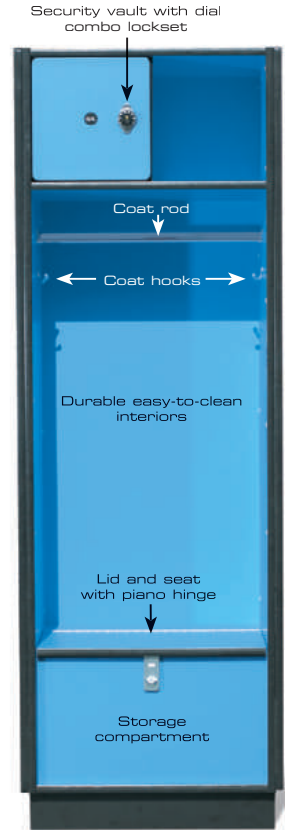
## WALLET LOCKERS

### FURNITURE QUALITY

Small, durable and attractive, our wallet lockers or valuables vaults are available in your choice of decorative, high-pressured plastic laminate with either keyed or dial combination locksets. Set them on your countertop or hang them on the wall. The wallet lockers are custom built to your specific requirements.



DURA-FR 1000 SERIES



EPICENTER 1000 SERIES



CUBBIES SERIES



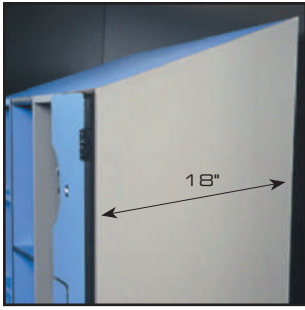
FIVE TIER WALLET LOCKER with keyed locks.



TEN TIER SNEAKER LOCKER with keyed locks.

Visit our website at [idealockers.com](http://idealockers.com) for more details on all of our locker room products. You can download spec sheets, get an online quote, view more photos, or send us your specific requests. To speak to a locker specialist, call us toll free at 1-800-88-IDEAL.

Single End Panel  
with Sloped Top



Single End Panel  
with 20° Sloped Top



# FINISHING MATERIALS

*Designed and constructed for beauty and durability, Ideal has added optional items along with our standard items to better satisfy our customer's needs. Add that extra shelf, swing-out mirror, or even a security vault — the amenities are numerous.*



Epicenter  
Athletic  
Locker

Finished  
Base

L-60

L-48

L-54

Filler

Cubby "F"

Cubby "D"

Cubby "C"

Single End  
Panel

18"

18"



Double End Panel  
with Sloped Tops

36"

Double End Panel  
without Sloped Tops



36"



1-800-88-IDEAL  
[idealockers.com](http://idealockers.com)

## IMPERIAL 1000 SERIES

### FURNITURE QUALITY with VENEER DOORS

- Custom and Standard Designs
- Plain Sliced
- Quarter Sawn
- Rift Cut
- Book or Slip Matched
- Three Year Warranty

#### SPECIFICATIONS

Material: 1/32" thickness select natural wood as specified. Grade AA on PB core.

Assembly: Blunt joint and nail.

Finish: Premium grade 3 coats clear satin, sanding between coats. Stains to match samples: custom or standard.

#### FINISHES

Red or White Oak, Maple, Birch, Cedar, Elm, Knotty Pine, Teak, Mahogany, Walnut, Douglas Fir, Cherry, or Ash (limited to nature's resources).

## IMPERIAL 2000 SERIES

### FURNITURE QUALITY with SOLID DOORS

- Custom and Standard Designs
- Raised Panel Design
- Genuine Louver
- Recess Panel
- Finger Joint
- Three Year Warranty

#### SPECIFICATIONS

Material: 3/4" kiln dried solid select natural wood as specified.

Assembly: Blunt joint and nail.

Finish: Premium grade 3 coats clear satin, sanding between coats. Stains to match samples: custom or standard.

#### FINISHES

Red or White Oak, Maple, Birch, Cedar, Elm, Knotty Pine, Teak, Mahogany, Walnut, Douglas Fir, Cherry, or Ash (limited to nature's resources).

## NATURAL WOOD LOCKERS

*Ideal's Natural Wood Veneers or Solids for Elegance. We have the widest selection of natural woods possible: i.e., red or white oak; cedar; birch; cherry; Philippine, Honduras, or African mahogany; teak; maple; walnut; knotty pine; douglas fir; and ash. Most will be available in various cuts such as plain sliced, rotary cut, quarter sawn, etc. Specify a stain or finish. When specifying, use (WV) wood veneer, (RP) raised panel, (BB) butcher block, or (LO) louver and include the wood species.*



Fitness Center, Ontario, California



#### STANDARD DIMENSIONS

Width: 12" or 16"

Depth: 18" or 20"

Height: 72", 78", or 84"

Louvered Door Panel

Wood Door with Full Length Finger Pull

Liverpool Raised Panel Door

Cathedral Door



Available variations of natural wood door styles or customize to designers specifications.

Visit our website at [idealockers.com](http://idealockers.com) for more details on all of our locker room products. You can download spec sheets, get an online quote, view more photos, or send us your specific requests. To speak to a locker specialist, call us toll free at 1-800-88-IDEAL.

# ACCESSORIES

*Designed and constructed for beauty and durability,  
Ideal has added optional items along with our  
standards to better satisfy our customer's needs. Add  
that extra shelf, swing-out mirror, or even a security  
vault — the amenities are numerous.*



COAT ROD made of 3/4" diameter nickel plated steel.



MINI-SHELF 3/4" thick.



SIDE MOUNTED COAT HOOK made of die cast aluminum & finished with "ball" ends to eliminate snagging.



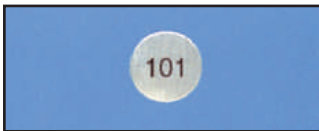
COAT HOOK same as above except ceiling hung.



SHOE SHELVES



NAME PLATE personalized for that extra added effect.



NUMBERED DISK to permit easy locker identification.



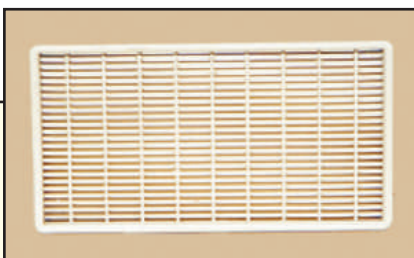
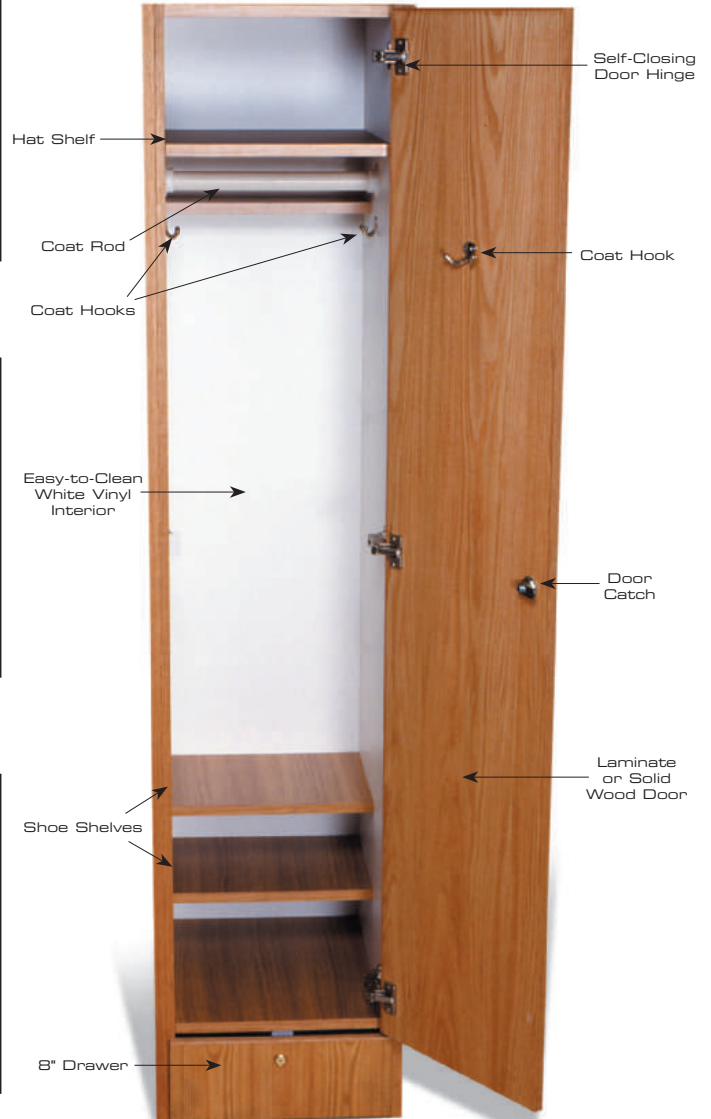
SECURITY VAULT with a dial combination lockset.



MIRROR, TRAY and BAR interior mounted with an easy swing out bar.



STORAGE COMPARTMENT roll-out drawer with key control lock.



VENTILATION GRILL to assist in air circulation.

## BENCHES



### ONTARIO BENCH

Sturdy and modern in appearance, all plastic laminate finished design to match locker lockers. Available in all standard sizes and ADA handicapped accessible.



### ECONO BENCH

Ideal's most popular bench style is available with plastic laminate tops and poly vinyl edging to match our lockers. Black powder-coated legs are either movable tri-legs or permanent pedestals.



### WATERFALL BENCH

Edging is completed with 1" x 3" butcherblock in either red oak or maple. Inlay is fire retardant, water resistant, scratch resistant, and high pressure post forming plastic laminate. Standard clear satin finish and custom stains are available.



### FAIRBANKS BENCH

Attractive and modern in appearance, our Fairbanks bench comes with legs of 4" wide red oak veneer edged with red oak butcherblock. Seat is completed with coordinated carpet. Finished with three coats of clear lacquer for added durability. Carpet not included.



### COUNTRY CLUB BENCH

Mitered 4" plastic laminate legs with a carpet wrapped seat to match our laminate lockers. Construction of 1/2" solid maple with radius corners is used for interior structure. Standard clear satin finish. Legs are finished with matching plastic laminate. Carpeting not included.



### LOS ANGELES BENCH

Butcherblock legs with a carpet wrapped seat enhances that designer look. Legs are made of 1 1/4" thick solid butcherblock either in red oak or maple. Standard clear satin finish and custom stains are available. Carpeting not included.



### BUTCHERBLOCK WITH INLAY BENCH

A beautiful bench to match plastic laminate lockers and add the luxury of natural wood. The laminate is inlaid with 3/4" natural red oak or maple butcherblock uprights. Standard clear satin finish and custom stains.



### BUTCHERBLOCK BENCH

Made of either red oak or maple butcherblock. 1 1/4" thickness available with stained and clear satin finish. The Butcherblock bench can be ordered with T-legs (shown) or 1 1/4" thick butcherblock legs.



### VENTWOOD WITH T-LEGS BENCH

Durable, yet aesthetically appealing; manufactured with clear vertical grain douglas fir slats, oak doweling, clear satin finish, and black powder coated T-legs.

## LEGS

Black powder coated Tri-legs, T-legs, and Permanent Pedestal bases with lasting durability and beauty.



T-Leg



Tri-Leg



Permanent Pedestal Base



Econo Stool



## STOOLS

Ideal offers the widest selection of matching stools available today. Like our benches, they are designed to complement your locker finish while enduring cruel and unusual punishment. Stools are available in 12" or 14" diameters and are 16" high in either plastic laminate or natural wood with black powder coated legs.



Delux Stool

## WARRANTY

We guarantee our products to be free of defects limited to three years from original date of purchase on workmanship and materials used during construction.



P.O. Box 4090 • Ontario, California 91761 • Toll Free: 1-800-88-IDEAL  
Phone: 909-988-2871 • Fax: 909-988-7263 • Email: idealocker@aol.com • idealockers.com