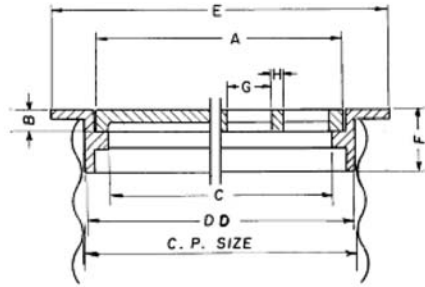


■ Note: When specifying/ordering grates, refer to “Choosing the proper inlet grate” on pages 117-118.
 For a complete listing of FREE OPEN AREAS and WEIR PERIMETERS of all NEENAH grates, refer to pages 306-311.

R-5900 to R-5901 Series Slab Frame, Grate or Lid

Heavy Duty

| CATALOG NUMBER | GRATE TYPE | SQ. FT. OPEN | WEIR PERIMETER LINEAL FEET |
|----------------|------------|--------------|----------------------------|
| R-5901-A | G | 0.2 | 2.7 |
| R-5901-B | G | 0.3 | 3.5 |
| R-5901-C | G | 0.5 | 4.3 |
| R-5901-D | G | 0.7 | 4.8 |
| R-5901-E | G | 1.1 | 5.8 |
| R-5901-F | G | 1.6 | 6.6 |
| R-5901-G | G | 2.0 | 7.4 |
| R-5901-H | G | 4.2 | 8.9 |
| R-5901-J | G | 3.7 | 10.5 |
| R-5901-K | G | 4.8 | 12.1 |



Sized to fit snugly into opening of corrugated pipe or similar piping.

Additional anchorage to metal pipe may be accomplished by drilling holes in the sleeve or barrel portion of the frame and bolting the frame in place. Frames can be furnished drilled for this purpose on special order.

For Bolted units, see **R-6461-2 Series**. For flange-down units, see **R-1792 Series**.

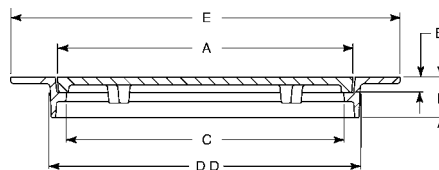
Dimensions in inches

| Catalog No. Solid Lid | Catalog No. Open Grate | Pipe Size | A | B | C | DD | E | F | G | H |
|-----------------------|------------------------|-----------|--------|-------|--------|--------|--------|---|--------|-----|
| R-5900-A | R-5901-A | 12 | 10 1/4 | 1 1/2 | 8 1/2 | 11 1/2 | 14 1/2 | 4 | 1 | 7/8 |
| R-5900-B | R-5901-B | 15 | 13 1/4 | 1 1/2 | 11 1/2 | 14 1/2 | 17 1/2 | 4 | 1 | 1 |
| R-5900-C | R-5901-C | 18 | 16 1/4 | 1 1/2 | 14 1/2 | 17 1/2 | 20 1/2 | 4 | 1 | 7/8 |
| R-5900-D | R-5901-D | 20 | 18 1/4 | 1 1/2 | 16 1/2 | 19 1/2 | 22 1/2 | 4 | 1 1/8 | 1 |
| R-5900-E | R-5901-E | 24 | 22 1/4 | 1 1/2 | 20 1/2 | 23 1/2 | 26 1/2 | 4 | 1 1/8 | 1 |
| R-5900-F | R-5901-F | 27 | 25 1/4 | 1 1/2 | 23 1/2 | 26 1/2 | 29 1/2 | 4 | 1 1/8 | 3/4 |
| R-5900-G | R-5901-G | 30 | 28 1/4 | 1 1/2 | 26 3/8 | 29 1/2 | 32 1/2 | 4 | 1 | 7/8 |
| R-5900-H * | R-5901-H | 36 | 34 1/4 | 1 1/2 | 32 1/2 | 35 1/2 | 38 1/2 | 4 | 1 | 1 |
| R-5900-J | R-5901-J | 42 | 40 | 1 1/2 | 38 1/2 | 41 1/2 | 44 1/2 | 4 | 1 | 1 |
| R-5900-K | R-5901-K | 48 | 46 1/8 | 1 1/2 | 44 1/2 | 47 1/2 | 50 1/2 | 4 | 1 1/16 | 1 |

* Available with removable center lid, see R-1586.

R-5915 Series Traffic Pullbox Frame, Lid

Heavy Duty

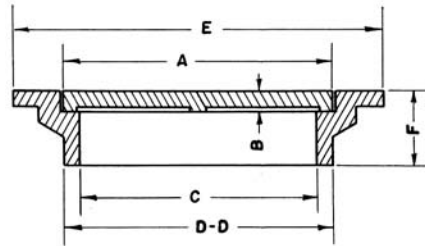
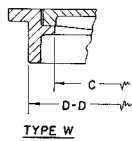
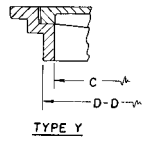


Dimensions in inches

| Catalog No. | A | B | C | DD | E | F |
|-------------|--------|-------|--------|--------|----|---|
| R-5915-B | 13 1/4 | 1 1/2 | 11 1/2 | 14 1/2 | 20 | 4 |
| R-5915-C | 16 | 1 1/2 | 14 1/4 | 17 1/4 | 23 | 4 |
| R-5915-E | 22 | 1 1/2 | 20 1/2 | 23 3/8 | 30 | 4 |
| R-5915-G | 28 1/4 | 1 1/2 | 26 3/8 | 29 5/8 | 37 | 4 |

**R-6001 to R-6080 Series
Manhole Frame, Solid Lid**

Light Duty



Illustrating R-6020

The manhole covers shown here, for off-the-street traffic, are specifically for use on cisterns, coal holes, wells, pumps or for inspection openings.

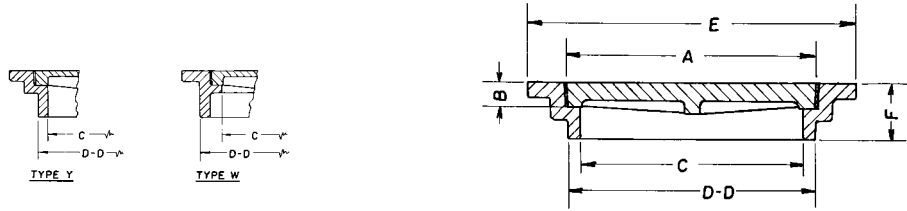
Lids are furnished standard with open type pickholes. However, they can be supplied with various types of lift handles. Fastening devices are available on special order.

Dimensions in inches

| Catalog No. | A | B | C | DD | E | F | Frame Type |
|-------------|--------|-----|--------|--------|--------|-------|------------|
| R-6001 | 6 | 1 | 5 | 6 | 10 | 3 1/2 | Y |
| R-6003 | 9 | 1 | 8 | 9 | 12 | 2 1/2 | Y |
| R-6005 | 12 | 1 | 11 | 12 | 14 3/4 | 2 1/2 | Y |
| R-6006 | 13 | 3/4 | 11 3/4 | 14 | 17 | 2 1/2 | W |
| R-6007 | 14 | 3/4 | 12 | 15 | 20 | 2 1/2 | W |
| R-6008 | 16 | 3/4 | 15 | 16 | 20 1/4 | 2 1/2 | Y |
| R-6010 | 18 | 1/2 | 16 1/2 | 20 | 22 1/2 | 4 | W |
| R-6011 | 18 | 1/2 | 17 | 18 | 22 1/4 | 2 1/2 | Y |
| R-6012 | 20 1/2 | 5/8 | 18 | 22 1/2 | 24 | 2 1/2 | W |
| R-6020 | 21 1/2 | 1 | 20 | 24 1/2 | 27 3/8 | 4 | W |
| R-6034 | 23 1/2 | 1/2 | 22 | 23 1/2 | 26 1/2 | 3 | Y |
| R-6040 | 24 | 3/4 | 22 | 23 1/4 | 30 | 3 1/2 | Y |
| R-6044 | 25 | 1 | 22 | 23 1/4 | 28 | 6 | Y |
| R-6044-1 | 23 3/4 | 3/4 | 22 1/2 | 25 | 29 1/2 | 4 | W |
| R-6044-A | 25 1/2 | 1/2 | 24 | 25 1/4 | 30 1/2 | 4 | Y |
| R-6070 | 26 5/8 | 3/4 | 25 | 26 1/4 | 31 | 4 | Y |
| R-6077 | 31 3/4 | 3/4 | 30 | 31 1/2 | 36 1/2 | 6 | Y |
| R-6077-A | 31 3/4 | 3/4 | 30 | 31 1/2 | 36 1/2 | 3 1/2 | Y |
| R-6080 | 33 1/2 | 3/4 | 32 | 33 | 37 | 4 | Y |

**R-6013 to R-6099 Series
Manhole Frame, Solid Lid**

Heavy Duty



Illustrating R-6030

Lids are available with lift handles or fastening devices if specified.

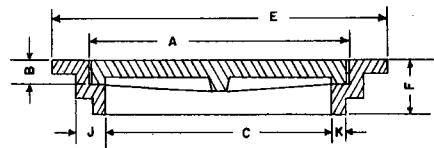
Dimensions in inches

| Catalog No. | A | B | C | DD | E | F | Frame Type |
|-------------|--------|-------|--------|--------|--------|-------|------------|
| R-6013 | 6 1/2 | 1 1/4 | 5 1/2 | 6 3/4 | 10 | 2 1/2 | Y |
| R-6014 * | 9 | 1 | 8 | 9 | 12 | 2 1/2 | Y |
| R-6016 * | 14 | 1 1/4 | 12 | 13 | 18 | 3 | Y |
| R-6017 | 17 | 1 1/4 | 15 | 16 | 21 | 4 | Y |
| R-6017-A | 18 | 1 1/4 | 16 | 17 | 22 | 4 1/2 | Y |
| R-6018 | 21 | 2 1/2 | 18 | 20 | 27 1/2 | 5 | Y |
| R-6019 * | 22 3/4 | 1 3/4 | 20 | 23 | 25 | 4 1/2 | Y |
| R-6021 | 23 | 1 1/4 | 20 | 22 | 29 3/4 | 4 | Y |
| R-6030 | 23 | 1 3/4 | 21 | 22 3/4 | 30 | 4 | Y |
| R-6033 | 23 | 1 3/4 | 21 | 22 3/4 | 30 | 4 | Y |
| R-6035 | 23 | 1 3/4 | 21 | 22 3/4 | 30 | 8 | Y |
| R-6041 | 24 | 1 5/8 | 22 | 25 1/4 | 30 | 4 | W |
| R-6041-A | 24 | 1 5/8 | 22 | 25 1/4 | 30 | 6 | W |
| R-6041-B | 24 | 1 5/8 | 22 | 25 1/4 | 30 | 8 | W |
| R-6050 | 27 | 1 1/4 | 23 1/2 | 25 1/2 | 33 1/2 | 4 | Y |
| R-6060 | 26 | 1 5/8 | 24 | 27 | 36 | 5 | W |
| R-6065 | 25 3/8 | 1 3/4 | 23 7/8 | 26 | 30 | 6 | Y |
| R-6065-A | 25 3/8 | 1 3/4 | 23 7/8 | 26 1/8 | 30 1/4 | 8 | Y |
| R-6066 | 27 | 2 1/2 | 24 | 26 | 33 1/2 | 5 | Y |
| R-6067 * | 27 | 2 1/2 | 24 | 26 | 33 1/2 | 5 | Y |
| R-6074 | 28 1/2 | 1 1/4 | 26 1/2 | 27 1/2 | 35 | 3 1/2 | Y |
| R-6075 | 29 | 1 3/4 | 27 | 29 | 35 | 6 | Y |
| R-6078 | 32 3/8 | 2 | 30 | 32 1/2 | 39 1/2 | 6 | Y |
| R-6095 * | 38 | 1 1/2 | 36 | 38 | 49 | 4 1/2 | Y |
| R-6099 | 50 1/2 | 1 | 48 | 49 1/2 | 54 | 6 | Y |

* Furnished with Platen lid.

**R-6052 Series
Manhole Frame, Solid Lid, U.S Government Standard**

Heavy Duty



Illustrating R-6052-G

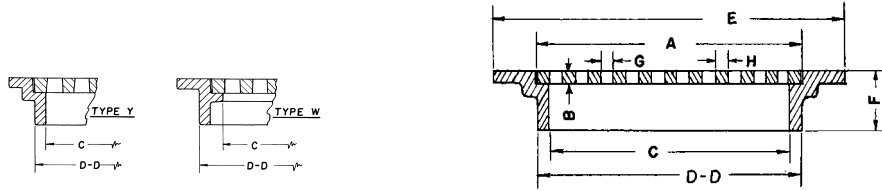
For Frame/Grate alternatives, see the R-2565 Series.

Dimensions in inches

| Catalog No. | A | B | C | E | F | J | K |
|-------------|--------|-------|--------|--------|---|-------|-----|
| R-6052-A | 21 | 2 1/2 | 18 | 27 1/2 | 5 | 2 7/8 | 1 |
| R-6052-C | 23 | 1 1/4 | 20 | 29 3/4 | 4 | 2 1/2 | 1 |
| R-6052-D | 27 | 1 1/4 | 23 1/2 | 33 1/2 | 4 | 2 1/4 | 3/4 |
| R-6052-G | 27 | 2 1/2 | 24 | 33 1/2 | 5 | 2 7/8 | 1 |
| R-6052-H | 29 | 1 3/4 | 27 | 35 | 6 | 2 7/8 | 1 |
| R-6052-J | 32 3/8 | 2 | 30 | 39 1/2 | 6 | 2 7/8 | 1 |

■ Note: When specifying/ordering grates, refer to "Choosing the proper inlet grate" on pages 117-118.
 For a complete listing of FREE OPEN AREAS and WEIR PERIMETERS of all NEENAH grates, refer to pages 306-311.

**R-6110 to R-6137 Series
 Catch Basin Frame, Grate**



Illustrating R-6115

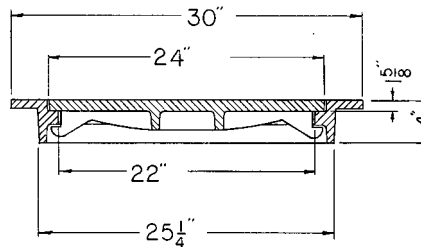
Dimensions in inches

| Catalog No. | A | B | C | DD | E | F | G | H | Frame Type |
|-------------------|--------|-------|--------|--------|--------|-------|-------|-----|------------|
| Heavy Duty | | | | | | | | | |
| R-6110 | 21 | 2 1/2 | 18 | 20 | 27 1/2 | 5 | 1 3/8 | 1 | Y |
| R-6111 | 23 | 1 1/4 | 20 | 22 | 29 3/4 | 4 | 1 3/8 | 1 | Y |
| R-6112 | 23 | 1 3/4 | 21 | 22 3/4 | 30 | 4 | 1 1/2 | 1 | Y |
| R-6113 | 24 | 1 5/8 | 22 | 25 1/4 | 30 | 4 | 3/4 | 1 | W |
| R-6114 | 27 | 1 1/4 | 23 1/2 | 25 1/2 | 33 1/2 | 4 | 1 1/2 | 1 | Y |
| R-6115 | 27 | 2 1/2 | 24 | 26 | 33 1/2 | 5 | 1 1/2 | 1 | Y |
| R-6116 | 29 | 1 3/4 | 27 | 29 | 35 | 6 | 1 | 1 | Y |
| R-6117 | 32 3/8 | 2 | 30 | 32 1/2 | 39 1/2 | 6 | 1 1/2 | 1 | Y |
| R-6118 | 38 | 1 1/2 | 36 | 38 | 49 | 4 1/2 | 1 | 1 | Y |
| Light Duty | | | | | | | | | |
| R-6130 | 20 1/2 | 5/8 | 18 | 22 1/2 | 24 | 2 1/2 | 1 | 1 | W |
| R-6131 | 21 1/2 | 1 | 20 | 23 1/2 | 27 | 4 | 1/2 | 3/4 | W |
| R-6132 | 24 | 3/4 | 22 | 23 1/4 | 30 | 3 1/2 | 1/2 | 1/2 | Y |
| R-6133 | 25 | 1 | 22 | 23 1/4 | 28 | 6 | 1/2 | 1 | Y |
| R-6134 | 26 5/8 | 3/4 | 25 | 26 1/4 | 31 | 4 | 7/8 | 3/4 | Y |
| R-6136 | 31 3/4 | 3/4 | 30 | 31 1/2 | 36 1/2 | 6 | 1 1/4 | 1 | Y |
| R-6137 | 33 1/2 | 3/4 | 32 | 33 | 37 | 4 | 1 1/4 | 1 | Y |

| CATALOG NUMBER | GRATE TYPE | SQ. FT. OPEN | WEIR PERIMETER LINEAL FEET |
|----------------|------------|--------------|----------------------------|
| R-6110 | G | 0.9 | 5.5 |
| R-6111 | G | 1.2 | 6.0 |
| R-6112 | G | 1.3 | 6.0 |
| R-6113 | G | 0.9 | 6.3 |
| R-6114 | G | 1.8 | 7.0 |
| R-6115 | G | 1.6 | 7.1 |
| R-6116 | G | 1.9 | 7.6 |
| R-6117 | G | 2.4 | 8.5 |
| R-6118 | G | 2.6 | 9.9 |
| R-6130 | G | 0.8 | 5.4 |
| R-6131 | G | 1.0 | 5.6 |
| R-6132 | G | 1.3 | 6.3 |
| R-6133 | G | 1.3 | 6.5 |
| R-6134 | G | 1.5 | 6.9 |
| R-6136 | G | 2.5 | 8.3 |
| R-6137 | G | 2.7 | 8.8 |

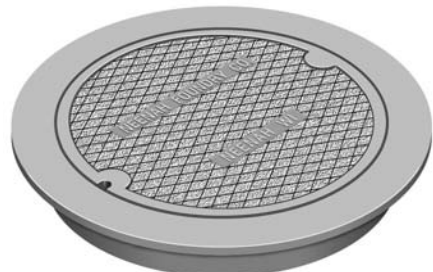
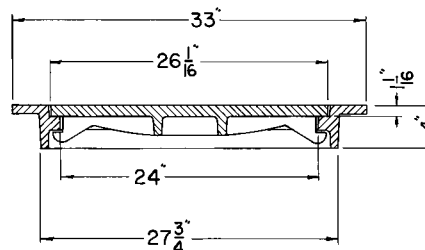
**R-6140
 Manhole Frame, Lid with Type F Lock**

Heavy Duty



**R-6141
 Manhole Frame, Lid with Type F Lock**

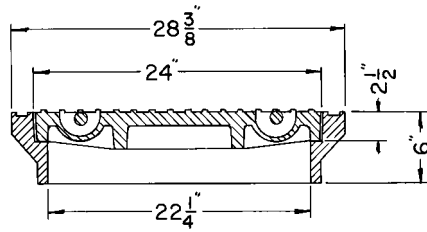
Heavy Duty



ACCESS &
 HATCH &
 COVERS
 11

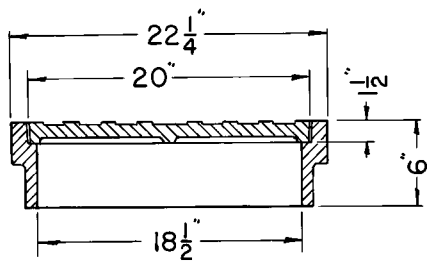
R-6142
Manhole Frame, Lid

Heavy Duty



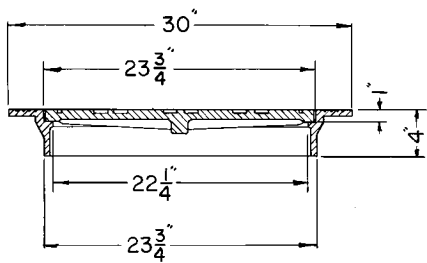
R-6143
Manhole Frame, Lid

Heavy Duty



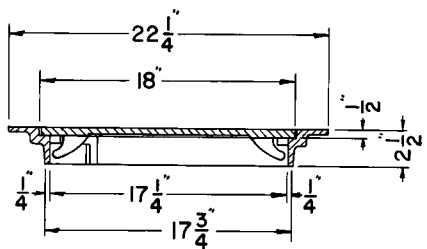
R-6144
Manhole Frame, Lid

Light Duty



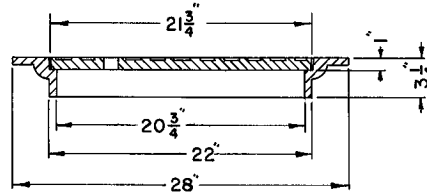
R-6145
Manhole Frame, Lid with Type F Lock

Light Duty



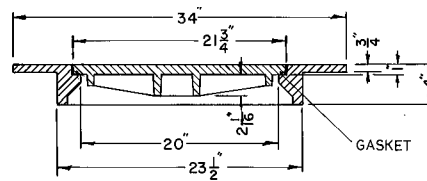
R-6146
Manhole Frame, Lid

Heavy Duty



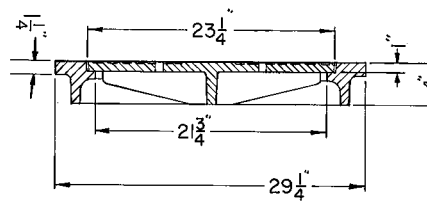
R-6147
Manhole Frame, Self-Sealing Lid

Heavy Duty



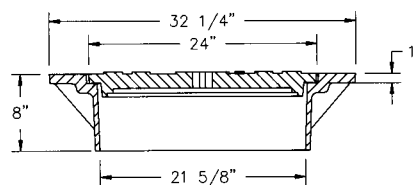
R-6148
Manhole Frame, Vented Lid

Heavy Duty



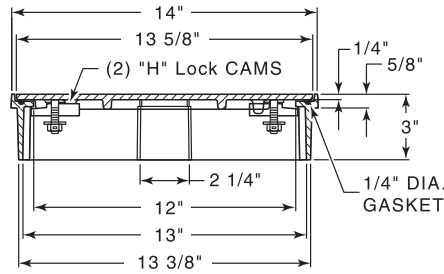
R-6149
Manhole Frame, Lid

Heavy Duty



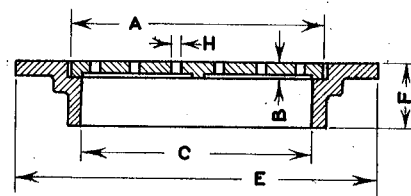
**R-6151
Manhole Frame, Lid**

Light Duty



**R-6310 Series
Manhole Frame, Vented Lid**

Light Duty



Illustrating R-6310-G1

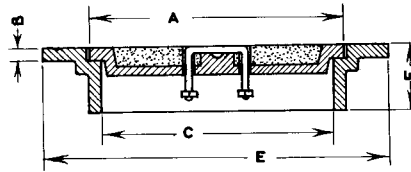
Suitable for garages, bottling plants, laundries, service stations and industrial building applications of all kinds.

| Dimensions in inches | | | | | | | |
|----------------------|--------|-----|--------|--------|-------|-----|------------|
| Catalog No. | A | B | C | E | F | H | # of Vents |
| R-6310-A | 9 | 1 | 8 | 12 | 2 1/2 | 1/2 | 6 |
| R-6310-B | 13 | 3/4 | 11 3/4 | 17 | 2 1/2 | 3/4 | 6 |
| R-6310-C | 16 | 3/4 | 15 | 20 1/4 | 2 1/2 | 1 | 12 |
| R-6310-D | 18 | 1/2 | 16 1/2 | 22 1/2 | 4 | 3/4 | 8 |
| R-6310-E | 20 1/2 | 5/8 | 18 | 24 | 2 1/2 | 1/2 | 24 |
| R-6310-F | 24 | 3/4 | 22 | 30 | 3 1/2 | 3/4 | 18 |
| R-6310-G1 | 26 5/8 | 3/4 | 25 | 31 | 4 | 5/8 | 20 |
| R-6310-H | 31 3/4 | 3/4 | 30 | 36 1/2 | 6 | 1 | 24 |
| R-6310-H1 | 31 3/4 | 3/4 | 30 | 36 1/2 | 3 1/2 | 1 | 24 |

■ Note: When specifying/ordering grates, refer to "Choosing the proper inlet grate" on pages 117-118.
 For a complete listing of FREE OPEN AREAS and WEIR PERIMETERS of all NEENAH grates, refer to pages 306-311.

R-6320 Series
Manhole Frame, Lid for Concrete, Asphalt or Terrazzo Fill

Light Duty

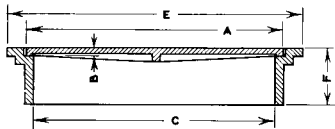


Furnished standard with steel lift handle. Also available with top surface of frame and lid machine finished. Bronze lift handle available.

| Catalog No. | Dimensions in inches | | | | |
|-------------|----------------------|-----|--------|--------|-------|
| | A | B | C | E | F |
| R-6320-A | 9 | 1 | 8 | 12 | 2 1/2 |
| R-6320-B | 13 | 3/4 | 11 3/4 | 17 | 2 1/2 |
| R-6320-D | 18 | 1/2 | 16 1/2 | 22 1/2 | 4 |
| R-6320-E | 20 1/2 | 5/8 | 18 | 24 | 2 1/2 |
| R-6320-F | 21 1/2 | 1 | 20 | 27 | 4 |
| R-6320-G | 24 | 3/4 | 22 | 30 | 3 1/2 |
| R-6320-H | 26 5/8 | 3/4 | 25 | 31 | 4 |

R-6350 to R-6352 Series
Manhole Frame, Solid/Vented/Grated Cover

Light Duty



Illustrating R-6352-E

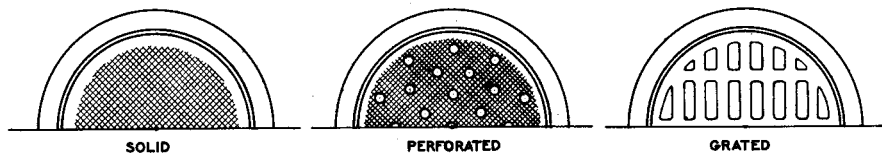


Illustrating R-6350-G

| CATALOG NUMBER | GRATE TYPE | WEIR PERIMETER | |
|----------------|------------|----------------|-------------|
| | | SQ. FT. OPEN | LINEAL FEET |
| R-6352-A | G | 0.4 | 3.4 |
| R-6352-B | G | 0.8 | 4.2 |
| R-6352-D | G | 0.7 | 4.9 |
| R-6352-E | G | 0.8 | 5.5 |
| R-6352-G | G | 1.3 | 6.5 |

These covers are used extensively by plumbers and contractors for inside use. Note that covers are adaptable for use with clay tile catch basin or sub-construction, frames to fit inside of and flush with top of bell.

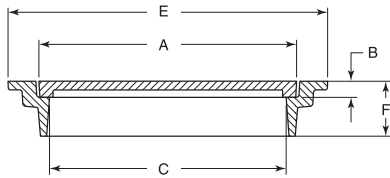
| Catalog No. Solid | Catalog No. Vented | Catalog No. Grated | Dimensions in inches | | | | | Pipe Size |
|-------------------|--------------------|--------------------|----------------------|-----|----|--------|-------|-----------|
| | | | A | B | C | E | F | |
| R-6350-A | | R-6352-A | 13 | 1/2 | 12 | 15 | 2 1/2 | 12 |
| R-6350-B | R-6351-B | R-6352-B | 16 | 3/4 | 15 | 20 1/4 | 2 1/2 | 15 |
| R-6350-C | | | 18 | 1/4 | 17 | 21 | 3 | 18 |
| R-6350-D | R-6351-D | R-6352-D | 19 | 1/2 | 18 | 21 | 3 | 18 |
| R-6350-E | R-6351-E | R-6352-E | 21 | 1/2 | 20 | 23 | 3 | 20 |
| R-6350-G | R-6351-G | R-6352-G | 25 | 1/2 | 24 | 27 | 3 | 24 |



■ Note: When specifying/ordering grates, refer to "Choosing the proper inlet grate" on pages 117-118.
 For a complete listing of FREE OPEN AREAS and WEIR PERIMETERS of all NEENAH grates, refer to pages 306-311.

R-6400 Series Manhole Frame, Solid or Grated Cover

Heavy Duty



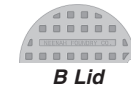
Illustrating R-6400-DS



Illustrating R-6400-BO

| CATALOG NUMBER | GRATE TYPE | SQ. FT. OPEN | WEIR PERIMETER LINEAL FEET |
|----------------|------------|--------------|----------------------------|
| R-6400-AO | G | 0.3 | 3.1 |
| R-6400-BO | G | 0.8 | 5.0 |
| R-6400-CO | G | 1.8 | 7.0 |
| R-6400-DO | G | 1.2 | 7.6 |

Suitable for heavy traffic. May be used for handholes, equipment covers, etc. on bridge or highway construction.



B Lid

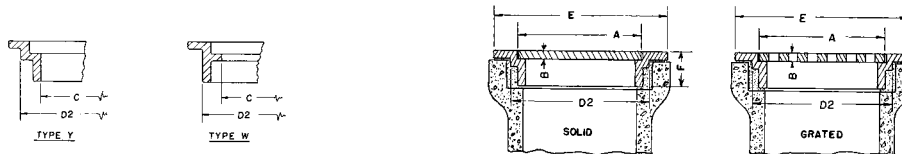


C Lid

| Dimensions in inches | | | | | | | | | | |
|-----------------------|----------|------------------------|------------|--------|-------|--------|--------|---|-------|-----|
| Catalog No. Solid Lid | Lid Type | Catalog No. Open Grate | Grate Type | A | B | C | E | F | G | H |
| R-6400-AS | C | R-6400-AO | G | 11 3/4 | 1 | 10 | 17 1/4 | 4 | 1 1/2 | 1 |
| R-6400-BS | B | R-6400-BO | G | 19 3/4 | 1 | 18 | 25 1/4 | 4 | 1 | 3/4 |
| R-6400-CS | C | R-6400-CO | G | 27 | 1 1/4 | 23 1/2 | 33 1/2 | 4 | 1 1/2 | 1 |
| R-6400-DS | C | R-6400-DO | G | 29 | 1 3/4 | 27 | 35 | 6 | 1 | 1 |

R-6450 Series Round Frame, Solid or Grated Cover

Light Duty



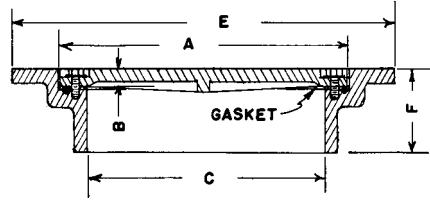
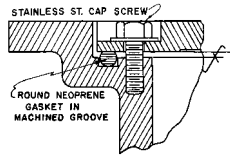
For bell end of vitrified clay pipe.

CAUTION: Pipe bell sizes from different manufacturers frequently vary. Check the casting dimensions with the table below to be sure the casting will fit the pipe you are using.

| Dimensions in inches | | | | | | | | | | | | | |
|-----------------------|------------------------|-----------|--------|-----|--------|--------|--------|-------|------------|----------------|------------|--------------|----------------------------|
| Catalog No. Solid Lid | Catalog No. Open Grate | Pipe Size | A | B | C | D2 | E | F | Frame Type | CATALOG NUMBER | GRATE TYPE | SQ. FT. OPEN | WEIR PERIMETER LINEAL FEET |
| R-6450-AL | R-6450-AG | 8 | 9 | 1 | 8 | 10 1/8 | 12 | 2 1/2 | Y | R-6450-AG | G | 0.2 | 2.4 |
| R-6450-BL | R-6450-BG | 10 | 12 | 1 | 11 | 13 | 14 3/4 | 2 1/2 | Y | R-6450-BG | G | 0.2 | 3.1 |
| R-6450-CL | R-6450-CG | 12 | 13 | 3/4 | 11 3/4 | 14 1/2 | 17 | 2 1/2 | W | R-6450-CG | G | 0.4 | 3.4 |
| R-6450-DL | R-6450-DG | 15 | 16 | 3/4 | 15 | 18 | 20 1/4 | 2 1/2 | Y | R-6450-DG | G | 0.5 | 4.2 |
| R-6450-EL | R-6450-EG | 18 | 20 1/2 | 5/8 | 18 | 22 1/2 | 24 | 2 1/2 | W | R-6450-EG | G | 0.7 | 5.4 |
| R-6450-FL | R-6450-FG | 20 | 21 1/2 | 1 | 20 | 24 1/2 | 27 | 4 | W | R-6450-FG | G | 0.1 | 5.6 |
| R-6450-GL | R-6450-GG | 21 | 24 | 3/4 | 22 | 25 1/2 | 30 | 3 1/2 | Y | R-6450-GG | G | 1.3 | 6.3 |
| R-6450-HL | R-6450-HG | 24 | 26 5/8 | 3/4 | 25 | 28 1/2 | 31 | 4 | Y | R-6450-HG | G | 1.3 | 6.9 |
| R-6450-JL | R-6450-JG | 27 | 31 3/4 | 3/4 | 30 | 35 1/4 | 36 1/2 | 6 | Y | R-6450-JG | G | 1.9 | 8.3 |
| R-6450-KL | R-6450-KG | 30 | 33 1/2 | 3/4 | 32 | 34 1/2 | 37 | 4 | Y | R-6450-KG | G | 2.7 | 8.8 |

R-6460 Series
Pressure-Type Round Manhole Frame, Bolted Lid
Water-, Gas-, and Steamtight

Heavy Duty



Suitable for low pressure application up to 20 p.s.i.

NOTE: Bolting pads reduce effective clear opening (dimension C) by 2" to 3". If "C" dimension is critical, select larger size.

Units are shipped assembled with gasket glued to frame.

| Catalog No. | Dimensions in inches | | | | | No. of Bolts |
|-------------|----------------------|-------|--------|--------|-------|--------------|
| | A | B | C | E | F | |
| R-6460-A | 21 | 1 1/2 | 18 | 27 1/2 | 5 | four |
| R-6460-B | 23 | 1 3/4 | 21 | 30 | 4 | four |
| R-6460-C | 27 | 1 1/4 | 23 1/2 | 33 1/2 | 4 | four |
| R-6460-D | 29 | 1 3/4 | 27 | 35 | 6 | six |
| R-6460-G1 | 38 | 1 1/2 | 36 | 49 | 4 1/2 | six |

R-6461 to R-6462 Series
Pressure-Type Round Manhole Frame, Bolted Lid
Water-, Gas-, and Steamtight

Heavy Duty

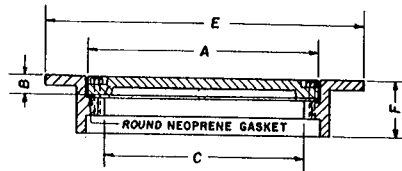
Suitable for low pressure application up to 20 p.s.i.

Frames in this series are reversible and can be installed with the flange at top for slab construction, or with flange at base for use with built-up manhole.

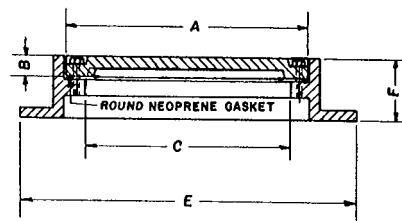
Slab construction type manhole covers are sized to fit in the opening of corrugated metal pipe from 12" to 48" in diameter.

Furnished standard with concealed, watertight pickhole. Lids sealed with gasket and fastened with stainless steel bolts.

Units are shipped assembled with gasket glued to lid.



Illustrating R-6461-EH Slab Type

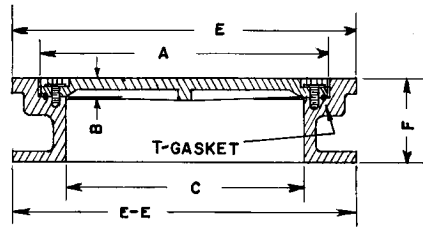
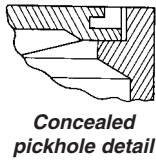


Illustrating R-6462-EH Built-up Type

| Catalog No. Slab Type | Catalog No. Built-Up Type | Dimensions in inches | | | | | No. of Bolts |
|-----------------------|---------------------------|----------------------|-------|--------|--------|---|--------------|
| | | A | B | C | E | F | |
| R-6461-AH | R-6462-AH | 10 1/4 | 1 1/2 | 6 1/2 | 14 1/2 | 4 | four |
| R-6461-BH | R-6462-BH | 13 1/4 | 1 1/2 | 9 1/2 | 17 1/2 | 4 | four |
| R-6461-CH | R-6462-CH | 16 1/4 | 1 1/2 | 12 1/2 | 20 1/2 | 4 | four |
| R-6461-DH | R-6462-DH | 18 1/4 | 1 1/2 | 14 1/2 | 22 1/2 | 4 | four |
| R-6461-EH | R-6462-EH | 22 1/4 | 1 1/2 | 18 1/2 | 26 1/2 | 4 | four |
| R-6461-FH | R-6462-FH | 25 1/4 | 1 1/2 | 21 1/2 | 29 1/2 | 4 | four |
| R-6461-GH | R-6462-GH | 28 1/4 | 1 1/2 | 24 1/2 | 32 1/2 | 4 | six |
| R-6461-HH | R-6462-HH | 31 1/4 | 1 1/2 | 30 1/2 | 38 1/2 | 4 | six |
| R-6461-JH | R-6462-JH | 40 | 1 1/2 | 36 1/2 | 44 1/2 | 4 | six |
| R-6461-KH | R-6462-KH | 46 1/8 | 1 1/2 | 42 1/2 | 50 1/2 | 4 | six |

R-6464 Series
Pressure-Type Round Manhole Frame, Bolted Lid
Water-, Gas-, and Steamtight

Heavy Duty



Suitable for low pressure application up to 20 p.s.i.

Seal type frames have flange at base as well as top. Furnished with T-gasket and stainless steel cap screws.

Units are shipped assembled with gasket glued to lid.

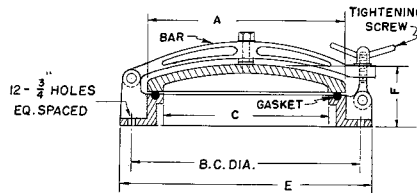
NOTE: Bolting pads reduce effective clear opening (dimension C) by 2" to 3". If "C" dimension is critical, select larger size.

Dimensions in inches

| Catalog No. | A | B | C | E | EE | F | No. of Bolts |
|-------------|--------|-------|----|--------|----|---|--------------|
| R-6464-D | 25 1/4 | 1 | 22 | 26 1/2 | 25 | 6 | four |
| R-6464-F | 26 | 1 | 24 | 27 3/4 | 27 | 8 | four |
| R-6464-G | 29 | 1 3/4 | 27 | 31 | 31 | 6 | six |

R-6470 Series
Low Pressure Water-Resistant Frame, Solid Lid, Lock Bar and Gasket

Light Duty



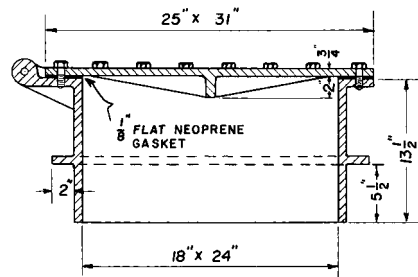
Units are shipped assembled with gasket glued to frame.

Dimensions in inches

| Catalog No. | A | C | E | F | Bolt Circle Diameter |
|-------------|----|----|----|---|----------------------|
| R-6470-A | 21 | 18 | 25 | 5 | 23 1/2 |
| R-6470-B | 27 | 24 | 31 | 6 | 29 1/2 |

R-6476
Pressure Frame, Lid

Heavy Duty



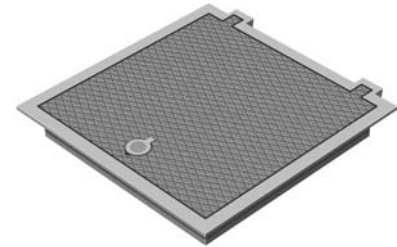
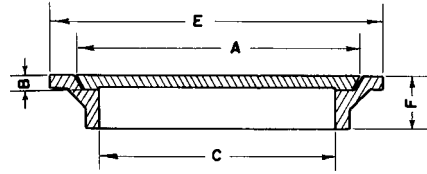
Suitable for low pressure application up to 20 p.s.i.

Used for pressure access covers in treatment plants or reservoirs. Cover is bolted with 28 exposed stainless steel hex head cap screws as specified. Note 2" water seal flange.

Units are shipped assembled with gasket glued to frame.

R-6660 to R-6661 Series Manhole Frame, Lid

Light Duty

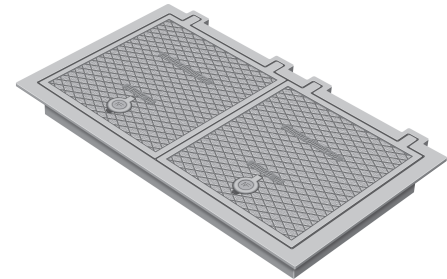


Illustrating R-6660-NH

Frames and lids in this series can be furnished standard without hinges or with Type T hinges as indicated below. Also, castings can be furnished with Type R butt hinges in stainless steel. (When butt hinges are required, specify the non-hinged unit with the hinge of your choice.) If fastening device is necessary, see page 16 for various types available on all units of this series.

These castings are also available using a gasketed and bolted lid. See R-6665-0-1 Series. Specify number of lids required where option is shown. Hold-open safety bars are furnished standard on most T-hinged units.

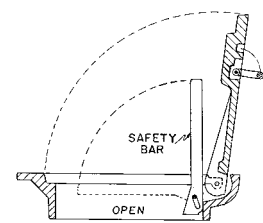
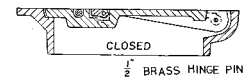
The specific location and number of hinges, handles and pickholes on these units may vary depending on the size and shape of the lids, and may not be exactly as illustrated. If the location and number of hinges, handles or pickholes is critical on your particular project, please specify requirements.



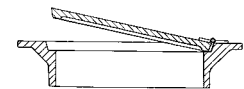
Illustrating R-6661-LH

| | | Dimensions in inches | | | | | | No. of Lids |
|------------------------|----------------------|----------------------|-------|-------------------|-----------------|-------|--------|-------------|
| Catalog No. Not Hinged | Catalog No. T-Hinged | A | B | C | E | F | | |
| Square | | | | | | | | |
| R-6660-AP | - | 12 x 12 | 3/4 | 10 x 10 | 18 1/2 x 18 1/2 | 4 | 1 | |
| R-6660-CP | - | 13 x 13 | 5/8 | 12 x 12 | 15 x 15 | 3 | 1 | |
| R-6660-DP | R-6660-DH | 15 x 15 | 3/4 | 13 5/16 x 13 5/16 | 19 x 19 | 4 | 1 | |
| R-6660-FP | R-6660-FH | 18 1/2 x 18 1/2 | 3/4 | 17 x 17 | 23 x 23 | 3 | 1 | |
| R-6660-GP | R-6660-GH | 19 3/4 x 19 3/4 | 3/4 | 18 1/2 x 18 1/2 | 24 x 24 | 4 | 1 | |
| R-6660-HP | R-6660-HH | 21 1/2 x 21 1/2 | 3/4 | 19 1/2 x 19 1/2 | 24 1/2 x 24 1/2 | 4 | 1 | |
| R-6660-JP | R-6660-JH | 23 1/2 x 23 1/2 | 3/4 | 21 7/8 x 21 7/8 | 28 1/2 x 28 1/2 | 4 | 1 | |
| R-6660-KP | R-6660-KH | 25 1/2 x 25 1/2 | 3/4 | 24 x 24 | 30 x 30 | 4 | 1 | |
| R-6660-MP | R-6660-MH | 30 x 30 | 3/4 | 28 x 28 | 34 x 34 | 4 | 1 | |
| R-6660-NP | R-6660-NH | 32 x 32 | 3/4 | 30 x 30 | 36 x 36 | 4 | 1 | |
| R-6660-PP | R-6660-PH | 38 x 38 | 3/4 | 36 x 36 | 46 x 46 | 4 | 1 | |
| R-6660-RP | R-6660-RH | 44 x 44 | 1 | 42 x 42 | 49 x 49 | 4 | 2 | |
| R-6660-TP * | R-6660-TH * | 56 3/8 x 56 3/8 | 1 1/2 | 54 x 54 | 64 x 64 | 4 1/2 | 2 | |
| Rectangular | | | | | | | | |
| R-6661-A1P | R-6661-A1H | 14 x 19 | 3/4 | 12 x 17 | 18 1/4 x 23 3/8 | 4 | 1 | |
| R-6661-BP | - | 14 x 26 | 3/4 | 12 x 24 | 18 x 30 | 4 | 1 | |
| R-6661-CP | R-6661-CH | 18 x 32 | 3/4 | 16 x 30 | 20 x 34 | 4 | 1 | |
| R-6661-DP | R-6661-DH | 19 5/8 x 49 5/8 | 3/4 | 18 x 48 | 22 x 52 | 4 | 2 | |
| R-6661-EP | R-6661-EH | 21 1/2 x 24 1/2 | 3/4 | 20 x 23 | 26 x 29 | 6 | 1 | |
| R-6661-F2P * | - | 21 1/2 x 65 5/8 | 3/4 | 20 x 64 | 28 x 72 | 4 | 2 | |
| R-6661-F3P * | - | 24 1/2 x 55 1/2 | 3/4 | 22 x 54 | 30 x 62 | 4 | 2 | |
| R-6661-FP | R-6661-FH | 22 x 32 | 3/4 | 20 x 30 | 26 x 36 | 5 1/4 | 1 | |
| R-6661-HP | R-6661-HH | 26 x 32 | 3/4 | 24 x 30 | 30 x 36 | 4 | 1 | |
| R-6661-JP | R-6661-JH | 26 x 38 | 3/4 | 24 x 36 | 30 x 42 | 4 | 1 or 2 | |
| R-6661-KP | R-6661-KH | 26 x 44 | 3/4 | 24 x 42 | 30 x 48 | 4 | 1 | |
| R-6661-LP | R-6661-LH | 25 1/2 x 49 1/2 | 3/4 | 24 x 48 | 30 x 54 | 4 | 2 | |
| R-6661-NP | R-6661-NH | 25 1/2 x 61 1/2 | 3/4 | 24 x 60 | 31 x 67 | 6 | 2 | |
| R-6661-PP | R-6661-PH | 28 3/4 x 31 3/4 | 3/4 | 27 x 30 | 34 x 37 | 4 | 1 | |
| R-6661-TP | R-6661-TH | 31 5/8 x 37 5/8 | 3/4 | 30 x 36 | 37 x 43 | 4 | 1 | |
| R-6661-UP | R-6661-UH | 32 x 43 3/4 | 3/4 | 30 x 42 | 37 x 47 1/2 | 4 | 1 or 2 | |
| R-6661-V1P | R-6661-V1H | 31 5/8 x 73 | 3/4 | 30 x 72 | 36 x 78 | 4 | 2 | |
| R-6661-VP | R-6661-VH | 32 x 50 | 3/4 | 30 x 48 | 36 x 54 | 4 | 1 or 2 | |
| R-6661-YP * | R-6661-YH * | 44 x 110 | 3/4 | 42 x 108 | 52 x 118 | 4 | 3 | |

* Frame in sections, bolted at corners.

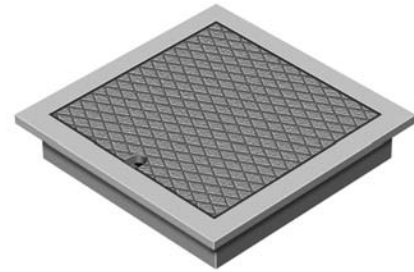
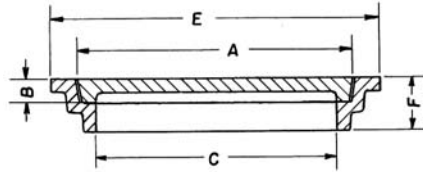
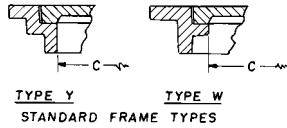


TYPE "R" BUTT HINGES



R-6662 to R-6663 Series Manhole Frame, Lid

Heavy Duty



Illustrating R-6662-CP

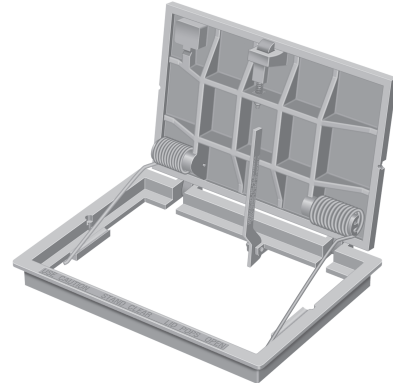
Frames and lids in this series can be furnished standard without hinges or with Type T hinges as indicated below. Also, castings can be furnished with Type R butt hinges in stainless steel. (When butt hinges are required, specify the non-hinged unit with the hinge of your choice.) If fastening device is necessary, see page 16 for various types available on all units of this series.

These castings are also available using a gasketed and bolted lid. See R-6665-2-3 Series. For similar castings with gratings, see R-6672-3 Series.

For complete information on our Spring Assist hatch products, please refer to the R-3498 Series.

Hold-open safety bars are furnished standard on most T-hinged units.

The specific location and number of hinges, handles and pickholes on these units may vary depending on the size and shape of the lids, and may not be exactly as illustrated. If the location and number of hinges, handles or pickholes is critical on your particular project, please specify requirements.



Illustrating R-6663-JS

| Catalog No. Not Hinged | Catalog No. T-Hinged | Catalog No. Spring Assist | Dimensions in inches | | | | No. of Lids | Frame Type |
|---------------------------|-------------------------|------------------------------|----------------------|-------|-----------------|-----------------|----------------|---------------|
| | | | A | B | C | E | | |
| Square | | | | | | | | |
| R-6662-AP | - | | 12 1/4 x 12 1/4 | 1 | 11 1/2 x 11 1/2 | 15 x 15 | 6 | Y |
| R-6662-BP ** | - | | 13 3/4 x 13 3/4 | 1 1/2 | 12 x 12 | 18 x 18 | 4 | W |
| R-6662-CP ** | R-6662-CH | | 18 x 18 | 1 1/2 | 16 x 16 | 22 x 22 | 4 | W |
| R-6662-EP ** | R-6662-EH | | 20 x 20 | 1 1/2 | 18 x 18 | 24 x 24 | 4 | W |
| R-6662-GP ** | R-6662-GH | | 21 1/2 x 21 1/2 | 1 1/2 | 20 x 20 | 26 x 26 | 4 | W |
| R-6662-HP ** | R-6662-HH | | 23 1/2 x 23 1/2 | 1 1/2 | 22 x 22 | 28 x 28 | 4 | W |
| R-6662-JP | - | | 25 1/4 x 25 1/4 | 1 3/4 | 23 x 23 | 31 1/2 x 31 1/2 | 4 | Y |
| R-6662-KP ** | R-6662-KH | R-6662-KS | 25 3/4 x 25 3/4 | 1 1/2 | 24 x 24 | 30 x 30 | 4 | W |
| R-6662-LP | - | | 27 x 27 | 2 | 25 x 25 | 33 1/2 x 33 1/2 | 4 | Y |
| R-6662-MP ** | R-6662-MH | | 27 1/2 x 27 1/2 | 1 1/2 | 26 x 26 | 32 x 32 | 4 | W |
| R-6662-NP ** | R-6662-NH | | 29 1/2 x 29 1/2 | 1 1/2 | 28 x 28 | 34 x 34 | 4 | W |
| R-6662-PP | R-6662-PH | R-6662-PS | 31 1/2 x 31 1/2 | 1 1/2 | 30 x 30 | 36 x 36 | 4 | W |
| R-6662-RP | R-6662-RH | R-6662-RS | 37 x 37 | 1 1/2 | 36 x 36 | 42 x 42 | 4 | W |
| R-6662-TP + | R-6662-TH | R-6662-TS | 50 x 50 | 1 1/2 | 48 x 48 | 56 x 56 | 4 | Y |
| Rectangular | | | | | | | | |
| R-6663-AP ** | R-6663-AH | | 14 x 20 | 1 1/2 | 12 x 18 | 18 x 24 | 4 | W |
| R-6663-BP ** | R-6663-BH | | 13 1/2 x 25 1/2 | 1 1/2 | 12 x 24 | 18 x 30 | 4 | W |
| R-6663-CP | R-6663-CH | | 19 1/2 x 25 1/2 | 1 1/2 | 18 x 24 | 24 x 30 | 4 | W |
| R-6663-DP ** | R-6663-DH | | 19 1/2 x 31 1/2 | 1 1/2 | 18 x 30 | 24 x 36 | 4 | W |
| R-6663-E1P | R-6663-E1H | | 20 x 44 | 1 1/2 | 18 x 42 | 24 x 48 | 4 | Y |
| R-6663-EP ** | R-6663-EH | | 19 3/4 x 37 3/4 | 1 1/2 | 18 x 36 | 24 x 42 | 4 | W |
| R-6663-FP | - | | 22 x 32 | 1 1/4 | 20 x 30 | 26 x 36 | 4 | Y |
| R-6663-HP | R-6663-HH | | 26 x 32 | 1 1/2 | 24 x 30 | 30 x 36 | 4 | Y |
| R-6663-JP | R-6663-JH | R-6663-JS | 25 1/2 x 37 1/2 | 1 1/2 | 24 x 36 | 30 x 42 | 4 | W |
| R-6663-KP ** | R-6663-KH | | 25 3/4 x 49 3/4 | 1 1/2 | 24 x 48 | 30 x 54 | 4 | W |
| R-6663-MP ** | R-6663-MH | | 31 3/4 x 37 3/4 | 1 1/2 | 30 x 36 | 30 x 42 | 4 | W |
| R-6663-NP ** | R-6663-NH | | 31 1/2 x 49 1/2 | 1 1/2 | 30 x 48 | 36 x 54 | 4 | W |
| R-6663-O1P * | R-6663-O1H * | | 38 x 50 | 1 1/2 | 36 x 48 | 44 1/2 x 56 1/2 | 4 | Y |
| R-6663-OP | R-6663-OH | | 35 3/4 x 59 7/8 | 1 3/8 | 34 x 58 | 40 x 64 | 6 | Y |
| R-6663-PP * | R-6663-PH * | | 44 x 62 | 1 3/8 | 42 x 60 | 50 1/2 x 68 1/2 | 4 | W |

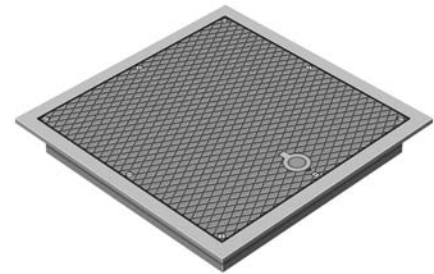
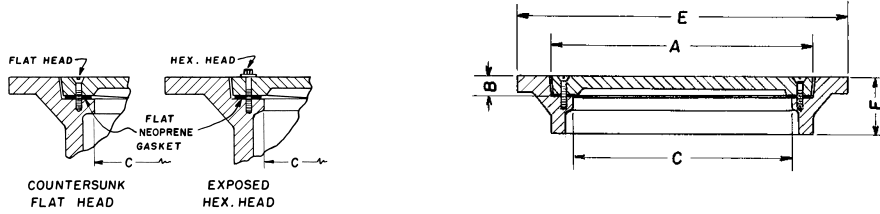
* Frame in sections bolted at corners.

** Furnished with pickhole instead of G-handle.

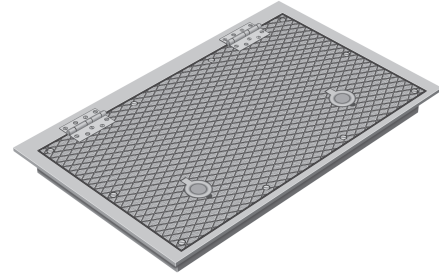
+ Available with centered 24" diameter removable center access lid.

R-6665-0 to R-6665-1 Series
Manhole Frame, Bolted/Gasketed Lid

Light Duty



Illustrating R-6665-0NP



Illustrating R-6665-1KH

Square and rectangular sizes in this series furnished standard with countersunk stainless steel flat head cap screws, flat neoprene gasket, Type G lift handle and, when so indicated, Type R stainless steel butt hinge.

All units available in cast aluminum or bronze for spark proof application.

Units are shipped assembled with gasket glued to frame.

The specific location and number of hinges, handles and pickholes on these units may vary depending on the size and shape of the lids, and may not be exactly as illustrated. If the location and number of hinges, handles or pickholes is critical on your particular project, please specify requirements.

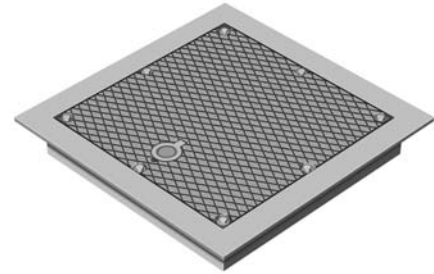
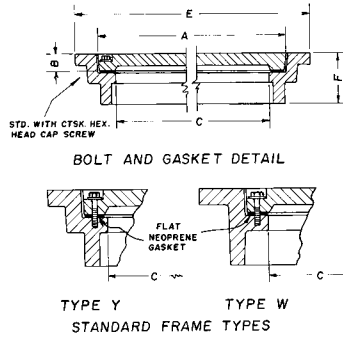
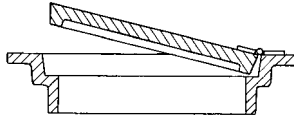
| Dimensions in inches | | | | | | | |
|------------------------|------------------------------|-----------------|-----|-----------------|-----------------|-------|--------------|
| Catalog No. Not Hinged | Catalog No. Steel Butt Hinge | A | B | C | E | F | No. of Bolts |
| Square | | | | | | | |
| R-6665-0AP | R-6665-0AH | 12 x 12 | 3/4 | 10 x 10 | 18 1/2 x 18 1/2 | 4 | 4 |
| R-6665-0CP | R-6665-0CH | 13 x 13 | 5/8 | 12 x 12 | 15 x 15 | 3 | 4 |
| R-6665-0DP | R-6665-0DH | 15 x 15 | 3/4 | 13 x 13 | 19 x 19 | 4 | 4 |
| R-6665-0FP | R-6665-0FH | 18 1/2 x 18 1/2 | 3/4 | 17 x 17 | 23 x 23 | 3 | 4 |
| R-6665-0GP | R-6665-0GH | 19 3/4 x 19 3/4 | 3/4 | 17 1/2 x 17 1/2 | 24 x 24 | 4 | 8 |
| R-6665-0HP | R-6665-0HH | 21 1/2 x 21 1/2 | 3/4 | 18 1/2 x 18 1/2 | 24 1/2 x 24 1/2 | 4 | 8 |
| R-6665-0JP | R-6665-0JH | 23 1/2 x 23 1/2 | 3/4 | 20 7/8 x 20 7/8 | 28 1/2 x 28 1/2 | 4 | 8 |
| R-6665-0KP | R-6665-0KH | 25 1/2 x 25 1/2 | 3/4 | 23 x 23 | 30 x 30 | 4 | 8 |
| R-6665-0MP | R-6665-0MH | 30 x 30 | 3/4 | 27 x 27 | 34 x 34 | 4 | 8 |
| R-6665-0NP | R-6665-0NH | 32 x 32 | 3/4 | 29 x 29 | 36 x 36 | 4 | 8 |
| Rectangular | | | | | | | |
| R-6665-1A1P | R-6665-1A1H | 14 x 19 | 3/4 | 11 x 16 | 18 1/4 x 23 3/8 | 4 | 4 |
| R-6665-1BP | R-6665-1BH | 14 x 26 | 3/4 | 11 x 23 | 18 x 30 | 4 | 6 |
| R-6665-1CP | R-6665-1CH | 18 x 32 | 3/4 | 15 x 29 | 20 x 34 | 4 | 6 |
| R-6665-1DP | R-6665-1DH | 19 5/8 x 49 5/8 | 3/4 | 17 x 47 | 22 x 52 | 4 | 12 |
| R-6665-1EP | R-6665-1EH | 21 1/2 x 24 1/2 | 3/4 | 19 x 22 | 26 x 29 | 6 | 8 |
| R-6665-1F3P * | R-6665-1F3H * | 24 1/2 x 55 1/2 | 3/4 | 19 x 29 | 30 x 62 | 4 | 12 |
| R-6665-1FP | R-6665-1FH | 22 x 32 | 3/4 | 22 x 54 | 26 x 36 | 5 1/4 | 10 |
| R-6665-1HP | R-6665-1HH | 26 x 32 | 3/4 | 23 x 29 | 30 x 36 | 4 | 8 |
| R-6665-1JP | R-6665-1JH | 26 x 38 | 3/4 | 23 x 35 | 30 x 42 | 4 | 10 |
| R-6665-1KP | R-6665-1KH | 26 x 44 | 3/4 | 22 x 40 | 30 x 48 | 4 | 10 |
| R-6665-1LP | R-6665-1LH | 25 1/2 x 49 1/2 | 3/4 | 23 x 47 | 30 x 54 | 4 | 12 |
| R-6665-1NP | R-6665-1NH | 25 1/2 x 61 1/2 | 3/4 | 23 x 59 | 31 x 67 | 6 | 12 |
| R-6665-1PP | R-6665-1PH | 29 x 32 | 3/4 | 26 x 29 | 34 x 37 | 4 | 8 |
| R-6665-1TP | R-6665-1TH | 31 5/8 x 37 5/8 | 3/4 | 29 x 35 | 37 x 43 | 4 | 12 |
| R-6665-1UP | R-6665-1UH | 32 x 43 3/4 | 3/4 | 29 x 41 | 37 x 47 1/2 | 4 | 12 |
| R-6665-1V1P | R-6665-1V1H | 31 5/8 x 73 | 3/4 | 29 x 47 | 36 x 78 | 4 | 18 |
| R-6665-1VP | R-6665-1VH | 32 x 50 | 3/4 | 29 x 71 | 36 x 54 | 4 | 14 |

* Frame in sections bolted at corners.

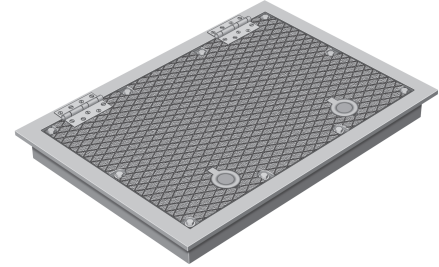
R-6665-2 to R-6665-3 Series Manhole Frame, Bolted/Gasketed Lid

Heavy Duty

TYPE "R" BUTT HINGES



Illustrating R-6665-2LP



Illustrating R-6665-3JH

Square and rectangular sizes in this series furnished standard with countersunk stainless steel flat head cap screws, flat neoprene gasket, Type G lift handle and, when so indicated, Type R stainless steel butt hinge.

NOTE: Some heavier lids may have bottom ribs that extend below the base of the frame. If this would cause a problem in your installation, advise when ordering.

Units are shipped assembled with gasket glued to frame.

The specific location and number of hinges, handles and pickholes on these units may vary depending on the size and shape of the lids, and may not be exactly as illustrated. If the location and number of hinges, handles or pickholes is critical on your particular project, please specify requirements.

| | | Dimensions in inches | | | | | No. of Bolts | Frame Type |
|------------------------|------------------------------|----------------------|-------|-----------------|-----------------|---|--------------|------------|
| Catalog No. Not Hinged | Catalog No. Steel Butt Hinge | A | B | C | E | F | | |
| Square | | | | | | | | |
| R-6665-2AP | R-6665-2AH | 12 1/4 x 12 1/4 | 1 | 11 1/2 x 11 1/2 | 15 x 15 | 6 | 4 | Y |
| R-6665-2BP | R-6665-2BH | 13 3/4 x 13 3/4 | 1 1/2 | 12 x 12 | 18 x 18 | 4 | 4 | W |
| R-6665-2CP | R-6665-2CH | 18 x 18 | 1 1/2 | 16 x 16 | 22 x 22 | 4 | 4 | W |
| R-6665-2EP | R-6665-2EH | 20 x 20 | 1 1/2 | 18 x 18 | 24 x 24 | 4 | 4 | W |
| R-6665-2GP | R-6665-2GH | 21 1/2 x 21 1/2 | 1 1/2 | 20 x 20 | 26 x 26 | 4 | 4 | W |
| R-6665-2HP | R-6665-2HH | 23 1/2 x 23 1/2 | 1 1/2 | 21 x 21 | 28 x 28 | 4 | 8 | W |
| R-6665-2JP | R-6665-2JH | 25 1/4 x 25 1/4 | 1 3/4 | 22 x 22 | 31 1/2 x 31 1/2 | 4 | 8 | Y |
| R-6665-2KP | R-6665-2KH | 25 3/4 x 25 3/4 | 1 1/2 | 23 x 23 | 30 x 30 | 4 | 8 | W |
| R-6665-2LP | R-6665-2LH | 27 x 27 | 2 | 24 x 24 | 33 1/2 x 33 1/2 | 4 | 8 | Y |
| R-6665-2MP | R-6665-2MH | 27 1/2 x 27 1/2 | 1 1/2 | 25 x 25 | 32 x 32 | 4 | 8 | W |
| R-6665-2NP | R-6665-2NH | 29 1/2 x 29 1/2 | 1 1/2 | 27 x 27 | 34 x 34 | 4 | 8 | W |
| R-6665-2OP | R-6665-2OH | 30 x 30 | 1 3/4 | 27 x 27 | 34 x 34 | 4 | 8 | Y |
| R-6665-2PP | R-6665-2PH | 31 1/2 x 31 1/2 | 1 1/2 | 29 x 29 | 37 x 37 | 4 | 8 | Y |
| R-6665-2RH | | | | | | | | |
| R-6665-2RP | | | | | | | | |
| R-6665-2TP | R-6665-2TH | 50 x 50 | 1 1/2 | 47 x 47 | 56 x 56 | 4 | 16 | Y |
| Rectangular | | | | | | | | |
| R-6665-3AP | R-6665-3AH | 14 x 20 | 1 1/2 | 11 x 17 | 18 x 24 | 4 | 6 | W |
| R-6665-3BP | R-6665-3BH | 13 1/2 x 25 1/2 | 1 1/2 | 11 x 23 | 18 x 30 | 4 | 6 | W |
| R-6665-3CP | R-6665-3CH | 19 1/2 x 25 1/2 | 1 1/2 | 17 x 23 | 24 x 30 | 4 | 8 | W |
| R-6665-3DP | R-6665-3DH | 19 1/2 x 31 1/2 | 1 1/2 | 17 x 29 | 24 x 36 | 4 | 8 | W |
| R-6665-3E1P | R-6665-3E1H | 20 x 44 | 1 1/2 | 17 x 41 | 24 x 48 | 4 | 10 | Y |
| R-6665-3EP | R-6665-3EH | 19 3/4 x 37 3/4 | 1 1/2 | 17 x 35 | 24 x 42 | 4 | 10 | W |
| R-6665-3FP | R-6665-3FH | 22 x 32 | 1 1/4 | 19 x 29 | 26 x 36 | 4 | 8 | Y |
| R-6665-3HP | R-6665-3HH | 26 x 32 | 1 1/2 | 23 x 29 | 30 x 36 | 4 | 8 | Y |
| R-6665-3JP | R-6665-3JH | 25 1/2 x 37 1/2 | 1 1/2 | 23 x 35 | 30 x 42 | 4 | 10 | W |
| R-6665-3KP | R-6665-3KH | 25 3/4 x 49 3/4 | 1 1/2 | 23 x 47 | 30 x 54 | 4 | 12 | W |
| R-6665-3NP | R-6665-3NH | 31 1/2 x 49 1/2 | 1 1/2 | 29 x 47 | 36 x 54 | 4 | 16 | W |
| R-6665-3O1P | R-6665-3O1H | 38 x 50 | 1 1/2 | 35 x 47 | 44 1/2 x 56 1/2 | 4 | 14 | W |
| R-6665-3OP * | R-6665-3OH * | 36 x 60 | 1 3/8 | 33 x 57 | 40 x 64 | 6 | 16 | Y |

* Frame in sections bolted a corners.

R-6668 to R-6669 Series
Pressure-Type Manhole Frame, Solid Lid

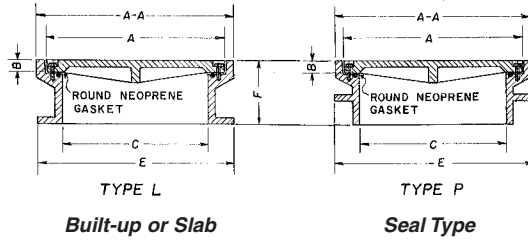
Heavy Duty

Suitable for low pressure application up to 20 p.s.i.

Manhole covers of this series are for use on built-up manholes or slab construction in either regular or seal type design. Suitable for use on pressure manholes or as water-resistant electrical junction boxes on bridges, etc. Lids are bolted to

frames with countersunk stainless steel hex head cap screws and sealed with neoprene gaskets. Concealed pickholes are included for complete water-tight application.

Units are shipped assembled with gasket glued to frame.



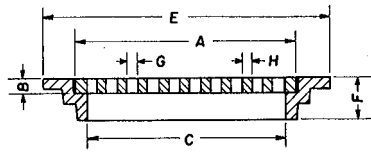
Illustrating Type L

| | | Dimensions in inches | | | | | | No. of Bolts |
|--------------------|--------------------|----------------------|-----------------|-------|---------|---------|---|--------------|
| Catalog No. Type L | Catalog No. Type P | A | AA | B | C | E | F | |
| | | Square | | | | | | |
| R-6668-L1 | R-6668-P1 | 15 3/4 x 15 3/4 | 17 1/2 x 17 1/2 | 1 1/2 | 12 x 12 | 18 x 18 | 8 | 4 |
| R-6668-L3 | | 21 3/4 x 21 3/4 | 23 1/2 x 23 1/2 | 1 1/2 | 18 x 18 | 24 x 24 | 8 | 4 |
| R-6668-L6 | R-6668-P6 | 27 5/8 x 27 5/8 | 29 1/2 x 29 1/2 | 1 1/2 | 24 x 24 | 30 x 30 | 8 | 8 |
| | | Rectangular | | | | | | |
| R-6669-L1 | | 15 3/4 x 21 3/4 | 17 1/2 x 23 1/2 | 1 1/2 | 12 x 18 | 18 x 24 | 8 | 6 |
| R-6669-L10 | R-6669-P10 | 33 3/4 x 51 3/4 | 35 1/2 x 53 1/2 | 1 1/2 | 30 x 48 | 36 x 54 | 8 | 16 |
| R-6669-L3 | R-6669-P3 | 21 3/4 x 27 3/4 | 23 1/2 x 29 1/2 | 1 1/2 | 18 x 24 | 24 x 30 | 8 | 8 |

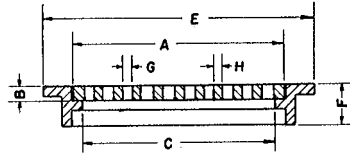
■ Note: When specifying/ordering grates, refer to "Choosing the proper inlet grate" on pages 117-118.
 For a complete listing of FREE OPEN AREAS and WEIR PERIMETERS of all NEENAH grates, refer to pages 306-311.

R-6672 to R-6673 Series Frame, Grate

Heavy Duty



Frame Style Y



Frame Style W



For similar castings with lids, see R-6662-3 Series.

Dimensions in inches

| Catalog No. | A | B | C | E | F | G | H | Frame Type |
|--------------------|-----------------|-------|-----------------|-----------------|-------|------------------|-------|------------|
| Square | | | | | | | | |
| R-6672-1 | 11 7/8 x 11 7/8 | 1 1/8 | 10 3/4 x 10 3/4 | 16 x 16 | 3 1/2 | 1 1/2 x 1 1/2 | 5/8 | Y |
| R-6672-A | 12 1/4 x 12 1/4 | 1 | 11 1/2 x 11 1/2 | 15 x 15 | 6 | 1 1/8 x 10 | 1 | Y |
| R-6672-B ** | 13 3/4 x 13 3/4 | 1 1/2 | 12 x 12 | 18 x 18 | 4 | 1 x 5 1/2 | 1 | W |
| R-6672-C | 18 x 18 | 1 1/2 | 16 x 16 | 24 x 24 | 4 1/2 | 1 x 4 1/4 | 1 | Y |
| R-6672-D | 21 1/2 x 21 1/2 | 1 1/2 | 20 x 20 | 26 x 26 | 4 | 1 3/8 x 3 5/8 | 1 | W |
| R-6672-E | 23 1/2 x 23 1/2 | 1 1/2 | 22 x 22 | 28 x 28 | 4 | 1 1/2 x 6 3/8 | 1 | W |
| R-6672-F ** | 25 3/4 x 25 3/4 | 1 1/2 | 24 x 24 | 30 x 30 | 4 | 1/2 x 4 1/2 | 1 | W |
| R-6672-G | 27 x 27 | 2 | 25 x 25 | 33 1/2 x 33 1/2 | 4 | 1 1/2 x 5 | 1 | Y |
| R-6672-H | 27 1/2 x 27 1/2 | 1 1/2 | 26 x 26 | 32 x 32 | 4 | 1 x 5 | 1 | W |
| R-6672-J | 30 x 30 | 1 3/4 | 28 x 28 | 34 x 34 | 4 | 1 1/2 x 6 | 1 1/4 | Y |
| R-6672-K ** | 31 3/4 x 31 3/4 | 1 1/2 | 30 x 30 | 37 x 37 | 4 | 1 x 6 3/8 | 1 1/8 | W |
| R-6672-M * | 37 x 37 | 1 1/2 | 36 x 36 | 42 x 42 | 4 | 1 3/4 x 3 1/2 | 1 1/2 | W |
| R-6672-Q *+ | 56 1/2 x 56 1/2 | 1 1/2 | 54 x 54 | 64 x 64 | 4 1/2 | 1 1/8 x 12 3/4 | 1 1/4 | Y |
| Rectangular | | | | | | | | |
| R-6673-A | 14 x 20 | 1 1/2 | 12 x 18 | 18 x 24 | 4 | 3/4 x 5 1/2 | 1 | W |
| R-6673-B | 13 1/2 x 25 1/2 | 1 1/2 | 12 x 24 | 18 x 30 | 4 | 1 x 4 1/2 | 1 | W |
| R-6673-C | 19 1/2 x 25 1/2 | 1 1/2 | 18 x 24 | 24 x 30 | 4 | 1 x 6 7/8 | 1 | W |
| R-6673-D | 19 3/4 x 31 3/4 | 1 1/2 | 18 x 30 | 24 x 36 | 4 | 2 x 5 | 1 | W |
| R-6673-E | 19 3/4 x 37 3/4 | 1 1/2 | 18 x 36 | 30 x 42 | 4 | 2 x 5 | 1 | W |
| R-6673-J | 25 1/2 x 31 1/2 | 1 1/2 | 24 x 30 | 30 x 36 | 4 | 1 3/8 x 5 | 1 | W |
| R-6673-K | 25 3/4 x 37 3/4 | 1 1/2 | 24 x 36 | 30 x 42 | 4 | 1 3/8 x 5 | 1 | W |
| R-6673-L * | 25 3/4 x 49 3/4 | 1 1/2 | 24 x 48 | 30 x 54 | 4 | 1 5/16 x 6 13/16 | 1 | W |
| R-6673-N ** | 31 3/4 x 37 3/4 | 1 1/2 | 30 x 36 | 36 x 42 | 4 | 1 3/8 x 4 5/8 | 1 | W |
| R-6673-O * | 31 1/2 x 49 1/2 | 1 1/2 | 30 x 48 | 36 x 54 | 4 | 1 1/2 x 4 3/4 | 1 | W |
| R-6673-Q1 * | 38 x 20 | 1 1/2 | 36 x 48 | 44 1/2 x 56 1/2 | 4 | 1 1/6 x 7 5/8 | 1 | W |

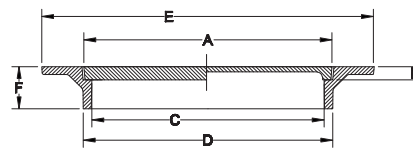
* Grate in two pieces.

** Also available with Type Q grate.

+ Frame in sections bolted at corners.

| CATALOG NUMBER | GRATE TYPE | SQ. FT. OPEN | WEIR PERIMETER LINEAL FEET |
|----------------|------------|--------------|----------------------------|
| R-6672-1 | H | 0.4 | 3.9 |
| R-6672-A | A or C | 0.8 | 4.1 |
| R-6672-B | A or C | 0.5 | 4.6 |
| R-6672-B | Q | 0.2 | 4.6 |
| R-6672-C | A or C | 0.8 | 6.0 |
| R-6672-D | A or C | 1.1 | 7.3 |
| R-6672-E | A or C | 1.8 | 7.9 |
| R-6672-F | A or C | 2.7 | 8.6 |
| R-6672-F | Q | 1.0 | 8.6 |
| R-6672-G | A or C | 2.2 | 9.0 |
| R-6672-H | A or C | 2.1 | 9.2 |
| R-6672-J | A or C | 2.4 | 10.0 |
| R-6672-K | A or C | 2.5 | 10.6 |
| R-6672-K | Q | 2.1 | 10.6 |
| R-6672-M | A or C | 3.0 | 12.3 |
| R-6672-Q | A or C | 9.3 | 18.8 |
| R-6673-A | A | 0.6 | 5.7 |
| R-6673-B | A | 0.9 | 6.5 |
| R-6673-C | A | 1.2 | 7.5 |
| R-6673-D | A | 2.1 | 8.6 |
| R-6673-E | A | 2.5 | 9.6 |
| R-6673-J | A | 2.6 | 9.5 |
| R-6673-K | A | 2.9 | 10.6 |
| R-6673-L | A | 3.7 | 12.6 |
| R-6673-N | A | 3.3 | 11.6 |
| R-6673-O | A | 4.9 | 13.5 |
| R-6673-Q1 | A | 5.0 | 14.7 |

R-6679 Series Electrical Handhole Frame, Lid



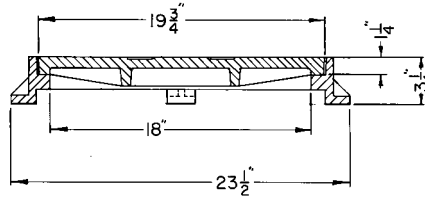
Illustrating R-6679-B1

Dimensions in inches

| Catalog No. | A | B | C | D | E | F | Duty |
|-------------|--------|-------|----|--------|--------|---|-------|
| R-6679-A1 | 23 1/2 | 1 1/4 | 22 | 23 1/2 | 31 1/2 | 4 | Light |
| R-6679-B1 | 23 1/2 | 1 1/4 | 22 | 23 1/2 | 31 1/2 | 4 | Heavy |

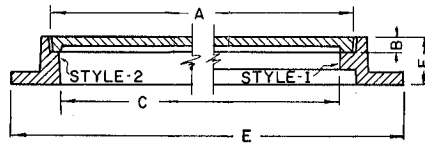
R-6680-A
Manhole Frame, Solid Lid

Heavy Duty



R-6681 to R-6685 Series
Square Pull Box Frame, Lid

Light Duty



Illustrating R-6683-1

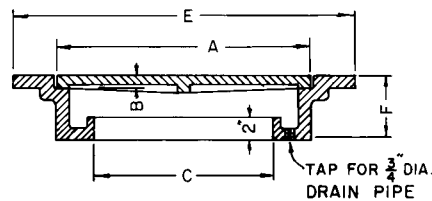
Light weight design for pull boxes, junction or splice boxes, in areas not subject to traffic. Ideal for street lighting or traffic marker installations.

Dimensions in inches

| Catalog No. | A | B | C | E | F | Frame Style |
|--------------------|-----------------|-------|-----------------|-----------------|-------|-------------|
| Square | | | | | | |
| R-6681-2 | 17 5/8 x 17 5/8 | 1/2 | 16 7/8 x 16 7/8 | 22 1/8 x 22 1/8 | 3 | 1 |
| R-6683-1 | 18 x 18 | 1 | 17 3/8 x 17 3/8 | 22 x 22 | 3 | 1 |
| R-6683-2 | 23 3/4 x 23 3/4 | 15/16 | 21 7/8 x 21 7/8 | 30 x 30 | 3 | 1 |
| Rectangular | | | | | | |
| R-6684-2 | 10 3/4 x 18 3/4 | 1/2 | 10 x 18 | 16 x 24 | 3 | 1 |
| R-6685-1 | 17 7/8 x 24 | 1/2 | 17 x 22 1/2 | 24 1/2 x 30 | 3 | 2 |
| R-6685-5 | 24 x 36 | 1 | 23 x 34 3/4 | 29 x 41 | 3 1/8 | 2 |

R-6685 Series
Manhole Frame, Solid Lid with Inner Trough

Light Duty



Illustrating R-6685-D with lid removed

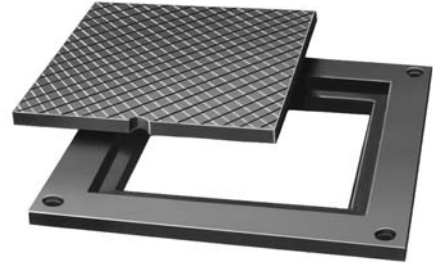
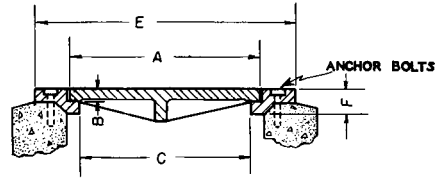
Inner trough catches surface seepage which is drained off through line from tapped hole. Standard tap size is 3/4".

Dimensions in inches

| Catalog No. | A | B | C | E | F |
|-------------|-----------------|-----|---------|-----------------|---|
| R-6685-C | 23 1/2 x 23 1/2 | 3/4 | 18 x 18 | 28 1/2 x 28 1/2 | 4 |
| R-6685-D | 30 x 30 | 3/4 | 24 x 24 | 34 x 34 | 4 |

R-6686 Series
Electrical Pull Box Frame, Solid Lid

Heavy Duty

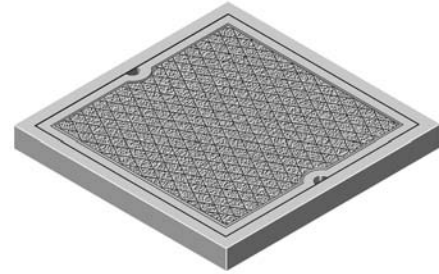
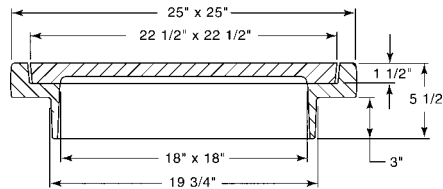


For security, cover can be bolted to frame.

| Dimensions in inches | | | | | |
|----------------------|-----------------|---|-----------------|---------|---|
| Catalog No. | A | B | C | E | F |
| R-6686 | 17 3/4 x 17 3/4 | 1 | 15 3/4 x 15 3/4 | 24 x 24 | 2 |
| R-6686-A | 12 x 18 | 1 | 10 x 16 | 16 x 22 | 2 |

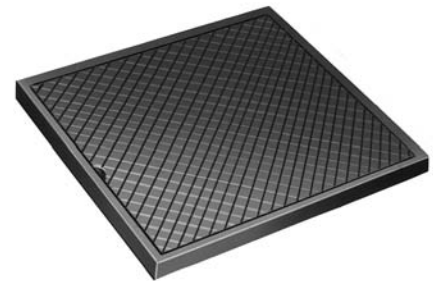
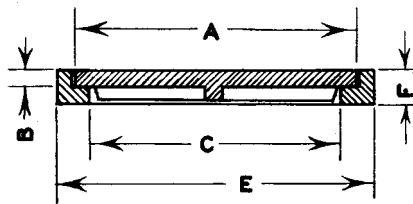
R-6686-D
Conduit Junction Well Frame, Solid Lid

Heavy Duty



R-6687 Series
Conduit Box Frame, Solid Lid

Light Duty

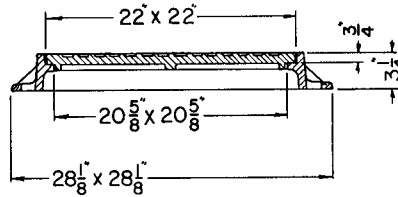


Lids can be furnished bolted at the corners.

| Dimensions in inches | | | | | |
|----------------------|-----------------|-------|-----------------|-----------------|-------|
| Catalog No. | A | B | C | E | F |
| R-6687-A | 10 x 10 | 1 | 8 x 8 | 11 1/4 x 11 1/4 | 1 1/2 |
| R-6687-A1 | 12 x 18 | 1/2 | 10 x 16 | 13 1/2 x 19 1/2 | 1 1/4 |
| R-6687-B | 13 7/8 x 15 7/8 | 1/2 | 12 x 14 | 15 x 17 | 1 |
| R-6687-C | 14 x 28 | 1 | 12 x 26 | 15 1/4 x 19 1/4 | 1 1/2 |
| R-6687-D | 15 7/8 x 15 7/8 | 1 1/8 | 14 1/2 x 14 1/2 | 17 1/8 x 17 1/8 | 1 3/4 |
| R-6687-E | 20 3/8 x 20 3/8 | 1 | 18 3/4 x 18 3/4 | 21 1/4 x 21 1/4 | 1 1/2 |
| R-6687-F | 23 x 29 | 1 1/2 | 20 x 26 | 24 x 30 | 2 1/8 |

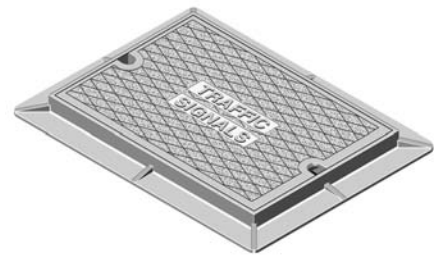
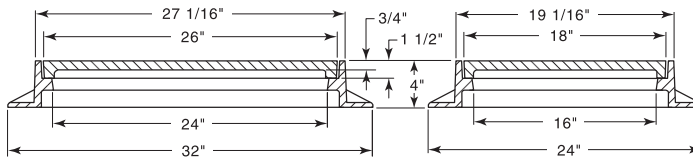
R-6688-2
Handhole Frame, Lid

Light Duty



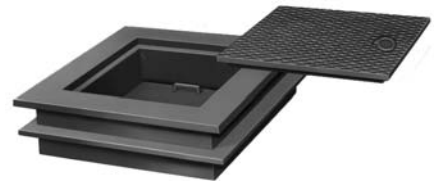
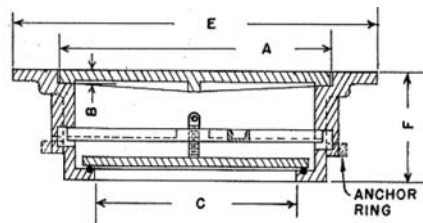
R-6689
Electrical Pull Box Frame, Solid Lid

Heavy Duty



R-6690 Series
Square Manhole Frame, Top Lid, Inner Lid

Light Duty



Type A assembly with optional anchor ring

For use as frost- or water-resistant assembly on pits, tanks or reservoirs where hydrostatic head is not involved. Inner lid provides protection against surface water inflow. Either Type A or Type B furnished with anchor ring only when specified.

| Dimensions in inches | | | | | | |
|----------------------|-------------|---------|-----|---------|-----------------|---|
| Catalog No. | Catalog No. | A | B | C | E | F |
| Type A | Type B | | | | | |
| R-6690-BA | R-6690-BB | 24 x 24 | 3/4 | 19 x 19 | 28 1/2 x 28 1/2 | 7 |
| R-6690-FA | R-6690-FB | 32 x 32 | 3/4 | 27 x 27 | 37 x 37 | 8 |



Type B assembly with lock bar

R-7500 Series
Cast Iron Stop Plank Grooves

Sewage Disposal Castings

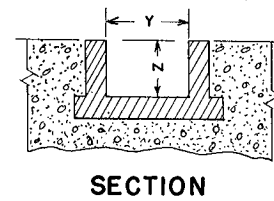
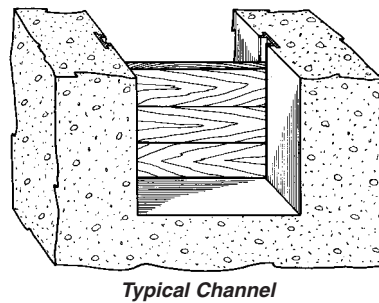
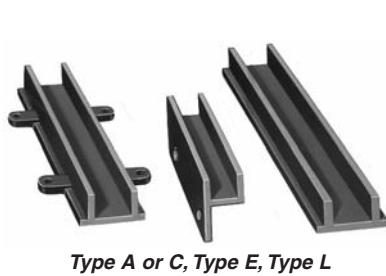
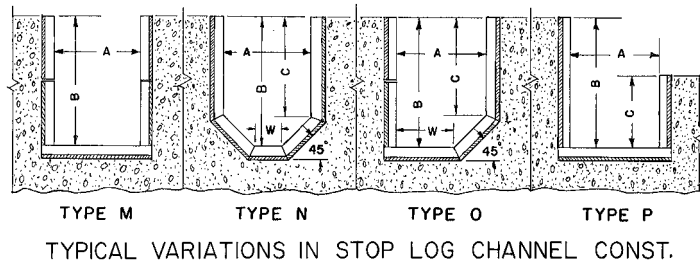
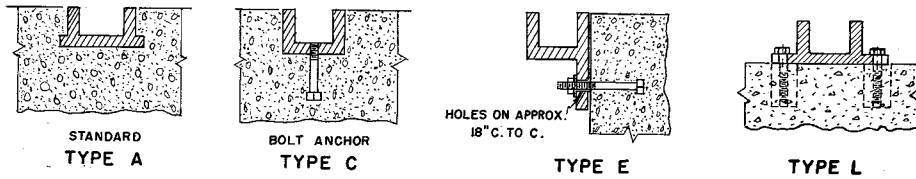
Groove supplied in standard three-foot maximum lengths, with slot dimensions as shown in table. Fractional sections may be obtained to give any overall length required.

Specify when ordering - send details as required:

- Catalog number
- Groove Type
- "Y" and "Z" dimensions
- "A", "B" and "C" dimensions

| Catalog No. | Y | Z |
|-------------|---|---|
| R-7500-22 | 2 | 2 |
| R-7500-33 | 3 | 3 |
| R-7500-44 | 4 | 4 |
| R-7500-66 | 6 | 6 |
| R-7500-86 * | 8 | 6 |

* Not available in Type E.



NOTE: Most "Y" and "Z" dimensions can be furnished interchangeably and are not limited to dimensions opposite each other.

R-7501 Series Grooves and Stop Plates

Grooves furnished in cast iron, aluminum, and as indicated, extruded aluminum and fibre reinforced polyester. Plates are available in plain steel, galvanized steel, fabricated aluminum or fibre reinforced polyester.

Specify when ordering:

- Catalog Number
- Type and material of groove required
- Material of plate required
- Plate requirements - fabricated or slot type handles
- Number of assemblies required, or groove only
- Dimensions and drawings as required

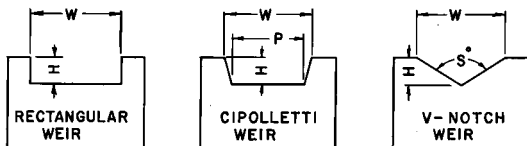
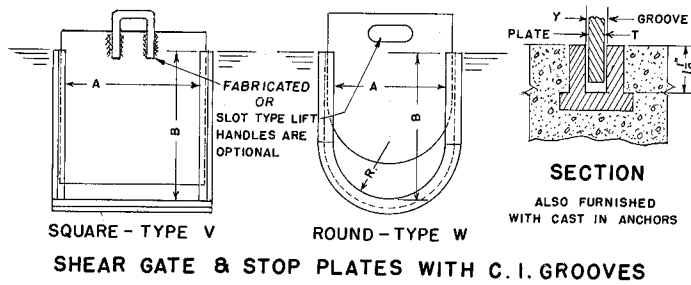
| Catalog No. | Dimensions in inches | | | |
|----------------------|----------------------|-----|-----|-----|
| | A * | B * | Y | T |
| Square Type V | | | | |
| R-7501-AV ** | | | 1/4 | 1/8 |
| R-7501-BV | | | 3/8 | 1/4 |
| R-7501-CV | | | 1/2 | 3/8 |
| R-7501-DV | | | 5/8 | 1/2 |
| R-7501-EV | | | 3/4 | 5/8 |
| R-7501-FV | | | 7/8 | 3/4 |

* Any size requested

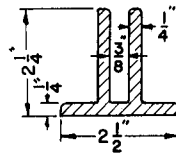
** Extruded aluminum only

| Catalog No. | Dimensions in inches | | | |
|---------------------------------------|----------------------|----|-----|-----|
| | A | R | Y | T |
| Round Type W - Aluminum Only * | | | | |
| R-7501-CW | 24 | 12 | 1/2 | 3/8 |
| R-7501-DW | 30 | 15 | 1/2 | 3/8 |
| R-7501-EW | 36 | 18 | 5/8 | 1/2 |
| R-7501-FW | 48 | 24 | 5/8 | 1/2 |

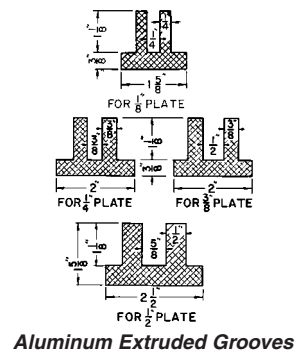
* Specify dimension "B"



Rectangular, cipolletti, or V-notch weirs are also available in plain steel, galvanized steel, aluminum or fibre reinforced polyester. Send complete dimensional information.

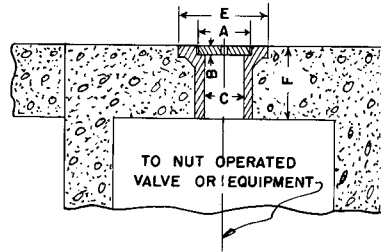


Fibre Reinforced Polyester Groove



■ Note: When specifying/ordering grates, refer to “Choosing the proper inlet grate” on pages 117-118.
 For a complete listing of FREE OPEN AREAS and WEIR PERIMETERS of all NEENAH grates, refer to pages 306-311.

R-7506 Series
Floor Box Frames and Lids



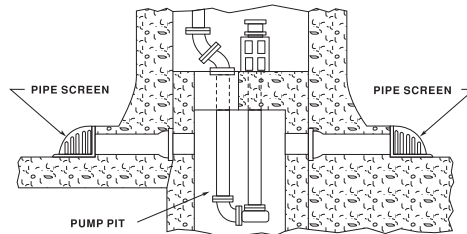
Floor boxes placed in slab provide access to extension stems which operate gate valves, plug valves, or sluice gates at a lower level.

Furnished with removable lid that can be drilled and tapped for pipe extension. (specify if required). Made in various lengths to fit slab thickness. (specify F dimension).

| Catalog No. | Dimensions in inches | | | | |
|-------------|----------------------|-----|----|----|--------|
| | A | B | C | E | F * |
| R-7506-A | 5 1/2 | 3/8 | 4 | 7 | 18 max |
| R-7506-B | 6 | 1/2 | 5 | 8 | 24 max |
| R-7506-C | 7 1/2 | 1/2 | 6 | 9 | 20 max |
| R-7506-D | 9 1/2 | 1/2 | 8 | 12 | 17 max |
| R-7506-E | 11 1/2 | 1/2 | 10 | 13 | 16 max |
| R-7506-F | 13 1/2 | 1/2 | 12 | 15 | 24 max |

* Manufactured to dimension required. Specify slab thickness when ordering.

R-7512 Series
Cast Iron Pipe Screen



Typical Use in Subway Construction

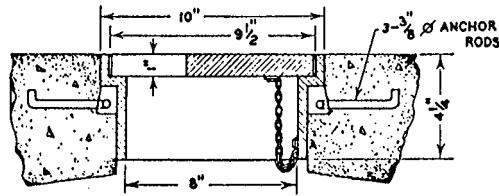


For maximum free drainage area with openings sized to prevent clogging.
 Six 3/4" holes for anchor bolts.

| Catalog No. | Dimensions in inches | | | | |
|-------------|----------------------|--------|----------|-------|---------------|
| | Height | Length | Openings | Width | for Pipe Size |
| R-7512-A1 | 13 | 18 | 1 | 16 | 10 inch |
| R-7512-B1 | 13 | 18 | 1 | 18 | 12 inch |

■ Note: When specifying/ordering grates, refer to "Choosing the proper inlet grate" on pages 117-118.
 For a complete listing of FREE OPEN AREAS and WEIR PERIMETERS of all NEENAH grates, refer to pages 306-311.

R-7514
Valve Handhole Frame and Lid

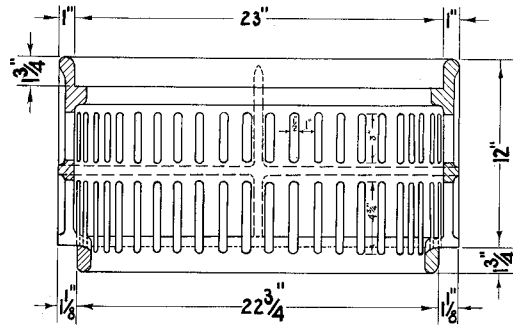


Anchor rods not furnished



Used as access covers to valves for steam-, air-, or waterlines in railway terminals, subway or industrial installations. Lids furnished standard without lettering. Also available are lids marked "S", "A", "E" or "W". Standard units have lid chained to frame to prevent loss. Note large slot in cover to aid in easy removal.

R-7516
Round Ballast Screen

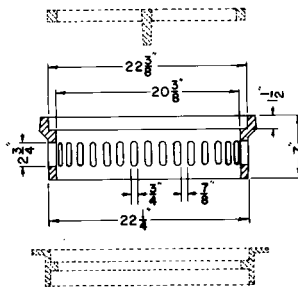


Used where positive drainage must be assured



Designed to fit R-2504 standard catch basin frame with grate fitting top recess of ballast screen. Also compatible with R-1713 frames and lids. Can be double or triple stacked as needed.

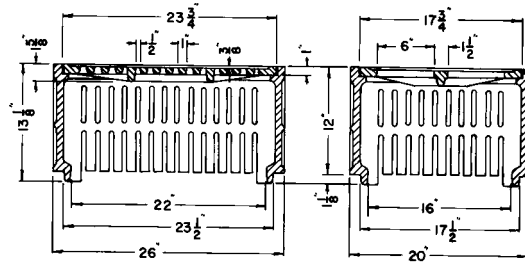
R-7516-C
Round Ballast Screen



Designed to fit in lid opening of R-5901-E slab type frame. Frame is designed to fit 24" corrugated metal pipe. When specified, top cover grate and frame can also be furnished. Can be double or triple stacked as needed.

■ Note: When specifying/ordering grates, refer to "Choosing the proper inlet grate" on pages 117-118.
 For a complete listing of FREE OPEN AREAS and WEIR PERIMETERS of all NEENAH grates, refer to pages 306-311.

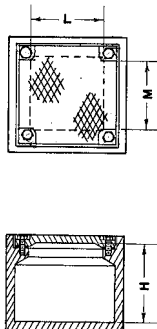
R-7516-D
Rectangular Ballast Screen



Can be double or triple stacked as needed.

R-7517 Series
Electrical Junction Boxes

Light Duty



Solid box types for bridge and street lighting. Suitable for underground electrical work.
 Standard boxes furnished with neoprene gaskets and stainless steel cap screws.
 Cored or tapped holes for conduit not furnished as standard; available if specified at additional cost - send details showing sizes and locations.
 Units are shipped assembled.

| Catalog No. | Dimensions in inches | | |
|-------------|----------------------|--------|--------|
| | H | L | M |
| R-7517-B | 8 | 8 | 8 |
| R-7517-DA | 4 1/2 | 10 | 6 |
| R-7517-DB | 10 | 12 | 12 |
| R-7517-DC | 10 | 12 | 18 |
| R-7517-DE | 17 1/8 | 14 3/4 | 14 3/4 |