

## R-4985 Series Curb and Sidewalk Guards

### Heavy Duty

Used for protection of concrete curb, traffic islands, parking areas, driveways and similar installations.

Cast iron guard is securely bonded to concrete and eliminates damage to concrete curb. Coefficients of expansion of cast iron and concrete are identical for all practical purposes, making the bond between metal and concrete unaffected by temperature changes. Cast iron elements resist abrasion and corrosion and are a permanent installation. Impact will not cause surface damage.

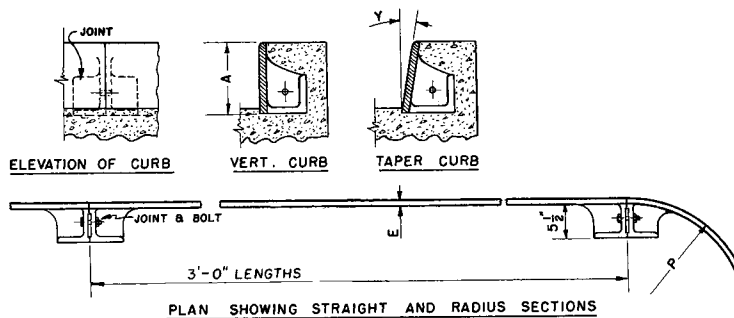
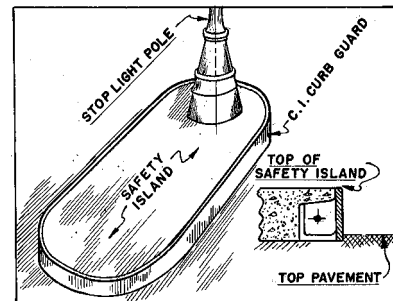
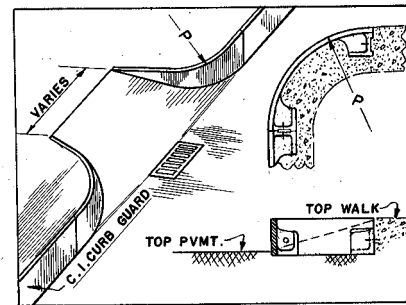
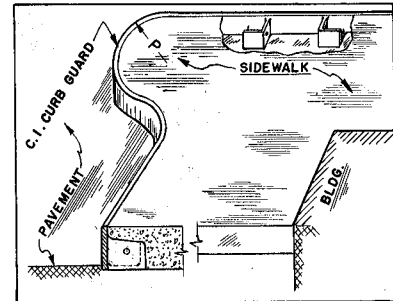
Any curb guard on this page can be furnished in Ductile Iron for special applications. Ductile Iron has all the advantages of Gray Iron, plus the high strength, toughness, ductility and wear-resistance of steel.

Guard sections are manufactured in maximum 36" lengths; corner radii can be made to fit any irregular-shaped area around which a curb is necessary, on special request.

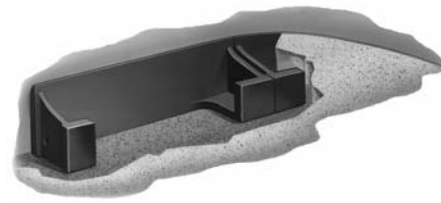
Specify:

- 1- Catalog Number.
- 2- Type of Curb.
- 3- Complete dimensional information including variables as shown in table key.
- 4- Special requirements (send sketch).

| Catalog No. | Type          | Dimension Data   |
|-------------|---------------|--|
| R-4985-A    | Vertical Curb | A - as specified<br>E - 3/4 inch<br>P - as required                            |
| R-4985-B    | Taper Curb    | A - as specified<br>E - 3/4 inch<br>P - as required<br>Y - any degree required |



Cutaway from street, showing curb guard



Cutaway of rear section imbedded in concrete