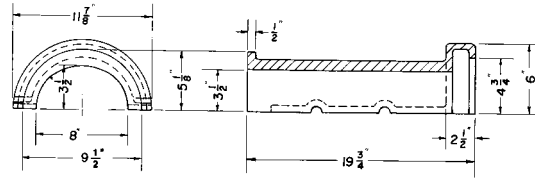


■ Note: When specifying/ordering grates, refer to "Choosing the proper inlet grate" on pages 117-118.
 For a complete listing of FREE OPEN AREAS and WEIR PERIMETERS of all NEENAH grates, refer to pages 306-311.

R-4028 Cast Iron Underdrain

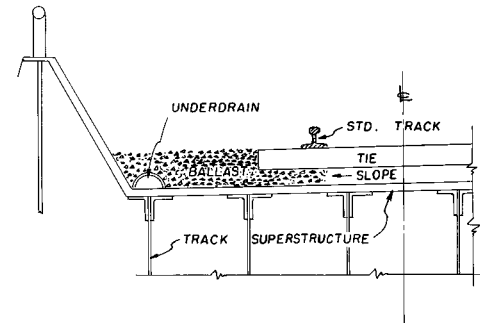
Heavy Duty



Drawing demonstrates cast iron underdrain sections used along railroad right-of-way. Ballast or gravel-filled road bed permits ready drainage of surface water into underdrain where it is conducted to the storm sewer.

Laying length is 18".

Note drainage intake holes in each section of cast iron underdrain.



R-4030 to R-4040 Series Sewer Pipe Grate

Heavy Duty

CATALOG NUMBER	GRATE TYPE	SQ. FT. OPEN	WEIR PERIMETER LINEAL FEET
R-4030-4	H	0.1	1.5
R-4030-6	H	0.1	2.1
R-4030-8	H	0.2	2.7
R-4030-10	H	0.3	3.3
R-4030-12	H	0.4	3.9
R-4030-15	H	0.8	4.8
R-4030-18	B	1.1	5.8
R-4030-21	B	1.3	6.7
R-4030-24	B	2.1	7.6
R-4030-27	G	2.8	8.6
R-4030-30	G	3.4	9.4

CATALOG NUMBER	GRATE TYPE	SQ. FT. OPEN	WEIR PERIMETER LINEAL FEET
R-4040-6	E	0.1	2.1
R-4040-8	E	0.2	2.7
R-4040-10	E	0.3	3.3
R-4040-12	E	0.5	3.9
R-4040-15	E	0.7	4.8
R-4040-18	E	0.9	5.8
R-4040-21	G	1.4	6.7
R-4040-24	G	1.6	7.6
R-4040-27	G	2.3	8.6
R-4040-30	G	2.9	9.4

Fits in bell end of standard sewer pipe.

Bell and spigot vitrified clay and concrete pipe are made under many specifications and dimensions vary. Check the grate sizes in the table to be sure they will fit the pipe you are using.

If specified, special setback lug arrangement is available on R-4040 series which modifies grate to fit corrugated metal pipe in sizes indicated. Not available on R-4030 series.

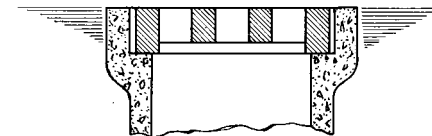
Dimensions in inches				
Catalog No.	Catalog No.	Pipe Size	Grate Dia.	Grate * Thickness
Heavy Duty	Light Duty			
R-4030-4 £	n/a	4	5 3/4	1 1/2
R-4030-6 £	R-4040-6	6	8	2
R-4030-8 £	R-4040-8	8	10 3/8	2 1/4
R-4030-10 £	R-4040-10	10	12 5/8	2 1/2
R-4030-12 £	R-4040-12	12	14 3/4	2 1/2
R-4030-15 £	R-4040-15	15	18 1/4	2 3/4
R-4030-18 + **	R-4040-18	18	22	2 3/4
R-4030-21 + **	R-4040-21	21	25 1/2	3
R-4030-24 + **	R-4040-24	24	29	3 1/4
R-4030-27 **	R-4040-27	27	32 3/4	3 1/2
R-4030-30 **	R-4040-30	30	36	3 3/4

* For Light Duty series, this figure includes legs.

** Slotted openings.

£ Square openings

+ Slight crown.



R-4030 type grates



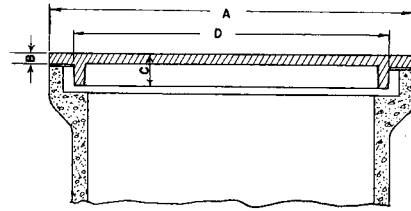
R-4040 type grate with legs

DRAINAGE GRATES 7

■ Note: When specifying/ordering grates, refer to “Choosing the proper inlet grate” on pages 117-118.
 For a complete listing of FREE OPEN AREAS and WEIR PERIMETERS of all NEENAH grates, refer to pages 306-311.

R-4044 Series
Manhole Lids for Pipe Bell

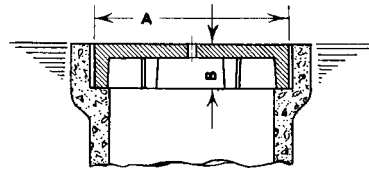
Light Duty



Dimensions in inches					
Catalog No.	Pipe Size	A	B	C	D
R-4044-A	4	7 1/8	1/2	1 1/4	5 3/8
R-4044-B	6	9 1/2	1/2	1 1/2	7 3/4
R-4044-D	10	14 3/4	1/2	2 1/4	12 3/4
R-4044-E	12	17 1/4	5/8	2 1/4	14 1/2
R-4044-F	15	21 1/4	5/8	2 1/4	17
R-4044-G	18	25 1/2	5/8	2 1/2	21 3/4
R-4044-J	21	29 1/2	3/4	2 1/2	24 7/8
R-4044-K	24	33 1/4	3/4	2 1/2	29 1/4

R-4055 Series
Sewer Pipe Bell Cover

Light Duty



Supplied with 1" lift hole as standard. Available without lift hole if specified.
 When ordering, please advise pipe size. Bell and spigot vitrified clay and concrete pipe are made under many specifications and dimensions vary. Check the cover sizes in the table to be sure they will fit the pipe you are using.

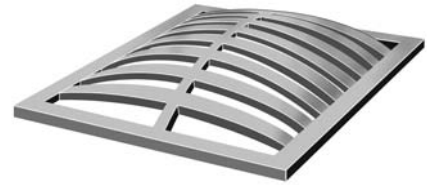
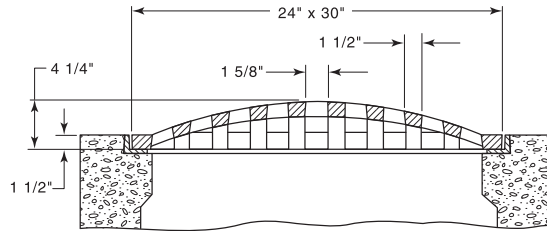
Dimensions in inches			
Catalog No.	Pipe Size	A	B
R-4055-4	4	5 3/4	1 1/2
R-4055-6	6	8	2
R-4055-8	8	10 3/8	2 1/4
R-4055-10	10	12 5/8	2 1/2
R-4055-12	12	14 3/4	2 1/2
R-4055-15	15	18 1/4	2 3/4
R-4055-18	18	22	2 3/4
R-4055-21	21	25 1/2	3
R-4055-24	24	29	3 1/4
R-4055-27	27	32 3/4	3 1/2
R-4055-30	30	36	3 3/4

■ Note: When specifying/ordering grates, refer to "Choosing the proper inlet grate" on pages 117-118.
 For a complete listing of FREE OPEN AREAS and WEIR PERIMETERS of all NEENAH grates, refer to pages 306-311.

R-4215-A
Convex Grate

Heavy Duty

CATALOG NUMBER	GRATE TYPE	SQ. FT. OPEN	WEIR PERIMETER LINEAL FEET
R-4215-A	Beehive	2.0	9.0

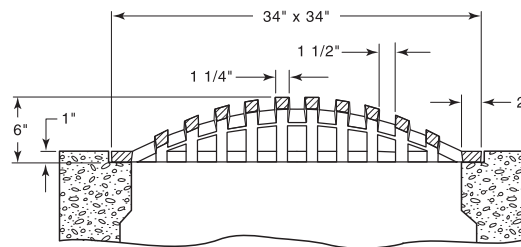


Available with or without angle frame, please specify.
 For side ditch drainage.

R-4215-C
Convex Grate

Heavy Duty

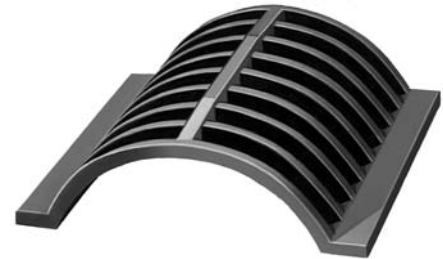
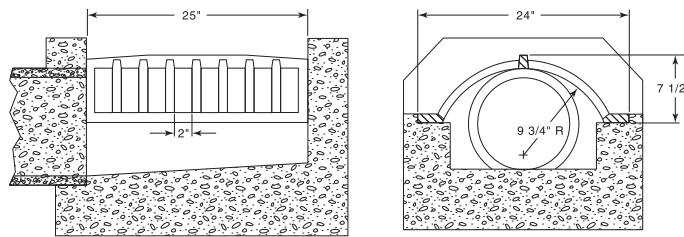
CATALOG NUMBER	GRATE TYPE	SQ. FT. OPEN	WEIR PERIMETER LINEAL FEET
R-4215-C	Beehive	3.3	11.3



For side ditch drainage.

R-4216-B
Earth Ditch Grate

Heavy Duty



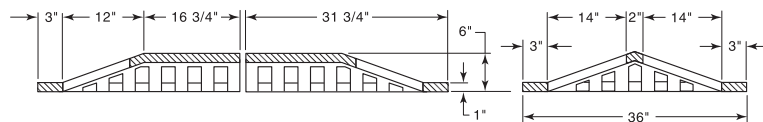
CATALOG NUMBER	GRATE TYPE	SQ. FT. OPEN	WEIR PERIMETER LINEAL FEET
R-4216-B	Beehive	2.2	4.1

Allows maximum drainage of surface water in sod or cobbled ditch gutters.

R-4217
Basket Grate

Heavy Duty

CATALOG NUMBER	GRATE TYPE	SQ. FT. OPEN	WEIR PERIMETER LINEAL FEET
R-4217	Beehive	4.9	7.1



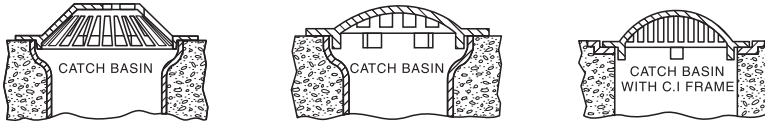
Note grate made in two sections.

DRAINAGE GRATES 7

■ Note: When specifying/ordering grates, refer to "Choosing the proper inlet grate" on pages 117-118.
 For a complete listing of FREE OPEN AREAS and WEIR PERIMETERS of all NEENAH grates, refer to pages 306-311.

R-4340 Series Round Beehive Grate

Light Duty



CATALOG NUMBER	GRATE TYPE	SQ. FT. OPEN	WEIR PERIMETER LINEAL FEET
R-4340-A	Beehive	1.5	6.2
R-4340-B	Beehive	1.1	6.0
R-4340-C	Beehive	1.2	6.0
R-4340-F	Beehive	1.6	6.5

CATALOG NUMBER	GRATE TYPE	SQ. FT. OPEN	WEIR PERIMETER LINEAL FEET
R-4340-F1	Beehive	0.7	4.5
R-4340-G	Beehive	0.6	5.0
R-4340-H	Beehive	0.5	4.5



Illustrating R-4340-A



Illustrating R-4340-B

May be used in vitrified clay pipe bell, on a concrete catch basin, or in a cast iron frame as shown. Effective where debris may interfere with drainage, such as at a roadside or in a median strip.

Bell and spigot vitrified clay and concrete pipe are made under many specifications and dimensions vary. Check the grate sizes in the table to be sure they will fit the pipe you are using.

Catalog No.	Dimensions in inches							
	O Dia.	O.D. Lugs	Dia. Bhv.	Ht. Bhv.	No. Lugs	Size Bars	Size Op.	Pipe Size
R-4340-A	34	26 1/4	23 7/8	6	*	1 1/2	1	24
R-4340-B ≠	33	23	23	3	6	2	1 1/2	24
R-4340-C	33	29	23	5 3/4	4	1	1 1/4	24
R-4340-F	33	28	25	5	4	1	1	24
R-4340-F1 **	25 1/2	21 3/4	17	3	4	1	1	18
R-4340-G **	28	18	19	3	3	1 3/4	2	15
R-4340-H	25	15	17	3	3	1 5/8	1 3/4	12

* Furnished with ring instead of lugs.

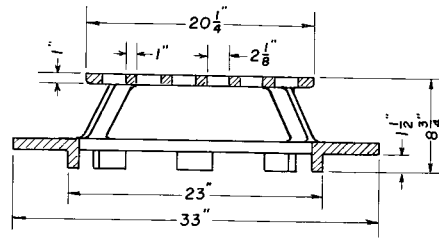
** Frame not available.

≠ Grate flange lettered "DUMP NO WASTE - DRAINS TO RIVER"

R-4341-A Ditch Grate, Stool Type

Heavy Duty

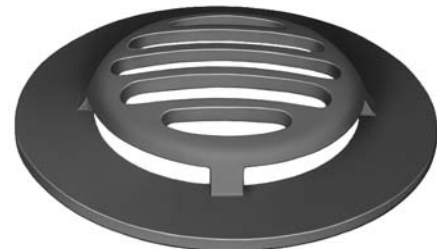
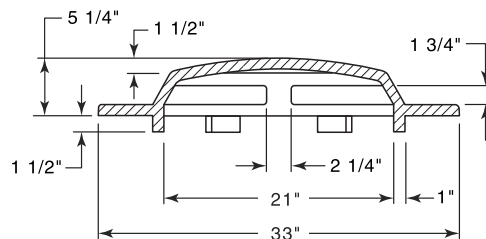
CATALOG NUMBER	GRATE TYPE	SQ. FT. OPEN	WEIR PERIMETER LINEAL FEET
R-4341-A	Beehive	2.5	6.0



R-4342 Ditch Grate, Stool Type

Light Duty

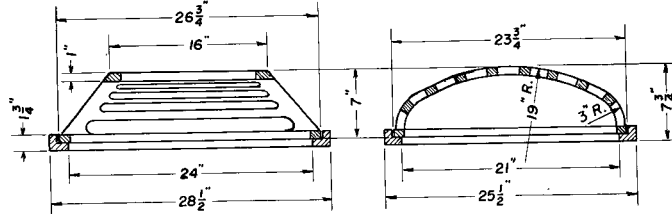
CATALOG NUMBER	GRATE TYPE	SQ. FT. OPEN	WEIR PERIMETER LINEAL FEET
R-4342	Beehive	2.0	6.0



■ Note: When specifying/ordering grates, refer to "Choosing the proper inlet grate" on pages 117-118.
 For a complete listing of FREE OPEN AREAS and WEIR PERIMETERS of all NEENAH grates, refer to pages 306-311.

R-4343
Ditch Grate, Frame

Light Duty

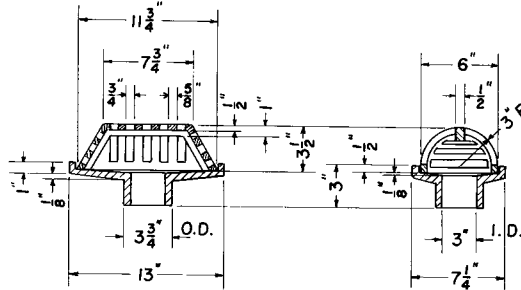


CATALOG NUMBER	GRATE TYPE	SQ. FT. OPEN	WEIR PERIMETER LINEAL FEET
R-4343	Beehive	2.4	8.4

R-4344
Railroad Bridge Drain Grate, Frame

Light Duty

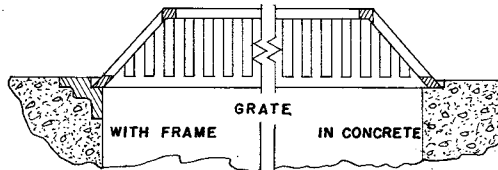
CATALOG NUMBER	GRATE TYPE	SQ. FT. OPEN	WEIR PERIMETER LINEAL FEET
R-4344	Beehive	0.2	2.9



R-4345 to R-4347 Series
Square Beehive Drainage Grate, Frame

Light Duty

CATALOG NUMBER	GRATE TYPE	SQ. FT. OPEN	WEIR PERIMETER LINEAL FEET
R-4345	Beehive	2.0	8.6
R-4346	Beehive	2.0	8.6
R-4347	Beehive	2.0	8.6



For off-roadway construction.

These castings are suitable for use at low points of large graded areas and will drain a substantial volume of surface water from all sides.

Catalog No.	Grate Overall	Dimensions in inches			
		Grate Top Size	Frame Overall	Height Grate	Height Frame
R-4345	26 x 26	12 x 12	-	6 1/4	-
R-4346	26 x 26	12 x 12	30 x 30	6 1/4	4
R-4347	27 5/8 x 27 5/8	12 x 12	-	6 1/4	-

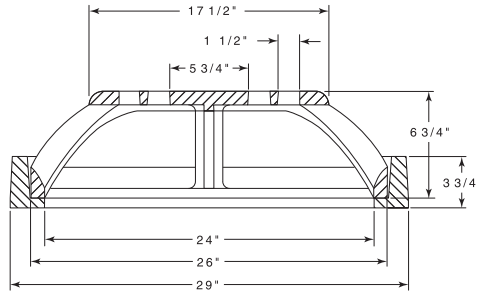
DRAINAGE GRATES 7

■ Note: When specifying/ordering grates, refer to "Choosing the proper inlet grate" on pages 117-118.
 For a complete listing of FREE OPEN AREAS and WEIR PERIMETERS of all NEENAH grates, refer to pages 306-311.

R-4349-C Median Drain Frame, Grate

Heavy Duty

CATALOG NUMBER	GRATE TYPE	SQ. FT. OPEN	WEIR PERIMETER LINEAL FEET
R-4349-C	Beehive	2.4	6.9

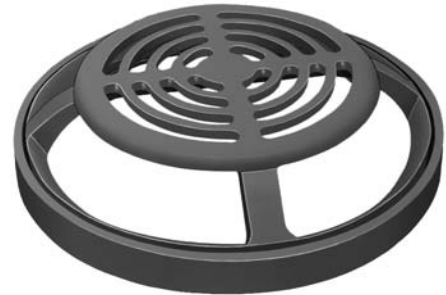
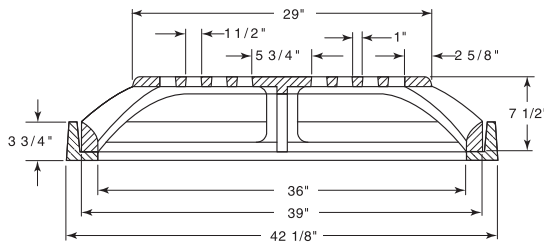


For use in narrow median on divided highways, freeways or expressways. Provides large capacity drainage when required during heavy rainfalls.

R-4349-D Median Drain Frame, Grate

Heavy Duty

CATALOG NUMBER	GRATE TYPE	SQ. FT. OPEN	WEIR PERIMETER LINEAL FEET
R-4349-D	Beehive	5.4	10.2



For use in narrow median on divided highways, freeways or expressways. Provides large capacity drainage when required during heavy rainfalls.

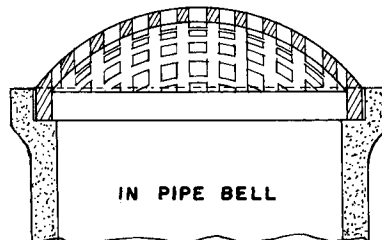
DRAINAGE GRATES

7

R-4350 Series Beehive Grate for Sewer Pipe Bell

Heavy Duty

CATALOG NUMBER	GRATE TYPE	SQ. FT. OPEN	WEIR PERIMETER LINEAL FEET
R-4350-1	Beehive	0.3	2.7
R-4350-A	Beehive	0.3	3.1
R-4350-B	Beehive	0.4	3.9
R-4350-C	Beehive	0.6	4.8
R-4350-D	Beehive	1.0	5.8
R-4350-E	Beehive	1.7	7.6



Bell and spigot vitrified clay and concrete pipe are made under many specifications and dimensions vary. Check the grate sizes in the table to be sure they will fit the pipe you are using.

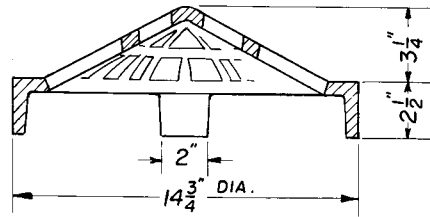
Dimensions in inches				
Catalog No.	Pipe Size	Diameter	Thickness at Rim	Overall Height
R-4350-1	8	10 3/8	2	4
R-4350-A	10	12	1	4
R-4350-B	12	14 3/4	2 1/2	5 1/2
R-4350-C	15	18 1/4	2 1/2	6 1/4
R-4350-D	18	22	3	7 1/2
R-4350-E	24	29	3	9

■ Note: When specifying/ordering grates, refer to "Choosing the proper inlet grate" on pages 117-118.
 For a complete listing of FREE OPEN AREAS and WEIR PERIMETERS of all NEENAH grates, refer to pages 306-311.

R-4351-B
Beehive Grate

Heavy Duty

CATALOG NUMBER	GRATE TYPE	SQ. FT. OPEN	WEIR PERIMETER LINEAL FEET
R-4351-B	Beehive	0.5	3.9

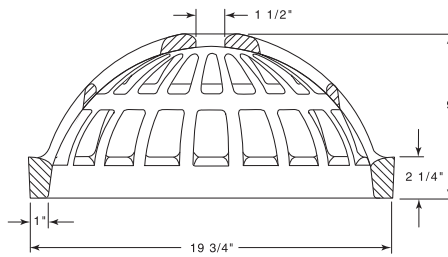


For bell of 12" bell and spigot pipe. Since pipe is made under many specifications, there is a wide variation in dimensions. Check the grate size as shown on the drawing to be sure it will fit the pipe you are using.

R-4351-C
Beehive Grate

Heavy Duty

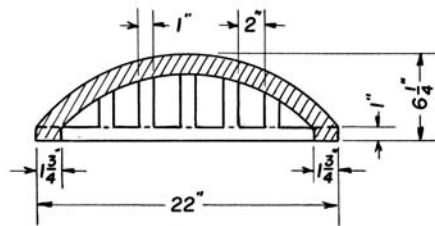
CATALOG NUMBER	GRATE TYPE	SQ. FT. OPEN	WEIR PERIMETER LINEAL FEET
R-4351-C	Beehive	1.2	5.2



R-4351-D
Beehive Grate

Heavy Duty

CATALOG NUMBER	GRATE TYPE	SQ. FT. OPEN	WEIR PERIMETER LINEAL FEET
R-4351-D	Beehive	1.6	5.8



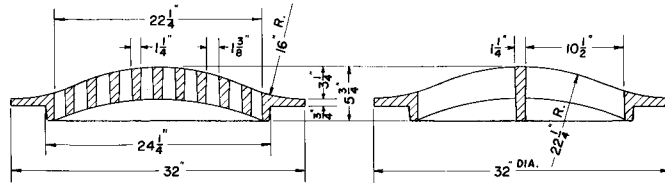
For bell of 18" tile or concrete bell and spigot pipe. Since pipe is made under manufacturers specifications, there is a wide variation in dimensions. Check the grate size as shown on the drawing to be sure it will fit the pipe you are using.

DRAINAGE GRATES 7

■ Note: When specifying/ordering grates, refer to "Choosing the proper inlet grate" on pages 117-118.
 For a complete listing of FREE OPEN AREAS and WEIR PERIMETERS of all NEENAH grates, refer to pages 306-311.

R-4352
Beehive Grate

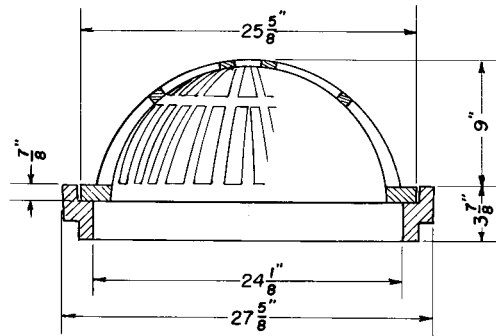
Heavy Duty



CATALOG NUMBER	GRATE TYPE	SQ. FT. OPEN	WEIR PERIMETER LINEAL FEET
R-4352	Beehive	1.3	5.8

R-4353
Beehive Grate, Frame

Light Duty

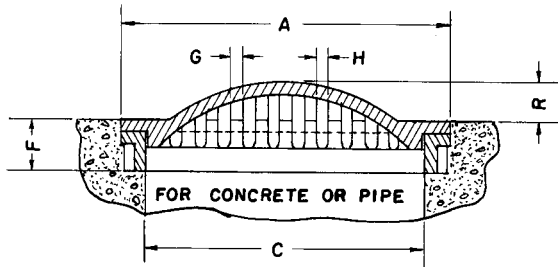


CATALOG NUMBER	GRATE TYPE	SQ. FT. OPEN	WEIR PERIMETER LINEAL FEET
R-4353	Beehive	1.8	6.7

Also available with 2 7/8" tall frame, if requested.

R-4360 Series
Beehive Grate, Frame

Light Duty



CATALOG NUMBER	GRATE TYPE	SQ. FT. OPEN	WEIR PERIMETER LINEAL FEET
R-4360-A	Beehive	0.6	4.3
R-4360-B	Beehive	0.8	4.7
R-4360-C	Beehive	1.4	4.5
R-4360-D	Beehive	0.7	6.3

Various kinds and types of pipe are made under many specifications and dimensions vary. Check the grate sizes in the table to be sure the grates and frames will fit the pipe you are using.

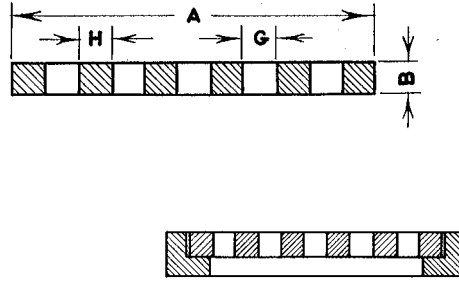
Catalog No.	Dimensions in inches					
	A	C	F	G	H	R
R-4360-A	18 1/4	16 1/4	2 3/4	1	1/2	1 5/8
R-4360-B	22	18	2 3/4	1	1/2	1 3/4
R-4360-C	23 1/4	17	3 1/2	2	1 1/2	1 3/4
R-4360-D	28 1/2	24	3 5/8	1	1	3

■ Note: When specifying/ordering grates, refer to "Choosing the proper inlet grate" on pages 117-118.
 For a complete listing of FREE OPEN AREAS and WEIR PERIMETERS of all NEENAH grates, refer to pages 306-311.

R-4370 Series Round Drainage Grate

Heavy Duty

CATALOG NUMBER	GRATE TYPE	SQ. FT. OPEN	WEIR PERIMETER LINEAL FEET
R-4370-1	C	0.1	1.7
R-4370-2	G	0.2	2.5
R-4370-3	E	0.4	3.9
R-4370-4	G	0.6	3.9
R-4370-5	G	0.8	4.7
R-4370-6	G	0.8	5.1
R-4370-7	G	0.8	5.2
R-4370-8	E	1.0	5.5
R-4370-9	C	1.3	5.8
R-4370-10	A	1.1	5.8
R-4370-12	F	0.9	5.8
R-4370-13	G	1.3	5.8
R-4370-15	D	1.0	5.9
R-4370-17	D	1.0	6.0
R-4370-18	E	1.3	6.0
R-4370-21	D	0.9	6.0
R-4370-22	D	1.1	6.0
R-4370-23	H	0.9	6.3
R-4370-25	G	1.9	7.6
R-4370-26	G	2.8	8.6
R-4370-27A	G	2.4	9.9



Illustrating R-4370-12

Most grates listed can be furnished with cast iron angle frame when specified.
 Frame is of 1/2" metal.

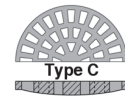
Catalog No.	Dimensions in inches				Type
	A	B	G	H	
R-4370-1	6 3/8	1 1/4	1 x 1	1/2	C
R-4370-2	9 1/2	2 1/2	1 1/2 x 3 1/2	5/8	G
R-4370-3	15	1 1/4	1 x 12 1/4	1	E
R-4370-4	15	1 1/4	3/4 x 2 1/4	3/4	G
R-4370-5	18	1 1/2	1 x 4 1/2	1 1/4	G
R-4370-6 *	19 1/2	1 1/2	3/4 x 5 1/4	3/4	G
R-4370-7	20	1 3/8	2 x 2	1	G
R-4370-8	21	1 1/4	3/4 x 19 1/2	3/4	E
R-4370-9	22	1 1/2	1 1/8	1	C
R-4370-10	22	1 1/2	1 1/4	1	§ A
R-4370-12	22	1 1/2	1 3/8 x 5	1	F
R-4370-13 *	22	1 1/2	2 x 6	1 1/4	G
R-4370-15 **	22 1/2	1 3/4	1 1/8	1	D
R-4370-17	22 3/4	1 3/4	1 1/2	1	D
R-4370-18	22 3/4	1 3/4	1 1/2	7/8	E
R-4370-21	23	1 1/2	1 1/4	1	D
R-4370-22 **	23	1 3/4	1	1 1/8	D
R-4370-23	24	1 1/2	2 1/4 x 2 1/4	1 1/2	≠ H
R-4370-25	29	3	3/4	1	G
R-4370-26	33	2	1 1/2	1	G
R-4370-27A	38	1 1/2	1	1	G

* Light Duty.

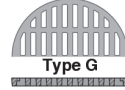
** Frame not available.

§ Alternate Type G or Type C grates available.

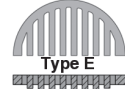
≠ Alternate Type G grate available.



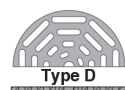
Type C



Type G



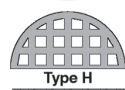
Type E



Type D



Type F Concave

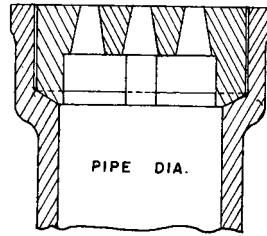


Type H

■ Note: When specifying/ordering grates, refer to “Choosing the proper inlet grate” on pages 117-118.
 For a complete listing of FREE OPEN AREAS and WEIR PERIMETERS of all NEENAH grates, refer to pages 306-311.

R-4373 Series Soil Pipe Grate

Heavy Duty



Catalog No.	Dimensions in inches		
	Grate Diameter	Depth of Grate	Pipe Size
R-4373-2 *	2 5/8	2 1/2	2
R-4373-3	3 3/4	2 1/2	3
R-4373-4	4 3/4	2 7/8	4
R-4373-6	6 3/4	3	6
R-4373-8	9	3 1/2	8
R-4373-10	11	3 1/2	10
R-4373-12	13 1/8	4 1/4	12
R-4373-15	16	4 1/4	15

* Slotted openings

R-4375 Series Perforated Drain Lids

Light Duty



Holes standard as shown; variations as specified. Since bell and spigot pipe are made under many specifications, dimensions may vary. Check cover sizes in the table to be sure they will fit the pipe you are using.

Catalog No.	Dimensions in inches				
	Diameter	Thickness	Number of Holes	Dia. Holes	Pipe Bell Size
R-4375-A	7 1/8	1/2	12	3/4	4
R-4375-B	9 1/2	1/2	12	3/4	6
R-4375-F	21 1/4	5/8	24	3/4	15
R-4375-G	25 1/2	5/8	24	3/4	18
R-4375-K *	33 1/2	3/4	36	1	24

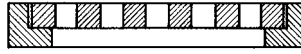
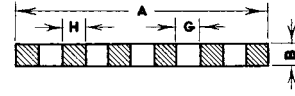
* Lid has six 2" tall lugs on bottom

■ Note: When specifying/ordering grates, refer to "Choosing the proper inlet grate" on pages 117-118.
 For a complete listing of FREE OPEN AREAS and WEIR PERIMETERS of all NEENAH grates, refer to pages 306-311.

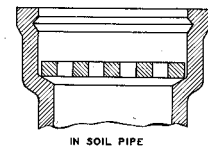
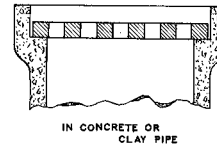
R-4380 Series Flat Bar Drainage Grate

Light Duty

CATALOG NUMBER	GRATE TYPE	SQ. FT. OPEN	WEIR PERIMETER LINEAL FEET
R-4380-AA1	E	2.8 sq. in.	1.0
R-4380-A	E	3.7 sq. in.	1.1
R-4380-A1	E	6.0 sq. in.	1.2
R-4380-B1	E	4.8 sq. in.	1.3
R-4380-1	E	5.4 sq. in.	1.4
R-4380-3	E	6.0 sq. in.	1.6
R-4380-4	E	0.1	2.1
R-4380-4A1	E	0.1	2.2
R-4380-4A	E	0.2	2.6
R-4380-6	G	0.2	2.8
R-4380-7	G	0.3	3.1
R-4380-8	E	0.3	3.3
R-4380-9	E	0.4	3.7
R-4380-10	E	0.5	3.9
R-4380-11	E	0.5	3.9
R-4380-12	E	0.6	4.0
R-4380-13	G	0.7	4.2
R-4380-13A	E	0.9	4.7
R-4380-14	E	0.7	4.7



CATALOG NUMBER	GRATE TYPE	SQ. FT. OPEN	WEIR PERIMETER LINEAL FEET
R-4380-15	E	0.6	4.7
R-4380-16	E	0.8	5.0
R-4380-17	E	0.8	5.0
R-4380-18	G	0.7	5.2
R-4380-21	G	1.3	6.3
R-4380-22	G	1.5	7.0
R-4380-23	G	1.1	7.3
R-4380-24	G	1.7	7.9
R-4380-25	G	2.5	8.4
R-4380-26	G	2.7	8.8

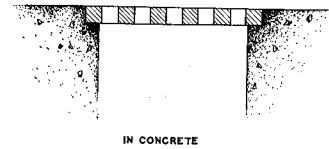


Angle frame as shown can be furnished with many grates, as noted.
 Special frame anchors furnished on request.

Dimensions in inches

Catalog No.	A	B	G	H
R-4380-AA1	3 3/4	3/8	3/8	3/8
R-4380-A	4	1/2	3/8	3/8
R-4380-A1 *	4 3/4	3/8	1/2	3/8
R-4380-B1	5	1/2	1/2	1/2
R-4380-1	5 1/2	1/2	1/2	1/2
R-4380-3 *	6	1	1/2	3/4
R-4380-4 *	8	1/2	5/8	5/8
R-4380-4A1	8 1/2	3/4	1	1
R-4380-4A *	10	3/4	1/2	1/2
R-4380-6	10 1/2	3/4	3 1/2 x 1 1/2	3/4
R-4380-7	11 3/4	1	3/4 x 4 1/4	1
R-4380-8 *	12 1/2	1	1	1
R-4380-9 *	14 1/4	3/4	7/8	15/16
R-4380-10 *	15	5/8	3/4	3/8
R-4380-11	15	1	5/8	3/4
R-4380-12	15 1/4	1/2	5/8	3/8
R-4380-13 *	16	1	1 1/8	1
R-4380-13A	17 3/4	1/2	1 x 3 1/2	1/2
R-4380-14 *	18	3/4	7/8	3/4
R-4380-15 *	18	1	1 1/8	1 1/4
R-4380-16 *	19	1/2	3/4	1
R-4380-17 *	19	1	3/4	1/2
R-4380-18 *	20	1	2 x 2	1 1/4
R-4380-21 *	24	3/4	1/2	1/2
R-4380-22 *	26 5/8	3/4	7/8	3/4
R-4380-23	28	1	2 1/8 x 4	2
R-4380-24	30	3/4	7/8	3/4
R-4380-25 *	32	3/4	1 3/8	1
R-4380-26	33 1/2	3/4	1 3/8	1
R-4380-32	39 3/4	3 1/2	1	1

* Frame available on request

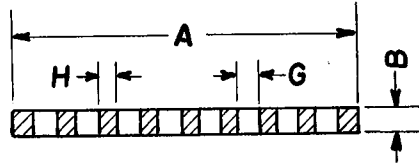


■ Note: When specifying/ordering grates, refer to "Choosing the proper inlet grate" on pages 117-118.
 For a complete listing of FREE OPEN AREAS and WEIR PERIMETERS of all NEENAH grates, refer to pages 306-311.

R-4385 Series Bar Grates

Light Duty

CATALOG NUMBER	GRATE TYPE	SQ. FT. OPEN	WEIR PERIMETER LINEAL FEET
R-4385-B	E	0.1	2.1
R-4385-C	E	0.3	2.7
R-4385-E	E	0.5	3.9
R-4385-F	E	0.5	4.8
R-4385-G	E	1.0	5.8
R-4385-H	G	1.6	7.6
R-4385-J	G	2.5	8.6
R-4385-K	G	2.7	9.4

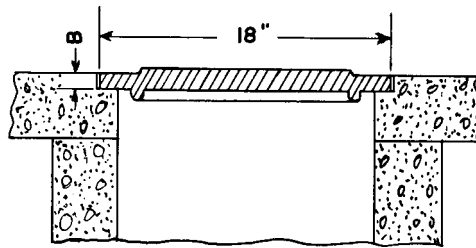


For heavy traffic grates, see the R-4030 Series. Check the grate sizes in the table to be sure they will fit the pipe you are using.

Catalog No.	Pipe Size	Dimensions in inches			
		A	B	G	H
R-4385-B	6	8	1/2	5/8	9/16
R-4385-C	8	10 3/8	1/2	1/2	7/16
R-4385-D	10	12 1/2	5/8	1/2	1/2
R-4385-E	12	14 3/4	3/4	7/8	7/8
R-4385-F	15	18 1/4	7/8	5/8	3/4
R-4385-G	18	22	1	1	1
R-4385-H	24	29	1 1/4	1 5/16	3/4
R-4385-J	27	32 3/4	1 1/2	1 5/16	3/4
R-4385-K	30	36	1 1/2	1 1/4	1

R-4388 Series Cast Iron Lid

Light Duty



Illustrating R-4388-A

Catalog No.	Dimensions in inches	
	B	Notes
R-4388-A	1/4	Solid
R-4388-B	1/2	Solid
R-4388-C	1/4	Grated
R-4388-E	1/2	*

* Six 1" holes, 18 1/4" diameter



Illustrating R-4388-C

■ Note: When specifying/ordering grates, refer to "Choosing the proper inlet grate" on pages 117-118.
 For a complete listing of FREE OPEN AREAS and WEIR PERIMETERS of all NEENAH grates, refer to pages 306-311.

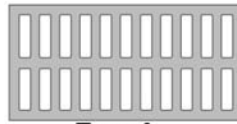
R-4400 to R-4899 Series Square and Rectangular Drainage Grates

The gratings in this series are rated heavy duty when supported on all four sides.

Other special sizes quoted on request in the event none of the standards shown in this series meet your requirements. In ordering replacement grates to be used on existing catch basins, be sure to specify the exact size of opening in which the grate will be used.

Many of the grates in this series can be adapted to trench frames with support on two sides. Most are qualified as heavy duty when the short dimension spans the trench.

Advise loading requirements so we can assist you with your choice.



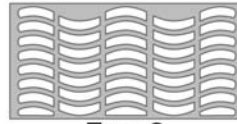
Type A



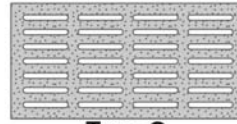
Type B



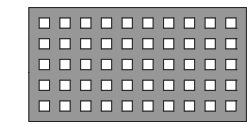
Type C



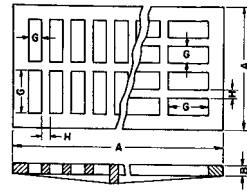
Type S



Type Q



Type H



Catalog No.	Dimensions in inches				Type	Catalog No.	Dimensions in inches				Type
	A	B	G	H			A	B	G	H	
Square - Heavy Duty						Rectangular - Heavy Duty					
R-4400-A *	8 x 8	1	1 x 5 1/4	1	A	R-4884-A * **	36 x 36	1 3/4	2 x 4	1 3/8	C
R-4401 *	8 x 8	1	3/8 x 3	3/8	A	R-4389-O	6 x 12	1 1/4	3/4 x 4 1/2	1	B
R-4408 *	10 1/4 x 10 1/4	1	7/8 x 8 1/4	1	B	R-4390	6 x 24	1	3/4 x 2 1/8	1	B
R-4441-1 *	12 x 12	1	3/8 x 4 1/2	1	Q	R-4403	8 x 14	1	1 1/2 x 5 7/8	1/2	A
R-4511 *	14 x 14	1 1/2	1 1/2 x 5 1/8	1 1/8	A	R-4404-C	8 x 24	1	1 1/16 x 6	1	B
R-4550 *	15 x 15	1 1/4	3 1/2 x 3 1/2	3/4	H	R-4406	8 x 24	1 3/4	1 5/16 x 2 5/8	1	B
R-4552 *	16 x 16	1 3/4	1 1/4 x 6 1/4	1 1/4	A	R-4406-1	8 x 24	1 3/4	1 x 5	3/4	A
R-4557 *	16 x 16	1 1/4	1 3/16 x 3 3/8	3/4	A	R-4406-2	8 x 24	1 3/4	1 x 2	1	C
R-4558 *	17 5/8 x 17 5/8	1 1/4	1 x 5	1/2	C	R-4406-C	9 1/4 x 23 7/8	1	1 x 2 7/8	1	A
R-4660 *	18 x 18	1 1/2	3 x 4 1/2	1 1/4	C	R-4406-P	9 x 23 7/8	1 1/2	1/4 x 2 5/16	1	P
R-4662	19 3/4 x 19 3/4	2 1/2	1 3/8 x 8 1/2	1	A	R-4407-2A	9 1/2 x 24	1 3/4	1 x 7 1/2	1	B
R-4720 *	20 x 20	1 3/4	1 3/8 x 3 1/2	1 1/4	C	R-4409	10 x 17 3/4	1 1/2	1 x 3 1/2	1	A
R-4721-A *	21 x 21	1 3/4	1 1/2 x 8	1 1/4	A	R-4409-A	10 x 24	1 3/4	1 1/4 x 4 3/4	1	C
R-4725 *	21 x 21	2	3 x 3	1	H	R-4409-C *	10 x 24	1 3/4	1 x 7	1	B
R-4760 *	22 x 22	1 3/4	3 x 5 3/4	1	C	R-4409-E *	10 x 24	1 3/4	1 x 3 1/2	1	A
R-4765	23 x 23	2	1 x 6 1/2	1	A	R-4409-G	10 x 24	1 1/2	2 x 8	1	B
R-4808-A *	24 x 24	2	1/2 x 4 1/2	1 5/8	Q	R-4421 *	10 x 40	1 1/8	1 1/4 x 8 1/2	1	C
R-4810 *	24 x 24	2	1 3/4 x 6	1 1/4	C	R-4423-A	10 1/4 x 48	1 5/8	1 1/2 x 3 1/2	1	A
R-4820 * †	24 x 24	2	1 3/4 x 5 7/8	1 3/8	C	R-4424	10 1/2 x 23 1/8	1 3/4	2 x 2	1	H
R-4826 * *	24 x 24	2	1 x 6	1 1/4	A	R-4430-1	11 x 23 7/8	1 1/8	1/4 x 3 5/16	1	P
R-4832 *	24 x 24	1 5/8	1 1/16 x 4 3/4	1	C	R-4430-A	11 x 24	1 1/2	3/4 x 4 1/8	3/4	A
R-4832-B *	26 x 26	1 3/4	1 1/16 x 4	1	C	R-4430-B	11 1/2 x 24	1 1/2	1 x 6 5/8	1	C
R-4833 *	26 x 26	2	2 x 7	1	A	R-4435-1	11 7/8 x 14	2	1 x 5 1/2	1	C
R-4836	26 x 26	2	1 1/8 x 4 3/4	1 1/4	C	R-4443	12 x 14	1 3/4	1 1/2 x 5 1/4	1 1/4	A
R-4850 *	27 x 27	2	2 1/2 x 7 1/2	1	C	R-4449 *	12 x 24	1 1/2	1 1/2 x 4 1/4	1	A
R-4852 *	27 x 27	2	1 1/2 x 5	1	C	R-4450 *	12 x 24	1 3/4	1 x 4 1/2	1	A
R-4852-A *	27 x 27	1	1 1/2 x 5	1	C	R-4450-A *	12 x 24	1 3/4	2 x 2	1	H
R-4859-C * †	27 1/2 x 27 1/2	1	2 x 7	1	A	R-4451 *	12 x 24	2	1 1/2 x 3 3/4	1	C
R-4859-Q * †	27 1/2 x 27 1/2	1	3/8 x 7	1 1/8	Q	R-4454	12 x 26	1 1/2	1/2 x 11 1/2	1/2	C
R-4859-S * †	27 1/2 x 27 1/2	1	1 1/2 x 4 3/4	1	S	R-4460 *	12 x 30	2	1 1/4 x 4	1	A
R-4871 * † §	27 1/2 x 27 1/2	1	2 x 24	1	B	R-4462 *	12 x 35 3/4	1 1/2	3/4 x 9	1	B
R-4880 *	28 x 28	2	1 1/2 x 7 1/4	1	C	R-4470 *	12 x 48	1 3/4	1 x 4 1/2	1	A
R-4880-C *	30 x 30	1 1/2	1 1/4 x 5 7/8	1 1/4	C	R-4523	14 x 23 7/8	1	1 1/16 x 5 1/2	1	A
R-4882 *	34 x 34	2	2 x 14 1/2	1 1/8	A	R-4525 *	14 x 24	2	1 x 5 1/2	1	A
R-4882-A *	34 x 34	2	1 x 9	1 1/8	A	R-4530	14 1/2 x 22	2	1 1/2 x 5 1/2	1 1/4	A

* Angle frame available

** Grate in two pieces

*** Grate in three pieces

§ Grate lettered "DUMP NO WASTE DRAINS TO RIVER"

* Light Duty

† Convex

‡ Meets traffic load called for in AA-6005 of 25,000# proof load

DRAINAGE GRATES 7

■ Note: When specifying/ordering grates, refer to "Choosing the proper inlet grate" on pages 117-118.
 For a complete listing of FREE OPEN AREAS and WEIR PERIMETERS of all NEENAH grates, refer to pages 306-311.

R-4400 to R-4899 Series Square and Rectangular Drainage Grates continued...

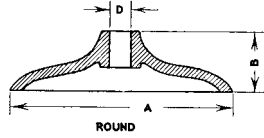
Catalog No.	Dimensions in inches				Type	Catalog No.	Dimensions in inches				Type
	A	B	G	H			A	B	G	H	
Rectangular - Heavy Duty						Rectangular - Heavy Duty					
R-4531	14 1/2 x 23 7/8	1	1 x 5	1	A	R-4730 •	19 1/2 x 32	1 1/2	2 x 5	1	A
R-4540	14 1/2 x 26 1/2	2	2 1/4 x 4	1	C	R-4731 •	19 1/2 x 39	1 1/2	2 x 4 1/2	1	C
R-4541 *	14 1/2 x 28	1 3/4	1 1/4 x 5	1 1/4	A	R-4732	19 1/2 x 39	1 3/4	1 x 7 1/2	1	A
R-4544	14 1/2 x 37 3/4	1 3/4	2 x 5 3/8	1 1/4	A	R-4735	20 x 23 7/8	1	1 1/16 x 8 1/4	1	A
R-4545	14 1/2 x 48	1 3/4	1 1/4 x 5	1 1/4	A	R-4736 *	20 x 24	2	1 1/2 x 2 1/2	1 1/4	C
R-4548	15 x 20 1/2	1 1/2	2 x 2	3/4	H	R-4738 *	20 x 24	2	1 x 5	1	A
R-4570-1	15 x 23	1 3/4	1 1/2 x 5 1/2	1 1/8	A	R-4739 *	20 x 24	2	1 1/8 x 4 3/4	1	C
R-4570-2	15 x 23 7/8	1 1/2	1 x 6	1	A	R-4740 *	20 x 28 1/2	2	1 3/7 x 8	1	C
R-4573 *	15 x 30	2 1/2	1 1/8 x 5 1/2	1	A	R-4750 *	20 x 30	2	1 3/7 x 6	1	C
R-4575-A *	15 x 36	1 3/4	1 13/16 x 6 1/2	3/4	A	R-4750-1	20 x 48	2	1 1/2 x 5	1	A
R-4579	15 1/8 x 23	1 1/2	1 3/8 x 5 1/2	1 3/8	A	R-4751	20 1/2 x 27	2	1 3/4 x 5 1/2	1	C
R-4583	15 1/2 x 22 1/4	1 3/4	1 5/8 x 5 1/2	1 3/8	A	R-4752	20 1/2 x 36	1 7/8	2 x 5 3/4	1 1/8	C
R-4584	15 1/2 x 36	1 3/4	1 1/2 x 5 1/4	1 3/8	A	R-4755-B *	21 x 42	1 1/2	1 1/2 x 5 1/2	1	A
R-4585	15 1/2 x 39	1 3/4	1 7/8 x 5 7/8	1 1/4	A	R-4755-C *	21 x 42	1 1/2	1 1/2 x 5 7/8	1	C
R-4586 *	15 3/4 x 36	1 3/4	1 1/2 x 5 1/4	1 3/8	A	R-4759	22 x 23	1 3/4	1 1/2 x 6	1	C
R-4600	16 x 23	2	1 1/4 x 3 3/4	1	A	R-4762 *	22 x 30	1 1/2	2 x 6 1/4	1	C
R-4603-A *	16 x 24	1 1/8	3/4 x 5 1/2	1	A	R-4780 *	22 x 37	2	2 x 8	1	C
R-4604	16 x 24	1 1/2	2 x 4	7/8	C	R-4781 *	22 x 48	2 1/2	1 5/8 x 5 3/8	1 1/4	C
R-4604-C *	16 x 24	2	2 x 5	2	A	R-4795 *	22 1/2 x 45	1 1/2	2 x 6	1	A
R-4604-D	16 x 24	2 1/2	2 1/2 x 6 5/8	3/4	A	R-4798	23 1/4 x 36 1/2	2 3/4	1 1/2 x 7 1/4	1	C
R-4608	16 1/2 x 19 3/4	1 1/2	1 1/4 x 6	1	A	R-4821-A *	23 7/8 x 26	2	1 9/16 x 4 15/16	1 1/4	C
R-4610	16 1/2 x 22	1 3/4	1 1/2 x 4	1	A	R-4825 *	24 x 30	1 1/2	1 1/2 x 4 1/4	1 1/4	C
R-4620	17 x 19	2	1 1/4 x 4 1/4	1 1/8	A	R-4825-A *	24 x 30	2 1/4	1 1/4 x 4 3/4	1	A
R-4630	17 x 20	1 1/2	1 1/4 x 6 1/2	1	C	R-4825-B *	24 x 30	2 1/4	1 1/2 x 6	1	C
R-4632	17 x 21	2	1 3/8 x 8 3/4	1	C	R-4828 *	24 x 33	2 1/4	1 x 4 1/2	1	A
R-4640	17 x 21 1/2	1 3/4	2 1/2 x 4 1/4	1	A	R-4829 *	24 x 33	2 1/4	1 1/2 x 6 1/2	1 1/4	C
R-4641	17 x 23 7/8	1	1 1/16 x 7	1	A	R-4837	24 x 35	2 1/2	1 1/2 x 6 1/2	1 1/2	A
R-4641-A *	17 x 24	2	1 x 7	7/8	A	R-4839 *	24 x 35 7/8	1 3/4	7/8 x 9 3/4	1	A
R-4641-C *	17 x 24	2	1 x 6 1/2	1	C	R-4840 *	24 x 36	2	2 x 4 3/4	1	C
R-4641-F *	17 x 34	1 1/2	1 1/2 x 6 3/4	1	A	R-4843 *	24 x 36	1 3/4	1 3/4 x 6	1	A
R-4649	17 1/4 x 24	1 3/4	1 x 6 1/2	1	A	R-4853	24 x 39	2 1/2	1 3/4 x 5 3/4	1 5/8	A
R-4652 *	17 3/4 x 29 3/4	2	1 1/2 x 4 1/2	1 1/8	A	R-4853-A	24 x 45	3	1 1/2 x 6 1/4	1 1/4	A
R-4670-A *	18 x 24	1 1/2	1 1/8 x 6 3/4	1 1/8	A	R-4853-B1	24 x 51	3	1 1/2 x 5	1 1/4	C
R-4671 *	18 x 24	2	1 x 6 1/2	1 1/16	A	R-4855	26 x 30	2	1 1/2 x 5	1 1/4	A
R-4672 *	18 x 24	2	1 3/8 x 4 1/2	1 1/8	C	R-4857	26 x 45	2	1 1/2 x 5 1/2	1	A
R-4689 *	18 x 27 1/4	2	2 x 6 3/4	1	C	R-4890 *	28 x 37	2	1 3/4 x 7 5/8	1 1/4	C
R-4692-A	18 x 34	2 1/4	1 7/16 x 8	1	C	R-4891 **	30 x 48	1 1/2	1 1/2 x 4 1/4	1 1/4	A
R-4698 *	18 x 36	1 3/4	2 x 4	1 3/8	A	R-4893 ***	30 x 78	2	1 1/2 x 5	1 1/4	C
R-4710 *	18 x 36	2	1 3/4 x 6 1/4	1 1/4	C	R-4893-B *	32 x 34	2	1 x 2	1	C
R-4711 *	18 x 39	2	1 1/4 x 5 1/2	1 1/4	C	R-4894 *	33 x 36	2	1 1/2 x 6 1/2	1 1/4	C
R-4718	18 3/4 x 36 3/4	2	2 x 8	1	A	R-4895-2 **	36 x 66	2	1 1/2 x 6 1/2	1 1/4	A

* Angle frame available
 ** Grate in two pieces
 *** Grate in three pieces
 § Grate lettered "DUMP NO WASTE DRAINS TO RIVER"

• Light Duty
 † Convex
 ‡ Meets traffic load called for in AA-6005 of 25,000# proof load

**R-4905 Series
Sign and Marker Bases**

Heavy Duty



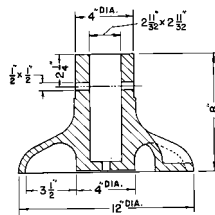
Bases only furnished in cast iron. Special lettering available at additional cost. Cored hole for sign post is standard. Pipe tap is available if specified.

Dimensions in inches			
Catalog No.	A	B	D *
R-4905-B	15	3	1 1/2
R-4905-C	20	5	1 3/4

* Dimensions revised if specified.

**R-4907
Base Casting for Telescoping Post**

Heavy Duty



Base furnished with three holes for rigid anchorage. Round base has opening for square telescoping post. Lettering on base as shown or special lettering if specified. Also available for use with 2" diameter galvanized pipe.

R-4926-29 Series Downspout Shoes (Rainwater Leaders)

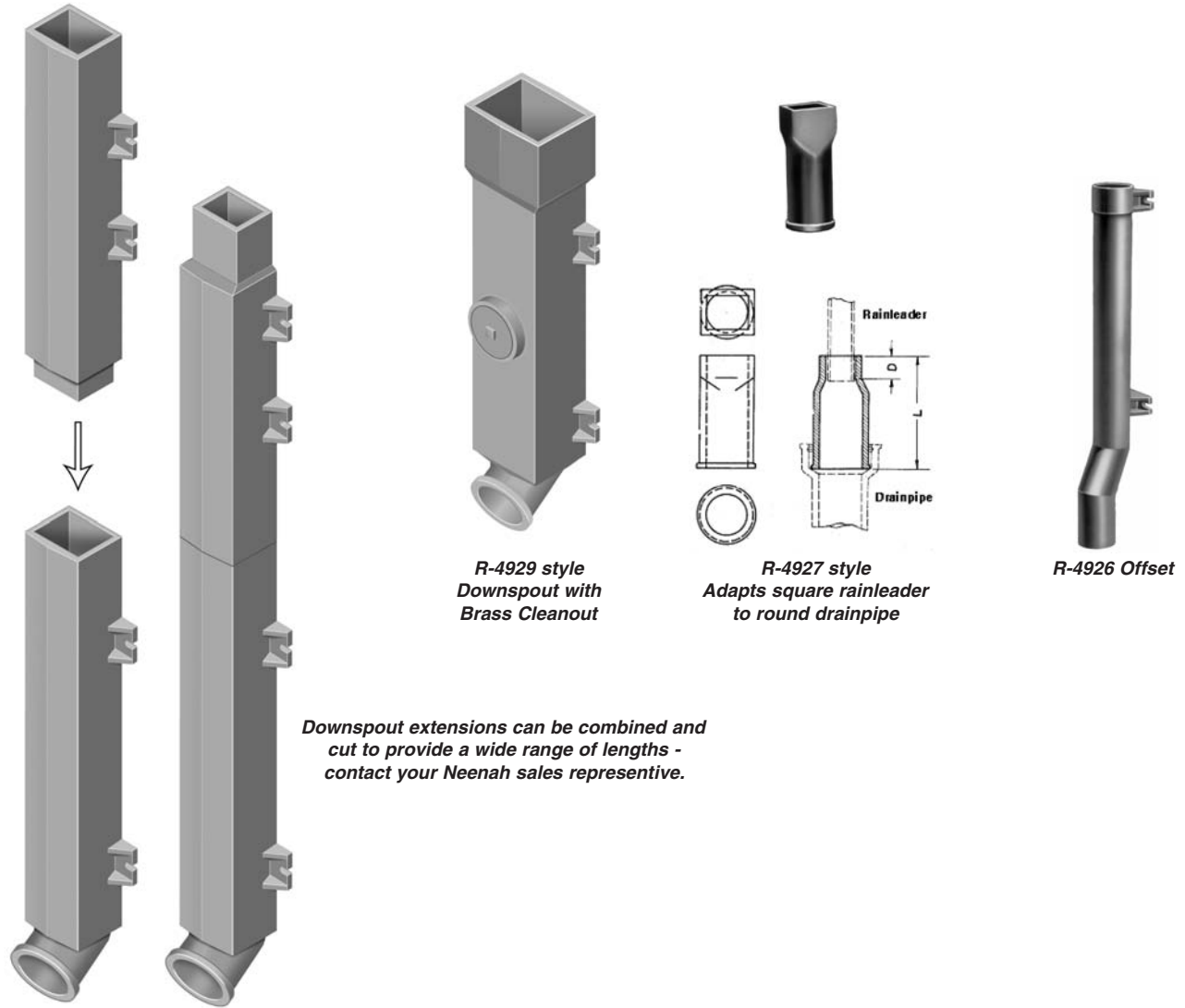
Traffic may cause damage to light sheet metal rainwater leaders. Cast iron downspout shoes at lower levels provide protection. Table shows various standard types in straight, offset and angular shoes. Fastening lug slots are 5/8". R-4927 downspout adapters are used between the sheet metal downspout and the surface drainage pipe. Cast iron adapters are made to fit cast iron soil pipe, however, they can be fitted to PVC pipe with the use of a no-hub coupling (furnished by others).

Can be furnished with a powdercoat finish or with one coat of black primer if requested.

Catalog No. Standard	Catalog No. w/ CleanOut	Inside Top Bell	L	Dimensions in inches		N	O	P	S	X	Shape
				Extension(s) Available *	D						
R-4926-A		4 7/8 dia.	39		3						Straight
R-4926-B		4 7/8 dia.	51		3						Straight
R-4926-C		4 7/8 dia.	63		3						Straight
R-4926-G1	R-4926-G1C	4 3/8 dia.	30		3	10 3/4	2 1/2	6			Offset
R-4927-A		3 x 4	11 1/2		2 1/2						Straight
R-4927-A1		2 x 3	11 1/2		1 3/4						Straight
R-4927-B	R-4927-BC	3 x 4 3/4	13 3/4		2						Straight
R-4927-C		4 x 4	13 1/2		2 1/4						Straight
R-4927-D		4 3/8 x 5 3/8	14 1/2		2 3/4						Straight
R-4927-F		4 x 5	14 3/8		2 3/8						Straight
R-4927-G		5 x 7	14 3/8		1 3/8						Straight
R-4929-A1	R-4929-A1C	3 x 4	30	yes	5 1/4				3 1/4	30	Angular
R-4929-A2	R-4929-A2C	3 x 4	40	yes	5 1/4				3 1/4	30	Angular
R-4929-A3		4 x 5	14 1/2		3				4 3/8	45	Angular
R-4929-A4	R-4929-A4C	4 x 5	30	yes	5 1/4				3 1/4	30	Angular
R-4929-A5	R-4929-A5C	4 x 5	40	yes	5 1/4				3 1/4	30	Angular
R-4929-A6	R-4929-A6C	4 x 6	30	yes	5 1/4				3 1/4	30	Angular
R-4929-A7		4 x 6	36 1/4		4 1/2				8 1/2	60	Angular
R-4929-A8	R-4929-A8C	4 x 6	40	yes	5 1/4				3 1/4	30	Angular
R-4929-A9	R-4929-A9C	5 x 7	30	yes	5 1/4				3 1/4	30	Angular
R-4929-A10	R-4929-A10C	5 x 7	40	yes	5 1/4				3 1/4	30	Angular
R-4929-A11	R-4929-A11C	3 x 4	32	yes	5 1/4				4 1/16	45	Angular
R-4929-A12	R-4929-A12C	3 x 4	42	yes	5 1/4				4 1/16	45	Angular
R-4929-A14	R-4929-A14C	4 x 5	32	yes	n/a				4 1/16	45	Angular
R-4929-A15	R-4929-A15C	4 x 5	42	yes	n/a				4 1/16	45	Angular
R-4929-A17	R-4929-A17C	4 x 6	32	yes	5 1/4				4 1/16	45	Angular
R-4929-A18	R-4929-A18C	4 x 6	42	yes	5 1/4				4 1/16	45	Angular
R-4929-A19	R-4929-A19C	5 x 7	32	yes	5 1/4				4 1/16	45	Angular
R-4929-A20	R-4929-A20C	5 x 7	42	yes	5 1/4				4 1/16	45	Angular
R-4929-A21		6 1/2 x 9	36		3				10	90	Angular
R-4929-O1	R-4929-O1C	3 x 4	20 1/2		2 1/2	4 7/8 dia.	12 1/4	2 1/2	8 1/4		Offset
R-4929-O2	R-4929-O2C	3 x 4	30	yes	5 1/4	4 7/8 dia.	2 7/8	2 1/2	1 7/16		Offset
R-4929-O3		3 x 4	32		3 1/8	4 dia.	13 1/2	2 3/8	11		Offset
R-4929-O4	R-4929-O4C	3 x 4	40	yes	5 1/4	4 7/8 dia.	2 7/8	2 1/2	1 7/16		Offset
R-4929-O5	R-4929-O5C	4 x 5	28		2 1/4	4 7/8 dia.	19 1/2	2 1/4	11 3/4		Offset
R-4929-O6	R-4929-O6C	4 x 5	30	yes	5 1/4	4 7/8 dia.	2 7/8	2 1/2	1 7/16		Offset
R-4929-O7		4 x 5	36		2	4 7/8 dia.	8 1/2	2 1/2	4 1/4		Offset
R-4929-O8	R-4929-O8C	4 x 5	40	yes	5 1/4	4 7/8 dia.	2 7/8	2 1/2	1 7/16		Offset
R-4929-O9	R-4929-O9C	4 x 6	30	yes	5 1/4	4 7/8 dia.	2 7/8	2 1/2	1 7/16		Offset
R-4929-O10		4 x 6	39 3/4		3 1/2	4 7/8 dia.	9 1/2	3 3/8	6		Offset
R-4929-O11	R-4929-O11C	4 x 6	40	yes	5 1/4	4 7/8 dia.	2 7/8	2 1/2	1 7/16		Offset
R-4929-O12		5 x 6	39 1/4		2 1/2	6 5/8 dia.	7 1/2	2 1/2	5		Offset
R-4929-O13	R-4929-O13C	5 x 7	30	yes	5 1/4	4 7/8 dia.	2 7/8	2 1/2	1 7/16		Offset
R-4929-O14	R-4929-O14C	5 x 7	40	yes	5 1/4	4 7/8 dia.	2 7/8	2 1/2	1 7/16		Offset
R-4929-O15		6 5/8 x 8 1/4	28		5	8 5/8 dia.	2 7/8	2 1/2	1 1/2		Offset
R-4929-O16		4 x 6	30		5 1/4	7 7/8 dia.	5 3/4	2 1/2	1 7/16		Offset
R-4929-S1	R-4929-S1C	3 x 4	30	yes	5 1/4	4 7/8 dia.					Straight
R-4929-S2	R-4929-S2C	3 x 4	40	yes	5 1/4	4 7/8 dia.					Straight
R-4929-S3	R-4929-S3C	4 x 5	30	yes	5 1/4	4 7/8 dia.					Straight
R-4929-S4	R-4929-S4C	4 x 5	40	yes	5 1/4	4 7/8 dia.					Straight
R-4929-S5	R-4929-S5C	4 x 6	30	yes	5 1/4	4 7/8 dia.					Straight
R-4929-S6	R-4929-S6C	4 x 6	40	yes	5 1/4	4 7/8 dia.					Straight
R-4929-S7	R-4929-S7C	5 x 7	30	yes	5 1/4	4 7/8 dia.					Straight
R-4929-S8	R-4929-S8C	5 x 7	40	yes	5 1/4	4 7/8 dia.					Straight

* 28" and 38" extension sections are available.

R-4926-29 Series
Downspout Shoes (Rainwater Leaders) continued...



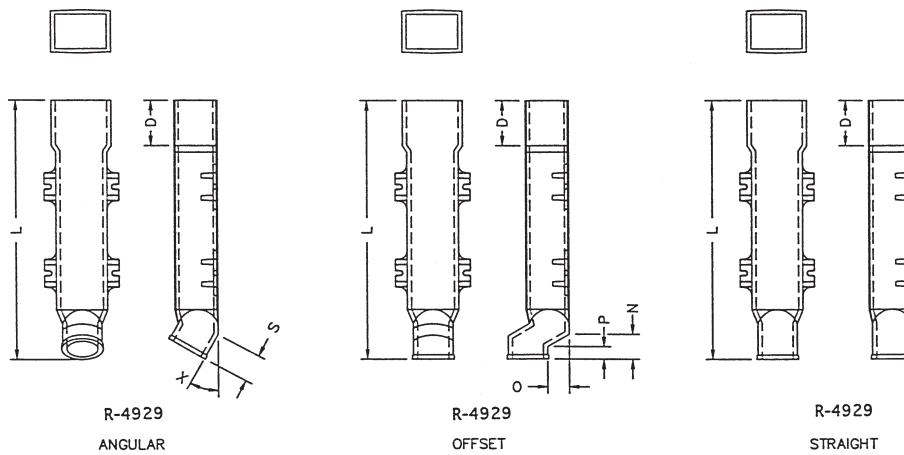
*R-4929 style
 Downspout with
 Brass Cleanout*

*R-4927 style
 Adapts square rainleader
 to round drainpipe*

R-4926 Offset

Downspout extensions can be combined and cut to provide a wide range of lengths - contact your Neenah sales representative.

Illustrating R-4929 style Angular Downspout with optional Extension.



*R-4929
 ANGULAR*

*R-4929
 OFFSET*

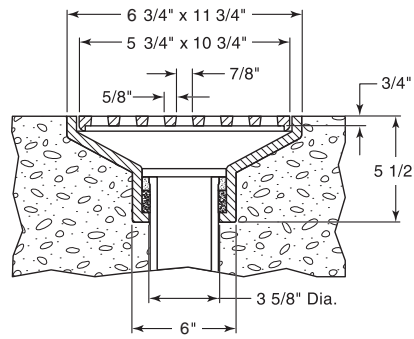
*R-4929
 STRAIGHT*

■ Note: When specifying/ordering grates, refer to "Choosing the proper inlet grate" on pages 117-118.
 For a complete listing of FREE OPEN AREAS and WEIR PERIMETERS of all NEENAH grates, refer to pages 306-311.

R-4937-A
Floor Drain, Grate

Light Duty

CATALOG NUMBER	GRATE TYPE	SQ. FT. OPEN	WEIR PERIMETER LINEAL FEET
R-4937-A	B	0.2	2.7

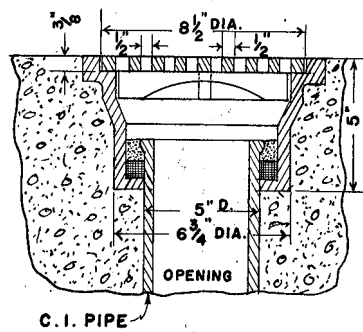


Outlet for 3" inside pipe caulk.

R-4937-B
Floor Drain, Grate

Light Duty

CATALOG NUMBER	GRATE TYPE	SQ. FT. OPEN	WEIR PERIMETER LINEAL FEET
R-4937-B	G	0.1	2.2

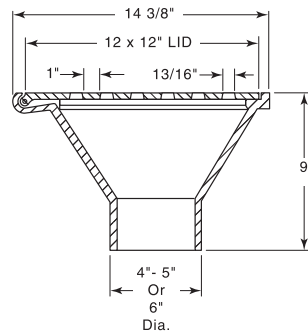


Outlet for 4" inside pipe caulk.

R-4937-C Series
Floor Drain Frame, Hinged Strainer

Light Duty

CATALOG NUMBER	GRATE TYPE	SQ. FT. OPEN	WEIR PERIMETER LINEAL FEET
R-4937-C1	H	0.2	4.0
R-4937-C2	H	0.2	4.0
R-4937-C3	H	0.2	4.0

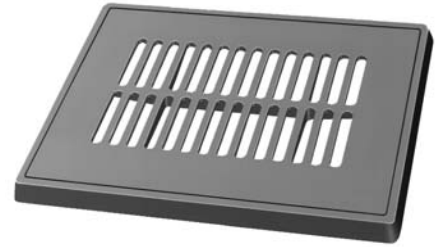
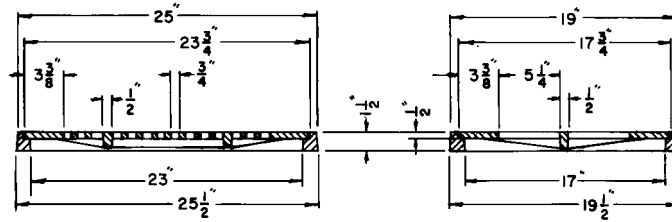


Catalog No.	Size
R-4937-C1	to fit 4" soil pipe
R-4937-C2	to fit 5" soil pipe
R-4937-C3	to fit 6" soil pipe

■ Note: When specifying/ordering grates, refer to “Choosing the proper inlet grate” on pages 117-118.
 For a complete listing of FREE OPEN AREAS and WEIR PERIMETERS of all NEENAH grates, refer to pages 306-311.

R-4938
Transit Frame, Grate

Light Duty

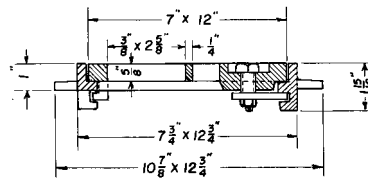


CATALOG NUMBER	GRATE TYPE	SQ. FT. OPEN	WEIR PERIMETER LINEAL FEET
R-4938	A	0.8	6.9

R-4938-B
Gutter Drain Frame, Grate

Light Duty

CATALOG NUMBER	GRATE TYPE	SQ. FT. OPEN	WEIR PERIMETER LINEAL FEET
R-4938-B	A	0.2	3.2



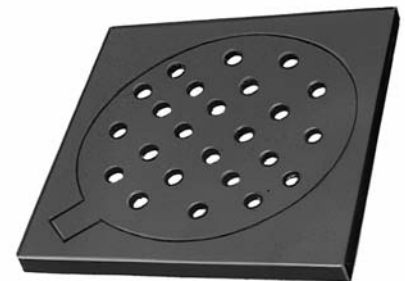
Note pavement anchors. Grate is secured in frame with countersunk pentagonal-head-bolt-operated locking device.

R-4939 Series
Hinged Drian Frame, Grate

Light Duty

Suitable for use in basements or garages.

Catalog No.	Size Outside	Dimensions in inches		
		Grate diameter	Clear Opening	Grate Thickness
R-4939-B	9 x 9	7	6 1/2	1/2
R-4939-C	13 x 13	10 1/2	10	1/2



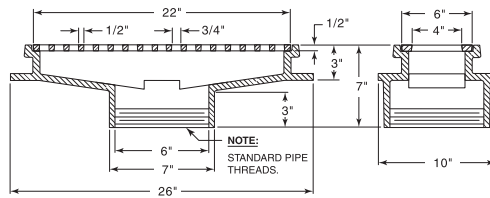
DRAINAGE GRATES 7

■ Note: When specifying/ordering grates, refer to "Choosing the proper inlet grate" on pages 117-118.
 For a complete listing of FREE OPEN AREAS and WEIR PERIMETERS of all NEENAH grates, refer to pages 306-311.

R-4941-A
Floor Drain Frame, Grate

Light Duty

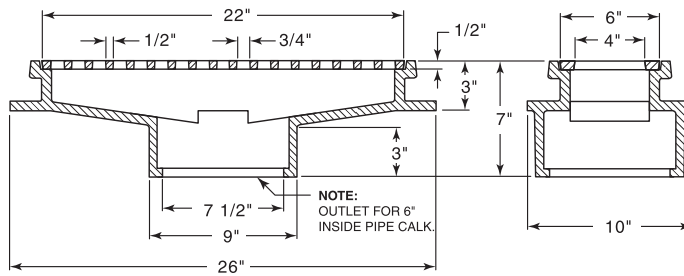
CATALOG NUMBER	GRATE TYPE	SQ. FT. OPEN	WEIR PERIMETER LINEAL FEET
R-4941-A	B	0.4	4.7



R-4941-B
Floor Drain Frame, Grate

Light Duty

CATALOG NUMBER	GRATE TYPE	SQ. FT. OPEN	WEIR PERIMETER LINEAL FEET
R-4941-B	B	0.4	4.7

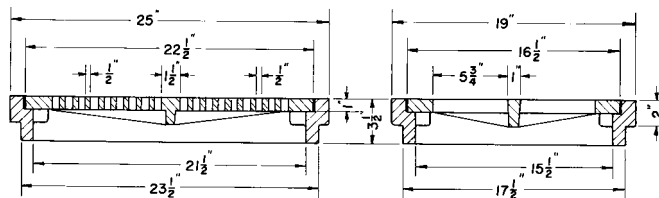


DRAINAGE GRATES

R-4942-A
Floor Drain Frame, Grate

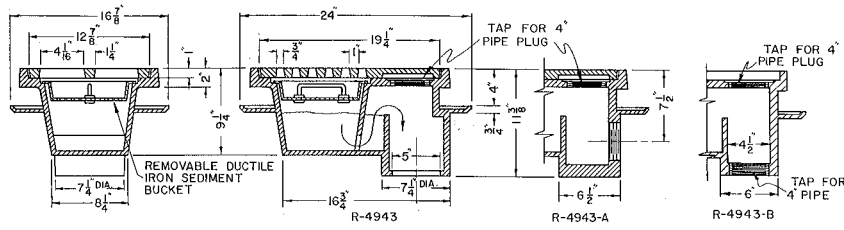
Light Duty

CATALOG NUMBER	GRATE TYPE	SQ. FT. OPEN	WEIR PERIMETER LINEAL FEET
R-4942-A	A	0.7	6.5



R-4943 Series Trap Drain with Sediment Bucket

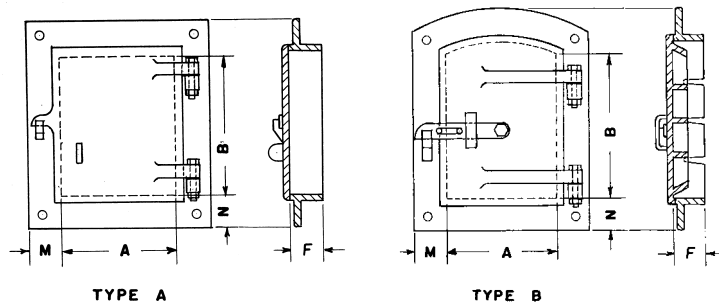
Heavy Duty



Ideal for use in manufacturing plants where organic debris is a problem. Frame is Class 35 gray iron, grate is ductile iron grade 55ksi for concentrated loading. Flashing clamps also available when specified for second floor installation.

CATALOG NUMBER	GRATE TYPE	SQ. FT. OPEN	WEIR PERIMETER LINEAL FEET	Catalog No.	Size
				R-4943	K
R-4943-A	K	0.3	5.4	R-4943-A	4" pipe, side outlet
R-4943-B	K	0.3	5.4	R-4943-B	4" pipe, bottom outlet

R-4950 to R-4951 Series Cleanout Frame, Door



Type A Series medium duty cleanouts are for use in chimneys or for ash pit doors on incinerators. Not recommended for installations subjected to intense heat.

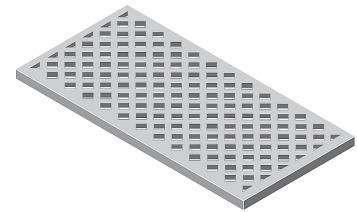
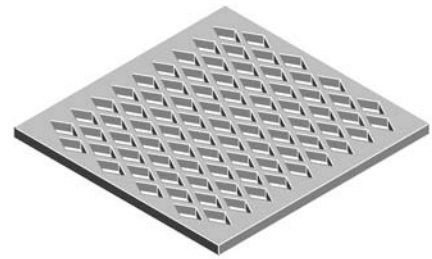
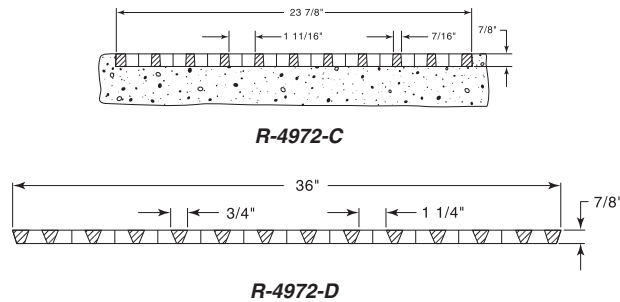
Available for smoke-proof or gas-tight applications - please specify.

Catalog No.	Dimensions in inches				
	A	B	F	M	N
R-4950 Type A - Medium Duty					
R-4950 8x8	8	8	2	2	2
R-4950 10x10	10	10	2	2	2
R-4950 12x12	12	12	2	2	2
R-4950 12x16	12	16	3	3	3
R-4950 16x12	16	12	4	2 1/2	2 1/2
R-4950 16x16	16	16	3	3	3
R-4950 16x18	16	18	4	3	3
R-4950 16x20	16	20	4	3	3
R-4950 20x16	20	16	4	3	3
R-4950 20x20	20	20	4	3	3
R-4950 20x24	20	24	4	3	3
R-4950 24x24	24	24	4	3	3
R-4950 24x30	24	30	4	3	3
R-4951 Type B - Heavy Duty					
R-4951 16x18	16	18	4	3 1/2	3 1/2

■ Note: When specifying/ordering grates, refer to "Choosing the proper inlet grate" on pages 117-118.
 For a complete listing of FREE OPEN AREAS and WEIR PERIMETERS of all NEENAH grates, refer to pages 306-311.

R-4972 Series Concrete Floor Protector

Heavy Duty

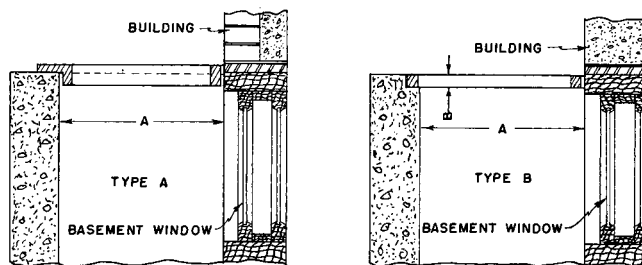


Cast iron grids provide a surface resistant to impact, abrasion and corrosion - afford better traction. Laid in areas subjected to heavy truck traffic, floor grids are invaluable in protecting the floor from excessive wear. Concrete is poured flush with the top of the casting so that the exposed iron protects the concrete. Grate is pushed into concrete as it is poured.

Dimensions in inches		
Catalog No.	Size	Thickness
R-4972-C	24 x 24	7/8
R-4972-D	18 x 36	7/8

R-4976 to R-4977 Series Areaway Grate

Light Duty



Type A with lip to set on top of areaway wall.
 Type B to set in recess of areaway wall.



Illustrating R-4976



Illustrating R-4977

For use over window wells providing maximum light transmission. Also suitable for use as ventilating and shaft gratings.

Dimensions in inches					
Catalog No. Type A	Catalog No. Type B	A	B	Openings	Bars
<i>Half Round</i>					
R-4976-1A	R-4976-1B	12 x 24	1	1 1/4	1/4
R-4976-2A	R-4976-2B	15 x 30	1	1 1/4	1/2
R-4976-3A	R-4976-3B	20 x 40	1 1/4	1 1/4	5/16
R-4976-4A	R-4976-4B	24 x 48	1 1/4	1 1/4	5/16
<i>Rectangular</i>					
R-4977-1A	R-4977-1B	12 x 24	1	1 1/4	1/4
R-4977-2A	R-4977-2B	15 x 30	1	1 1/4	1/4
R-4977-3A	R-4977-3B	20 x 40	1 1/4	1 1/4	5/15
R-4977-4A	R-4977-4B	24 x 48	1 1/4	1 1/4	5/16
R-4977-5A	R-4977-5B	30 x 60	1 1/4	1 1/4	5/16

Note: on Type A, grate size exceeds dimension "A" by 1-1/2" on all except wall side.
 Note: on Type B, grate is 1" wider and 2" longer than dimension "A"

CATALOG NUMBER	GRATE TYPE	SQ. FT. OPEN	WEIR PERIMETER LINEAL FEET
R-4976-1	A or B	0.9	3.1
R-4976-2	A or B	1.5	4.2
R-4976-3	A or B	2.5	5.2
R-4976-4	A or B	3.7	6.3
R-4976-5	B	5.2	8.1
R-4977-1	A or B	1.5	4.0
R-4977-2	A or B	2.0	5.0
R-4977-3	A or B	3.7	10.0
R-4977-4	A or B	5.3	12.0
R-4977-5	A or B	8.0	15.0