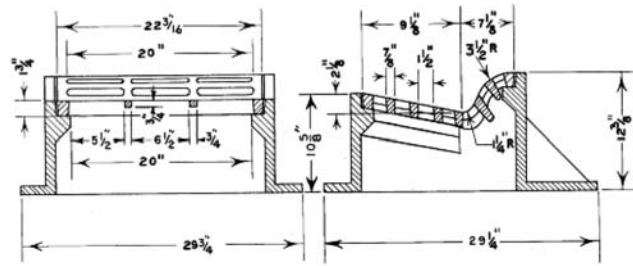


■ Note: When specifying/ordering grates, refer to "Choosing the proper inlet grate" on pages 117-118.
 For a complete listing of FREE OPEN AREAS and WEIR PERIMETERS of all NEENAH grates, refer to pages 306-311.

R-3501-D2A See pages 145-146-148 & 155 for additional Roll Type products
Inlet for Roll Type Curb

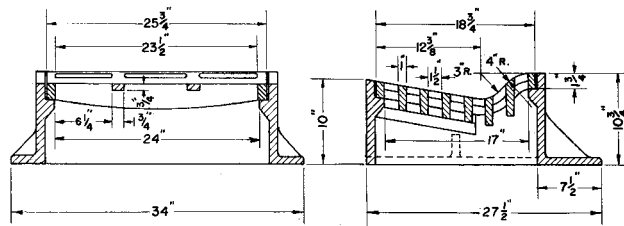
Heavy Duty



CATALOG NUMBER	GRATE TYPE	SQ. FT. OPEN	WEIR PERIMETER LINEAL FEET
R-3501-D2A	C	1.0	3.4

R-3501-E2
Inlet for Roll Type Curb

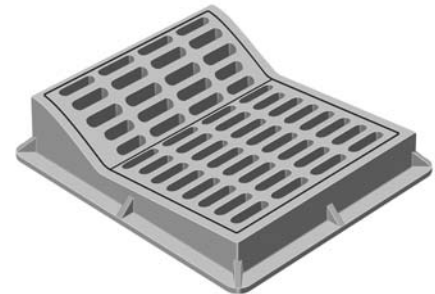
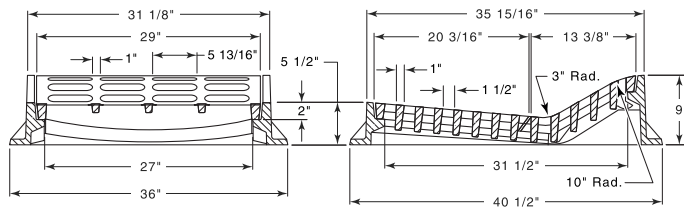
Heavy Duty



CATALOG NUMBER	GRATE TYPE	SQ. FT. OPEN	WEIR PERIMETER LINEAL FEET
R-3501-E2	C	1.4	4.2

R-3501-H4
Inlet for Roll Type Curb

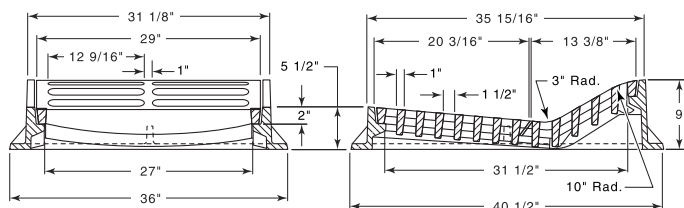
Heavy Duty



CATALOG NUMBER	GRATE TYPE	SQ. FT. OPEN	WEIR PERIMETER LINEAL FEET
R-3501-H4	C	2.8	6.8

R-3501-HL
Mountable Curb Frame, Grate

Heavy Duty



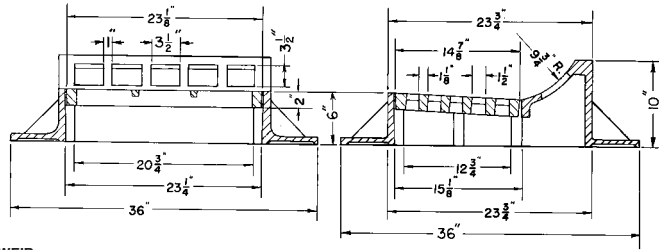
CATALOG NUMBER	GRATE TYPE	SQ. FT. OPEN	WEIR PERIMETER LINEAL FEET
R-3501-HL	D	3.3	5.8

ROLL & GUTTER INLETS
5

■ Note: When specifying/ordering grates, refer to "Choosing the proper inlet grate" on pages 117-118.
 For a complete listing of FREE OPEN AREAS and WEIR PERIMETERS of all NEENAH grates, refer to pages 306-311.

R-3501-L1A
Inlet for Roll Type Curb

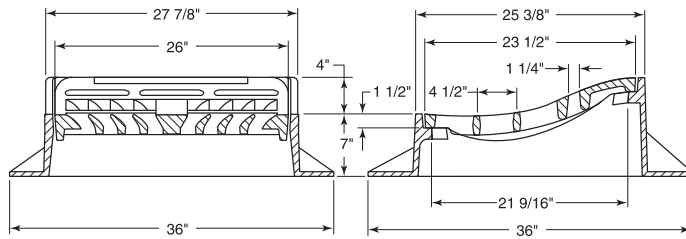
Heavy Duty



CATALOG NUMBER	GRATE TYPE	SQ. FT. OPEN	WEIR PERIMETER LINEAL FEET
R-3501-L1A	C	1.2	4.4

R-3501-L2
Inlet for Roll Type Curb

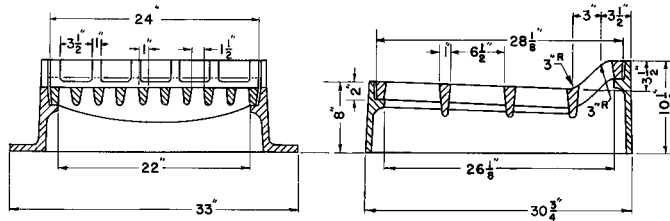
Heavy Duty



CATALOG NUMBER	GRATE TYPE	SQ. FT. OPEN	WEIR PERIMETER LINEAL FEET
R-3501-L2	V	1.3	3.7

R-3501-M
Inlet for Roll Type Curb

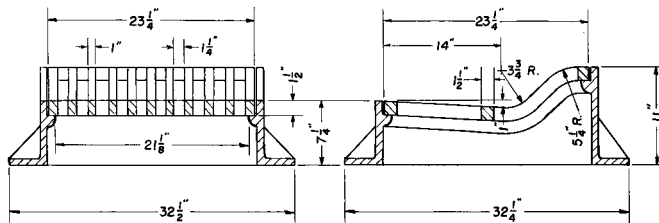
Heavy Duty



CATALOG NUMBER	GRATE TYPE	SQ. FT. OPEN	WEIR PERIMETER LINEAL FEET
R-3501-M	A	2.3	5.6

R-3501-N
Inlet for Roll Type Curb

Heavy Duty

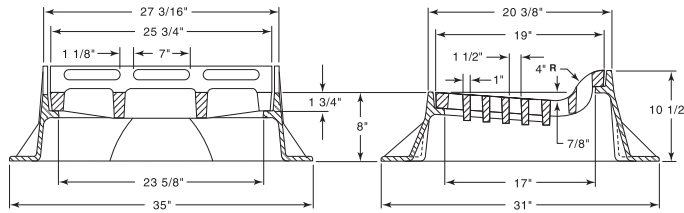


CATALOG NUMBER	GRATE TYPE	SQ. FT. OPEN	WEIR PERIMETER LINEAL FEET
R-3501-N	A	1.6	4.3

■ Note: When specifying/ordering grates, refer to "Choosing the proper inlet grate" on pages 117-118.
 For a complete listing of FREE OPEN AREAS and WEIR PERIMETERS of all NEENAH grates, refer to pages 306-311.

R-3501-P Inlet for Roll Type Curb

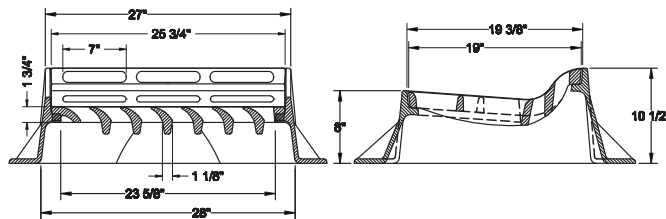
Heavy Duty



CATALOG NUMBER	GRATE TYPE	SQ. FT. OPEN	WEIR PERIMETER LINEAL FEET
R-3501-P	C	1.5	4.3

R-3501-PR Inlet for Roll Type Curb

Heavy Duty

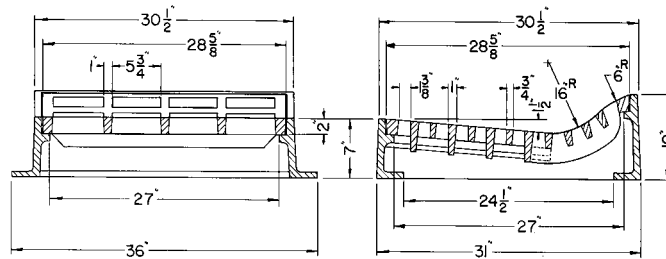


CATALOG NUMBER	GRATE TYPE	SQ. FT. OPEN	WEIR PERIMETER LINEAL FEET
R-3501-PR	L	1.6	4.7
R-3501-PL	L	1.6	4.7

Illustrating R-3501-PR (flow right).
 If flow left required, order R-3501-PL.

R-3501-R Inlet for Roll Type Curb

Heavy Duty

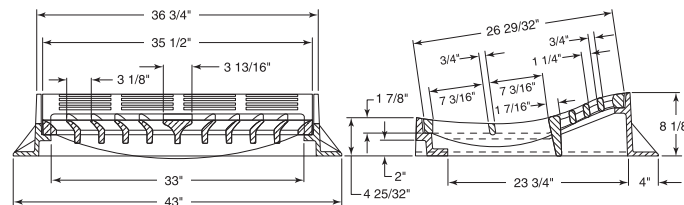


CATALOG NUMBER	GRATE TYPE	SQ. FT. OPEN	WEIR PERIMETER LINEAL FEET
R-3501-R	C	2.6	5.5

Available with 4-flange frame, order R-3501-RA.

R-3501-TB Inlet for Roll Type Curb

Heavy Duty



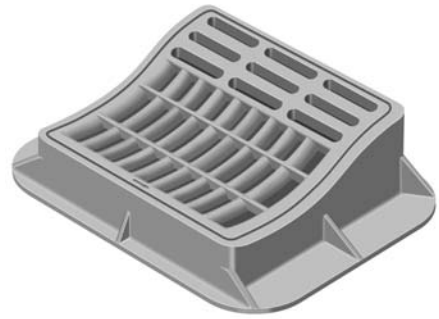
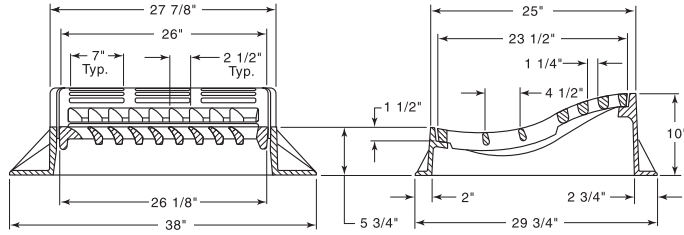
CATALOG NUMBER	GRATE TYPE	SQ. FT. OPEN	WEIR PERIMETER LINEAL FEET
R-3501-TB	L	3.1	5.7

ROLL &
 GUTTER
 INLETS
 5

■ Note: When specifying/ordering grates, refer to "Choosing the proper inlet grate" on pages 117-118.
 For a complete listing of FREE OPEN AREAS and WEIR PERIMETERS of all NEENAH grates, refer to pages 306-311.

R-3501-TR Inlet for Roll Type Curb

Heavy Duty

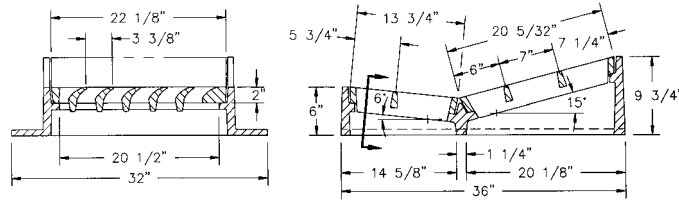


CATALOG NUMBER	GRATE TYPE	SQ. FT. OPEN	WEIR PERIMETER LINEAL FEET
R-3501-TR	L	1.4	4.6
R-3501-TL	L	1.4	4.6

Illustrating R-3501-TR (flow right). If flow left required, order R-3501-TL.

R-3501-U Series Inlet for Roll Type Curb

Heavy Duty

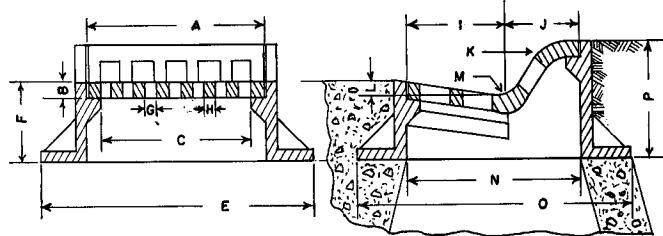


CATALOG NUMBER	GRATE TYPE	SQ. FT. OPEN	WEIR PERIMETER LINEAL FEET
R-3501-U	L	2.4	5.0
R-3501-U1	L	2.4	5.0

Catalog No.	F
R-3501-U	9 3/4"
R-3501-U1	6"

R-3502 Series Inlet for Roll Type Curb

Heavy Duty



Dimensions in inches

Catalog No.	A	B	C	E	F	G	H	I	J	K	L	M	N	O	P
R-3502-A *	22	1 3/4	20 1/4	36	10	1 7/8	1	13 7/8	8 7/8	4	1 3/4	3	23	36	15 5/8
R-3502-B	21 1/2	1 3/4	20 1/4	36	10	1 7/8	1	14	8	4	2 3/4	3	22	36	13 5/8

* Frame furnished in two pieces as shown on R-3502-D2.

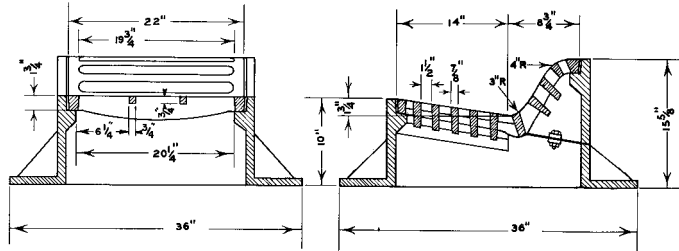
CATALOG NUMBER	GRATE TYPE	SQ. FT. OPEN	WEIR PERIMETER LINEAL FEET
R-3502-A	A	1.4	4.1
R-3502-B	A	1.4	4.2

ROLL & GUTTER INLETS
5

■ Note: When specifying/ordering grates, refer to "Choosing the proper inlet grate" on pages 117-118.
 For a complete listing of FREE OPEN AREAS and WEIR PERIMETERS of all NEENAH grates, refer to pages 306-311.

R-3502-D2
Inlet for Roll Type Curb

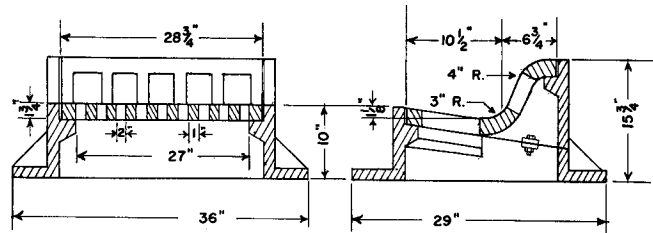
Heavy Duty



CATALOG NUMBER	GRATE TYPE	SQ. FT. OPEN	WEIR PERIMETER LINEAL FEET
R-3502-D2	C	1.9	4.2

R-3503-A
Inlet for Roll Type Curb

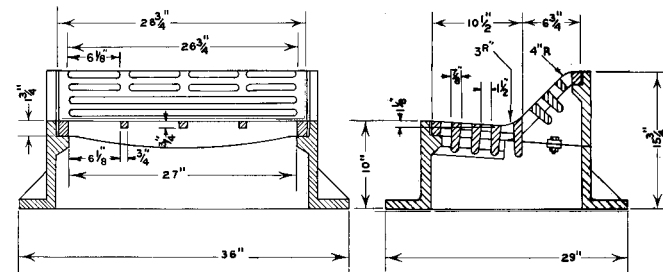
Heavy Duty



CATALOG NUMBER	GRATE TYPE	SQ. FT. OPEN	WEIR PERIMETER LINEAL FEET
R-3503-A	B	1.3	4.1

R-3503-B
Inlet for Roll Type Curb

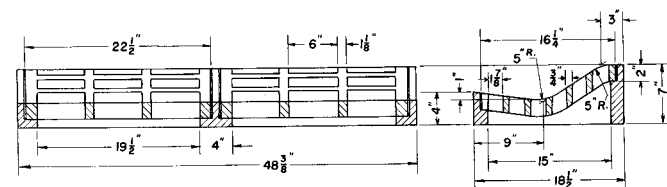
Heavy Duty



CATALOG NUMBER	GRATE TYPE	SQ. FT. OPEN	WEIR PERIMETER LINEAL FEET
R-3503-B	C	2.0	4.1

R-3504-F
Inlet Frame and Double Grate for Driveway and Mountable Curb

Heavy Duty



CATALOG NUMBER	GRATE TYPE	SQ. FT. OPEN	WEIR PERIMETER LINEAL FEET
R-3504-F	C	2.8	5.1

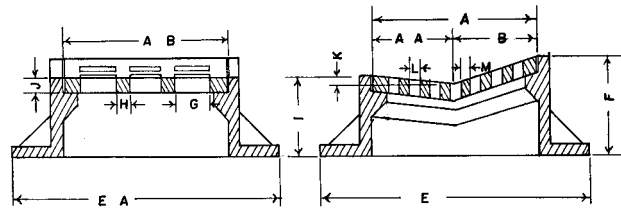
ROLL & GUTTER INLETS
 5

■ Note: When specifying/ordering grates, refer to "Choosing the proper inlet grate" on pages 117-118.
 For a complete listing of FREE OPEN AREAS and WEIR PERIMETERS of all NEENAH grates, refer to pages 306-311.

R-3506 to R-3517 Series Inlet Frame and Grate for Driveway and Mountable Curb

Heavy Duty

CATALOG NUMBER	GRATE TYPE	SQ. FT. OPEN	WEIR PERIMETER LINEAL FEET
R-3506-A2	C	1.4	2.9
R-3506-B	C	1.2	2.9
R-3507-C	D	1.6	3.7
R-3507-D	D	1.6	3.7
R-3508-A2	C	1.7	3.8
R-3508-B	C	1.8	3.8
R-3508-B1	D	1.9	3.8
R-3508-B2	K	1.4	7.5
R-3508-C	C	1.4	3.8
R-3509	K	0.9	2.8
R-3510	C	2.9	4.1
R-3511	C	2.0	2.9
R-3513	A	1.4	4.7
R-3514-F	C	2.6	5.5
R-3514-F2	C	5.1	7.7
R-3517	C	1.8	3.7



Illustrating R-3508-A2

Dimensions in inches

Catalog No.	A	AB	AA	B	E	EA	F	G	H	I	J	K	L	M
R-3506-A2 *	19 1/4	19 1/4	8 1/8	11 1/8	28 1/4	30	12 1/2	6 1/4	3/4	10	1 1/2	1 1/4	1 1/2	7/8
R-3506-B *	19 1/4	19 1/4	8 1/8	11 1/8	28 1/4	30	11	4 3/4	1	10	1 1/2	1 1/2	1 7/8	1
R-3507-C	22	22	11	11	35	35	10	19 3/4	-	10	1 3/4	2	1 1/2	7/8
R-3507-D **	22	22	11	11	30	35	10	19 3/4	-	10	1 3/4	2	1 1/2	7/8
R-3508-A2	22 3/4	22 3/4	11 3/8	11 3/8	35	Dia.	12	6 1/4	3/4	10	1 3/4	2	1 1/2	7/8
R-3508-B	22 3/4	22 3/4	11 3/8	11 3/8	35	Dia.	10	6	1	10	1 3/4	1 3/4	2	1
R-3508-B1	22 3/4	22 3/4	11 3/8	11 3/8	35	Dia.	10	20 3/4	-	10	1 3/4	1 3/4	1 1/2	7/8
R-3508-B2 *	22 1/2	22 1/2	11 1/4	11 1/4	35	Dia.	10	6	1	10	1 3/4	1 3/4	1	7/8
R-3508-C *	22 3/4	22 3/4	11 3/8	11 3/8	38	Dia.	13 1/2	4 1/4	1 3/16	10	2 3/8	1/2	1 3/8	1
R-3509	17	22	8 1/2	8 1/2	25	29	5 1/4	1 1/4	1 1/4	5 1/4	1 3/4	1	6 3/4	1 1/4
R-3510	21 3/4	35 3/4	13 7/8	7 7/8	30	44	9 1/2	10 3/8	1 1/8	6	2	1	1 7/8	1 1/8
R-3511	19	30	8 1/8	10 7/8	27	38	8	8 1/2	1 1/8	7	2	1 3/8	1 7/8	1 1/8
R-3513	24	24	16 1/4	7 3/4	36	35 5/8	7	1 1/4	1	7	1 7/8	2 1/2	4	2 1/4
R-3514-F ***	29 3/8	28 1/8	19 1/8	10 1/4	38 1/4	36 1/4	11 1/2	7 1/2	1	8	2	1 1/2	1 1/2	1
R-3514-F2 +	29 3/8	28 1/8	19 1/8	10 1/4	38 1/4	69 1/2	11 1/2	7 1/2	1	8	2	1 1/2	1 1/2	1
R-3517	22 1/4	22 1/4	11 1/8	11 1/8	36	Dia.	6	6	1	6	2	1/2	2	1

* No base flange at rear.

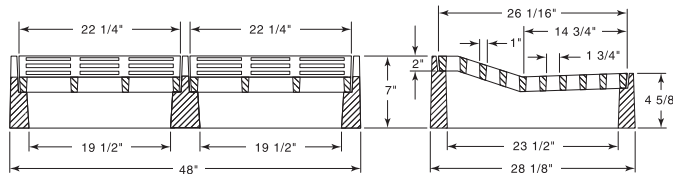
** No base flange on front.

*** Also available with 44" diameter base flange.

+ Two piece frame, two piece grate.

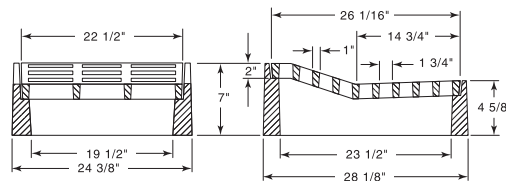
R-3516 Series Inlet Frame and Grate for Driveway and Mountable Curb

Heavy Duty

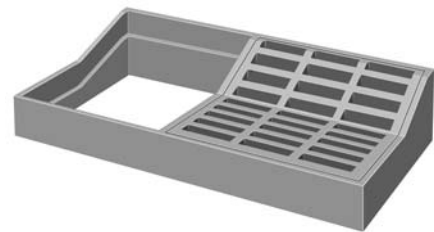


R-3516 Double Unit

CATALOG NUMBER	GRATE TYPE	SQ. FT. OPEN	WEIR PERIMETER LINEAL FEET
R-3516	C	4.0	6.2
R-3516-1	C	2.0	4.3



R-3516-1 Single Unit



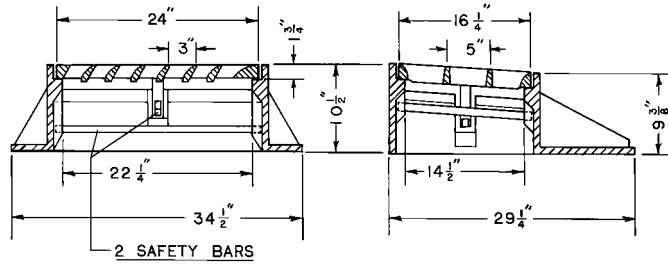
Illustrating R-3516 w/ one grate removed

Catalog No.	Type
R-3516	Double Unit
R-3516-1	Single Unit

■ Note: When specifying/ordering grates, refer to "Choosing the proper inlet grate" on pages 117-118.
 For a complete listing of FREE OPEN AREAS and WEIR PERIMETERS of all NEENAH grates, refer to pages 306-311.

R-3525-L
Expressway Inlet for Barrier or Mountable Curb

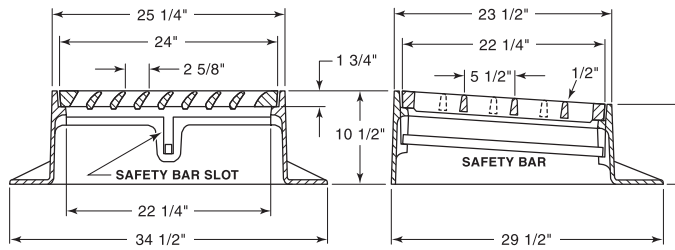
Heavy Duty



CATALOG NUMBER	GRATE TYPE	SQ. FT. OPEN	WEIR PERIMETER LINEAL FEET
R-3525-L	L	1.1	4.7

R-3526-L
Expressway Inlet for Barrier or Mountable Curb

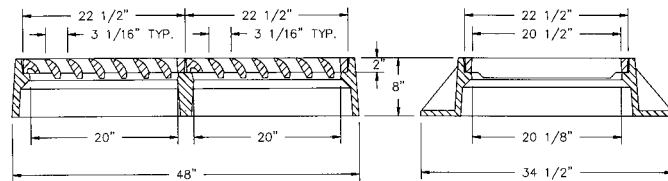
Heavy Duty



CATALOG NUMBER	GRATE TYPE	SQ. FT. OPEN	WEIR PERIMETER LINEAL FEET
R-3526-L	L	1.9	5.7

R-3527-M
Expressway Frame, Grate

Heavy Duty



CATALOG NUMBER	GRATE TYPE	SQ. FT. OPEN	WEIR PERIMETER LINEAL FEET
R-3527-M	V	3.4	11.3

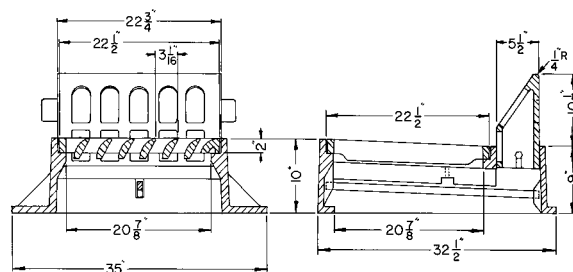
R-3527-V
Median Barrier Inlet Frame, Grate, Curb Box

Heavy Duty

CATALOG NUMBER	GRATE TYPE	SQ. FT. OPEN	WEIR PERIMETER LINEAL FEET
R-3527-V	V	1.7	5.6

Available with bolting options.

Fits Jersey Type barrier wall.



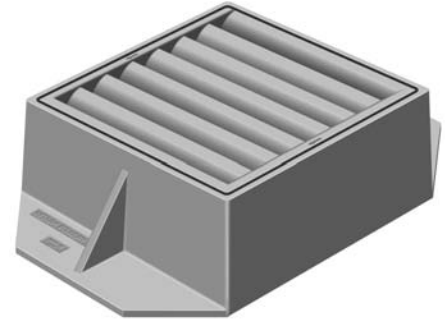
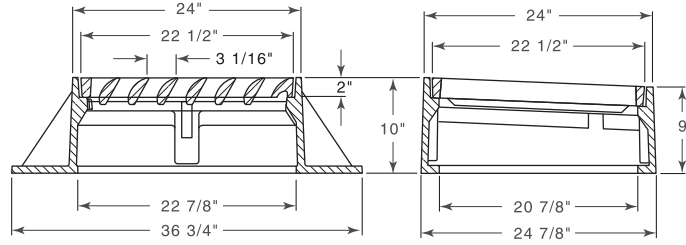
ROLL & GUTTER INLETS
5

■ Note: When specifying/ordering grates, refer to "Choosing the proper inlet grate" on pages 117-118.
 For a complete listing of FREE OPEN AREAS and WEIR PERIMETERS of all NEENAH grates, refer to pages 306-311.

R-3528-V Median Barrier Inlet Frame, Grate, Curb Box

Heavy Duty

Available with bolting options.

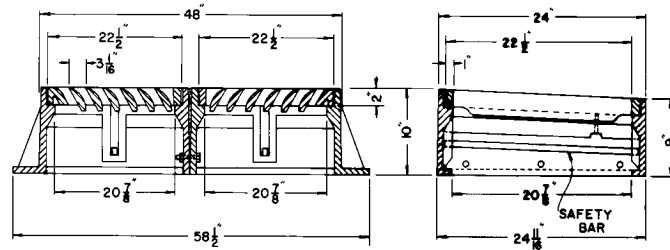


CATALOG NUMBER	GRATE TYPE	SQ. FT. OPEN	WEIR PERIMETER LINEAL FEET
R-3528-V	V	1.7	7.5

R-3529-V Double Median Barrier Frame, Grate

Heavy Duty

Available with bolting options.

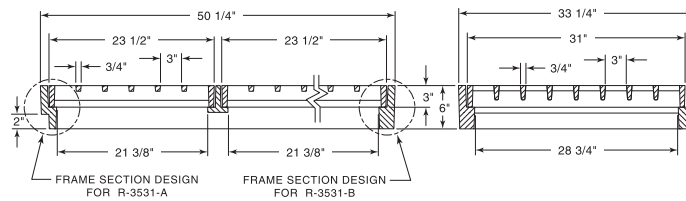


CATALOG NUMBER	GRATE TYPE	SQ. FT. OPEN	WEIR PERIMETER LINEAL FEET
R-3529-V	V	3.4	11.3

Typically used at sag locations of concrete barrier wall or non-pedestrian areas of combination concrete curb and gutter.

R-3531-A & R-3531-B Turnpike Inlet Frame, Double Grate

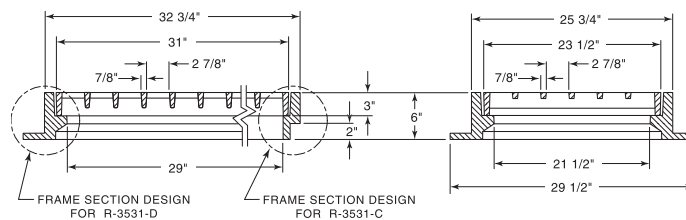
Heavy Duty



CATALOG NUMBER	GRATE TYPE	SQ. FT. OPEN	WEIR PERIMETER LINEAL FEET
R-3531-A	H	6.0	13.0
R-3531-B	H	6.0	13.0

R-3531-C & R-3531-D Turnpike Inlet Frame, Single Grate

Heavy Duty



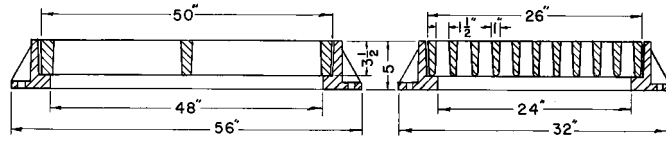
CATALOG NUMBER	GRATE TYPE	SQ. FT. OPEN	WEIR PERIMETER LINEAL FEET
R-3531-C	H	3.0	9.1
R-3531-D	H	3.0	9.1

ROLL & GUTTER INLETS
5

■ Note: When specifying/ordering grates, refer to "Choosing the proper inlet grate" on pages 117-118.
 For a complete listing of FREE OPEN AREAS and WEIR PERIMETERS of all NEENAH grates, refer to pages 306-311.

R-3531-E
Turnpike Inlet Frame, Single Grate

Heavy Duty

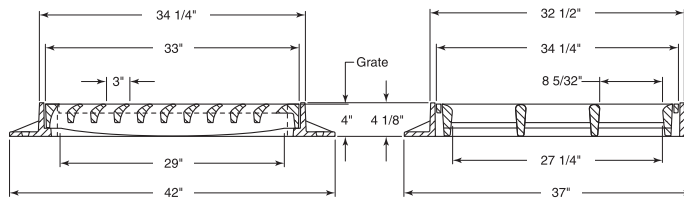


CATALOG NUMBER	GRATE TYPE	SQ. FT. OPEN	WEIR PERIMETER LINEAL FEET
R-3531-E	C	4.7	12.7

Grate furnished in ductile iron.

R-3540
3-Flange Gutter Inlet Frame, Grate

Heavy Duty

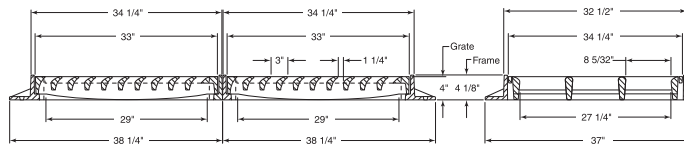


CATALOG NUMBER	GRATE TYPE	SQ. FT. OPEN	WEIR PERIMETER LINEAL FEET
R-3540	L	3.2	10.6

Frame available with full 4-sided frame flange on request.

R-3540-2
3-Flange Double Gutter Inlet Frame, Grate

Heavy Duty

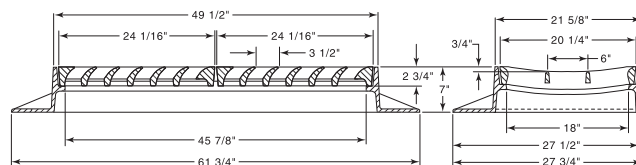


CATALOG NUMBER	GRATE TYPE	SQ. FT. OPEN	WEIR PERIMETER LINEAL FEET
R-3540-2	L	6.4	16.3

Frame available with full 4-sided frame flange on request.

R-3541
3-Flange Double Gutter Inlet Frame

Heavy Duty



CATALOG NUMBER	GRATE TYPE	SQ. FT. OPEN	WEIR PERIMETER LINEAL FEET
R-3541	L	1.6	7.3

Frame available with full 4-sided frame flange, order as R-3541-A.

Illustrating R-3541

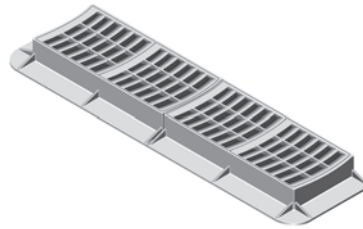
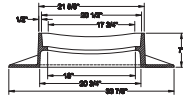
ROLL & GUTTER INLETS
 5

■ Note: When specifying/ordering grates, refer to "Choosing the proper inlet grate" on pages 117-118.
 For a complete listing of FREE OPEN AREAS and WEIR PERIMETERS of all NEENAH grates, refer to pages 306-311.

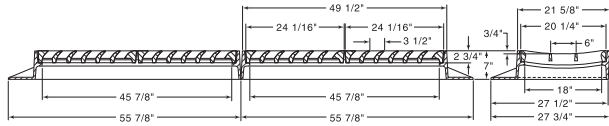
R-3541-2 3-Flange Double Gutter Inlet Frame, Multiple Grates

Heavy Duty

CATALOG NUMBER	GRATE TYPE	SQ. FT. OPEN	WEIR PERIMETER LINEAL FEET
R-3541-2	L	3.2	11.3



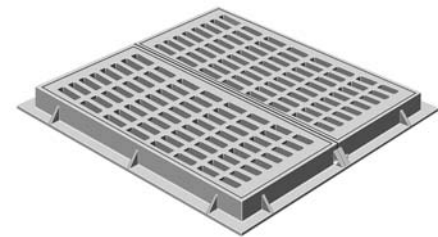
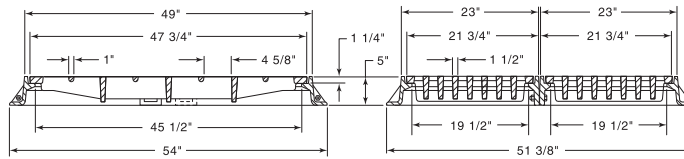
Also available in 4 flange.



R-3550-2 Double Gutter Inlet Frame, Grate

Heavy Duty

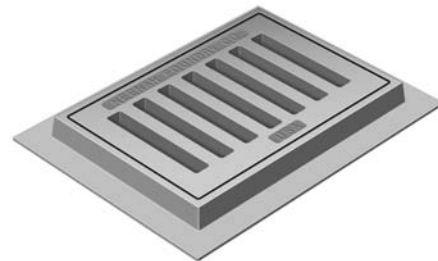
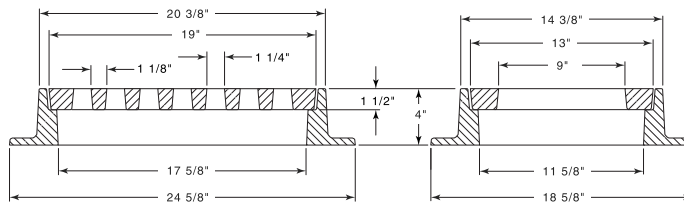
CATALOG NUMBER	GRATE TYPE	SQ. FT. OPEN	WEIR PERIMETER LINEAL FEET
R-3550-2	C	5.8	15.2



R-3555 Gutter Inlet Frame, Grate

Heavy Duty

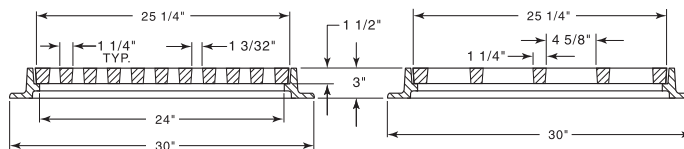
CATALOG NUMBER	GRATE TYPE	SQ. FT. OPEN	WEIR PERIMETER LINEAL FEET
R-3555	B	0.5	5.3



R-3560 Gutter Inlet Frame, Grate

Heavy Duty

CATALOG NUMBER	GRATE TYPE	SQ. FT. OPEN	WEIR PERIMETER LINEAL FEET
R-3560	A or C	1.5	8.4



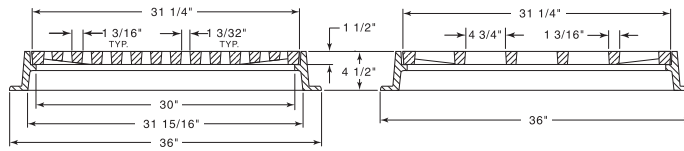
ROLL & GUTTER INLETS

5

■ Note: When specifying/ordering grates, refer to "Choosing the proper inlet grate" on pages 117-118.
 For a complete listing of FREE OPEN AREAS and WEIR PERIMETERS of all NEENAH grates, refer to pages 306-311.

R-3561 Gutter Inlet Frame, Grate

Heavy Duty

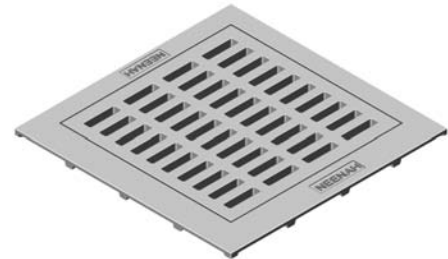
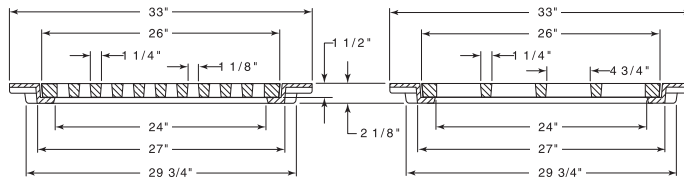


CATALOG NUMBER	GRATE TYPE	SQ. FT. OPEN	WEIR PERIMETER LINEAL FEET
R-3561	A or C	2.3	10.4

Solid Type C lid available.

R-3562 Gutter Inlet Frame, Grate

Heavy Duty

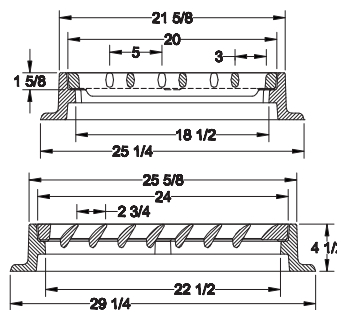


CATALOG NUMBER	GRATE TYPE	SQ. FT. OPEN	WEIR PERIMETER LINEAL FEET
R-3562	C	1.5	8.7

Top surface of frame and grate have Perma-grip texture.

R-3563-L Gutter Inlet Frames, Grate

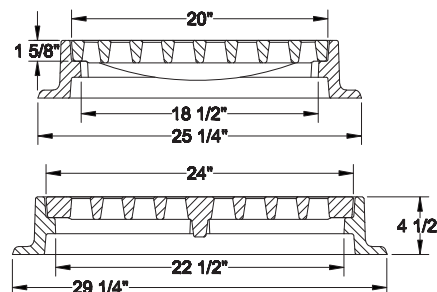
Heavy Duty



CATALOG NUMBER	GRATE TYPE	SQ. FT. OPEN	WEIR PERIMETER LINEAL FEET
R-3563-L	L	1.4	7.3

R-3563-HB Gutter Inlet Frames, Grate

Heavy Duty



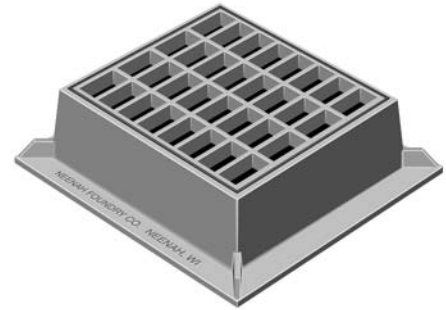
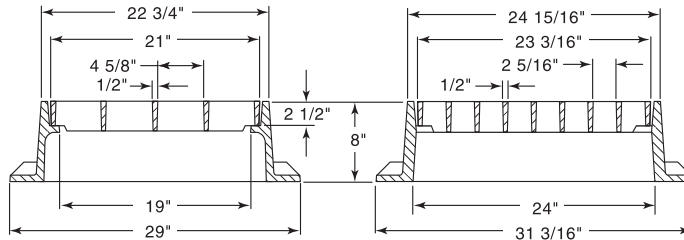
CATALOG NUMBER	GRATE TYPE	SQ. FT. OPEN	WEIR PERIMETER LINEAL FEET
R-3563-HB	K	1.3	7.3

ROLL &
GUTTER
INLETS
5

■ Note: When specifying/ordering grates, refer to "Choosing the proper inlet grate" on pages 117-118.
 For a complete listing of FREE OPEN AREAS and WEIR PERIMETERS of all NEENAH grates, refer to pages 306-311.

R-3570
4-Flange Gutter Inlet Frame, Grate

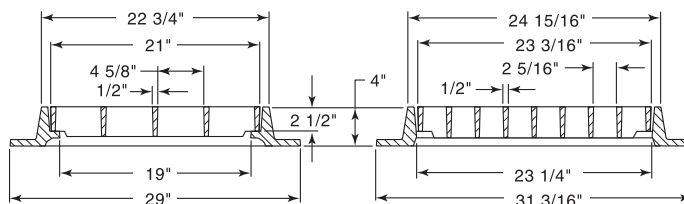
Heavy Duty



CATALOG NUMBER	GRATE TYPE	SQ. FT. OPEN	WEIR PERIMETER LINEAL FEET
R-3570	A	2.4	7.4

R-3570-A
4-Flange Gutter Inlet Frame, Grate

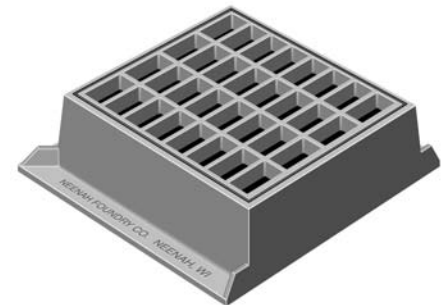
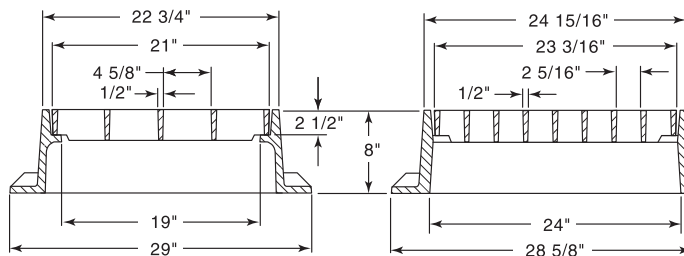
Heavy Duty



CATALOG NUMBER	GRATE TYPE	SQ. FT. OPEN	WEIR PERIMETER LINEAL FEET
R-3570-A	A	2.4	7.4

R-3571
3-Flange Gutter Inlet Frame, Grate

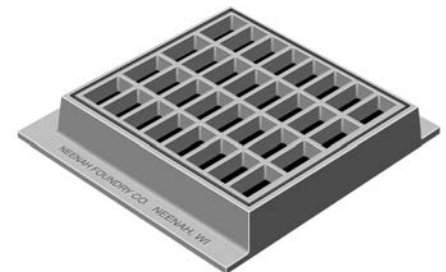
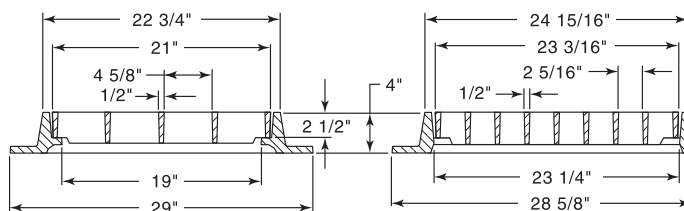
Heavy Duty



CATALOG NUMBER	GRATE TYPE	SQ. FT. OPEN	WEIR PERIMETER LINEAL FEET
R-3571	A	2.4	7.4

R-3571-A
3-Flange Gutter Inlet Frame, Grate

Heavy Duty



CATALOG NUMBER	GRATE TYPE	SQ. FT. OPEN	WEIR PERIMETER LINEAL FEET
R-3571-A	A	2.4	7.4

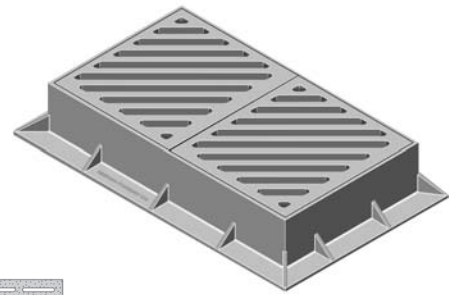
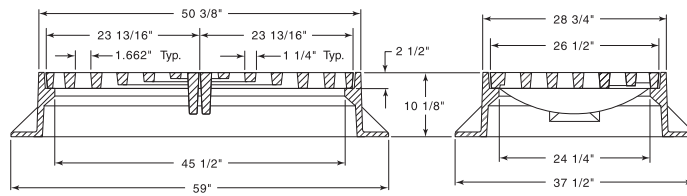
ROLL & GUTTER INLETS

5

■ Note: When specifying/ordering grates, refer to "Choosing the proper inlet grate" on pages 117-118.
 For a complete listing of FREE OPEN AREAS and WEIR PERIMETERS of all NEENAH grates, refer to pages 306-311.

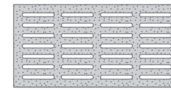
R-3572 Series 4-Flange Gutter Inlet Frame, Double Gate

Heavy Duty



CATALOG NUMBER	GRATE TYPE	SQ. FT. OPEN	WEIR PERIMETER LINEAL FEET
R-3572-2D	R	3.8	12.3
R-3572-2L	L	4.6	12.3
R-3572-2Q	Q	1.8	12.3

Standard Grate (shown): Type R.



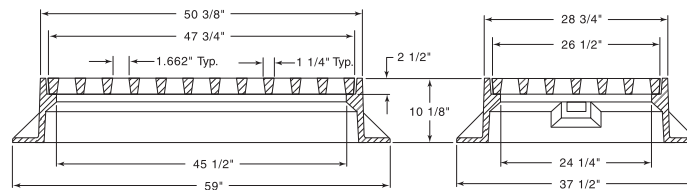
Type L

Type Q

Available with two-piece Type L grates, order **R-3572-2L**.
 Available with two-piece Type Q grates, order **R-3572-2Q**.

R-3572-A 4-Flange Gutter Inlet Frame, Diagonal Bar Grate

Heavy Duty

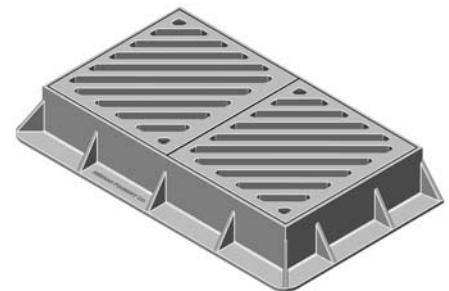
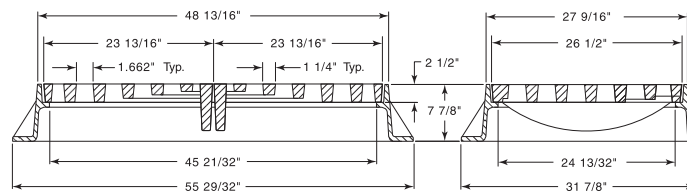


CATALOG NUMBER	GRATE TYPE	SQ. FT. OPEN	WEIR PERIMETER LINEAL FEET
R-3572-A	R	4.4	12.3

Grate is reversible for right or left hand flow.

R-3573-2D 3-Flange Gutter Inlet Frame, Double Gate

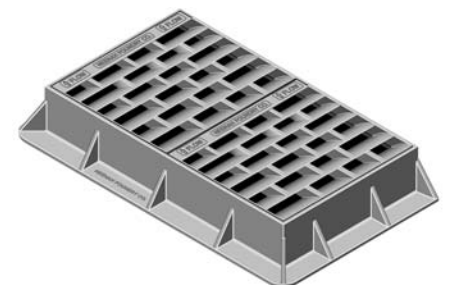
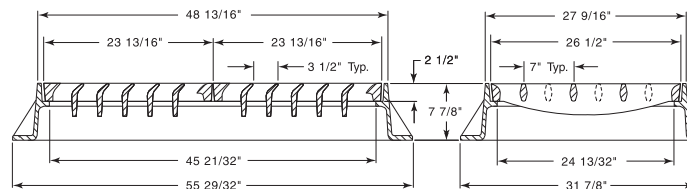
Heavy Duty



CATALOG NUMBER	GRATE TYPE	SQ. FT. OPEN	WEIR PERIMETER LINEAL FEET
R-3573-2D	R	3.8	12.3

R-3573-2L 3-Flange Gutter Inlet Frame, Double Gate

Heavy Duty



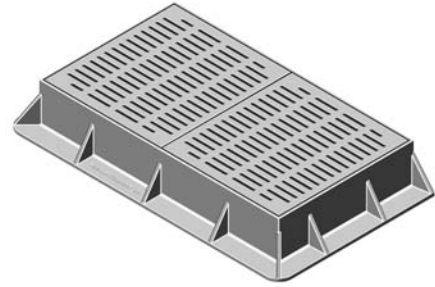
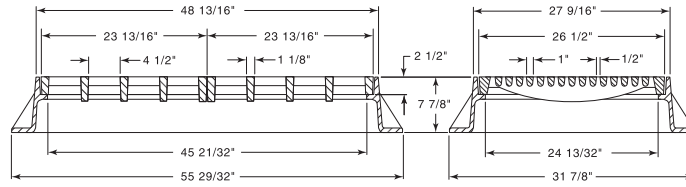
CATALOG NUMBER	GRATE TYPE	SQ. FT. OPEN	WEIR PERIMETER LINEAL FEET
R-3573-2L	L	4.6	12.3

ROLL &
 GUTTER
 INLETS
 5

■ Note: When specifying/ordering grates, refer to "Choosing the proper inlet grate" on pages 117-118.
 For a complete listing of FREE OPEN AREAS and WEIR PERIMETERS of all NEENAH grates, refer to pages 306-311.

R-3573-2Q
3-Flange Gutter Inlet Frame, Double Grate

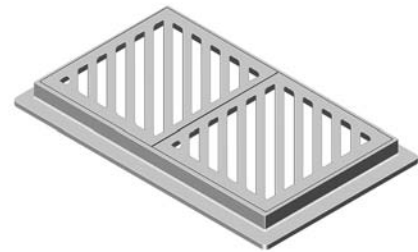
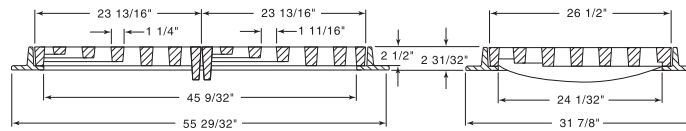
Heavy Duty



CATALOG NUMBER	GRATE TYPE	SQ. FT. OPEN	WEIR PERIMETER LINEAL FEET
R-3573-2Q	Q	1.8	12.3

R-3574-2D
4-Flange Gutter Inlet Frame, Double Grate

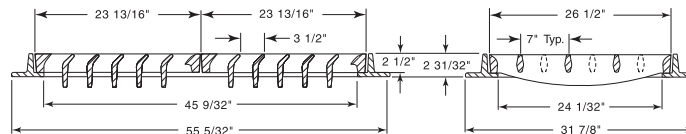
Heavy Duty



CATALOG NUMBER	GRATE TYPE	SQ. FT. OPEN	WEIR PERIMETER LINEAL FEET
R-3574-2D	R	3.8	12.3

R-3574-2L
4-Flange Gutter Inlet Frame, Double Grate

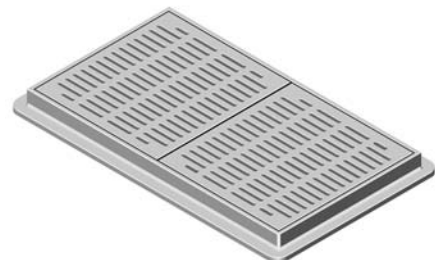
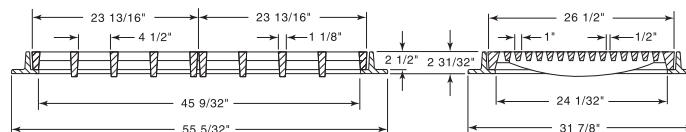
Heavy Duty



CATALOG NUMBER	GRATE TYPE	SQ. FT. OPEN	WEIR PERIMETER LINEAL FEET
R-3574-2L	L	4.6	12.3

R-3574-2Q
4-Flange Gutter Inlet Frame, Double Grate

Heavy Duty



CATALOG NUMBER	GRATE TYPE	SQ. FT. OPEN	WEIR PERIMETER LINEAL FEET
R-3574-2Q	Q	1.8	12.3

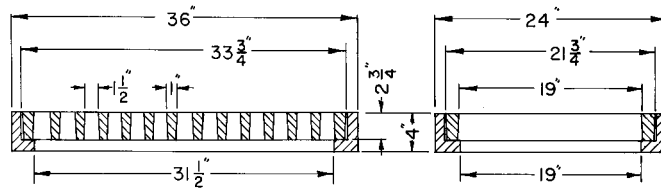
ROLL & GUTTER INLETS

5

■ Note: When specifying/ordering grates, refer to "Choosing the proper inlet grate" on pages 117-118.
 For a complete listing of FREE OPEN AREAS and WEIR PERIMETERS of all NEENAH grates, refer to pages 306-311.

R-3575
Gutter Inlet Frame, Grate

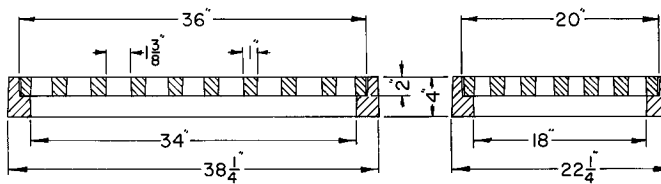
Heavy Duty



CATALOG NUMBER	GRATE TYPE	SQ. FT. OPEN	WEIR PERIMETER LINEAL FEET
R-3575	B	2.6	9.5

R-3576
Gutter Inlet Frame, Grate

Heavy Duty



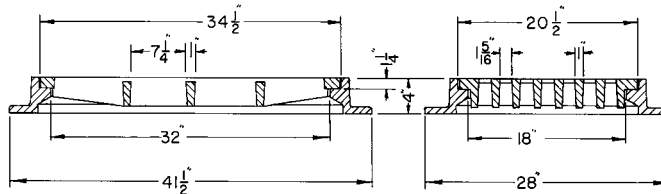
Grate is reversible.



CATALOG NUMBER	GRATE TYPE	SQ. FT. OPEN	WEIR PERIMETER LINEAL FEET
R-3576	R	2.4	9.3

R-3577
Gutter Inlet Frame, Grate

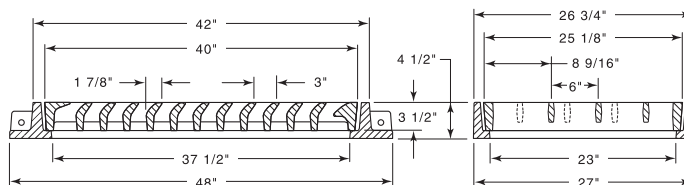
Heavy Duty



CATALOG NUMBER	GRATE TYPE	SQ. FT. OPEN	WEIR PERIMETER LINEAL FEET
R-3577	D	1.8	9.2

R-3578
Gutter Inlet Frame, Grate

Heavy Duty



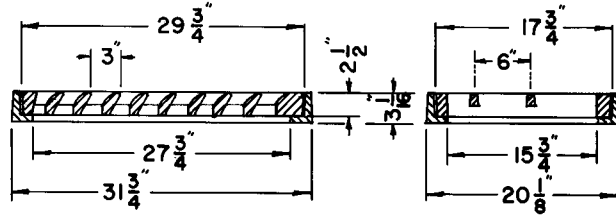
CATALOG NUMBER	GRATE TYPE	SQ. FT. OPEN	WEIR PERIMETER LINEAL FEET
R-3578	L	2.3	10.9

ROLL & GUTTER INLETS
 5

■ Note: When specifying/ordering grates, refer to "Choosing the proper inlet grate" on pages 117-118.
 For a complete listing of FREE OPEN AREAS and WEIR PERIMETERS of all NEENAH grates, refer to pages 306-311.

R-3580
Gutter Inlet Frame, Grate

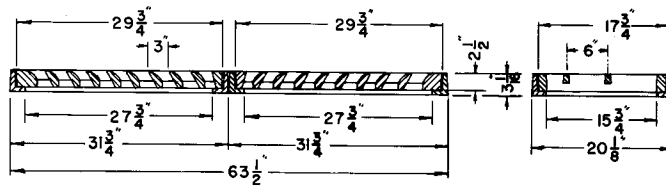
Heavy Duty



CATALOG NUMBER	GRATE TYPE	SQ. FT. OPEN	WEIR PERIMETER LINEAL FEET
R-3580	L	1.4	7.9

R-3580-1
Double Inlet Frame, Grate

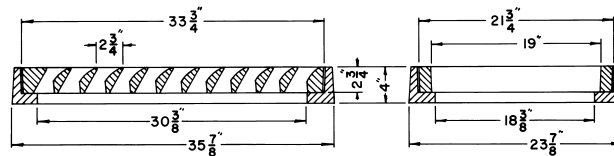
Heavy Duty



CATALOG NUMBER	GRATE TYPE	SQ. FT. OPEN	WEIR PERIMETER LINEAL FEET
R-3580-1	L	2.8	12.9

R-3581
Gutter Inlet Frame, Grate

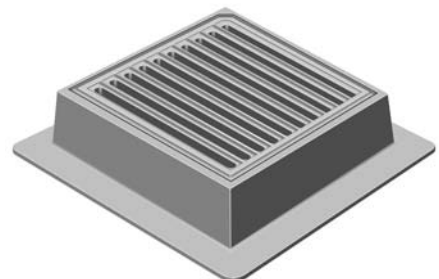
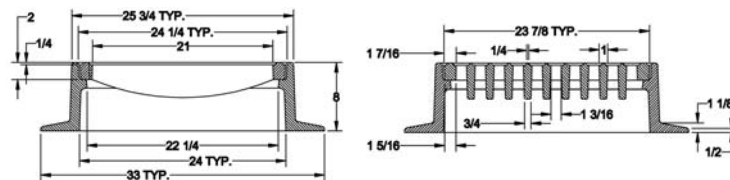
Heavy Duty



CATALOG NUMBER	GRATE TYPE	SQ. FT. OPEN	WEIR PERIMETER LINEAL FEET
R-3581	V	2.2	9.3

R-3588
4-Flange Gutter Inlet Frame, Grate

Heavy Duty

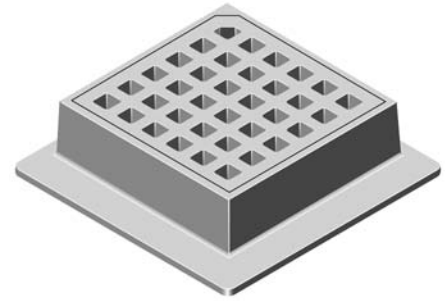
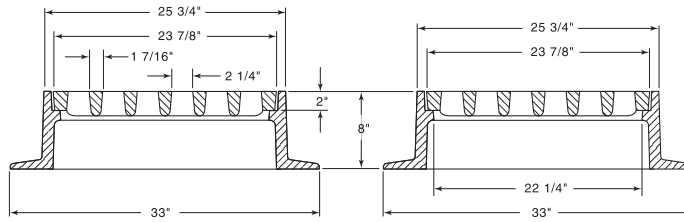


CATALOG NUMBER	GRATE TYPE	SQ. FT. OPEN	WEIR PERIMETER LINEAL FEET
R-3588	D	1.8	7.9

■ Note: When specifying/ordering grates, refer to "Choosing the proper inlet grate" on pages 117-118.
 For a complete listing of FREE OPEN AREAS and WEIR PERIMETERS of all NEENAH grates, refer to pages 306-311.

R-3588-A
4-Flange Gutter Inlet Frame, Grate

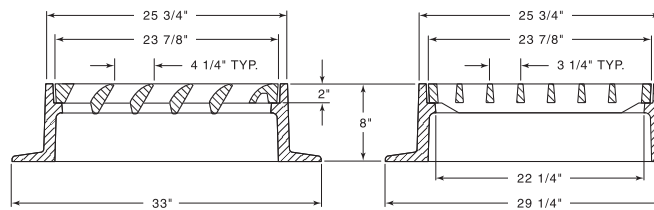
Heavy Duty



CATALOG NUMBER	GRATE TYPE	SQ. FT. OPEN	WEIR PERIMETER LINEAL FEET
R-3588-A	H	1.2	7.9

R-3588-LL
4-Flange Gutter Inlet Frame, Grate

Heavy Duty

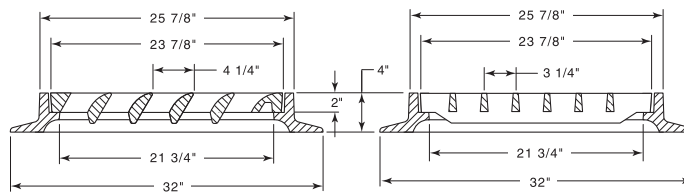


CATALOG NUMBER	GRATE TYPE	SQ. FT. OPEN	WEIR PERIMETER LINEAL FEET
R-3588-LL	L	1.6	7.9
R-3588-LR	L	1.6	7.9

Unit illustrated is for flow to the left. If flow to the right is required, order R-3588-LR.

R-3588-LL4
4-Flange Gutter Inlet Frame, Grate

Heavy Duty



CATALOG NUMBER	GRATE TYPE	SQ. FT. OPEN	WEIR PERIMETER LINEAL FEET
R-3588-LL4	L	1.6	7.9
R-3588-LR4	L	1.6	7.9

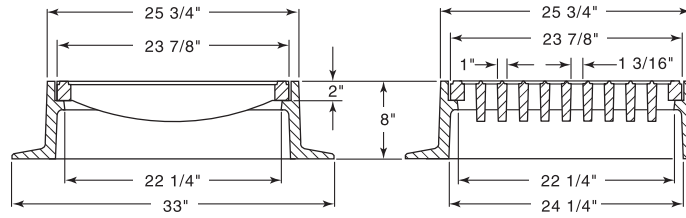
Unit illustrated is for flow to the left. If flow to the right is required, order R-3588-LR4.

ROLL &
 GUTTER
 INLETS
 5

■ Note: When specifying/ordering grates, refer to "Choosing the proper inlet grate" on pages 117-118.
 For a complete listing of FREE OPEN AREAS and WEIR PERIMETERS of all NEENAH grates, refer to pages 306-311.

R-3589
3-Flange Gutter Inlet Frame, Grate

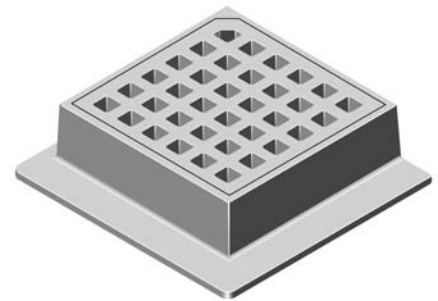
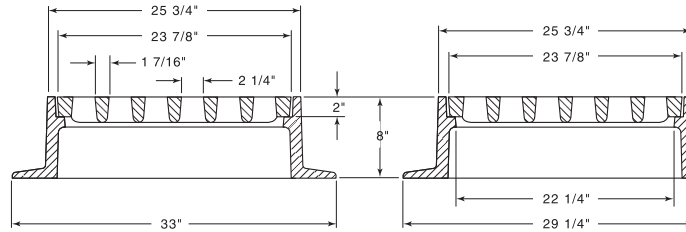
Heavy Duty



CATALOG NUMBER	GRATE TYPE	SQ. FT. OPEN	WEIR PERIMETER LINEAL FEET
R-3589	D	1.8	7.9

R-3589-A
3-Flange Gutter Inlet Frame, Grate

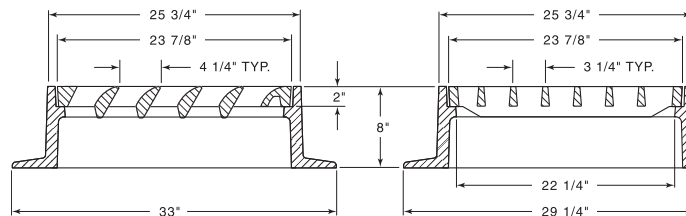
Heavy Duty



CATALOG NUMBER	GRATE TYPE	SQ. FT. OPEN	WEIR PERIMETER LINEAL FEET
R-3589-A	H	1.2	7.9

R-3589-LL
3-Flange Gutter Inlet Frame, Grate

Heavy Duty



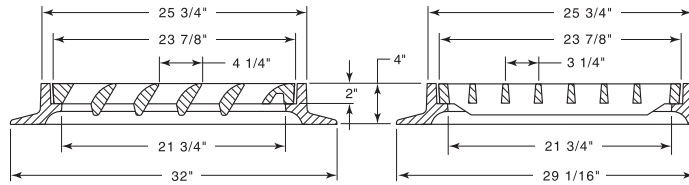
CATALOG NUMBER	GRATE TYPE	SQ. FT. OPEN	WEIR PERIMETER LINEAL FEET
R-3589-LL	L	1.5	7.9
R-3589-LR	L	1.5	7.9

Unit illustrated is for flow to the left. If flow to the right is required, order **R-3589-LR**.

■ Note: When specifying/ordering grates, refer to "Choosing the proper inlet grate" on pages 117-118.
 For a complete listing of FREE OPEN AREAS and WEIR PERIMETERS of all NEENAH grates, refer to pages 306-311.

R-3589-LL4
3-Flange Gutter Inlet Frame, Grate

Heavy Duty



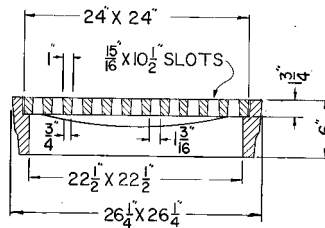
CATALOG NUMBER	GRATE TYPE	SQ. FT. OPEN	WEIR PERIMETER LINEAL FEET
R-3589-LL4	L	1.5	7.9
R-3589-LR4	L	1.5	7.9

Unit illustrated is for flow to the left. If flow to the right is required, order R-3589-LR4.

R-3591
Gutter Inlet Frame, Grate

Heavy Duty

CATALOG NUMBER	GRATE TYPE	SQ. FT. OPEN	WEIR PERIMETER LINEAL FEET
R-3591	A	1.5	8.0

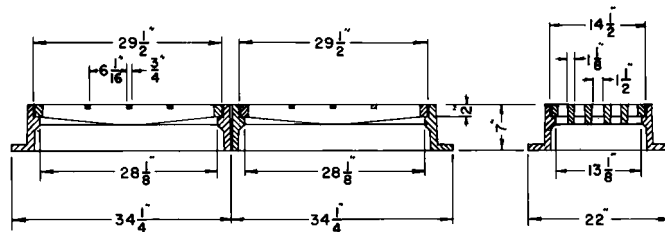


ROLL & GUTTER INLETS
5

R-3593
Double Unit Inlet Frame, Grate

Heavy Duty

CATALOG NUMBER	GRATE TYPE	SQ. FT. OPEN	WEIR PERIMETER LINEAL FEET
R-3593	C	2.5	12.3

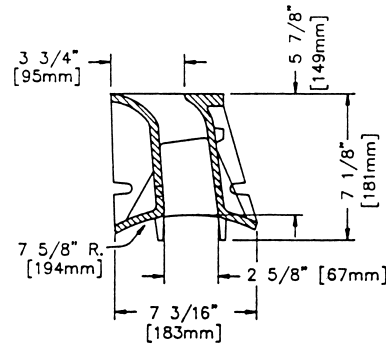


■ Note: When specifying/ordering grates, refer to "Choosing the proper inlet grate" on pages 117-118.
 For a complete listing of FREE OPEN AREAS and WEIR PERIMETERS of all NEENAH grates, refer to pages 306-311.

R-3599 Series Slotted Vane Drain, Sheetflow

Heavy Duty

NEENAH's Cast Iron Slotted Vane Drain offers ease of installation along with the superior vaned configuration to capture previously unexpected quantities of water when placed perpendicular to the flow. Installation is accomplished by sawing a slot in the top of conventional PVC pipe, placing the pipe on grade, installing the Cast Iron Slotted Vane Drain in place and pouring the concrete. When used in conjunction with a vane grate inlet, virtually all of the water in the street, which would normally bypass the catch basin, can be captured. This permits the spacing between inlets to be increased. An additional benefit is the added safety factor obtained should the catch basin be plugged or covered with snow. The unit may also be installed wherever sheet flow capture is required.



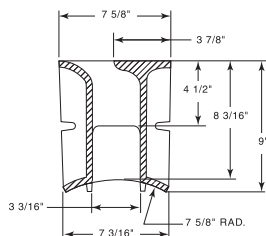
Illustrating R-3599-A

ROLL &
 GUTTER
 INLETS

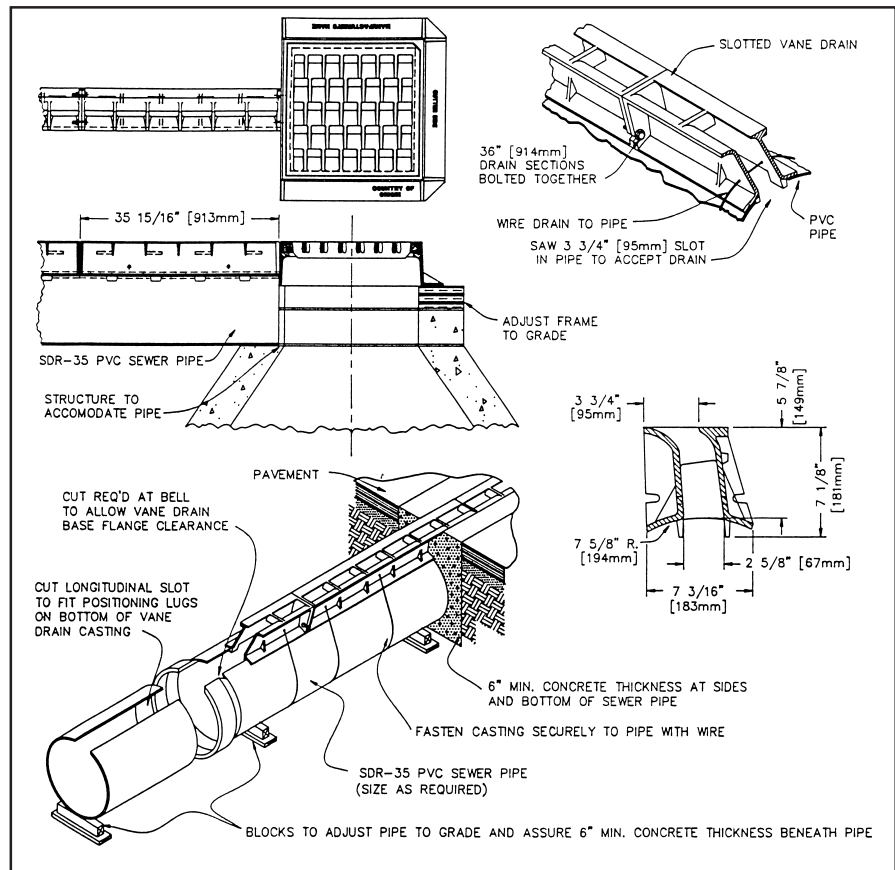
5

CATALOG NUMBER	GRATE TYPE	SQ. FT. OPEN	WEIR PERIMETER LINEAL FEET
R-3599-A	L	0.2 per ft.	2 per ft.
R-3599-B	L	0.2 per ft.	2 per ft.

Catalog No.	Type
R-3599-A	Heavy Duty
R-3599-B	Extra Heavy Duty



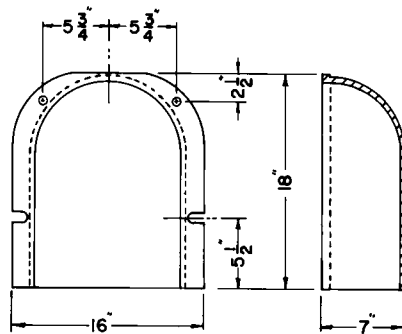
Illustrating R-3599-B



R-3700 to R-3708 Catch Basin Traps

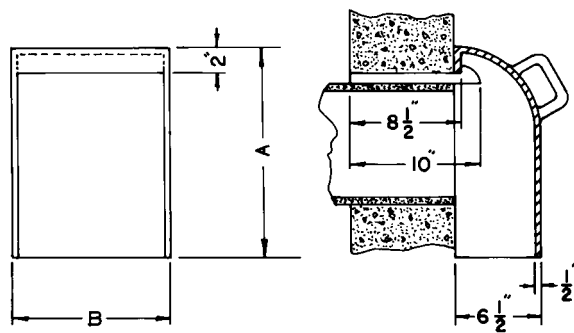
Cast iron catch basin traps are used extensively on sewer catch basins or manholes to prevent clogging on sanitary systems. They provide a waterseal against escaping gases. Traps with drop type catch basins provide effective means of keeping pipe lines entirely clean. The drop portion of inlet retains all solid material and the trap prevents all floating debris from entering outlet pipe.

R-3700 Catch Basin Trap



Pipe size to 12".
Setting method - 4 anchor bolts.
Install on flat wall only.

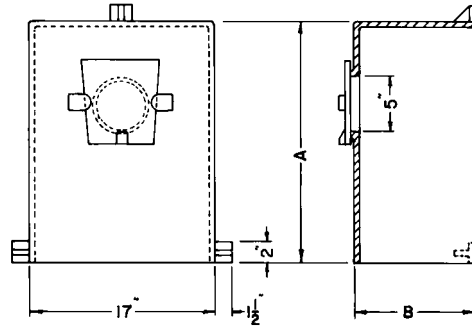
R-3701 Series Catch Basin Trap



Cast iron handle.
Locate bottom of trap minimum 6" below flow line.
Install on flat wall only.

Catalog No.	Dimensions in inches		Pipe Size	Setting Method
	A	B		
R-3701-6	16	12	to 6	on 2 hooks
R-3701-8	18	12	8	on 2 hooks
R-3701-10	20	12	10	on 2 hooks
R-3701-12	22	16	12	on 2 hooks
R-3701-15	25	19	15	on 2 hooks
R-3701-18	28	22	18	on 2 hooks

**R-3703 Series
Catch Basin Trap**



Cast in concrete wall only.

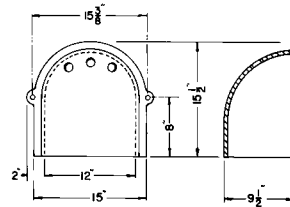
Catalog No.	Dimensions in inches			Setting Method
	A	B	Pipe Size	
R-3703-12	19	8 1/2	to 12	in wall
R-3703-15	22	11	15	in wall

ROLL & GUTTER INLETS

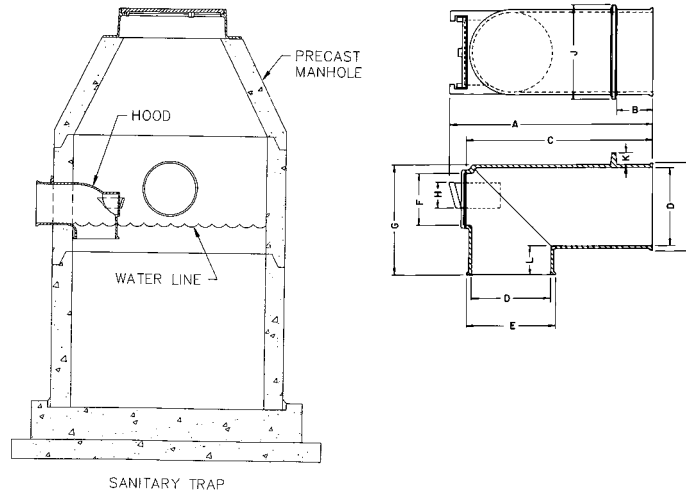
5

R-3704

Note vent holes.
Pipe size to 12".



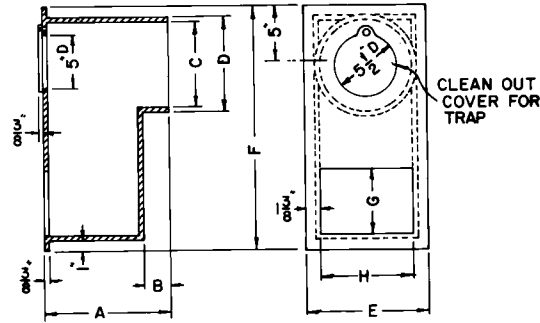
**R-3705 Series
Catch Basin Trap**



Cast or grouted in manhole wall. Pipe bell is not the structural support.
Specify whether gas sealed cleanout cover is required. Will be furnished plain if not requested.

Catalog No.	Dimensions in inches										
	A	B	C	D	E	F	G	H	J	K	L
R-3705-4	23 1/2	10	22	4	5 1/4	3	9	2	6	1 1/2	4 11/16
R-3705-6	25 3/4	9 1/4	24	6	7 1/2	4	11	2 1/2	8	1	4 13/16
R-3705-8	28	6 1/2	26	8	9 1/2	5	13	3	11	1 3/4	4 5/8
R-3705-10	28 1/2	5 1/2	26	10	11 1/2	6	16	3 1/2	13	2	-
R-3705-12	31 1/4	6	28 5/8	12	13 5/8	8	18	4	14	2	6
R-3705-15	34	6	31 1/2	15	16 5/8	8	21 1/4	4	16	2	5 5/8

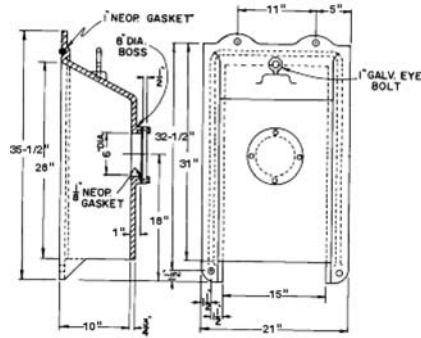
**R-3707 Series
Catch Basin Trap**



Available without flange on box if required.

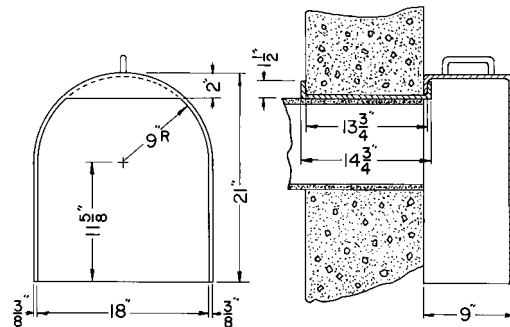
Catalog No.	Dimensions in inches							
	A	B	C	D	E	F	G	H
R-3707-12	11 1/2	2 1/2	12	12 3/4	14 3/4	28	9 1/2	12
R-3707-15	13	4	15	15 3/4	17 3/4	34 1/8	12	15

**R-3708-12
Catch Basin Trap**



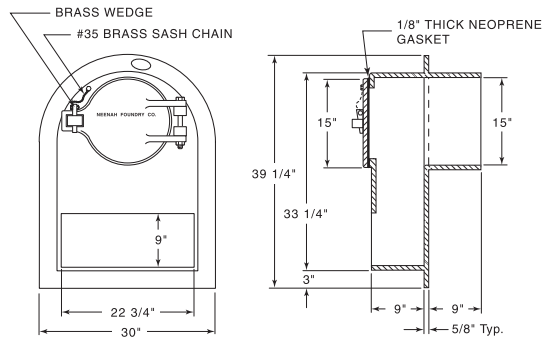
Unit bolts to existing flat concrete wall.

**R-3711
Catch Basin Hood with Hook**

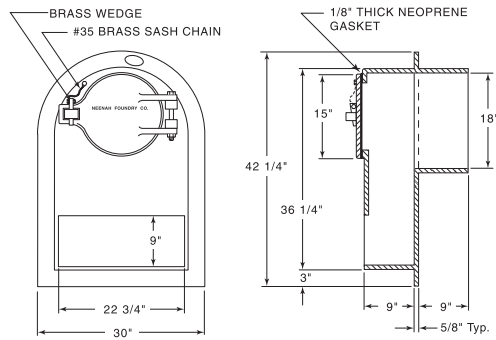


Install on flat wall only.

R-3712
Catch Basin Trap



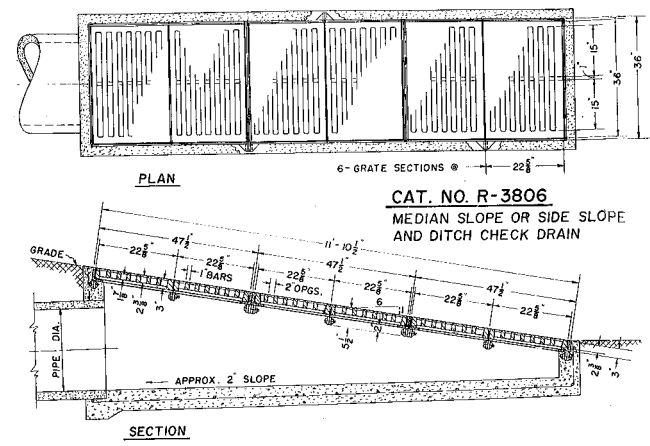
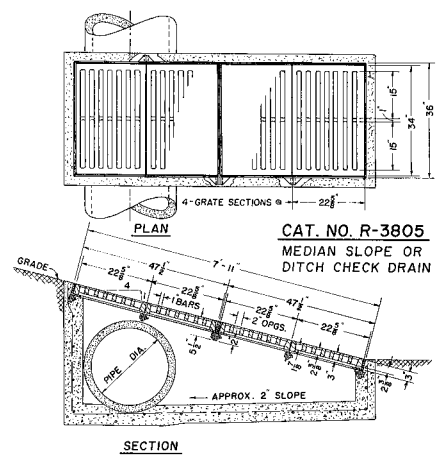
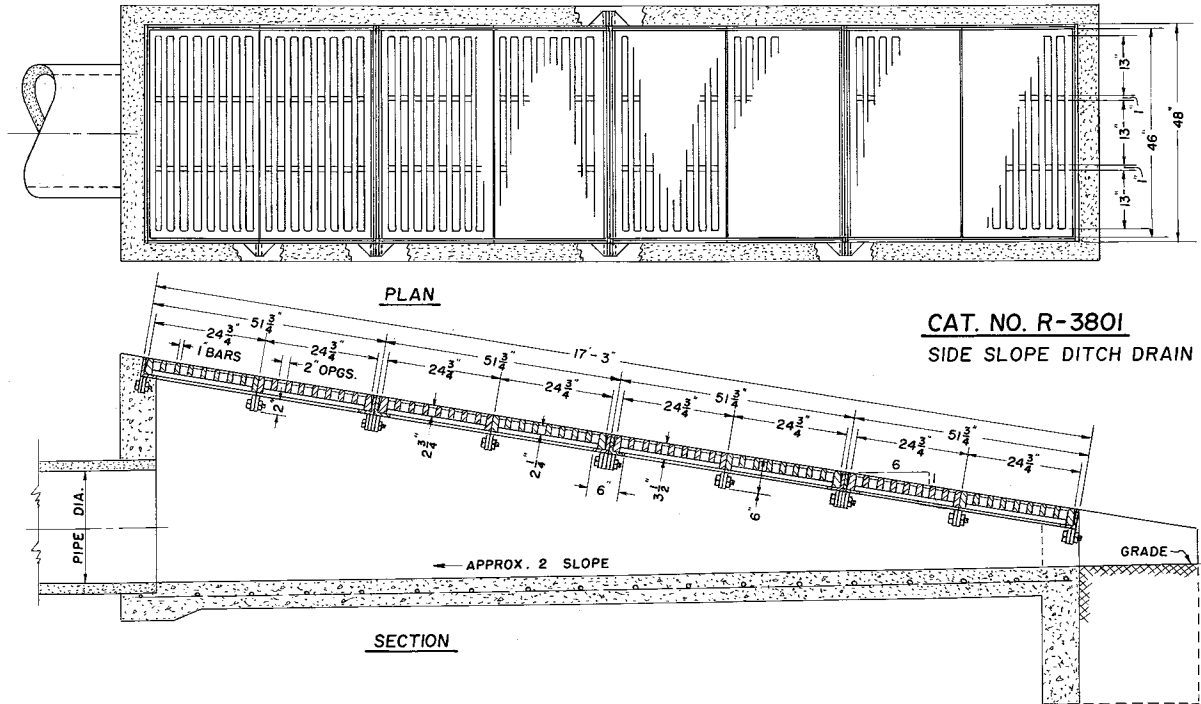
R-3713
Catch Basin Trap



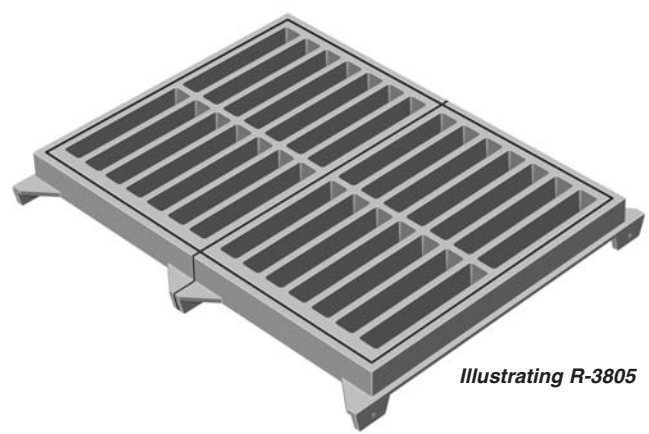
■ Note: When specifying/ordering grates, refer to "Choosing the proper inlet grate" on pages 117-118.
 For a complete listing of FREE OPEN AREAS and WEIR PERIMETERS of all NEENAH grates, refer to pages 306-311.

R-3801 - 3806 Series
Median Drain Frame, Grate

Heavy Duty



CATALOG NUMBER	GRATE TYPE	SQ. FT. OPEN	WEIR PERIMETER LINEAL FEET
R-3801	C	34.6	42.5
R-3805	C	11.6	21.8
R-3806	C	17.5	29.8



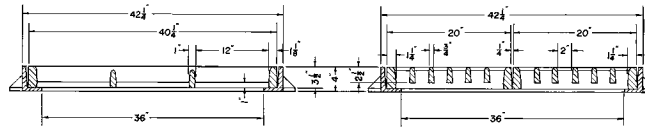
Illustrating R-3805

ROLL &
 GUTTER
 INLETS
 5

■ Note: When specifying/ordering grates, refer to “Choosing the proper inlet grate” on pages 117-118.
 For a complete listing of FREE OPEN AREAS and WEIR PERIMETERS of all NEENAH grates, refer to pages 306-311.

R-3807
Median Drain Frame, Double Grate

Heavy Duty

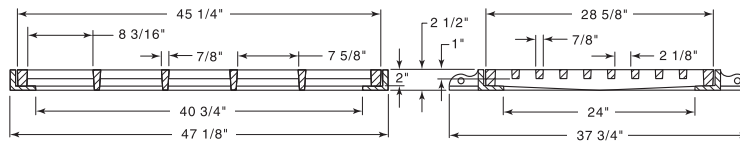


CATALOG NUMBER	GRATE TYPE	SQ. FT. OPEN	WEIR PERIMETER LINEAL FEET
R-3807	D	6.0	13.4

For flush-type inlet box in locations where median narrows. Recommended installation with load bearing bars parallel to roadway.

R-3808-1
Median Drain Frame, Grate

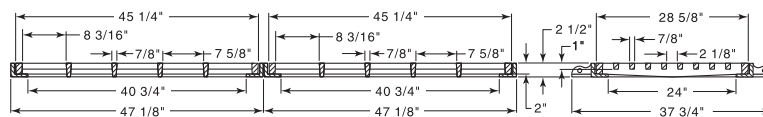
Heavy Duty



CATALOG NUMBER	GRATE TYPE	SQ. FT. OPEN	WEIR PERIMETER LINEAL FEET
R-3808-1	C	5.2	12.3

R-3808-2
Double Median Drain Frame, Grate

Heavy Duty



CATALOG NUMBER	GRATE TYPE	SQ. FT. OPEN	WEIR PERIMETER LINEAL FEET
R-3808-2	C	10.3	19.9

Neenah Foundry has two pattern shops operating 24 hours a day. On any given day, the pattern shops are in the process of building between 15 and 20 new patterns. Using CNC machines, they construct metal, plastic, and wood patterns for municipal castings. Everything from simple changes to existing patterns, to completely new patterns are built to customer specifications every day.