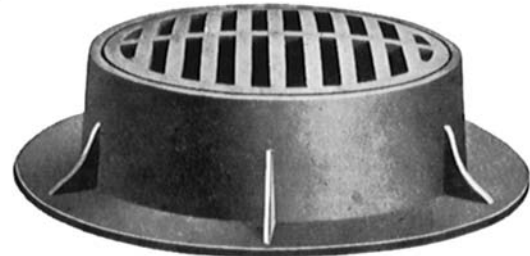


■ Note: When specifying/ordering grates, refer to "Choosing the proper inlet grate" on pages 117-118.
 For a complete listing of FREE OPEN AREAS and WEIR PERIMETERS of all NEENAH grates, refer to pages 306-311.

GRATE TYPES AND KEY TO DIMENSIONS IN SCHEDULES



Type C - Radial



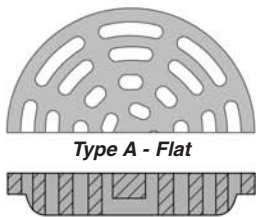
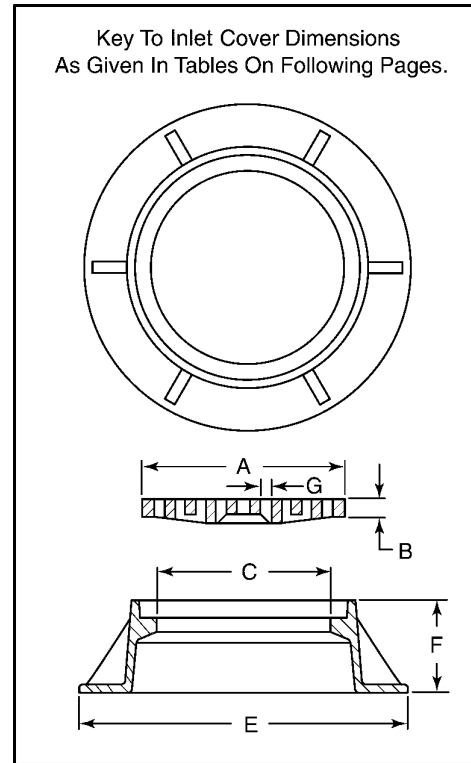
Type B - Convex



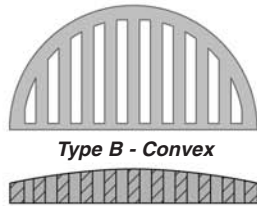
Type A - Flat



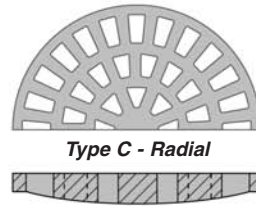
Type D - Flat



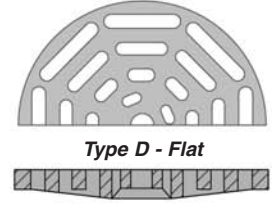
Type A - Flat



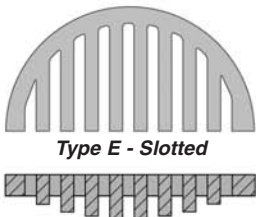
Type B - Convex



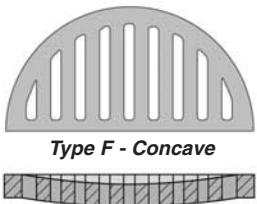
Type C - Radial



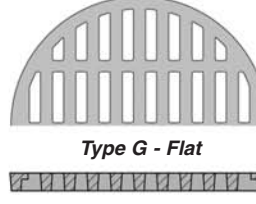
Type D - Flat



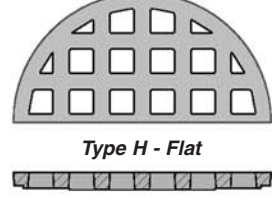
Type E - Slotted



Type F - Concave



Type G - Flat



Type H - Flat

■ Note: When specifying/ordering grates, refer to "Choosing the proper inlet grate" on pages 117-118.
 For a complete listing of FREE OPEN AREAS and WEIR PERIMETERS of all NEENAH grates, refer to pages 306-311.

INLET FRAMES AND GRATES STANDARD AND SPECIAL SIZES

The tables shown below summarize the various standard and special inlet frames and grates currently available. The reference column in most cases identifies the summary number and size with an illustrated number which is essentially the same casting. These catalog numbers are listed in numerical sequence in subsequent pages of this catalog. The type grate column indicates the standard grate style for the size you have chosen. Other grate types as shown on page 90 may also be available for the catalog number you have selected. For verification of alternate grate styles, check with your Neenah representative or our main office in Neenah, Wisconsin.

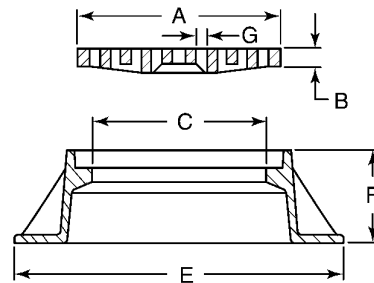
All inlet castings are furnished with machined bearing surfaces, unless otherwise noted.

Those catalog numbers marked with an asterisk are available with our non-rocking feature.

Free open area and interactive Hydraulic Calculations for most grates in this section are available at <http://www.neenahfoundry.com>.

Sorted by Catalog Reference

Catalog Reference	Dimensions in inches						Grate Type	Frame Reference
	A	B	C	E	F	G		
R-2014 *	22 3/4	1 3/4	21	34	9	-	D, C, E	R-2504
R-2030	23	1 3/4	20 7/8	36	9	1 1/8 to 1 1/2	D	R-1530
R-2050 *	23	1 1/2	21 1/16	35 7/16	8 7/8	-	D, C, F, G	R-1550-A
R-2060 *	22	1 1/2	20	36	6 1/2	-	C, A, B	R-1700-A
R-2070 *	23	1 1/2	21 1/16	35 7/16	8 7/8	-	G, D	R-1550-A
R-2080 *	22 1/2	1 3/4	20 1/2	36	6	-	D, B, C	R-2540
R-2090 *	22	1 1/2	20	35	9	-	A, B, C, E, G	R-2533
R-2100 *	22	1 1/2	20	33	8	-	C, A, E, F, G	R-1500
R-2110 *	22	1 1/2	20	32	6	-	A, E	R-1510-A
R-2112	22	1 1/2	20 1/2	28 1/4	6	-	C, A, B, E, F, G	R-1761
R-2120	22	1 1/2	20 15/32	27 9/16	3 15/16	-	C, A, F, G	R-2510
R-2250	38	1 1/2	36	49	10	1 x 8	G	R-2580-C
R-2251	36	1 1/2	34	45	8 5/8	1	G	R-1752
R-2255	32	1 3/8	30	46	10	-	C, G	R-1640-CS
R-2270	32	1 1/2	30	46	7	-	G, C	R-2580-A
R-2275	32	1 3/8	30	46	5 5/8	1 x 6 1/4	G	R-1640-C1S
R-2290	29	1 3/8	27	46	10	-	Special	R-1640-B
R-2290-A	29	1 3/8	27	46	5 5/8	-	Special	R-1640-B1
R-2290-B	28 3/4	1 3/8	27 1/8	37 1/4	7	-	Special	R-1753-A
R-2293	27 1/2	1	25 3/4	34 1/2	4	7/8	G	R-1773
R-2296	25 3/4	7/8	24	35 7/16	7	-	B, C, F	R-2577
R-2297	25 3/4	7/8	24 1/8	35 1/2	8	-	B, C, F	R-2577-A
R-2298	25 3/4	7/8	24 1/8	35 1/2	9	1 1/8	B	R-2577-B
R-2299	25 3/4	7/8	24 1/8	35 1/2	10	-	B, C, F	R-2577-C
R-2300	26	1 3/8	24	43	10	-	G, C	R-1640-A
R-2370	26	1 1/2	24 1/8	35 7/8	6 15/16	-	G, A, C, F	R-2501
R-2371	25 3/4	1 1/2	24	35	7 1/2	1	G	R-1643
R-2373	25 3/4	1	23 13/16	34 3/16	8	-	C	R-1922
R-2390	25 3/4	7/8	23	30 1/2	7	-	C	R-1590
R-2395-1	25 1/4	1 1/2	24	35 1/4	8	1 1/8	G	R-1769-A
R-2398	25 3/4	1, 7/8	23 5/8	31 7/8	8	1 1/8	G, F	R-2572
R-2401	26	1 7/8	23 1/2	35 3/4	8	1	G	R-1723
R-2401-A	24 3/4	1	23 3/8	33 1/4	7	3/4	G	R-1777
R-2402	24 3/4	1	22 5/8	36	7 1/4	-	C, G	R-1671
R-2404	25 5/8	2	23	38	10 1/2	1 1/16	G	R-2650
R-2405 *	25	1 1/2	23	38	9	-	C, A	R-1760



* Available with Non-Rocking feature if specified.
 ** Furnished standard with Non-Rocking feature.
 *** Light Duty.

■ Note: When specifying/ordering grates, refer to “Choosing the proper inlet grate” on pages 117-118.
 For a complete listing of FREE OPEN AREAS and WEIR PERIMETERS of all NEENAH grates, refer to pages 306-311.

Dimensions in inches								
Catalog Reference	A	B	C	E	F	G	Grate Type	Frame Reference
R-2410 **	24	1 1/2	22 1/4	34 21/32	7 15/32		H	R-1726-A
R-2411-A	25 3/8	1 1/4	23	38 1/2	7	3/4 x 5 1/2	G	R-1889
R-2412-A	23 3/4	1	23	31 1/4	4 5/8	1 3/8	G	R-1787
R-2412-A1	23 7/8	1	22 3/4	36 3/4	9	-	E	R-1658
R-2412-A3	23 7/8	1	22 3/8	34	7	-	E	R-1657-1
R-2412-A4	23 3/4	1 1/2	22 1/4	34	7	-	C	R-2668
R-2412-A5	23 7/8	1 1/4	22	35	6	2 1/4	H	R-1648
R-2412-A6	23 7/8	1 1/4	22	35	8	1 3/8	G	R-1649
R-2418	23 3/4	1	22	37 1/2	9	1 3/8	G	R-1771
R-2420-B	22 1/2	1 1/4	21 1/2	29	6	1 1/2 x 6 1/4	G	R-1776
R-2421-A	23 1/4	1 1/4	22	34	9	1 1/2	A	R-1736
R-2422-A1	23 3/4	1	21 3/4	35	7	-	C	R-1678-A
R-2422-C	23 3/4	1	21 21/32	37 13/32	7 3/32	1 3/8	G	R-2680
R-2423	23 3/4	1	21 15/32	37 13/32	8 7/8	-	G, C	R-1785
R-2424-A	22 1/2	2 5/8	20 1/4	34 1/4	6 1/4	1 1/8	G	R-1524-B
R-2425	23 3/8	3/4	21 1/8	34 1/4	4	1/2	G	R-1774
R-2427	22 3/4	1 3/4	20 1/2	36	5 1/2	-	D	R-1677
R-2427-A	23 3/4	1 1/4	21	37 1/2	7 1/16	1 3/8	G	R-1775
R-2428	23	1 1/2	21 1/16	35 7/16	8 7/8	-	C, D, F	R-1550-A
R-2429	22 3/4	1 3/4	21	31 1/8	14 1/2	adjustable	E, D, G	R-1672
R-2435	22 1/4	1	21	30	9 3/4	2 x 3 1/2	G	R-1762
R-2437	22 3/4	1 3/4	21	32 1/2	4	-	D, E	R-1647
R-2437-B	22 1/4	1	21	28 1/2	4 3/4	2 x 3 1/2	G	R-1762-A
R-2438	22 3/4	1 3/4	21 1/8	29	6	-	D, E	R-1960
R-2461-A	22	1 1/2	20 1/2	30	6	-	A, B, C, F	R-1711-A
R-2464 **	23	1 1/2	20 1/2	36	4	1 1/4	D	R-1689
R-2466-A	22	1 1/2	20	32	8 3/4	-	B, E	R-1765
R-2467	22 3/4	1 1/2	20	38	10	-	D, C, E	n/a
R-2471 *	22 3/4	1 1/2	20 3/32	37 13/32	9 27/32	-	D, E	R-1661
R-2471-B	22 1/2	1 1/2	20	34	9 1/2	-	D	R-1707
R-2474	21 3/4	1 1/8	20	36	8 1/2	-	A, E, G	R-1784
R-2475 *	22	1 1/2	20	36	6 1/2	-	C, A	R-1700-A
R-2481	21 3/4	1	19 3/4	32 1/4	8 3/4	-	A, Beehive	R-1920
R-2494	19 1/2	1 1/2	18	29	5 1/2	3/4	G	R-2525-G***
R-2496	18	1	17	25	4 1/2	1 1/8	G	R-2525-E
R-2498	15 3/4	1 3/8	14 11/16	23	4 11/16	3/4	G	R-2525-D
R-2498-A	15 3/4	1 3/8	14 3/4	21	4 3/4	3/4	G	R-2525-C
R-2498-B	15 3/4	1 3/8	15	22	3	3/4	G	R-1910-D
R-2499	12	1	11	19	4	1	G	R-2525-A
R-2500 *	24	1 1/2	22 1/4	34 21/32	7 15/32	2 1/4	H	R-1670-A
R-2501	26	1 1/2	24 1/8	35 7/8	6 15/16	-	G, A, F	R-1642
R-2502	22 3/4	1 3/4	21	34	7	-	D, C, E, G	R-1772
R-2504	22 3/4	1 3/4	21	34	9	-	D, C, G	R-1713
R-2510	22	1 1/2	20 15/32	27 9/16	3 15/16	-	C, A, E	R-1690
R-2510-1	15 3/4	1 3/8	15	22	3	3/4	G	R-1910-D
R-2510-2	27 1/2	1	25 3/4	34 1/2	4	7/8	G	R-1773
R-2510-A	22	1 1/2	20 1/2	28 1/4	6	-	Beehive	R-1761
R-2525-A	12	1	11	19	4	1	G	R-1791-A
R-2525-C	15 3/4	1 3/8	14 3/4	21	4 3/4	3/4	G	R-1910-C
R-2525-D	15 3/4	1 3/8	14 11/16	23	4 11/16	3/4	G	R-1910-B
R-2525-E	18	1	17	25	4 1/2	1 1/8	G	R-1791-E
R-2525-F	20 1/2	5/8	18	30	5	1	G	R-1791-F
R-2525-G	19 1/2	1 1/2	18	29	5 1/2	3/4	G	R-1791-G
R-2533 *	22	1 1/2	20	35	9	-	A, B, C, E, G	R-1710
R-2534	22 7/8	1 1/4	20 1/8	32	7	-	C	R-1570-A
R-2535	22	1 1/2	20	32	6	-	C, A, B, F	R-1510-A
R-2535-A	22	1 1/2	20 3/8	32	4	-	C, A, B, F	n/a
R-2540	22 1/2	1 3/4	20 1/2	36	6	-	D, C	R-1580
R-2540-A	22 1/2	1 3/4	20 1/2	38	6	-	D, C	n/a
R-2545	16	4	12 1/2	21 1/2	5	-	Special	n/a
R-2546	12 1/2	2 7/8	9 3/4	18	3	-	Special	n/a

* Available with Non-Rocking feature if specified.
 ** Furnished standard with Non-Rocking feature.
 *** Light Duty.

■ Note: When specifying/ordering grates, refer to “Choosing the proper inlet grate” on pages 117-118.
 For a complete listing of FREE OPEN AREAS and WEIR PERIMETERS of all NEENAH grates, refer to pages 306-311.

Dimensions in inches

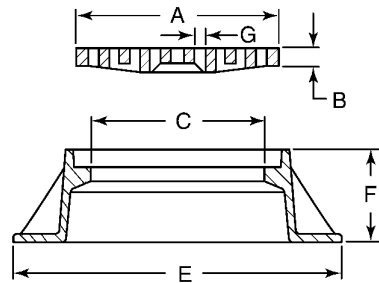
Catalog Reference	A	B	C	E	F	G	Grate Type	Frame Reference
R-2548	25 5/8	1	23 5/8	31 7/8	8	3 1/2	V	R-1728
R-2549	22 3/4	1 3/4	20	25	4 1/2	-	D, E	R-1645
R-2552	23 13/16	1 25/32	21 21/32	33 15/32	6 7/8	-	Special	R-1714
R-2553	24	1 3/8	22 1/2	31 1/4	3	1 3/32	G	R-1553
R-2554	24	1 3/8	22 1/2	34	7	1 3/32	G	R-1554
R-2555	24	1 3/8	21 3/4	34	8	1 3/32	G	R-1555
R-2556	25 3/4	1 3/8	24	34 1/2	8	-	G, F	R-1556
R-2556-A	25 3/4	1 3/8	24	34 1/2	4	-	G, F	R-1556-A
R-2557	31 3/4	1 3/8	30	41	6 1/2	1	G	R-1557
R-2557-A	31 7/8	1 1/2	30 9/32	40	6 1/2	1	G	R-1557-A
R-2557-A4	31 7/8	1 1/2	30	36	4	1	G	R-1557-A4
R-2558	31 3/4	1 3/8	30	41	8	1	G	R-1558
R-2559	25 3/4	1 3/8	24	38 1/4	8	-	F, G	R-1559
R-2560-A	12	1	11	19	4	-	Beehive	R-1791-A
R-2560-C	18 1/4	1 1/4	16 3/4	30	8	-	Beehive	R-1900-A
R-2560-C1	22	1 1/2	20 15/32	27 9/16	3 15/16	-	Beehive	R-1690
R-2560-C2	22	1 1/2	20 1/2	28 1/4	6	-	Beehive	R-1761
R-2560-D	22	1 1/2	20	35	9	-	Beehive	R-1710
R-2560-D1	22	1 1/2	20 15/32	27 9/16	3 15/16	-	Beehive	R-1690
R-2560-D2	22	1 1/2	20 1/2	28 1/4	6	-	Beehive	R-1761
R-2560-D3	22	1 1/2	20	35	9	-	Beehive	R-1710
R-2560-D5	22 3/4	1 1/2	21 1/4	34	4	-	Beehive	R-1647-A
R-2560-D6	22 3/4	1 1/2	21	34	9	-	Beehive	R-1713
R-2560-D7	22 3/4	1 1/2	21 1/4	34	4	-	Beehive	R-1647-A
R-2560-D8	22 3/4	1 1/2	21	34	9	-	Beehive	R-1713
R-2560-E	23	1 1/2	21 1/16	35 7/16	8 7/8	-	Beehive	R-1550-A
R-2560-E1	25 3/4	7/8	24	35 7/16	6 7/8	-	Beehive	R-1733
R-2560-E2	25 3/4	7/8	24	35 7/16	6 7/8	-	Beehive	R-1733
R-2560-E5	25 3/4	7/8	24 1/8	35 1/2	8	-	Beehive	R-1733-A
R-2560-E6	25 3/4	7/8	24 1/8	35 1/2	8	-	Beehive	R-1733-A
R-2560-E7	25 3/4	7/8	24 1/8	35 1/2	9	-	Beehive	R-1733-B
R-2560-E8	25 3/4	7/8	24 1/8	35 1/2	9	-	Beehive	R-1733-B
R-2560-E9	25 3/4	7/8	24 1/8	35 1/2	10	-	Beehive	R-1733-C
R-2560-E10	25 3/4	7/8	24 1/8	35 1/2	10	-	Beehive	R-1733-C
R-2560-EA	25 3/4	7/8	24 1/8	35 7/16	4	-	Beehive	R-1733-1
R-2560-EB	25 3/4	7/8	24 1/8	35 7/16	4	-	Beehive	R-1733-1
R-2560-G	32	1 1/2	30	46	7	-	Beehive	R-1740-B
R-2561	25 3/4	7/8	24	35 7/16	6 7/8	-	Beehive	R-1733
R-2561-A	25 3/4	7/8	24	35 7/16	6 7/8	-	Beehive	R-1733
R-2563	22	1 1/2	20 15/32	27 9/16	3 15/16	-	Beehive	R-1690
R-2564	22	1 1/2	20 1/2	28 1/4	6	-	Beehive	R-1761
R-2565-A	21	2 1/2	18	27 1/2	5	1 1/4	G	R-6110
R-2565-C	23	1 1/4	20	29 3/4	4	1 3/8	G	R-6111
R-2565-E	27	1 1/4	23 1/2	33 1/2	4	1 1/2	G	R-6114
R-2565-F	27	2 1/2	24	33 1/2	5	1 1/2	G	R-6115
R-2565-G	27	2 1/2	24	33 1/2	5	1 1/2	G	R-6115
R-2565-H	29	1 3/4	27	35	6	1	G	R-6116
R-2565-J	32 3/8	2	30	39 1/2	6	1 1/2	G	R-6117
R-2569	16 x 16	1/2	14 x 14	27	5	1/2	Q	n/a
R-2570	20 1/2	5/8	18	30	5	1	G	R-1791-F
R-2571-A	22	1 1/2	20 15/32	27 9/16	3 15/16	1 3/8	F	R-1690
R-2571-B	22	1 1/2	20	32	6	1 3/8	F	R-1510-A
R-2571-C	22	1 1/2	20	35	9	1 3/8	F	R-1710
R-2571-D	23	1 1/2	21 1/16	35 7/16	8 7/8	1 3/8	F	R-1550-A
R-2571-E	26	1 1/2	24 1/8	35 7/8	6 15/16	1 1/8	F	R-1642
R-2572	25 3/4	7/8	23 5/8	31 7/8	8	1 1/8	F	R-1728
R-2573	25 3/4	7/8	24	35 7/16	7	-	F, C	R-1733
R-2573-1	25 3/4	7/8	24	35 7/16	4	-	F, C	R-1733-1
R-2573-A	25 3/4	7/8	24	35 7/16	8	1 1/8	F	R-1733-A
R-2573-B	25 3/4	7/8	24	35 7/16	9	1 1/8	F	R-1733-B
R-2573-C	25 3/4	7/8	24	35 7/16	10	1 1/8	G	R-1733-C

* Available with Non-Rocking feature if specified.
 ** Furnished standard with Non-Rocking feature.
 *** Light Duty.

■ Note: When specifying/ordering grates, refer to "Choosing the proper inlet grate" on pages 117-118.
 For a complete listing of FREE OPEN AREAS and WEIR PERIMETERS of all NEENAH grates, refer to pages 306-311.

Catalog Reference	Dimensions in inches						Grate Type	Frame Reference
	A	B	C	E	F	G		
R-2577	25 3/4	7/8	24	35 7/16	7	-	B, C	R-1733
R-2577-1	25 3/4	7/8	24	35 7/16	4	-	B, C	R-1733-1
R-2577-A	25 3/4	7/8	24	35 7/16	8	1 1/8	B	R-1733-A
R-2577-B	25 3/4	7/8	24	35 7/16	9	1 1/8	B	R-1733-B
R-2577-C	25 3/4	7/8	24	35 7/16	10	1 1/8	B	R-1733-C
R-2578	23	1 1/2	21 1/16	35 7/16	8 7/8	-	C	R-1550-A
R-2579	22	1 1/2	20	35	9	1 1/4	B	R-1710
R-2580-A	31 7/8	1 1/2	30	46	7	1	G	R-1740-B
R-2580-A1	32	1 1/2	30	46	7	-	C	R-1740-B
R-2580-C	38	1 1/2	36	49	10	1 x 8	G	R-1740-D
R-2586-A	14 1/4	3/4	13	16	1 1/2	7/8	E	R-4380-9
R-2586-B	16	1	13 1/2	18 1/4	1 5/8	1 1/8	G	R-4380-13
R-2586-C	18	3/4	16	19 1/4	1 1/4	7/8	E	R-4380-14
R-2586-D	19 3/4	1	17 1/2	21 3/4	1 5/8	1	G	R-1799-D
R-2586-E	19 1/2	1 1/2	18	21 1/4	2	3/4	G	R-1799-E
R-2586-F	20 1/2	3/4	18 3/4	23	1 1/4	1	G	n/a
R-2586-G	22 1/4	1 1/2	20 3/8	24 3/8	2 1/4	1	G	R-1799-G
R-2586-H	22 3/4	1 3/4	20 1/2	25 1/2	3	1 1/2	E	R-1799-H
R-2586-K	24	3/4	21 3/4	26	1 1/4	1/2	G	R-1799-K
R-2586-M	26 5/8	3/4	24	28 1/4	1 3/8	7/8	G	R-4380-22
R-2586-N	30	1	27 1/2	33	1 3/4	1 1/4	G	n/a
R-2586-O	32	1	30	34	2	7/8	G	R-1799-O
R-2588-A	21 15/16	1 1/2	20	26	2 1/4	1 9/16	G	n/a
R-2588-B	25	1 1/2	23 1/2	30	2 1/4	7/8	G	n/a
R-2588-C	29	3	24	37	3 1/2	3/4	G	n/a
R-2595-A	22 3/4	1 3/4	21 1/4	34	4	-	D	R-1647-A
R-2650	25 5/8	2	23	38	10 1/2	-	G	R-1729
R-2668	23 3/4	1 1/2	22 1/4	34	7	-	C	R-1668
R-2680	23 3/4	1	21 21/32	37 13/32	7 3/32	1 3/8	G	R-1664-A
R-2682	27 7/8	1 3/8	26	38 1/4	4 3/8	-	A	R-1682
R-2750	31 7/8	1 3/8	30	46	5 5/8	1/2	Q	R-1750-C1S

* Available with Non-Rocking feature if specified.
 ** Furnished standard with Non-Rocking feature.
 *** Light Duty.



Illustrating R-2050

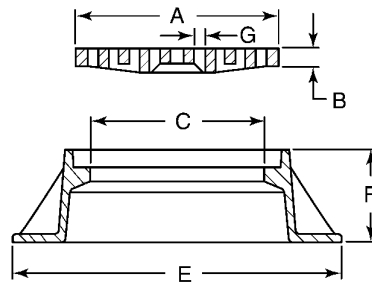
Sorted by Clear Opening, Dimension "C"

Catalog Reference	Dimensions in inches						Grate Type	Frame Reference
	A	B	C	E	F	G		
R-2250	38	1 1/2	36	49	10	1 x 8	G	R-2580-C
R-2580-C	38	1 1/2	36	49	10	1 x 8	G	R-1740-D
R-2251	36	1 1/2	34	45	8 5/8	1	G	R-1752
R-2557-A	31 7/8	1 1/2	30 9/32	40	6 1/2	1	G	R-1557-A
R-2565-J	32 3/8	2	30	39 1/2	6	1 1/2	G	R-6052-J
R-2586-O	32	1	30	34	2	7/8	G	R-1799-O
R-2255	32	1 3/8	30	46	10	-	C, G	R-1640-CS
R-2275	32	1 3/8	30	46	5 5/8	1 x 6 1/4	G	R-1640-C1S
R-2750	31 7/8	1 3/8	30	46	5 5/8	1/2	Q	R-1750-C1S
R-2270	32	1 1/2	30	46	7	-	G, C	R-2580-A
R-2560-G	32	1 1/2	30	46	7	-	Beehive	R-1740-B

■ Note: When specifying/ordering grates, refer to “Choosing the proper inlet grate” on pages 117-118.
 For a complete listing of FREE OPEN AREAS and WEIR PERIMETERS of all NEENAH grates, refer to pages 306-311.

Dimensions in inches

Catalog Reference	A	B	C	E	F	G	Grate Type	Frame Reference
R-2580-A1	32	1 1/2	30	46	7	-	C	R-1740-B
R-2557-A4	31 7/8	1 1/2	30	36	4	-	G	R-1557-A4
R-2580-A	31 7/8	1 1/2	30	46	7	1	G	R-1740-B
R-2557	31 3/4	1 3/8	30	41	6 1/2	1	G	R-1557
R-2558	31 3/4	1 3/8	30	41	8	1	G	R-1558
R-2586-N	30	1	27 1/2	33	1 3/4	1 1/4	G	n/a
R-2290-B	28 3/4	1 3/8	27 1/8	37 1/4	7	-	Special	R-1753-A
R-2290	29	1 3/8	27	46	10	-	Special	R-1640-B
R-2290-A	29	1 3/8	27	46	5 5/8	-	Special	R-1640-B1
R-2565-H	29	1 3/4	27	35	6	1	G	R-6116
R-2682	27 7/8	1 3/8	26	38 1/4	4 3/8	-	A	R-1682
R-2293	27 1/2	1	25 3/4	34 1/2	4	7/8	G	R-1773
R-2510-2	27 1/2	1	25 3/4	34 1/2	4	7/8	G	R-1773
R-2501	26	1 1/2	24 1/8	35 7/8	6 15/16	-	G, A, F	R-1642
R-2297	25 3/4	7/8	24 1/8	35 1/2	8	-	B, C, F	R-2577-A
R-2298	25 3/4	7/8	24 1/8	35 1/2	9	1 1/8	B	R-2577-B
R-2299	25 3/4	7/8	24 1/8	35 1/2	10	-	B, C, F	R-2577-C
R-2560-E5	25 3/4	7/8	24 1/8	35 1/2	8	-	Beehive	R-1733-A
R-2560-E6	25 3/4	7/8	24 1/8	35 1/2	8	-	Beehive	R-1733-A
R-2560-E7	25 3/4	7/8	24 1/8	35 1/2	9	-	Beehive	R-1733-B
R-2560-E8	25 3/4	7/8	24 1/8	35 1/2	9	-	Beehive	R-1733-B
R-2560-E9	25 3/4	7/8	24 1/8	35 1/2	10	-	Beehive	R-1733-C
R-2560-E10	25 3/4	7/8	24 1/8	35 1/2	10	-	Beehive	R-1733-C
R-2560-EA	25 3/4	7/8	24 1/8	35 7/16	4	-	Beehive	R-1733-1
R-2560-EB	25 3/4	7/8	24 1/8	35 7/16	4	-	Beehive	R-1733-1
R-2370	26	1 1/2	24 1/8	35 7/8	6 15/16	-	G, A, C, F	R-2501
R-2571-E	26	1 1/2	24 1/8	35 7/8	6 15/16	1 1/8	F	R-1642
R-2296	25 3/4	7/8	24	35 7/16	7	-	B, C, F	R-2577
R-2560-E1	25 3/4	7/8	24	35 7/16	6 7/8	-	Beehive	R-1733
R-2560-E2	25 3/4	7/8	24	35 7/16	6 7/8	-	Beehive	R-1733
R-2588-C	29	3	24	37	3 1/2	3/4	G	n/a
R-2565-F	27	2 1/2	24	33 1/2	5	1 1/2	G	R-6052-F
R-2565-G	27	2 1/2	24	33 1/2	5	1 1/2	G	R-6052-G
R-2586-M	26 5/8	3/4	24	28 1/4	1 3/8	7/8	G	R-4388-22



R-2300	26	1 3/8	24	43	10	-	G, C	R-1640-A
R-2556	25 3/4	1 3/8	24	34 1/2	8	-	G, F	R-1556
R-2556-A	25 3/4	1 3/8	24	34 1/2	4	-	G, F	R-1556-A
R-2559	25 3/4	1 3/8	24	38 1/4	8	-	F, G	R-1559
R-2371	25 3/4	1 1/2	24	35	7 1/2	1	G	R-1643
R-2561	25 3/4	7/8	24	35 7/16	6 15/16	-	Beehive	R-1733
R-2561-A	25 3/4	7/8	24	35 7/16	6 15/16	-	Beehive	R-1733
R-2573	25 3/4	7/8	24	35 7/16	7	-	F, C	R-1733
R-2573-1	25 3/4	7/8	24	35 7/16	4	-	F, C	R-1733-1
R-2573-A	25 3/4	7/8	24	35 7/16	8	1 1/8	F	R-1733-A
R-2573-B	25 3/4	7/8	24	35 7/16	9	1 1/8	F	R-1733-B
R-2573-C	25 3/4	7/8	24	35 7/16	10	1 1/8	G	R-1733-C
R-2577	25 3/4	7/8	24	35 7/16	7	-	B, C	R-1733
R-2577-1	25 3/4	7/8	24	35 7/16	4	-	B, C	R-1733-1
R-2577-A	25 3/4	7/8	24	35 7/16	8	1 1/8	B	R-1733-A
R-2577-B	25 3/4	7/8	24	35 7/16	9	1 1/8	B	R-1733-B
R-2577-C	25 3/4	7/8	24	35 7/16	10	1 1/8	B	R-1733-C

■ Note: When specifying/ordering grates, refer to “Choosing the proper inlet grate” on pages 117-118.
 For a complete listing of FREE OPEN AREAS and WEIR PERIMETERS of all NEENAH grates, refer to pages 306-311.

Dimensions in inches								
Catalog Reference	A	B	C	E	F	G	Grate Type	Frame Reference
R-2395-1	25 1/4	1 1/2	24	35 1/4	8	1 1/8	G	R-1769-A
R-2373	25 3/4	1	23 13/16	34 3/16	8	-	C	R-1922
R-2572	25 3/4	7/8	23 5/8	31 7/8	8	1 1/8	F	R-1728
R-2548	25 5/8	1	23 5/8	31 7/8	8	3 1/2	V	R-1728
R-2398	25 3/4	1 7/8	23 5/8	31 7/8	8	1 1/8	G, F	R-2572
R-2565-E	27	1 1/4	23 1/2	33 1/2	4	1 1/2	G	R-6052-D
R-2401	26	1 7/8	23 1/2	35 3/4	8	-	G	R-1723
R-2588-B	25	1 1/2	23 1/2	30	2 1/4	7/8	G	n/a
R-2401-A	24 3/4	1	23 3/8	33 1/4	7	3/4	G	R-1777
R-2390	25 3/4	7/8	23	30 1/2	7	-	C	R-1590
R-2404	25 5/8	2	23	38	10 1/2	1 1/16	G	R-2650
R-2650	25 5/8	2	23	38	10 1/2	-	G	R-1729
R-2411-A	25 3/8	1 1/4	23	38 1/2	7	3/4 x 5 1/2	G	R-1889
R-2405 *	25	1 1/2	23	38	9	-	C, A	R-1760
R-2412-A	23 3/4	1	23	31 1/4	4 5/8	1 3/8	G	R-1787
R-2412-A1	23 7/8	1	22 3/4	36 3/4	9	-	E	R-1658
R-2402	24 3/4	1	22 5/8	36	7 1/4	-	C, G	R-1671
R-2553	24	1 3/8	22 1/2	31 1/4	3	1 3/32	G	R-1553
R-2554	24	1 3/8	22 1/2	34	7	1 3/32	G	R-1554
R-2412-A3	23 7/8	1	22 3/8	34	7	-	E	R-1657-1
R-2410 **	24	1 1/2	22 1/4	34 21/32	7 15/32	-	H	R-1726-A
R-2500 *	24	1 1/2	22 1/4	34 21/32	7 15/32	2 1/4	H	R-1670-A
R-2412-A4	23 3/4	1 1/2	22 1/4	34	7	-	C	R-2668
R-2668	23 3/4	1 1/2	22 1/4	34	7	-	C	R-1668
R-2418	23 3/4	1	22	37 1/2	9	1 3/8	G	R-1771
R-2421-A	23 1/4	1 1/4	22	34	9	1 1/2	A	R-1736
R-2412-A5	23 7/8	1 1/4	22	35	6	2 1/4	H	R-1648
R-2412-A6	23 7/8	1 1/4	22	35	8	1 3/8	G	R-1649
R-2555	24	1 3/8	21 3/4	34	8	1 3/32	G	R-1555
R-2422-A1	23 3/4	1	21 3/4	35	7	-	C	R-1678-A
R-2586-K	24	3/4	21 3/4	26	1 1/4	1/2	G	R-1799-K
R-2552	23 13/16	1 25/32	21 21/32	33 15/32	6 7/8	-	Special	R-1714
R-2680	23 3/4	1	21 21/32	37 13/32	7 3/32	1 3/8	G	R-1664-A
R-2422-C	23 3/4	1	21 21/32	37 13/32	7 3/32	1 3/8	G	R-2680
R-2420-B	22 1/2	1 1/4	21 1/2	29	6	1 1/2 x 6 1/4	G	R-1776
R-2423	23 3/4	1	21 15/32	37 13/32	8 7/8	-	G, C	R-1785
R-2560-D7	22 3/4	1 1/2	21 1/4	34	4	-	Beehive	R-1647-A
R-2595-A	22 3/4	1 3/4	21 1/4	34	4	-	D	R-1647-A
R-2560-D5	22 3/4	1 1/2	21 1/4	34	4	-	Beehive	R-1647-A
R-2425	23 3/8	3/4	21 1/8	34 1/4	4	1/2	G	R-1774
R-2438	22 3/4	1 3/4	21 1/8	29	6	-	D, E,	R-1960
R-2050 *	23	1 1/2	21 1/16	35 7/16	8 7/8	-	D, C, F, G	R-1550-A
R-2070 *	23	1 1/2	21 1/16	35 7/16	8 7/8	-	G, D	R-1550-A
R-2428	23	1 1/2	21 1/16	35 7/16	8 7/8	-	C, D, F	R-1550-A
R-2560-E	23	1 1/2	21 1/16	35 7/16	8 7/8	-	Beehive	R-1550-A
R-2571-D	23	1 1/2	21 1/16	35 7/16	8 7/8	1 3/8	F	R-1550-A
R-2578	23	1 1/2	21 1/16	35 7/16	8 7/8	-	C	R-1550-A
R-2427-A	23 3/4	1 1/4	21	37 1/2	7 1/16	1 3/8	G	R-1775
R-2437	22 3/4	1 3/4	21	32 1/2	4	-	D, E	R-1647
R-2560-D6	22 3/4	1 1/2	21	34	9	-	Beehive	R-1713
R-2560-D8	22 3/4	1 1/2	21	34	9	-	Beehive	R-1713
R-2014 *	22 3/4	1 3/4	21	34	9	-	D, C, E	R-2504
R-2429	22 3/4	1 3/4	21	31 1/8	14 1/2 adjustable	-	E, D, G	R-1672
R-2502	22 3/4	1 3/4	21	34	7	-	D, C, E, G	R-1772
R-2504	22 3/4	1 3/4	21	34	9	-	D, C, G	R-1713
R-2435	22 1/4	1	21	30	9 3/4	2 x 3 1/2	G	R-1762
R-2437-B	22 1/4	1	21	28 1/2	4 3/4	2 x 3 1/2	G	R-1762-A
R-2030	23	1 3/4	20 3/4	36	9	1 1/8 x 1 1/2	D	R-1530
R-2427	22 3/4	1 3/4	20 1/2	36	5 1/2	-	D	R-1677
R-2464 **	23	1 1/2	20 1/2	36	4	1 1/4	D	R-1689
R-2586-H	22 3/4	1 3/4	20 1/2	25 1/2	3	1 1/2	E	R-1799-H
R-2080 *	22 1/2	1 3/4	20 1/2	36	6	-	D, B, C	R-2540
R-2540	22 1/2	1 3/4	20 1/2	36	6	-	D, C	R-1580
R-2540-A	22 1/2	1 3/4	20 1/2	38	6	-	D, C	n/a

INLET FRAMES & GRATES 2

■ Note: When specifying/ordering grates, refer to “Choosing the proper inlet grate” on pages 117-118.
 For a complete listing of FREE OPEN AREAS and WEIR PERIMETERS of all NEENAH grates, refer to pages 306-311.

Dimensions in inches

Catalog Reference	A	B	C	E	F	G	Grate Type	Frame Reference
R-2112	22	1 1/2	20 1/2	28 1/4	6	-	C, A, B, E, F, G	R-1761
R-2461-A	22	1 1/2	20 1/2	30	6	-	A, B, C, F	R-1711-A
R-2510-A	22	1 1/2	20 1/2	28 1/4	6	-	Beehive	R-1761
R-2560-C2	22	1 1/2	20 1/2	28 1/4	6	-	Beehive	R-1761
R-2560-D2	22	1 1/2	20 1/2	28 1/4	6	-	Beehive	R-1761
R-2564	22	1 1/2	20 1/2	28 1/4	6	-	Beehive	R-1761
R-2563	22	1 1/2	20 15/32	27 9/16	3 15/16	-	Beehive	R-1690
R-2510	22	1 1/2	20 15/32	27 9/16	3 15/16	-	C, A, E	R-1690
R-2120	22	1 1/2	20 15/32	27 9/16	3 15/16	-	C, A, F, G	R-2510
R-2560-C1	22	1 1/2	20 15/32	27 9/16	3 15/16	-	Beehive	R-1690
R-2560-D1	22	1 1/2	20 15/32	27 9/16	3 15/16	-	Beehive	R-1690
R-2571-A	22	1 1/2	20 15/32	27 9/16	3 15/16	1 3/8	F	R-1690
R-2586-G	22 1/4	1 1/2	20 3/8	24 3/8	2 1/4	1	G	R-1799-G
R-2535-A	22	1 1/2	20 3/8	32	4	-	C, A, B, F	n/a
R-2424-A	22 1/2	2 5/8	20 1/4	34 1/4	6 1/4	1 1/8	G	R-1524-B
R-2534	22 7/8	1 1/4	20 1/8	32	7	-	C	R-1570-A
R-2471 *	22 3/4	1 1/2	20 3/32	37 13/32	9 27/32	-	D, E	R-1661
R-2565-C	23	1 1/4	20	29 3/4	4	1 3/8	G	R-6052-C
R-2549	22 3/4	1 3/4	20	25	4 1/2	-	D, E	R-1645
R-2467	22 3/4	1 1/2	20	38	10	-	D, C, E	n/a
R-2471-B	22 1/2	1 1/2	20	34	9 1/2	-	D	R-1707
R-2466-A	22	1 1/2	20	32	8 3/4	-	B, E	R-1765
R-2060 *	22	1 1/2	20	36	6 1/2	-	C, A, B	R-1700-A
R-2090 *	22	1 1/2	20	35	9	-	A, B, C, E, G	R-2533
R-2100 *	22	1 1/2	20	33	8	-	C, A, E, F, G	R-1500
R-2110 *	22	1 1/2	20	32	6	-	A, E	R-1510-A
R-2475 *	22	1 1/2	20	36	6 1/2	-	C, A, B	R-1700-A
R-2533 *	22	1 1/2	20	35	9	-	A, B, C, E, G	R-1710
R-2535	22	1 1/2	20	32	6	-	C, A, B, F	R-1510-A
R-2560-D	22	1 1/2	20	35	9	-	Beehive	R-1710
R-2560-D3	22	1 1/2	20	35	9	-	Beehive	R-1710
R-2571-B	22	1 1/2	20	32	6	1 3/8	F	R-1510-A
R-2571-C	22	1 1/2	20	35	9	1 3/8	F	R-1710
R-2579	22	1 1/2	20	35	9	1 1/4	B	R-1710
R-2588-A	21 15/16	1 1/2	20	26	2 1/4	1 9/16	G	n/a
R-2474	21 3/4	1 1/8	20	36	8 1/2	-	A, E, G	R-1784
R-2481	21 3/4	1	19 3/4	32 1/4	8 3/4	-	A, Beehive	R-1920
R-2586-F	20 1/2	3/4	18 3/4	23	1 1/4	1	G	n/a
R-2565-A	21	2 1/2	18	27 1/2	5	1 1/4	G	R-6052-A
R-2525-F	20 1/2	5/8	18	30	5	1	G	R-1791-F
R-2570	20 1/2	5/8	18	30	5	1	G	R-1791-F
R-2494	19 1/2	1 1/2	18	29	5 1/2	3/4	G	R-2525-G***
R-2525-G	19 1/2	1 1/2	18	29	5 1/2	3/4	G	R-1791-G
R-2586-E	19 1/2	1 1/2	18	21 1/4	2	3/4	G	n/a
R-2586-D	19 3/4	1	17 1/2	21 3/4	1 5/8	1	G	n/a
R-2496	18	1	17	25	4 1/2	1 1/8	G	R-2525-E
R-2525-E	18	1	17	25	4 1/2	1 1/8	G	R-1791-E
R-2560-C	18 1/4	1 1/4	16 3/4	30	8	-	Beehive	R-1900-A
R-2586-C	18	3/4	16	19 1/4	1 1/4	7/8	E	n/a
R-2498-B	15 3/4	1 3/8	15	22	3	3/4	G	R-1910-D
R-2510-1	15 3/4	1 3/8	15	22	3	3/4	G	R-1910-D
R-2525-C	15 3/4	1 3/8	14 3/4	21	4 3/4	3/4	G	R-1910-C
R-2498-A	15 3/4	1 3/8	14 3/4	21	4 3/4	3/4	G	R-2525-C
R-2525-D	15 3/4	1 3/8	14 11/16	23	4 11/16	3/4	G	R-1910-B
R-2498	15 3/4	1 3/8	14 11/16	23	4 11/16	3/4	G	R-2525-D
R-2569	16 x 16	1/2	14 x 14	27	5	1/2	Q	n/a
R-2586-B	16	1	13 1/2	18 1/4	1 5/8	1 1/8	G	n/a
R-2586-A	14 1/4	3/4	13	16	1 1/2	7/8	E	n/a
R-2499	12	1	11	19	4	1	G	R-2525-A
R-2525-A	12	1	11	19	4	1	G	R-1791-A
R-2560-A	12	1	11	19	4	-	Beehive	R-1791-A

■ Note: When specifying/ordering grates, refer to "Choosing the proper inlet grate" on pages 117-118.
 For a complete listing of FREE OPEN AREAS and WEIR PERIMETERS of all NEENAH grates, refer to pages 306-311.

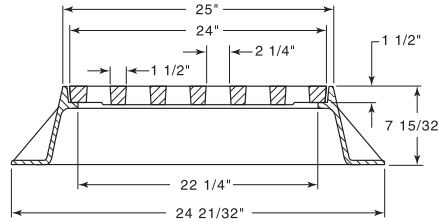
R-2500
Inlet Frame, Grate

Heavy Duty

CATALOG NUMBER	GRATE TYPE	SQ. FT. OPEN	WEIR PERIMETER LINEAL FEET
R-2500	H	0.9	6.2

Non-Rocking feature available, see page 12.

Available Lid: **R-1670-A**



INLET FRAMES & GRATES 2

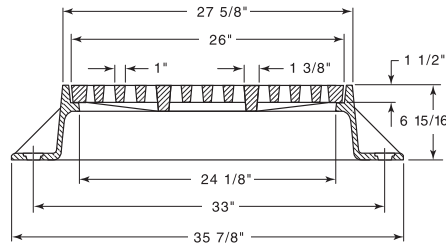
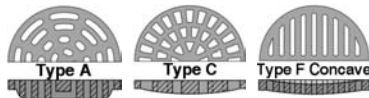
R-2501
Inlet Frame, Grate

Heavy Duty

CATALOG NUMBER	GRATE TYPE	SQ. FT. OPEN	WEIR PERIMETER LINEAL FEET
R-2501	G	1.1	6.8
R-2501	A	1.1	6.8
R-2501	C	1.2	6.8
R-2501	F	1.4	6.8

Furnished with four 1" anchor holes on 33" diameter bolt circle.

Standard Grate (shown): Type G
 Alternate Grate(s):



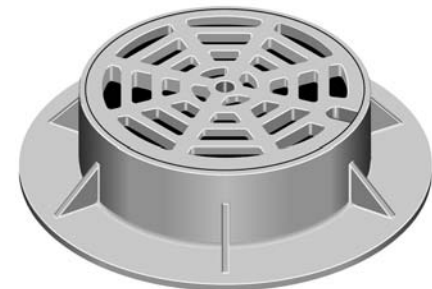
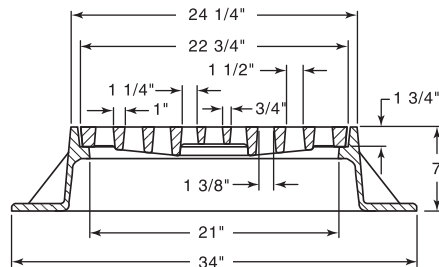
Available Lid: **R-1642**

R-2502
Inlet Frame, Grate

Heavy Duty

CATALOG NUMBER	GRATE TYPE	SQ. FT. OPEN	WEIR PERIMETER LINEAL FEET
R-2502	D	0.9	6.0
R-2502	G	1.3	6.0
R-2502	C	1.2	6.0
R-2502	E	1.5	6.0

Standard Grate (shown): Type D
 Alternate Grate(s):



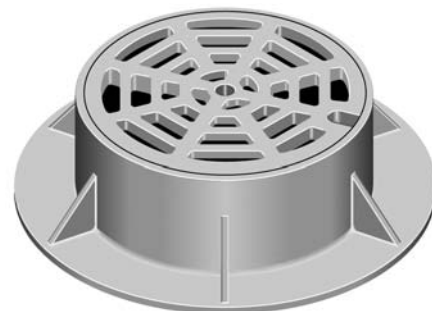
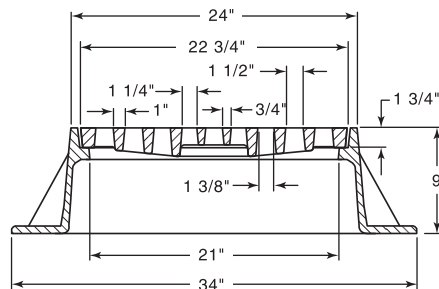
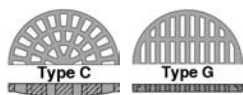
Available Lid: **R-1772**

R-2504
Inlet Frame, Grate

Heavy Duty

CATALOG NUMBER	GRATE TYPE	SQ. FT. OPEN	WEIR PERIMETER LINEAL FEET
R-2504	G	1.3	6.0
R-2504	D	0.9	6.0
R-2504	C	1.2	6.0

Standard Grate (shown): Type D
 Alternate Grate(s):



Available Lid: **R-1713**

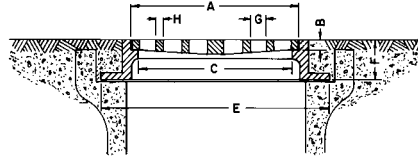
■ Note: When specifying/ordering grates, refer to "Choosing the proper inlet grate" on pages 117-118.
For a complete listing of FREE OPEN AREAS and WEIR PERIMETERS of all NEENAH grates, refer to pages 306-311.

R-2510 Series Pipe Bell Frame, Grate

Light Duty

CATALOG NUMBER	GRATE TYPE	SQ. FT. OPEN	WEIR PERIMETER LINEAL FEET
R-2510	C	1.3	5.8
R-2510-1	G	0.4	4.1
R-2510-2	G	1.6	7.2

Bell and spigot vitrified clay and concrete pipe are made under many specifications and dimensions vary. Check the sizes in the table to be sure they will fit the pipe you are using.



Illustrating R-2510 with Type C Grate



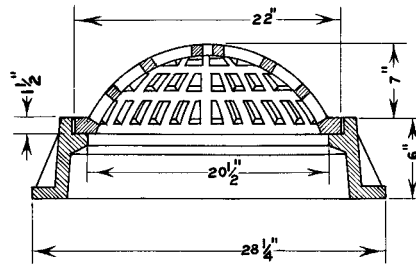
Dimensions in inches

Catalog No.	A	B	C	E	F	G	H	Pipe Size	Grate Type	Frame/Lid
R-2510	22	1 1/2	20 15/32	27 9/16	3 15/16	2 1/4	3/4	24	C	R-1690
R-2510-1	15 3/4	1 3/8	15	22	3	3/4	1	18	G	R-1910-D
R-2510-2	27 1/2	1	25 3/4	34 1/2	4	7/8	3/4	30	G	R-1773

R-2510-A Inlet Frame, Beehive Grate

CATALOG NUMBER	GRATE TYPE	SQ. FT. OPEN	WEIR PERIMETER LINEAL FEET
R-2510-A	Beehive	1.1	5.8

For additional beehive grates, see the R-2560 Series.

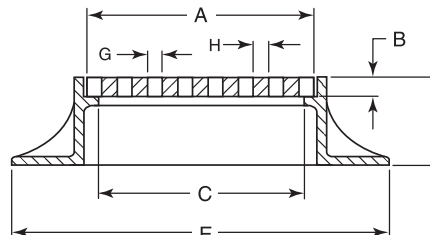


Available Lid: R-1761

R-2525 Series Inlet Frame, Grate

Light Duty

CATALOG NUMBER	GRATE TYPE	SQ. FT. OPEN	WEIR PERIMETER LINEAL FEET
R-2525-A	E	0.2	3.1
R-2525-C	G	0.4	4.1
R-2525-D	G	0.4	4.1
R-2525-E	E	0.6	4.7
R-2525-F	G	0.8	5.4
R-2525-G	G	0.8	5.1



Illustrating R-2525-A

Dimensions in inches

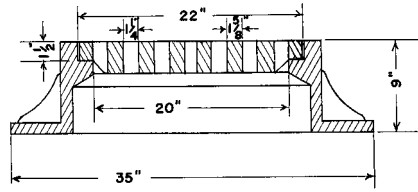
Catalog No.	A	B	C	E	F	G	H	Frame/Lid
R-2525-A	12	1	11	19	4	1	1	R-1791-A
R-2525-C	15 3/4	1 3/8	14 3/4	21	4 3/4	3/4	1	R-1910-C
R-2525-D	15 3/4	1 3/8	15	23	4 3/4	3/4	1	R-1910-B
R-2525-E	18	1	17	25	4 1/2	1 1/8	1 1/4	R-1791-E
R-2525-F	20 1/2	5/8	18	30	5	1	7/8	R-1791-F
R-2525-G	19 1/2	1 1/2	18	29	5 1/2	3/4	3/4	R-1791-G

■ Note: When specifying/ordering grates, refer to "Choosing the proper inlet grate" on pages 117-118.
 For a complete listing of FREE OPEN AREAS and WEIR PERIMETERS of all NEENAH grates, refer to pages 306-311.

R-2533
Inlet Frame, Grate

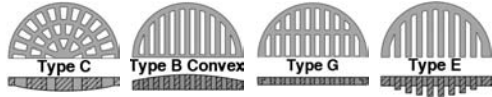
Heavy Duty

CATALOG NUMBER	GRATE TYPE	SQ. FT. OPEN	WEIR PERIMETER LINEAL FEET
R-2533	A	1.1	5.8
R-2533	C	1.0	5.8
R-2533	B	1.2	5.8



Non-Rocking feature available, see page 10.

Standard Grate (shown): Type A
 Alternate Grate(s):

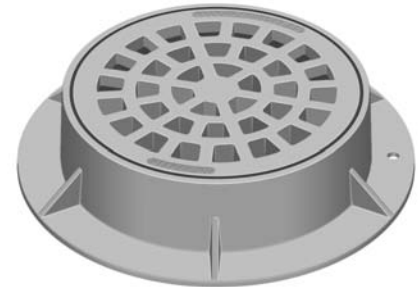
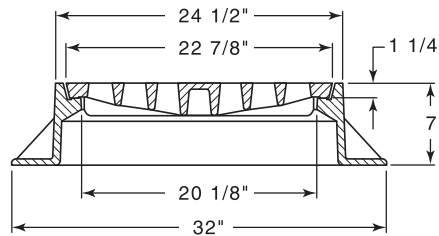


Available Lid: R-1710

R-2534
Inlet Frame, Grate

Heavy Duty

CATALOG NUMBER	GRATE TYPE	SQ. FT. OPEN	WEIR PERIMETER LINEAL FEET
R-2534	C	0.9	6.0

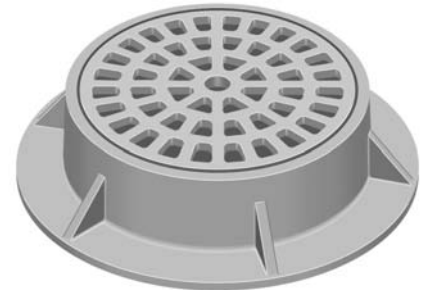
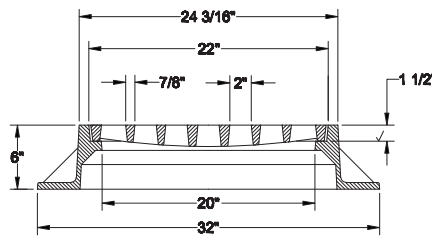


Available Lid: R-1570-A

R-2535
Inlet Frame, Grate

Heavy Duty

CATALOG NUMBER	GRATE TYPE	SQ. FT. OPEN	WEIR PERIMETER LINEAL FEET
R-2535	C	1.1	5.8
R-2535-A	C	1.1	5.8



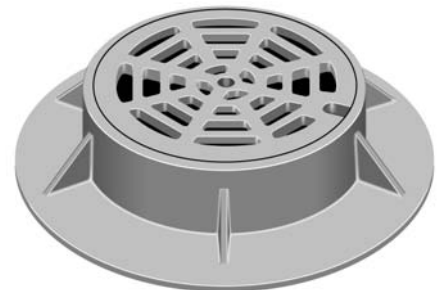
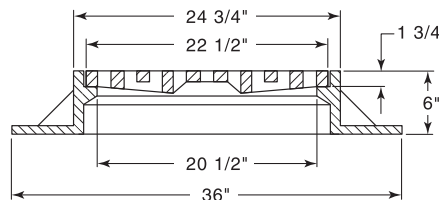
Available with 4" high frame, order as R-2535-A.
 Also available w/38" dia. frame flange.

Available Lid: R-1510-A

R-2540
Inlet Frame, Grate

Heavy Duty

CATALOG NUMBER	GRATE TYPE	SQ. FT. OPEN	WEIR PERIMETER LINEAL FEET
R-2540	D	1.1	5.9
R-2540-A	D	1.1	5.9



Available with 38" diameter frame, order as R-2540-A.

Available Lid: R-1580

INLET FRAMES & GRATES 2

■ Note: When specifying/ordering grates, refer to "Choosing the proper inlet grate" on pages 117-118.
 For a complete listing of FREE OPEN AREAS and WEIR PERIMETERS of all NEENAH grates, refer to pages 306-311.

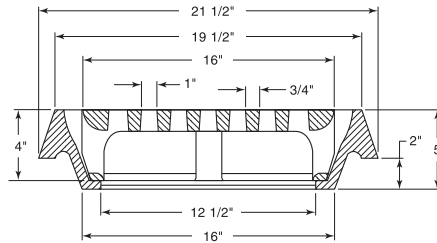
R-2545
Special Drain, Grate

Light Duty

CATALOG NUMBER	GRATE TYPE	SQ. FT. OPEN	WEIR PERIMETER LINEAL FEET
R-2545	K	0.4	4.7

Storm drain for 18" tile pipe. Fits bell or spigot end.

Grate is removable. Opening in outer diameter permits leaves and debris to wash through, eliminating clogging.



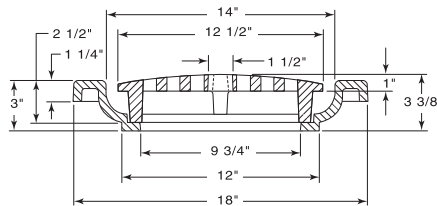
R-2546
Special Drain, Grate

Light Duty

CATALOG NUMBER	GRATE TYPE	SQ. FT. OPEN	WEIR PERIMETER LINEAL FEET
R-2546	K	0.4	3.5

Storm drain for 15" tongue and groove reinforced concrete pipe. Fits bell or spigot end.

Grate is removable. Opening in outer diameter permits leaves and debris to wash through, eliminating clogging.

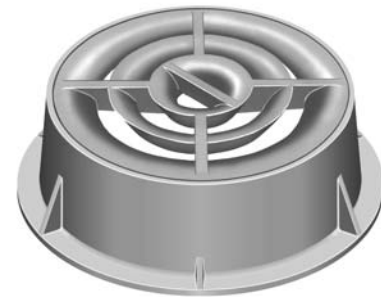
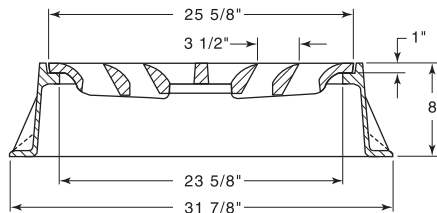


R-2548
Inlet Frame, Vane Grate

Heavy Duty

CATALOG NUMBER	GRATE TYPE	SQ. FT. OPEN	WEIR PERIMETER LINEAL FEET
R-2548	V	0.8	6.7

Available Lid: R-1728



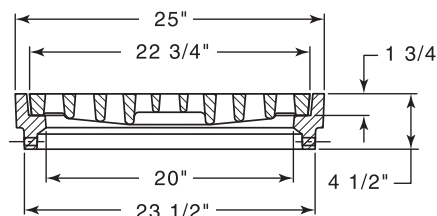
R-2549
Inlet Frame, Grate

Heavy Duty

CATALOG NUMBER	GRATE TYPE	SQ. FT. OPEN	WEIR PERIMETER LINEAL FEET
R-2549	D	0.9	6.0

Four 5/8" holes in side for bolting to corrugated pipe. Furnished only when specified. Fits inside 24" corrugated metal pipe.

Available Lid: R-1645



■ Note: When specifying/ordering grates, refer to "Choosing the proper inlet grate" on pages 117-118.
 For a complete listing of FREE OPEN AREAS and WEIR PERIMETERS of all NEENAH grates, refer to pages 306-311.

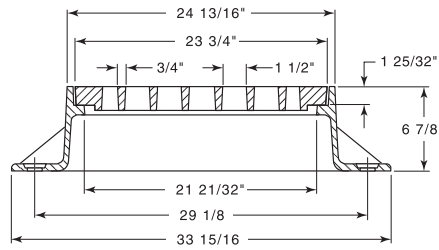
R-2552
Inlet Frame, Grate

Heavy Duty

CATALOG NUMBER	GRATE TYPE	SQ. FT. OPEN	WEIR PERIMETER LINEAL FEET
R-2552	K	0.8	6.2

Furnished with four 1" anchor holes on 29-1/8" diameter bolt circle.

Available Lid: R-1714



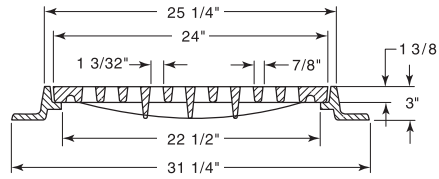
INLET FRAMES & GRATES 2

R-2553
Inlet Frame, Grate

Heavy Duty

CATALOG NUMBER	GRATE TYPE	SQ. FT. OPEN	WEIR PERIMETER LINEAL FEET
R-2553	G	1.1	6.3

Available Lid: R-1553

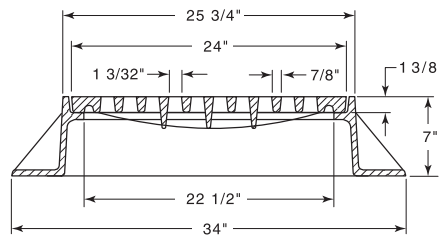


R-2554
Inlet Frame, Grate

Heavy Duty

CATALOG NUMBER	GRATE TYPE	SQ. FT. OPEN	WEIR PERIMETER LINEAL FEET
R-2554	G	1.1	6.3

Available Lid: R-1554

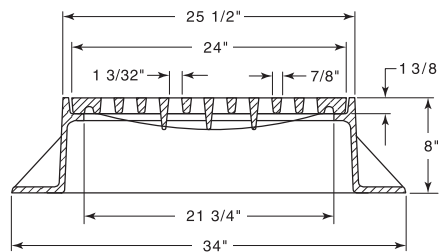


R-2555
Inlet Frame, Grate

Heavy Duty

CATALOG NUMBER	GRATE TYPE	SQ. FT. OPEN	WEIR PERIMETER LINEAL FEET
R-2555	G	1.1	6.3

Available Lid: R-1555



■ Note: When specifying/ordering grates, refer to "Choosing the proper inlet grate" on pages 117-118.
 For a complete listing of FREE OPEN AREAS and WEIR PERIMETERS of all NEENAH grates, refer to pages 306-311.

R-2556
Inlet Frame, Grate

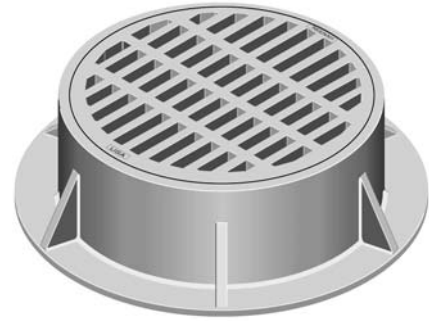
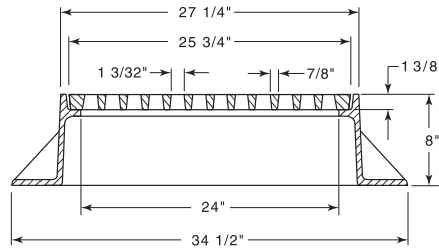
Heavy Duty

CATALOG NUMBER	GRATE TYPE	SQ. FT. OPEN	WEIR PERIMETER LINEAL FEET
R-2556	G	1.5	6.7
R-2556	F	1.4	6.7

Standard Grate (shown): Type G
 Alternate Grate(s):



Available Lid: R-1556

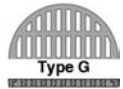


R-2556-A
Inlet Frame, Concave Grate

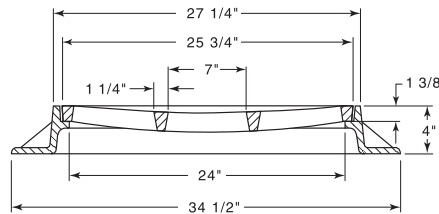
Heavy Duty

CATALOG NUMBER	GRATE TYPE	SQ. FT. OPEN	WEIR PERIMETER LINEAL FEET
R-2556-A	F	1.4	6.7
R-2556-A	G	1.5	6.7

Standard Grate (shown): Type F
 Alternate Grate(s):



Available Lid: R-1556-A

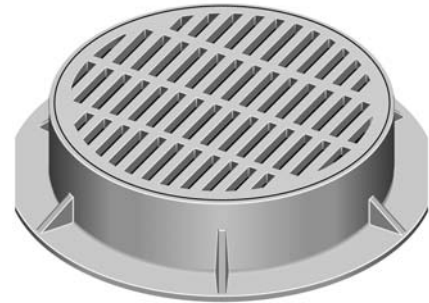
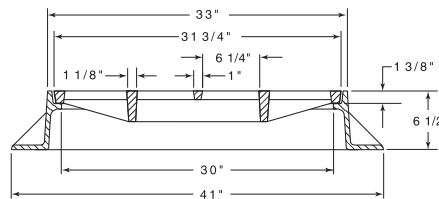


R-2557
Inlet Frame, Grate

Heavy Duty

CATALOG NUMBER	GRATE TYPE	SQ. FT. OPEN	WEIR PERIMETER LINEAL FEET
R-2557	G	2.0	8.4

Available Lid: R-1557

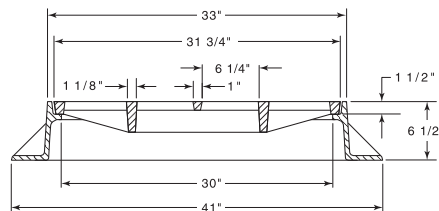


R-2557-A
Inlet Frame, Grate

Heavy Duty

CATALOG NUMBER	GRATE TYPE	SQ. FT. OPEN	WEIR PERIMETER LINEAL FEET
R-2557-A	G	2.0	8.4

Available Lid: R-1557-A



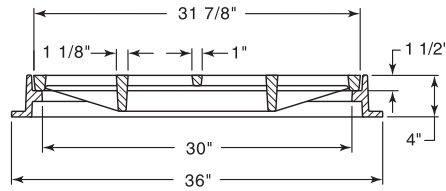
■ Note: When specifying/ordering grates, refer to “Choosing the proper inlet grate” on pages 117-118.
 For a complete listing of FREE OPEN AREAS and WEIR PERIMETERS of all NEENAH grates, refer to pages 306-311.

R-2557-A4
Inlet Frame, Grate

Heavy Duty

CATALOG NUMBER	GRATE TYPE	SQ. FT. OPEN	WEIR PERIMETER LINEAL FEET
R-2557-A4	G	2.0	8.4

Available Lid: R-1557-A4



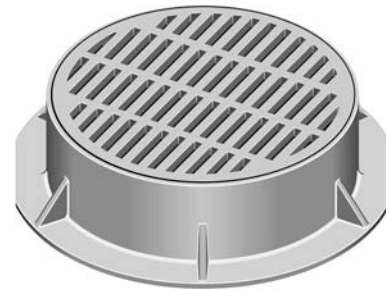
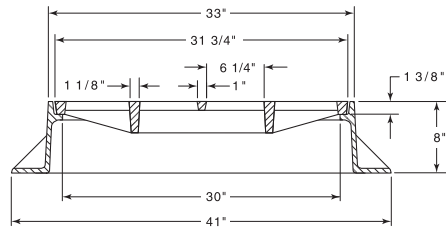
INLET FRAMES & GRATES 2

R-2558
Inlet Frame, Grate

Heavy Duty

CATALOG NUMBER	GRATE TYPE	SQ. FT. OPEN	WEIR PERIMETER LINEAL FEET
R-2558	G	2.0	8.4

Available Lid: R-1558

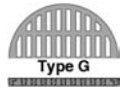


R-2559
Inlet Frame, Concave Grate

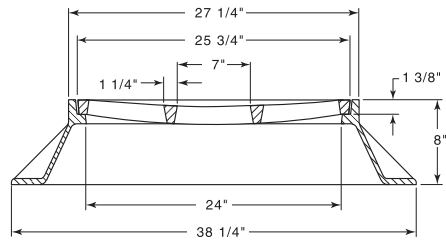
Heavy Duty

CATALOG NUMBER	GRATE TYPE	SQ. FT. OPEN	WEIR PERIMETER LINEAL FEET
R-2559	F	1.4	6.7
R-2559	G	1.4	6.7

Standard Grate (shown): Type F Concave
 Alternate Grate(s):



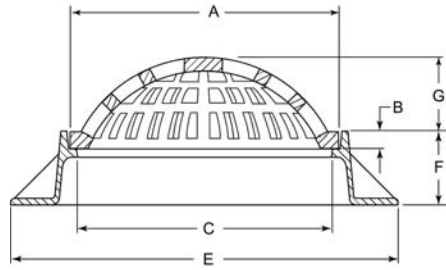
Available Lid: R-1559



■ Note: When specifying/ordering, refer to "Choosing the proper inlet grate" on pages 117-118.
 For a complete listing of FREE OPEN AREAS and WEIR PERIMETERS of all NEENAH grates, refer to pages 306-311.

R-2560 Series
Inlet Frame, Beehive Grate

Suitable for drainage in circumstances where clogging of a flat grating is a problem. Excellent for roadside or earth ditch inlets.



Illustrating R-2560-E

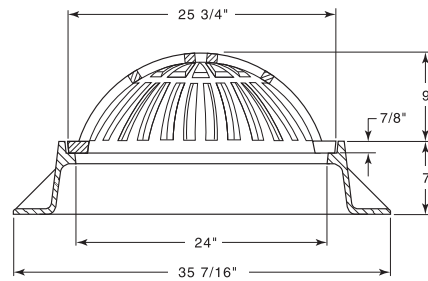
CATALOG NUMBER	GRATE TYPE	SQ. FT. OPEN	WEIR PERIMETER LINEAL FEET
R-2560-A	Beehive	0.3	3.1
R-2560-C	Beehive	0.7	4.7
R-2560-C1	Beehive	0.7	5.8
R-2560-C2	Beehive	0.7	5.8
R-2560-D	Beehive	1.0	5.1
R-2560-D1	Beehive	1.2	5.8
R-2560-D2	Beehive	1.2	5.8
R-2560-D3	Beehive	1.2	5.8
R-2560-D5	Beehive	1.0	5.1
R-2560-D6	Beehive	1.0	5.1
R-2560-D7	Beehive	1.3	5.3
R-2560-D8	Beehive	1.3	5.3
R-2560-E	Beehive	1.2	6.0
R-2560-EA	Beehive	1.2	6.7
R-2560-EB	Beehive	1.8	6.7
R-2560-E1	Beehive	1.4	6.7
R-2560-E2	Beehive	2.0	6.7
R-2560-E5	Beehive	1.2	6.7
R-2560-E6	Beehive	1.8	6.7
R-2560-E7	Beehive	1.2	6.7
R-2560-E8	Beehive	1.8	6.7
R-2560-E9	Beehive	1.2	6.7
R-2560-E10	Beehive	1.8	6.7
R-2560-G	Beehive	1.5	8.4

Dimensions in inches							
Catalog No.	A	B	C	E	F	G	Frame/Lid
R-2560-A	12	1	11	19	4	4	R-1791-A
R-2560-C	18 1/4	1 1/4	16 3/4	30	8	4	R-1900-A
R-2560-C1	22	1 1/2	20 15/32	27 9/16	3 15/16	4 1/2	R-1690
R-2560-C2	22	1 1/2	20 1/2	28 1/4	6	4 1/2	R-1761
R-2560-D	22	1 1/2	20	35	9	4 1/2	R-1710
R-2560-D1	22	1 1/2	20 15/32	27 9/16	3 15/16	7	R-1690
R-2560-D2	22	1 1/2	20 1/2	28 1/4	6	7	R-1761
R-2560-D3	22	1 1/2	20	35	9	7	R-1710
R-2560-D5	22 3/4	1 1/2	21 1/4	34	4	4 1/2	R-1647-A
R-2560-D6	22 3/4	1 1/2	21	34	9	4 1/2	R-1713
R-2560-D7	22 3/4	1 1/2	21 1/4	34	4	7	R-1647-A
R-2560-D8	22 3/4	1 1/2	21	34	9	7	R-1713
R-2560-E	23	1 1/2	21 1/16	35 7/16	8 7/8	7	R-1550-A
R-2560-E1	25 3/4	7/8	24	35 7/16	7	6	R-1733
R-2560-E2	25 3/4	7/8	24	35 7/16	7	9	R-1733
R-2560-E5	25 3/4	7/8	24 1/8	35 1/2	8	6	R-1733-A
R-2560-E6	25 3/4	7/8	24 1/8	35 1/2	8	9	R-1733-A
R-2560-E7	25 3/4	7/8	24 1/8	35 1/2	9	6	R-1733-B
R-2560-E8	25 3/4	7/8	24 1/8	35 1/2	9	9	R-1733-B
R-2560-E9	25 3/4	7/8	24 1/8	35 1/2	10	6	R-1733-C
R-2560-E10	25 3/4	7/8	24 1/8	35 1/2	10	9	R-1733-C
R-2560-EA	25 3/4	7/8	24 1/8	35 7/16	4	6	R-1733-1
R-2560-EB	25 3/4	7/8	24 1/8	35 7/16	4	9	R-1733-1
R-2560-G	32	1 1/2	30	46	7	4	R-1740-B

R-2561
Inlet Frame, Beehive Grate

CATALOG NUMBER	GRATE TYPE	SQ. FT. OPEN	WEIR PERIMETER LINEAL FEET
R-2561	Beehive	2.0	6.7

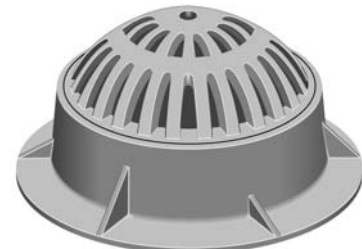
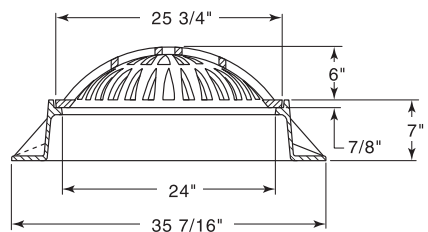
Available Lid: R-1733



R-2561-A
Inlet Frame, Beehive Grate

CATALOG NUMBER	GRATE TYPE	SQ. FT. OPEN	WEIR PERIMETER LINEAL FEET
R-2561-A	Beehive	1.2	6.7

Available Lid: R-1733

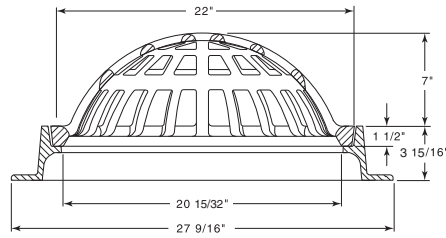


■ Note: When specifying/ordering grates, refer to “Choosing the proper inlet grate” on pages 117-118.
 For a complete listing of FREE OPEN AREAS and WEIR PERIMETERS of all NEENAH grates, refer to pages 306-311.

R-2563
Inlet Frame, Beehive Grate

CATALOG NUMBER	GRATE TYPE	SQ. FT. OPEN	WEIR PERIMETER LINEAL FEET
R-2563	Beehive	1.2	5.8

Available Lid: R-1690

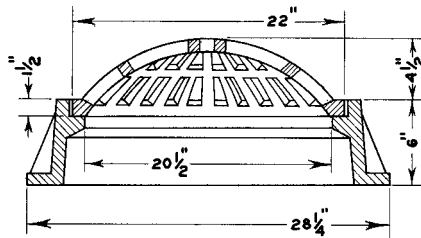


INLET FRAMES & GRATES 2

R-2564
Inlet Frame, Beehive Grate

CATALOG NUMBER	GRATE TYPE	SQ. FT. OPEN	WEIR PERIMETER LINEAL FEET
R-2564	Beehive	1.0	5.8

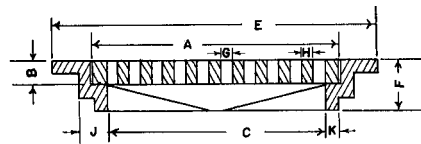
Available Lid: R-1761



R-2565 Series
Inlet Frame, Grate

Heavy Duty

CATALOG NUMBER	GRATE TYPE	SQ. FT. OPEN	WEIR PERIMETER LINEAL FEET
R-2565-A	G	0.8	5.5
R-2565-C	G	1.2	6.0
R-2565-E	G	1.8	7.1
R-2565-F	G	1.8	7.1
R-2565-G	G	1.6	7.1
R-2565-H	G	1.9	7.6
R-2565-J	G	2.4	8.5



For Frame/Lid alternatives, see the R-6052 Series.

Catalog No.	Dimensions in inches									
	A	B	C	E	F	G	H	J	K	Frame/Lid
R-2565-A	21	2 1/2	18	27 1/2	5	1 3/8	1	2 7/8	1	R-6052-A
R-2565-C	23	1 1/4	20	29 3/4	4	1 3/8	1	2 1/2	1	R-6052-C
R-2565-E	27	1 1/4	23 1/2	33 1/2	4	1 1/2	1	2 1/4	3/4	R-6052-D
R-2565-F	27	2 1/2	24	33 1/2	5	1 1/2	1	2 7/8	1	R-6052-G
R-2565-G	27	2 1/2	24	33 1/2	5	1 1/2	1	2 7/8	1	R-6052-G
R-2565-H	29	1 3/4	27	35	6	1	1	2 7/8	1	R-6052-H
R-2565-J	32 3/8	2	30	39 1/2	6	1 1/2	1	2 7/8	1	R-6052-J

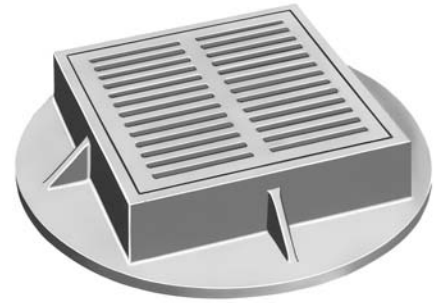
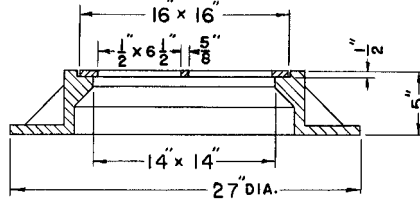
■ Note: When specifying/ordering grates, refer to "Choosing the proper inlet grate" on pages 117-118.
 For a complete listing of FREE OPEN AREAS and WEIR PERIMETERS of all NEENAH grates, refer to pages 306-311.

R-2569
Inlet Frame, Grate

Light Duty

CATALOG NUMBER	GRATE TYPE	SQ. FT. OPEN	WEIR PERIMETER LINEAL FEET
R-2569	Q	0.6	5.3

Type Q grate with small 1/2" wide openings.
 Especially suited for use in walkways, park shelter buildings and commercial basement drains.

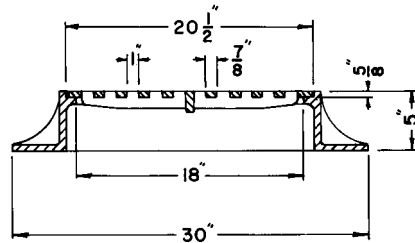


R-2570
Inlet Frame, Grate

Light Duty

CATALOG NUMBER	GRATE TYPE	SQ. FT. OPEN	WEIR PERIMETER LINEAL FEET
R-2570	G	0.8	5.4

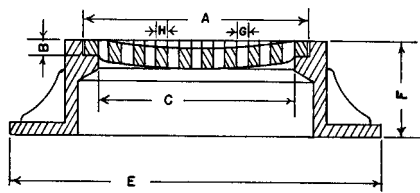
Available Lid: R-1791-F



R-2571 Series
Inlet Frame, Concave Grate

Heavy Duty

CATALOG NUMBER	GRATE TYPE	SQ. FT. OPEN	WEIR PERIMETER LINEAL FEET
R-2571-A	F	0.9	5.8
R-2571-B	F	1.1	5.8
R-2571-C	F	0.9	5.8
R-2571-D	F	0.7	6.0
R-2571-E	F	1.2	6.8



Illustrating R-2571-C

Catalog No.	Dimensions in inches								Conc.	Frame/Lid
	A	B	C	E	F	G	H			
R-2571-A	22	1 1/2	20 15/32	27 9/16	3 15/16	1 3/8	1	5/8	R-1690	
R-2571-B	22	1 1/2	20	32	6	1 3/8	1	5/8	R-1510-A	
R-2571-C	22	1 1/2	20	35	9	1 3/8	1	5/8	R-1710	
R-2571-D	23	1 1/2	21 1/16	35 7/16	8 7/8	1 3/8	1	5/8	R-1550-A	
R-2571-E	26	1 1/2	24 1/8	35 7/8	6 15/16	1 1/8	1	5/8	R-1642	

■ Note: When specifying/ordering grates, refer to "Choosing the proper inlet grate" on pages 117-118.
 For a complete listing of FREE OPEN AREAS and WEIR PERIMETERS of all NEENAH grates, refer to pages 306-311.

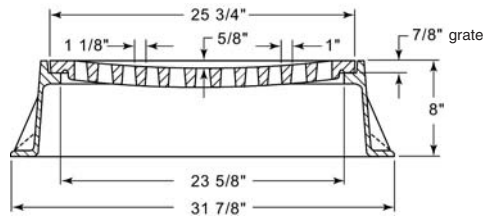
R-2572
Inlet Frame, Concave Grate

Heavy Duty

CATALOG NUMBER	GRATE TYPE	SQ. FT. OPEN	WEIR PERIMETER LINEAL FEET
R-2572	F	1.3	6.7

Frame 1"

Available Lid: R-1728



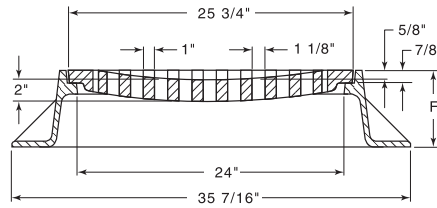
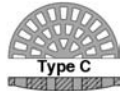
INLET FRAMES & GRATES 2

R-2573 Series
Inlet Frame, Concave Grate

Heavy Duty

CATALOG NUMBER	GRATE TYPE	SQ. FT. OPEN	WEIR PERIMETER LINEAL FEET
R-2573-Series F	F	1.3	6.7
R-2573-Series C	C	1.6	6.7

Alternate Grate(s):



Illustrating R-2573-B w/Type F Concave Grate

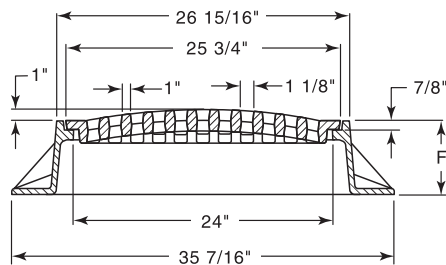
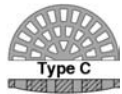
Catalog No.	F	Frame/Lid
R-2573	7	R-1733
R-2573-1	4	R-1733-1
R-2573-A	8	R-1733-A
R-2573-B	9	R-1733-B
R-2573-C	10	R-1733-C

R-2577 Series
Inlet Frame, Convex Grate

Heavy Duty

CATALOG NUMBER	GRATE TYPE	SQ. FT. OPEN	WEIR PERIMETER LINEAL FEET
R-2577-Series B	B	1.0	6.7
R-2577-Series C	C	1.6	6.7

Alternate Grate(s):



Illustrating R-2577-B w/Type B Convex Grate

Catalog No.	F	Frame/Lid
R-2577	7	R-1733
R-2577-1	4	R-1733-1
R-2577-A	8	R-1733-A
R-2577-B	9	R-1733-B
R-2577-C	10	R-1733-C

■ Note: When specifying/ordering grates, refer to "Choosing the proper inlet grate" on pages 117-118.
For a complete listing of FREE OPEN AREAS and WEIR PERIMETERS of all NEENAH grates, refer to pages 306-311.

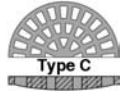
R-2578
Inlet Frame, Convex Grate

Heavy Duty

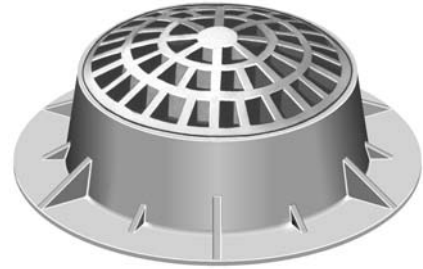
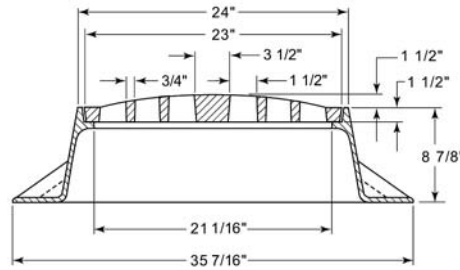
CATALOG NUMBER	GRATE TYPE	SQ. FT. OPEN	WEIR PERIMETER LINEAL FEET
R-2578	C	1.0	6.0

Standard Grate (shown): Type C Convex

Alternate Grate(s):



Available Lid: R-1550-A

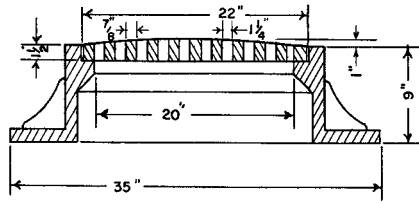


R-2579
Inlet Frame, Convex Grate

Heavy Duty

CATALOG NUMBER	GRATE TYPE	SQ. FT. OPEN	WEIR PERIMETER LINEAL FEET
R-2579	B	1.3	5.8

Available Lid: R-1710

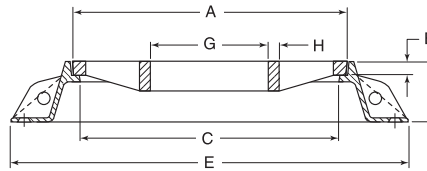


R-2580 Series
Inlet Frame, Grate

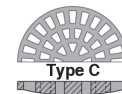
Heavy Duty

CATALOG NUMBER	GRATE TYPE	SQ. FT. OPEN	WEIR PERIMETER LINEAL FEET
R-2580-A1	C	1.1	8.4
R-2580-A	G	1.9	8.4
R-2580-C	G	3.0	9.9

Square flange available, see R-1795 Series.



Illustrating R-2580-A w/Type G grate

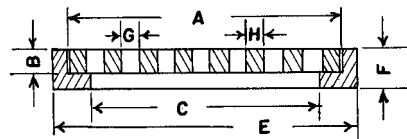


Dimensions in inches

Catalog No.	A	B	C	E	F	G	H	Type	Frame/Lid
R-2580-A	31 7/8	1 1/2	30	46	7	1 x 6 1/4	1	G	R-1740-B
R-2580-A1	32	1 1/2	30	46	7	-	1	C	R-1740-B
R-2580-C	38	1 1/2	36	49	10	1 x 6	1	G	R-1740-D

R-2586 Series
Angle Frame, Grate

CATALOG NUMBER	GRATE TYPE	SQ. FT. OPEN	WEIR PERIMETER LINEAL FEET
R-2586-A	E	0.4	3.8
R-2586-B	G	0.5	4.2
R-2586-C	E	0.6	4.7
R-2586-D	G	0.8	5.2
R-2586-E	G	0.8	5.1
R-2586-F	G	0.8	5.4
R-2586-G	G	1.0	5.8
R-2586-H	E	1.3	6.0
R-2586-K	G	1.3	6.3
R-2586-M	G	1.8	7.0
R-2586-N	G	1.7	7.9
R-2586-O	G	1.9	8.4



Illustrating R-2586-A w/Type E Grate

Dimensions in inches

Catalog No.	A	B	C	E	F	G	H	Type	Duty
R-2586-A	14 1/4	3/4	13	16	1 1/2	3/4	1	E	Light
R-2586-B *	16	1	13 1/2	18 1/4	1 5/8	1 1/8	1	G	Heavy
R-2586-C **	18	3/4	16	19 1/4	1 1/4	7/8	3/4	E	Light
R-2586-D * **	19 3/4	1	17 1/2	21 3/4	1 5/8	1	3/4	G	Light
R-2586-E **	19 1/2	1 1/2	18	21 1/4	2	3/4	3/4	G	Light
R-2586-F *	20 1/2	3/4	18 3/4	23	1 1/4	1	1	G	Light
R-2586-G **	22 1/4	1 1/2	20 3/8	24 3/8	2 1/4	1 1/4	1	G	Heavy
R-2586-H *	22 3/4	1 3/4	20 1/2	25 1/2	3	1 1/2	1	E	Heavy
R-2586-K	24	3/4	21 3/4	26	1 1/4	1/2	1/2	G	Light
R-2586-M	26 5/8	3/4	24	28 1/4	1 3/8	7/8	11/16	G	Light
R-2586-N	30	1	27 1/2	33	1 3/4	1 1/4	1	G	Light
R-2586-O	32	1	30	34	2 1/4	1 1/4	1	G	Light

* Furnished standard with machined horizontal bearing surfaces. All others have as-cast surfaces.

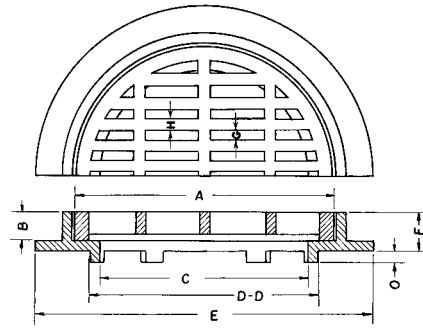
** Cast integral frame anchors available if specified.

■ Note: When specifying/ordering grates, refer to "Choosing the proper inlet grate" on pages 117-118.
 For a complete listing of FREE OPEN AREAS and WEIR PERIMETERS of all NEENAH grates, refer to pages 306-311.

**R-2588 Series
 Inlet Frame, Grate**

Heavy Duty

CATALOG NUMBER	GRATE TYPE	SQ. FT. OPEN	WEIR PERIMETER LINEAL FEET
R-2588-A	G	1.1	5.8
R-2588-B	G	1.0	6.5
R-2588-C	G	1.9	7.6



Illustrating R-2588-C

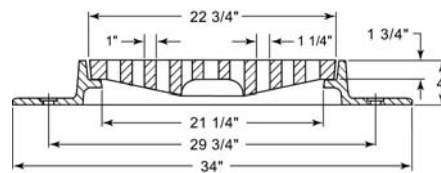
Catalog No.	Dimensions in inches										Pipe Size
	A	B	C	D-D	E	F	G	H	O		
R-2588-A *	21 15/16	1 1/2	20	21 1/8	26	2 1/4	1 9/16	1	3/4		18
R-2588-B	25	1 1/2	23 1/2	25	30	2 1/4	7/8	1 1/2	1 1/4		21
R-2588-C	29	3	24	25 1/4	37	3 1/2	3/4	1	1 1/4		24

* With continuous anchor ring in place of bottom lugs as illustrated.

**R-2595-A
 Inlet Frame, Grate**

Heavy Duty

CATALOG NUMBER	GRATE TYPE	SQ. FT. OPEN	WEIR PERIMETER LINEAL FEET
R-2595-A	D	1.2	6.0



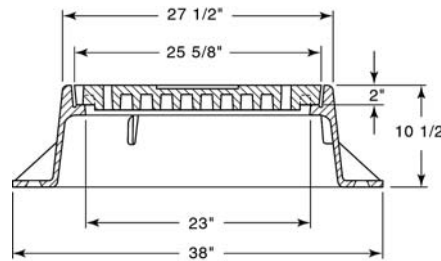
Furnished with six 3/4" anchor holes on 29-3/4" diameter bolt circle.

Available Lid: R-1647-A

**R-2650
 Inlet Frame, Grate**

Heavy Duty

CATALOG NUMBER	GRATE TYPE	SQ. FT. OPEN	WEIR PERIMETER LINEAL FEET
R-2650	G	1.1	6.7



Furnished with four 1" anchor holes on 35-1/2" diameter bolt circle.

INLET FRAMES & GRATES 2

■ Note: When specifying/ordering grates, refer to "Choosing the proper inlet grate" on pages 117-118.
 For a complete listing of FREE OPEN AREAS and WEIR PERIMETERS of all NEENAH grates, refer to pages 306-311.

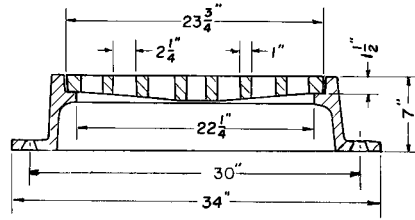
R-2668
Inlet Frame, Grate

Heavy Duty

CATALOG NUMBER	GRATE TYPE	SQ. FT. OPEN	WEIR PERIMETER LINEAL FEET
R-2668	C	0.9	6.2

Furnished with four 3/4" anchor holes on 30" diameter bolt circle.

Available Lid: R-1668



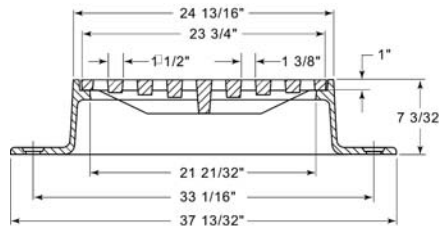
R-2680
Inlet Frame, Grate

Heavy Duty

CATALOG NUMBER	GRATE TYPE	SQ. FT. OPEN	WEIR PERIMETER LINEAL FEET
R-2680	G	1.1	6.2

Furnished with four 1" anchor holes on 33-1/16" diameter bolt circle.

Available Lid: R-1664-A

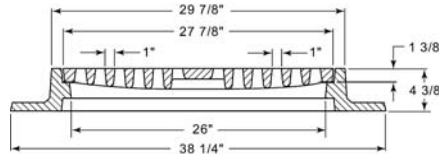


R-2682
Inlet Frame, Grate

Heavy Duty

CATALOG NUMBER	GRATE TYPE	SQ. FT. OPEN	WEIR PERIMETER LINEAL FEET
R-2682	A	1.5	7.3

Available Lid: R-1682



R-2750
Inlet Frame, Grate

Heavy Duty

CATALOG NUMBER	GRATE TYPE	SQ. FT. OPEN	WEIR PERIMETER LINEAL FEET
R-2750	Q	1.8	8.3

Furnished with four 1" anchor holes on 43-1/2" diameter bolt circle.

Available Lid: R-1640-C1S

