

DURO-FLEECE® COLORS 60-MIL MEMBRANE

Advantages:

Duro-Last® Duro-Fleece® Colors 60-Mil (DFC60) membrane is an excellent choice for projects requiring a long lasting roofing membrane. The combination of fleece and the proven performance of Duro-Last roofing membrane results in an ideal product for use in adhered and mechanically attached applications over a wide variety of roof substrates. A complete line of custom prefabricated accessories is available for the DFC60 membrane.

Description:

In addition to the fleece, DFC60 membrane incorporates a weft-inserted, knitted scrim within PVC films to provide exceptional strength and waterproofing.

Duro-Fleece membranes must not be used with Duro-Last EV membranes.

PVC Film - Proprietary thermoplastic PVC formulation of resins, plasticizers, stabilizers, biocides, flame retardants, and U.V. absorbents.

- PVC film above weft-inserted scrim – 31 mil

Weft-Inserted Scrim - An 18 x 9 polyester fabric construction with weft insertion, composed of 840 x 1000 denier threads, provides superior tear and puncture resistance. The polyester thread is treated to prevent wicking.

Fleece - The 3.8-ounce per square yard needle-punched polypropylene fleece provides excellent properties for adhering to, or mechanically attaching over, a variety of substrates. Each roll of membrane has one selvage edge where the fleece is held back 3 inches to provide for hot-air welding to the underlying membrane.

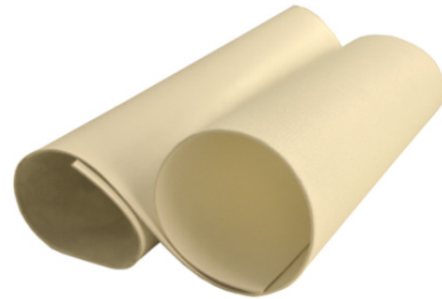
Total Membrane Thickness – 60 mil, nominal.

Overall Thickness (with Fleece) – 78 mil.

Weight – 0.39 lb. per square foot.

Colors – Same top and bottom surface color.

* DFC60 is available in the following colors by special order. Contact sales department for more information.



R-Value – 0.1 ft²·°F·hr/Btu.

Packaging – DFC60 is supplied in the roll sizes shown below. A full pallet contains ten rolls.

Roll Dimensions:

Dimensions	Estimated Coverage	Roll Weight
10 ft. x 80 ft.	780 sq. ft.	312 lb.
5 ft. x 80 ft.	380 sq. ft.	156 lb.

Energy Efficiency:

	Solar Reflectance		Thermal Emittance		Solar Reflective Index (SRI)	
	Initial	3-yr	Initial	3-yr	Initial	3-yr
Blue	0.14	P ¹	0.89	P ¹	11	P ¹
Copper	0.18	P ¹	0.89	P ¹	16	P ¹
Charcoal	0.08	P ¹	0.89	P ¹	3	P ¹
Green	0.07	P ¹	0.89	P ¹	3	P ¹
Light Gray	0.43	P ¹	0.89	P ¹	49	P ¹
Patina	0.31	P ¹	0.89	P ¹	33	P ¹
Light Tan	0.71	P ¹	0.89	P ¹	87	P ¹

P¹ Results pending.

Warranty:

The following warranties are available for projects utilizing DFC60 membrane. Contact Duro-Last for warranty details. **Consequential damage coverage is not available for Duro-Fleece installations.**

Available Warranties		
Supreme	Not applicable for this product	
Ultra	15-YR High Wind	20-YR High Wind
Basic	15-YR NDL	20-YR NDL
Residential	15-YR Material Only	20-YR Material Only

Codes and Standards:

Underwriters Laboratories (US & Canada), FM Approvals, State of Florida, Miami-Dade County, Texas Department of Insurance.

Storage:

Store rolls lengthwise on pallets. Use tarps to keep rolls dry.

Membrane Attachment:

Adhered – DFC60 membrane may be adhered to a variety of roof decks, walls, cover boards and insulations. It may be adhered directly to an existing built-up roof (BUR) by using Duro-Fleece Membrane Adhesive or splatter-applied Duro-Grip® CR-20. Prior written approval from the Duro-Last Engineering Services Department is required prior to adhering to BUR. Refer to the Adhered Duro-Fleece Roofing System Specification for substrate preparation, acceptable adhesives and system requirements.

Mechanically Fastened – DFC60 membrane may be mechanically attached to a variety of roof deck and wall materials. An appropriate slip sheet or cover board may be required. Refer to the Roll Good Mechanically Fastened Systems Specification for system requirements.

Physical Properties:

DFC60 membrane has been subjected to the tests required by ASTM 4434 “Standard Specification for Poly (Vinyl Chloride) Sheet Roofing” and has been classified as a Type III, internally reinforced sheet with a fabric backing. The results of each test are listed below.

Physical Property	Test Method	ASTM 4434 Requirement	Result	Typical Value
Overall Thickness	ASTM D751	≥ 0.045 in.	PASS	0.060 in. (60 mil), nominal (With fleece: 78 mil)
Thickness Over Scrim	ASTM D7635	≥ 0.016 in.	PASS	0.031 in. (31 mil)
Breaking Strength ¹	ASTM D751 Grab Method	≥ 200 lbf./in.	PASS	554 x 408 lbf./in.
Elongation ¹	ASTM D751 Grab Method	≥ 15%	PASS	34% x 85%
Seam Strength	ASTM D751 Grab Method	≥ 415 lbf. (75% of Breaking Strength)	PASS	437 lbf.
Tear Strength ¹	ASTM D751 Procedure B	≥ 45 lbf.	PASS	50 x 200 lbf.
Low Temp. Bend	ASTM D2136	Must pass at -40° F	PASS	PASS
Heat Aging	ASTM D3045	Conditioned for 56 days in oven maintained at 176° F	PASS	PASS
Accelerated Weathering	ASTM G154 (formerly G53)	5,000 hours total test time. Irradiance level of 0.68 W/m ² -nm. Cycle: 8 hours at 145° F, 4 hours condensation at 122° F	PASS	PASS
Dimensional Stability ¹	ASTM D1204	Conditioned for 6 hours in oven maintained at 176° F. Allowable change: ≤ 0.5%	PASS	0.10% x 0.00%
Water Absorption	ASTM D570	Immersed in water at 158° F for 168 hours. Allowable weight change: ≤ 3%	PASS	2.3%
Static Puncture	ASTM D5602	≥ 33 lbf.	PASS	≥ 33 lbf.
Dynamic Puncture	ASTM 5635	≥ 14.7 ft-lbf.	PASS	≥ 14.7 ft-lbf.

¹ Typical values are shown for both machine and cross machine directions. The machine direction results are listed first.

