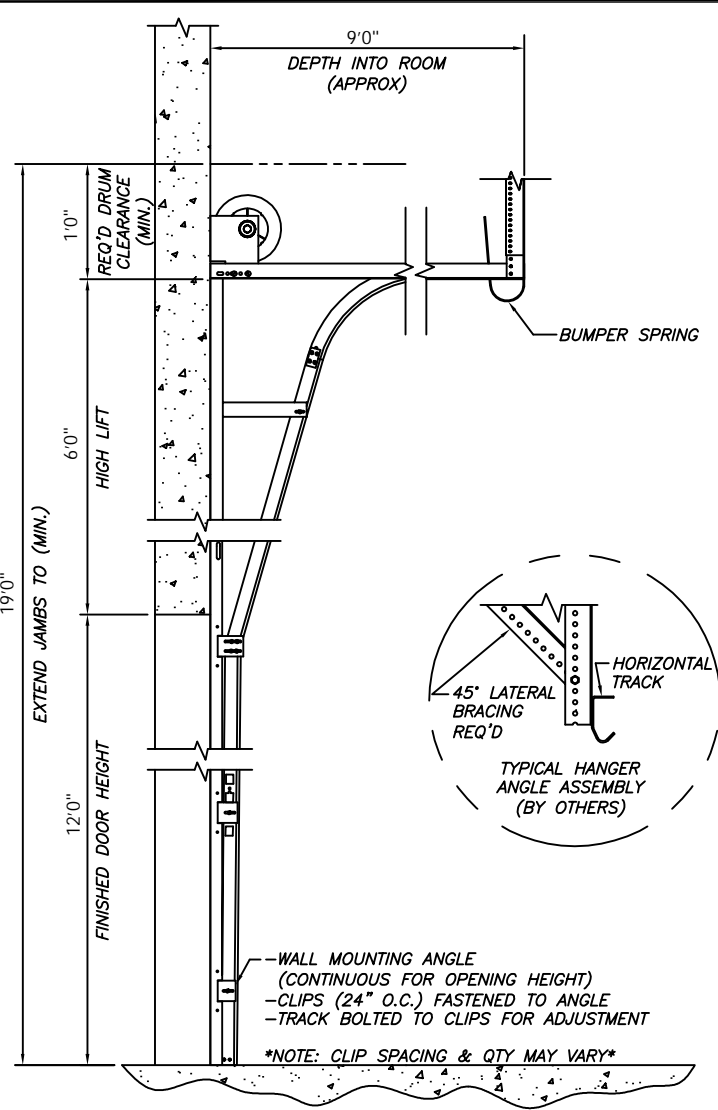
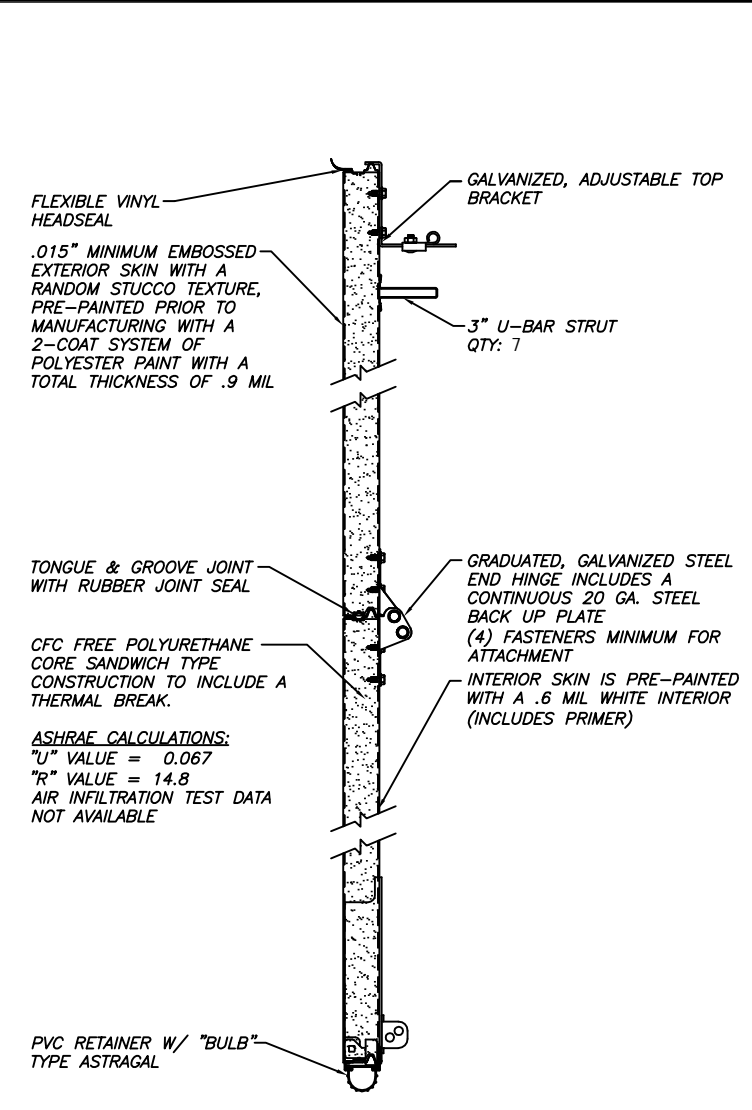


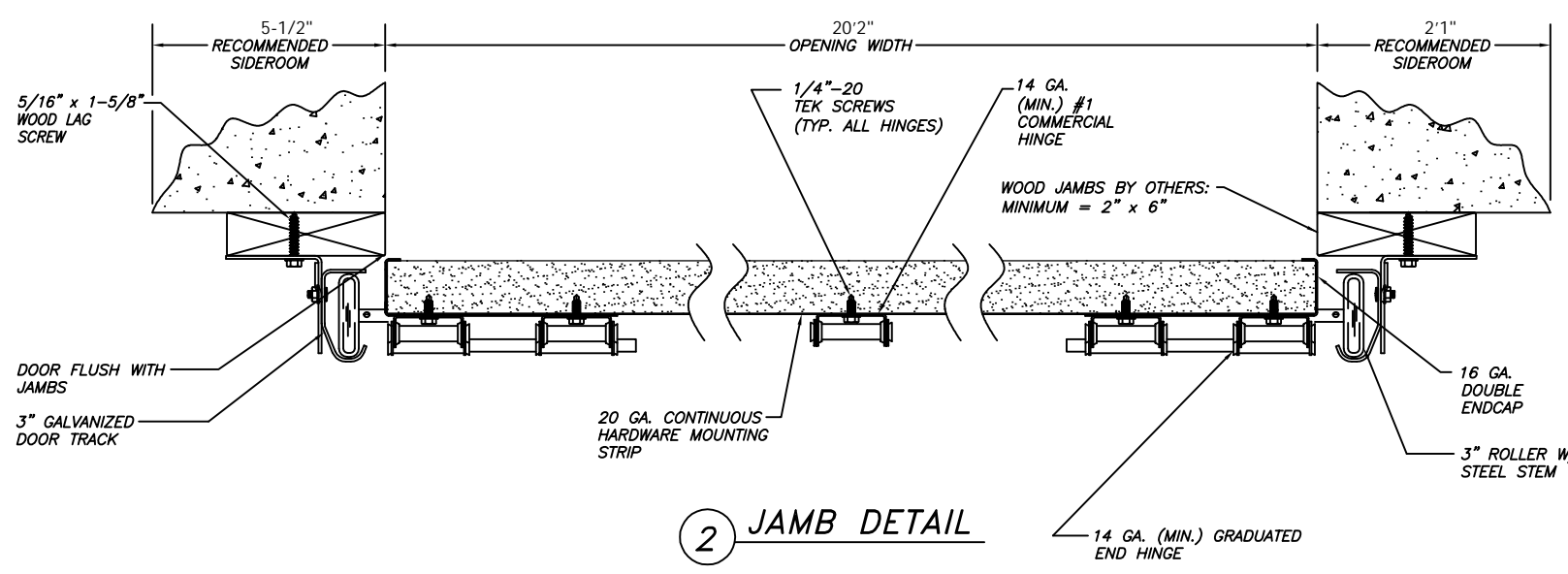
1 INTERIOR ELEVATION



3 HIGH LIFT - BREAKAWAY



4 SECTION CONSTRUCTION



2 JAMB DETAIL

STANDARD COMMERCIAL PRODUCT SUBMITTED BASED ON DESIGN CRITERIA PROVIDED. MINIMUM WIND LOAD AS REQUIRED BY THE AUTHORITY HAVING JURISDICTION OVER THE GEOGRAPHICAL LOCATION OF DOOR(S) INSTALLATION MAY REQUIRE ADDITIONAL DESIGN CONSIDERATION AND/OR CLEARANCES.

THERMOMARK 5255 DOOR SPECIFICATIONS

SECTIONS: CORE MATERIAL IS 2.2 LBS./FT³ DENSITY CFC-11 FREE POLYURETHANE FOAM. SKIN MATERIAL/OUTSIDE IS .015" HOT-DIPPED GALVANIZED STRUCTURAL QUALITY STEEL, EMBOSSED WITH NON-REPEAT RANDOM STUCCO TEXTURE. PRE-PAINTED PRIOR TO MANUFACTURING WITH A TWO-COAT SYSTEM OF POLYESTER PAINT WITH A FINISHED COAT (INCLUDES PRIMER). INSIDE AND OUTSIDE SKINS ARE ROLL-FORMED AND SEPARATED WITH A THERMAL BREAK. HINGE LOCATIONS HAVE 20 GAUGE CONTINUOUS BACK UP PLATES. BOTTOM ASTRAGAL IS A TWO-PIECE "BULB" TYPE ASTRAGAL TO BE ATTACHED TO THE INSIDE SKIN. SECTION ENDS HAVE END CAPS OF 18 GAUGE HOT-DIPPED GALVANIZED STEEL. BETWEEN SECTION JOINT SEAL IS STANDARD. ASHRAE CALCULATIONS: "U" VALUE = 0.067 "R" VALUE = 14.80

TRACK MAT'L: GALVANIZED SIZE: 3" TYPE: ANGLE JAMBS: WOOD	ROLLERS SIZE: 3" TIRE: STEEL BEARING: PRECISION	SPRINGS: TYPE: TORSION MAT'L: OIL-TEMPERED SIZE: 6" QTY: 4 LOCATION: FRONT	TORSION SHAFT: MAT'L: SOLID CRS SIZE: 1"	HINGES/BRACKETS: MAT'L: GALVANIZED GAUGE: 14 (MINIMUM)
DOOR EXTERIOR: WHITE			DRUMS MAT'L: ALUMINUM TYPE: 500-84	CABLE: MAT'L: GALVANIZED TYPE: AIRCRAFT

SPECIAL NOTES:

DOOR NUMBER (DOOR MARKS)	QTY.	NET OPENING SIZE	FINISHED DOOR SIZE	TYPE OF LIFT	TYPE OF OPERATION	SECT'S. GLAZED	LITES PER SECT.	PANELS WIDE	SECTIONS HIGH		
									24"	20.8"	18"
	1	20' - 2" X 12'	20' - 2" X 12' - 1"	HIGH	MOTOR	0	0	6	6	0	0

PROJECT:	ISHAM ESTATES
ARCHITECT:	KAREN ALI
CONTRACTOR:	COHEN INCORPORATED
DISTRIBUTOR:	WAYNE-DALTON - TEST COMPANY

DRAWN BY:	AADS	QUOTE/SALES ORDER No.	
DATE:	11/01/13		1737468 - 2
SHEET:		FILE No.	ZZ28682429

ARCHITECTURAL STAMP

ARCHITECTURAL NOTES

CONTRACTOR STAMP

REVISIONS

