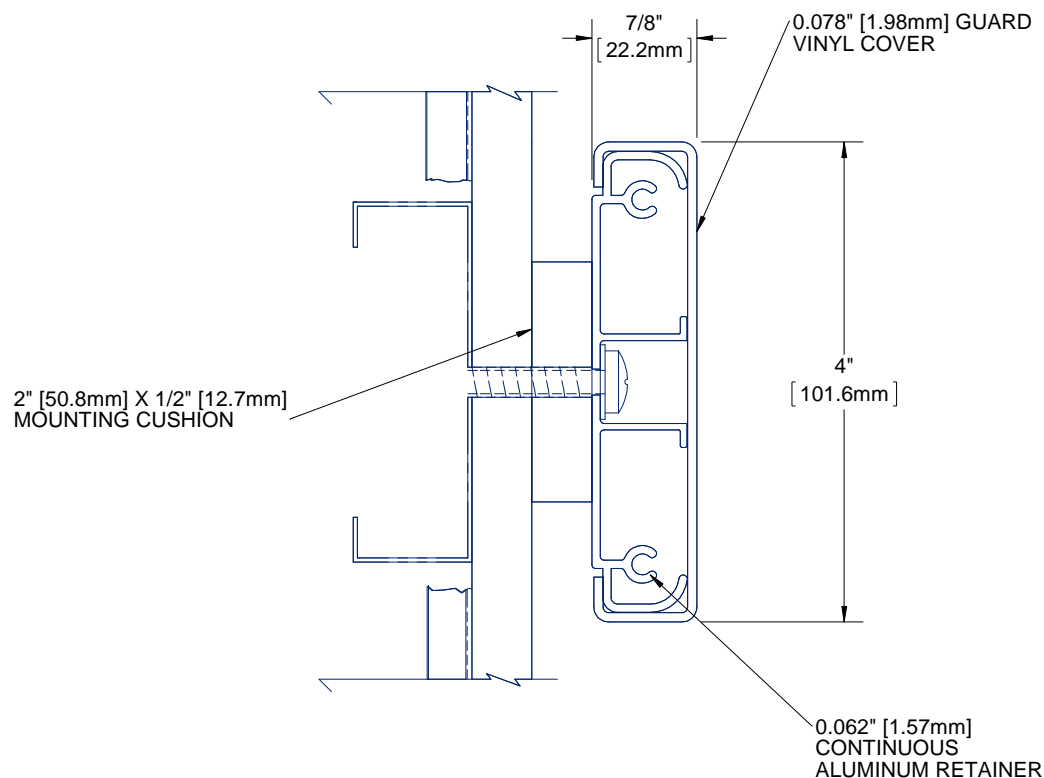


QUANTITY


COLOR



## NOTES:

- PROFILE:** HIGH IMPACT VINYL ACRYLIC EXTRUSION LOCKED IN PLACE, NOMINAL 0.078" (1.98mm) THICK
- CLASS A FIRE RATING, TESTED TO ASTM E84
- RETAINER:** CONTINUOUS 6063 T-5 ALUMINUM RETAINER, NOMINAL 0.062" (1.57mm) THICK
- EXTRUSION:** PEBBLE GRAIN FINISH WHICH CONTAINS EPA REGISTERED MICRO-CHEK ANTIMICROBIAL AGENT
- VINYL CRASH RAIL LENGTH:** PROVIDED IN 20' CONTINUOUS SECTIONS
- END CAP: #BCRVS4C-EC, OUTSIDE CORNER: #BCRVS4C-OC, 135 DEG OUTSIDE CORNER: #BCRVS4C-OC135, INSIDE CORNER: #BCRVS4C-IC, SPLICE KIT: #BCRVS4C-SK
- FASTENERS AND PARTITION COMPONENTS PROVIDED BY OTHERS.

PROPRIETARY AND CONFIDENTIAL: THE INFORMATION CONTAINED IN THIS DRAWING IS THE SOLE PROPERTY OF BABCOCK-DAVIS. ANY REPRODUCTION IN PART OR AS A WHOLE WITHOUT THE WRITTEN PERMISSION OF BABCOCK-DAVIS IS PROHIBITED.

PROJECT:					
ARCHITECT:					
CONTRACTOR:					
 9300 73rd Avenue North Brooklyn Park, MN 55428				TITLE:	
				4" VINYL CRASH RAIL SURFACE MOUNT 1/2" CUSHION, CONTINUOUS RETAINER	
	NAME	DATE	SIZE	DWG. NO.	REV
DRAWN	MDS	25APR13	A	BCRVS4C-C05	A
RELEASED	PGE	01MAY13	WEIGHT: 1.05 lbs/ft	SHEET 1 OF 1	