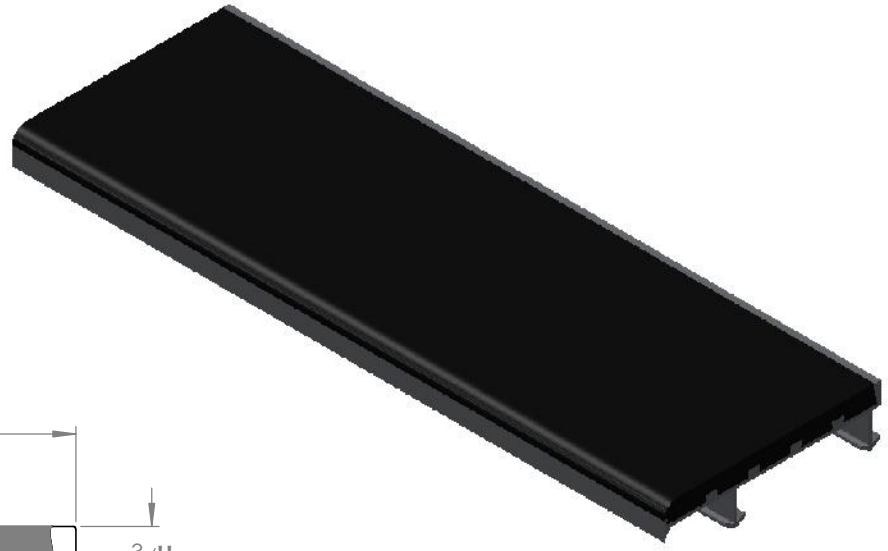
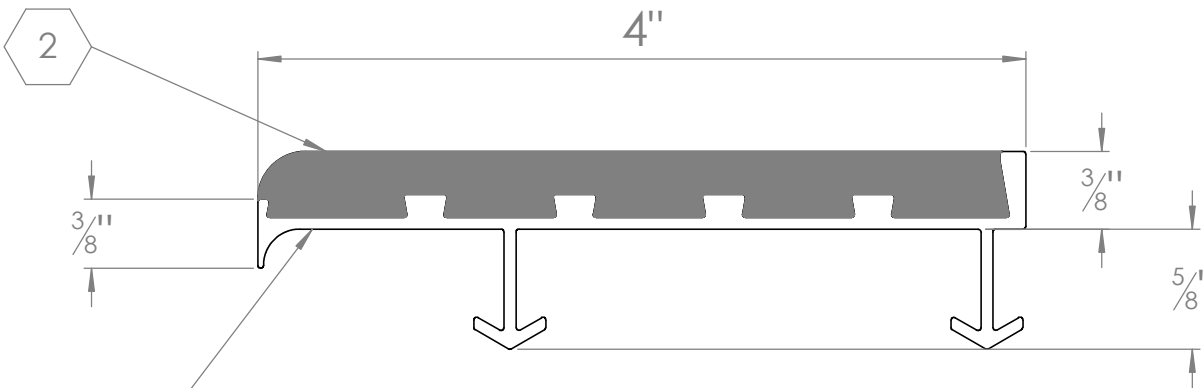


B

B



**MODEL P4E**

(SINGLE STAGE FULL ABRASIVE)

**SPECIFICATIONS:**

- ① **BASE:** HEAT TREATED EXTRUDED ALUMINUM ALLOY 6063 T-5
- ② **ABRASIVE:** ALUMINUM OXIDE SILICON CARBIDE GRANULES IN A UV PROTECTED, 2 PART EPOXY, LOCKED INTO EXTRUDED CHANNELS
- 3. **BASE FINISH:** MILL
- 4. **POURED CONCRETE STAIRS:** NOSING SHALL TERMINATE NO MORE THEN 3" FROM END OF STEPS
- 5. **CONCRETE FILLED STEEL PAN STAIRS:** NOSING SHALL BE FULL LENGTH OF STEPS, LESS 1/8" CLEARANCE
- 6. **COLOR:** BLACK (STANDARD), SAFETY YELLOW, GRAY, RED, BROWN, GREEN, BURGUNDY, BLUE, BUFF, LUMINESCENT
- 7. **LENGTH:** 120" MAXIMUM
- 8. **UL 1994 LISTED:** COMBINED WIDTH OF PHOTO-LUMINESCENT MATERIAL SHALL NOT BE LESS THAN 1"

| LENGTH | QTY | COLOR |
|--------|-----|-------|
|        |     |       |
|        |     |       |
|        |     |       |
|        |     |       |
|        |     |       |
|        |     |       |

|   |      |  |                 |              |
|---|------|--|-----------------|--------------|
| PROJECT:  |      |  |                 |              |
| ARCHITECT:  |      |  |                 |              |
| CONTRACTOR:   |      |  |                 |              |
| QTY:  |      |  |                 |              |
| PART#:  |      | <b>BSTSF-P4E</b>   |                 |              |
| <br><b>Babcock-Davis</b><br><small>Always right there.</small><br>9300 73rd Avenue North<br>Brooklyn Park, MN 55428 |      | TITLE:   |                 |              |
|   |      | VBF41, Stair Tread,<br>Full Abrasive,<br>Short Nose, Alum Extruded Anchor, |                 |              |
| NAME  | DATE | SIZE   | DWG. NO.        | REV          |
| DRAWN   | BMH  | 3/14/11  | A               | BSTSF-P4E    |
| RELEASED  | PE   | 3/14/11  | WEIGHT: 1.50 LB | SHEET 1 OF 1 |

PROPRIETARY AND CONFIDENTIAL: THE INFORMATION CONTAINED IN THIS DRAWING IS THE SOLE PROPERTY OF BABCOCK-DAVIS. ANY REPRODUCTION IN PART OR AS A WHOLE WITHOUT THE WRITTEN PERMISSION OF BABCOCK-DAVIS IS PROHIBITED.