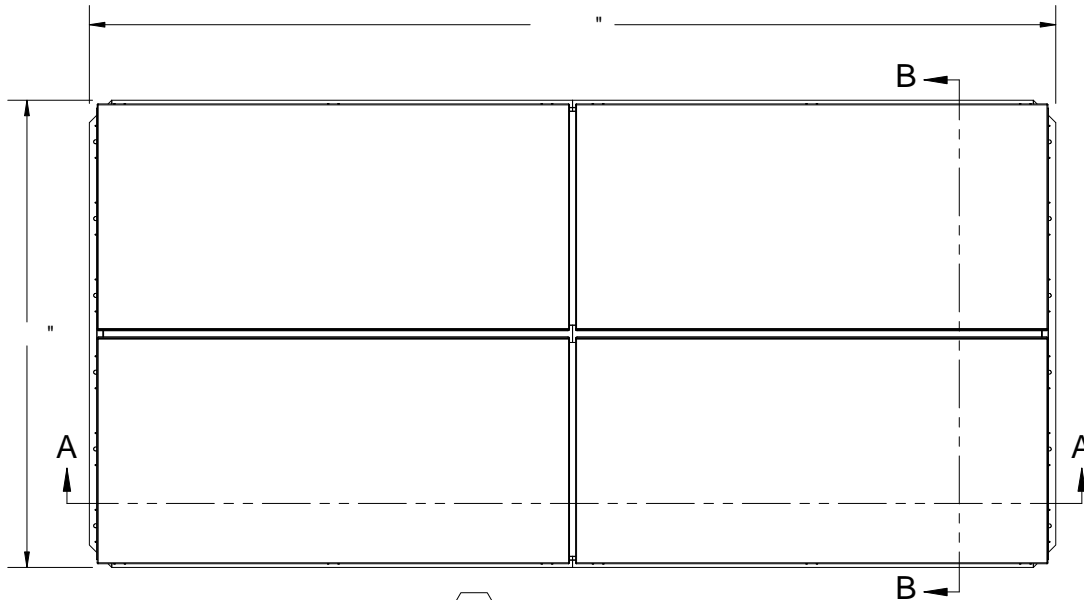


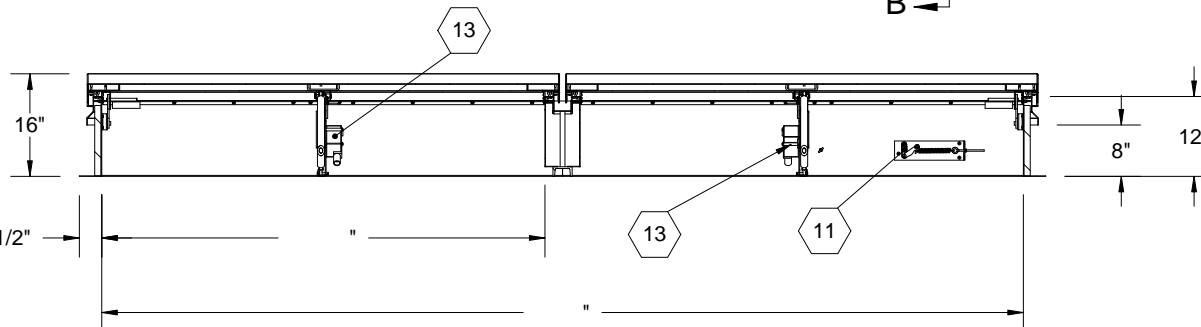


B

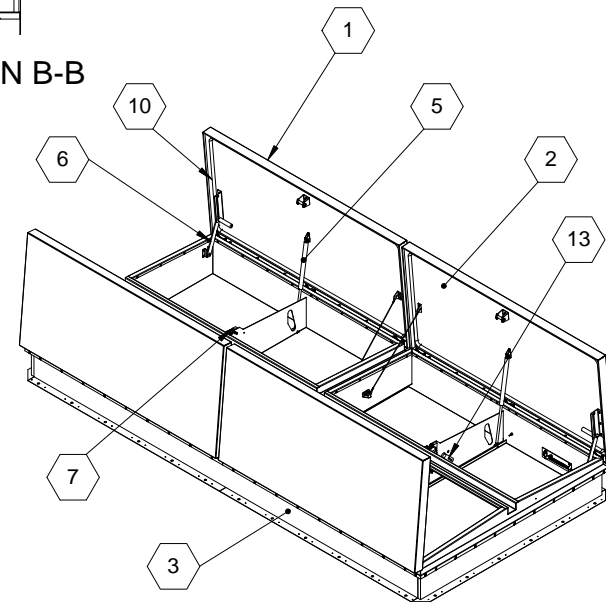
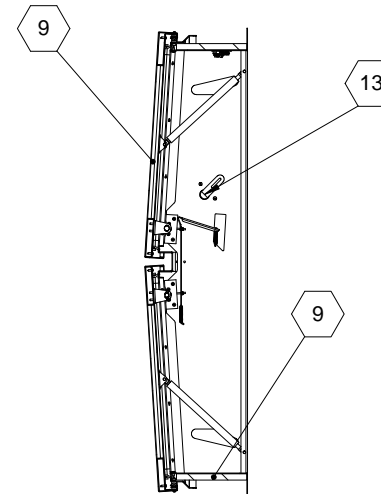
B



SECTION A-A



SECTION B-B

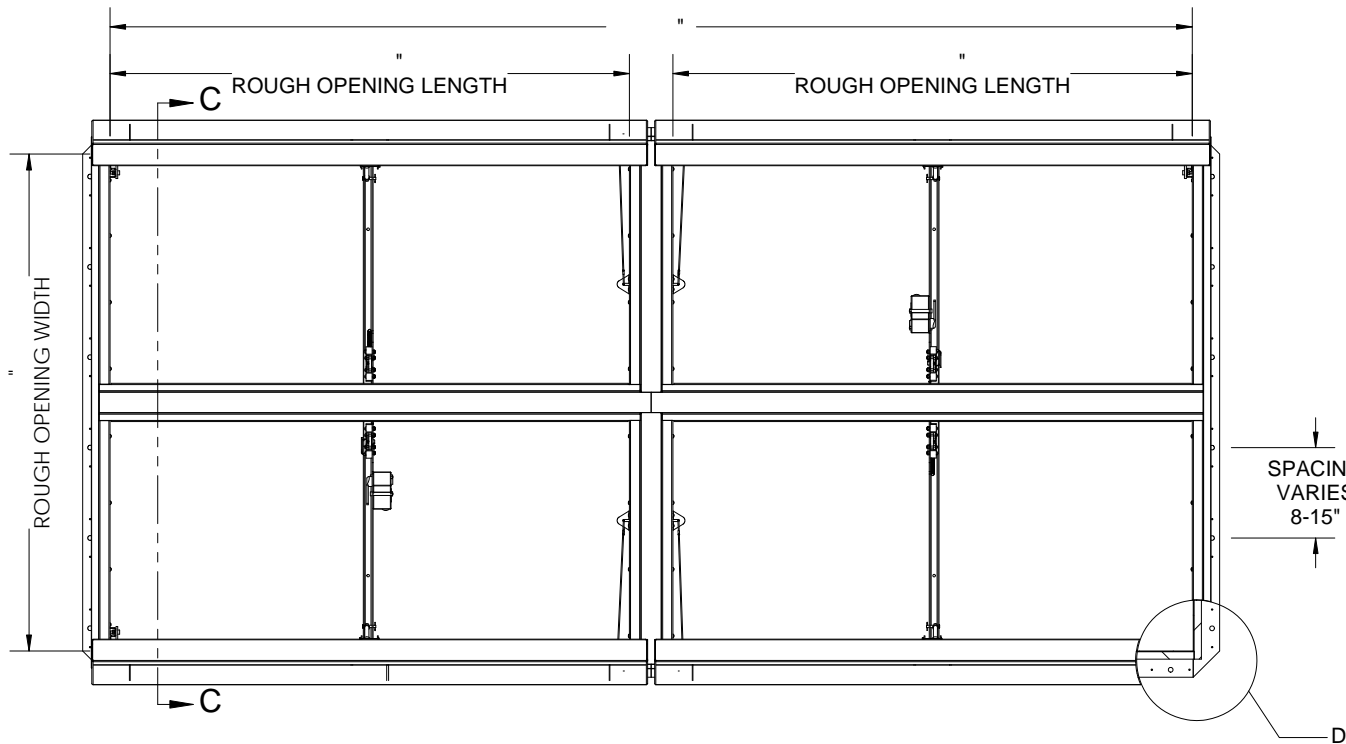


## SPECIFICATIONS:

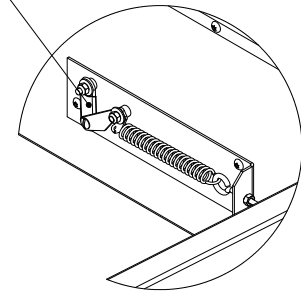
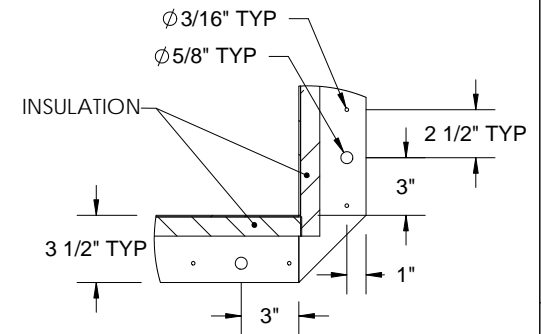
- ① **COVER:** 14 GAUGE GALVANNEAL COVER STIFFENED TO WITHSTAND A LIVE LOAD OF 40 PSF WITH A MAX DEFLECTION OF A 1/150 OF THE SPAN
- ② **LINER:** 22 GAUGE GALVANNEAL
- ③ **CURB AND COUNTERFLASH W/ EZ TAB:** 14 GAUGE GALVANNEAL
- ④ **FINISH:** COVER - POWDER COAT PAINT, HIGH REFLECTANCE WHITE  
CURB - POWDER COAT PAINT, HIGH REFLECTANCE WHITE
- ⑤ **GAS SPRING WITH DAMPER:** DESIGNED TO OPEN AGAINST A 10PSF SNOW LOAD IN NOT LESS THAN 2 SECONDS
- ⑥ **HOLD OPEN ARM:** LOCK COVER IN FULLY OPEN POSITION - ZINC PLATED STEEL
- ⑦ **LATCH:** ZINC PLATED ROTARY LATCH ASSEMBLY DESIGNED TO HOLD COVERS CLOSED AGAINST 90 PSF PSF WIND UPLIFT ZINC PLATED STEEL LATCH STRIKERS ON COVERS
- ⑧ **HINGES:** ZINC PLATED STEEL WITH STAINLESS STEEL HINGE PINS
- ⑨ **INSULATION:** 1" POLYISOCYANURATE IN COVER AND AROUND CURBING PERIMETER, R-VALUE 6
- ⑩ **GASKET:** ADHESIVE BACKED EPDM RUBBER EXTRUSION
- ⑪ **THERMAL RELEASE MECHANISM:** VENT COVERS OPEN THERMALLY BY HEAT AT FUSIBLE LINK TEMPERATURE °F
- ⑫ **MANUAL OPENING:** VENT COVERS OPEN WITH INTERNAL AND EXTERNAL MANUAL PULL HANDLE, 1/16" DIA SST CABLE
- ⑬ **ELECTRICAL RELEASE:** VENT COVERS OPEN ELECTRICALLY WHEN ENERGIZED WITH
- ⑭ **BURGLAR BARS:** NONE
- SMOKE VENT SIZE**    "(WIDTH) x    "(LENGTH)
- EFFECTIVE VENTING AREA 80%**    SQFT

PROPRIETARY AND CONFIDENTIAL: THE INFORMATION CONTAINED IN THIS DRAWING IS THE SOLE PROPERTY OF BABCOCK-DAVIS. ANY REPRODUCTION IN PART OR AS A WHOLE WITHOUT THE WRITTEN PERMISSION OF BABCOCK-DAVIS IS PROHIBITED.

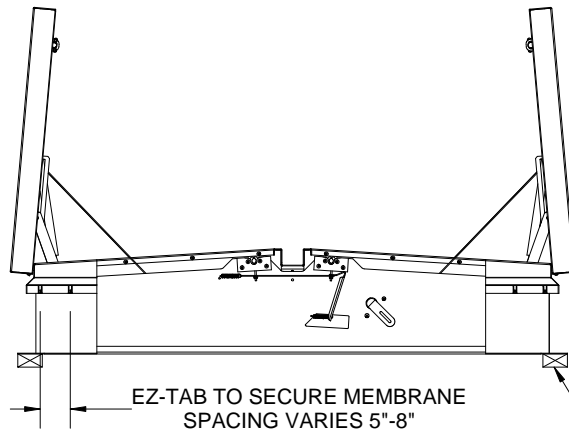
PROJECT:					
ARCHITECT:					
CONTRACTOR:					
QTY:					
PART#:		BSVSW    X    Q1    R			
 9300 73rd Avenue North Brooklyn Park, MN 55428		TITLE:			
		Smoke Vent, SmokEscape Series Galvanneal, Quad Door, Single Wall Curb, Electrical			
	NAME	DATE	SIZE	DWG. NO.	REV
DRAWN	SGS	11/23/11	A	BSVSW_X_Q1_R	-
RELEASED	IMT	11/23/11	WEIGHT: VARIES LBS		SHEET 1 OF 2



FUSIBLE LINK

SPACING  
VARIES  
8-15"

DETAIL D



SECTION C-C

CONCRETE/WOOD/OTHER  
MATERIAL PROVIDED BY OTHER  
NIC**SMOKE VENT COVER OPENS WHEN ACTIVATED BY:****A. THERMAL RELEASE MECHANISM:** RELEASED BY HEAT WITH A UL LISTED FUSIBLE LINK AT TEMPERATURE °F**OPTIONS:** 165°F, 212°F, 280°F, 350°F, 360°F, 370°F, 386°F, 450°F**B. MANUAL OPENING:** RELEASED BY EXTERNAL AND INTERNAL PULL CABLES WITH HANDLES AND 5FT OF INTERNAL CABLE PROVIDED**C. ELECTRICAL RELEASE:** RELEASED BY A 2.5 WATT UL LISTED ROTARY ACTUATOR WHEN ENERGIZED TO**SMOKE VENT COVER CLOSED MANUALLY FROM ROOFTOP**

**Babcock-Davis**  
*Always right there.*  
 9300 73rd Avenue North  
 Brooklyn Park, MN 55428

TITLE:

Smoke Vent, SmokEscape Series  
Galvanneal, Quad Door, Single Wall  
Curb, Electrical

	NAME	DATE	SIZE	DWG. NO.	REV
DRAWN	SGS	11/23/11	A	BSVSW_X_Q1__R	-
RELEASED	IMT	11/23/11	WEIGHT: VARIES LBS		SHEET 2 OF 2