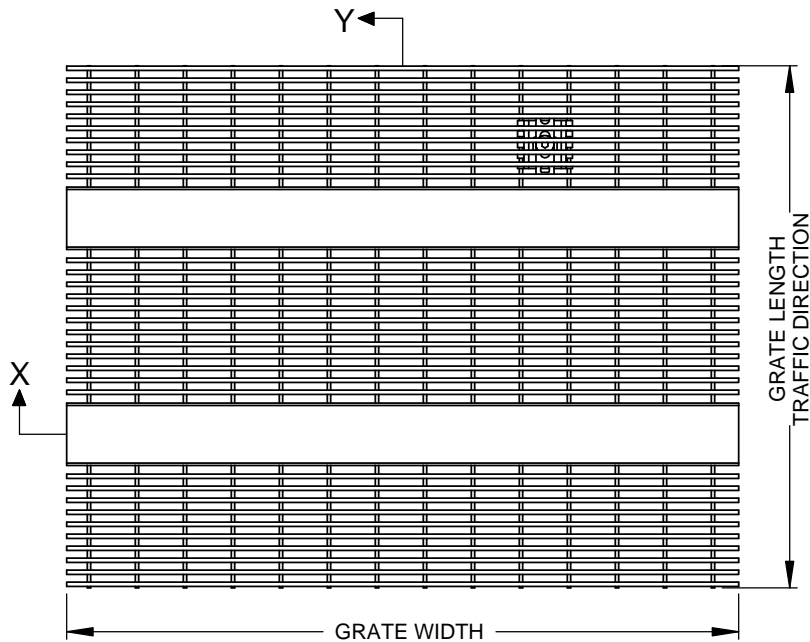




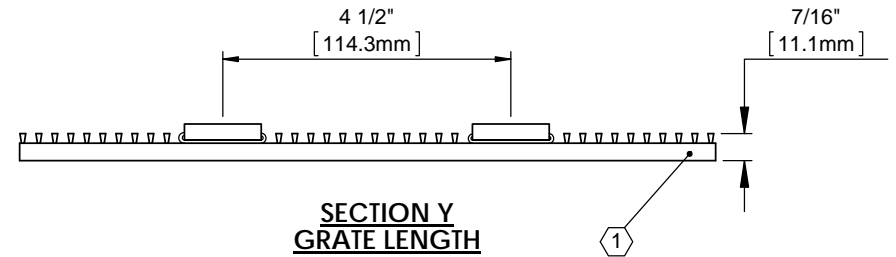
SS-38A
ULTRASORB
INSERT



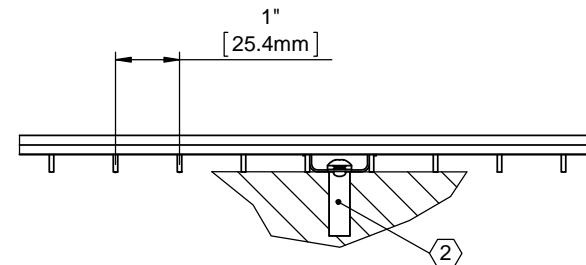
SS-38S
RUGGED
SCRUB
INSERT



TYPICAL PLAN VIEW



**SECTION Y
GRATE LENGTH**




**SECTION X
GRATE WIDTH**

Notes:

- ① Grates are made of type 304 stainless steel and are 7/16" (11.1mm) deep with inserts spaced 4 1/2" (114.3mm) O.C. Wire is .093 x .156 (2.4mm x 4.0mm), spaced .233 (5.9mm) O.C. with welded .070 (1.8mm) thick support rods spaced 1" (25.4mm) O.C.
- ② Field installed hidden lockdown assembly with concrete anchor.
- 3. Grate surface wires must run perpendicular to traffic direction.

- 4. Frame options:
 - SS-38SF, stainless steel angle frame, cast in place.
 - SS-38SFD, stainless steel angle frame, mechanically fastened.
 - F-12, aluminum surface mount frame, mechanically fastened.
 - F-13, aluminum recessed frame, cast in place.

5. Additional information can be found in the product specification and is considered part of this transmittal.

| | | | | | |
|--|------|--------------------------------|------------|------------------------|-----|
| PROJECT: | | | | | |
| ARCHITECT: | | | | | |
| CONTRACTOR: | | | | | |
|  9300 73rd Avenue North Brooklyn Park, MN 55428 | | DESCRIPTION: | | | |
| | | SS-38 Elegril, with Inserts | | | |
| | NAME | DATE | SIZE | MODEL NO. | REV |
| DRAWN | DKL | 8/9/12 | A | SS-38 Elegril, Inserts | A |
| RELEASED | PGE | 10/9/12 | SCALE: NTS | SHEET 1 OF 1 | |