

A

B

B


1

2

NOTES:

- 1 FRAME:
- 2 DOOR:
- 3 FINISH:
- 4 HINGE: Concealed Rod Hinge
- 5 LATCH:

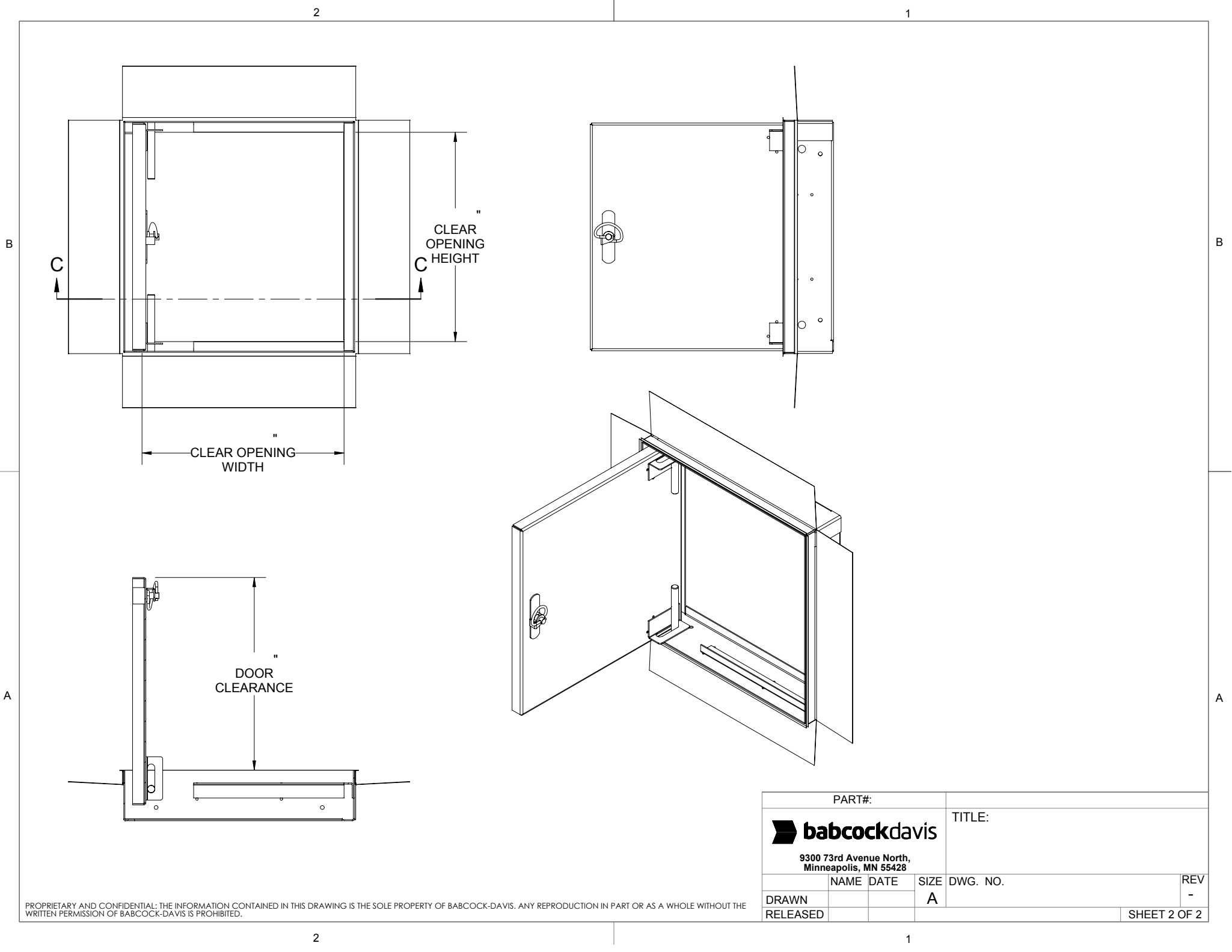
ROUGH OPENING: " X " X
CLEAR OPENING: " X " X
DEGREE OF OPENING: 100°
CAM QTY: Latch Side
Top/Bottom Side

PROJECT:			
ARCHITECT:			
CONTRACTOR:			
QTY:			
PART#:			
 9300 73rd Avenue North, Minneapolis, MN 55428		TITLE:	
NAME	DATE	SIZE	DWG. NO.
DRAWN		A	
RELEASED			
			REV -
			SHEET 1 OF 2


PROPRIETARY AND CONFIDENTIAL: THE INFORMATION CONTAINED IN THIS DRAWING IS THE SOLE PROPERTY OF BABCOCK-DAVIS. ANY REPRODUCTION IN PART OR AS A WHOLE WITHOUT THE WRITTEN PERMISSION OF BABCOCK-DAVIS IS PROHIBITED.

2

1



PROPRIETARY AND CONFIDENTIAL: THE INFORMATION CONTAINED IN THIS DRAWING IS THE SOLE PROPERTY OF BABCOCK-DAVIS. ANY REPRODUCTION IN PART OR AS A WHOLE WITHOUT THE WRITTEN PERMISSION OF BABCOCK-DAVIS IS PROHIBITED.

PART#:			TITLE:		
 9300 73rd Avenue North, Minneapolis, MN 55428					
	NAME	DATE	SIZE	DWG. NO.	REV
DRAWN			A		-
RELEASED					