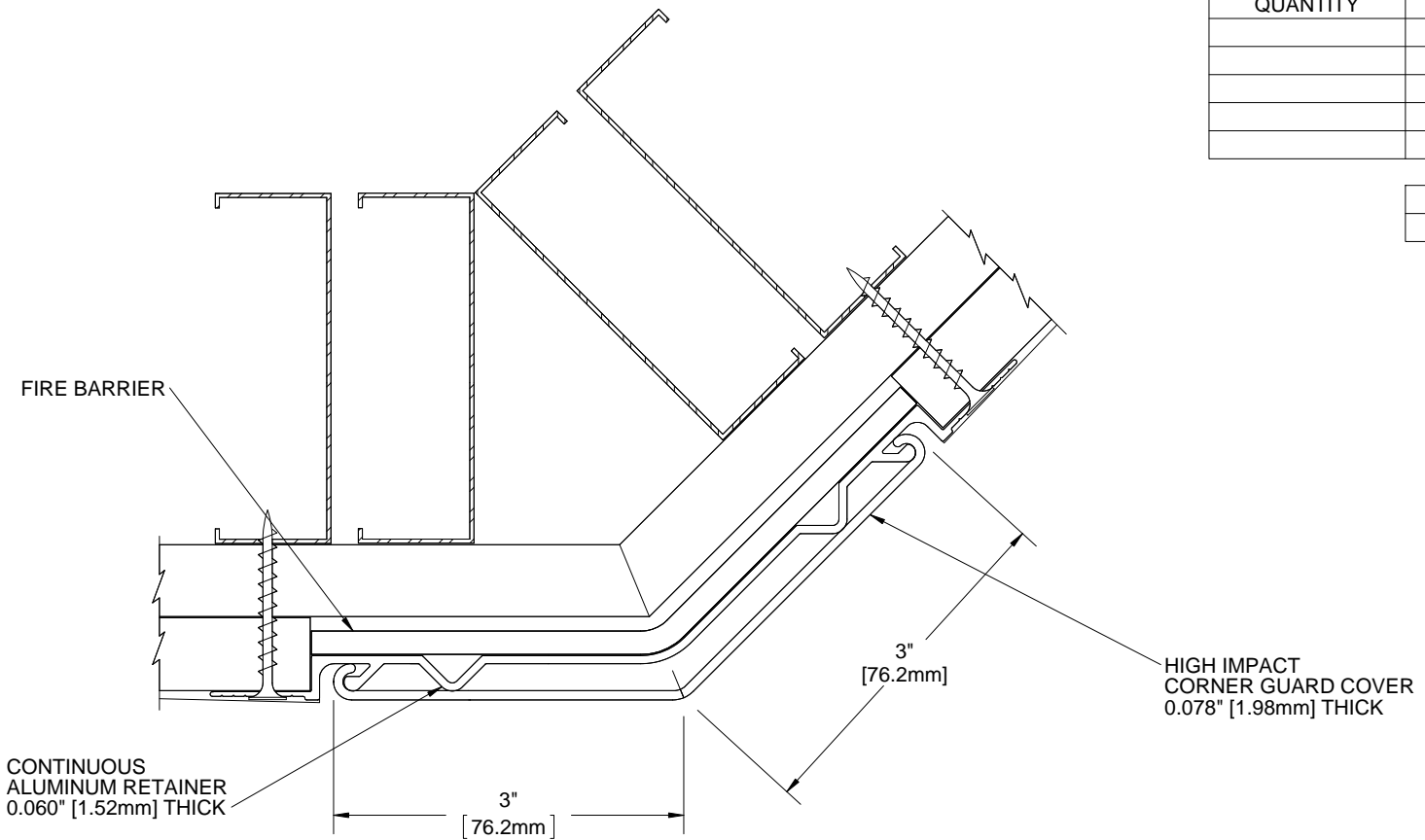


QUANTITY	LENGTH

COLOR



NOTES:

- PROFILE:** HIGH IMPACT VINYL ACRYLIC EXTRUSION LOCKED IN PLACE, NOMINAL 0.078" (1.98mm) THICK
- CLASS A FIRE RATING, 2 HOUR, TESTED TO ASTM E84**
- RETAINER:** CONTINUOUS 6063 T-5 ALUMINUM, NOMINAL 0.060" (1.52mm) THICK
- EXTRUSION:** PEBBLE GRAIN FINISH WHICH CONTAINS EPA REGISTERED MICRO-CHEK ANTIMICROBIAL AGENT
- MAXIMUM LENGTH:** VINYL CORNER GUARDS 20'
- HARDWARE:** #6 X 1-5/8" DRYWALL SCREWS INCLUDED
- 6063-T5 ALUMINUM COVE BASE INCLUDED, 4" STANDARD HEIGHT
- PARTITION COMPONENTS PROVIDED BY OTHERS. FINISHED LENGTH INCLUDES COVE BASE.

PROJECT:					
ARCHITECT:					
CONTRACTOR:					
9300 73rd Avenue North Brooklyn Park, MN 55428		TITLE: 3" CORNER GUARD RECESS MOUNT, 135 DEGREE 2 HOUR FIRE RATING			
		NAME	DATE	SIZE	DWG. NO.
DRAWN	MDS	24APR13	A	BCGVF3S-D135	A
RELEASED	PGE	01MAY13	WEIGHT: 1.78 lbs/ft		SHEET 1 OF 1