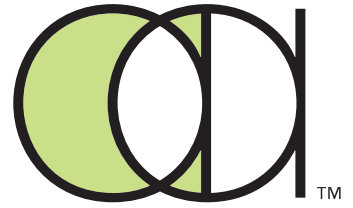
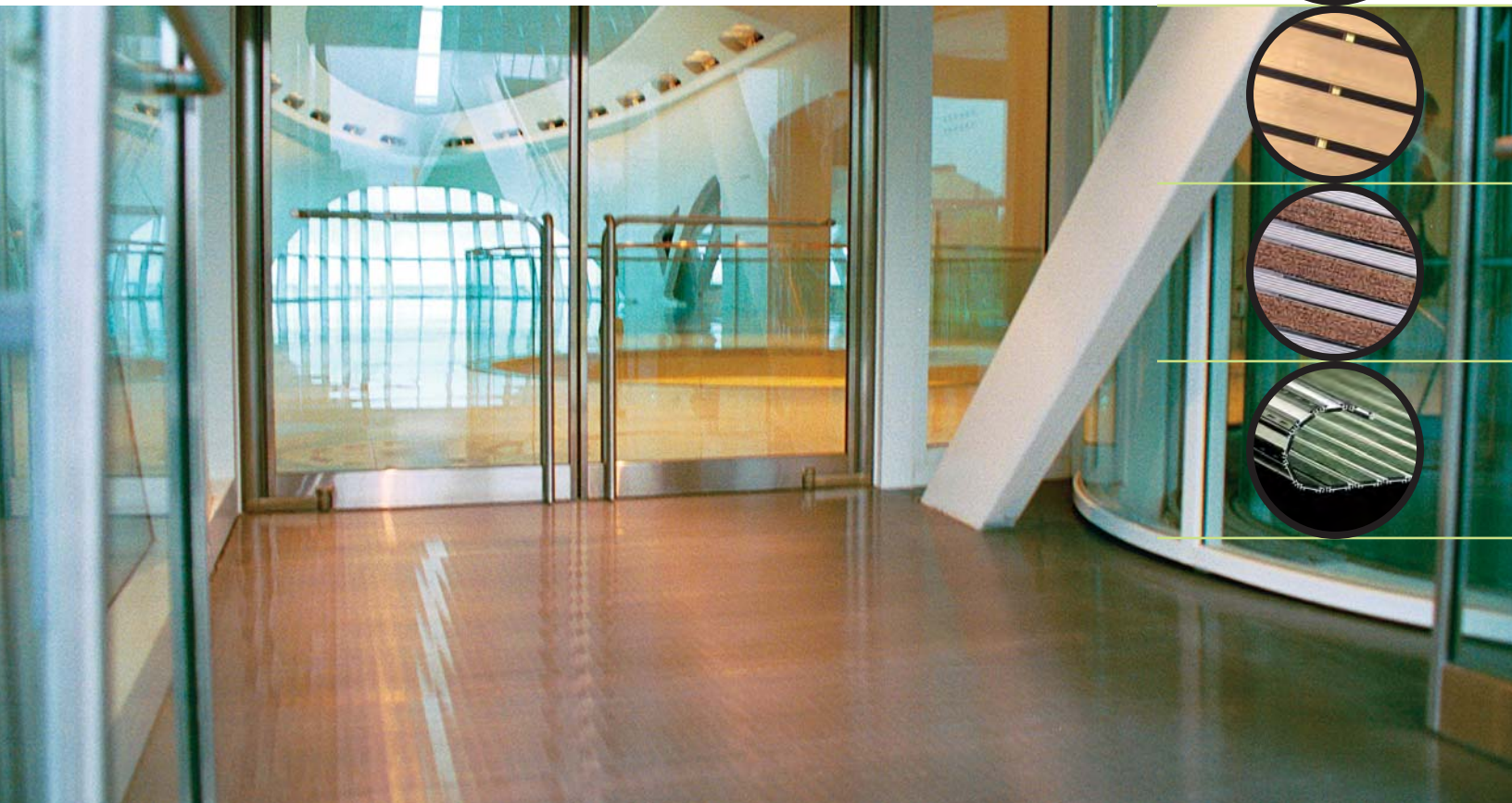
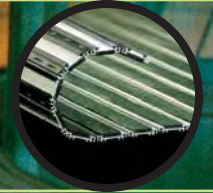
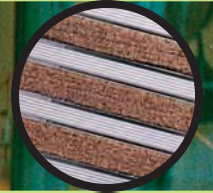


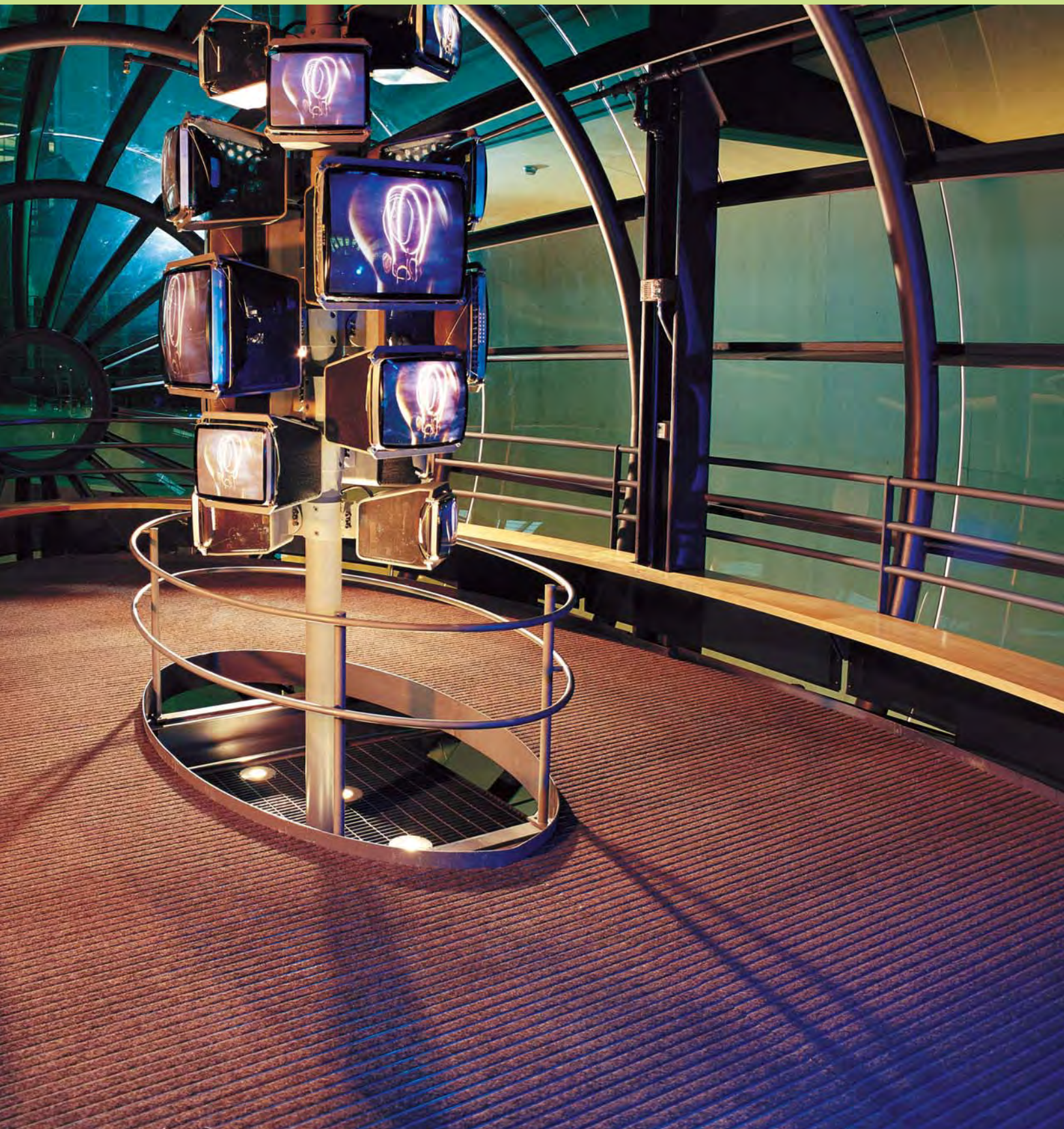
Arden Architectural Specialties, Inc.



Entrance Flooring Systems



Designing and manufacturing specialty products is our business. Customer service is our specialty.



Making the right choice in an entrance flooring system will maintain your design, add years to your floor's life, ensure a safe entrance and significantly reduce maintenance costs. Let us help you find the right solution.

Online

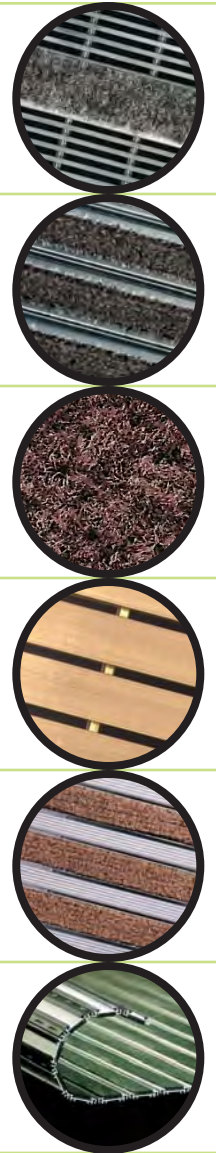
Our latest information is always available online. Visit www.ardenarch.com. Use our dynamic product selection tool, visualize products in the available colors and finishes, download specifications based on your selections, request quotes based on your selections, and get product details, CAD drawings, installation and maintenance instructions, and recycled content and other LEED related information.

On the phone

Our customer service representatives can help you select the right product for your project and answer your technical questions.

Live

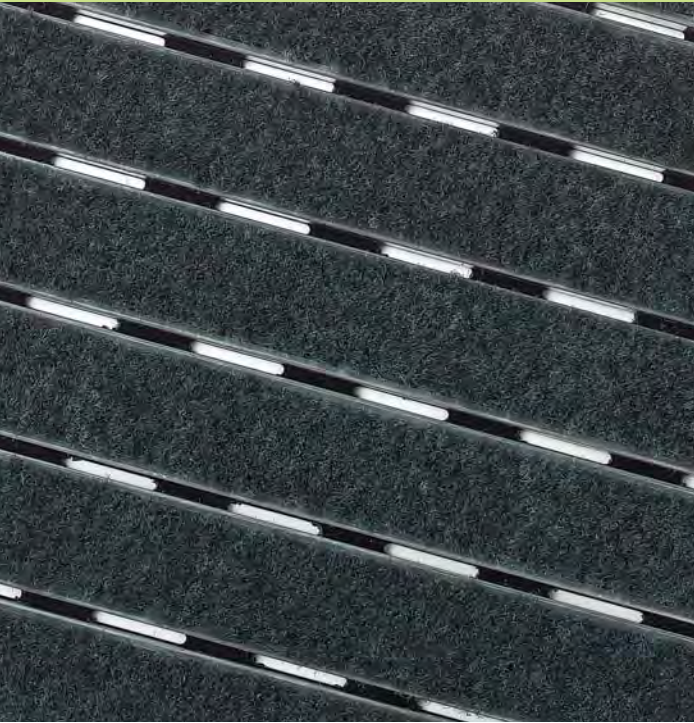
We have independent representatives and dealers throughout the country who would be happy to visit your office and answer your questions. Contact us for the name of a representative or dealer near you.



Cover photograph: Milwaukee Art Museum, Milwaukee, WI
Architect: Graef, Anhalt, Schloemer & Associates, Milwaukee, WI
Construction Manager: CG Schmidt, Inc., Milwaukee, WI
Installing Contractor: DUWE Metal Products, Menomonee Falls, WI

Page 2 photograph: Corning Museum of Glass, Corning, NY
Architect: Ralph Appelbaum Associates, Inc.

Roll-up Grates



GRATE design® I I I

We designed our roll-up grates to meet the demands of retail and commercial applications. Grocery carts and dollies glide quietly over roll-up grates while dirt from shoes and wheels gathers in the recess. The grates are easy to clean and, if necessary, tread strips can be replaced in the field.

Construction

- Aluminum extrusions are engineered to withstand heavy loads without warping or collapsing. They are joined with recycled low-density polyethylene hinges.
- UltraSorb®, Rugged Scrub® and all of our standard tread strips slide in. End caps provide clean edges and secure tread strips without rivets.

Installation

Roll-up grates are intended for level-bed installation in a flat recess.

Specifications

Specifications, CAD drawings, recycled content percentages and more detailed product information are available on our web site at www.ardenarch.com. Call us with questions or to request a detailed product binder.

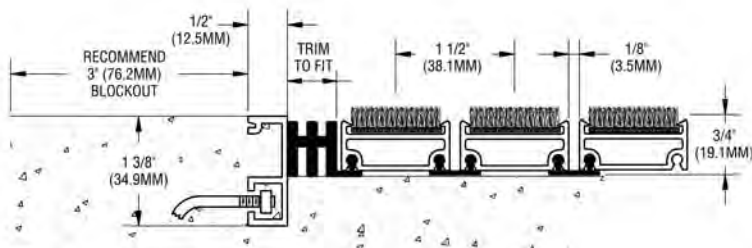
Model G-150U	UltraSorb®*
Model G-150RS	Rugged Scrub®*
Model G-150	Carpet
Model G-250	Vinyl
Model G-250RT	Rubber
Model G-350	Abrasive Insert

*These treads are the best choices for heavy-traffic entrances and carry an extended five-year warranty. Standard warranty is two years.

Specifications

Specifications, CAD drawings, recycled content percentages and more detailed product information are available on our web site at www.ardenarch.com. Call us with questions or to request a detailed product binder.

Additional information on tread surfaces is listed on pages 16–19.

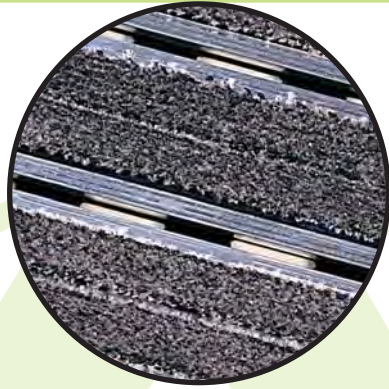


Model G-150 roll-up grate with F-11 frame



EnvIRONtread Mats and Grates

EnvIRONtread®



EnvIRONtread grates provide all the benefits of buffed-rubber treads with the added benefits of increased drainage and more color options. Two treads per rail on all EnvIRONtread products provide the maximum cleaning surface.

These unique products are available exclusively from Arden Architectural.

Construction

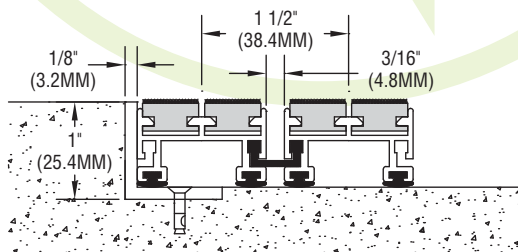
- Two treads per rail double the surface for absorbing moisture.
- Our roll-up mats and roll-up grates use a low-density polyethylene hinge that won't crack or break when exposed to changes in temperature or UV light.
- Large drain holes in the roll-up mat and grate, and continuous drainage in the rigid grate, allow dirt and moisture to fall through to the recess.
- The rigid G-285 grate, when used with keylocks every 3 inches, can handle 2,000 lbs./ft.², making it ideal for use in airports or other areas with heavy pedestrian and light vehicle traffic.

Installation

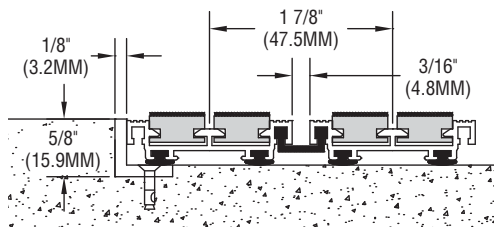
- Model G-212 EnvIRONtread II grates can be surface mounted or recessed.
- Model G-218 EnvIRONtread II grates, model G-275 EnvIRONtread roll-up grates and model M-775 EnvIRONtread roll-up mats are intended for level-bed installation in a flat recess.
- Model G-285 rigid grates can be installed in a level-bed frame or over a deep pit with the F-2 frame.

Specifications

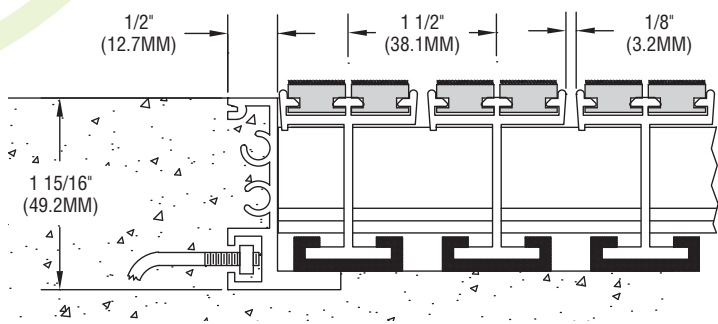
Specifications, CAD drawings, recycled content percentages and more detailed product information are available on our web site at www.ardenarch.com. Call us with questions or to request a detailed product binder.



Model G-275 roll-up grate with F-10 frame



Model M-775 roll-up mat with F-9 frame



Model G-285 rigid grate with F-1 level-bed (shown) or F-2 deep-pit frame

ENVIRON Tread® II



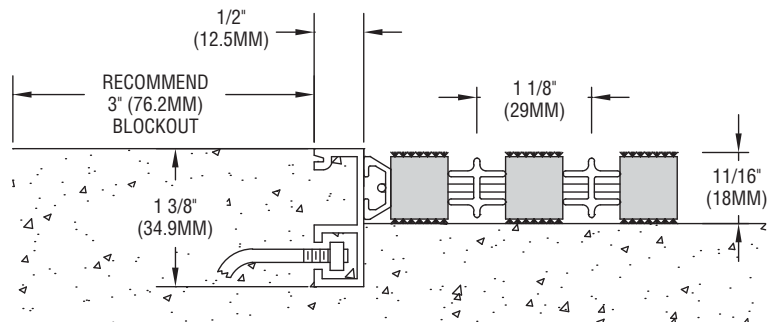
Recycled. We buff the surface of nylon-reinforced truck and airplane tire strips to reveal the fibers embedded within the rubber. This, along with recycled aluminum divider bars, makes this product 95 percent recycled material by cost.

Reversible. Double-sided treads make symmetrical grates perfectly reversible. Just flip them over to increase product life.

Responsible. Building a sustainable design involves more than using recycled products. These products must last. The process of buffing the fibers out of used tires creates tread strips with an attractive velvety surface that will never shed. This allows the grates to look new and last longer than virtually any other type of textile entrance mat or grate. And, the treads effectively absorb moisture and remove dirt.

Construction

- Recycled tire treads have a buffed surface on both the top and bottom.
- Recycled aluminum divider bars separate treads.
- Treads and divider bars are bound with hard, cold galvanized steel wire inserted perpendicular to treads through holes in the treads and bars.
- Channels in the divider bars provide a collection basin for dirt and moisture.



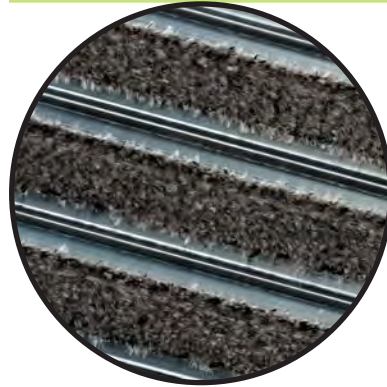
Model G-218 11/16" (18 mm) deep grate with F-11 frame (shown)

Model G-212 15/32" (12 mm) deep grate with F-13 frame for recessed applications (similar construction to above) or the F-12 frame for surface-mounted applications

These models are available with open construction (G-218S, G-212S) or with double treads (G-218D, G-212D).

Specifications

Specifications, CAD drawings, recycled content percentages and more detailed product information are available on our web site at www.ardenarch.com. Call us with questions or to request a detailed product binder.



Stainless Steel Grates and Air Grilles



e l e GRIL®

These versatile grates are most often used in entrances, but are also an innovative solution in other applications, including high-impact wall grilles, distinctive pedestrian bridges, fountains, decorative suspended ceilings and other creative installations. Elegant and durable, they stand up to extremely heavy pedestrian and rolling traffic.

EleGRIL Absorb and EleGRIL Scrub combine the strength and lustrous beauty of stainless steel with the absorbency and dirt-removing power of UltraSorb® or Rugged Scrub® treads. This creates a cleaner, dryer entrance while maintaining an elegant look.

Construction

- The grates are constructed of stainless steel wire that is resistance-welded to stainless steel crossbars for total heights of 7/16" (11.1 mm), 5/8" (15.9 mm) or 9/8" (28.6 mm).
- EleGRIL Absorb and EleGRIL Scrub grates are 3/8" (9.5 mm) deep. Treads are spaced on 5" (128 mm) centers.

Installation

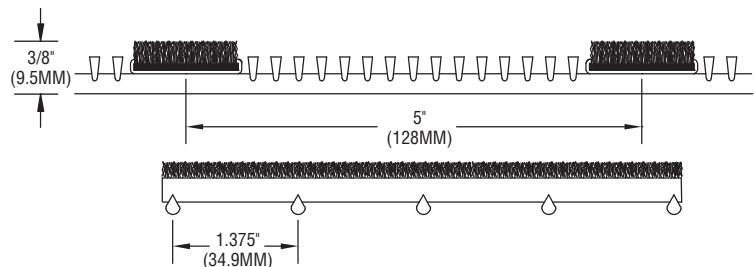
- The SS-98G grate can be installed on a level bed with an aluminum or stainless steel frame or with a deep-pit stainless steel frame and cross supports.
- Models SS-38G, SS-38A and SS-58G are intended for level-bed installation with either aluminum or stainless steel frames.
- Models SS-38G and SS-38A can also be surface mounted with the F-12 or F-4 frames.

Our grates are not slippery, but wet floors are. We highly recommend using UltraSorb broadloom goods in conjunction with plain metal gratings to remove moisture. UltraSorb is featured on page 16.

Specifications

Coefficient of Friction: 0.61 (plain metal models)

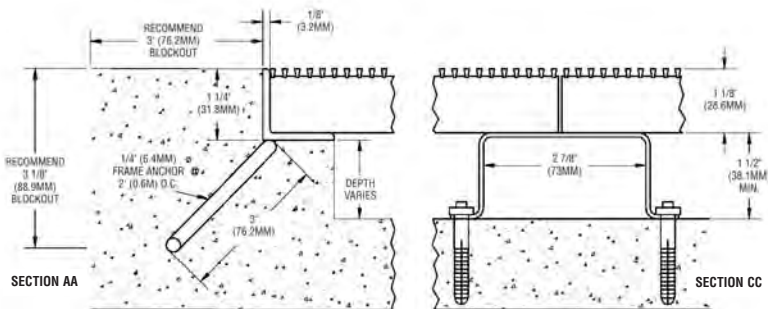
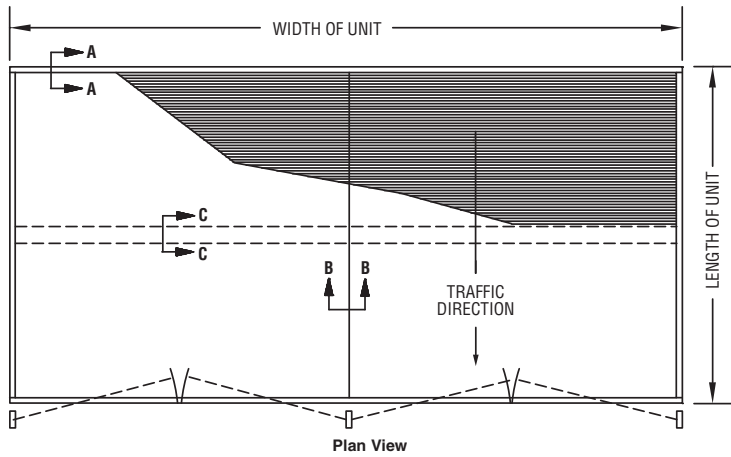
Specifications, CAD drawings, recycled content percentages and more detailed product information are available on our web site at www.ardenarch.com. Call us with questions or to request a detailed product binder.



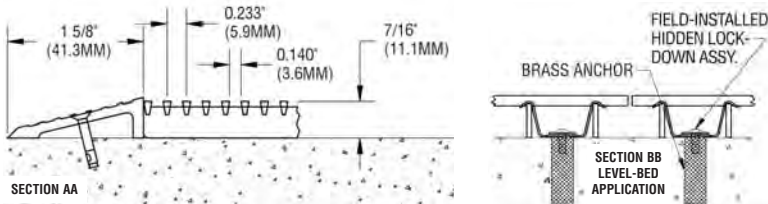
Model SS-38A (EleGRIL Absorb or EleGRIL Scrub) 3/8" (9.5 mm) deep grate available with UltraSorb or Rugged Scrub spaced on 5" (128 mm) centers for use with F-4 surface-mounted aluminum or stainless steel level-bed frame.



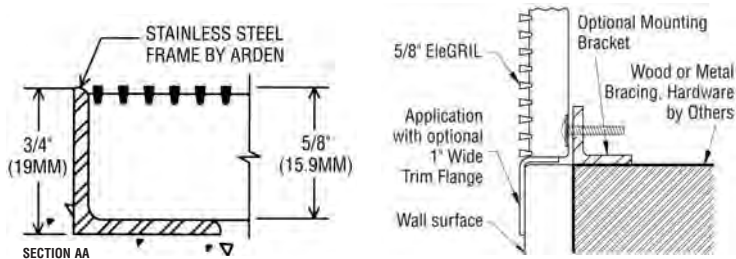
Our new
EleGRIL Absorb



Model SS-98G 9/8" (28.6 mm) deep grate available with aluminum or stainless steel recessed level-bed frame or stainless steel deep-pit frame



Model SS-38G 7/16" (11.1 mm) deep grate available with F-12 frame for surface installation or F-13 aluminum frame or stainless steel angle frame for recessed installation
Intermediate anchors required for all models



Floor application

Wall-mounted application

Model SS-58G 5/8" (15.9 mm) deep grate available with aluminum or stainless steel level-bed frame



*Buffalo Niagara Airport, Buffalo, NY
Architect: Kohn Pedersen Fox*

Aluminum Grates



Arden Architectural's GrateDesign rigid aluminum grates are quiet and sturdy.

Construction

- Aluminum rails are mechanically joined with keylocks every 6" (152 mm) or 3" (76 mm) to eliminate torque from extremely heavy rolling loads. The grates are much stronger and quieter than grates with keylocks spaced every 8" (203 mm) or 10" (254 mm) or grates with bolted or welded construction.
- Adjustable cushions eliminate clatter and minimize the effects of surface irregularities.

Installation

Use the F-1 frame for level-bed applications. For installation over a pit or sloped recess, use the F-2 frame and adjustable cross supports. An optional drain pan is available, but is not usually necessary for installation over a concrete pit.

Specifications

Specifications, CAD drawings, recycled content percentages and more detailed product information are available on our web site at www.ardenarch.com. Call us with questions or to request a detailed product binder.

Model G-100U
UltraSorb®

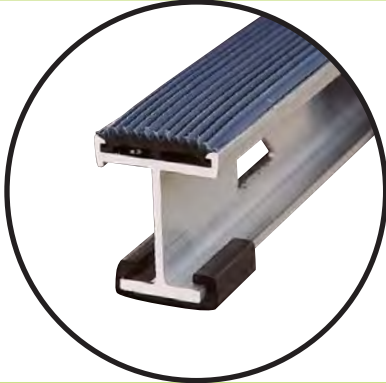
Model G-100RS
Rugged Scrub®

Model G-100
Carpet

Model G-200
Vinyl

Model G-200TR
Rubber

Model G-300
Abrasive Insert



Model G-285
EnvIRONtread®

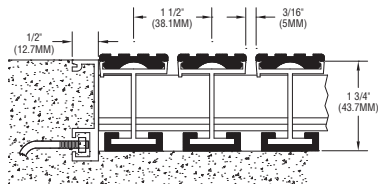
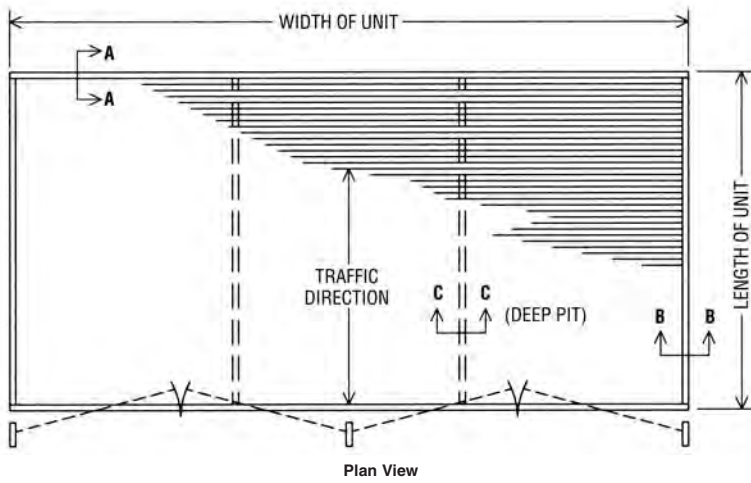


Model G-400
Aluminum Abrasive

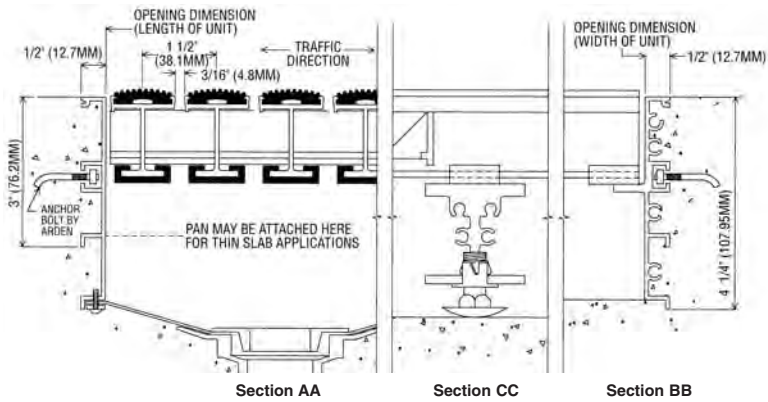


Model G-500
Serrated Aluminum





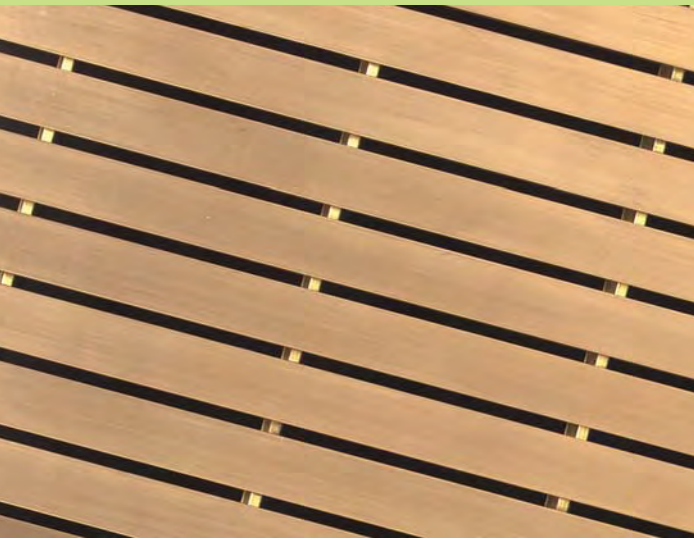
GrateDesign® rigid grate with F-1 level-bed frame



GrateDesign rigid grate with F-2 deep-pit frame



Thin Line Grates



The sleek look of Thin Line grates creates a clean entrance.

Construction

- Thin Line grate rails are joined mechanically with keylocks every 3" (76 mm).
- Waffle grates have striations cut perpendicular to the traffic direction to create a grid pattern that is ideal for entrances with multidirectional traffic.
- Serrated rails scrape more dirt from shoes and provide better slip resistance than the other Thin Line grates.

Installation

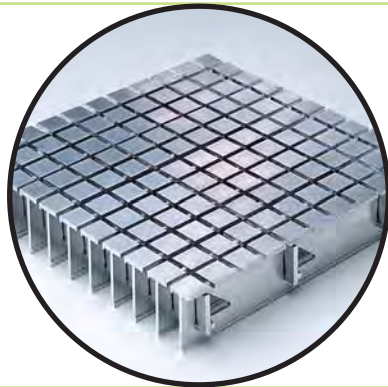
Waffle grates are limited to rectangular shapes. Thin Line grates are installed in the same manner as our GrateDesign® aluminum grates, featured on pages 10 and 11.

Our grates are not slippery, but wet floors are. We highly recommend using UltraSorb® broadloom goods in conjunction with metal grates to absorb moisture. UltraSorb is featured on page 16.

Specifications

Specifications, CAD drawings, recycled content percentages and more detailed product information are available on our web site at www.ardenarch.com. Call us with questions or to request a detailed product binder.

Model G-550
Waffle (shown)
Model G-550AB
Waffle,
Architectural Bronze



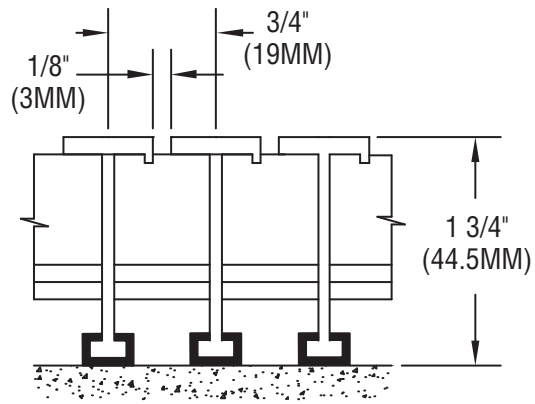
Model G-550P
Plain
Model G-550PAB
Plain,
Architectural Bronze
(shown)



Model G-575
Serrated Waffle
Model G-575P
Serrated (shown)
Model G-575AB
Serrated Waffle,
Architectural Bronze



Model G-575G
Aluminum Oxide
Grit Coated Waffle
Model G-575PG
Aluminum Oxide
Grit Coated, Plain



All Thin Line grates have the same rail height and tread spacing.

Mats and Grates



ScrapesGrate mats and grates maximize dirt and moisture removal by combining tread rails with scraper bars.

Construction

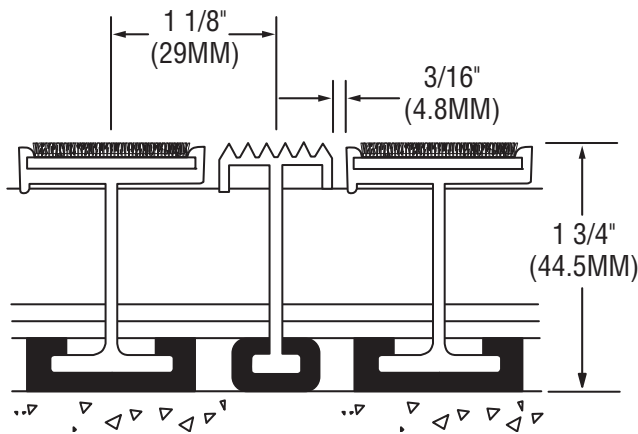
- UltraSorb® or Rugged Scrub® treads alternate with an acrylic scraper bar in the mat and aluminum scraper bar in the grate.
- ScrapesGrate gratings are constructed in the same way as our GrateDesign® aluminum grates featured on pages 10 and 11.
- ScrapesGrate mats are constructed in the same way as our QuietFlex® mats featured on page 15.

Installation

ScrapesGrate mats and grates are installed in the same manner as QuietFlex LDPE hinge mats and GrateDesign aluminum grates.

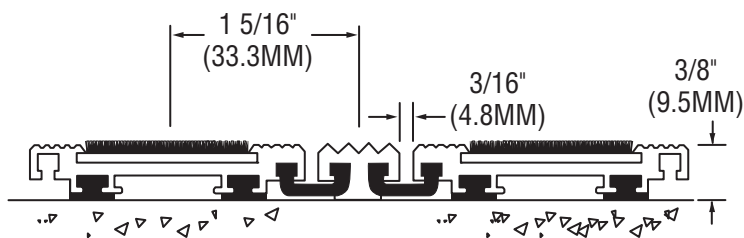
Specifications

Specifications, CAD drawings, recycled content percentages and more detailed product information are available on our web site at www.ardenarch.com. Call us with questions or to request a detailed product binder.



Rigid Grates

Model G-525U UltraSorb
Model G-525RS Rugged Scrub



Roll-up Mats

Model M-675U UltraSorb
Model M-675RS Rugged Scrub

Aluminum Hinge Mats

MAT design™

Aluminum hinge mats are effective in custom-fabricated applications or for simple rectangles.

Construction

- Arden Architectural uses all-aluminum rails with integral hinges. They are stronger and will last longer than tread rails with plastic underchannels, which are not suitable for commercial use.
- The close tolerance of the hinges in our mats minimizes clatter, but the mats are not silent.

Installation

Mats can be installed in a recess with an F-3 frame, with an F-6 frame to butt against thin-set tile, or on the surface with an F-5 attached or floor-mounted F-4 frame.

Specifications

Specifications, CAD drawings, recycled content percentages and more detailed product information are available on our web site at www.ardenarch.com. Call us with questions or to request a detailed product binder.



Model M-600
Carpet

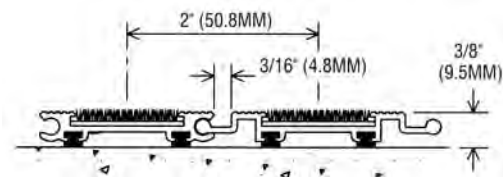
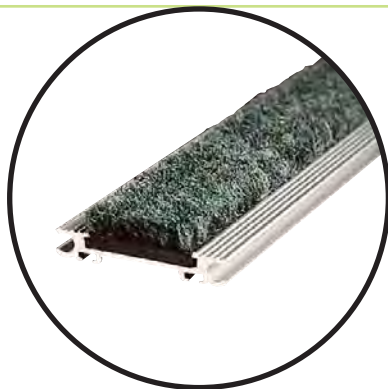
Model M-600U
UltraSorb®

Model M-600RS
Rugged Scrub®

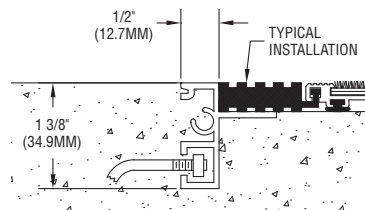
Model M-700
Vinyl

Model M-700RT
Rubber

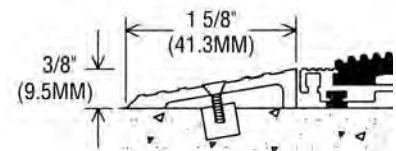
Model M-800
HDPE Abrasive



M-600 Aluminum hinge mat



Frame Type F-3*



Frame Type F-4
Aluminum bevel surface mounting
for permanent installation*

*All frame types are suitable for use with aluminum hinge or low-density polyethylene hinge mats.

Low-Density Polyethylene Hinge Mats



QuietFlex low-density polyethylene mats are quiet and effective.

Construction

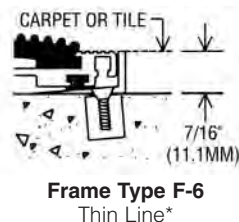
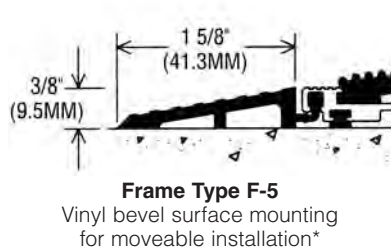
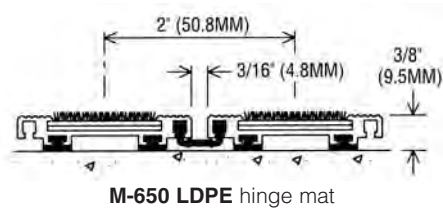
- Only Arden Architectural uses recycled LDPE for its flexible hinge mats.
- LDPE hinges eliminate clatter and don't shrink or crack when exposed to ultraviolet light and temperature changes like vinyl or thermoplastic rubber.
- Our tread rails are all-aluminum, stronger and will last longer than rails with plastic components.

Installation

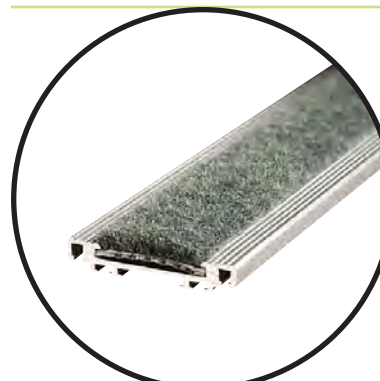
Mats can be installed in a recess with an F-3 frame, with an F-6 frame to butt against thin-set tile, or on the surface with an F-5 attached or floor-mounted F-4 frame.

Specifications

Specifications, CAD drawings, recycled content percentages and more detailed product information are available on our web site at www.ardenarch.com. Call us with questions or to request a detailed product binder.



*All frame types are suitable for use with aluminum hinge or low-density polyethylene hinge mats.



- Model M-650**
Carpet
- Model M-650U**
UltraSorb®
- Model M-650RS**
Rugged Scrub®
- Model M-750**
Vinyl
- Model M-750RT**
Rubber
- Model M-850**
Abrasive Insert



- Model M-950**
Aluminum Abrasive



- Model M-1050**
Serrated Aluminum

Premium Tread Surfaces

Even the best commercial carpet can't stand up to the abuse of high-traffic entrances. That's why we developed two textile treads that look like carpet but work better, wear longer and provide lower life cycle costs.

UltraSorb®

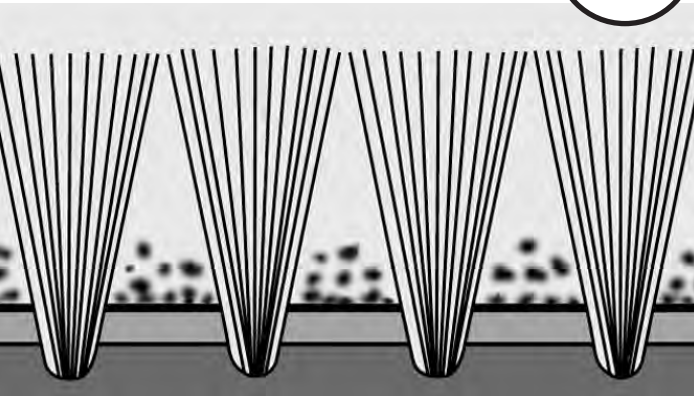
UltraSorb's tetralobal shape and large diameter provide increased strength.



Standard nylon fiber.



Available in matching broadloom goods.



UltraSorb's open, "tufted" weave creates a storage space to catch dirt and also allows dirt to be pulled out easily during cleaning.

UltraSorb is a premium floor covering that has been proved to remove dirt and moisture from shoes three times more effectively than other textiles.

Construction

The tetralobal shape of its fibers and its tufted construction provide superior strength and rigidity, while its open weave increases absorbency. These features enable it to clean shoes and hold up to 1.5 gallons (5.7 liters) of water and 13.4 pounds (6 kg) of dirt per square yard.

Installation

Use UltraSorb in mats and grates, or in broadloom for a continuous surface.

Specifications

Pile Materials: 100% Polyamide; *Fiber Size:* 80 d'tex and 40 d'tex; *Pile Height:* ≈1/4" (±6.9 mm); *Total Height:* ≈3/8" (±9.0 mm); *Pile Density:* 130.603/y² (0.102 g/cm³); *Total Weight:* ±3,120 g/m²; *Backing:* Rubber/vinyl compound; *Coefficient of Friction:* .71; *Fire Rating:* Class 1; *Smoke Generation:* Pass; *Wear Classification:* "Stark"/intensive; *Wear Test:* Accelerated wear test by sim floor machine; *Rolls with Flexible Backing:* Width ≈6'6" (200 cm), Length ≈82' (25 m).



3011 Tawny



3051 Teak



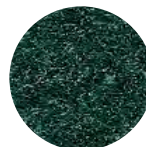
3061 Flannel



3041 Briar



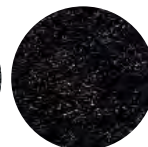
3021 Stormy Blue



3031 Meadow



307 Black



3071 Ink

RUGGED scrub®

Rugged Scrub is an ideal solution for exterior or interior applications.

Construction

Its polypropylene fibers are large, stiff, chisel shaped and widely spaced, giving Rugged Scrub a scrubber-like texture that is perfect for heavy-duty applications. Rugged Scrub does not absorb moisture; so it dries quickly and stands up to all types of weather.

Installation

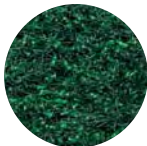
Use Rugged Scrub in mats and grates, or in broadloom for a continuous surface.

Specifications

600 denier, solution-dyed polypropylene, tufted. *Primary Backing:* Double-backed woven polypropylene; *Secondary Backing:* 100 mill vinyl; *Coefficients of Friction:* 0.52 (dry); 0.82 (wet).



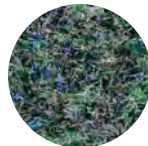
Red



Green



Navy



Teal



Tan



Chocolate Chip



Multi-Color*



Charcoal



Licorice

*Strips only, no broadloom



The scrubber-like texture is effective in heavy-duty applications.



Easy to maintain.



Available in matching broadloom goods.



Color Selections

Vinyl

Use vinyl or rubber in high-traffic, exterior and interior areas where moisture absorbency is not required.

Construction

Extruded vinyl or vulcanized rubber convex shape, continuous serrations.

Specifications

Coefficients of Friction: 0.82 (dry); 0.74 (wet).

Rubber Construction: Extruded vulcanized rubber, convex shape; *Coefficients of Friction:* 0.85 (dry); 0.96 (wet).



Abrasive Insert

Use abrasive insert in interior areas where slip resistance is critical.

Construction

Flexible abrasive grate tape-bonded to a rigid bio-based/ recycled plastic tread insert.

Specifications

Coefficients of Friction: 0.78 (dry); > 1.20 (wet).



Standard Carpet

Use carpet in interior areas where color selection is the primary concern.

We use the highest-quality carpet available for our mats and grates. Carpet, however, will not provide the most effective solution. Consider UltraSorb® or Rugged Scrub® as a superior alternative to reduce life cycle costs.

Construction

17 denier, solution-dyed nylon, woven.

Specifications

Yarn Weight: 28 oz./yd.² (949 g/m²); *Pile Height:* 1/4" (6.0 mm);

Coefficients of Friction: 0.56 (dry); 0.82 (wet). *Fire Rating:* Class 2.



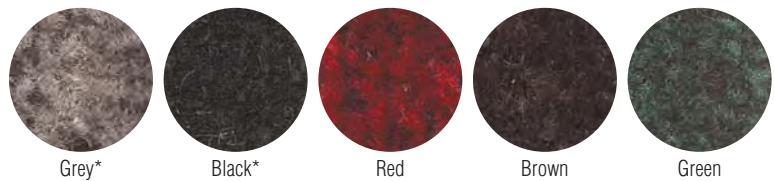
EnvIRONtread®

Product information for EnvIRONtread is found on pages 6 and 7.

Standard color is grey. All other colors carry an additional charge. EnvIRONtread II is only available in grey or black.

Specifications

Coefficient of Friction: 0.65.



*EnvIRONtread II Color Selections

Note: Due to the nature of recycled products, there may be a significant color variation in this product.

Aluminum Abrasive

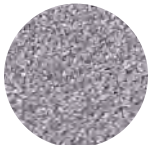
Aluminum abrasive is effective in areas where slip resistance is critical. This tread is not available for MatDesign™ aluminum hinge products.

Construction

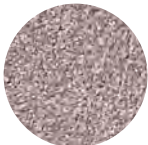
Aluminum-oxide grit, factory-bonded in 2-part epoxy coating.

Specifications

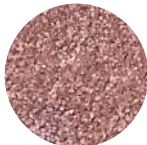
Coefficients of Friction: 1.06 (dry); > 1.20 (wet).



Grey



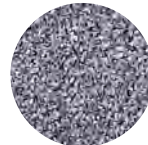
Beige



Rose



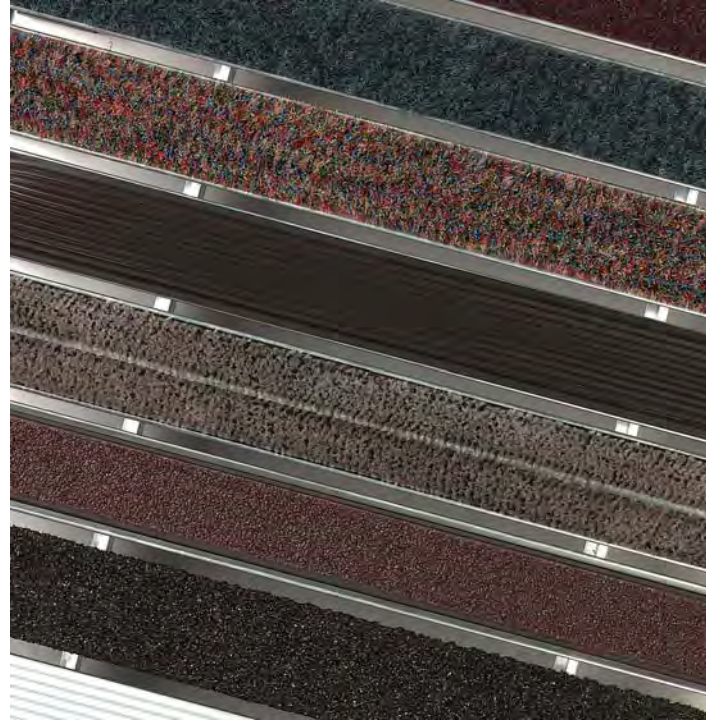
Black



Blue

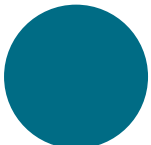


Dark Brown



Color Anodized

Most GrateDesign® and MatDesign products are available in mill finish aluminum and a wide range of anodized colors. Thin Line grates, G-500 grates, M-1050 mats and F-4 frames should not be anodized, as the color will wear off quickly. Clear anodized available, not shown.



Water Blue



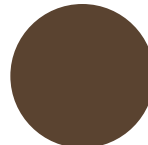
Blue Green



Light Bronze



Brown Red



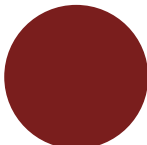
Medium Bronze



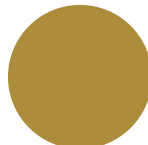
Dark Bronze



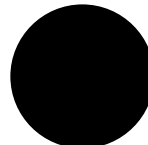
Pale Gold



Wine Red



Medium Gold



Black



Champagne



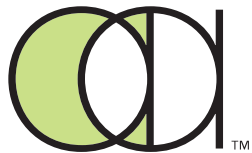
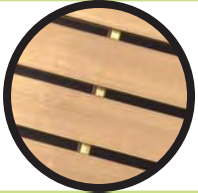
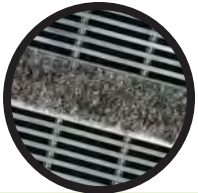
Black Red

Coefficients of Friction for all products were tested as per ASTM C1028-89 and ASTM D-2047-82.



Thin Line grates and types F-1, F-2 and F-6 frames are available in architectural bronze.

Due to printing variations, the colors shown may not be representative of the actual colors. Call us for actual color samples.



Arden Architectural Specialties, Inc.
9300 73rd Avenue North
Brooklyn Park, MN 55428
U.S.A.
Toll-Free: 1.800.521.1826
Tel: +1 763.488.9293
Fax: +1 763.488.9294
E-mail: sales@ardenarch.com
Web Site: www.ardenarch.com

Our Mission

Arden Architectural Specialties, Inc. manufactures high-quality, environmentally friendly architectural specialty products with low life cycle costs, leading the industry in innovation and customer service.

We achieve this mission by designing products that reduce maintenance, increase accessibility and contribute to buildings' designs. We back our products with service and a genuine desire to provide value to our customers. Arden Architectural leads the industry in quality, variety and innovation in entrance flooring systems. We carry these same values throughout our other product lines, Wallwear® wall protection, stair treads and nosings.

Warranty

Arden Architectural Specialties, Inc. warrants to its purchasers, for a period of two years on standard products and five years on premium products from date of shipment, that any entrance flooring system will be free of defects in material or workmanship. The liability of Arden Architectural Specialties, Inc. is strictly limited to repair or replacement of units that, in our opinion, were properly installed and subsequently found to be defective. No claims for consequential damages of any nature will be allowed. This warranty is in lieu of all other warranties, expressed or implied.

Arden Architectural Specialties, Inc., reserves the right to make product changes or withdraw any color or design without notice.

© 2009 Arden Architectural Specialties, Inc.
Manufactured under US patent #4,637,752. Other patents pending.