

SPECIFICATIONS:

① **COVER:** 11 GA ALUM COVER STIFFENED TO WITHSTAND A LIVE LOAD OF 40PSF WITH A MAX DEFLECTION OF 1/150 OF THE SPAN

② **LINER:** 18 GA ALUM

③ **CURB AND COUNTERFLASH W/ EZ TAB:**

11 GA ALUM

4 **FINISH:** MILL FINISH

⑤ **SPRING/HINGE ASSEMBLY:** ZINC PLATED STEEL TAMPER-PROOF HINGE CONTAINED WITHIN SPRING/HINGE ASSEMBLY. TELESCOPIC TUBES CONTAIN COIL STEEL COMPRESSION SPRINGS FOR LIFT ASSISTANCE

⑥ **HOLD OPEN ARM:** LOCKS COVER IN FULLY OPEN POSITION - ZINC PLATED STEEL WITH RED VINYL GRIP HANDLE PULL RELEASE

⑦ **LATCH:** SINGLE POINT LATCH SLAM LATCH HOLDS COVER CLOSED AGAINST 20 PSF WIND UPLIFT. INTERNAL AND EXTERNAL TURN HANDLES WITH PADLOCK HASPS

PROPRIETARY AND CONFIDENTIAL: THE INFORMATION CONTAINED IN THIS DRAWING IS THE SOLE PROPERTY OF BABCOCK-DAVIS. ANY REPRODUCTION IN PART OR AS A WHOLE WITHOUT THE WRITTEN PERMISSION OF BABCOCK-DAVIS IS PROHIBITED.

⑧ **INSULATION:**

1" POLYSTYRENE (R4) IN COVER, AND 1" FIBERBOARD (R2.8) IN CURB


⑨ **GASKET:** ADHESIVE BACKED EPDM RUBBER EXTRUSION

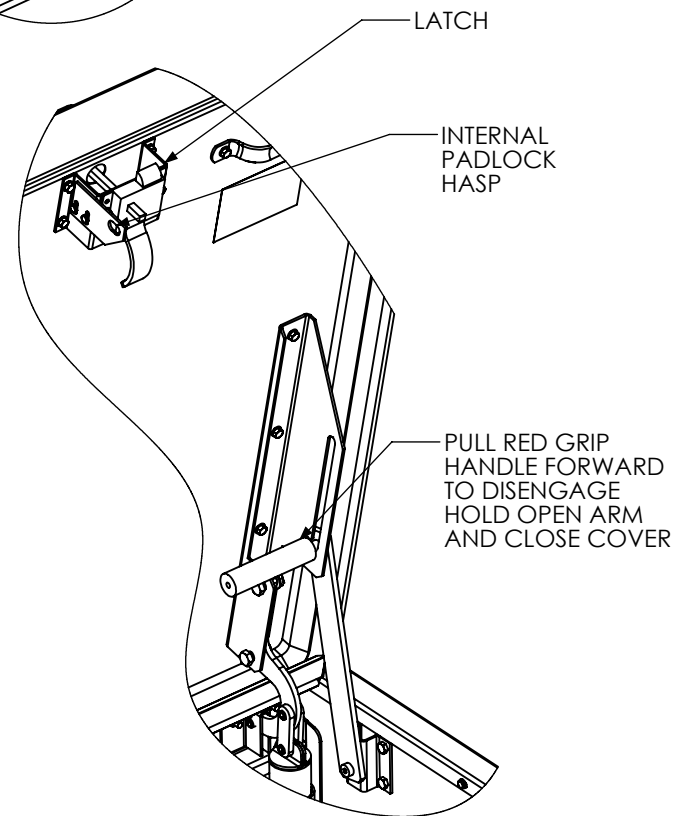
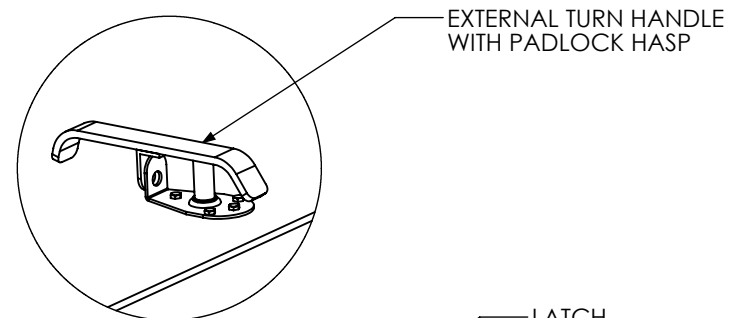
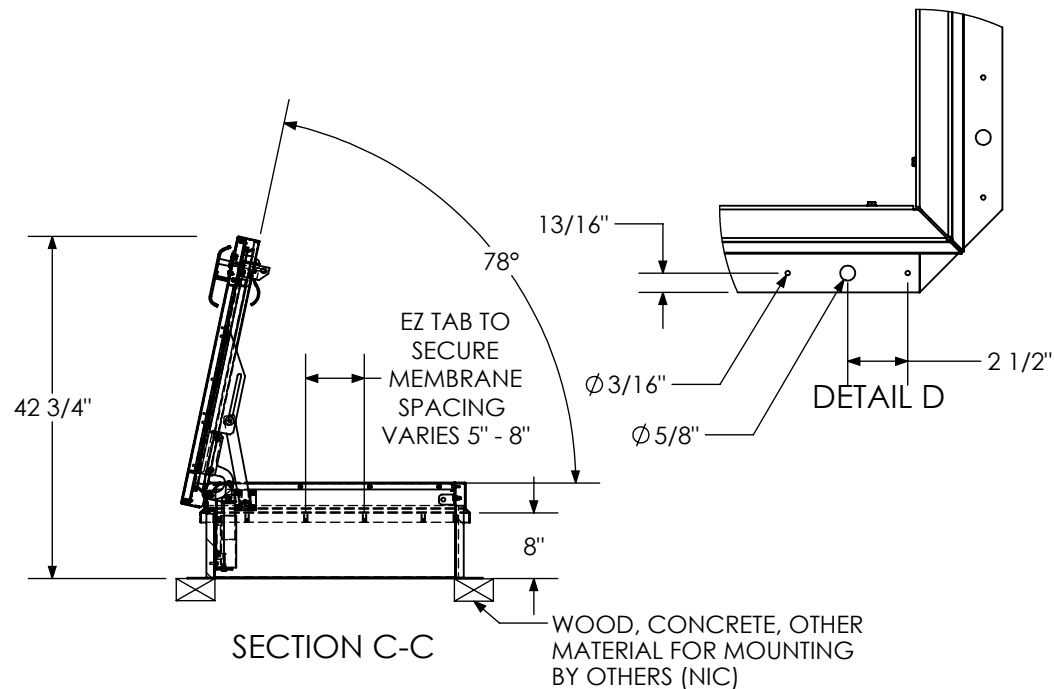
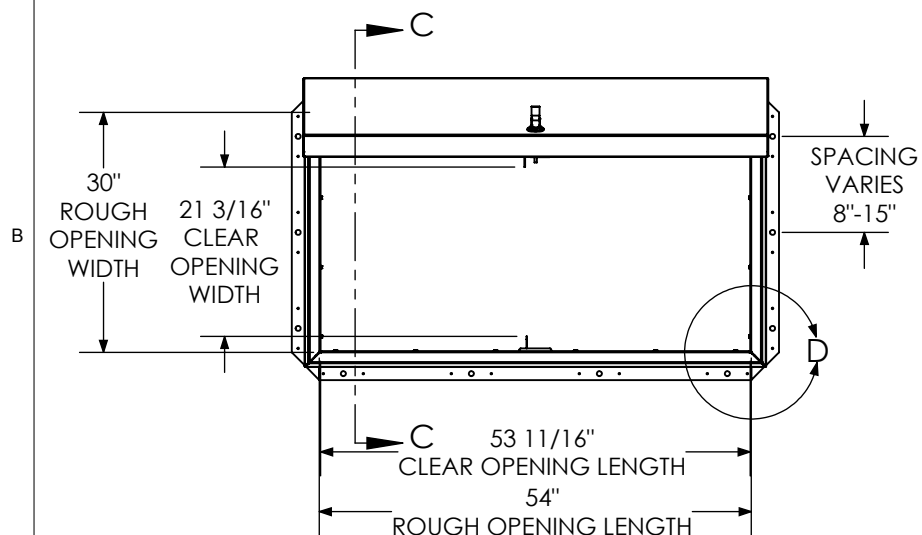
⑩ **SIZING:** WIDTH X LENGTH DIMENSIONS ARE MEASURED INSIDE CURB TO INSIDE CURB WHERE THE WIDTH IS HINGE TO LATCH AND LENGTH IS HINGED SIDE WITH SPRINGS

ROOF HATCH SIZE 30" (WIDTH) x 54" (LENGTH)

CLEAR OPENING 21.15" (WIDTH) x 52" (LENGTH)

ROUGH OPENING 30" (WIDTH) x 54" (LENGTH)

PROJECT:					
ARCHITECT:					
CONTRACTOR:					
QTY:					
PART#:		BRHPA30X54S1T			
<div><p>Babcock-Davis <i>Always right there.</i> 9300 73rd Avenue North Brooklyn Park, MN 55428</p></div>		TITLE: Roof Hatch, Personnel Access, 30x54, Sngl Dr, Alum, Mill, Sngl Wall Curb,			
	NAME	DATE	SIZE	DWG. NO.	REV
DRAWN	DWO	9/11/12	A	BRHPA30X54S1T	A
RELEASED	-	-	WEIGHT: 108.7		SHEET 1 OF 2



HARDWARE DETAILS

Babcock-Davis
Always right there.
 9300 73rd Avenue North
 Brooklyn Park, MN 55428

TITLE: Roof Hatch, Personnel Access,
 30x54, Sngl Dr,
 Alum, Mill, Sngl Wall Curb,

	NAME	DATE	SIZE	DWG. NO.	REV
DRAWN	DWO	9/11/12	A	BRHPA30X54S1T	A
RELEASED	-	-	WEIGHT: 108.7	SHEET 2 OF 2	