


SPECIFICATIONS:

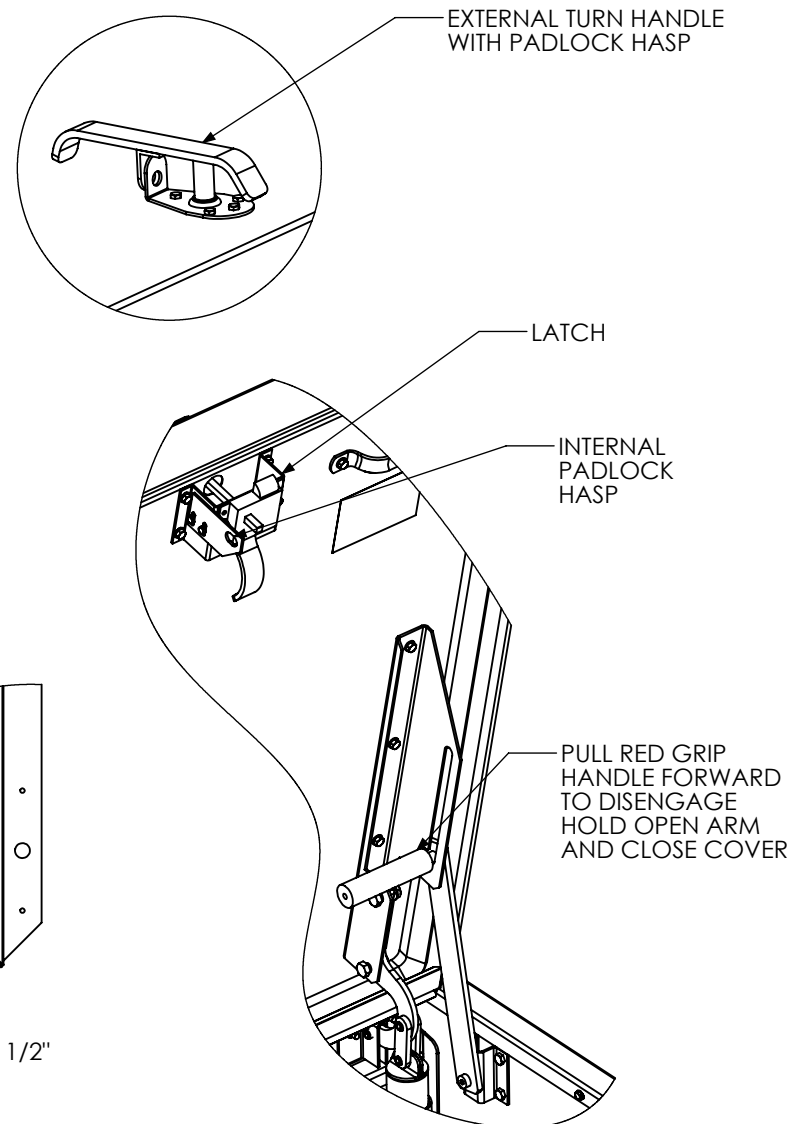
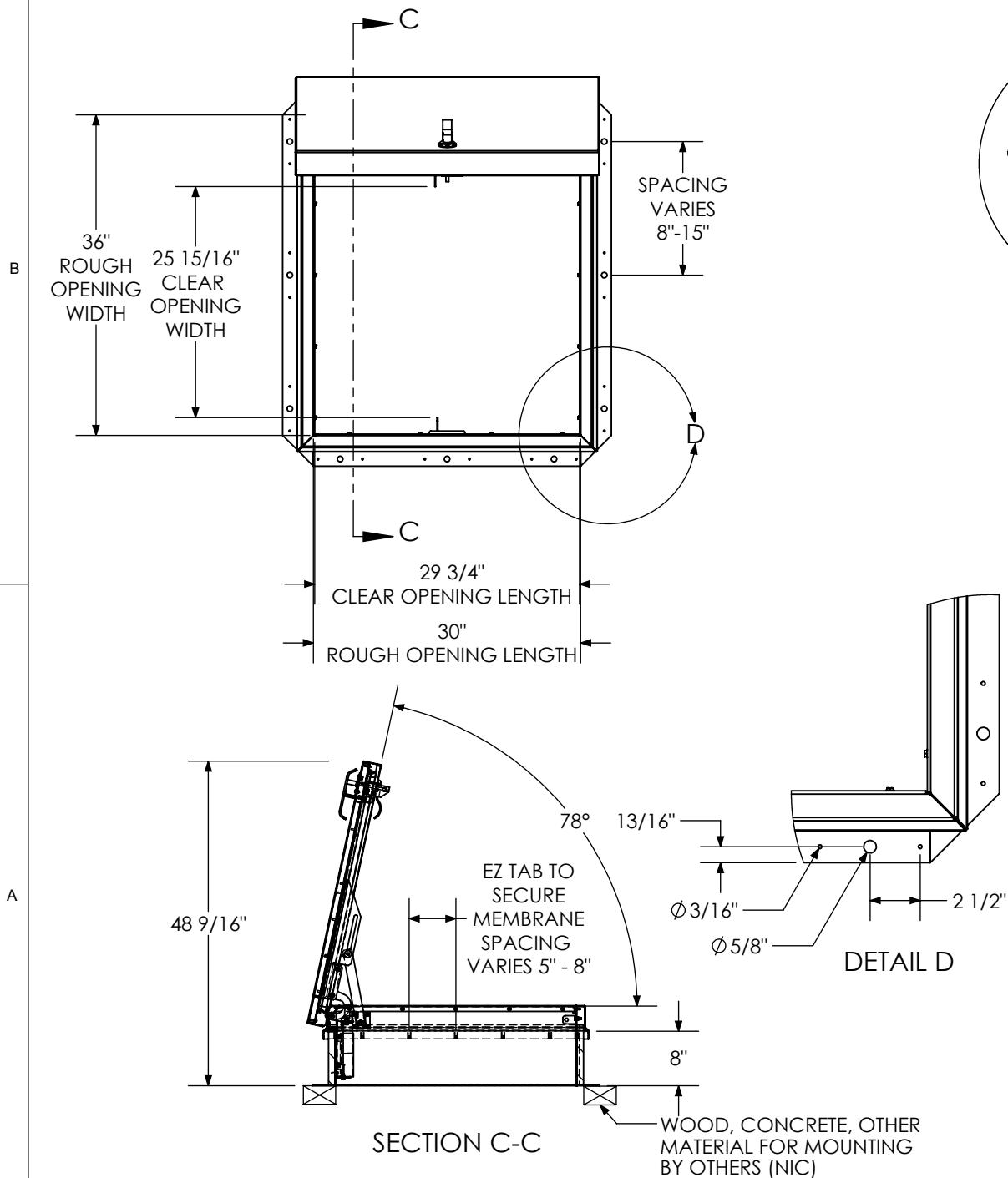
- ① **COVER:** 14 GA GALV STEEL COVER STIFFENED TO WITHSTAND A LIVE LOAD OF 40PSF WITH A MAX DEFLECTION OF 1/150 OF THE SPAN
- ② **LINER:** 22 GA GALV STEEL
- ③ **CURB AND COUNTERFLASH W/ EZ TAB:**
14 GA GALV STEEL
- 4 **FINISH:** RED OXIDE POWDER COAT
- ⑤ **SPRING/HINGE ASSEMBLY:** ZINC PLATED STEEL TAMPER-PROOF HINGE CONTAINED WITHIN SPRING/HINGE ASSEMBLY. TELESCOPIC TUBES CONTAIN COIL STEEL COMPRESSION SPRINGS FOR LIFT ASSISTANCE
- ⑥ **HOLD OPEN ARM:** LOCKS COVER IN FULLY OPEN POSITION - ZINC PLATED STEEL WITH RED VINYL GRIP HANDLE PULL RELEASE
- ⑦ **LATCH:** SINGLE POINT LATCH SLAM LATCH HOLDS COVER CLOSED AGAINST 20 PSF WIND UPLIFT. INTERNAL AND EXTERNAL TURN HANDLES WITH PADLOCK HASPS

- ⑧ **INSULATION:**
1" POLYSTYRENE (R4) IN COVER, AND 1" FIBERBOARD (R2.8) IN CURB
- ⑨ **GASKET:** ADHESIVE BACKED EPDM RUBBER EXTRUSION
- 10 **SIZING:** WIDTH X LENGTH DIMENSIONS ARE MEASURED INSIDE CURB TO INSIDE CURB WHERE THE WIDTH IS HINGE TO LATCH AND LENGTH IS HINGED SIDE WITH SPRINGS


ROOF HATCH SIZE 36" (WIDTH) x 30" (LENGTH)
CLEAR OPENING 25.9" (WIDTH) x 28" (LENGTH)
ROUGH OPENING 36" (WIDTH) x 30" (LENGTH)

PROPRIETARY AND CONFIDENTIAL: THE INFORMATION CONTAINED IN THIS DRAWING IS THE SOLE PROPERTY OF BABCOCK-DAVIS. ANY REPRODUCTION IN PART OR AS A WHOLE WITHOUT THE WRITTEN PERMISSION OF BABCOCK-DAVIS IS PROHIBITED.

PROJECT:				
ARCHITECT:				
CONTRACTOR:				
QTY:				
PART#:		BRHPG36X30S1T		
 9300 73rd Avenue North Brooklyn Park, MN 55428		TITLE: Roof Hatch, Personnel Access, 36x30, Sngl Dr, Galvn Steel, Red Oxide Pwd, Sngl Wall Curb,		
	NAME	DATE	SIZE	DWG. NO.
DRAWN	DWO	9/7/2012	A	BRHPG36X30S1T
RELEASED	-	-	WEIGHT: 202.1	SHEET 1 OF 2



HARDWARE DETAILS

 <p>Babcock-Davis Always right there. 9300 73rd Avenue North Brooklyn Park, MN 55428</p>				TITLE: Roof Hatch, Personnel Access, 36x30, Sngl Dr, Galvn Steel, Red Oxide Pwd, Sngl Wall Curb,		
	NAME	DATE	SIZE	DWG. NO.		REV
DRAWN	DWO	9/7/2012	A	BRHPG36X30S1T		A
RELEASED	-	-		WEIGHT: 202.1		SHEET 2 OF 2