



# G-550P ALUMINUM PLAIN DETAIL

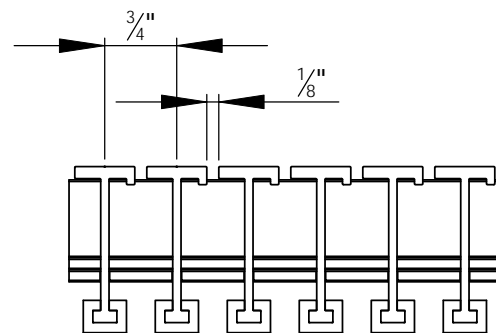
PLAIN THIN LINE GRATES HAVE CONTINUOUS I-BEAM TREAD RAILS AND CAN BE FABRICATED WITH CURVES AND ANGLES. CONSTRUCTED WITH STUDY KEYLOCKS EVERY THREE INCHES, THIN LINE GRATES CAN STAND UP TO ALMOST ANY TRAFFIC.

## DETAIL NOTES:

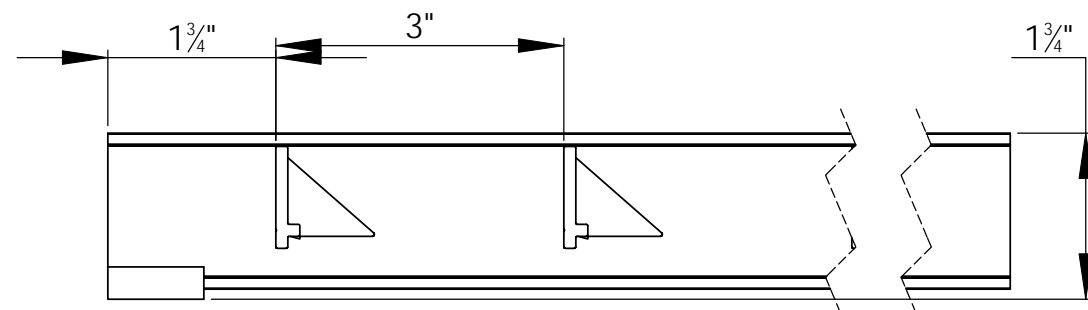
- 1-TREAD RAILS MUST RUN PERPENDICULAR TO TRAFFIC DIRECTION.
- 2-TRAFFIC DIRECTION DIMENSION CAN ONLY BE CHANGED IN 3/4" (19.1MM) INCREMENTS UNLESS ALUMINUM FILLER IS ATTACHED TO THE FRAME.
- 3-GRATE DIMENSIONS ALLOW FOR CLEARANCE BETWEEN GRATE SECTIONS AND FRAME IN THE WIDTH DIMENSION.

## SPECIFICATIONS:


GRATEDesign MODEL G-550P HAS OUR THIN LINE RAIL THAT IS MADE WITH 6063-T52 ALLOY RAILS AND ARE 1-3/4" (44.5MM) DEEP AND, SPACED 3/4" (19.1MM) ON CENTER. WITH KEYLOCKS SPACED 3" (76.2MM) ON CENTER. FRAMES USED WITH THE G-550P ARE: TYPE F-1LEVEL BED; TYPE F-LANG LARGE ANGLE; TYPE F-2 DEEP PIT; TYPE F-2T THIN SLAB FRAMES WHICH ARE MADE OF ALUMINUM.



WIDTH VIEW



LENGTH VIEW

 Always right there.	 Arden Architectural Specialties, Inc. 9300 73rd Avenue North Brooklyn Park, MN 55428
JOB REF.	
MODEL NO. <b>G-550P</b>	
RELEASED DATE	1/5/2011 SHEET 1 OF 1