

FRONT ELEVATION
NOT TO SCALE

LISTINGS

1 1/2 HR. "B" LABEL

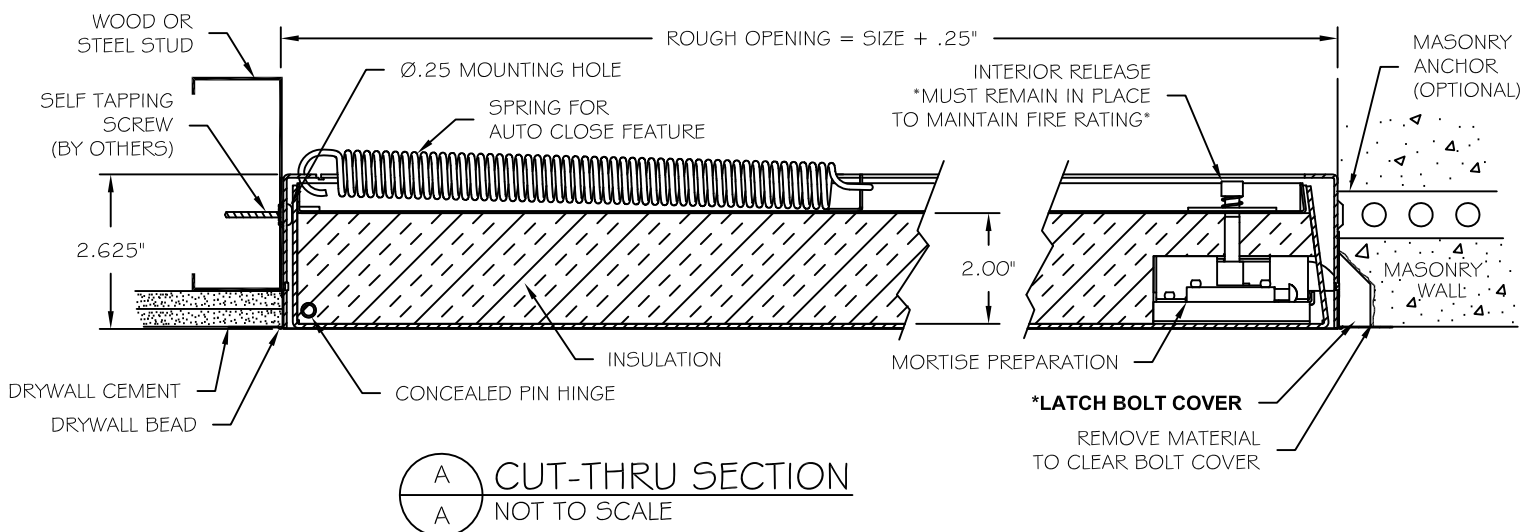


SPECIFICATIONS

- 16 GAUGE COLD ROLLED STEEL FRAME
- 14 GAUGE COLD ROLLED STEEL DOOR
- 2" THICK FIRE RATED INSULATION, 8 R VALUE
- 22 GAUGE GALVANIZED STEEL DRYWALL BEAD
- CONCEALED PIN HINGE
- SPRING DOOR CLOSURE
- PREPARATION FOR 1.125" MORTISE CYLINDER (CYLINDER PROVIDED BY OTHERS OR FACTORY)
- FRAMES PROVIDED WITH .25" MOUNTING HOLES
- GRAY BAKED ON POWDER COAT FINISH
- INTERIOR RELEASE MECHANISM

OPTIONS

- ☐ GALVANIZED BONDERIZED STEEL
- ☐ #4 STAINLESS STEEL WITH STAINLESS STEEL CONCEALED PIN HINGE
- ☐ PREPARATION FOR HEAVY DUTY DETENTION DEADBOLT LOCK (LOCK PROVIDED BY OTHERS OR FACTORY BEFORE MANUFACTURE)
- ☐ STEEL FLUSH CONTINUOUS PIANO HINGE
- ☐ STAINLESS STEEL CONTINUOUS PIANO HINGE (AVAILABLE ON STAINLESS STEEL PANELS ONLY)



Standard Features:

Door: 14 gauge cold rolled steel
Frame: 16 gauge cold rolled steel with 22 gauge galvanized drywall bead
Hinge: Concealed pin hinge
Optional: Flush continuous piano hinge
Latch: Mortise cylinder preparation (cylinder provided by factory or by others)
Finish: Gray baked on powder coat
Optional: galvanized bonderized or stainless steel with #4 satin polish finish
Insulation: 2" thickness fire rated mineral fiber, 8 R value
Other: Interior release and spring(s) for auto-close feature.

Specifications:

Frame shall be 16 gauge cold rolled steel with 22 gauge galvanized drywall bead. Door shall be fabricated from 14 gauge cold rolled steel, insulated sandwich type construction. Door shall be self-latching with an interior release and spring(s) for auto-close feature. Hinge shall be concealed pin type. Latch(es) shall be prepared to receive 1 1/8" mortise cylinder - cylinder provided by factory or others (optional: heavy duty detention lock provided by factory or others, before manufacturing process). This assembly shall carry a 1 1/2 hour UL "B" label for walls (250 degrees maximum temperature rise, 30 minutes). Finish shall be gray baked on powder coat (optional: galvanized bonderized steel or stainless steel with #4 satin polish finish).

Installation shall be in accordance with manufacturers instructions. Manufacturer shall guarantee against defects in material and workmanship for a period of one year.

Standard Sizes:

Std Sizes (in)	Std Sizes (mm)	Weight/Latches	Std Sizes (in)	Std Sizes (mm)	Weight/Latches
08x08	203x203	5/1	22x30	559x762	23/1
10x10	254x254	7/1	22x36	559x914	29/2
12x12	305x305	9/1	24x24	610x610	21/1
12x18	305x457	13/1	24x30	610x762	23/1
12x24	305x610	14/1	24x36	610x914	29/2
14x14	356x356	13/1	24x48	610x1219	42/2
16x16	406x406	12/1	30x30	762x762	29/1
18x18	457x457	14/1	32x32	813x813	35/1
18x24	457x610	19/1	36x36	914x914	40/2
20x30	508x762	21/1	36x48	914x1219	50/2
22x22	559x559	20/1			

All units are hinged on the second dimension (height). Rough opening is size plus 1/4".
These panels are designed for use in wall applications only.
Minimum height with detention lock is 12" high.