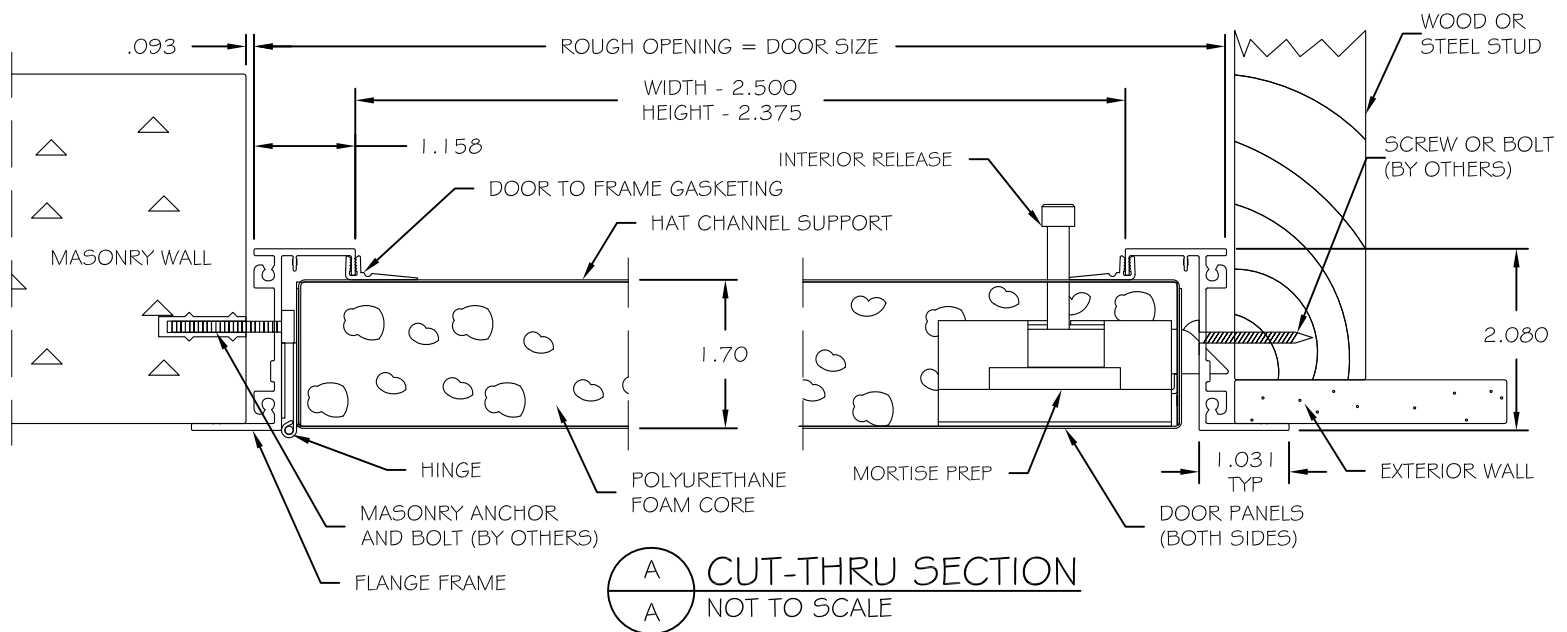


## SPECIFICATIONS

- .080 6063-T5 EXTRUDED ALUMINUM EXPOSED FLANGE
- 24 GA. GALVANNEALED STEEL DOOR PANELS
- FOAM INSULATION 2-1/4 LB DENSITY, 11 R VALUE
- STAINLESS STEEL CONTINUOUS PIANO HINGE
- COEXTRUDED PVC LEAF GASKET
- MILL FINISH (PAINT GRIP FINISH ON DOOR FACE PANEL)
- (1) MORTISE CYLINDER PREPARATION (CYLINDER PROVIDED BY FACTORY OR BY OTHERS)
- INTERIOR RELEASE MECHANISM FOR MORTISE CYLINDER PREPARATION
- ACCESS DOOR ASSEMBLY WILL BE FABRICATED 1/4" UNDER SPECIFIED SIZE

## FRONT ELEVATION

NOT TO SCALE



Standard Features:

|                |  |
|----------------|--|
| Door:          | 24 gauge galvanized steel  |
| Flanged Frame: | 6063-T5 extruded aluminum  |
| Hinge:         | Stainless steel continuous piano hinge                                   |
| Latch:         | Mortise cylinder preparation (cylinder provided by factory or by others) |
| Finish:        | Mill (Paint grip finish on door face panel)                              |
| Gasket:        | Coextruded PVC leaf style  |
| Insulation:    | Closed cell rigid polyurethane foam                                      |

Specifications:

Frame shall be Type 6063-T5 extruded aluminum. Door shall be fabricated with two sheets 24 gauge galvanized steel and closed cell rigid polyurethane foam core. Latch shall be a preparation to receive a 1 1/8" mortise cylinder (cylinder provided by factory or by others) with interior release mechanism. Hinge shall be a stainless steel continuous piano hinge. This assembly shall be equipped with coextruded PVC leaf gasket applied to all door stops to ensure weather tightness. Finish shall be mill (paint grip finish on door face panel). Access door assembly will be fabricated 1/4" under specified size.

Installation shall be in accordance with manufacturers instructions. Manufacturer shall guarantee against defects in material and workmanship for a period of one year.

Standard Sizes:

Note: Custom sizes available in 1/16" increments in height and/or width

| Standard Sizes (in) | Std Sizes (mm) | # of Latches |
|---------------------|----------------|--------------|
| 12x12               | 305x305        | 1            |
| 12x24               | 305x610        | 1            |
| 18x18               | 457x457        | 1            |
| 22x30               | 559x762        | 1            |
| 22x36               | 559x914        | 1            |
| 24x24               | 610x610        | 1            |
| 24x36               | 610x914        | 1            |
| 24x48*              | 610x1219       | 1            |
| 36x36               | 914x914        | 1            |
| 36x48*              | 914x1219       | 1            |

All units are hinged on the second dimension (height). Rough opening equals door size.

\*Non-stocked items, longer lead time may apply.