

FRONT ELEVATION  
NOT TO SCALE

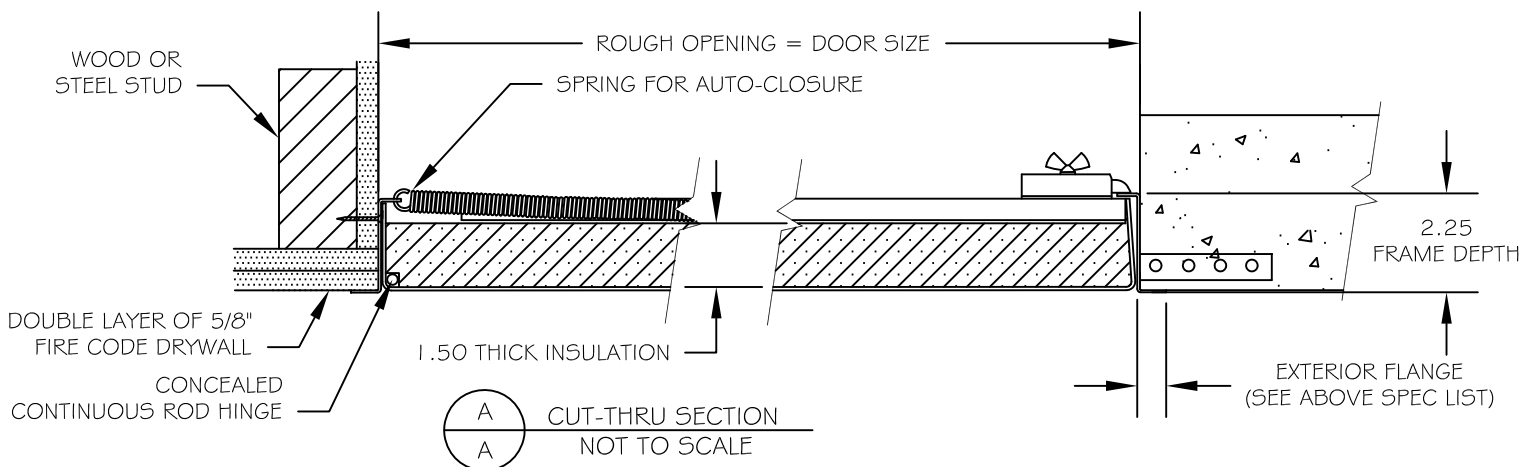


SPECIFICATIONS

- 16 GA GALVANIZED STEEL FRAME ON SIZES UP TO AND INCLUDING 30X48
- 14 GA GALVANIZED STEEL FRAME ON SIZES GREATER THAN 30X48
- 18 GA GALVANIZED STEEL DOOR AND 22 GA LINER
- 1.50" THK FIRE RATED INSULATION, 6.3 R VALUE
- WHITE ELECTROSTATICALLY APPLIED RUST INHIBITIVE PRIME COAT
- CONCEALED CONTINUOUS ROD HINGE (CONTINUOUS PIANO HINGE IS STANDARD ON ALL PANELS 48" OR GREATER IN HEIGHT FOR VERTICAL INSTALLATIONS)
- SELF CLOSING, SELF LATCHING FROM OPEN POSITION OF 90°
- STANDARD LATCH IS 1/4" ALLEN KEY
- INTERIOR LATCH RELEASE MECHANISM (STANDARD ON DOORS 16X16 AND ABOVE. UNDER 16X16 INTERIOR RELEASE INCLUDED BY REQUEST ONLY)
- EXTERIOR FLANGE:
  - ~ 7/8" ON SIZES UP TO AND INCLUDING 36X36
  - ~ 1-1/4" ON SIZES GREATER THAN 36X36
- WARNOCK HERSEY LISTED FOR A 2 HOUR WALL OR CEILING APPLICATION
  - ~ TEMP RISE MAX 250°F @ 30 MINS / 450°F @ 60 MINS
  - ~ NFPA-252 ~ ASTM-E-152/2074 ~ ANSI/NFPA 80
- \*\* ACCESS DOOR ASSEMBLY SHALL BE FABRICATED 1/4" UNDER SPECIFIED SIZE
- \*\* WHEN ORDERING, PLEASE SPECIFY WALL OR CEILING APPLICATION

OPTIONS

- STAINLESS STEEL W/#4 SATIN POLISH FINISH
- PREPARATION FOR 1.125" MORTISE CYLINDER (CYLINDER PROVIDED BY OTHERS OR BY FACTORY)
- 3 HOUR RATING FOR HORIZONTAL OR VERTICAL INSTALLATION (DOOR WILL COME WITH 2 1/2" INSULATION, 10.5 R VALUE)



## Model FRD Size Chart

Single leaf construction for walls and ceilings

### Ceiling size chart:

| Rough Opening Size W x H<br>(hinged on second dimension) |             |         |              |              |
|--|-------------|---------|--------------|--------------|
| Inches   | Metric (mm) | Latches | Weight (lbs) | Weight (kgs) |
| 24 x 48  | 610 x 1219  | 2       | 55.00        | 24.94        |
| 30 x 30  | 762 x 762   | 1       | 43.00        | 19.50        |
| 30 x 36  | 762 x 914   | 2       | 51.00        | 23.13        |
| 30 x 48  | 762 x 1219  | 2       | 66.00        | 29.93        |
| 32 x 32  | 813 x 813   | 2       | 49.00        | 22.22        |
| 36 x 36  | 914 x 914   | 2       | 60.00        | 27.21        |

### Wall ONLY size chart:

| Rough Opening Size W x H<br>(hinged on second dimension) |             |         |              |              |
|--|-------------|---------|--------------|--------------|
| Inches   | Metric (mm) | Latches | Weight (lbs) | Weight (kgs) |
| 36 x 60  | 914 x 1524  | 2       | 97.00        | 43.99        |
| 40 x 60  | 1016 x 1524 | 2       | 105.00       | 47.62        |
| 48 x 60  | 1219 x 1524 | 2       | 122.00       | 55.33        |

Clear Opening = Width - 3" (77 mm)

Height - 1-1/2" (39 mm)

NOTE: Width of door cannot exceed 48" (1219 mm) in a single leaf door.