

FRONT ELEVATION  
NOT TO SCALE

## SPECIFICATIONS

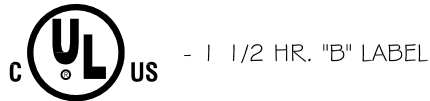
- 16 GAUGE COLD ROLLED STEEL FRAME
- 20 GAUGE COLD ROLLED STEEL DOOR
- 2" THICK FIRE RATED INSULATION, 8 R VALUE
- 22 GA GALVANIZED STEEL DRYWALL BEAD
- GRAY BAKED ON POWDER COAT FINISH
- CONCEALED PIN HINGE
- SPRING DOOR CLOSURE
- FRAMES PROVIDED WITH .25" MOUNTING HOLES
- FLUSH KEY / METAL KNURLED KNOB OPERATED LOCK
- INTERIOR RELEASE MECHANISM

## OPTIONS

- GALVANIZED BONDERIZED STEEL
- STAINLESS STEEL WITH #4 SATIN POLISH FINISH
- STAINLESS STEEL CONTINUOUS PIANO HINGE WITH STAINLESS STEEL PIN (AVAILABLE ON SST PANELS ONLY)
- FLUSH CONTINUOUS PIANO HINGE
- PREPARATION FOR 1.125" MORTISE CYLINDER (CYLINDER PROVIDED BY OTHERS OR BY FACTORY)

## LISTINGS

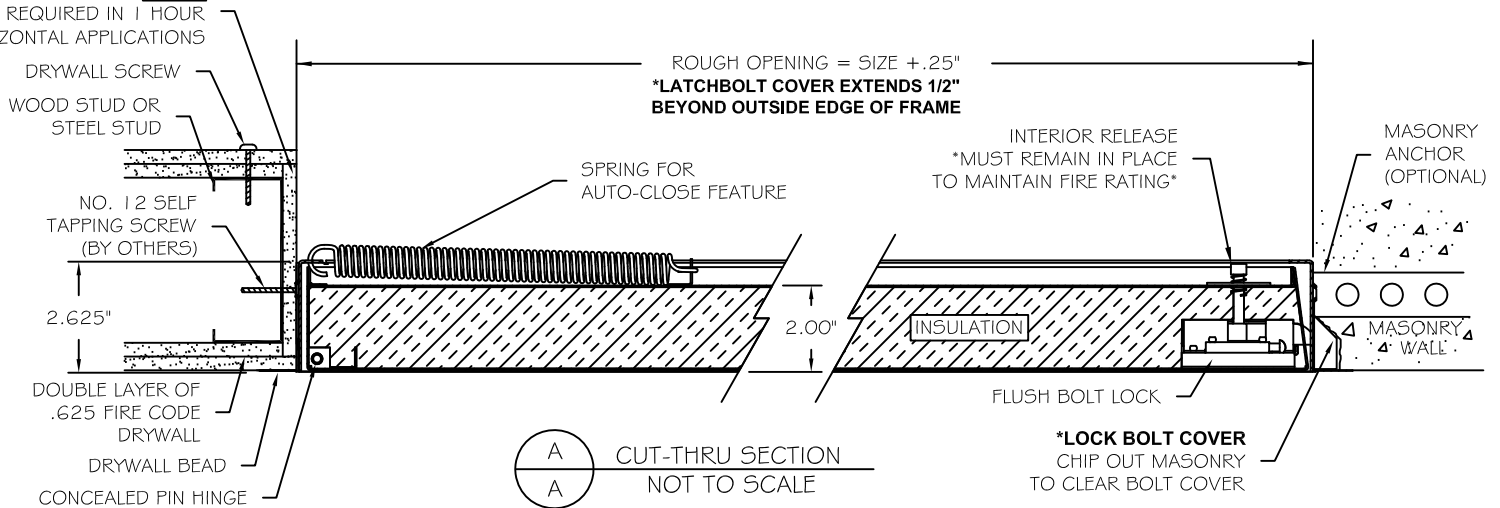
### VERTICAL APPLICATIONS



### HORIZONTAL APPLICATIONS



\*\*WRAPPING OF STUD IS NOT REQUIRED IN 1 HOUR HORIZONTAL APPLICATIONS



A  
A  
CUT-THRU SECTION  
NOT TO SCALE

Standard Features:

- Door: 20 gauge (.912mm thick) cold rolled steel
- Frame: 16 gauge (1.52mm thick) cold rolled steel with 22 gauge galvanized drywall bead
- Hinge: Concealed pin hinge  
Optional: Flush continuous piano hinge
- Latch: Knurled knob/Key operated latch bolt  
Optional: Mortise cylinder preparation (cylinder provided by factory or by others)
- Finish: Gray baked on powder coat  
Optional: galvanized bonderized or stainless steel with #4 satin polish finish
- Insulation: 2" thickness fire rated mineral fiber, 8 R value
- Other: Self-closing with interior release mechanism

Specifications:

Frame shall be 16 gauge cold rolled steel with 22 gauge galvanized drywall bead. Door shall be fabricated from 20 gauge cold rolled steel, insulated sandwich type construction. Door shall be self-latching with automatic closer and interior latch release mechanism. Hinge shall be concealed pin type. Latch(es) shall be knurled knob/key operated latch bolt (optional: preparation to receive 1 1/8" mortise cylinder - cylinder provided by factory or others). This assembly shall carry a 1 1/2 hour UL "B" label for walls (250 degrees maximum temperature rise, 30 minutes) and carry a 3 hour Warnock Hersey label for ceilings rated 3 hours or less. Finish shall be gray baked on powder coat (optional: galvanized bonderized steel or stainless steel with #4 satin polish finish).

Installation shall be in accordance with manufacturers instructions. Manufacturer shall guarantee against defects in material and workmanship for a period of one year.

Standard Sizes:

Std Sizes (in)	Std Sizes (mm)	Weight/Latches	Std Sizes (in)	Std Sizes (mm)	Weight/Latches
08x08	203x203	5/1	22x30	559x762	23/1
10x10	254x254	7/1	22x36	559x914	29/2
12x12	305x305	9/1	24x24	610x610	21/1
12x18	305x457	13/1	24x30	610x762	23/1
12x24	305x610	14/1	24x36	610x914	29/2
14x14	356x356	13/1	24x48*	610x1219	42/2
16x16	406x406	12/1	30x30*	762x762	29/1
18x18	457x457	14/1	32x32*	813x813	35/1
18x24	457x610	19/1	36x36*	914x914	40/2
20x30	508x762	21/1	36x48*	914x1219	50/2
22x22	559x559	20/1			

All units are hinged on the second dimension (height). Rough opening is size plus 1/4".

Minimum height with detention lock is 12" high.

\*Exceeds maximum size to carry a Warnock Hersey label for ceilings.