

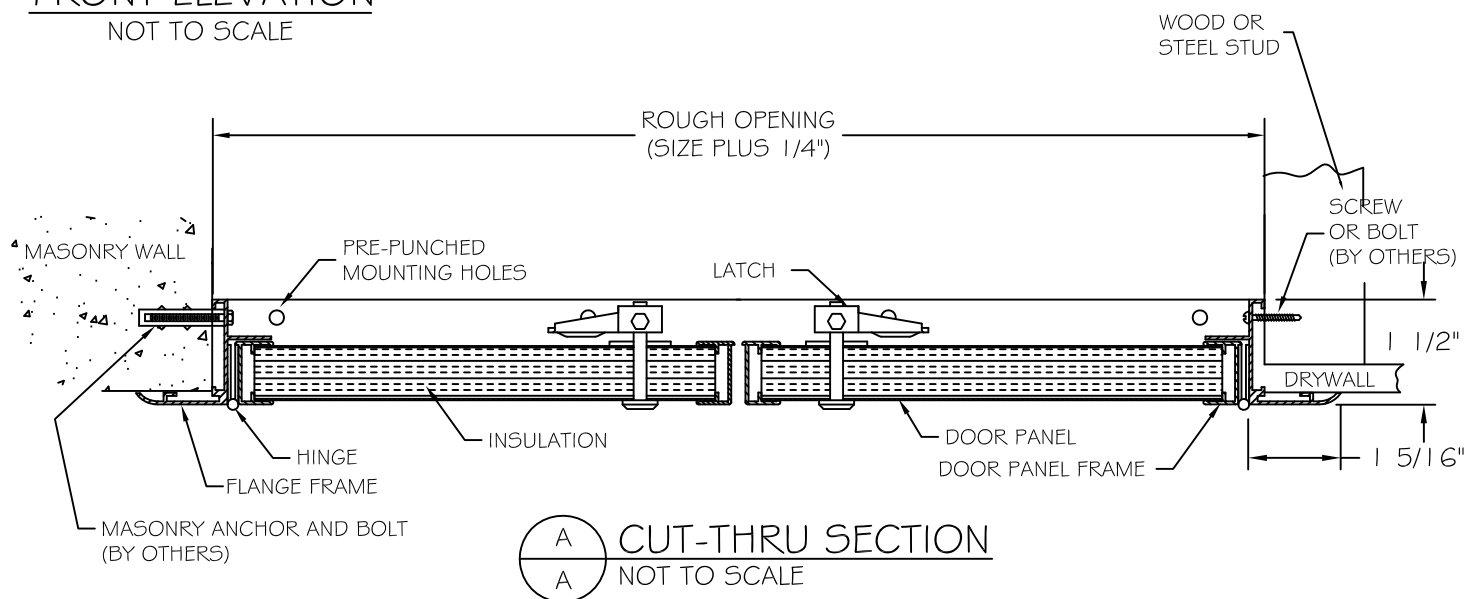
SPECIFICATIONS

- .045-6063-T5 EXTRUDED ALUMINUM DOOR FRAME
- 24 GA. PRE-FINISHED EMBOSSED GALV. STEEL DOOR
- 3/4" EXTRUDED POLYSTYRENE INSULATION, 3.8 R VALUE
- .080-6063-T5 EXTRUDED ALUMINUM EXPOSED FLANGE
- CONTINUOUS ALUMINUM PIANO HINGE
- CLEAR ANODIZED FINISH ON EXTRUDED ALUMINUM FRAMES
- FLUSH, SCREWDRIVER OPERATED CAM LATCH

OPTIONS

- KEY OPERATED CAM LOCK
- NEOPRENE GASKETING
- 18 GA ALUMINUM PANEL INSERT

FRONT ELEVATION
NOT TO SCALE



CUT-THRU SECTION
NOT TO SCALE

Standard Features:

Door (2) : 24 ga pre-finished embossed galvanized steel
Optional: .063 mill finish aluminum panel insert
Door Panel Frame (2) : 6063-T5 extruded aluminum
Flanged Frame: .045 6063-T5 extruded aluminum with rolled 1-5/16" flange
Hinge (2): Zinc plated continuous piano hinge
Optional: aluminum continuous piano hinge
Latch: Screwdriver cam latch(es)
Optional: key operated cam lock
Finish: Clear anodized extruded aluminum frames
Insulation: 3/4" polystyrene with 3.8 R value @ 75 degree F

Specifications:

Frame shall be .045 6063-T5 extruded aluminum with rolled 1-5/16" flange. Doors shall be fabricated from 24 ga pre-finished embossed galvanized steel (optional: .063 mill finish aluminum insert), (2) 6063-T5 extruded aluminum frames and 3/4" polystyrene insulation. Hinges shall be zinc plated continuous piano type (optional: aluminum continuous piano type; with aluminum panel insert). Insulation shall be 3/4" polystyrene with 3.8 R value @ 75 degree F temperature. Latches shall be screwdriver operated cam type (Optional: key operated cam lock). Finish of aluminum flanged frame and door frames shall be clear anodized.

Installation shall be in accordance with manufacturers instructions. Manufacturer shall guarantee against defects in material and workmanship for a period of one year.

Standard Sizes:

Standard Sizes (in)	Std Sizes (mm)	# of Latches
48x48	1219x1219	4
60x48	1524x1219	4
72x48	1828x1219	4

All units are hinged on the second dimension (height). Rough opening equals door size + 1/4".