

8 7 6 5 4 3 2 1

D

C

B

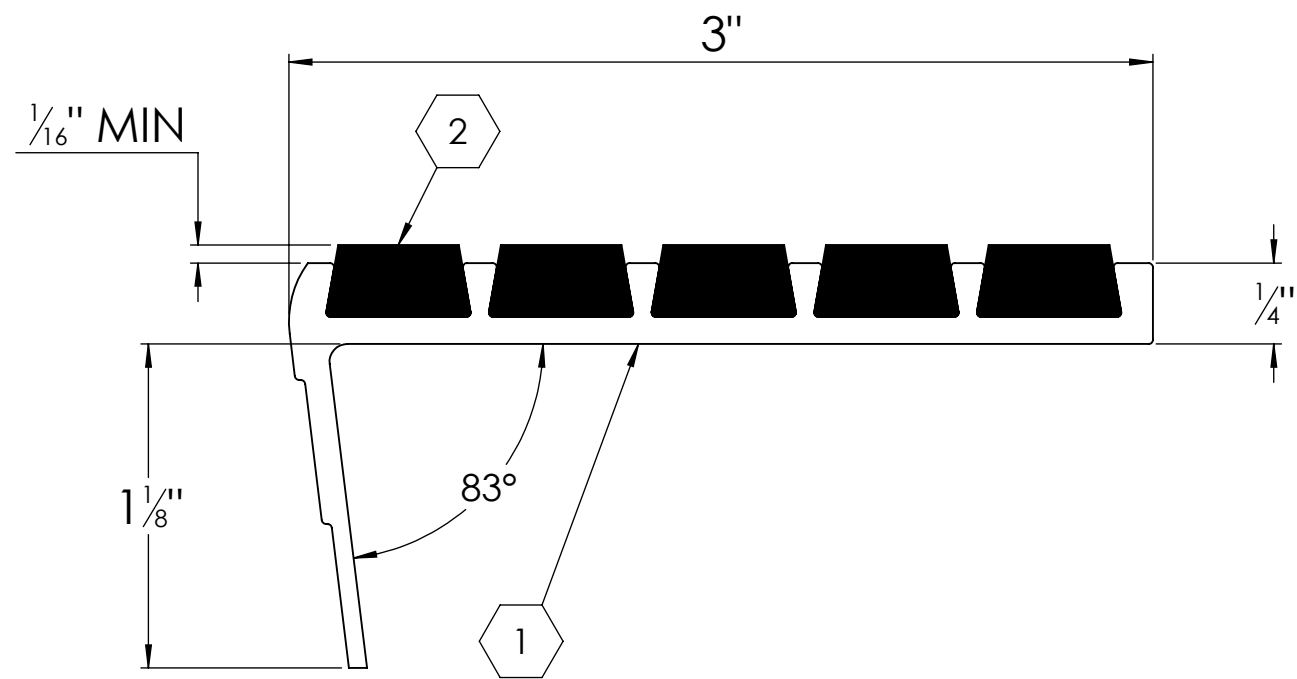
A

D

C

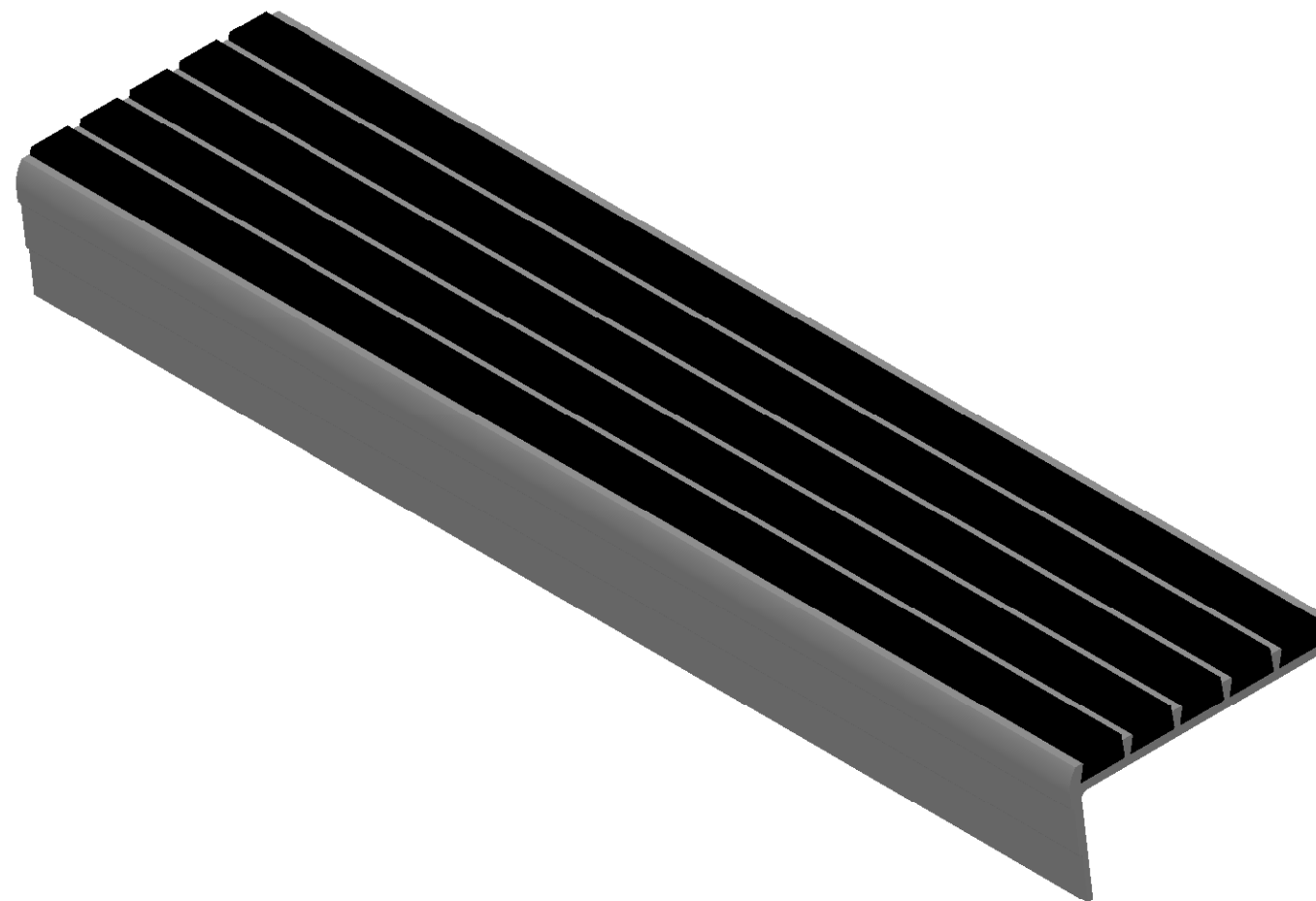
B

A



MODEL A3D

(SINGLE STAGE RIBBED ABRASIVE BARS)



SPECIFICATIONS:

① **BASE :** HEAT TREATED EXTRUDED ALUMINUM ALLOY 6063 T-5

② **ABRASIVE :** ALUMINUM OXIDE SILICON CARBIDE GRANULES IN A UV PROTECTED, 2 PART EPOXY, LOCKED INTO EXTRUDED CHANNELS

3. **BASE FINISH:** MILL

4. **POURED CONCRETE STAIRS:** NOSING SHALL TERMINATE NO MORE THEN 3" FROM END OF STEPS

5. **CONCRETE FILLED STEEL PAN STAIRS:** NOSING SHALL BE FULL LENGTH OF STEPS, LESS 1/8" CLEARANCE

6. **COLOR:** BLACK (STANDARD), SAFETY YELLOW, GRAY, RED, BROWN, GREEN, BURGUNDY, BLUE, BUFF

- 7. **LENGTH:** 12'0" MAXIMUM (STANDARD)
- 8. **COUNTER SUNK HOLES PRE-DRILLED FOR A #10 FASTENER** SPACED 3" FROM ENDS AND APPROXIMATELY 12" TO 15" O.C.

LENGTH	QTY	COLOR

PROPRIETARY AND CONFIDENTIAL: THE INFORMATION CONTAINED IN THIS DRAWING IS THE SOLE PROPERTY OF BABCOCK-DAVIS. ANY REPRODUCTION IN PART OR AS A WHOLE WITHOUT THE WRITTEN PERMISSION OF BABCOCK-DAVIS IS PROHIBITED.

BSTSB-A3D

UNLESS OTHERWISE SPECIFIED: DIMENSIONS ARE IN INCHES				TITLE: V850, Stair Tread, Bar Ribbed Abrasive, Long Nose Angled, Drilled For Bolt In,		
MATERIAL	NAME	DATE	SIZE	DWG. NO.	REV	
6063-T5	BMH	01/24/11	B	BSTSB-A3D	A	
FINISH: MILL	RELEASED	PE	01/24/11	WEIGHT: 0.52 LB/FT	SHEET 1 OF 1	

8 7 6 5 4 3 2 1