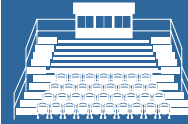


All Star Bleachers

Bleachers, Grandstands and Stadium Seating



13 34 16/ALL
BuyLine 6077

A View to all the Action

All Star Bleachers has been providing state-of-the-art seating system solutions for both indoor and outdoor applications. Whether you're in the market for standard code bleachers, custom designed grandstand, or stadium and arena seating, you can feel confident that you are working with a company that for over 50 years has and continues to design and manufacture our entire product line in the USA.

All Star Bleachers leads the industry delivering affordable, quality bleachers... Quick, with reduced shipping costs. This is accomplished by producing standard bleachers in bulk and warehousing them at 8 strategically located QuickShip distribution centers in the USA and Canada.

Teamwork Matters

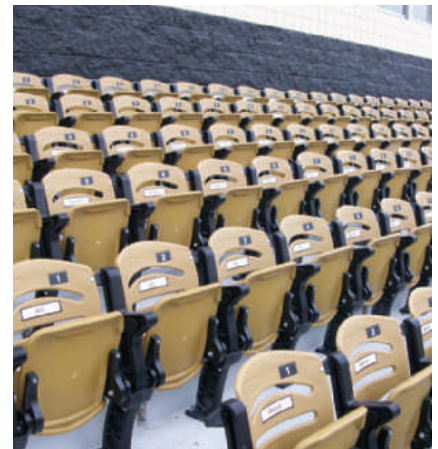
The All Star Bleachers team takes pride in our ability and willingness to meet individual customer needs with custom design solutions. We are dedicated in providing the highest quality planning and budgeting services to the project owner and their design team during the initial design phase. All Star Bleachers is committed to manufacturing products that surpass the competition and installation services that are both efficient and cost effective.



Contact Information

All Star Bleachers, Inc.
6550 New Tampa Highway
Lakeland, FL 33815

PHONE: 800-875-4254
FAX: 813-628-4254
E-MAIL: info@allstarbleachers.com



Contents

Bleachers and QuickShip	2	Renovations and Expansions ...	6
Grandstands	3	Team Benches, Tow Kits,	
Champion™ Stadium Seating ..	4	Tip-n-Roll Kits.....	7
Press Boxes	5	Specifications	8



www.allstarbleachers.com



Bleachers and QuickShip

by All Star Bleachers

A View to all the Action

All Star's bleachers are the industries most popular and easy to purchase bleachers. Available in four different lengths, they are portable, durable, economical, and maintenance-free.

Perfect for both indoor and outdoor use, All Star's bleachers are ideal for gymnasiums, indoor or outdoor basketball, volleyball, swimming pools, tennis courts, softball and most of all soccer!

Available in galvanized steel or lightweight aluminum at standard lengths of 7'6", 15', 21' and 27'. Custom lengths are also available as special order.



QuickShip items are pre-packaged and ready to ship within 72 hours!

- 3, 4 and 5 Row Aluminum Bleachers
- 3, 4 and 5 Row Galvanized Bleachers
- 10 and 15 Row Aluminum and Galvanized Bleachers
- Aluminum Team Benches
- Galvanized Team Benches



Item	Sts	Description
6A3S7.5	15	Alum Frame 6" rise, 12" seat board 3 row 7'6"
6A3S15	30	Alum Frame 6" rise, 12" seat board 3 row 15'
6A3S21	42	Alum Frame 6" rise, 12" seat board 3 row 21'
6A3S27	54	Alum Frame 6" rise, 12" seat board 3 row 27'
6A4S7.5	20	Alum Frame 6" rise, 12" seat board 4 row 7'6"
6A4S15	40	Alum Frame 6" rise, 12" seat board 4 row 15'
6A4S21	56	Alum Frame 6" rise, 12" seat board 4 row 21'
6A4S27	72	Alum Frame 6" rise, 12" seat board 4 row 27'
6A5S15C	50	Alum Frame 6" rise, 12" seat board 5 row 15'
6A5S21C	70	Alum Frame 6" rise, 12" seat board 5 row 21'
6A5S27C	90	Alum Frame 6" rise, 12" seat board 5 row 27'
A5D15CEA	40	Alum Frame 8" rise 10" seat board 5 row 15' with end aisle
A5D21CA	58	Alum Frame 8" rise 10" seat board 5 row 21' with aisle
A5D27CA	78	Alum Frame 8" rise 10" seat board 5 row 27' with aisle
SSBA15	10	Alum Frame 15' Team Bench
SSBA21	14	Alum Frame 21' Team Bench
CSBA15	10	Alum Frame 15' Team Bench with Back
CSBA21	14	Alum Frame 21' Team Bench with Back
DSBA15	10	Alum Frame 15' Team Bench with Back & Contour Seat
DSBA21	14	Alum Frame 21' Team Bench with Back & Contour Seat
TNR7.5		Tip and Roll Kit with Rubber Bumpers for 7.5' Bleacher
TNR15		Tip and Roll Kit with Rubber Bumpers for 15' Bleacher
TNR21		Tip and Roll Kit with Rubber Bumpers for 21' Bleacher
TNR27		Tip and Roll Kit with Rubber Bumpers for 27' Bleacher



Grandstands

by All Star Bleachers

13 34 16/ALL
BuyLine 6077



Angle Frame



Champion™ Stadium Seating



Column and Beam



Handrails and Substeps



Powder Coating



Vertical Rail



Vomitory



ADA Ramps

Grandstands

All Star Bleachers' grandstands are custom-designed and incorporate features such as VIP seating for revenue enhancement, tiered seating areas, integrated restrooms and free-standing or integrated roofs. These grandstands are in use at many high schools and universities, as well as in motor speedways such as those located in Daytona, Talladega and Darlington.

Our custom grandstands can be designed as non-elevated and elevated installations in various lengths and sizes. Modifications can be made to the rise and tread dimensions to meet sight line and seating requirements. Options include closed decks, aisles with substeps and handrails, handicap ramps and wheelchair seating for ADA compliance, press boxes and rooftop filming platforms.

Champion™ Stadium Seating

by All Star Bleachers

Champion™ Stadium and Arena Seating

All Star Bleachers' Champion™ line of stadium seating is the industry's newest state-of-the-art, solid injection molded polypropylene. With more than 20 years of experience in automotive plastics and designing a variety of seats, our engineers have developed winning designs that are both lightweight and strong. We use the same high-impact plastic that the automobile industry uses to manufacture car bumpers, not hollow plastic shells like other seating manufacturers.

Champion's outstanding features include:

- Manufactured in the USA
- Fade resistant U.V. inhibitors
- No rust, reduced maintenance cost
- Power wash for quick cleaning
- Seat and connecting mechanism resist cracking, peeling and fading
- Optional front or rear mount cup holders available
- Decorative end panels accommodate logo and aisle letter
- Seat backs feature two recessed areas to accommodate donor plate or seat number



Stadium



Arena



Bleacher



Sport



Quarterback



Spectator



Press Boxes

by All Star Bleachers

13 34 16/ALL
BuyLine 6077



Press Boxes

It's game day and the bleachers are filled with friends, family members and loyal fans from the community. All have arrived in anticipation of seeing their favorite players score the game winning run, touchdown, or point.

To capture the mood, the energy and the history, All Star Bleachers offers several Press Box solutions to add to your facilities grandstand.

Important aspects of any good Press Box are a comfortable environment for members of the media and local announcers to view the game from. Additionally, the view must be unencumbered as to ensure not a single aspect of the game is overlooked and recorded for history.

Features of a Press Box:

- Customized interiors reflect the individual needs of the client
- Prefabricated so most sizes can be delivered to job site in one piece
- Easy installation with crane
- Sizes vary from 12' to 60' with larger sizes available if needed
- Depth of press box can be designed to meet specific client requirements
- Complies with all state pre-approval and inspection requirements
- Designed to meet International Building Code & National Electric Code
- Optional upgrades include:
 - Filming platforms with steel railing and protective roof
 - Covered exterior patios
 - Slanted and/or non-reflective windows
 - Interior elevated spectator platform

Renovations and Expansions

by All Star Bleachers

Renovations/Expansions

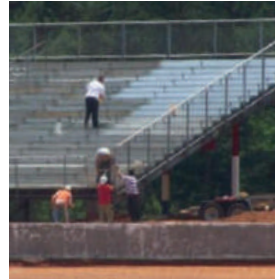
All Star Bleachers can inspect your bleacher or grandstand and make the necessary repairs due to cosmetic or structural damage. We can brighten and clean your aluminum by using a safe and highly effective solution. We can modify any existing structure for crowd control by adding vomitories or stairs or ADA compliant ramps and aisleways. All Star Bleachers can assist with:

- Replacing toeboards, riserboards, and footboards
- Replacing and/or extending chain link fence on side guardrails to meet current codes
- Repairing and/or enclosing back row openings
- Replacing or repairing damaged seat boards and other structural members
- Replacing or repairing missing wheel stops

All Star Bleachers' designers and engineers can help create a seamless expansion to any stadium. Whether you need to expand by adding traditional bleachers or want to upgrade to stadium seating, All Star can assist in the design and construction of any size expansion. All Star Bleachers can retrofit any existing bleachers or grandstand from any manufacturer.



Before



After



Accessories

by All Star Bleachers

13 34 16/ALL
BuyLine 6077



Team Benches

All Star Bleachers hasn't forgotten the players on the field, we offer 3 team bench solutions on game day or during practice. These benches can be bolted to surface or permanent mount supports and are available in standard lengths of 7'6", 15' and 21'. Custom lengths are available by special order.

- Our Standard Team Bench is constructed of a lightweight aluminum bench seat.
- Our Comfort Team Bench features a flat aluminum bench seat with contoured backrest.
- Finally, our Deluxe Team Bench features a contoured aluminum seat with contoured backrest.

Tow Kits

All Star Bleachers' makes it easy to move your bleachers from one venue to the next with its Tip-n-Roll Kit. These kits can be attached to All Star Bleachers' 3 or 4 row bleachers in standard lengths of 7'6", 15', 21' and 27'. The kit includes non-marring (NoMar) castors and skids to protect your flooring system. 4" diameter casters are bolted to the rear of each bleacher frame allowing the unit to be tipped and rolled.

Tip-n-Roll Kits

All Star Bleachers' Tow Kits are available for most standard bleacher models and can add unique versatility of moving your bleacher units for seasonal support changes or other needed functions.

Item	Sts	Description
SSBA15	10	Alum Frame 15' Team Bench
SSBA21	14	Alum Frame 21' Team Bench
CSBA15	10	Alum Frame 15' Team Bench with Back
CSBA21	14	Alum Frame 21' Team Bench with Back
DSBA15	10	Alum Frame 15' Team Bench with Back & Contour Seat
DSBA21	14	Alum Frame 21' Team Bench with Back & Contour Seat
TNR7.5		Tip and Roll Kit with Rubber Bumpers for 7.5' Bleacher
TNR15		Tip and Roll Kit with Rubber Bumpers for 15' Bleacher
TNR21		Tip and Roll Kit with Rubber Bumpers for 21' Bleacher
TNR27		Tip and Roll Kit with Rubber Bumpers for 27' Bleacher



Specifications

by All Star Bleachers

Part 1 – General

1.01 System Description

- A. Provide labor, material, equipment and supervision necessary to design, fabricate and install permanent steel grandstands including the following:
1. Steel Substructure
 2. Decking System
 3. Concrete Foundations
 4. Press Box Support Structure
 5. Press Box

1.02 Quality Assurance

- A. Manufacturer: All Star Bleachers, Inc. 6550 New Tampa Highway Lakeland, FL 33815, (800) 875-3141 or (863) 687-3141 Fax: (863) 688-8129
- B. Manufacturer Qualifications: Manufacturer must have ten years experience in the manufacture of bleachers and grandstands; welders must be AWS certified; manufacturing capability according to code requirements.
- C. Installer Qualifications: Factory trained and experienced in the proper installation of grandstands.
- D. Source Quality Control: Mill Test Certification

1.03 Submittals

- A. Manufacturer's product data: Submit manufacturer's descriptive product data for project.
- B. Shop Drawings: Manufacturer to submit shop drawings sealed by registered professional engineer and schedules for type, location, quality, and details of steel and aluminum components required for the project.
- C. Certificates:
1. Insurance Certificate
 2. Bid Bond
- D. Product Sample: Submit one 18-inch seat sample.
- E. Color Sample: If applicable, submit sample.

1.04 Site Conditions

- A. Field Sites:
1. Owner to make site accessible
 2. Owner to verify locations and bench marks
- B. Underground utility Line: Owner to clearly mark all underground utilities and obstructions.
- C. Soil Report: Furnished by Owner

1.05 Warranty

All Star Bleachers, Inc. warrants its permanent grandstand to be free from defect in materials and workmanship in the course of manufacturing for a period of one year beginning at Date of Substantial Completion of projects installed by All Star Bleachers, Inc. or beginning at Date of Initial Delivery of product for projects installed by others. Installation of said products by All Star Bleachers, Inc. personnel or proper installation by others is covered by the one-year warranty. This warranty excludes any other defects resulting from abnormal use in service, accidental or intentional damage or any occurrences beyond All Star Bleachers, Inc. control.

Part 2 – Products

2.01 Acceptable Manufacturer

- A. All Star Bleachers, Inc.

2.02 Permanent Steel Grandstand

A. Product Description:

1. Clear Span, I-beam: Vertical columns are placed 18' on center laterally and "as required" on center front to back. All horizontal beams are wide flange. Traverse bays are free of cross-bracing the total length of the grandstand.
2. Stringers: Stringers are wide flange with angle rise and depth fabrication and are placed at 6' on center.
3. Front walkway: 66" in clear depth, elevated 4' above grade. Each seat is 17" above it's respective tread.
4. Entry Stairs: Provide entry stairs to conform to local codes.
5. Aisles: Width of aisles is 48" or conforms to local codes.
6. Decking: Standard Rises: 8", 9 3/4", 11 1/4" or 13 1/4". Recommended tread depths: Chairs, 33", Bench Seating with backrest, 30", Bench Seating, 26".
 - a. Semi-Closed Deck Arrangement
 - b. Closed Deck Arrangement
 - c. Welded Aluminum Deck System
 - d. Interlocking Deck
 - e. Tongue and Groove Deck
7. Guardrailing: To be at all sides of bleacher, entry stairs and ramps, portals and landings. Railing shall be 1 5/8" O.D. anodized aluminum pipe with end caps at ends of straight runs and elbows at corners. All guardrails shall be secured to angle risers by galvanized fasteners. Railing shall be 42" above walkways and entrances. Railing shall be 42" above the center of any adjacent seat. Guardrailing on sides and back shall include 9 gauge galvanized chain link fencing fastened in place with aluminum ties.
8. Press Box:
 - a. Press Box is independently supported, but support structure is connected to grandstand.
 - b. Press Box: Specifications available upon request.
9. Handicap Provision: Design to incorporate ramps and wheelchair spaces within the grandstand system in accordance with applicable building codes and ADA.

B. Materials/Finishes:

1. Substructure: ASTM steel only
 - a. Galvanized Steel: Structural fabrication with ASTM-A36/A992 steel. Shop connections are seal welds. After fabrication all steel is hot dipped galvanized to ASTM-A123 specifications.
 2. Seating/Planking:
 - a. All Star Bleachers' Champion Series Chairs
 - b. Seat planks, Backrest, Stanchions: Solid injection molded polypropylene; Optional on backrests: Powder coated colors.
 - c. Tread Planks, Riser Planks: Extruded aluminum alloy, 6063-T6 mill finish. Optional on riser planks: Powder Coated colors.
 - d. Joint Sleeve Assembly: Extruded aluminum alloy 6063-T6, mill finish.
 3. Accessories:
 - a. Channel End Caps: Aluminum alloys, 6063 T6, clear anodized 204R1, AA-M10C22S31, Class II.
 - b. Hardware:
 - 1) Bolts, Nuts: Hot-dipped galvanized.
 - 2) Tie down clip assembly: Aluminum alloy 6061-T6.

- 3) Structural Hardware: Equal to or greater than hot-dipped galvanized ASTM-A325. No connections are classed as slip critical.

C. Fabrication:

1. Design Load:
 - a. Live Load: 100 p.s.f. gross horizontal projection.
 - b. Lateral Sway Load: 24 plf seat plank.
 - c. Perpendicular Sway Load: 10 plf seat plank
 - d. Live Load of Seat and Tread Planks: 120 plf.
 - e. Guardrail: Per Local code
 - f. Wind Load: Per Local code
2. All connections made in shop to be shop welded.
 - a. Manufactured by certified welders conforming to AWS standards.

2.03 Angle Frame Bleachers

A. Product Description

1. Frames are spaced 6'-0" on center and are laterally joined by cross-bracing as required to satisfy design loading.
2. Units are offered in standard 3, 4, 5, 10, and 15 row elevated and non-elevated units. Standard widths are 15', 21', and 27'. Custom units are available in other widths.
3. Transportability: 3 and 4 row units can be equipped with 4" non-marring castors to allow the bleacher to be tipped and rolled away. 3, 5, 10, and 15 row units can be equipped with a wheel set (4.80 x 12 tires) and galvanized steel tongue which will allow the units to be towed. 2" x 6" pressure treated mudsills are required for sitem conditions with poor soil bearing capacity.
4. For elevated units: Front walkway is 54" in clear width, elevated 30", 36", 42" or 48" above grade.

B. Materials/Finishes

1. Substructure:
 - a. Galvanized Steel Angle: Structural fabrication with ASTM-A36/A992 steel. Shop connections are seal welds. After fabrication all steel is hot dipped galvanized to ASTM-A123 specifications.
 2. Aluminum Angle: Structural fabrication with mill finish, aluminum angle (6061-T6 alloy). Shop connections are welded.

Part 3 – Execution

3.01 Installation

- A. All works performed by factory-trained technicians experienced in bleacher seating installation.
- B. Project as per approved shop drawings.

3.02 Field Quality Control

- A. Foundation: Footings for the grandstand shall provide sufficient bearing area at bottom to support all loads of the grandstand. Depth and design of footings shall be determined by local soil conditions. Hot-dipped galvanized anchor bolts shall be secured in the concrete footings. Concrete shall attain working strength of 3,000 psi.

3.03 Clean-up

- A. Clean up all debris caused by work of this section.

