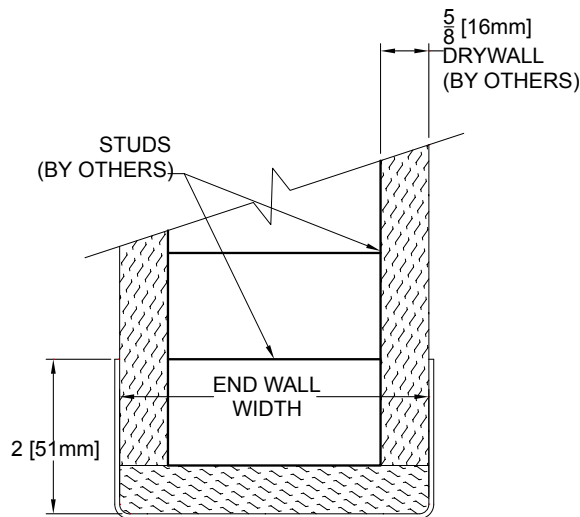
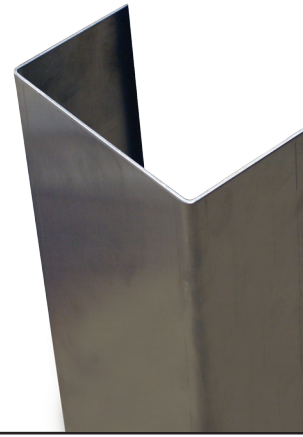


Stainless Steel Surface Mount End Wall Protector



- ▶ Provide a superior impact protection for use in kitchens, sanitation or other high abuse areas
- ▶ Conform to NSF Standard 51 for direct food contact in food service areas. (Custom Type 304 Stainless Steel)
- ▶ Specify the size you need! Typical wing sizes are 2" or 3". Available in floor to ceiling heights



IPC.427/REV.2

P.O. Box 406 · Muskego, Wisconsin 53150 USA
inprocorp.com
Nationwide 800.222.5556/Fax 888.715.8407
International Sales 262.679.5521/Fax 262.679.5524

INPRO CORPORATION
Interior and Exterior Architectural Products

Stainless Steel Surface Mount End Wall Protector

Suggested Specifications

PART 1 - GENERAL

1.01 SUMMARY

A. Surface mount stainless steel end wall protector for wall protection:

1.02 SECTION INCLUDES

A. Surface mount stainless steel end wall protectors

1.03 SUBMITTALS

A. Product data for each type of end wall protector specified.

B. Detail drawings indicating mounting details with the appropriate fasteners for specific project substrates.

C. Material samples of stainless steel.

D. Cleaning and maintenance instructions for door and wall protection systems.

1.04 DELIVERY, STORAGE AND HANDLING

A. Deliver materials in unopened factory packaging to the jobsite and store in original packaging in a climate controlled location away from direct sunlight.

1.05 PROJECT CONDITIONS

A. Products must be installed in an interior climate controlled environment.

1.06 WARRANTY

A. Standard IPC Limited Lifetime Warranty against material and manufacturing defects.

PART 2 - PRODUCTS

2.01 MANUFACTURER

A. Acceptable Manufacturer:

InPro Corporation, PO Box 406 Muskego, WI 53150 USA;

Telephone: 800-222-5556, Fax: 888-715-8407,

Internet address: <http://www.inprocorp.com>

B. Substitutions: Not permitted

C. Provide all stainless steel end wall protectors and wall protection from a single source.

2.02 MANUFACTURED UNITS

A. Custom Stainless Steel Surface Mount End Wall Protectors

1. Stainless Steel End Wall Protectors

Custom - 1" minimum wing width, 3" minimum end wall width

Corner radius - 1/8"

Height - 48" (1219mm) or custom

All edges to be deburred.

2.03 MATERIALS

A. Stainless Steel: Custom stainless steel end wall protectors shall be manufactured from Type 430, 16 gauge stainless or Type 304, 16 gauge stainless steel.

2.04 COMPONENTS

A. Attachment

1. Cement-on.

2. Screw-on

2.05 FINISHES

A. Stainless steel: No. 4 satin finish. All edges to be deburred.

PART 3 - EXECUTION

3.01 EXAMINATION

A. Examine areas and conditions in which the end wall protector and corner guards will be installed.

1. Complete all finishing operations, including painting, before beginning installation of end wall protectors and corner guards.

B. Wall surface shall be dry and free from dirt, grease and loose paint.

3.02 PREPARATION

A. General: Prior to installation, clean substrate to remove dust, debris and loose particles.

3.03 INSTALLATION

A. General: Locate the end wall protector as indicated on the approved detail drawing for the appropriate substrate and in compliance with the IPC installation instructions. Install end wall protectors, level and plumb at the height indicated on the drawings.

B. Installation of stainless steel end wall protectors:

1. Surface must be dry, clean and properly sealed.

2. Cement-on: Apply heavy-duty adhesive to the back of the end wall protector in a zigzag pattern. Position the end wall protectors on the wall and press firmly in place.

Screw-on: Position the end wall protector on the wall, press firmly in place and attach with the provided fasteners.

3. Remove the protective plastic covering from the exposed surface of the end wall protector or corner guard.

3.04 CLEANING

A. At completion of the installation, clean surfaces in accordance with the IPC clean up and maintenance instructions.

