



Automatic Doors  
Opening a World of Possibilities

Innovative Solutions. Flexible Options.

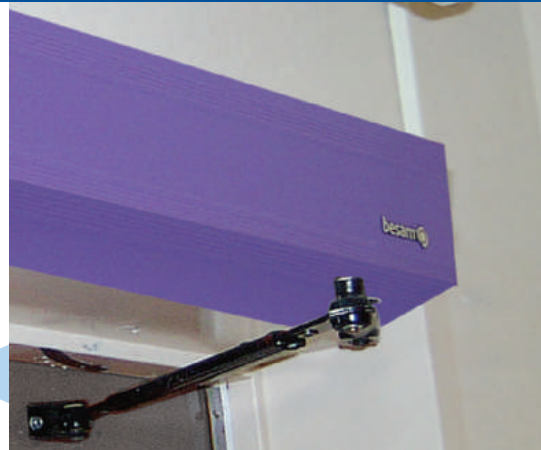


# The Besam Philosophy



Unislide™ Bi-Part  
Custom Application

Custom Paint and  
Matching Available



Our local offices can work with you to design a unique package utilizing custom materials.

Besam has been designing, installing and servicing automatic doors for over 45 years. Our wide variety of clients include prestigious organizations in the retail, healthcare, hospitality and transportation industries. Our focus is to provide technologically advanced products and innovative application solutions that are centered on our customer's needs. With Besam's comprehensive product line and unparalleled service provider network, you are assured of the right product for your entrance. In addition, Besam is committed to manufacturing the safest products in the industry, and has the ability to install and service automatic doors nationwide with AAADM certified technicians.

## Design Assistance & Custom Applications

Besam doors can be precisely matched to suit the specific requirements of a broad range of individual projects. Besam has knowledgeable sales representatives available that are specifically dedicated to assisting in the specification process to help you with your detailed application needs. Standard drawings and technical assistance are available through our Design Hotline, at **1-866-BESAM-US**. In addition, you can also download any drawing or specification from our web site – [www.besam.com](http://www.besam.com).

## AIA Registered CEU Course Available

Specifying automated doors is not automatic! Take our AIA registered course and learn about different automatic door types, applications, limitations and code issues. In addition to building upon your product knowledge, you will receive one HSW learning unit credit from AIA for completing the Besam *Automatic & Revolving Door* course. Contact Besam for an AIA accredited in-house presentation.



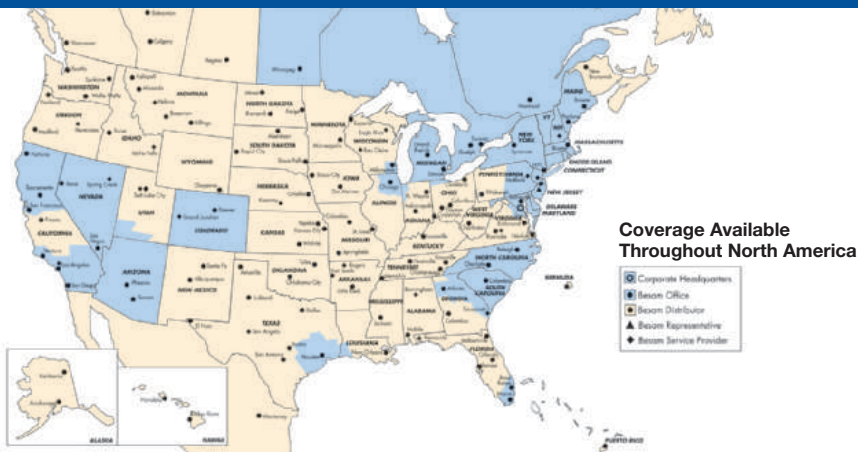
Curved Slider

## World-Class Service and Planned Maintenance Programs

We are focused on maintaining your Besam equipment to operate safely and efficiently through the life of your product. Our extensive service capabilities throughout North America include trained technical specialists, around-the-clock emergency service, centralized dispatch and customized reporting to track your door service history. Our service vans are equipped with all necessary components to insure any problem can be corrected quickly. More importantly, Besam provides service 24/7 including weekends and holidays, and we also provide quoted service for all repair and retrofit projects. **In addition, we service all brands of automatic and manual doors... making us the only service company you need.**



# Service & Support



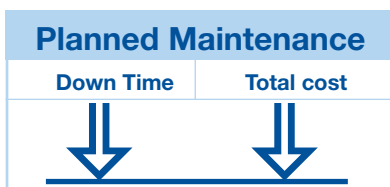
## Besam – Always At Your Door

We are focused on maintaining your Besam equipment to operate safely and efficiently. Our extensive service capabilities throughout North America include trained technical specialists, around-the-clock emergency service, centralized dispatch and customized reporting to track your door service history. Our service vans come equipped with all necessary components to insure any problem can be corrected quickly. More importantly, Besam provides service 24/7 including holidays, and we also provide quoted service for all repair and retrofit projects. **We also service all brands of automatic and manual doors... making us the only service company you need.**

Our Total Door Management program begins with computerized systems to track and manage your door service history, including histories per location, per region, per manufacturer or per door enabling you to make well-informed decisions regarding your automatic door packages. The American Association of Automatic Door Manufacturers (AAADM) recommends regular inspections of automatic doors – one call to Besam and we can coordinate all of your inspections!

Our Planned Maintenance Agreements are ideal to minimize door down time and reduce the total cost of door ownership. Similar to automobile maintenance inspections, Besam will send a certified technician to perform service checks that will keep your automatic doors operating safely and efficiently, minimizing unscheduled repairs. During these regularly scheduled visits, our technicians will clean, inspect, lubricate, and adjust rollers, tracks, gear boxes, pivots, belts and other important components of your door equipment. In addition, your door package will be adjusted to comply with ANSI code guidelines.

To help you manage your door expenditures, we offer several maintenance agreements to provide increased protection and minimize fluctuations in your month-to-month spending. Both our Labor and Full Maintenance Agreements allow you to budget more closely the cost of keeping your doors operating safely and efficiently. Our Labor Agreement includes both planned maintenance scheduled visits and all labor charges for unscheduled repairs, while providing you the flexibility to pay for any parts used. Our Full Maintenance Agreement provides even more protection by adding parts coverage to the Labor Agreement.



**Besam's service and installation technicians are AAADM certified and factory trained. Besam can service all brands of automatic and manual doors – solving all your needs with just one call – 1-877-237-2687!**



# Sliding Doors



*Unislide™  
Bi-Part with  
UltraView  
Sensor*



*Unislide™  
Single Slide  
with UltraView™  
Sensor*



*Unislide™ Resilience  
(Hurricane Resistant)*

## Unislide™ - An Exceptional Performer

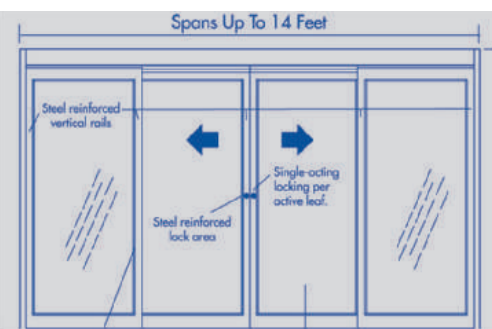
The Unislide is a state-of-the-art automatic sliding door system. Sleek styling and technological advancements make this package ideal for any architectural project. The options are virtually limitless – you can choose from overhead concealed, surface mounted, telescopic, all glass, hurricane resistant or even curved sliding door. A variety of features make Unislide unique:

- Attractive header design eliminates the large gaps found in traditional sliding door systems, hiding unattractive screws and mechanical parts. This design makes the Unislide essentially noise-free and reduces dirt and debris that can enter in the header and create operational challenges.
- Strong and extremely efficient motor requiring only a maximum of 3A current draw. Five operators can run on one 20A line – significantly reducing your operation costs.
- Besam's exclusive UltraView sensor is designed with unique safety features including threshold protection and constant monitoring .
- Meets and exceeds ANSI A156.10 Standard for power operated pedestrian doors.

## Unislide™ Resilience - Hurricane Rated For Superior Strength

Besam's Unislide Resilience provides the same sleek aesthetics as the standard Unislide package, while meeting the strict South Florida Building Code that Dade county officials enacted after Hurricane Andrew made landfall in 1992. The Resilience package offers the customer several benefits and features:

- Full impact door package tested and approved at 70 psf (167 mph) for full breakout and fixed sidelite packages. Non-impact door package has been tested to 60 psf (155 mph).
- Panic exit device is available on full breakout packages and complies with NFPA 101 life safety code requirements for single action egress.
- Narrow profile aluminum doors are attractive and allow more glass area giving you a larger entranceway while still providing greater hurricane protection. (Medium and wide stile is available if desired.)
- Equipped with Unislide closed header design.
- A single-acting lock secures the hurricane package.



*Attractive Narrow Stiles. DuPont SGP & Arch Sentry Hurricane Resistant Glass. Panic exit devices available on full breakout packages. See website for approvals.*



# Sliding Doors



Unislide™  
Clean Room

Unislide™  
CGL



## Unislide™ Telescopic

Combining the benefits of sliding doors, yet allowing for 33% greater clear door opening, telescopic doors are the answer when you require a little more space for your opening. The Unislide Telescopic package features the striking header design found in the standard Unislide package and prevents the spreading of dirt and debris. Smooth operation, uncompromised aesthetics and a variety of options to choose from make the telescopic package an ideal choice for your project.

## Unislide™ CGL — All-Glass Slider

When your entrance calls for an elegant statement, look to the Unislide CGL all glass slider for exceptional beauty. Providing an unobstructed view and a spectacular image, the Unislide CGL provides a graceful image to any doorway. Personalize the appearance of your entryway by choosing one our painted finishes, special anodizing, stainless steel or brass clad.

- 7" and 10" bottom rails available to meet varying building codes.
- Inconspicuous lock is available in bottom rail without compromising aesthetics.
- Tinted or etched glass can also be provided for an extra element of style.

## Unislide™ Clean Room

A clean room package is also available for Unislide sliding doors. The package consists of 45 degree sloped glass stops and non-shedding Santoprene weather-stripping. The Besam clean room package has been tested in an ultra-clean environment for particulates and can be used in clean rooms up to class 10. This package is available in fixed sidelite configuration.

## Curved Glass Slider (CM)

Our curved glass sliding door system not only adds a three-dimensional look to entryways, but also allows for a broader door opening than provided by traditional sliding doors. The attractive design is available in a variety of finishes that are pleasing to the designer's eye, as well as custom radii to suit your specifications.



Unislide™  
Telescopic



Curved  
Glass Slider

# Sliding Doors

## Unislide Dimension Guide - Overhead Concealed

	Door Opening	Overall Frame Width	Masonry Opening Width/Height
<b>Single Slide</b>			
OC1-7'	2'11 1/4" (895mm)	7'0" (2134mm)	7'0 1/2" x 7'6" (2146x2286mm)
OC1-8'	3'5 1/4" (1048mm)	8'0" (2438mm)	8'0 1/2" x 7'6" (2451x2286mm)
OC1-8'6"	3'8 1/4" (1124mm)	8'6" (2591mm)	8'6 1/2" x 7'6" (2604x2286mm)
OC1-9'	3'11 1/4" (1200mm)	9' (2743mm)	9' 1/2" x 7'6" (2756x2286mm)
<b>Bi-Part</b>			
OC2-8'	3'0" (914mm)	8'0" (2438mm)	8'0 1/2" x 7'6" (2451x2286mm)
OC2-10'	4'0" (1219mm)	10'0" (3048mm)	10'0 1/2" x 7'6" (3061x2286mm)
OC2-12'	5'0" (1524mm)	12'0" (3658mm)	12'0 1/2" x 7'6" (3670x2286mm)
OC2-14'	6'0" (1829mm)	14'0" (4267mm)	14'0 1/2" x 7'6" (4280x2286mm)
OC2-16'	7'0" (2134mm)	16'0" (4877mm)	16'0 1/2" x 7'6" (4890x2286mm)

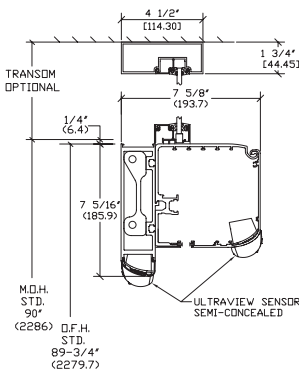
## Unislide Dimension Guide - Surface Applied

	Door Opening	Overall Frame Width	Masonry Opening Width/Height
<b>Single Slide</b>			
SA1-7'	2'11 1/4" (895mm)	7'0" (2134mm)	7'0 1/2" x 7'6" (2146x2286mm)
SA1-8'	3'5 1/4" (1048mm)	8'0" (2438mm)	8'0 1/2" x 7'6" (2451x2286mm)
SA1-8'6"	3'8 1/4" (1124mm)	8'6" (2591mm)	8'6 1/2" x 7'6" (2604x2286mm)
SA1-9'	4'2 7/8" (1292mm)	9' (2743mm)	9' 1/2" x 7'6" (2756x2286mm)
<b>Bi-Part</b>			
SA2-8'	3'0" (914mm)	8'0" (2438mm)	8'0 1/2" x 7'6" (2451x2286mm)
SA2-10'	4'0" (1219mm)	10'0" (3048mm)	10'0 1/2" x 7'6" (3061x2286mm)
SA2-12'	5'0" (1524mm)	12'0" (3658mm)	12'0 1/2" x 7'6" (3670x2286mm)
SA2-14'	6'0" (1829mm)	14'0" (4267mm)	14'0 1/2" x 7'6" (4280x2286mm)
SA2-16'	7'0" (2134mm)	16'0" (4877mm)	16'0 1/2" x 7'6" (4890x2286mm)

Dimensions are available on all Besam Automatic Sliding Doors. Please call for more information. Visit [www.besam.com](http://www.besam.com) to view our drawings and specifications.



UltraView™ Sensor



### Technical Data:

Power Supply  
120V, 20amp, 60Hz

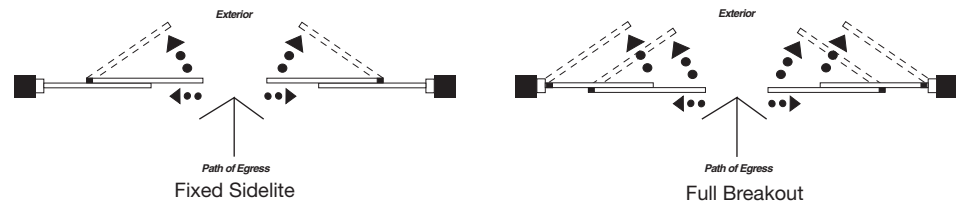


## UltraView™ – Aesthetically Pleasing

UltraView is a concealed sensor specially designed for use with Besam's Unislide sliding door packages. Intelligent communication between UltraView and the door control ensures a proactive approach to safety by placing the door in a fail-safe position should the sensors begin to weaken or if monitoring fails between control and sensor. Optimized safety, constant monitoring and easy installation make the UltraView the ideal sensor for your Unislide door system. The UltraView sensor exceeds requirements for ANSI A156.10-2005 compliance.

## Emergency Breakaway

Push on the leading edge of door for emergency breakout of active leaf (or active leaf-sidelite) assembly. Emergency breakout can be achieved when door is in any position.



## Unislide Sliding Doors

	Overhead Concealed	Surface Mount	All Glass	Telescopic OHC	Telescopic - Surface Mount	Resilience	Clean Room
<b>Header Configuration</b>							
Overhead Concealed	■		■	■		■	■
Surface Mounted		■			■		■
<b>Door Configuration</b>							
All Glass	■		■				
Single Slide	■	■	■	■	■	■	■
Bi-Part	■	■	■	■	■	■	■
Telescopic	■	■		■	■		
<b>Emergency Egress</b>							
Fixed Sidelite	■		■	■	■	■	■
Full Breakout	■	■		■		■	
<b>Operator Type</b>							
Electromechanical	■	■	■	■	■	■	■
Complies with ANSI 156.10	■	■	■	■	■	■	■
Medium to Heavy Traffic	■	■	■	■	■	■	■
<b>Miscellaneous</b>							
Interface with Panic Devices	■	■		■	■	■	
Interface with Access Control Devices	■	■	■	■	■	■	

# Manual Doors for ICU/CCU Rooms



*Corridor of  
2-Panel  
ICU Packages*

*3-Panel ICU  
Telescopic  
Package*



## Perfect for Demanding Environments

Intensive and critical care units are high-traffic areas where needs change at a moment's notice. Equipment such as wheelchairs, gurneys, medical carts and other devices are continuously brought in and out of rooms. In addition, a varying number of hospital staff rely on repeated and reliable access to ICU/CCU areas. Besam has a complete line of manual sliding doors to fit any ICU/CCU room.

## ICU/CCU

Besam's sliding door package has been designed based on Unislide mechanics and includes several advantages to the function, operation and breakout features on the trackless package.

- Features an appealing and functional closed header design that prevents spreading of dust, germs and debris while attractively framing your entrance. The package operates smoothly with no dragging or resistance.
- Standard manual sliding door packages are available in 2-, 3- and 4-panel and can be specified with trackless configuration.
- An interlocking pivot configuration prevents improper use during emergency breakout and includes an effective tube which prevents the door from being broken out if not in the full open position.
- Heavy duty rollers, concealed pivots and associated devices use the same durable hardware that is used in our Unislide automatic sliding door packages.
- Smoke seal packages available for standard 2- and 4-panel packages.
- Optional Positive Latch with sliding 2- and 4-panel packages. This lock will latch the active leaf in place when closed. A lever handle comes equipped on each side of the active leaf door to unlock the sliding door.

## Telescopic ICU/CCU

Telescopic ICU/CCU door systems allow for a greater clear door opening where more space for entering and exiting is required.

- The telescopic variety is available in 3- or 6-panel configurations with full breakout and fixed sidelite packages as options.
- Can be specified with trackless, recessed track and non-panic configurations.

# Manual Doors for ICU/CCU Rooms



Bi-Way™



2-Panel  
ICU Package



### Positive Latch

Besam manual ICU/CCU sliding doors are available with an optional lock that will latch the active leaf in place when closed. A lever handle is provided on each side of the active leaf door to unlock the sliding door.

## Bi-Way™

This package is an improvement on traditional ICU/CCU sliding doors and eliminates congested hallways and obstructions by floor tracks while providing ease of use for hospital personnel.

- The Bi-Way three-panel unit combines the advantages of a manual folding door and a manual swing door.
- Opens easily and its swing door stays in the hold-open position when pushed to 90 degrees.
- The Besam SW100 low energy operator can be easily installed onto your existing manual door(s) to make it fully automatic.

## Smoke Seal Package

Besam offers a smoke seal option for our standard 2- and 4-panel ICU/CCU doors. The smoke seals provide a barrier between the elements and possible gaps in a door package. Seals are specified for their ability to greatly reduce smoke infiltration, positive or negative air pressures and airborne infectious diseases. The seals are tested for smoke and air infiltration per UL1784 section 7.1 & 7.2.

## A Variety of Options to Suit Your Needs

	ICU/CCU Sliding Doors	Telescopic	Bi-Way Swing/ Fold Doors
Trackless	■	■	■
Recessed Track	■	■	
Surface Mounted Track	■		
Smoke Seals	■		
2-Panel	■		
3-Panel	■	■	■
4-Panel	■		
6-Panel	■	■	
Full Breakout	■	■	■
Fixed Sidelite	■	■	





# Swinging Doors

## A Progressive Approach to Any Application



PowerSwing™



Swingmaster®

### Swingmaster® 900 Series - New & Improved

The Swingmaster 900 Series is a high quality performer which features a spring close design that allows the operator to counteract most normal wind conditions. The operator is easy to service, bottom load adaptable and is available in overhead concealed or surface mount header configurations; single, simultaneous pair or pair egress. Customers will be pleased with the benefits Swingmaster has to offer:

- Durable and strong with quiet operation
- Can be customized for low energy and pedestrian applications
- Can be utilized with a wide variety of doors including wood, hollow metal and aluminum
- Interfaces with panic devices and access control devices
- Meets ADA and handicap standards including ANSI 156.9-2007
- Meets or exceeds minimum requirements of ANSI A156.10-5005 Standard

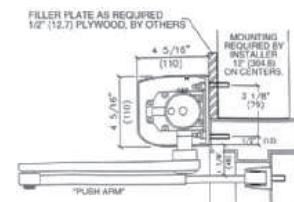
### PowerSwing™

The Besam PowerSwing is an electro-hydraulic operator designed for a wide variety of applications. The PowerSwing has several unique characteristics:

- Strong enough for both pedestrian applications and low-energy applications.
- Designed to be surface mounted to existing fixtures with little or no modifications, easily transforming your existing manual doors for ADA compliance.

Swing Doors	PassPort 9000	Swingmaster	PowerSwing	SW100
<b>Header Configuration</b>				
Overhead Concealed	■	■		
Surface Mounted	■	■	■	■
<b>Package Configuration</b>				
Operator only		■	■	■
Operator with Aluminum Door & Presence Detection Device	■			
<b>Standards Compliance</b>				
Complies with ANSI 156.19 for power assist and low energy power operated doors		■	■	■
Complies with ANSI 156.10 for power operated pedestrian doors	■		■	
<b>Applications</b>				
UL Rated for fire door packages (A&B Labeled Double Egress) A,B,C,D & E Single Egress (surface mounted only)		■	■	
Exterior Doors	■	■	■	■
Light to Medium Traffic		■	■	■
Medium Traffic	■	■	■	
Medium to Heavy Traffic	■	■		
Emergency Breakaway	■	■	■	■
Single	■	■	■	■
Pair Simultaneous	■	■	■	
Dual Independent			■	
Dual Egress	■	■	■	
<b>Miscellaneous</b>				
Interface with Panic Devices	■	■	■	■
Interface with Access Control Devices	■	■	■	■
<b>Operator Type</b>				
Electro-mechanical	■	■		■
Electro-hydraulic			■	
Microprocessor Control	■	■		■

**Swingmaster offers high performance in the most demanding of applications.**



PowerSwing

# Swinging Doors



Swingmaster®  
Fire-Rated  
Package

PassPort  
9000MP

**PowerSwing offers full pedestrian or low energy capability, along with the benefits of electro-hydraulic technology.**

**Technical Data:**  
Power Supply  
120V, 20amp, 60Hz

## PassPort 900

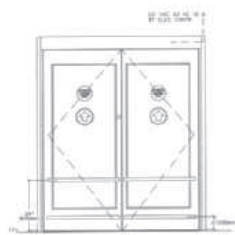
In addition to operators, Besam offers a complete door package consisting of a Swingmaster operator, aluminum door and complete safety system. The PassPort packages are ideal for high-traffic retail applications. It includes:

- Swingmaster 900 operator
- Solid construction of Besam's aluminum door
- Motion sensor for activation
- Overhead presence/device sensor
- Door mounted presence sensor
- Three degrees of presence detection that either meet or exceed ANSI A156.10-2005 Standard.
- Three packages available to suit your application needs – PassPort Standard, PassPort Lite and PassPort Plus. All PassPort packages are equipped with motion sensors to provide reliable coverage and activation. Presence sensors are offered.

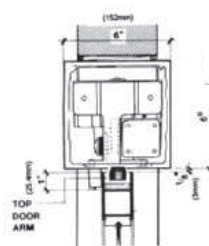
## Automatic Fire Door Package

UL rated fire door packages are available for both the electro-hydraulic PowerSwing and electro-mechanical Swingmaster. In the event there is smoke, fire or power failure, a UL listed sensing device sends an impulse to deactivate the Besam automatic operator and approved latch mechanism. The latch/latches secure the door and function as manual fire doors. The fire package is available in single, pairs or double egress.

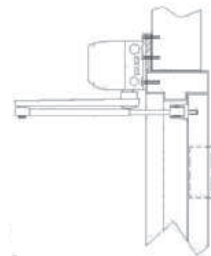
**Visit Our Web Site – [www.besam.com](http://www.besam.com) – For Additional Swing Door Drawings**



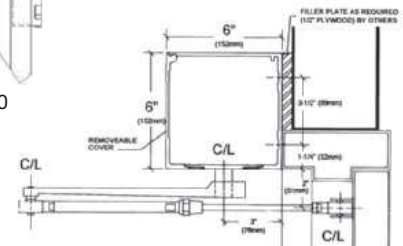
Exterior Elevation  
PassPort 9000



Swingmaster Concealed Unit



SW100



Swingmaster Surface Mounted Unit

# Swinging Doors

## SW100

Low energy applications are required on many doors within a facility, but not all operators have the durability and strength to stand up to demanding environments. The SW100 electro-mechanical low energy operator is gentle enough for push forces to meet low energy codes yet suitable for hospital corridors, schools, government and office buildings. Automate your existing manual doors with an operator that has several innovative features:

- Manual push forces to meet ANSI A156.19 - 2007
- UL/CUL #939D approved
- Extremely quiet operation
- Adjustable spring close
- Electric strike integration
- Integration with overhead presence devices for safety

In addition, the SW100 offers some sophisticated benefits not found in other low energy operators:

- Lock Circuit Retry
- Electronic Dampening
- Stack Pressure Compensation
- Battery Convenience Mode
- Test of Safety Sensors
- Power Assist
- Obstruction Control
- Low Power Consumption



*Attractive and flexible, the SW100 low energy operator can be utilized in many applications.*



**Choose SW100 to transform your existing manual doors into ADA compliant entrances.**

# Folding Doors

## In A Tight Spot?

Besam offers the Ready-Fold, automatic folding door system – ideal for retrofit projects or new construction where space is limited. The Ready-Fold package is designed for two-way traffic convenience without the large space required by traditional automatic swing and slide doors. Our customers have found a number of features beneficial with our automatic folding door systems:

- Barrier-free, two-way traffic to accommodate the tightest spots.
- Two- or four-panel
- Out-fold or in-fold
- The Ready-Fold series utilizes the durable Swingmaster operator used in over 300,000 North American installations.
- In case of an emergency of power failure, push the door manually in the direction of the egress and the doors will swing open.



*Ready-Fold Out-Fold Ready-Fold®, U.S. patent# 5,392,834*



# Revolving Doors



UniTurn™



RD4A-1



RD4M  
Manual  
Revolver

**For more information on our revolving doors, see Sweets section #084233 or call 1-866-BESAM-US.**

## Besam – Your One-Stop Shop for Automatic Revolving Doors

Not only does Besam design and build automatic doors, we also have over 9,000 revolving door installations worldwide. Besam has built the foundation for superior performance, quality and reliability in revolving door packages.

### Two-Wing Revolving Doors – A Turn Towards Green

Besam's UniTurn series has greater flexibility due to the elimination of the center shaft. As a result, the compartment area is much larger and capable of accommodating shopping and luggage carts, wheelchairs, stretchers and even crowds with ease. The 18' diameter package allows a traffic capacity of up to 5,880 people per hour. A weather-tight barrier seals elements out and keeps conditioned air inside yielding greater energy savings – approximately eight times more energy efficient than automatic swinging doors.

### Three- and Four-Wing Compact for Access Control

The RD series access control revolving doors have fully automatic entrance control for both interior and exterior use. Barrier and draft-free access, noise reduction and energy efficiency are what set our revolving doors apart from conventional door packages. The RD series also allows for cost-effective alternatives to traditional security stations and monitoring systems.

### Manual Revolving Doors

Besam now offers a manual revolving door system – the RD4M. The RD4M is a 4-wing manual revolving door system that allows unencumbered access to your facility while still preserving maximum energy efficiency for your building. Dynamic aesthetics combined with superior quality make this system ideal for any commercial entryway.



1900 Airport Road • Monroe, NC 28110 USA  
Phone: 866-BESAM-US • 704-290-5520 • Fax: 704-290-5544  
www.besam.com • email: marketing@besam-usa.com

**For the name and address of your local Besam Representative please call us at 1-866-BESAM-US. Contact information is also available on our web site – www.besam.com.**

Besam follows a policy of advancements in development. For this reason specifications may be changed without notice. ©2009 Besam US Inc. • Printed in USA.

### Besam Worldwide Plant and Sales Offices

Australia • Austria • Belgium • Canada • China • Czech Republic • Denmark • Finland • France • Germany • Hungary • Ireland • Italy • Mexico • Norway • Netherlands • New Zealand • Poland • Portugal • Singapore • South Africa • Spain • Sweden • United Kingdom • USA

Bi-Way™, PowerSwing™, Ready-Fold®, Swingmaster®, UltraView™, Unislide™ and UniTurn® are registered trademarks of Besam US Inc. and may not be used without permission.

