

SUPERIOR METAL PRODUCTS COMPANY, INC.

10 73 00/SUP
BuyLine 6843

Walkway Cover Systems for Commercial, Industrial and Educational Facilities



Entrance Canopy
Tyler, TX



Rock Quarry Elementary School
Tuscaloosa, AL



Southern Research Institute
Birmingham, AL



Carr Boaz Funeral Home
Boaz, AL



Gardendale Medical Complex
Gardendale, AL



Plantside III
Louisville, KY



Ticket Booth Cover
Tuscaloosa, AL



Liberty County High School
Liberty County, GA



Aluminum Bus Shelter
Birmingham, AL



2008

Engineered Aluminum Canopies and Walkway Covers

Visit us at: www.SuperiorMetalProducts.com

116 Citation Court
Birmingham, AL 35209-6307
p. 877.445.1200
f. 205.945.5694

SUPERIOR METAL PRODUCTS COMPANY, INC.

email: canopysales@superiormetalproducts.com



**Bluffton Middle School
Bluffton, SC**

SUPERIOR PRODUCTS

1.01 DESCRIPTION OF WORK

Extent of canopies required is shown on the drawings. Included herein, but not limited to, are decking, fascia/gutter, columns, anchors, supports, and flashing.

1.02 MEASUREMENTS

Verify all measurements shown on drawings by taking field measurements to insure proper fit and attachment of all component parts.

1.03 SUBMITTALS

Provide manufacture shop drawings, including fabrication and installation details.

1.04 COORDINATION

Provide necessary anchors, blockouts, flashing and other items required to be built in ample time to avoid delays to the job.

1.05 DELIVERY & STORAGE

Deliver and store all items in protected area. Keep free of any damage. Replace any damaged items or parts at no cost to the Owner.

1.06 DESIGN PARAMETERS

Live load of canopies shall be no less than 20 p.s.f. Canopies shall comply in all respects with the International Code Council requirements for Floor, Wall and Roof systems.

1.07 ACCEPTABLE MANUFACTURER

Subject to compliance with requirements herein, provide product manufactured by Superior Metal Products Company, Inc., Birmingham, Alabama.

1.08 PRODUCTS AND MATERIALS

Consult Superior Metal Products' Architect Manual and design staff for detailed specifications of materials and products.

1.09 INSTALLATION

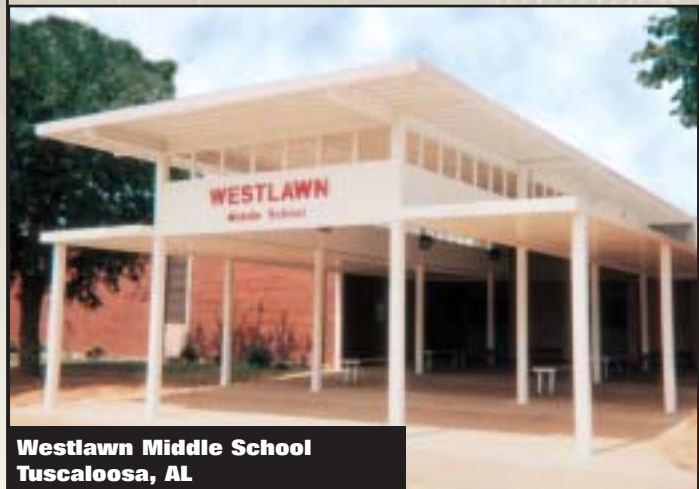
Canopies shall be installed according to approved plans and shop drawings and the entire structure shall be erected straight true and plumb in accordance with standard construction procedures. All joints and connections shall be tight and clean, and all surfaces of work left in a clean condition.

SUPERIOR QUALITY

Superior Metal Products Company, Inc. manufactures a complete line of rollformed and extruded canopies and walkway covers. From the smallest door canopy to the largest walkway cover, all materials are fabricated in the company's Birmingham, AL facility and undergo constant inspection and quality control. Innovative mechanical assembly procedures allow economical shipping to all points serviced by common carrier freight lines. Extruded systems are available in both painted and anodized finishes to harmonize with the widest range of architectural designs. Rollformed components are manufactured from only the highest quality, pre-tested and approved by independent registered structural engineers and are in compliance with the requirements of the International Code Council. Detailed shop drawings bearing the seal of a Registered Engineer are provided when required, and specification, design, and installation assistance is never more than a phone call away. Visit the company's web site at www.superiormetalproducts.com.



**U.S. Post Office
Prattville, AL**



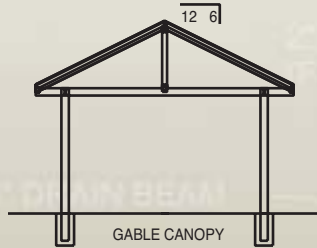
**Westlawn Middle School
Tuscaloosa, AL**

CONFIGURATIONS

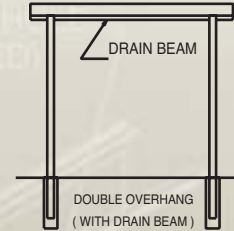
STANDARD



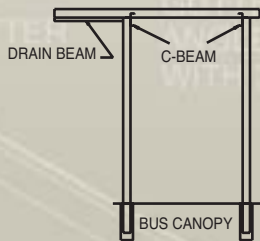
GABLE CANOPY



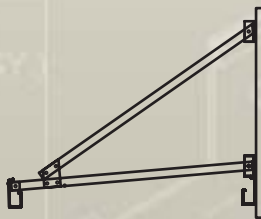
DOUBLE OVERHANG



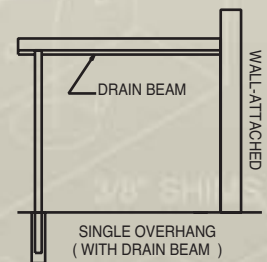
BUS CANOPY



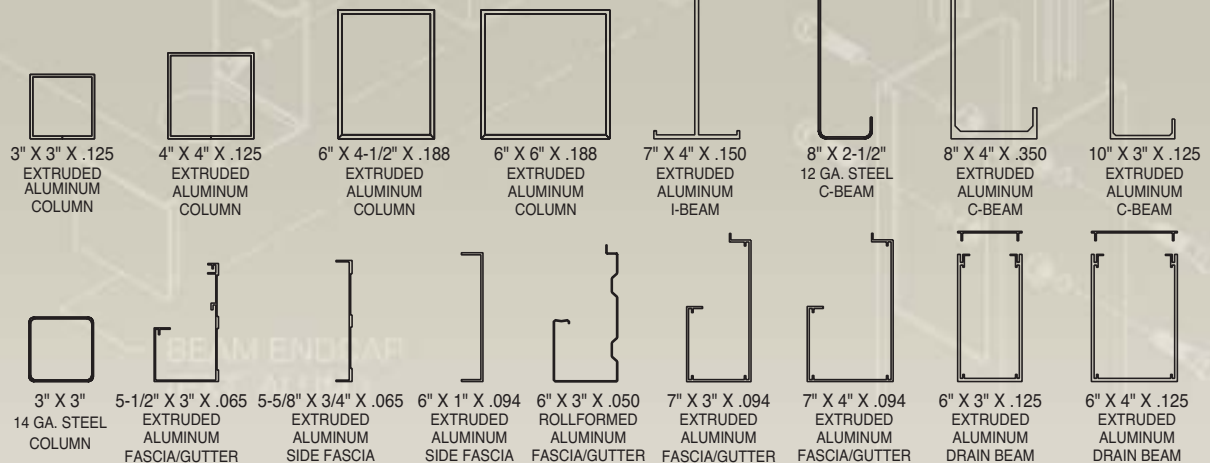
OVERHEAD SUPPORT



SINGLE OVERHANG

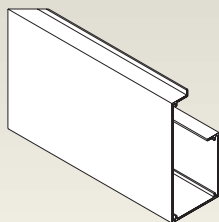


STRUCTURAL COMPONENTS

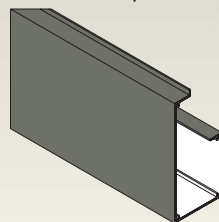


STANDARD COLORS

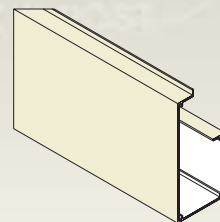
Pictured: Superior's 7" X 3" Extruded Aluminum Fascia/Gutter



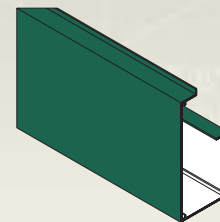
WHITE



BRONZE



CREAM



GREEN

Clear anodized and Bronze anodized also available. Call for information on additional colors and availability.

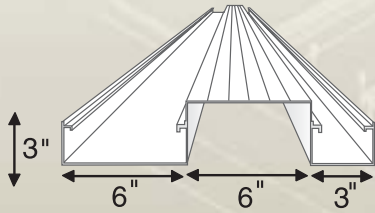
Please Note: Superior cannot guarantee an exact color match with this sample chart and actual materials. Some color deviation is normal and expected.

SUPERIOR METAL PRODUCTS COMPANY, INC.

email: canopysales@superiormetalproducts.com

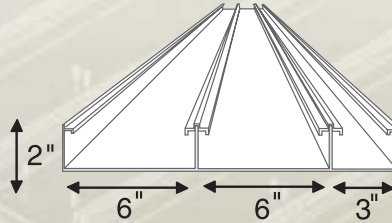
SUPERIOR Extruded Decking

ECONO DECKING



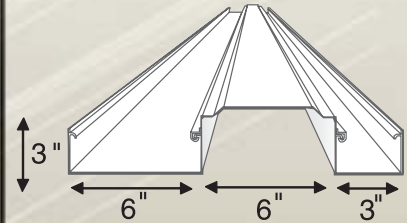
.062 6063-T6 extruded aluminum decking sections offer maximum economy for spans to 14' 8" at 20 p.s.f. live load L/60 deflection.

FLUSH DECKING



.062 6063-T6 extruded aluminum decking sections provide smooth underside to decking system with no exposed openings for spans to 16' 2" at 20 p.s.f. live load and L/60 deflection.

LONG SPAN DECKING



.075 6063-T6 extruded aluminum decking sections allow increased column of bent spacing for spans to 20' 0" at 20 p.s.f. live load limiting deflection to L/60. REF: SBCCI Compliance Report #8887, 12/1/88.

8" X 4" X .350 EXTRUDED ALUMINUM C-BEAM (6063 - T6)

Proj.	20 psf	30 psf	40 psf
5'	34'0"	28'3"	24'9"
	(34'8")	(30'8")	(27'10")
6'	31'0"	25'10"	22'7"
	(32'7")	(28'10")	(25'5")
7'	28'9"	23'11"	20'11"
	(30'11")	(26'11")	(23'6")
8'	26'11"	22'4"	19'7"
	(29'7")	(25'2")	(22'0")
9'	25'4"	21'1"	18'5"
	(28'6")	(23'9")	(20'9")
10'	24'1"	20'0"	17'6"
	(27'1")	(22'6")	(19'8")
11'	22'11"	19'1"	16'8"
	(25'10")	(21'6")	(18'9")
12'	21'11"	18'3"	16'0"
	(24'8")	(20'7")	(18'0")
13'	21'1"	17'7"	15'4"
	(23'9")	(19'9")	(17'3")
14'	20'4"	16'11"	14'9"
	(22'10")	(19'0")	(16'8")
15'	19'8"	16'4"	14'3"
	(22'1")	(18'5")	(16'1")

SPANS IN PARENTHESIS ARE REACHED USING 6005-T5

10" X 3" ALUMINUM C-BEAM

Proj.	10 psf	20 psf	30 psf	40 psf
6'	25'4"	23'6"	19'4"	16'10"
8'	23'5"	20'5"	16'9"	14'7"
10'	21'9"	20'4"	15'0"	13'1"
12'	20'0"	18'7"	13'9"	11'11"
14'	17'8"	17'2"	12'9"	11'1"

5.5" EXTRUDED GUTTER (.065)

Proj.	10 psf	20 psf	30 psf	40 psf
7'	14'4"	11'4"	9'4"	8'2"
8'	13'9"	10'8"	8'9"	7'7"
10'	12'10"	9'6"	7'10"	
11'	12'5"	9'1"	7'6"	7'6"
12'	12'1"	8'9"	7'2"	
13'	11'7"	8'4"		
14'	11'2"	8'1"		

7" EXTRUDED GUTTER (.094)

Proj.	10 psf	20 psf	30 psf	40 psf
4'	22'3"	19'9"	16'4"	14'3"
5'	21'0"	17'8"	14'7"	12'8"
6'	20'0"	16'1"	13'3"	11'7"
7'	19'2"	14'11"	12'3"	10'8"
8'	18'5"	13'11"	11'6"	10'0"
9'	17'9"	13'2"	10'10"	9'5"
10'	17'2"	12'6"	10'3"	8'11"
11'	16'5"	11'11"	9'9"	
12'	15'9"	11'5"		
13'	14'11"	10'11"		
14'	13'11"	10'6"		



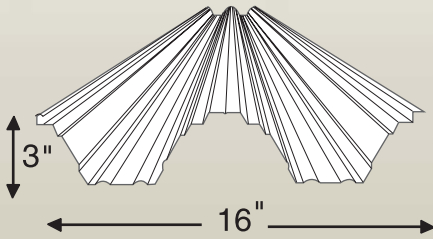
Beaufort High School
Beaufort, SC.



W.T. Sampson High School
Guantanamo Bay, Cuba

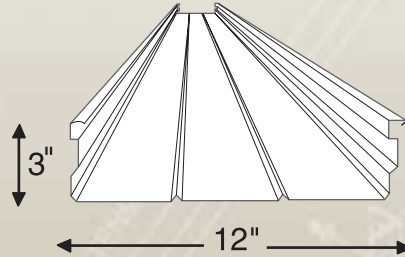
SUPERIOR Rollformed Panels

16" X 3" W-PAN



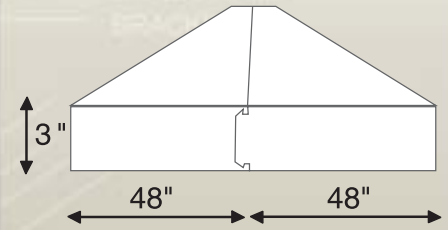
3005-H28 rollformed aluminum w-pans provide maximum coverage per dollar. Available in .018, .025 and .032 metal thickness for spans to 14' 1" at 20 p.s.f. live load and L/60 deflection.

12" X 3" FLAT PAN



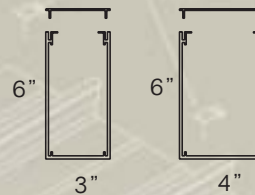
3005-H28 rollformed aluminum flat pans provide smooth underside. Available in .025 and .032 metal thickness for spans to 12' 1" at 20 p.s.f. live load and L/60 deflection.

INSULATED ROOF



Embossed .024 aluminum coil laminated to expanded polystyrene core for spans to 15' 10" at 20 p.s.f. live load and L60 deflection for 3" thick panel.

.125 EXTRUDED ALUMINUM DRAIN BEAMS



NOTE:
Spans in parenthesis are for 6"X 4" drain beam.

Proj.	20 psf	30 psf	40 psf
4'	16'4"	13'7"	11'10"
5'	(16'8")	(13'11")	(12'2")
6'	14'8"	12'2"	10'8"
7'	(15'0")	(12'5")	(10'11")
8'	13'5"	11'1"	9'9"
9'	(13'8")	(11'5")	(9'11")
10'	12'5"	10'4"	9'0"
11'	(12'8")	(10'7")	(9'3")
12'	11'7"	9'8"	8'5"
13'	(11'11")	(9'10")	(8'7")
14'	11'0"	9'1"	7'11"
15'	(11'3")	(9'4")	(8'2")
16'	10'5"	8'8"	7'6"
17'	(10'8")	(8'10")	(7'9")
18'	9'11"	8'3"	7'2"
19'	(10'2")	(8'5")	(7'4")
20'	9'6"	7'11"	6'10"
21'	(9'9")	(8'1")	(7'1")
22'	9'2"	7'7"	6'7"
23'	(9'4")	(7'9")	(6'9")
24'	8'10"	7'4"	6'5"
25'	(9'0")	(7'6")	(6'9")
26'	8'6"	7'1"	6'2"
27'	(8'9")	(7'3")	(6'4")
28'	8'3"	6'10"	6'0"
29'	(8'5")	(7'0")	6'1"
30'	8'0"	6'8"	5'9"
31'	(8'2")	(6'9")	(5'11")
32'	7'9"	6'5"	5'8"
33'	(7'11")	(6'7")	(5'9")
34'	7'7"	6'3"	5'6"
35'	(7'9")	(6'5")	(5'7")
36'	7'5"	6'1"	5'4"
37'	(7'7")	(6'3")	(5'6")

HD/OH SUPPORT

Proj.	20 psf	30 psf	40 psf
4'	19'8"	13'4"	10'0"
5'	15'8"	10'8"	8'0"
6'	13'2"	8'10"	6'8"
7'	11'2"	7'7"	5'8"
8'	9'10"	6'7"	5'0"
9'	8'8"	5'11"	4'5"
10'	7'10"	5'3"	4'0"
11'	7'1"	4'10"	3'11"
12'	6'2"	4'2"	3'8"



Coker County Field House
Coker County, TN



Gardendale Medical Complex
Gardendale, AL

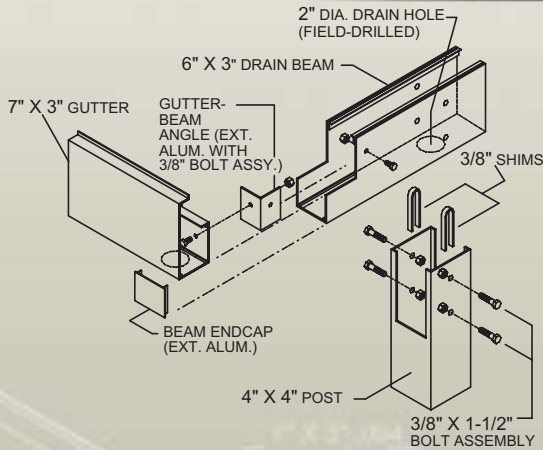
SUPERIOR METAL PRODUCTS COMPANY, INC.

email: canopysales@superiormetalproducts.com

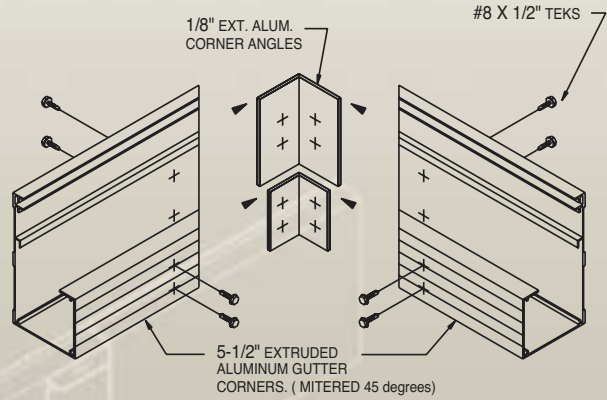
Call Toll Free: 1.877.445.1200 • Fax: 1.205.945.5694

TYPICAL APPLICATIONS

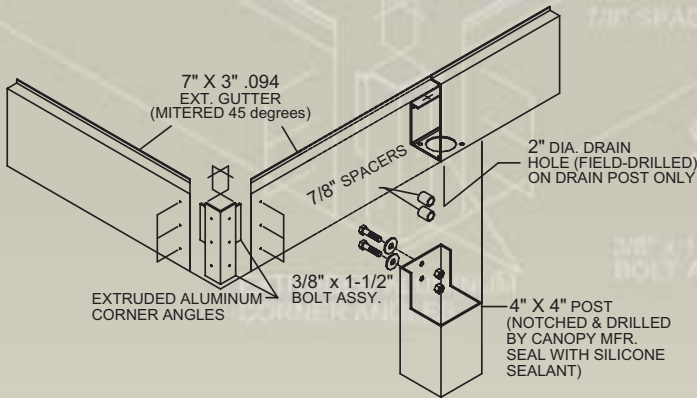
TYPICAL MECHANICAL BENT



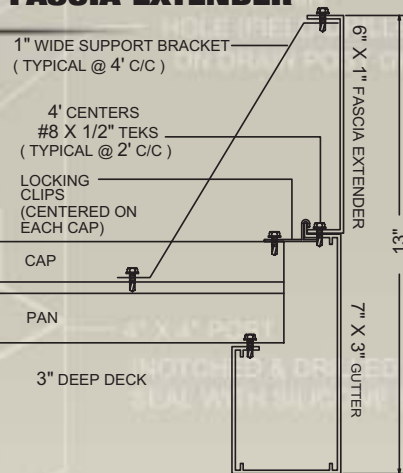
MITRED CORNER



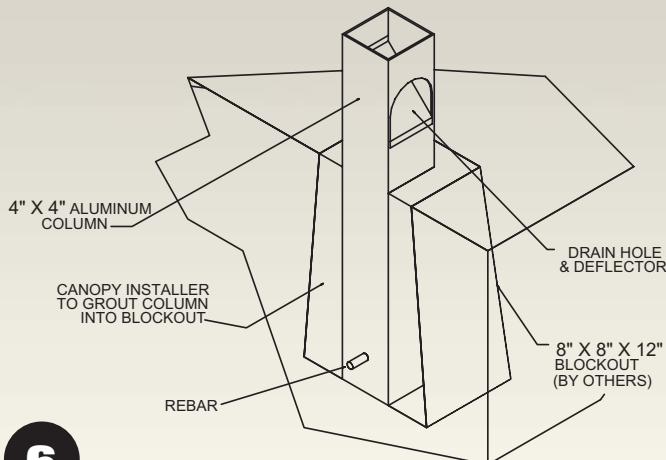
TYPICAL COLUMN @ FASCIA



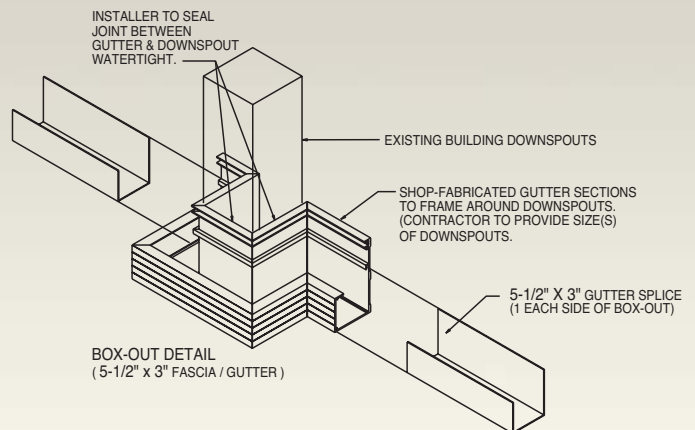
OPTIONAL FASCIA EXTENDER



TYPICAL BLOCKOUT

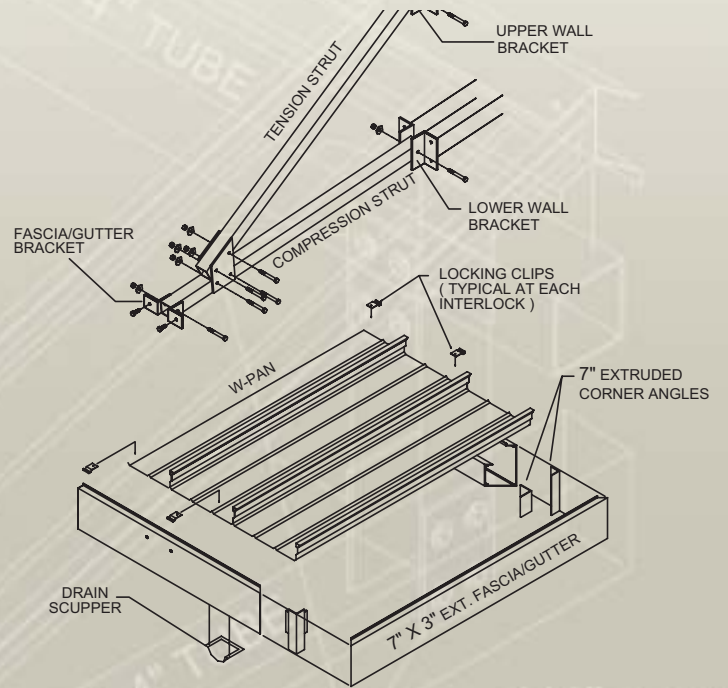
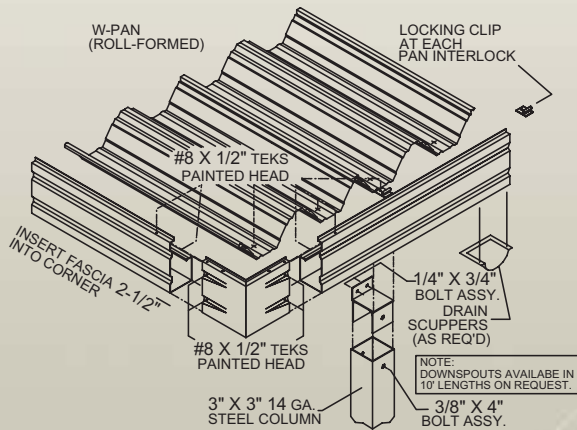


BOX OUT DETAIL

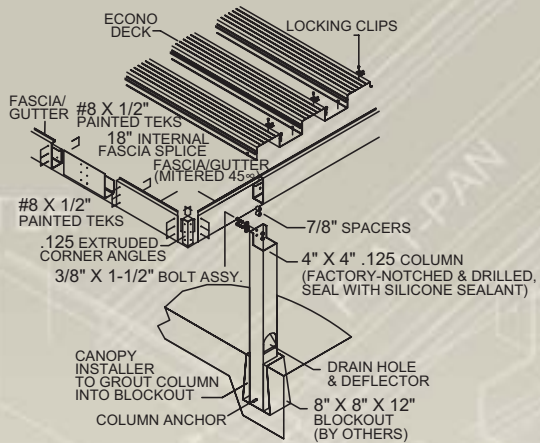


see us at
Sweets.com

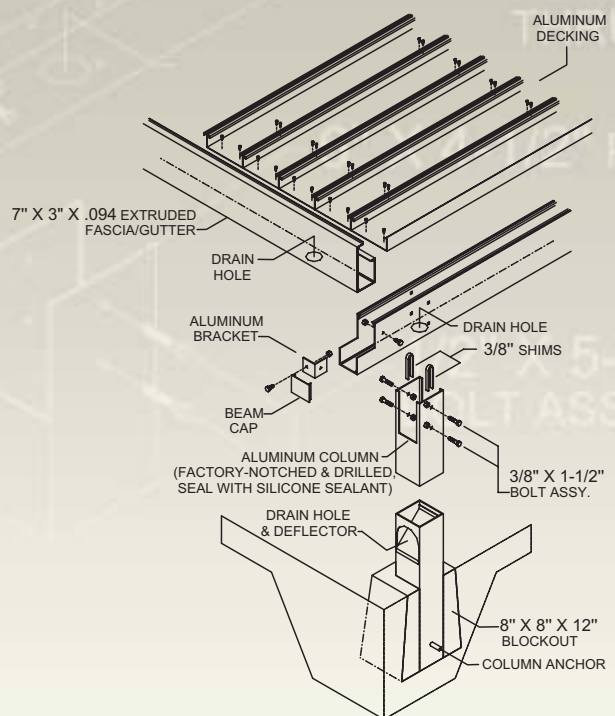
ROLLFORMED CANOPY ASSEMBLY OVERHEAD SUPPORT



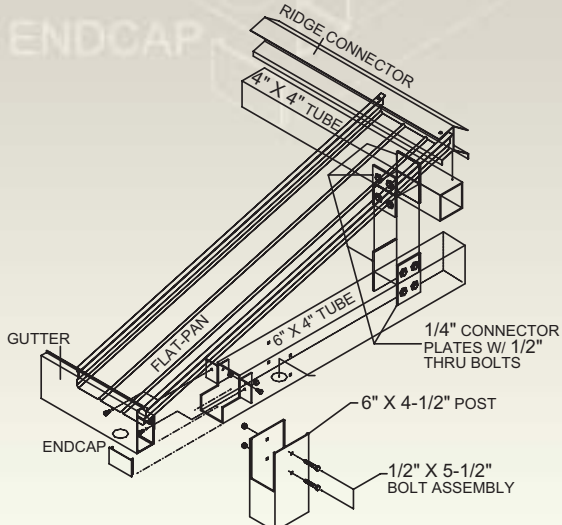
CANOPY ASSEMBLY



FLUSH DECK ASSEMBLY



GABLE CROSS SECTION





- Aluminum rollformed or extruded fascia/gutter.
- Baked-on paint finish for years of maintenance free beauty.
- 10 year Limited Warranty on material and finish.
- Every cover is custom designed and fabricated to your particular needs.
- Protect your vehicles and outdoor furniture.



- Individually designed for your home.
- Aluminum flat pan roof panels for beauty and strength.
- Your choice of 18" aluminum kickplates or none.
- Aluminum 2"X 2" horizontal rail, wall studs and corner posts for strength.

SUPERIOR ULTRAVIEW™ SUNROOMS



- Custom designed for your home and landscape.
- Vinyl horizontal sliding windows feature double-pane insulated and tempered safety glass.
- Baked enamel aluminum framing for low maintenance.
- Both window sashes are removable and operate left to right and right to left.
- Insulated walls tested up to 147 MPH wind speeds.

- 3-1/4" thick insulated wall panels provide R-13 thermal rating.
- Roof panel has R-13 Thermal Resistance value for energy savings.
- 10 year Warranty on enclosure and Lifetime Warranty on glass breakage and prolonged internal fogging.
- Optional fan beam allows for installation of fan and/or light fixture.
- Wall panels available in white or tan fiberglass and white or tan embossed aluminum.
- Electrical baseway system available.
- Tempered glass kickplates and transoms available.

MEDALLION SUNROOMS



- Insulated, tempered glass-standard for safety!
- Each window is a full 5' high for expanded viewing area.
- Both window sashes operate right to left and left to right.
- Both window sashes are removable.
- Roof has R-13 Thermal Resistance value for energy savings.

- Optional fan beam allows for installation of fan and/or light fixture.
- 2" thick insulated wall panels provide R-8.5 thermal rating.
- 10 year Warranty on enclosure and Lifetime Warranty on glass breakage and prolonged internal window fogging.
- All structural components constructed from 6063 T5 aluminum alloy with baked on enamel paint.
- Electrical baseway system available.

STORM AND SCREEN DOORS



- Full 1-1/4" thick extruded aluminum mainframe.
- 1/8" or 3/16" tempered safety glass.
- Enamel finish: bronze, cream, white or tan.
- Solid brass hardware, lever latch, keyed deadbolt (outside) thumb turn bolt (inside).
- Five heavy duty self lubricating hinges with bronze bushings.
- Brass-tone adjustable bottom expander with vinyl sweep.

VINYL WINDOWS



- All welded frame, welded sashes.
- 3/4" sealed insulated glass with DuraSeal™ spacer.
- Double Hung sashes tilt in and Slider sashes remove for safe, easy cleaning from inside.
- Limited Lifetime Warranty.
- Available in white and beige.

- All windows are custom manufactured to your exact opening measurements to ensure a perfect fit and care free operation.



SUPERIOR METAL PRODUCTS COMPANY, INC.

116 Citation Court

Birmingham, Alabama 35209-6307

Toll Free: 1.877.445.1200 • fax: 205.945.5694

email: canopysales@superiormetalproducts.com



**MADE WITH PRIDE
IN THE USA**

North Little Rock, AR • Knoxville, TN • Austin, TX



Printed in the U.S.A.