



# FLEX-TRED

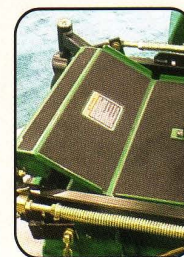
by Wooster Products, Inc.

## The Instant, Self-Adhesive Anti-Slip Safety Surface.

The fast, easy and economical way to prevent slips and falls.  
Exceeds OSHA, ADA and ASTM requirements.

### Product Safety

Improve the safety, performance and the operating ease of your product with **Flex-Tred**® anti-slip tape. Reduce your liability risk! Application is fast and easy – a simple “peel and stick” is all that’s required. We can supply custom die cuts to fit your application and a variety of colors to enhance aesthetics.



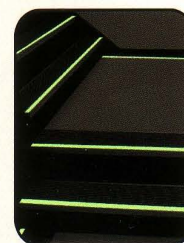
### Workplace & Walkway Safety

Help reduce the risk of lost time from accidents due to slips and falls and help meet OSHA requirements by applying **Flex-Tred**® to walkway and step surfaces. **Flex-Tred**® can reduce the risk even in the presence of water, oil, or grease. Our “Safety Yellow” color can be used to emphasize caution in specific areas.



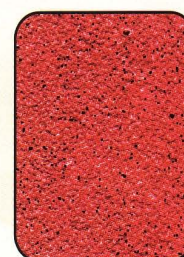
### Photoluminescent Guidance

**Flex-Tred**® **NITEGLOW**® is an anti-slip photoluminescent safety surface designed to install quickly and provide durable pedestrian safety and guidance in evacuations. Provide a solid and continuous stripe of photoluminescent material on the lead edge of steps, around landings and through hallways and doorways.



### Colors

A variety of colors are available to coordinate with your product or decor, or to provide contrast. No other manufacturer offers the spectrum of colors available from Wooster Products. (See color chart on back.)



# Custom Shapes

# Many Colors &

## GENERAL PROPERTIES

### • Flexure

**Flex-Tred®** bends over sharp 90° angles without fracture. Repeated bending without cracking or failure of bond.

### • Temperature Limits

Applied **Flex-Tred®** has a useful temperature range of -40°F to 220°F. However, limited exposure to temperatures above 220°F will not harm Flex-Tred®.

### • Steam Cleaning

Applied **Flex-Tred®** will tolerate steam cleaning.

### • Detergent Cleaning

Applied **Flex-Tred®** will tolerate detergent cleaning.

### • Environmental Resistance

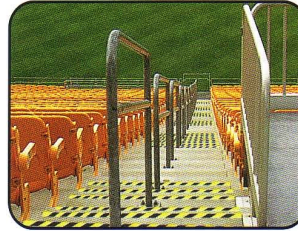
**Flex-Tred®** is essentially unaffected by climactic exposure and mild acid or alkali exposure under normal conditions.

### • Shelf Life

**Flex-Tred®** shelf life is two years minimum.

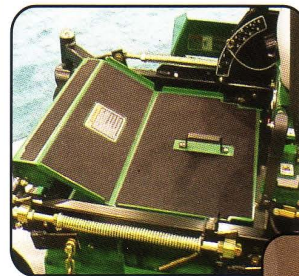
## APPLICATIONS

Anywhere You Need an Anti-Slip Surface



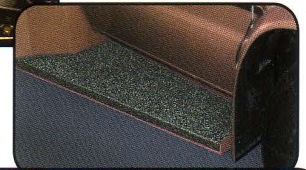
### Workplace

- around work benches • laundries
- machinery work stations • kitchens
- platforms • scaffolds • cherry pickers
- boiler and furnace areas • etc.



### Product

- recreational vehicles (campers, motor homes, trailers)
- exercise equipment
- lawn and garden equipment
- lift trucks • ladders • trucks • construction equipment
- farm tractors and equipment • playground equipment
- skateboards • skis • spas • utility vehicles
- boats • aircraft • baggage handling equipment
- snowmobiles • golf carts
- bumpers • running boards • etc.



### Walkways

- stairs • entrances • ramps • docks • pool areas
- porches • decks • balconies • ski-lift access areas
- catwalks • patios • galleys • etc.



## WOOSTER FLOOR PREP

Wooster Floor Prep is an effective alkaline cleaning compound recommended for cleaning all types of interior and exterior floor surfaces, prior to applying Flex-Tred®. Coverage: Each 5 oz. bottle will clean approximately 50 sq. ft.

## FLEX-TRED® Improves Coefficient of Friction of Most Surfaces in Wet or Dry Use

Coefficient of friction tests run per specification Mil-D-17951C (ships) using rubber test vehicle. Higher numbers indicate better coefficient of friction.

### COMPARISON OF VARIOUS SURFACES: STATIC COEFFICIENT OF FRICTION

	Dry Surface Test Results	Wet Surface Test Results		Dry Surface Test Results	Wet Surface Test Results
<b>FLEX-TRED Surfaces</b>			<b>Other Surfaces</b>		
Flat Black Coarse	1.33	1.21	Ribbed Rubber	.89	.76
Sparkle Black	1.24	1.06	Scotch Tred	.69	.50
Blue Medium	1.29	1.09	Painted Steel	.77	.69
Flat Black Fine	1.37	1.17	Textured Vinyl	.80	.64
Ocean Grey	1.30	1.02	Ribbed Vinyl	.85	.72

Flex-Tred meets or exceeds specifications for: Mil-D-17951E (ships); Motor Vehicle Safety Standard No. 302; Walkway Matting, Non-slip Mil-W-5044C, Type IV, ADA, ASTM and OSHA.

# Textures A Variety of Applications

## STANDARD ROLL SIZES

Custom sizes for rolls and die cuts available by request.

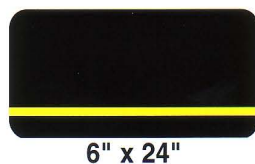
3/4" x 60 ft. - packed	16 rolls per carton
1" x 60 ft. - packed	12 rolls per carton
2" x 60 ft. - packed	6 rolls per carton
3" x 60 ft. - packed	4 rolls per carton
4" x 60 ft. - packed	3 rolls per carton
6" x 60 ft. - packed	2 rolls per carton
8" x 60 ft. - packed	3 rolls per carton
12" x 60 ft. - packed	1 roll per carton
18" x 60 ft. - packed	1 roll per carton
24" x 60 ft. - packed	1 roll per carton



## STANDARD DIE-CUT SIZES

All standard sizes are packed 50 pieces each carton.

### STRIPS AND CLEATS STANDARD CUT SIZES:



Custom Sizes On Request • Standard tolerance + - 1/16"

## CUSTOM DIE CUTTING

Inexpensive special die-cut shapes are readily available. Special cut-outs, product identification, logos, and directions can be supplied in just the right shapes so all you do is peel and stick in place.



## BENEFITS

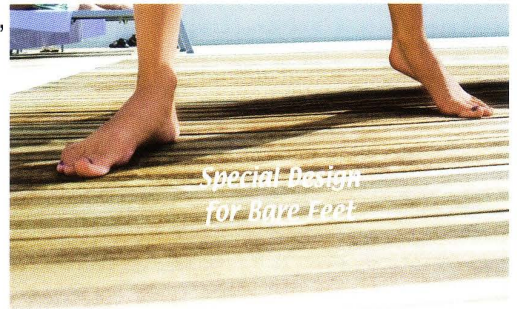
- **Anti-Slip**  
From any direction wet or dry, cuts risk of slips or falls.
- **Reduces liability exposure**
- **Quick & Easy to Install**  
Installs in seconds on any dry, clean, smooth surface. Just remove the protective liner from the underside to expose the special pressure-sensitive adhesive, then apply in the proper position and roll or press in place.
- **Economical**
- **Resistant to Solvents**
- **Durable**  
Long wearing
- **Super Adhesion**  
Each piece has a heavy coating of pressure-sensitive adhesive specially formulated for a superior bond to practically any clean, dry, smooth surface.
- **Die Cuts**  
Available to fit your application.
- **Colors**  
Available to complement your product or decor.
- **Indoor and Outdoor Applications**
- **Quality Construction**
- **Bare Foot Applications**

# FLEX-TRED

by Wooster Products, Inc.

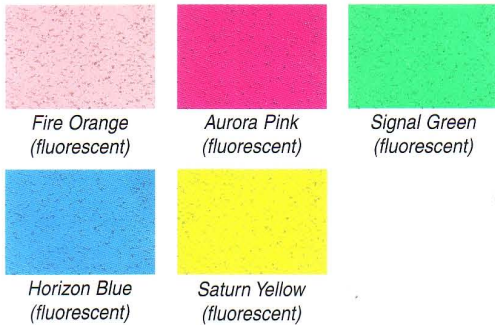
## Marine and Pool Colors

With a special design for bare feet, Flex-Tred's abrasive surface is adhesive backed, economical and easily installed. There are many colors to choose from including safety strips, camouflage, and glow-in-the-dark. Special shapes available for OEMs. Ready for immediate use on pool decks, ramps, pleasure crafts, fishing docks, and boats. Order from our standard size rolls, standard die-cut sizes, or custom order your own die cut shape.



## Fluorescent Colors

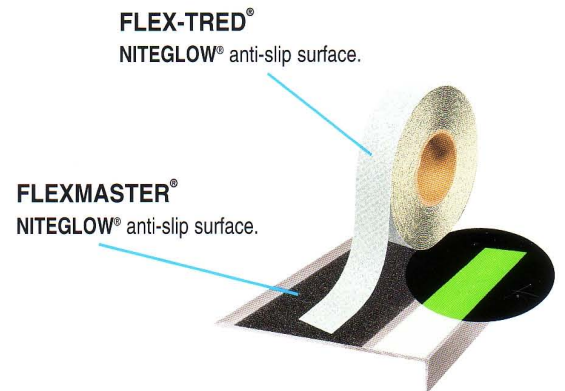
Glow under black lights



Actual tread color may vary slightly from printed sheet. Request actual tread sample if color is critical.

## Photoluminescent

Glow-in-the-dark



## Flex-Tred Color Chart

Color coordinate with Flex-Tred – key to decor – show contrast



\*Actual color may vary slightly from printed sheet. Request actual color sample if color is critical. Black is standard and will be furnished unless a color is specified.

**WP** **Wooster Products Inc.**  
 1000 Spruce Street, P.O. Box 6005, Wooster, Ohio 44691-6005  
 Call Toll Free 1-800-321-4936  
 Phone 330-264-2844 • Fax 330-262-4151  
 Web-Site: <http://www.wooster-products.com>  
 E-Mail: [Sales@wooster-products.com](mailto:Sales@wooster-products.com)

FX 008

**IMPORTANT NOTICE TO PURCHASER: THE FOLLOWING IS MADE IN LIEU OF ALL WARRANTIES, EXPRESSED OR IMPLIED, INCLUDING WARRANTIES OF MERCHANTABILITY AND FITNESS FOR A PARTICULAR PURPOSE:** Purchase or use of this product constitutes an agreement with Seller and Manufacturer that, if the product proves to be defective or in any way unsuitable, Seller's and Manufacturer's limit of liability for all damages, including but not limited to incidental or consequential damages, and User's or Purchaser's exclusive remedy, regardless of legal theory, including theories of breach of warranty, negligence and strict liability, shall be to receive, at Seller's or Manufacturer's option, repair of the defective product, an equivalent quantity of replacement product or a refund of the purchase price.