

"SERVING YOU FOR OVER 88 YEARS" 05 55 00/WON
BuyLine 0228



ANTI-SLIP SAFETY STAIR AND WALKWAY PRODUCTS BY 'WOOSTER'

MAKE EVERY STEP A SAFE ONE!



WOOSTER PRODUCTS INC

1000 Spruce Street, P.O. Box 6005, Wooster, Ohio 44691

Phone: (330) 264-2844 • Toll Free Phone: 1-800-321-4936 • Fax: (330) 262-4151

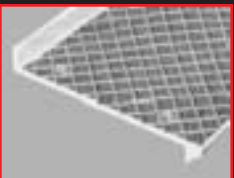
FOR QUICK PRICE QUOTATION, DESIGN RECOMMENDATION, ANSWERS TO YOUR QUESTIONS
OR LOCAL REPRESENTATION: PHONE TOLL FREE! 1-800-321-4936

www.wooster-products.com

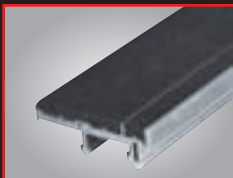
No. 509
2009 CATALOG



ALUMOGRIT® FERROGRIT®
Safety Treads ... pg. 4



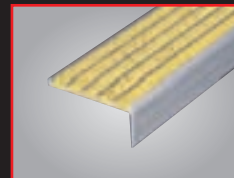
ALUMOGRIT® FERROGRIT®
Structural Treads ... pg. 5



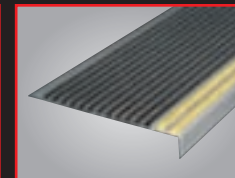
SPECTRA®
Replaceable nosing ... pg. 6



SPECTRA®
Safety Treads ... pg. 7



SUPERGRIT®
Safety Treads ... pg. 9



STAIRMASTER®
Renovation Treads ... pg. 11



FLEX-TRED®
Safety Treads ... pg. 14

WP New Photoluminescent Products

Wooster Products, Inc. **NITEGLOW**® (glow-in-the-dark) products have been designed to meet or exceed ASTM and New York's photoluminescent specifications. In addition to providing photoluminescent exit path markings when the lights go out, Wooster Products, Inc. **NITEGLOW**® treads and nosings offer excellent anti-slip characteristics.

NITEGLOW® FEATURES

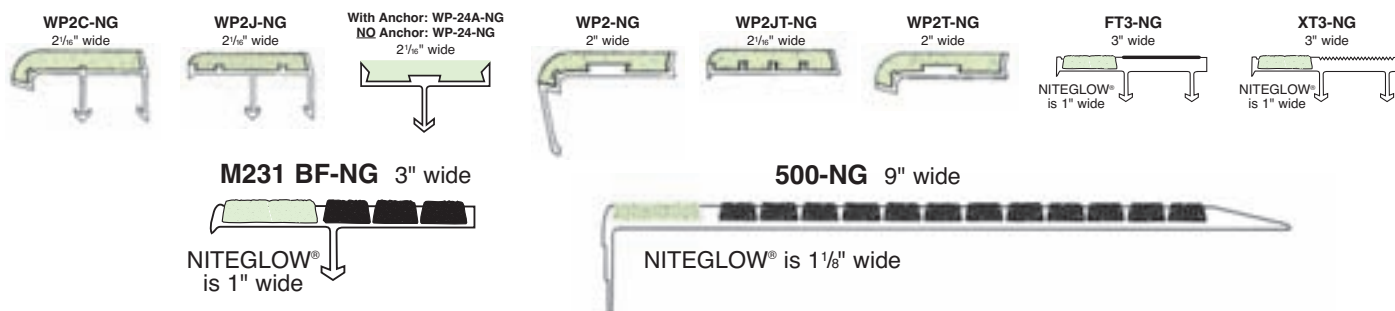
Our pigment is *embedded* in a hard epoxy mixture, it is *not* just a thin adhesive tape.



- Slip-resistant over entire photoluminescent area
- Labeling for individual pieces showing MEA approval is available
- Recharged by any light source, natural or artificial, indefinitely
- **NITEGLOW**® stair nosings have a brightness rating of:
31 mcd/m² at 10 min., 9 mcd/m² at 60 min., 6 mcd/m² at 90 min.

Glow in the dark treads are not designed to provide enough light to illuminate a dark egress path, but rather to provide luminescent outlines of the egress stairs.

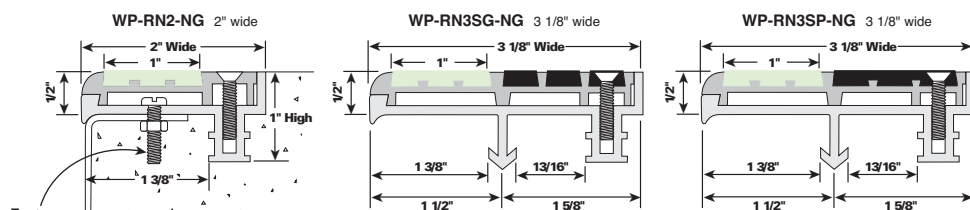
NITEGLOW® MEA Approved, Meets OSHA and ASTM Requirements



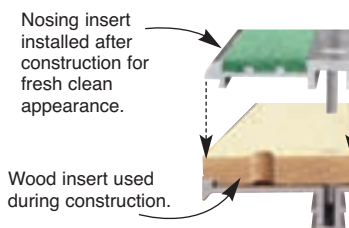
Our New York City MEA numbers are: MEA 328-05-M, MEA 328-05-M VOLII, MEA 328-05-M VOL3

NITEGLOW® 2-STAGE STAIR NOSINGS

- Fast easy replacement if damaged
- Visual appearance and durability
- Secure anchorage
- Wood insert for construction phase
- Steel pan or poured concrete steps
- Indoor or outdoor use
- Non combustibility
- Heavy pedestrian traffic use
- Maximum length 8 feet



All 2-Stage nosings are available in standard colors.



All of these products have been tested and approved for: Brightness rating: ISO 17398:2004; Washability: ASTM D 4828-1994 (2303); Toxicity Bombardier: SMP 800-C; Radioactivity: ASTM D 3648-2004; Flame Spread: ASTM D 635-2003

INDEX

ANTI-SLIP SURFACE COVERINGS	
Epoxy WP-70	13
Safe-Stride® Paint	13
Walk-A-Sured Epoxy	13
Flex-Tred® Press-Down Treads	14
CURB BAR	4
FASTENERS AVAILABLE	12
INSTALLATION DETAILS	12
INSTALLATION TIPS	3, 12

NITEGLOW®	2
PLATFORMS,	
FLOOR PLATES	5
PROTECTIVE TAPE	12
RENOVATION	10-11
SPECIFICATIONS	
Cast	3
Flexmaster	10
Spectra®	6
Supergrit®	8

STAIR TREADS, NOSINGS	
Cast	4
For OSHA Barrier-free	7, 9
Spectra®	6, 7
Supergrit®	8-10
STRUCTURAL TREADS	
Cast	5
THRESHOLDS	5

- Maximum Durability in Rough Use
- Indoor or Outdoor Use
- Resistance to Unusually Corrosive Environments
- Anti-Slip Safety Properties
- Ready to Install Convenience
- New Construction or Renovation

TREADS, NOSINGS AND THRESHOLDS FOR PROTECTION AND LONG WEAR



FERROGRIT® STRUCTURAL TREADS

ABRASIVE CASTINGS SPECIFICATION:

Provide Alumogrit® or Ferrogrit® type _____, size _____, safety treads/nosings as manufactured by Wooster Products Inc for interior and exterior stairs.

- Abrasive shall be #20 virgin grain Aluminum Oxide (AL₂O₃) abrasive, integrally cast into the walking surface to a minimum depth of 1/32 inch (.79 mm).
- Safety nosings up to 6" (152.4 mm) deep with cross-hatched surface being installed into wet concrete shall have a feature strip along the back edge.
- Concealed type anchors shall be slotted rivet type, integrally cast into the body of the nosing a minimum of 3/8 inch (9.53 mm). (Not mushroom type.)
- Cast metals used shall conform to the following specification:
 - **Alumogrit®** (Abrasive cast aluminum): No. 43 prime and secondary ingot; low copper content; corrosion-resistant.
 - **Ferrogrit®** (Abrasive cast iron): Class 20 iron; high silicon; machinable, hypereutectic.
- Any holes or countersinks shall be machine-made, cored holes or countersinks are not acceptable. Screwheads shall not protrude above tread surface.
- All metal types shall have shot-blasted finish; Ferrogrit® treads and nosings to have one coat shop-black paint.
- Cross hatching and fluting shall be 1/16 inch (1.59 mm) deep minimum and shall be clean and well defined; treads and nosings shall be manufactured, packed and shipped so as to arrive at the jobsite in good condition.
- Nosings shall terminate not more than 4" (101.6 mm) from ends of steps for poured concrete stairs; for concrete-filled steel pan stairs, nosings shall be full length of steps, less 1/8" (3.05 mm) clearance.

Note: Safety nosings going into new poured concrete or cement fill shall be installed before "Initial Set" of the concrete or cement occurs.

NOTE: Thicknesses are minimum for casting purposes and not always sufficient for structural strength. Where width exceeds 18" (457.2 mm), maximum length 6'0" (1.83 m). Where width exceeds 38" (965.2 mm), maximum length 5'0" (1.52 m). Color may vary from piece to piece for all metals. Cross-hatched, or flutes may not match when multiple sections are used.

★ When specifying nosings put a note ★ in Division 3 to alert concrete contractors.

Wooster's quality cast treads, nosings and thresholds contain an even distribution of abrasive grit integrally cast into the surface for anti-slip protection and long wear. Width and length to order. Nosings that are set flush generally should be 3" (76.2 mm), 4" (101.6 mm) or 6" (152.4 mm) in width.

SURFACE: Abrasive cross-hatch is standard and will be furnished unless plain or fluted surface is specified. (Cross hatch pattern may not match up on sections being butted together.)

FASTENERS: 1/4" (6.35 mm) F.H.M. plated screws and nuts with steel wing anchors for fresh concrete are standard fasteners for nosings. Countersunk holes or concealed integral anchors are also available.

DRILLING: Standard drilling for nosings 3" (76.2 mm) in from ends and on approximate 12" (304.8 mm) centers in single, staggered or double row according to width. See page 11 for typical Anchor and Installation Details.

DO NOT predrill support structure before tread installation.

LENGTH: Up to 8'6" (2.59 m) in one piece for Alumogrit® or Ferrogrit®. These maximum lengths do not apply to structural treads or platforms. Call Wooster Products for more details on maximum structural sizes.



ALUMOGRIT® NOSING

GUIDELINES FOR THE INSTALLATION OF METAL SAFETY TREADS OR NOSINGS INTO NEW CONCRETE OR STEEL PAN-FILLED STAIRS:

- ... The use of very large aggregate in the concrete mix may make placement of the safety nosing difficult.
- ... Safety nosing placement may be difficult in concrete with very low slump.
- ... Place the concrete into the stair forms or steel pans as quickly as possible; schedule pours so as to install the metal safety nosings quickly, **before the "initial set"** of the concrete occurs.
- ... Puddle the concrete, tamp the safety nosings to insure proper concrete formation around the anchors.
- ... Remove the protective tape as soon as practical.

NOTE: Most nosings, stairtreads and other antiskid products are manufactured to order. Please contact Wooster Products Inc for current lead time. Close stairway for 24 hours after pour.



ABRASIVE CAST Safety Treads & Nosings

Specify Abrasive Castings For:

- Maximum Durability in Rough Use
- Anti-Slip Safety Properties
- New Construction or Renovation
- Resistance to Unusually Corrosive Environments
- Indoor or Outdoor Use
- Unusual Field Conditions



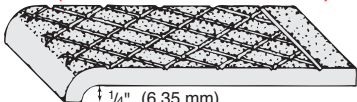
Please call Wooster Products Inc for current availability.

These sections available with concealed integral anchors, wing anchors, or countersunk holes (See page 11 for details).

POURED CONCRETE

Generally installed full step length less approx. 3" (76.2 mm) clearance at each end.

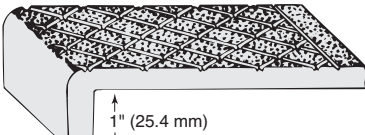
SEMI-FINISHED STOCK
(PLEASE CALL FOR AVAILABILITY)



5/16" (7.94 mm) | 1/4" (6.35 mm)

TYPE 101 – Nose 1/4" (6.35 mm) lip.

Chief use: as nosings in concrete stairs. Tread installed flush all around.

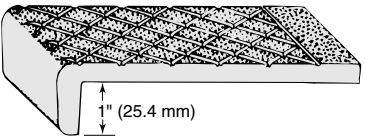


5/16" (7.94 mm) | 1" (25.4 mm)

TYPE 116 – Nose depth 1" (25.4 mm) standard.

Chief use: as nosings in concrete stairs where deeper lip is desirable.

FOR EXISTING STAIR REPAIR

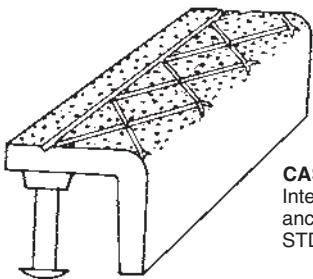


5/16" (7.94 mm) | 1" (25.4 mm)

TYPE 116A – Nose depth 1" (25.4 mm) standard.

Chief use: superimposed on existing steps for repair and modernization. Also see Type 500 on page 12.

CONCRETE CURBS



CAST:
Integral anchors
STD

TYPE 150

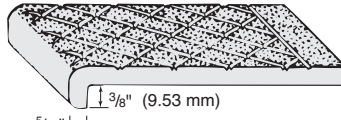
1 1/2" x 1 1/2" x 3/8"
(38.1 mm x 38.1 mm x 9.53 mm)
Maximum length 6'0" (1.83 m)

TYPE 250

2 1/2" x 2 1/2" x 1/2"
(63.5 mm x 63.5 mm x 12.7 mm)
Maximum length 6'0" (1.83 m)

STEEL PAN

Generally installed full stringer to stringer length, less 1/8" (3.05 mm) clearance.

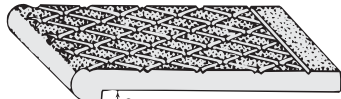


5/16" (7.94 mm) | 3/8" (9.53 mm)

TYPE 101SP

Nose 3/8" (9.53 mm).

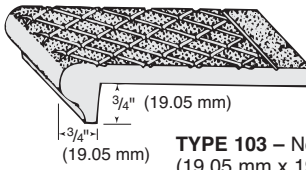
Chief use: as nosings on steel-pan concrete-filled stairs or superimposed on existing steps.



1/2" (12.7 mm) | 3/8" (9.53 mm)

TYPE 102 – Nose 1/2" x 3/8" (12.7 mm x 9.53 mm).

Chief use: as nosings on steel-pan stairs. Can also be used structurally with bent-plate risers.



3/4" (19.05 mm) | 3/4" (19.05 mm)

TYPE 103 – Nose 3/4" x 3/4" (19.05 mm x 19.05 mm).

Chief use: as structural treads with bent-plate risers or as nosings full width of stair.

MISCELLANEOUS USES



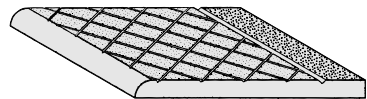
TYPE 100

Square edges. Chief uses: floor plates, trench covers, stair landing platforms, expansion joint covers.



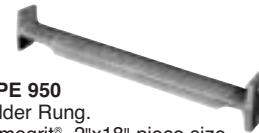
TYPE 110

Rounded edges. Chief uses: Expansion joint covers, platforms around machinery, deck treads.



TYPE 120

One edge rounded. Chief use: nosings on steel grating treads and for special conditions, usually superimposed.



TYPE 950

Ladder Rung.
Alumogrit® 2"x18" piece size

- Ferrogrit® is not recommended for corrosive or exterior environments.
- Castings are subject to usual foundry draft, tolerances and thickness $\pm 1/8"$.
- Nosings may show a parting line on the nose surface.
- Standard measurements are from top of nosing.
- Custom lengths to $\pm 1/16"$.
- Standard hole size 1/4" with countersunk hole tops.
- Standard depths; 3", 4" and 6"
- Standard drilling; 3" from ends on approximately 12" centers.
- ★ Beveled treads. Contact factory on availability per application.
- Lengths over maximum to be made in equal sections.

Non-structural stair nosings and treads for
Poured concrete and steel pan concrete-filled stairs

FERROGRIT®

5/16" thick - treads max. 6" wide - max. length 8'6"
3/8" thick - treads width to 6" - max. length 8'6"
3/8" thick - over 6" to 12" wide - max. length 6'

ALUMOGRIT®

5/16" and 3/8" thick - tread width to 6" - max. length 8'6"
3/8" thick - over 6" to 12" width - max. length 6'

Types 101, 101SP, 100, 102, 110 and 120
5/16" thick - over 6" to 12" wide - max. length 6'

Types 103, 104, 116, 116A and 105A
5/16" thick - over 6" to 9" width - max. length 6'



ABRASIVE CAST STRUCTURAL Treads, Platforms & Cast Thresholds

Specify Abrasive Castings For:

- Maximum Durability in Rough Use
- Indoor or Outdoor Use
- Resistance to Unusually Corrosive Environments
- New Construction or Renovation

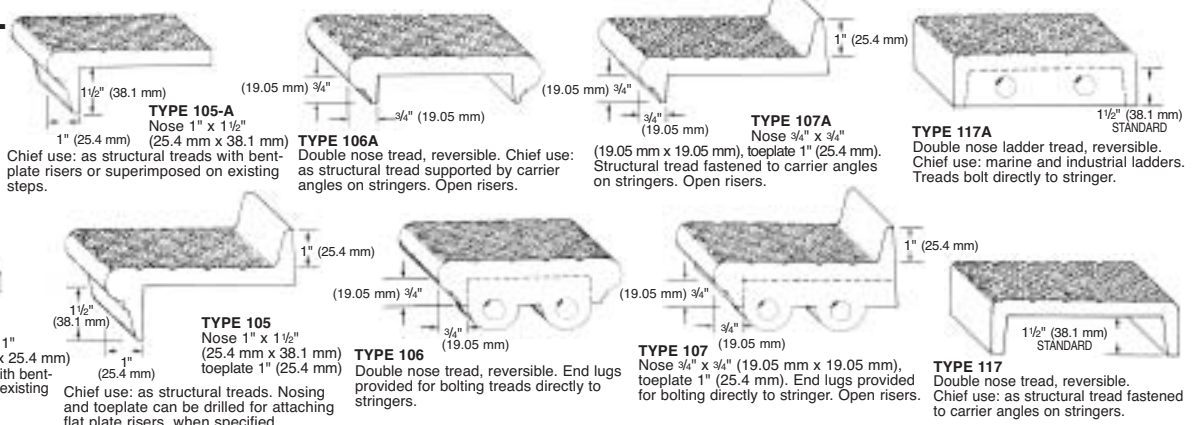
05 55 00/WON

BuyLine 0228

- Ready to Install Convenience
- Anti-Slip Safety Properties
- Unusual Field Conditions

STRUCTURAL TREADS

Structural treads available in Ferrogrit® and Alumogrit® only.



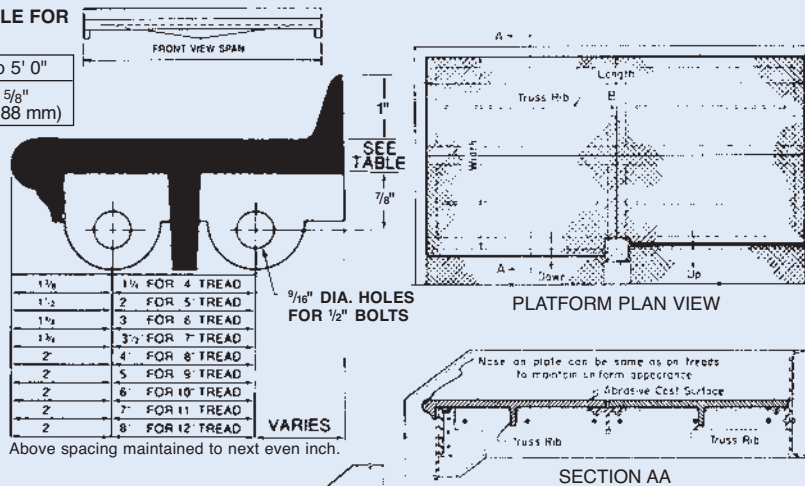
MINIMUM THICKNESS TABLE FOR STRUCTURAL TREADS

SPAN	To 4' 0"	To 5' 0"
All Metals	1/2" (12.7 mm)	5/8" (15.88 mm)

NOTE: Thicknesses are minimum for casting purposes and not always sufficient for structural strength.

STANDARD HOLE SPACING FOR TREADS WITH LUGS

Hole spacing for self-supporting treads. Maximum length 5' 0". All treads are cast with truss ribs when required.



1 3/8"	1 3/8" FOR 4 TREAD
1 1/2"	2 FOR 5 TREAD
1 3/4"	3 FOR 6 TREAD
2"	3 3/4" FOR 7 TREAD
2"	4" FOR 8 TREAD
2"	5 FOR 9 TREAD
2"	6" FOR 10 TREAD
2"	7" FOR 11 TREAD
2"	8" FOR 12 TREAD

VARIES

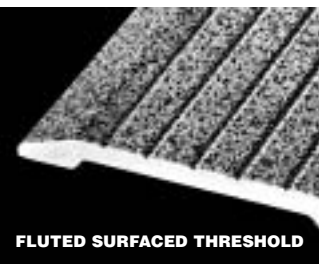
Above spacing maintained to next even inch.

NOTE:

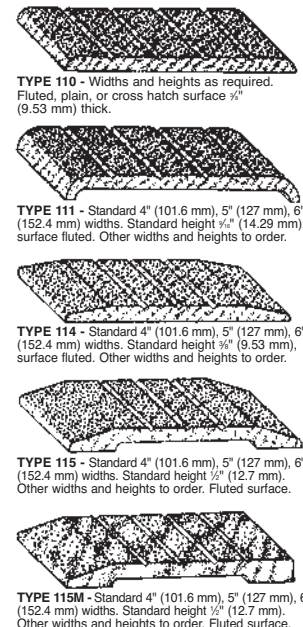
- Platforms manufactured in sections. Contact Wooster Products Inc for further information.
- Toeplates are added as required.
- Matching nosings are used on treads and platforms.
- Truss ribs are added when required for structural strength.
- Ferrogrit treads and platforms are furnished painted black; other metals have shotblasted finish.
- Standard surface furnished is abrasive cross hatched. Plain and fluted surfaces are also available.
- Supporting structural steel and fasteners are "by others."
- Various tread styles are available for attaching to carrier angles, or bolting directly to stair stringers.
- Sections are not "to scale."
- Attachment hole spacing for treads and platforms is "as detailed" for each job.
- Structural treads are custom made per application.
- Lead times to be determined per application.
- Maximum structural tread length 5' 0"; Consult Factory

TYPE 105
Shown attached to carrier angles. Nose and toeplate have been drilled for closed riser plates. Types 103, 104, 105A, 105, 106A, 107A, and 117 can be drilled for attachment to carrier angles.

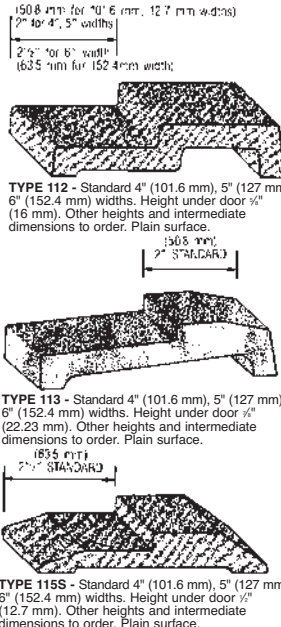
TYPE 117A
Shown with end lugs for mounting directly to stair stringer. No carrier angles are required. Types 105, 106, 107, and 117A can be used this way.



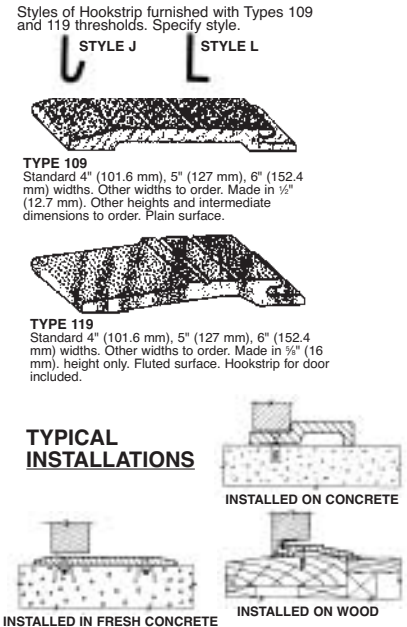
SADDLE TYPES*



STOP TYPES



HOOK STRIP TYPES



"Wooster" abrasive cast thresholds are cast to order from a large selection of architectural designs as shown. They are of highest quality and heavy duty construction in these metals:
ALUMOGRIT®: abrasive cast aluminum
FERROGRIT®: abrasive cast iron
FASTENERS: Thresholds are drilled and countersunk for 1/4" (6.35 mm) screws unless other fasteners are specified.
NOTCHING: Threshold ends can be factory notched for fast jobsite installation if frame details are furnished.
SPECIFICATIONS: See page 3 for casting specifications.
LENGTHS: Lengths to order up to 8' 6" (2.59 m) maximum in one piece.
SIZES: Standard sizes are shown below.
SPECIAL PROFILES: Special shapes up to 18" (457.2 mm) are available if details are provided.
***Meets A.D.A. Requirements**



Specify Spectra® For:

- Best Architectural Aesthetics
- Matching or Contrasting Color Decor
- Indoor or Outdoor Use
- Heavy Pedestrian Traffic Use



SPECTRA® NOSING TYPE WP3C

SPECTRA® TREADS PROVIDE...

A high content of aluminum oxide abrasive grit for long life and lasting beauty. Spectra's safety surface has easy maintenance features and insures greatest protection from liability of falls and injuries.

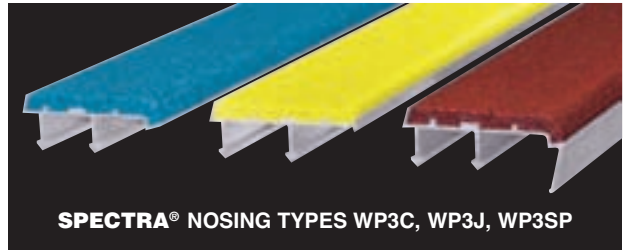
SPECTRA® FEATURES:

- Extruded aluminum base – abrasive filler
- Lengths to order, up to 10'0" (3.048 m) in one piece
- Lengths over maximum to be made in equal sections
- Anti-slip abrasive extending over radius of nose
- High content of aluminum oxide abrasive
- 18 standard colors
- "Clean" architectural lines
- Protective tape available at extra cost
- Non-combustible



SAFETY TREADS IN COLORS

Designed to enhance the safety and beauty of every architectural installation.



SPECTRA® NOSING TYPES WP3C, WP3J, WP3SP

SPECTRA® SPECIFICATION:

Provide Spectra® type _____ safety nosings as manufactured by Wooster Products Inc for interior and exterior stairs.

- Nosing base to be type 6063-T5 extruded aluminum.
- Anti-slip filler shall contain approximately 60% virgin grain Aluminum Oxide (AL₂O₃) abrasive.
- Binder is to be a fully-cured resilient type epoxy; epoxy binder to filler ratio to be 13% minimum for improved cleanability.
- Epoxy/Abrasive filler shall extend over the curved front edge of nosing and shall be securely bonded to the extruded aluminum base.
- Type of anchor shall be as specified. See page 11 for anchor details.
- Nosings shall terminate not more than 4" (101.6 mm) from ends of steps for poured concrete stairs; for concrete-filled steel pan stairs, nosings shall be full length of steps less 1/8" (3.05 mm) clearance.
- Color shall extend uniformly throughout the filler; black color will be furnished if no other color is specified.
- Protective tape available upon request at additional cost.
- Protective tape removed as soon as possible once installed.

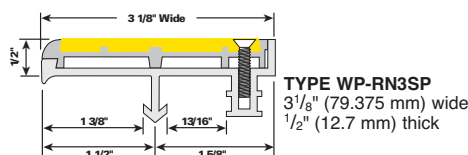
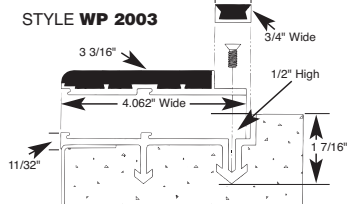
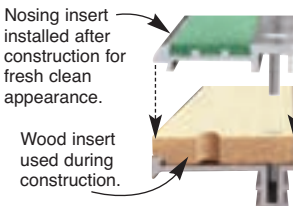
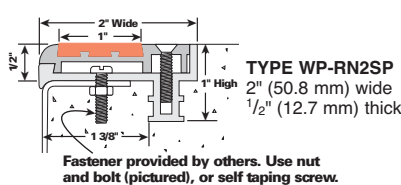
Note: Safety nosings going into new poured concrete or cement fill shall be installed before "INITIAL SET" of the concrete or cement occurs (see page 3).

Nosings shall finish flush with the top of the traffic surface.

SPECTRA® 2-STAGE STAIR NOSINGS

- Premium quality construction with no clatter and no visible fasteners for an architecturally clean design.
- Designed for installation on steel pan stairs or poured concrete steps.
- Nosings can be furnished with disposable insert for use during construction phase. After construction nosing inserts are installed for fresh, clean appearance.
- Furnished with Spectra Filler in a wide range of colors.
- Nosings can be replaced if damaged, without costly demolition of stairs.
- Future renovation projects made easier and less expensive.
- Maximum length 8 feet.

- Fast easy replacement
- Visual appearance and durability
- Secure anchorage
- Indoor or outdoor use
- Matching or contrasting color decor
- Non-combustibility
- Heavy pedestrian traffic use





Specify SpectrFor:

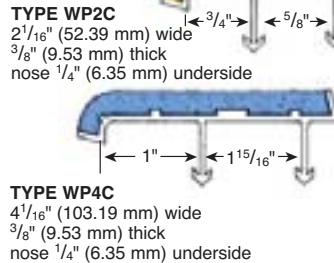
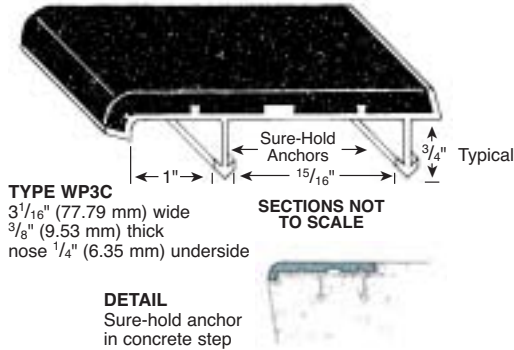
- Best Architectural Aesthetics
- Matching or Contrasting Color Decor
- Indoor or Outdoor Use

- Heavy Pedestrian Traffic Use
- Non-combustible

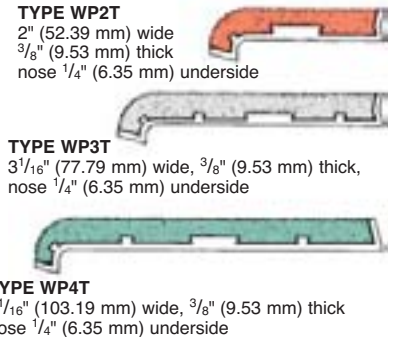
★ When specifying nosings put a note in Division 3 to alert concrete contractors. ★

SPECTRA® PROFILES FOR NEW CONCRETE STAIRS

Generally installed full step length less approx. 3" clearance each end. Custom lengths to ± 1/16".

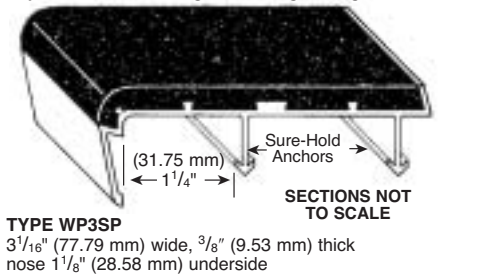


THESE SECTIONS AVAILABLE WITH COUNTERSUNK HOLES OR TIME-SAVER ANCHORS

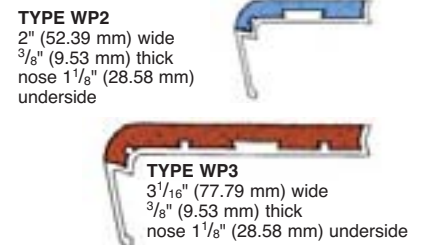


SPECTRA® PROFILES FOR STEEL PAN CONCRETE-FILLED STAIRS

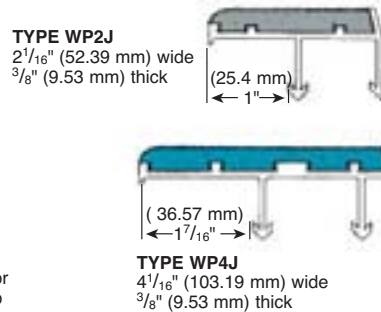
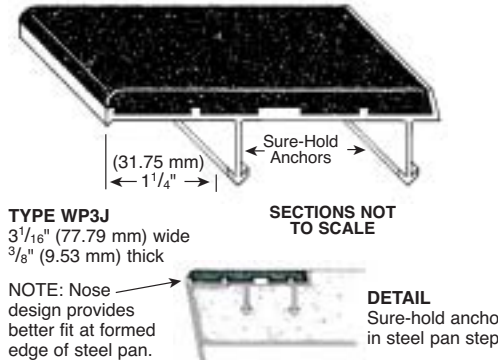
Generally installed full stringer to stringer length, less 1/8" clearance.



THESE SECTIONS AVAILABLE WITH COUNTERSUNK HOLES OR TIME-SAVER ANCHORS



SPECTRA® PROFILES FOR SLOPED RISER STEEL PAN STAIRS...meets OSHA barrier-free design



THESE SECTIONS AVAILABLE WITH COUNTERSUNK HOLES OR TIME-SAVER ANCHORS

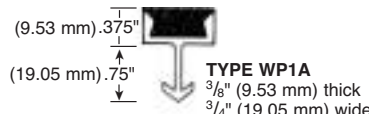


This series is designed to meet the OSHA requirements of the barrier-free code for stair construction.

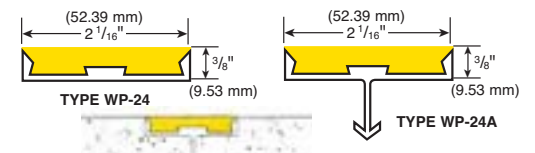
SPECTRA® RECESSED INTO STEP SURFACE



SPECTRA® FOR NEW CONCRETE



CALIFORNIA TITLE 24 NOSINGS



SPECTRA® COLORS

Standard color is black. Black will be shipped unless another color is specified. See color chart below for other colors available. Actual tread color may vary slightly from printed sheet. Request actual tread color sample if color is critical.

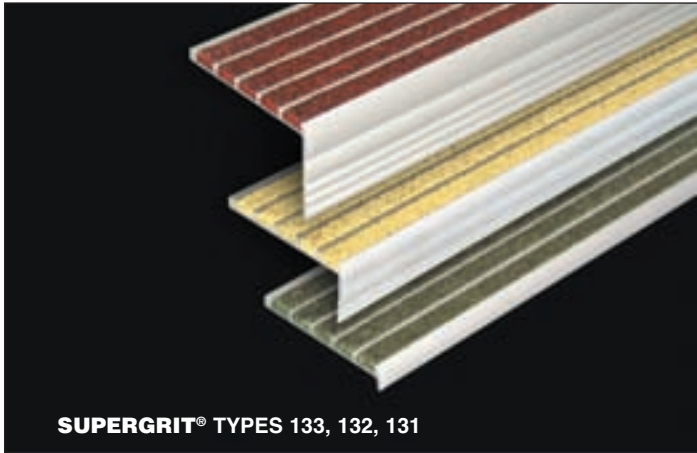




SUPERGRIT® Safety Treads

Specify Supergrit For:

- Heavy Pedestrian Traffic Use
- Indoor, Outdoor Installation
- Excellent Safety Protection at Low Cost
- New Construction or Renovation
- Non-combustibility



SUPERGRIT® TYPES 133, 132, 131

SUPERGRIT® Treads Provide...

A heat-treated, corrosion resistant, extruded aluminum base with satin/lacquered finish. The use of diamond-hard aluminum oxide in the filler assures long tread life under heavy pedestrian traffic use. Supergrit® is designed for both inside and outside use.

SUPERGRIT® Features:

- Extruded aluminum base – abrasive filler
- Lengths to order, up to 12'0" (3.66 m) in one piece
- Lengths over maximum to be made in equal sections
- Non-combustible
- High content of aluminum oxide abrasive
- 11 standard colors
- Colors extend throughout filler
- Protective tape available at extra cost



SUPERGRIT® TYPE 131

SAFETY TREADS IN COLORS

Time-proven Supergrit® safety treads are now available in colors for improved aesthetics.

SUPERGRIT®/STAIRMASTER® COLORS

Standard color is black. Black will be shipped unless another color is specified. See color chart below for other colors available.



Actual tread color may vary slightly from printed sheet. Request actual tread color sample if color is critical.

SUPERGRIT® SPECIFICATION:

Provide Supergrit® type _____ safety nosings as manufactured by Wooster Products Inc for interior and exterior stairs.

- Nosing base to be type 6063-T5 extruded aluminum.
- Anti-slip filler shall contain approximately 65% virgin grain Aluminum Oxide (AL₂O₃) abrasive.
- Nosings shall be non-combustible as tested under Federal Test Method Standard No. 501a, Method 6411.
- Type of anchor shall be as specified. See page 11 for anchor details.
- Nosings shall terminate not more than 4" (101.6 mm) from ends of steps for poured concrete stairs; for concrete-filled steel pan stairs, nosings shall be full length of steps less 1/8" (3.05 mm) clearance.
- Color shall extend uniformly throughout the filler; black color will be furnished if no other color is specified.
- Protective tape available upon request, at an extra cost.
- Protective tape should be removed as soon as possible once installed.

Note: Safety nosings going into new poured concrete or cement fill shall be installed before "INITIAL SET" of the concrete or cement occurs (see page 3).

Nosings shall finish flush with the top of the traffic surface.

- Heavy Pedestrian Traffic Use
- Indoor, Outdoor Installation
- Excellent Safety Protection at Low Cost
- New Construction or Renovation
- Non-combustibility

★ When specifying nosings put a note in Division 3 to alert concrete contractors. ★

SUPERGRIT® PROFILES FOR NEW CONCRETE AND STEEL PAN STAIRS

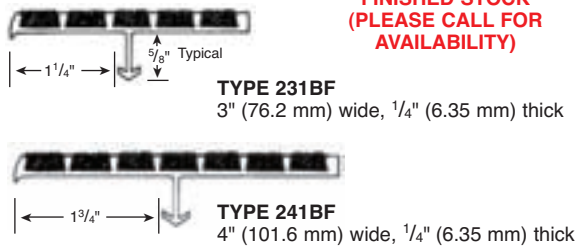
THE DUAL PURPOSE STAIR NOSING BY 'WOOSTER'

POURED CONCRETE:

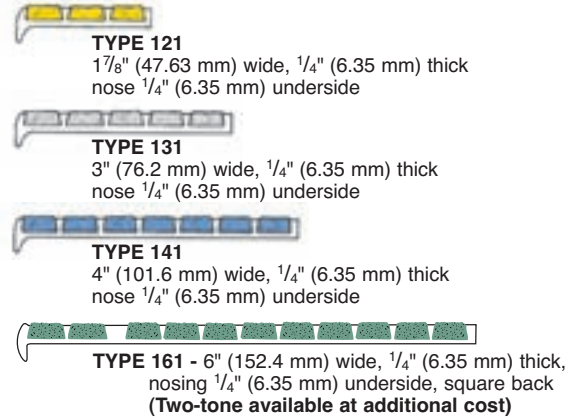
Installed full step length less approximate 3" clearance.

STEEL PAN:

Concrete filled, installed stringer to stringer less 1/8" clearance.



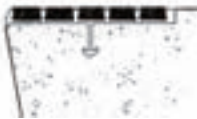
THESE SECTIONS AVAILABLE WITH COUNTERSUNK HOLES OR TIME-SAVER ANCHORS



DETAIL

Sure-hold anchor in concrete step.

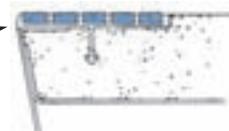
Designed to install so that there is no projection past the face of the riser.



DETAIL

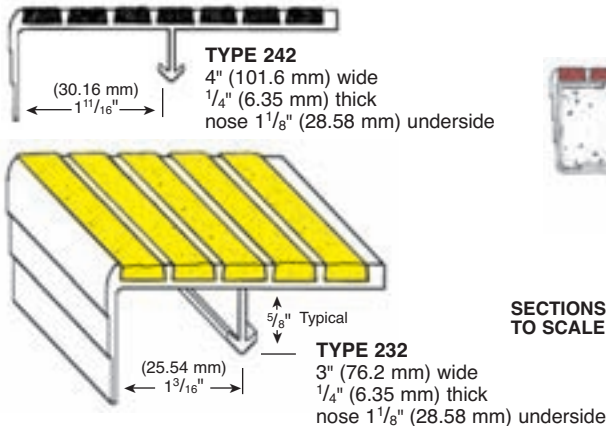
Sure-hold anchor in sloped riser steel pan step.

NOTE: Nose design provides better fit at formed edge of steel pan.

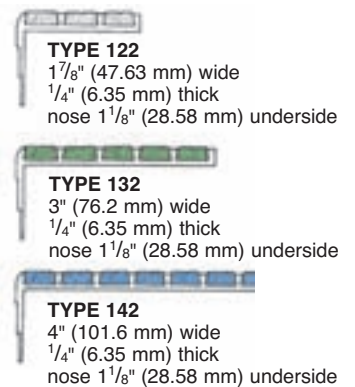


SUPERGRIT® PROFILES FOR STEEL PAN CONCRETE-FILLED STAIRS

Full stringer length, less 1/8" clearance.

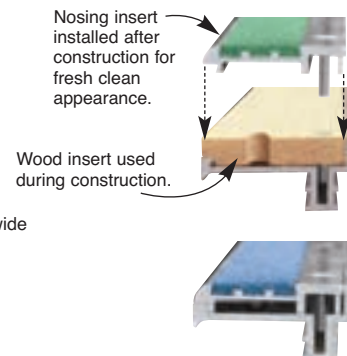
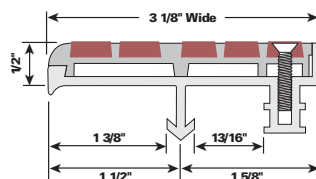
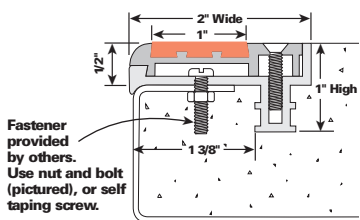


THESE SECTIONS AVAILABLE WITH COUNTERSUNK HOLES OR TIME-SAVER ANCHORS



SUPERGRIT® PROFILES FOR 2-STAGE STAIR NOSINGS

- Fast easy replacement
- Visual appearance and durability
- Secure anchorage
- Indoor or outdoor use
- Matching or contrasting color decor
- Non-combustibility
- Heavy pedestrian traffic use

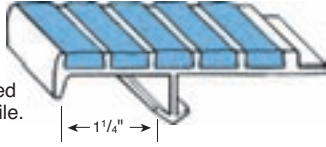


FOR POURED CONCRETE OR STEEL PAN STAIRS

HAS RECESS FOR TILE

TYPE 431

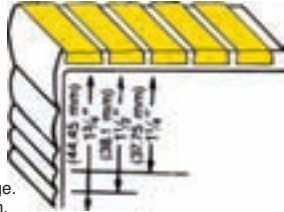
3 1/2" wide (88.9 mm),
1/4" (6.35 mm) thick,
1/4" (6.35 mm) nose underside
Specially designed with recessed
back to receive 1/8" (3.05 mm) tile.



HAS VARIABLE NOSE DEPTH

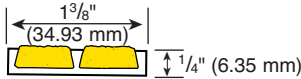
TYPE 133 *

3" (76.2 mm) wide
1/4" (6.35 mm) thick
1 3/4" (44.45 mm) nose underside



Nose can be sheared for additional charge.
*Note: Available only in standard mill finish.

TYPE 610

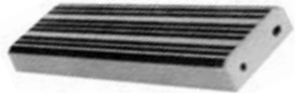


NAVSEA TREAD

Sizes 4" – 6" – 9" • Mil-T-24634 (SH)
Custom Lengths • Full Treads • Cap Treads

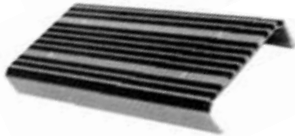
TYPE I FULL TREAD

- 4" - Model 841
- 6" - Model 861
- 9" - Model 891



TYPE II CAP TREAD

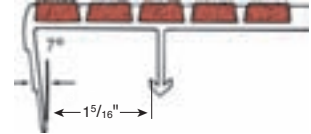
- 4" - Model 842
- 6" - Model 862
- 9" - Model 892



FOR SLOPED RISERS

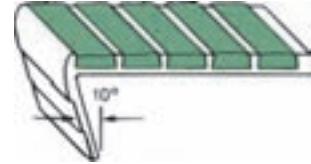
TYPE 238

3" (76.2 mm) wide
1/4" (6.35 mm) thick
1 1/8" (28.58 mm) nose underside



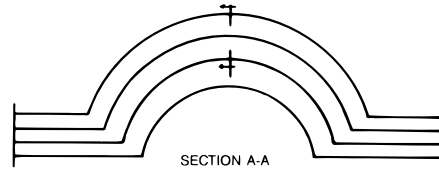
TYPE 138

3" (76.2 mm) wide
1/4" (6.35 mm) thick
1 1/8" (28.58 mm) nose underside
Specially designed for steel
pan stairs with sloped risers



SUPERGRIT® CURVED & MITERED TREADS

FOR MOST RADIUS APPLICATIONS – CONSULT FACTORY

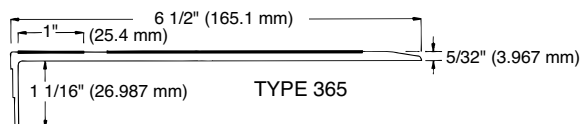
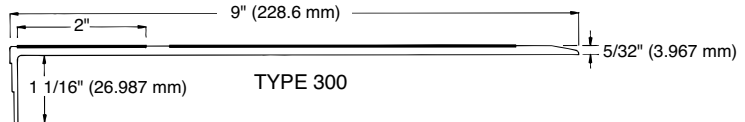
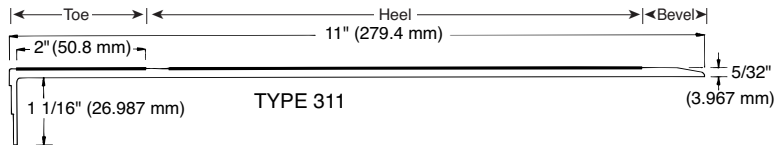
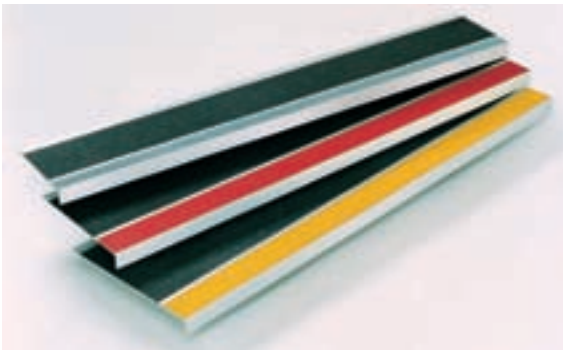


Type 121 and 231BF shown on page 9 are designed especially for use on platforms in choir and band rooms. Other sections can also be curved. The tread provides non-slip protection as well as protection for the edge of the stair, preventing chipping and wear. All curving and mitering is done in the factory. Treads are shipped ready for installation.

- Lengths as required to 10'0" (3.048 m)
- Curves and miters to drawings or template
- Minimum radius 3'0" (914.4 mm)
- Guaranteed uniformity of width and thickness insures easy backing with floor tile
- Straight nose for easy installation in concrete form
- Lead times increase for curved treads
- Only the following Supergrit treads are curved; types 121, 131, 141, 231BF, 241BF, 630, 610

- Inexpensive
- Easily replaceable
- Color coordinated surfaces available
- Title 24 applicable

- A.D.A. approved
- Durable safety surface
- Niteglow™ available
- Indoor/outdoor use



FLEXMASTER® Quality Features

- Longwearing, heat treated, extruded aluminum base.
- Available in many contrasting colors. (Refer to Flex-Tred® on page 14.)
- Tread surface covered with Wooster Products' reliable Flex-Tred® safety surface.
- Easily installed to give quick anti-slip protection.
- **3-year warranty on material and workmanship.**
- **Available Colors:** Sparkle Black, Flat Black Fine, Flat Black Medium, Ultragrip Black, Pebble White, Industrial Red, Industrial Brown, Ocean Gray, Safety Yellow, Teak Brown, Scarlet Red, Caribbean Blue, Horizon Blue, Saturn Yellow, and NITEGLOW®.
- **Treads are furnished drilled and countersunk unless otherwise specified.**
- Construction adhesive recommended for installation.
- **Maximum length = 12' 0"**



STAIRMASTER® Safety Renovation Treads

Specify Supergrit® For:

- Heavy Pedestrian Traffic Use
- Indoor, Outdoor Installation
- Excellent Safety Protection at Low Cost
- Renovation
- Non-combustibility

05 55 00/WON

BuyLine 0228

SPECIFY

“STAIRMASTER®” FOR RENOVATION OF WORN AND SLIPPERY STAIRS



Stairmaster® Safety Renovation Treads are designed for the modernization and restoration of all types of stairs, while also providing excellent anti-slip protection for pedestrians.

All types are 9/32" (7.14 mm) thick.

Two-tone treads with contrasting color available. Call for details.

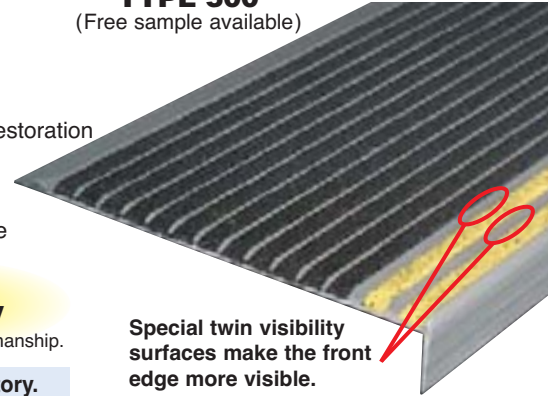
Stairmaster® Renovation Safety Treads provide a fast and economical alternative to removal and reconstruction of a stairway.

Wooster Products Leveling Compound is available to fill/level worn steps before installing Stairmaster® treads.

Use construction adhesive in addition to mechanical fasteners for the best installation results.

- Special tread sealer available for wood or saltwater applications - consult factory.

TYPE 500 (Free sample available)



Special twin visibility surfaces make the front edge more visible.

5-Year Warranty

on material and workmanship.

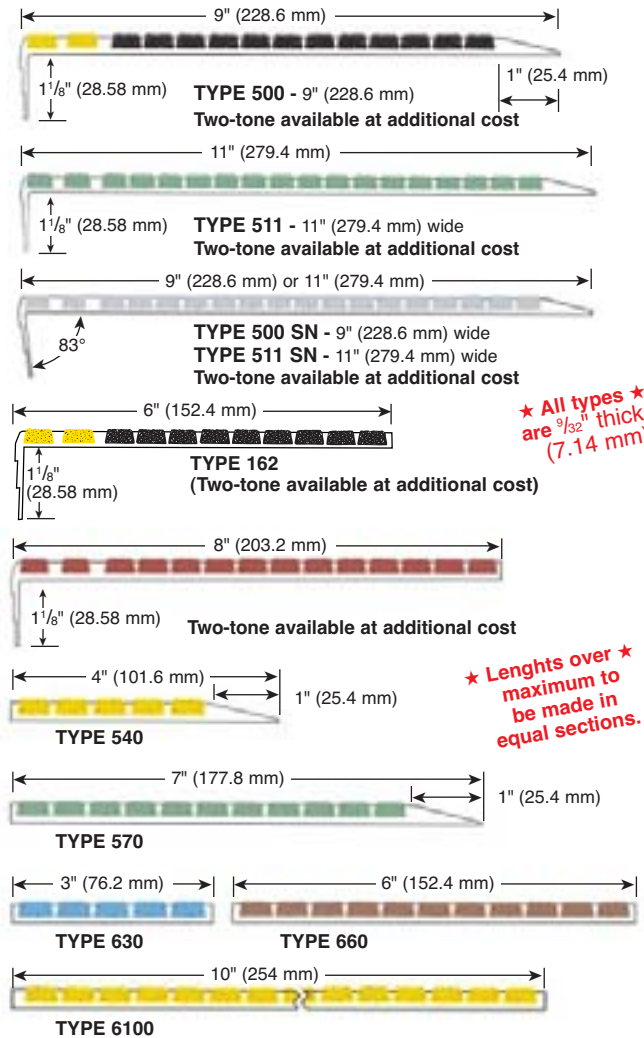


STAIRMASTER® ON WOOD STAIR



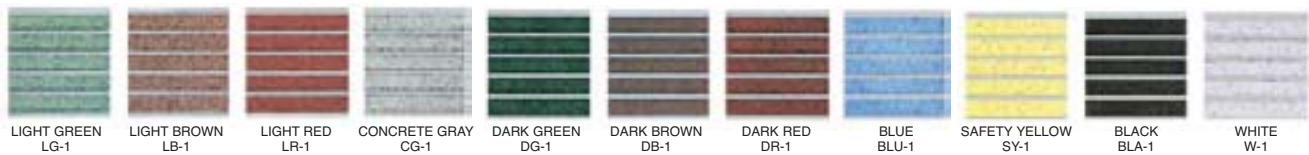
STAIRMASTER® ON CONCRETE STAIR

Most styles available up to 12'0" in one section. Maximum on type 511SN and 511 is 8'0" and maximum on type 6100 is 10'0". Drilled and countersunk holes are standard unless otherwise specified. Stairmaster treads furnished with beveled ends standard.



STAIRMASTER® COLORS

Standard color is black. Black will be shipped unless another color is specified. See color chart below for other colors available.

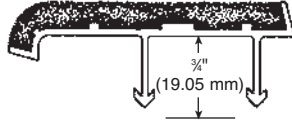


Actual tread color may vary slightly from printed sheet. Request actual tread color sample if color is critical.

FRESH CONCRETE

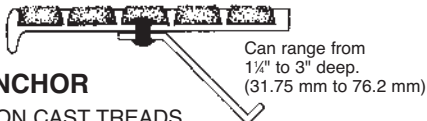
SURE-HOLD ANCHOR

Sure-Hold anchors run full length of tread for positive anchorage and quick installation. Since Sure-Hold anchors are concealed, no bolt holes appear on the tread surface. Available only on types WP-2C, WP-3C, WP-4C, WP-2J, WP-3J, WP-4J, WP-3SP, 231-BF, 241-BF, 232, 242, 238, 431.



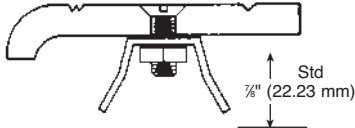
TIME-SAVER ANCHOR

NOT AVAILABLE ON CAST TREADS.
NOT AVAILABLE ON TREADS OVER 4" (101.6 mm) WIDE.
Time-Saver anchors provide concealed anchorage. Anchors are bent to desired depth (usually 45°) before treads are installed. Standard spacing is 3" (76.2 mm) from ends on approx. 12" (304.8 mm) centers, in single, staggered, or double row, according to tread width. Time-Saver anchors are available on types WP-2T, WP-3T, WP-4T, WP-2, WP-3, WP-2JT, WP-3JT, 121, 131, 141, 122, 132, 133, 610, 630.



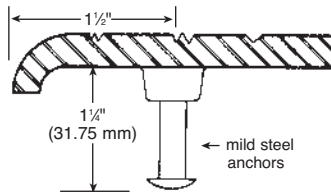
WING TYPE ANCHOR

Steel wing anchors, bolts, and nuts are furnished for field attachment into factory-drilled and ctsk. holes, prior to tread installation. Standard spacing is 3" (76.2 mm) from ends on approx. 12" (304.8 mm) centers. In single, staggered or double row, according to tread width. Can be furnished on most types if specified. 3/4" length - FHMS. Wing metal, standard mild steel. Stainless steel upon request.



CONCEALED INTEGRAL ANCHOR

This concealed type steel anchor is furnished standard on cast types 150 and 250. Anchor spacing on approx. 10" (254 mm) centers. Can be furnished on types 101, 101-SP, 116, 102, 103, 104, 105A, 100 but MUST BE SPECIFIED.



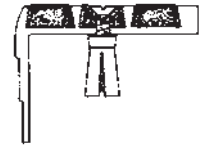
EXISTING CONSTRUCTION



WOOD OR MACHINE SCREWS



SILVER TAPCON SCREWS

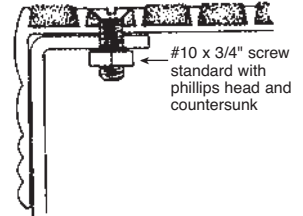


SCREW & SHIELDS

Treads being superimposed on existing stairs can be furnished pre-drilled and ctsk. for wood, machine or Tapcon screws. Standard spacing is 3" (76.2 mm) in from each end, approx. 12" (304.8 mm) centers, in single, staggered, or double row, according to tread width. Will furnish #10 screws.

BOLTED TO STEEL PAN RETURN

Additional anchorage can be provided on some types of treads being used on new steel pan stairs. Pan return must be 1" (25.4 mm) minimum. Standard hole spacing is 3" (76.2 mm) from ends on approx. 12" (304.8 mm) centers. Specify how much of a return is on the pan for drilling purposes. Can be furnished on types WP-2, WP-3, 122, 132, 138, 142, 133, 162, 101-SP, 102, 103, but MUST BE SPECIFIED.



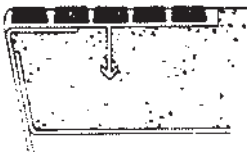
ALSO AVAILABLE: PROTECTIVE TAPE

Nosings for NEW construction can be furnished with a protective tape cover. This tape should be removed after the stairs are installed. Keeps treads free of dirt during construction. Tape coverings, of course, entail a small additional charge per lineal foot. Tape should not be left on treads over 45 days.

MUST BE SPECIFIED; Consult Factory

INSTALLATION DETAILS

TYPICAL INSTALLATION DETAILS FOR WOOSTER SAFETY TREADS



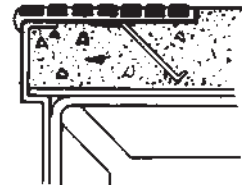
TYPE 231 BF Sure-Hold anchor in sloped riser steel pan step.



Type 500 Stairmaster® superimposed on wood step. If steps are other than wood, use screws with expansion shields and an application of adhesive.



Type WP3C with integral Sure-Hold anchor in new concrete stair.



Type 141 Supergrit® with Time-Saver strap anchors in cement filled steel pan.



Type 101 with wing type anchors in poured concrete stair.



Type 131 with Time-Saver strap anchors in new concrete stair.



Type 101SP with concealed integral anchor in steel pan stair.



Type 142 Supergrit® attached to wood tread and backed with tile, carpet, or other material.

ANTI-SLIP PROTECTION FOR RAMPS, WALKWAYS, DECKS

SAFE-STRIDE® ACRYLIC or OIL BASE

ANTI-SLIP SAFETY COATING
 INDOOR OR OUTDOOR USE

Minimum 100 gallon order
 required for special colors.

Safe-Stride® is a specially formulated anti-slip safety paint, which contains grit to help provide a tough, sure-footed, safe traction surface. The formula is water based acrylic so there are no shipping restrictions, such as those associated with shipping hazardous materials.

Safe-Stride® coatings have been formulated for use on concrete, wood and primed metal surfaces. When used properly, Safe-Stride® products provide a tough, abrasive, anti-slip coating for walkways, steps, ramps, boat decks, locker room floors, and a variety of other uses.

Safe-Stride® is shipped ready to use. One gallon covers approximately 100 sq. ft. in one coat. It can be applied by roller, brush or trowel. Easy application by your own maintenance crew. Easy clean-up with soap and water. Safe-Stride® is shipped from stock in our standard colors: gray, black and safety yellow. Other colors available on special orders (Consult Factory).

*Available in oil-base as gray only.



WALK-A-SURED EPOXY

ANTI-SLIP SAFETY COATING FOR INDOOR OR OUTDOOR USE

Walk-A-Sured CLEAR Unique two-part clear anti-slip epoxy system which offers excellent slip resistance. Simply mix and use paint roller to apply epoxy. One gallon covers approximately 150-200 square feet. Product can be applied to wood, aluminum, concrete, metal, etc. Excellent abrasion resistance, chemical, solvent and water resistant. Great for any application where a clear anti-slip coating is needed, for example around pools, decks, steps, ramps, kitchens, amusement parks, etc.



Walk-A-Sured ROLL-ON Easy to use newly developed two-part anti-slip epoxy system for moderate use. Simply mix and use 1/4" nap epoxy paint roller to apply. One gallon covers approximately 150-200 square feet. Recommended for indoor or outdoor use. Product can be applied to wood, aluminum, concrete, metal, etc. Great for any foot traffic applications such as ramps, docks, stairs, amusement parks and around slippery wet areas. Chemical, solvent and water resistant.

Colors Available: Black, Gray



Walk-A-Sured TROWEL-ON Newly developed two-part anti-slip epoxy system for heavy duty use. A stiff product that must be applied with a trowel and squeegee, which comes in the kit. One gallon covers approximately 75-100 square feet. Product can be applied to wood, metal, concrete or almost any other clean dry surface. Great for industrial and other applications where a heavy anti-slip epoxy coating is needed. Chemical, solvent and water resistant.

Colors Available: Black, Gray



EPOXY WP-70

ABRASIVE ANTI-SLIP SAFETY COATING
 INDOOR OR OUTDOOR USE

A 2-part system, squeegees on 1/16" thick. Cures in 8 to 10 hours to an extremely hard surface that will not crack or separate under flexing, heavy impact or thermal shock. Diamond hard aluminum oxide grit provides permanent anti-slip protection and wear resistance. Resists weather, chemicals, gasoline, oil and grease. Coverage: approximately 30 square feet per gallon. Ideal for ramps with lift truck traffic.

Colors Available: Black, Gray, Brown, Safety Yellow.

Not to be used as a repair kit for
 Spectra® or Supergrit®.

AVAILABLE FROM STOCK



INTERNATIONAL SHIPMENTS
 Consult Factory





FLEX-TRED®

Anti-Slip Safety Rolls, Cleats & Strips for Indoor or Outdoor Use

FLEX-TRED®

Flex-Tred® heavy-duty safety surface is quick to install and provides durable pedestrian safety on slippery surfaces. Uses: ramps, light traffic stairs, exercise equipment, industrial equipment, aisles, entrances, skateboards.

Flat black medium is a standard color and will be furnished unless another color is specified.

Blacks Textures: Sparkle Black, Flat Black Fine, Flat Black Medium, Ultragrip Black, Flat Black Coarse.

Also Available: Phosphorescent: NITEGLOW®

FloorPrep – Consult Factory

General Note: Standard tolerance $\pm 1/16"$

STANDARD ROLL SIZES

3/4" x 60 ft. - packed	16 rolls per carton
1" x 60 ft. - packed	12 rolls per carton
2" x 60 ft. - packed	6 rolls per carton
3" x 60 ft. - packed	4 rolls per carton
4" x 60 ft. - packed	3 rolls per carton
6" x 60 ft. - packed	2 rolls per carton
8" x 60 ft. - packed	3 rolls per carton
12" x 60 ft. - packed	1 roll per carton
18" x 60 ft. - packed	1 roll per carton
24" x 60 ft. - packed	1 roll per carton

STANDARD DIE-CUT SIZES

All standard sizes are packed 50 pieces each carton.

STRIPS AND CLEATS STANDARD CUT SIZES:



6" x 24"

3" x 24"

3" x 36"

2" x 24"

1" x 24"

3/4" x 24"



5 1/2" x 5 1/2"



5 1/2" Dia.

Custom sizes for rolls and die cuts available by request.

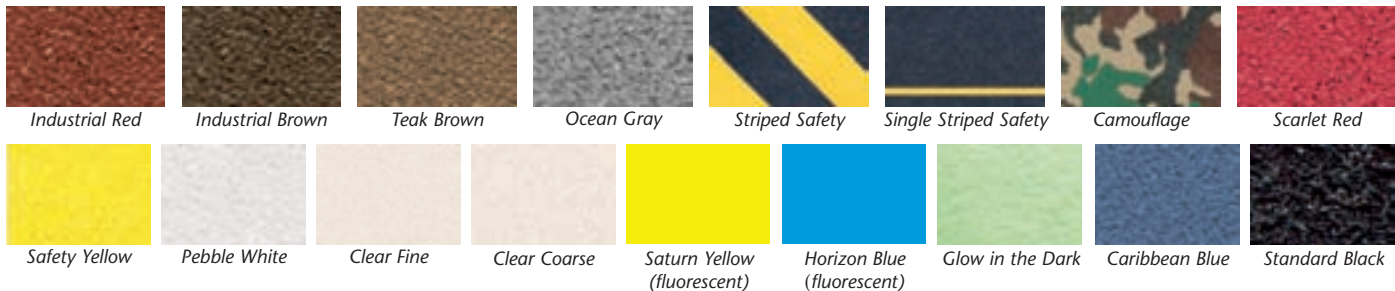


Custom Sizes On Request • Standard tolerance $\pm 1/16"$

Marine colors (for barefoot use) also available.

FLEX-TRED COLOR CHART

Color coordinate with Flex-Tred – key to decor – show contrast. Our variety of colors gives you a variety of options. Grades of coarseness, shades of black and fluorescent colors are available upon request.



*Actual color may vary slightly from printed sheet. Request actual color sample if color is critical. Black is standard and will be furnished unless a color is specified.

OUR 88th YEAR

119680

WOOSTER PRODUCTS INC

1000 Spruce Street • P.O. Box 6005 • Wooster, Ohio 44691

Phone: (330) 264-2844 • Fax: (330) 262-4151

Toll Free Phone: 1-800-321-4936

© Copyright 2009 WOOSTER PRODUCTS INC

Application Consulting:
refer to website for local support

Web Site: www.wooster-products.com

E-Mail: Sales@wooster-products.com

See Sweets Catalog, Blue Book and Thomas Register

Wooster Products Inc reserves the right, without notice, to make changes in specifications, construction or design of any products at any time in such manner as we may consider necessary, or advisable, and to discontinue the manufacture and sale of any products.

IMPORTANT NOTICE TO PURCHASER: THE FOLLOWING IS MADE IN LIEU OF ALL WARRANTIES, EXPRESSED OR IMPLIED, INCLUDING WARRANTIES OF MERCHANTABILITY AND FITNESS FOR A PARTICULAR PURPOSE: Purchase or use of this product constitutes an agreement with Seller and Manufacturer that, if the product proves to be defective or in any way unsuitable, Seller's and Manufacturer's limit of liability for all damages, including but not limited to incidental or consequential damages, and User's or Purchaser's exclusive remedy, regardless of legal theory, including theories of breach of warranty, negligence and strict liability, shall be to receive, at Seller's or Manufacturer's option, repair of the defective product, an equivalent quantity of replacement product or a refund of the purchase price.

Printed in U.S.A.