

2009

Concrete Restoration Systems

- Self-Leveling Underlayments
- Self-Leveling Toppings
- Primers for Self-Leveling
- Patching and Skimcoating Compounds
- Screeds
- Concrete Repair Mortars
- Construction Grouts
- Exterior Refinishing
- Waterproofing
- Repair Epoxies
- Curing Compounds and Admixtures
- Corrosion Protection
- Sealer



www.mapei.com
MAPEI[®]
TECHNOLOGY YOU CAN BUILD ON™

Concrete Restoration Systems **Introduction**

MAPEI has the resources to provide architects, builders and contractors "Total Solutions" for all concrete restoration and flooring projects. A total solution provides a single-source system – from surface preparation and concrete restoration through the installation of floor coverings. MAPEI systems are also guaranteed and compatible with approved specified flooring manufacturers.

The total solutions for Concrete Restoration Systems include:

- Primers and epoxies.
- Self-leveling underlayments and toppings.
- Decorative flooring systems.
- One- and two-component concrete repair mortars.
- Construction grouts.
- Waterproofing products.
- Tool systems and accessories for surface preparation.
- Technical services and customer support.

MAPEI is a unique company. It has transformed from an enterprise of the Italian craft tradition in Milan, Italy, into a global scientific and technological leader in its industry. Today, around the world, MAPEI is working hard to make the best and most useful products for you!



MAPEI remains a leader in concrete restoration systems through its ongoing commitment to the following principles:

Keeping scientific research at the forefront

Worldwide, 12% of MAPEI employees work in research & development, making technologically superior products and quality service available to customers.

To stay on the cutting edge of innovation and one step ahead of the competition, MAPEI reinvests 5% of its annual sales revenue into research & development of new products. MAPEI's worldwide labs work on more than 150 new projects each year.



Finding solutions to our customers' challenges

MAPEI's technical experts are highly equipped to propose solutions to any jobsite problem, working with R&D to custom-design products and systems to meet the most challenging construction needs.

MAPEI's Technical Services team is committed to helping resolve technical problems. It provides prompt telephone response to customers seeking urgent technical advice including: planning project installations, troubleshooting problems, reviewing product claims and conducting specialized product testing as needed.



Providing education as a key to success

MAPEI strongly believes in supporting the training of architects, engineers, distributors and installers. The MAPEI Technical Institute – located in facilities in Florida, Texas and California as well as in Laval, Canada – conducts two- and three-day training courses in custom-designed, high-tech facilities. These courses offer practical demonstrations, hands-on workshops, video presentations and seminars.

Developing environmentally friendly products

At MAPEI, concern for the environmental impact of products is a fundamental part of its philosophy, corporate commitment and responsibility. MAPEI utilizes recycled materials whenever it is practical. For example, more than 20% of *Ultralite Mortar*™ (MAPEI's state-of-the-art lightweight mortar) comes from recycled raw materials. Since 2001, MAPEI has been a member of the U.S. Green Building Council, which focuses on sustainable and recyclable building processes as well as environmental and internal air-quality issues.

MAPEI technology logos

Products developed with MAPEI's "green innovation" are LEED-compliant, helping to contribute valuable points toward LEED-certified projects.



Select MAPEI products for tile and stone installation feature High-Hydrated Cement Technology, offering high early strength, excellent workability, ultra fast curing, unmatched long-term durability and efflorescence-free curing.



Corrosion Inhibitor Enhanced repair mortars feature proprietary additives that fortify the passivation layer on embedded reinforcing steel, enhancing its resistance to corrosion.



Following the strictest international standards for quality

MAPEI is devoted to ensuring continuous improvement in quality products and services as it works toward achieving the most comprehensive and demanding International Organization for Standardization (ISO) certification for all of its American facilities.

Concrete Restoration Systems **Quick-Reference Chart**

Product	Description	Applications	Recommended Substrates								Interior	Exterior
			Concrete	Wood	Ceramic	VCT	Terrazzo	Steel	Gravel	Mud Bed		
Primers for Self-Leveling (p. 9)												
<i>Planibond® EBA</i>	Epoxy Bonding Agent and Primer	Superior performance on a variety of prepared substrates	◆		◆	◆		◆		◆	◆	◆
<i>Primer L™</i>	Advanced-Technology Acrylic Latex Primer for Concrete	For porous and prepared concrete substrates	◆							◆	◆	◆
<i>Primer WE™</i>	Water-Based Epoxy Primer	For nonporous and prepared substrates; use only <i>Primer WE</i> over <i>Planiseal MRB</i>		◆	◆	◆	◆			◆	◆	◆
Self-Leveling Underlayments and Toppings (pp. 6 – 8)												
<i>Novoplan® 2</i>	Polymer-Modified, Cement-Based, Self-Leveling Underlayment	3-day cure underlayment/cost, polymer-modified	◆	◆	◆	◆	◆	◆		◆	◆	◆
<i>Novoplan Easy</i>	Easy-Preparation, Self-Leveling Underlayment	Leveling, smoothing & repairing of interior floors	◆	◆	◆	◆	◆	◆		◆	◆	◆
<i>Planitex™ SL</i>	Self-Leveling Underlayment for Gypsum and Wood Substrates	Patching and leveling interior wood and gypsum floors		◆							◆	◆
<i>Ultraplan® 1 Plus</i>	High-Performance, Quick-Setting, Self-Leveling Underlayment	Quick-cure underlayment ideal for low-build applications	◆	◆	◆	◆	◆	◆		◆	◆	◆
<i>Ultraplan Easy</i>	Easy-Preparation, Fast-Setting, Self-Leveling Underlayment	Reduced surface preparation	◆	◆	◆	◆	◆	◆		◆	◆	◆
<i>Ultraplan M20 Plus</i>	Quick-Setting, Self-Leveling Concrete Topping and Underlayment	High-quality, general-purpose underlayment and topping with superior open time and flow	◆	◆	◆	◆	◆	◆		◆	◆	◆
<i>Ultratop®</i>	High-Performance, Quick-Setting, Self-Leveling Concrete Topping	High-quality topping for finished flooring systems	◆	◆	◆	◆	◆	◆		◆	◆	◆
Patching and Skimcoating Compounds (p. 10)												
<i>Mapecem® Quickpatch</i>	Interior/Exterior, Fast-Setting, High-Flow Concrete Patch	Interior/exterior horizontal spalled substrates or localized surface damage up to 3" (7,5 cm) deep	◆							◆	◆	◆
<i>Tilt Finish™</i>	Fast-Setting, Concrete Smoothing and Finishing Compound	Refinishing & patching of concrete surfaces; smoothing/finishing compound for tilt wall	◆								◆	◆
Screeds (pp. 10 – 12)												
<i>Mapecem 100 & Planicrete® PM</i>	High-Build, Two-Component, Fast-Setting Mortar System	Rapid cure, low cost, high flow, ease of placement, pumpable	◆	◆	◆		◆	◆	◆	◆	◆	◆
<i>Mapecem 101</i>	Thin-Build, One-Component, Fast-Setting Mortar	Durable wear surface for low-build resurfacing repairs	◆				◆	◆		◆	◆	◆
<i>Mapecem 102</i>	Medium-Build, One-Component, Fast-Setting Mortar	Durable wear surface for high-build applications	◆	◆			◆	◆	◆	◆	◆	◆
<i>Mapecem 202</i>	Medium-Build, Two-Component, Fast-Setting Mortar	Superior-durability wear surface for high-build applications	◆	◆			◆	◆	◆	◆	◆	◆
<i>Topcem Premix</i>	Ready-to-Use Accelerated-Cure Screed	Suitable in both bonded and unbonded, interior and exterior applications	◆	◆	◆		◆	◆	◆	◆	◆	◆
Concrete Repair Mortars (pp. 12 – 15)												
<i>Planitop® X</i>	Fast-Setting Horizontal, Vertical and Overhead One-Component Repair Mortar	Fast, versatile, user-friendly, economical, trowel-applied mortar with high early strength	◆								◆	◆
<i>Planitop XS</i>	Extended-Working-Time, Vertical and Overhead One-Part Repair Mortar	Extended working time; variant of <i>Planitop X</i>	◆								◆	◆
<i>Planitop 12</i>	Vertical and Overhead One-Component Repair Mortar	Thixotropic with extended open time and superior shotcrete performance	◆								◆	◆
<i>Planitop 15</i>	Form-and-Pour, One-Component Repair Mortar	High-flow form-and-pour applications; column repairs	◆								◆	◆
<i>Planitop 18</i>	Fast-Setting, Flowable, One-Component Repair Mortar	Heavy-traffic, rapid road-surface repair; fast-setting general repair	◆						◆		◆	◆
<i>Planitop 21</i>	Thin-Build, Two-Component Rendering Mortar	Strong and durable low-build resurfacing mortar	◆			◆	◆		◆		◆	◆
<i>Planitop 23</i>	Vertical and Overhead Two-Component Repair Mortar	Renovation and repair of vertical and overhead structures	◆								◆	◆
<i>Planitop 25</i>	Flowable Two-Component Repair Mortar	Near self-leveling exterior-grade resurfacing mortar; polishes beautifully	◆					◆	◆		◆	◆

* Aggregate is typically 3/8" (10 mm) pea gravel, saturated surface-dry (SSD). All measures (coverages, cure times, etc.) are estimations under ideal conditions. Actual installation conditions (surface and temperature) will impact coverages and cure times. Consult the Technical Data Sheet and MAPEI's Technical Services for more information.

Index to technology logos



Select MAPEI products for tile and stone installation feature High-Hydrated Cement Technology, offering high early strength, excellent workability, ultra fast curing, unmatched long-term durability and efflorescence-free curing.



Corrosion Inhibitor Enhanced repair mortars feature proprietary additives that fortify the passivation layer on embedded reinforcing steel, enhancing its resistance to corrosion.



Products developed with MAPEI's "green innovation" are LEED-compliant, helping to contribute valuable points toward LEED-certified projects.

Self-Leveling Underlayments



Planitex™ SL

Self-Leveling Underlayment for Gypsum and Wood Substrates

Planitex SL is a high-performance gypsum-based self-leveler. It is a low-VOC floor-smoothing compound for patching, skimming, smoothing and leveling in dry interior residential or commercial areas. *Planitex SL* is suitable under normal loading in interiors from featheredge to 1-1/4" (3,2 cm). *Planitex SL* provides a suitable substrate for carpet, rubber, vinyl and ceramic tile. *Planitex SL* can be used to cover radiant or in-floor heating systems, and features exceptional compressive and flexural strengths so that it can support light wheeled traffic.

Novoplan® 2

Polymer-Modified, Cement-Based, Self-Leveling Underlayment

Novoplan 2 is a high-strength, self-leveling, cement-based underlayment and repair mix for interior concrete and engineer-approved floors. *Novoplan 2* is suited for leveling, smoothing and repairing interior floors before installation of floor coverings. Ceramic tile and natural stone can be installed 24 hours after application. Floor coverings – such as carpet, vinyl sheet goods, vinyl tile, vinyl composition tile (VCT), homogenous PVC, rubber and engineered wood plank – can be installed 1 to 3 days after application, depending upon thickness of application.

	Product Code	Packaging
U.S./Canada	117450	Bag: 50 lbs. (22,7 kg)



	Product Code	Packaging
U.S.	17850000	Bag: 50 lbs. (22,7 kg)
Canada	1785000021	Bag: 50 lbs. (22,7 kg)



Novoplan® Easy

Easy-Preparation, Self-Leveling Underlayment

Novoplan Easy is a high-strength, self-leveling cement-based underlayment and repair mix for interior concrete and engineer-approved floors. It typically requires only a clean, soundly bonded substrate before application. *Novoplan Easy* provides low installation costs and fast turnaround on jobsites.

Ultraplan® 1 Plus

High-Performance, Quick-Setting, Self-Leveling Underlayment

Ultraplan 1 Plus is an HCT™ (High-Hydrated Cement Technology)-based, quick-setting, self-leveling, self-drying underlayment and repair mix for interior concrete and engineer-approved floors. *Ultraplan 1 Plus* has high strength and is abrasion-resistant, able to withstand light foot traffic after 2 to 3 hours and vehicular rubber-wheel traffic after 3 days.

Ultraplan® M20 Plus

Quick-Setting, Self-Leveling Concrete Topping and Underlayment

Ultraplan M20 Plus is an HCT™ (High-Hydrated Cement Technology)-based, quick-setting self-leveling, self-drying material. It is specially formulated for the resurfacing and construction of interior horizontal surfaces as a light-traffic industrial or commercial wear topping or underlayment for floor coverings. This light gray product can be used for fast-track resurfacing and construction of horizontal wear surfaces. It also is designed to accept architectural stains as well as industrial/commercial sealers and coatings.

Ultraplan M20 Plus is also tough enough for industrial warehouse floors and loading docks subject to continual light vehicular and foot traffic. Ceramic tile and natural stone can be installed in as little as 3 to 4 hours after application. Floor coverings – such as carpet, vinyl sheet goods, vinyl tile, vinyl composition tile (VCT), homogenous PVC, rubber, engineered wood plank, and polymer floor coatings and toppings – can be installed 16 to 24 hours after application.

	Product Code	Packaging
U.S./Canada	13550000	Bag: 50 lbs. (22,7 kg)

	Product Code	Packaging
U.S./Canada	17350000	Bag: 50 lbs. (22,7 kg)

	Product Code	Packaging
U.S./Canada	19250000	Bag: 50 lbs. (22,7 kg)



Ultraplan® Easy

Easy-Preparation, Fast-Setting, Self-Leveling Underlayment

Ultraplan Easy is an HCT™ (High-Hydrated Cement Technology)-based, quick-setting, self-leveling underlayment that typically requires only a clean, soundly bonded substrate before application. It provides low installation costs and fast turnaround on jobsites. *Ultraplan Easy* has high strength, and it is able to withstand light foot traffic after 2 to 3 hours and vehicular rubber-wheel traffic after 3 days.

	Product Code	Packaging
U.S./Canada	24350000	Bag: 50 lbs. (22.7 kg)



Ulratop®

High-Performance, Quick-Setting, Self-Leveling Concrete Topping

Ulratop is an HCT™ (High-Hydrated Cement Technology)-based, self-leveling, self-drying topping that is specially formulated for the resurfacing and construction of interior horizontal surfaces.

Available in natural gray and white, *Ulratop* is used for fast-track resurfacing and construction of horizontal wear surfaces. *Ulratop White* maximizes the brilliance of architectural stains and integral coloring agents, providing the ultimate palette for designing unique and artistic floors. *Ulratop Natural Gray* is the ideal color to represent a natural gray concrete floor. *Ulratop* is suitable for retail stores, mall corridors and entrances, showroom floors, restaurant floors, hotel lobbies, loft apartments... nearly anywhere a unique, creative floor is desired. It also is tough enough for industrial warehouse floors and loading docks subject to continual vehicular and foot traffic.

	Product Code	Color	Packaging
U.S./Canada	19350000	White	Bag: 50 lbs. (22.7 kg)
Canada	19852000	Natural Gray	Bag: 50 lbs. (22.7 kg)



Ultraplan® M20 Plus

Quick-Setting, Self-Leveling Concrete Topping and Underlayment

Ultraplan M20 Plus is an HCT™ (High-Hydrated Cement Technology)-based, quick-setting self-leveling, self-drying material. It is specially formulated for the resurfacing and construction of interior horizontal surfaces as a light-traffic industrial or commercial wear topping or underlayment for floor coverings. This light gray product can be used for fast-track resurfacing and construction of horizontal wear surfaces. It also is designed to accept architectural stains as well as industrial/commercial sealers and coatings.

Ultraplan M20 Plus is also tough enough for industrial warehouse floors and loading docks subject to continual light vehicular and foot traffic. Ceramic tile and natural stone can be installed in as little as 3 to 4 hours after application. Floor coverings – such as carpet, vinyl sheet goods, vinyl tile, vinyl composition tile (VCT), homogenous PVC, rubber, engineered wood plank, and polymer floor coatings and toppings – can be installed 16 to 24 hours after application.

	Product Code	Packaging
U.S./Canada	19250000	Bag: 50 lbs. (22.7 kg)



Primer L™

Advanced-Technology Acrylic Latex Primer for Concrete

Primer L is a concentrated, solvent-free acrylic primer used before the installation of underlayments and topping materials. It is green for easy identification. *Primer L* improves the bond between a properly prepared and profiled concrete substrate, and self-leveling underlayment or topping materials.

Primer WE™

Water-Based Epoxy Primer

Primer WE is a two-component, polymer-modified, solvent-free water-based epoxy primer for enhanced adhesion to nonporous substrates before the application of MAPEI self-leveling materials. When mixed, *Primer WE* is purple for easy identification. It improves adhesion over smooth, nonabsorbent and difficult-to-bond-to substrates such as properly prepared ceramic tile, cement-based terrazzo, old cutback adhesive residue and approved plywood subfloors.

Planibond® EBA

Epoxy Bonding Agent and Primer

Planibond EBA is a two-component, multipurpose epoxy bonding agent and primer. *Planibond EBA* is nonshrinking, 100%-solids and moisture-insensitive. (Note: This is not a moisture-reduction barrier coating.) *Planibond EBA* is used primarily as a primer for MAPEI self-leveling materials, and as a bonding agent for screeds and repair mortars, with applications for corrosion protection and crack repair. *Planibond EBA* meets ASTM C881 requirements.

	Product Code	Packaging
U.S./Canada	36053000	Jug: 1 U.S. gal. (3,79 L)
	36068000	Pail: 5 U.S. gal. (18,9 L)

	Product Code	Packaging
U.S./Canada	45457000	Kit: 2 U.S. gal. (7,57 L)
	45468000	Part A: 5 U.S. gal. (18,9 L)
	45568000	Part B: 5 U.S. gal. (18,9 L)

	Product Code	Packaging
U.S./Canada	40158000	Kit: 2 U.S. gal. (7,57 L)
	40169000	Part A: 5 U.S. gal. (18,9 L)
	40269000	Part B: 5 U.S. gal. (18,9 L)



Mapecem® Quickpatch

High-Performance, High-Flow Concrete Patch

Mapecem Quickpatch is a versatile, fast-setting, cementitious material used for the patching of interior/exterior concrete surfaces including concrete floors, driveways, sidewalks and concrete pads. *Mapecem Quickpatch* features extraordinary ease of placement, with a variable water ratio and outstanding workability. Light gray *Mapecem Quickpatch* can be applied from featheredge to 3" (7,5 cm) for ramping or filling. That makes it ideal for restoring weathered, damaged concrete surfaces to a uniform, superior-wearing and better-than-new appearance. When used for horizontal substrate repair before application of self-leveling underlayments, *Mapecem Quickpatch* sets fast for easy and cost-efficient repairs, minimizing jobsite turnaround time.

	Product Code	Packaging
U.S.	10510000	Bag: 10 lbs. (4,54 kg)
	10525000	Bag: 25 lbs. (11,3 kg)
Canada	1051000021	Bag: 10 lbs. (4,54 kg)
	10525000	Bag: 25 lbs. (11,3 kg)

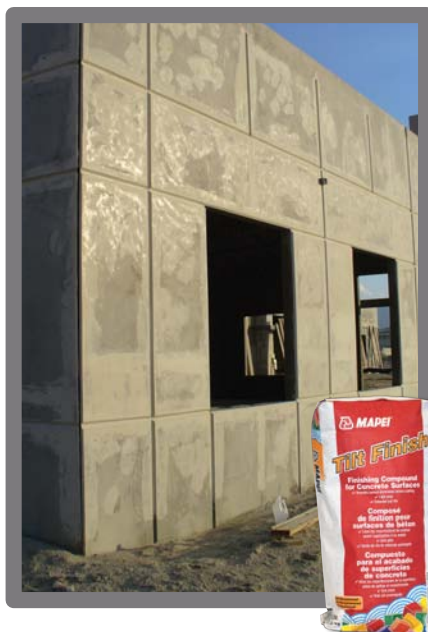


Tilt Finish™

Fast-Setting, Concrete Smoothing and Finishing Compound

Tilt Finish is a versatile, fast-setting, polymer-modified material blending calcium aluminate and Portland cement. *Tilt Finish* is ideal for producing a smooth finish on concrete surfaces including tilt wall, poured-in-place concrete, masonry, pre-cast beams and columns. *Tilt Finish* features extraordinary ease of placement, with a variable water ratio, extended pot life and outstanding workability. Light gray *Tilt Finish* can be applied from featheredge, up to 1/2" (12 mm) in confined areas and up to 1/8" (3 mm) over large surface areas. Ease of placement makes it ideal for covering imperfections in concrete surfaces, providing a uniform, light gray appearance, or a smooth surface before painting or application of coating.

	Product Code	Packaging
U.S./Canada	14725000	Bag: 25 lbs. (11,3 kg)



Topcem™ Premix

Ready-to-Use, Accelerated-Cure Screed

Topcem Premix is a ready-to-use mortar requiring only the addition of water. *Topcem Premix* is suitable in both bonded and unbonded, interior and exterior applications. *Topcem Premix* has an accelerated cure, allowing for installation of ceramic flooring in 24 hours after placement, and nonbreathable flooring systems in 48 hours. *Topcem Premix* can easily be screeded or sloped, and has the workability and working time of conventional mortars but with a much faster curing time. It is ideal for interior or exterior repairs such as filling trenches, re-sloping balconies, and forming screeds that may or may not receive subsequent flooring installations.

	Product Code	Packaging
U.S./Canada	15740000	Bag: 40 lbs. (18,1 kg)



Mapecem® 100

High-Build, One-Component, Fast-Setting Mortar

Mapecem 100 is a one-component, shrinkage-compensated, cementitious mortar intended for the renovation and topping of interior horizontal concrete and engineer-approved surfaces. *Mapecem 100* is used for treating concrete defects; filling honeycombs, voids and cavities; and construction or repair of new and existing concrete slabs. This mortar also is used when floating or monolithic toppings are required.

When properly used, *Mapecem 100* has a residual moisture content of less than 2.5% within 24 hours. Mixed with water, *Mapecem 100* produces a mortar that is easy to apply on horizontal surfaces in thicknesses of 3/8" to 4" (10 mm to 10 cm) for a bonded system, and 1-3/8" to 4" (3,5 to 10 cm) for a nonbonded system. With the addition of *Planicrete® PM*, *Mapecem 100* can be pumped (see Technical Data Sheet for details). *Mapecem 100* can be opened to traffic within 3 to 4 hours. No curing is required. (Protect application in adverse climatic conditions, such as heat and wind.)

Planicrete® PM

Acrylic Latex Admixture for Mapecem® 100

Planicrete PM is a one-component polymer admixture used to enhance the performance of *Mapecem 100*. *Planicrete PM* is nonreemulsifiable, according to the American Concrete Institute (ACI).

Mapecem® 101

Thin-Build, One-Component, Fast-Setting Mortar

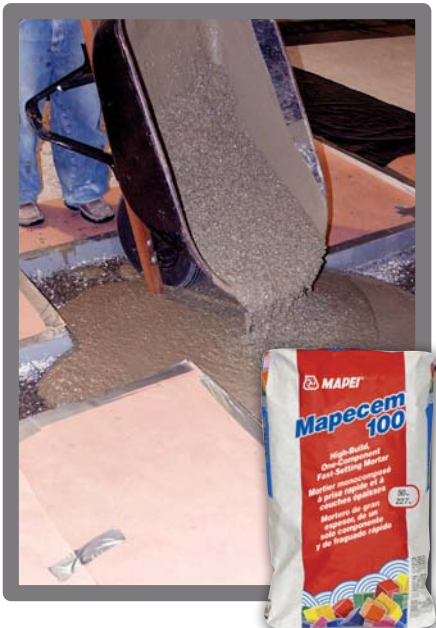
Mapecem 101 is a one-component, shrinkage-compensated, polymer-modified, cementitious mortar intended for the renovation and topping of interior/exterior horizontal concrete surfaces. It is designed for factory floor repair, loading docks, warehouse floors and other applications where severe wear resistance and abrasion resistance are required. Use *Mapecem 101* for renovation of concrete structures such as tunnels, bridges, overpasses, industrial floors, warehouse floors, factory floors and loading docks; new and existing concrete slabs; and the construction and repair of monolithic toppings where fast drying is required.

When properly mixed, *Mapecem 101* has a residual moisture content of less than 2.5% within 24 hours. Mixed with water, *Mapecem 101* produces a mortar that is easy to apply on horizontal surfaces of 1/16" to 1" (1,5 mm to 2,5 cm) for spot patching and up to a maximum of 1/4" (6 mm) thick for large areas. *Mapecem 101* achieves an impressive compressive strength of 5,500 psi (37,9 MPa) at 28 days.

	Product Code	Packaging
U.S./Canada	1745000	Bag: 50 lbs. (22,7 kg)

	Product Code	Packaging
U.S./Canada	33868000	Pail: 5 U.S. gal. (18,9 L)

	Product Code	Packaging
U.S./Canada	17755000	Bag: 55 lbs. (24,9 kg)



Mapecem® 102

Medium-Build, One-Component, Fast-Setting Mortar

Mapecem 102 is a one-component, shrinkage-compensated, polymer-modified, fast-setting cementitious mortar with corrosion inhibitor. Mapecem 102 is intended for the renovation and topping of interior/exterior horizontal concrete surfaces, such as galleries, tunnels, bridges, overpasses, factory floors, warehouse floors and loading docks; new and existing concrete slabs; and the construction of floating or monolithic toppings where fast drying is required to allow traffic within 3 to 4 hours.

Mapecem® 202

Medium-Build, Two-Component, Fast-Setting Mortar

Mapecem 202 is a two-component, shrinkage-compensated, polymer-modified, fast-setting cementitious mortar with corrosion inhibitor. Mapecem 202 is intended for the renovation and topping of interior/exterior horizontal concrete surfaces. Mapecem 202 is excellent for heavy-duty industrial applications that include manufacturing floors, loading docks and tipping floors for smelting metals, where fast drying is required to allow traffic within 3 to 4 hours. Mapecem 202 achieves an impressive compressive strength of 6,700 psi (46.2 MPa) in 28 days.

Planitop® X

Fast-Setting Horizontal, Vertical and Overhead One-Component Repair Mortar

Planitop X is a one-component, shrinkage-compensated, fast-setting, polymer-modified, high-build cementitious repair mortar with a corrosion inhibitor. It is suited for all interior/exterior vertical, overhead and horizontal concrete applications, including precast/prestressed, tilt-up, post-tensioned and cast-in-place concrete. Planitop X can be applied in thicknesses of featheredge to 4" (0 to 10 cm) per lift. Planitop X is engineered with MAPEI's Easy Glide Technology™ for ease of application and is light gray to match existing concrete surfaces.

When properly mixed, Mapecem 202 has a residual moisture content of less than 2.5% within 24 hours. It applies easily onto horizontal surfaces in thicknesses of 1/4" to 2" (6 mm to 5 cm) maximum per placement. For filling deeper spaces (up to 8" [20 cm]), add up to 20% by weight of 1/4" to 3/8" (6 to 10 mm) washed, nonreactive SSD (saturated surface-dry) aggregate to the Mapecem 202.

	Product Code	Packaging
U.S./Canada	0151025	Bag: 55 lbs. (24.9 kg)

	Product Code	Packaging
U.S./Canada	0150025	Part A: 55 lbs. (24.9 kg)
	0150003	Part B: 0.71 U.S. gal. (2.69 L)

	Product Code	Packaging
U.S.	12850000	Bag: 50 lbs. (22.7 kg)
	12850010	Bag: 10 lbs. (4.54 kg)
	12851000	Pail: 50 lbs. (22.7 kg)
Canada	12850000	Bag: 50 lbs. (22.7 kg)
	1285001021	Bag: 10 lbs. (4.54 kg)
	12851000	Pail: 50 lbs. (22.7 kg)



Planitop® XS

Extended-Working-Time, Vertical and Overhead One-Part Repair Mortar

Planitop XS is an extended-working-time variation of *Planitop X*. Shrinkage-compensated, fiber-reinforced and polymer-modified, *Planitop XS* features *Planitop X*'s outstanding workability and corrosion inhibitor. Ideal for use in a wide variety of vertical and overhead concrete repairs, *Planitop XS* can be applied in thicknesses of featheredge to 4" (0 to 10 cm) per lift. *Planitop XS* is engineered with MAPEI's Easy Glide Technology™ for ease of application and is light gray to match existing concrete surfaces.

Planitop® 12

Vertical and Overhead One-Component Repair Mortar

Planitop 12 is a one-component, shrinkage-compensated, cementitious, thixotropic, fiber-reinforced mortar intended for the renovation of vertical and overhead concrete surfaces. *Planitop 12* contains a corrosion inhibitor. Use it for overhead structural concrete repairs and restoration up to a thickness of 2" (5 cm). *Planitop 12* can be placed in large quantities in overhead applications and is suited for precast, cast-in-place, post-tensioned and prestressed concrete repair.

Planitop® 15

Form-and-Pour, One-Component Repair Mortar

Planitop 15 is a one-component, shrinkage-compensated, cementitious, fiber-reinforced, fluid mortar. *Planitop 15* contains a corrosion inhibitor and is suited for form-and-pour applications where high early strength and flowability are required.

	Product Code	Packaging
U.S./Canada	13050000	Bag: 50 lbs. (22,7 kg)
	13051000	Pail: 50 lbs. (22,7 kg)

	Product Code	Packaging
U.S./Canada	2012025	Bag: 55 lbs. (24,9 kg)

	Product Code	Packaging
U.S./Canada	2015025	Bag: 55 lbs. (24,9 kg)



Concrete Repair Mortars

Planitop® 18

Fast-Setting, Flowable, One-Component Repair Mortar

Planitop 18 is a one-component, shrinkage-compensated, fast-setting, cementitious repair mortar with corrosion inhibitor. It is suited for all interior/exterior horizontal concrete repairs, including bridge-deck overlays, parking-garage floor repairs and various horizontal DOT concrete repairs.

Planitop® 21

Thin-Build, Two-Component Rendering Mortar

Planitop 21 is a pre-proportioned, two-component, polymer-modified cementitious mortar. It is used for renovating and resurfacing interior/exterior concrete structures such as galleries, tunnels, bridges, overpasses, retaining walls, beams, building facades and ceilings. Planitop 21 also is used for treating concrete surface blemishes and defects; filling honeycombs, voids and cavities; and protecting concrete against pollutants and acid rain.

Planitop 21 contains a high concentration of synthetic polymer, which produces a repair mortar having excellent adhesion, flexural strength, compressive strength, water impermeability and freeze/thaw resistance. Apply up to 1/4" (6 mm) thick.

Planitop® 23

Vertical and Overhead Two-Component Repair Mortar

Planitop 23 is a pre-proportioned, two-component, fast-setting, polymer-modified, thixotropic, cementitious fiber-reinforced mortar, with a corrosion inhibitor. It is used for renovating and resurfacing interior/exterior concrete structures such as galleries, tunnels, bridges, overpasses, retaining walls, beams, building facades and ceilings. Planitop 23 also is used for treating concrete surface blemishes and defects; filling honeycombs, voids and cavities; and protecting concrete against pollutants and acid rain. With a high concentration of synthetic polymer and fiber, Planitop 23 offers excellent adhesion, flexural strength, compressive strength, water impermeability and freeze/thaw resistance. Once mixed, the mortar applies easily onto vertical, horizontal and overhead ceiling surfaces, in thicknesses of 1/8" to 2" (3 mm to 5 cm) per coat.

	Product Code	Packaging
U.S./Canada	17950000 17951000	Bag: 50 lbs. (22.7 kg) Pail: 50 lbs. (22.7 kg)

	Product Code	Packaging
U.S./Canada	17545000 4024004	Bag: Part A: 45.8 lbs. (20.8 kg) Jug: Part B: 1.05 U.S. gal. (3.97 L)

	Product Code	Packaging
U.S./Canada	4023026 4024004	Bag: Part A: 57.3 lbs. (26 kg) Jug: Part B: 1.05 U.S. gal. (3.97 L)



Planitop® 25

Flowable Two-Component Repair Mortar

Planitop 25 is a two-component, shrinkage-compensated, cementitious, flowable resurfacing mortar with corrosion inhibitor. Once mixed, the mortar applies easily onto horizontal surfaces in thicknesses of 1/4" to 1" (6 mm to 2,5 cm) per coat. *Planitop 25* contains a high concentration of synthetic polymer, which produces a dense, durable resurfacing mortar with outstanding adhesion, flexural and compression strengths. It also has very low permeability, offering high resistance to freeze/thaw cycles and chloride ion penetration. *Planitop 25* is formulated for demanding industrial repairs involving heavy impact and high abrasion, such as loading docks, warehouse floors, and areas subject to forklift and pallet jacks.

NEW

Planigrout® 712

High-Performance, Nonshrinking Cementitious Grout

Planigrout 712 is a one-component, nonshrinking, nonmetallic, cement-based construction grout that meets CRD C621 and ASTM C1107 (Grade C) standards. *Planigrout 712* contains a corrosion inhibitor and silica fume, as well as a special blend of aggregate, plasticizers and water-reducing agents that provide exceptional placing and performance characteristics.

Planigrout® 740

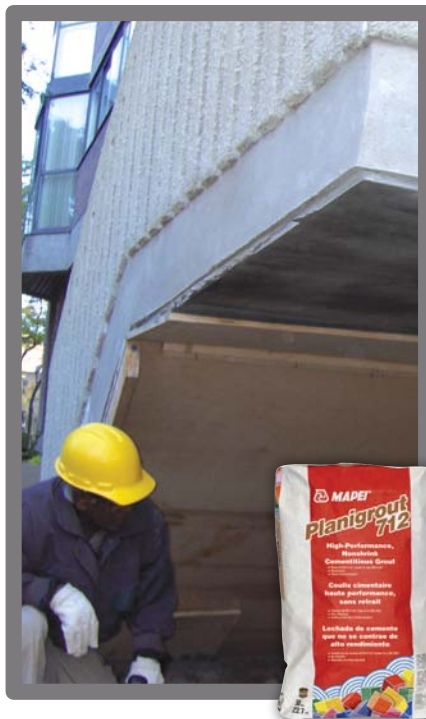
Cement-Based Precision and Tremie Grout

Planigrout 740 is a high-strength, fluid, preblended, shrinkage-compensated, cementitious precision and tremie grout composed of selected fine aggregates and special additives. *Planigrout 740* requires only the addition of water to produce consistencies from plastic to very fluid, without separation, which allows the filling of hard-to-reach spaces and underwater repairs. Containing anti-washout agents and shrinkage-compensation agents, *Planigrout 740* provides high compressive and flexural strengths relatively quickly.

	Product Code	Packaging
U.S./Canada	17603000 4024004	Bag: Part A: 57.3 lbs. (26 kg) Jug: Part B: 1.05 U.S. gal. (3.97 L)

	Product Code	Packaging
U.S./Canada	15850000	Bag: 50 lbs. (22,7 kg)

	Product Code	Packaging
U.S./Canada	4074025	Bag: 55 lbs. (24,9 kg)



Planigrout® 755

Cement-Based, General-Purpose Construction Grout

Planigrout 755 is a one-component, shrinkage-compensated, cementitious construction grout consisting of selected fine aggregates and special additives. *Planigrout 755* requires only the addition of water to produce consistencies varying from dry pack to flowable (without segregation). In addition, it produces excellent compressive and flexural strengths within a few days.

Concrete Renew™

Exterior, Cementitious Concrete Resurfacer

Concrete Renew is a one-component, polymer-modified cementitious material for the resurfacing of existing concrete. It is suitable for broom finishes and decorative trowel finishes on sidewalks, driveways, steps and anywhere that has exposed concrete. *Concrete Renew* features a natural light gray color that provides a uniform, like-new look to concrete surfaces.

Concrete Renew™ Fine

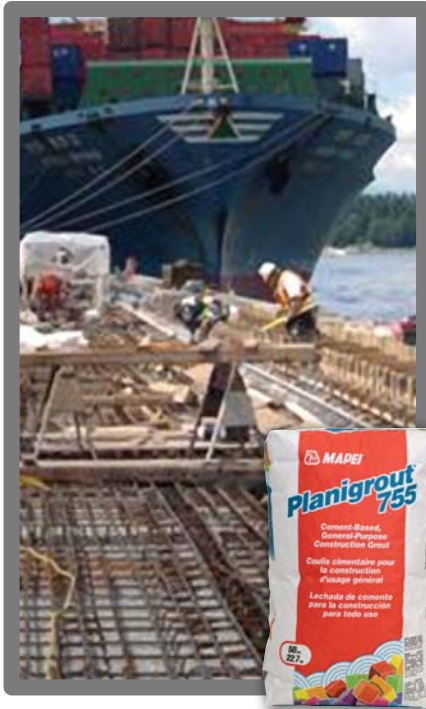
Fine-Grade, Exterior, Cementitious Concrete Resurfacer

Concrete Renew Fine is a one-component, polymer-modified cementitious material for the resurfacing of existing concrete. It allows a variety of finishing options, including broom finishes and decorative trowel finishes, on sidewalks, driveways, steps and anywhere that has exposed concrete. *Concrete Renew Fine* features a natural light gray color that provides a uniform finish to concrete surfaces.

	Product Code	Packaging
U.S./Canada	15550000	Bag: 50 lbs. (22.7 kg)

	Product Code	Packaging
U.S./Canada	11125000	Bag: 25 lbs. (11.3 kg)

	Product Code	Packaging
U.S./Canada	11126000	Bag: 25 lbs. (11.3 kg)



MAPEI Spraytop™ RS

Premium Decorative Concrete Knockdown Topping

MAPEI Spraytop RS is a one-component, polymer-modified, decorative resurfacer. MAPEI Spraytop RS can be used on any sound, stable concrete surface – both vertical and horizontal – to provide unique textured surfaces.

Mapelastic™

All-Climate, Flexible Cementitious Membrane for Concrete Waterproofing and Protection

Mapelastic is a cementitious membrane that waterproofs concrete. It also protects concrete from chemical attack by de-icing salts, sulphates, chlorides and carbon dioxide that leads to deterioration and requires costly repair. Mapelastic is designed for application on new concrete structures, concrete structures repaired with Mapecem® or Planitop® mortars and renders with hairline cracks, as well as any cementitious surface subject to vibrations and subsequent cracking. Use Mapelastic on such hydraulic projects as channels and faces of dams in addition to swimming pools, basins, storage tanks, balconies and terraces.

Mapelastic™ Smart

Roller-Grade, Flexible Cementitious Membrane for Concrete Waterproofing and Protection

Mapelastic Smart is a cementitious membrane for protecting new concrete structures, concrete structures repaired with Mapecem® or Planitop® mortars, renders with hairline cracks and any cementitious surface subject to vibrations and the subsequent cracking. Mapelastic Smart also is designed for waterproofing such hydraulic projects as channels and faces of dams as well as swimming pools, basins, storage tanks, balconies and terraces.

	Product Code	Packaging
U.S./Canada	16350000	Bag: 50 lbs. (22.7 kg)



	Product Code	Packaging
U.S./Canada	39251000 (Silver)	Bag: Part A: 50 lbs. (22.7 kg)
	39252000 (White)	Bag: Part A: 50 lbs. (22.7 kg)
	39257000	Jug: Part B: 2 U.S. gal. (7.57 L)



	Product Code	Packaging
U.S./Canada	39750000	Bag: Part A: 33.3 lbs. (15.1 kg)
	39757000	Jug: Part B: 2 U.S. gal. (7.57 L)



Planiseal™ 88

Cement-Based Waterproofing Coating

Planiseal 88 is a one-component, polymer-modified, cementitious waterproofing coating for concrete and masonry surfaces. It can be used as a waterproofing and protection coating/mortar on interior and exterior concrete and masonry surfaces such as basements, galleries, foundation walls, reservoirs, swimming pools, irrigation canals, wet rooms, retaining walls, bridges, overpasses, piers, beams, facades, ceilings and balconies.

When mixed with water, *Planiseal 88* withstands negative and positive hydrostatic pressures and can be applied to either negative- or positive-side concrete surfaces to provide waterproofing. *Planiseal 88* can be applied by trowel or brush (spray applications are recommended for larger jobs) up to 1/16" (1,5 mm) thick. Mix with *Planicrete® AC* to obtain a coating/mortar having superior adhesion, cohesion and waterproofing characteristics.

	Product Code	Packaging
U.S./	8088025 (Gray)	Bag: 55 lbs. (24,9 kg)
Canada	8088125 (White)	Bag: 55 lbs. (24,9 kg)



Planiseal™ Plug

Ultra Quick-Setting Water Stop and Anchoring Mortar

Planiseal Plug is a quick-setting mortar specially designed for stopping active water leaks, repairing concrete and anchoring. *Planiseal Plug* is used for repairing horizontal and vertical surfaces in interior or exterior concrete applications, such as:

- Repairing substrates, floors, walls, sidewalks, pipes, and precast and concrete components.
- Anchoring door and window frames and any other component that is required to be mechanically fastened to concrete substrates.
- Quick-patching any type of conduits in concrete substrates (sewers, wastewater treatment plants, etc.)
- Patching and sealing small water leaks in concrete structures very quickly.

When mixed with water, *Planiseal Plug* ensures high compression and flexural strengths in just 3 hours. Chloride-free, *Planiseal Plug* is intended for vertical and horizontal surfaces. When hardened, *Planiseal Plug* is highly resistant to water and freeze/thaw cycles.

	Product Code	Packaging
U.S./Canada	0100005	Pail: 11 lbs. (4,99 kg)
	0100025	Pail: 55 lbs. (24,9 kg)

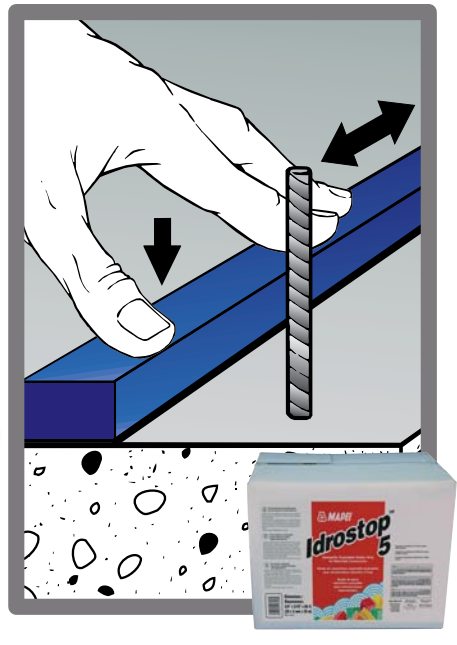


NEW Idrostop™ 5

Hydrophilic Expandable Rubber Strip for Watertight Construction

Idrostop 5 is used to produce watertight construction joints in civil, industrial and hydraulic construction. Construction joints created with *Idrostop 5* are watertight up to 1 atm of pressure.

	Product Code	Packaging
U.S./	176260	Case: 6 Rolls - 390' x 3/4" x 3/16"
Canada		(120 m x 20 mm x 5 mm)



NEW

Mapetex™ Sel

Nonwoven, Macro-Holed Polypropylene Fabric for Reinforcing Waterproofing Membranes

Mapetex Sel is a macro-holed polypropylene fabric reinforcement used together with Mapelastic™ and Mapelastic Smart flexible cementitious membranes for waterproofing and protecting new concrete surfaces or concrete units particularly subject to large deformations and, therefore, at risk of cracking. Mapetex Sel is also suitable for use on surfaces at risk of cracking following repair with products from the Mapecem® and Planitop® product groups. Mapetex Sel can help increase crack-bridging capability up to 1/8" (3 mm).

NEW

Mapeband™ TPE 170

Thermo Plastic Elastomer Tape

Mapeband TPE 170 is for flexible sealing and waterproofing of expansion joints and cracks subject to movement up to 3/16" (5 mm).

Planibond® EBA

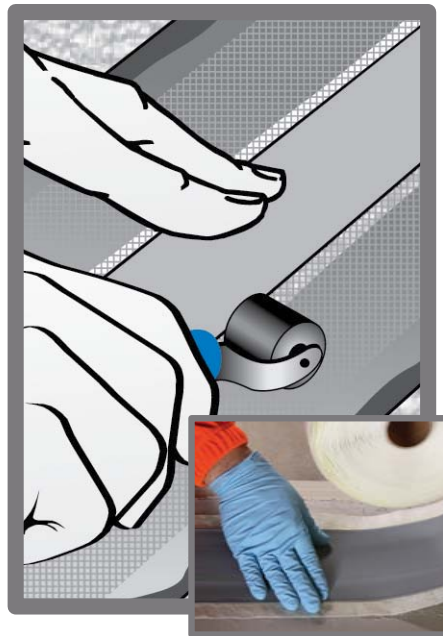
Epoxy Bonding Agent and Primer

Planibond EBA is a two-component, multipurpose epoxy bonding agent and primer. Planibond EBA is nonshrinking, 100%-solids and moisture-insensitive. (Note: This is not a moisture-reduction barrier coating.) Planibond EBA is used primarily as a primer for MAPEI self-leveling materials, and as a bonding agent for screeds and repair mortars, with applications for corrosion protection and crack repair. Planibond EBA meets ASTM C881 requirements.

	Product Code	Packaging
U.S./Canada	281625	Roll: 3.3' x 82' (1 m x 25 m)



	Product Code	Packaging
U.S./Canada	176260	Roll: 17 cm x 30 m (6.7" x 98')



	Product Code	Packaging
U.S./Canada	40158000	Kit: 2 U.S. qt. (7,57 L)
	40169000	Part A: 5 U.S. gal. (18,9 L)
	40269000	Part B: 5 U.S. gal. (18,9 L)



NEW

Planibond® JF

Semi-Rigid Epoxy Joint Filler

Planibond JF is a two-part, 100%-solids, moisture-tolerant, semi-rigid epoxy joint filler. *Planibond JF* meets ASTM C881 and ACI 302 requirements as well as USDA specifications for food-processing areas. The self-leveling *Planibond JF* is ideal for filling and sealing horizontal non-moving saw-cut control joints and random cracks.

NEW

Planibond® AE

High-Strength, Nonsag Epoxy Anchoring Gel

Planibond AE is a high-strength, two-part, nonsag, epoxy anchoring gel designed for a wide variety of bonding and repair applications. With VOC compliance and low odor, *Planibond AE* meets ASTM C881; Types I, II, IV and V; and Grade 3, Classes B and C; as well as USDA specifications for food-processing areas. *Planibond AE* is moisture-tolerant and may be extended with graded sands. *Planibond AE* adheres to masonry, concrete, steel and other structural materials.

NEW

Planibond® CR 50

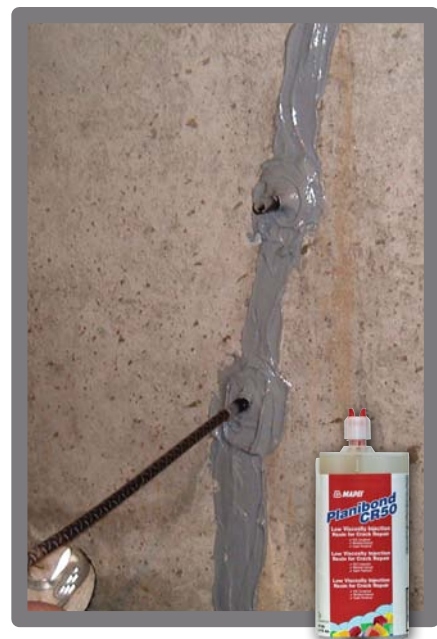
Low-Viscosity Injection Resin for Crack Repair

Planibond CR 50 is a two-part, low-viscosity injection resin that deeply penetrates the finest hairline cracks, restoring the structural integrity of concrete. High-strength and moisture-tolerant, *Planibond CR 50* meets ASTM C881; Types I, II, IV and V; and Grade 1, Class B and C; as well as USDA specifications for use in food-processing areas. *Planibond CR 50* may be applied by pressure injection or gravity feed, and can also be combined with sand to become an epoxy mortar or grout. *Planibond CR 50* features a fluorescent tracer dye, allowing easy analysis of penetration in repair core samples.

	Product Code	Packaging
U.S./Canada	46057	Kit: 2 U.S. gal. (7,57 L)
	46074	Cartridge: 22 U.S. oz. (651 mL)

	Product Code	Packaging
U.S./Canada	40474	Cartridge: 22 U.S. oz. (651 mL)

	Product Code	Packaging
U.S./Canada	46199	Cartridge: 13.5 U.S. oz. (384 mL)
	46161	Kit: 3 U.S. gal. (11,4 L)



NEW

Planiseal™ Traffic Coat

Epoxy Overlay for Vehicular and Pedestrian Traffic

Planiseal Traffic Coat is a solvent-free, moisture-tolerant, 100%-solids, low-modulus, two-part, epoxy bonding agent and binder engineered for providing a waterproof and skid-resistant overlay on such surfaces as bridges, elevated slabs, parking garages and balconies. *Planiseal Traffic Coat* arrests carbonation and stops the penetration of chloride ions into concrete decks, while providing a skid-resistant, durable and attractive finish.

Planicrete® AC

Acrylic Latex Admixture for Mortar and Concrete

Planicrete AC is a one-component, concentrated, liquid latex admixture used to enhance the performance of cementitious repair mortars, plasters, stuccos, concrete mixes and toppings for the restoration of horizontal, vertical and overhead concrete; concrete masonry units (CMUs); and masonry surfaces. It is used as an admixture in all cement-based masonry mortars, stucco, sand and cement repair mortars, and any other cement-based material to improve adhesion and reduce permeability. *Planicrete AC* also will increase compressive, flexural and tensile strengths. When mixed with Portland cement, *Planicrete AC* also can be used as a slurry bond coat for concrete.

Planicrete® PM

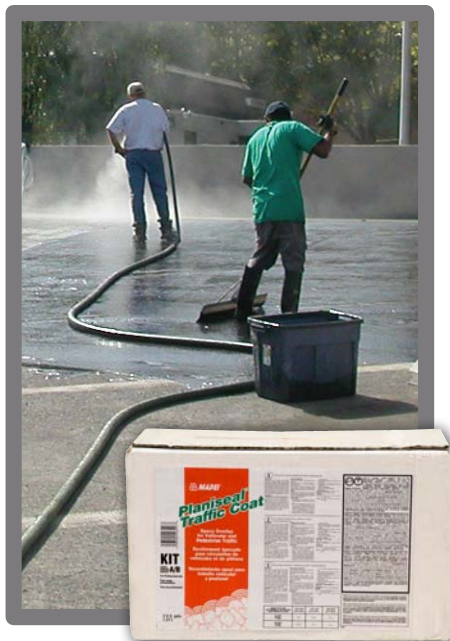
Acrylic Latex Admixture for Mapecem® 100

Planicrete PM is a one-component polymer admixture used to enhance the performance of *Mapecem 100*. *Planicrete PM* is nonreemulsifiable, according to the American Concrete Institute (ACI).

	Product Code	Packaging
U.S./Canada	46557	Kit: 2 U.S. gal. (7,57 L)
	46568	Part A: 5 U.S. gal. (18,9 L)
	46569	Part B: 5 U.S. gal. (18,9 L)
	46577	Part A: 55 U.S. gal. (242,3 L)
	46578	Part B: 55 U.S. gal. (242,3 L)

	Product Code	Packaging
U.S./Canada	7013004	Jug: 1 U.S. gal. (3,79 L)
	7013020	Pail: 5 U.S. gal. (18,9 L)

	Product Code	Packaging
U.S./Canada	33868000	Pail: 5 U.S. gal. (18,9 L)



Mapecure™ SRA

Shrinkage- and Crack-Reduction Curing Additive

Mapecure SRA is a liquid admixture that reacts chemically to reduce hydraulic shrinkage and the formation of microcracks. Mapecure SRA is compatible with traditional MAPEI concrete restoration materials, such as cementitious grouts and most repair mortars.

Mapefer™ 1K

Corrosion-Inhibiting Coating for Reinforcing Bar

Mapefer 1K is a one-component anticorrosion and bonding mortar based on unique polymers, cementitious binders and corrosion inhibitors. Mapefer 1K should be applied on clean reinforcing steel to inhibit oxidation and rust formation.

Planibond® 3C

Three-Component, Cement-Based Anticorrosion and Bonding Agent

Planibond 3C is a three-component corrosion inhibitor and bonding agent system consisting of water-based, solvent-free, moisture-tolerant, epoxy-modified corrosion inhibitors. It can be applied using a brush, short-nap roller, push broom or hopper spray equipment. Planibond 3C excels as a cementitious bonding agent and corrosion protection treatment. Use Planibond 3C on all exposed reinforcing steel and as a bonding agent before the placement of repair products.

	Product Code	Packaging
U.S./Canada	169720	Pail: 5 U.S. gal. (18,9 L)



	Product Code	Packaging
U.S./Canada	276645	10 lbs. (4,54 kg): form-and-fill



	Product Code	Packaging
U.S./Canada	36364000	1 Large Kit





Mapefinish™ Wet Look

Premium, High-Gloss Water-Based Acrylic Sealer

Mapefinish Wet Look is a one-part, water-based, transparent high-gloss sealer for concrete surfaces that exceeds the Americans with Disabilities Act requirements for slip resistance. Mapefinish Wet Look utilizes acrylic epoxy hybrid resins that offer superior abrasion, blush and slip resistance, outperforming most solvent-based acrylics and many urethane dispersions. Mapefinish Wet Look is low in VOCs, odor-free and permeable to water vapor, making it perfect for application on interior and exterior concrete surfaces and on epoxy coatings. Mapefinish Wet Look enhances color with a user-friendly installation and superior performance.

	Product Code	Packaging
U.S./Canada	31668000	Pail: 5 U.S. gal. (18,9 L)



TECHNOLOGY YOU CAN BUILD ON™



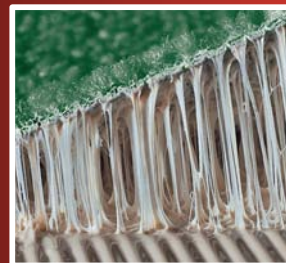
Concrete Restoration Systems

- Self-Leveling Underlayments • Self-Leveling Toppings
- Primers for Self-Leveling
- Patching and Skimcoating Compounds • Screeds
- Concrete Repair Mortars • Construction Grouts
- Exterior Refinishing • Waterproofing • Repair Epoxies
- Curing Compounds and Admixtures • Corrosion Protection • Sealer



Tile & Stone Installation Systems

- Surface Preparation Products
- Membrane Systems & Waterproofing Products
- Mortars • Mastics • Grouts • Caulks
- Finishing and Care Product



Floor Covering Installation Systems

- Carpet Adhesives
- Flooring Adhesives
- Resilient Adhesives
- Wood Adhesives
- Moisture-Control Products
- Patching and Repair Products

MAPEI Worldwide Locations

UNITED STATES

Arizona
California
Florida
Illinois
New Jersey
Texas
Virginia

CANADA

British Columbia
Ontario
Quebec

SOUTH AMERICA/CARIBBEAN

Argentina
Puerto Rico
Venezuela

EUROPE

Austria
Belgium
Benelux
Croatia
Czech Republic
Finland
France
Germany
Greece
Hungary
Italy
Luxembourg
Netherlands
Norway
Poland
Portugal
Romania
Russia
Slovakia
Slovenia
Spain
Sweden
Switzerland
Ukraine
United Kingdom

ASIA/OCEANIA

United Arab Emirates
Australia
China
Hong Kong
Malaysia
New Zealand
Singapore
Vietnam

AFRICA

Egypt



Headquarters of the Americas
1144 East Newport Center Drive Deerfield
Beach, FL 33442
Phone: 1-888-US-MAPEI
(1-888-876-2734)
Fax: (954) 246-8800

Customer Service

1-800-42-MAPEI (1-800-426-2734)

Technical Services

1-800-992-6273 (U.S. and Puerto Rico)
1-800-361-9309 (Canada)

For more information on the complete line of **MAPEI** products,
visit our Website at www.mapei.com.



www.mapei.com

MAPEI[®]
TECHNOLOGY YOU CAN BUILD ON™