

## TECTUM Fabri-Tough Wall Panels

Abuse-resistant Tectum Fabri-Tough acoustical wall panels set a new standard for durability in fabric wrapped wall panel systems.

Control noise efficiently, economically and attractively in open plan, closed or mixed-use space with the Fabri-Tough wall panel system. Efficiently because Fabri-Tough wall panels can provide NRC's from .50 up to .90 depending on mounting, economically because these panels are competitively priced and long-lasting and attractively because they come in your choice of HytexRib or Acoustical Renaissance fabric colors.

Tackability is an added feature of all Tectum Fabri-Tough panels. They can be used repeatedly as bulletin or display boards without visible effect, making them ideal for work areas, conference rooms and classrooms.

The fabric facing is composed of fibers that are manufactured from 100% post-consumer waste by EcoSpun®.

Fabri-Tough wall panel systems are available 1" thick, 24" x 48" up to 120". Fabri-Tough wall panels can be field cut to desired size. For panels to be used in recessed areas, some field adjusting may be necessary.

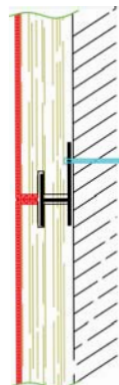
Tectum Fabri-Tough Kerfed and Décor Panels have a flame spread of 25 or less under the ASTM E84 test method. Both panels meet the requirements of the room corner fire test (UBC 8-2 or equivalent) for use in areas not protected by automatic sprinklers.

### Fabri-Tough Kerfed Panels

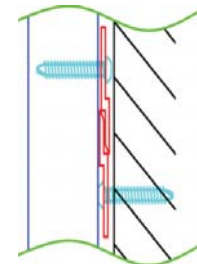
Mounting is quick and easy via the internal spline system. The wall panel fabric is wrapped around the edges of the long sides to the kerf. Panels are installed by inserting the furnished vinyl splines into the kerf, then fastening the splines to the wall or other structure.

### Fabri-Tough Décor Panels

Tectum Fabri-Tough Décor Panels have fully wrapped edges and are attached using 20" Z-Clips allowing for panels to be strategically placed in a space as opposed to consecutive attachment.



Fabri-Tough Wall Panels are mounted using the internal spline system.



Décor Panel attachment with clips.

P.O. Box 3002  
Newark, OH 43058

**TECTUM<sup>INC</sup>**  
The Noise Control Solution

105 S. 6th St.  
Newark, OH 43055

## TECTUM ACOUSTICAL PERFORMANCE

### FABRI-TOUGH WALL PANEL SYSTEM

Panel Type	SOUND ABSORPTION COEFFICIENTS							NRC	MOUNTING
	125	250	500	1000	2000	4000			
1"	.05	.16	.30	.57	.94	.70	.50	A	
1"	.13	.19	.45	.86	.80	.84	.60	D-20	
1"	.30	.77	1.11	.98	.79	.95	.90	C-40	

## TECTUM PRODUCT

Panel Type	Nominal Thickness (inches)	Actual Size (inches)	Edge Detail	Factory Finish	Light Reflectance	Flame Spread	Weight LBS/SF	
							1"	2"

### FABRI-TOUGH WALL PANEL SYSTEM

Fabric Wrapped Tectum Panel	1	24 x 48 up to 120	Long Edges, Fabric Wrapped to Kerf	Fabric Selection	N/A	0-25	1.70	
-----------------------------	---	-------------------	------------------------------------	------------------	-----	------	------	--

### FABRI-TOUGH DECOR PANELS

Fabric Wrapped Tectum Panel	1, 2	24, 48 x 48 up to 120	Fabric returned at edges to back	Fabric Selection	N/A	0-25	1.70	3.60
-----------------------------	------	-----------------------	----------------------------------	------------------	-----	------	------	------

## ENVIRONMENTAL INFORMATION

The wood fibers (excelsior) used in Tectum panels come from Wisconsin Aspen trees. The Wisconsin Aspen is a self-propagating type tree. When cut, a new tree will begin to grow back from its root structure. In addition, all Wisconsin Aspen used for Tectum is air-dried. No drying kilns are used. The wood is stored in racks to age naturally. No chemicals are used in the production of any excelsior purchased by Tectum Inc.

All excelsior used in Tectum products comes from a single source that is affiliated with both the Forest Stewardship Council (FSC) and the Sustainable Forestry Initiatives (SFI) programs. These programs are a comprehensive system of objectives and performance measures that integrate the perpetual growing and harvesting of trees with the protection of wildlife, plants, soil and water quality. All loggers are trained to adhere to FSC and SFI principles.

Magnesium oxide is mixed with magnesium sulfate (Epsom salts) to form the primary binder. The magnesium sulfate solution has been manufactured on site by

reclaiming waste materials since production began in 1949. The secondary binder is composed of sodium silicate and calcium carbonate (limestone). All of the water used in the manufacture of Tectum is captured and recycled.

### TECTUM PRODUCTS AND LEED

Tectum Inc. fully endorses the LEED Green Building Rating System.

Our products may contribute to the following LEED credit areas:

EA Prerequisite 2: Minimum Energy Performance

EA Credit 1: Optimized Energy Performance

MR Credit 2: Construction Site Waste Management

MR Credit 4: Recycled Content

MR Credit 5: Regional Materials

MR Credit 6: Rapidly Renewable Resources

MR Credit 7: Certified Wood

EQ Prerequisite 3 (LEED for Schools): Minimum Acoustical Performance

EQ Credit 3.1 and 3.2: Construction IAQ Plans

EQ Credit 4.1: Low-Emitting Materials, Adhesives and Sealants

EQ Credit 4.4: Low-Emitting Materials, Composite Wood & Agrifiber Products

EQ Credit 10 (LEED for Schools): Mold Prevention

EQ Credit 11 (LEED for Schools): Low-Impact Cleaning and Maintenance Equipment Policy

ID Credit 1: Innovation in Design

Tectum products are listed in the GreenSpec Directory\*\* published by Building Green from the editors of Environmental Building News.

For complete information about Tectum products and LEED, please see our Marketing Bulletins M-81 (Tectum Products and LEED Certification) and M-83 (Tectum Products and LEED Q & A) or our Environmental Statement. All of these materials are available online at [www.tectum.com/leed](http://www.tectum.com/leed).

\*Trademark of The U.S Green Building Council

\*\*Trademark of Building Green, Inc.