



BALCO INC

MetaFlex® 5000 MetaMat™

Balco, the industry leader of engineered fire barrier systems used in expansion joint cover systems, is pleased to introduce a revolutionary NEW intumescent fire barrier design. MetaMat™ two (2) hour rated fire barrier is a unique and proprietary thin intumescent material which allows for easy installation into small joints as well as large joints. Splices and transition requirements are easily accomplished on-site, reducing installation time, and eliminating errors.

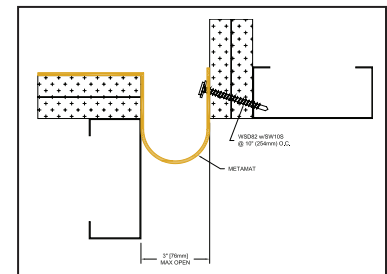
MetaFlex® 5000			
MetaMat™ - UL Listed			
FLOOR		WALL	
Model #	Application	Model #	Application
MF2H03	Floor to Floor Balco 7500 series. Roof bellows and shaft walls with maximum opening of 3" with EPDM covers.	MW2H03	All metal covers in wall to wall conditions with maximum opening of 3"
MFV2H03	Floor to Wall Balco 7500 series. Roof bellows and shaft walls with maximum opening of 3" with EPDM covers.	MCW2H03	All metal corner wall conditions with maximum opening of 3"
MF2H04F	All floor to floor conditions with metal covers maximum opening of 4" All aluminum roof covers	MW2H04	All wall to wall conditions with maximum opening of 4"
MFV2H04F	All floor to wall conditions with metal covers maximum opening of 4" All aluminum roof covers	MCW2H04	All corner wall conditions with maximum opening of 4"
MF2H06	All floor to floor conditions with metal covers with maximum opening of 6"	MW2H06	All wall to wall conditions with maximum opening of 6"
MFV2H06	All floor to wall conditions with metal covers with maximum opening of 6"	MCW2H06	All corner conditions with maximum opening of 6"

Material sold in 20 linear foot increments, on 20 foot, 40 foot or 80 foot rolls

Features and Benefits

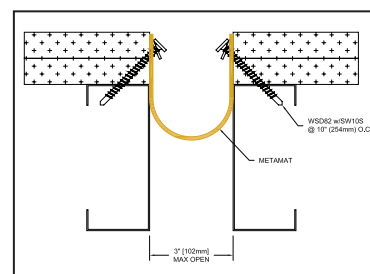
- Cycle tested in accordance with ASTM E 1399
- Tested in accordance with the latest test standards and code requirements for fire resistive joint systems (ASTM E1966 and UL 2079 and IBC and NFPA 5000)
- 2 hour fire rating in joints up to 6" maximum opening
- Can be used with metallic joint cover systems and elastomeric joint cover systems for both interior and exterior applications.
- Cost effective
- Easy to install
- Light weight for easy handling
- Easily fits into small joints
- Easy to splice and create transitions
- No caulk required
- Contains no carcinogenic fillers
- Allows more joint movement than bulky blanket materials
- Contains no solvents
- Resists humidity and moisture
- Patents pending

MCW2H03



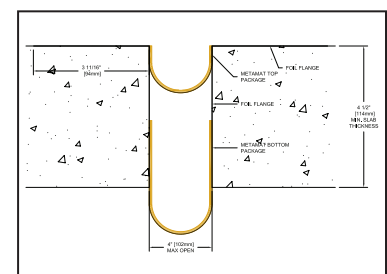
CORNER WALL

MW2H03



WALL TO WALL

MF2H04F



FLOOR TO FLOOR



BALCO INC

2626 S. Sheridan • Wichita, KS 67217
Ph: 316.945.9328 • Fx: 316.945.0789



Underwriters Laboratories Inc.®

1.800.767.0082
www.balcousa.com



MetaFlex® 5000 MetaBlock™

Thin Slab Fire Barrier

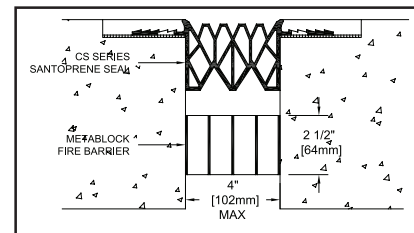
Balco, the industry leader of expansion joint fire barrier systems, is introducing a revolutionary NEW intumescent fire barrier that has been designed to be used in conjunction with Balco's DuraFlex™ Expansion Joint Systems. MetaBlock™ is a two (2), three (3), or four (4) hour rated fire barrier composed of a proprietary intumescent material which allows for easy installation with no mechanical fasteners required. Splices and transitions are easily accomplished on-site, cutting installation time in half.

FLOOR		WALL	
MetaBlock™		MetaBlock™	
MBF2H02	For use with ES and FS series and metal covers with a max open 2" - 2 Hour Rating	MBW2H02	For use with ES and FS series with a max open 2" - 2 Hour Rating
MBF2H04	For use with CS, ES and FS series and metal with a max open 4" - 2 Hour Rating	MBW2H04	For use with ES and FS series and metal with a max open 4" - 2 Hour Rating
MBF3H04	For use with CS, ES and FS series with a max open 4" - 3 Hour Rating		
MBF4H04	For use with CS, ES and FS series and metal with a max open 4" - 4 Hour Rating		

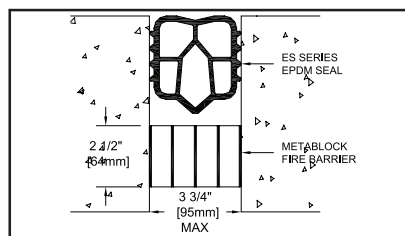
Features and Benefits

- Thin slab installation, requires only 2.5" for fire barrier
- No caulk or mechanical fasteners required
- Can be used for both Exterior and Interior Wall and Floor applications
- Can also be used with metal joint covers
- 2, 3 & 4 hour fire rating in joints up to 4" maximum opening
- Easily installs into small joints
- Easy to splice – no caulk required
- Allows +/- 50% contraction and expansion movement
- Contains no solvents or carcinogenic fillers
- Resists humidity and moisture
- Meets latest test standards and code requirements in accordance with ASTM E 1399; ASTM E 1966; UL 2079; IBC; and NFPA 5000
- Patents pending
- Available in 7 foot lengths only

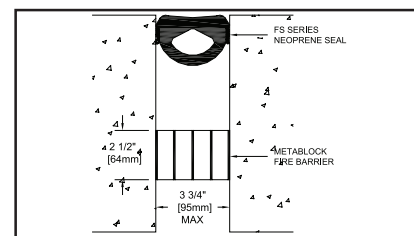
CS - 325



ES - 300



FS - 300



2626 S. Sheridan • Wichita, KS 67217
Ph: 316.945.9328 • Fx: 316.945.0789



1.800.767.0082
www.balcousa.com