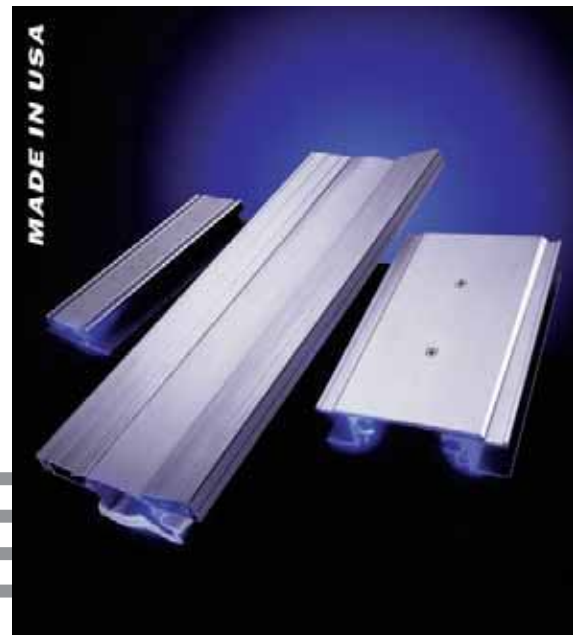




# EXPANSION JOINT COVERS

INTERIOR & EXTERIOR



**FLOOR / CEILING / WALL / ROOF**

**STAINLESS STEEL / BRONZE / ALUMINUM**

**FIRE RATED (2, 3 & 4 HOURS)**

**HEAVY DUTY, SEISMIC APPLICATIONS**

**EXTERIOR SEALS**



**BALCO INC**

[www.balcousa.com](http://www.balcousa.com)



## INDEX

### FLOOR COVERS

6000 Series.....	4
All Aluminum Floor Covers .....	6
No-Bump Floor Covers.....	7
7500 Elastomeric Floor Covers .....	8
Elastomeric Floor Covers.....	9
9500 Dual Elastomeric Floor Covers.....	10
Surface Mounted Floor Covers.....	12
Minimal Sight Line Covers.....	13
Gymnasium Floor Covers.....	14
Topping Slab Floor Covers .....	15
Seismic Floor Covers .....	16
Extra Wide Floor Covers.....	17
Extra-Heavy Duty Floor Covers .....	18
Air Terminal Floor Covers.....	20
Parking Garage Covers.....	20

### FIRE BARRIERS

#### METAFLEX FIRE BARRIER SYSTEMS

Floor Fire Barrier .....	22
Wall Fire Barrier .....	22
MetaFlex 5000	
MetaBlock Fire Barrier .....	23
MetaMat Floor Fire Barrier .....	23
MetaMat Wall Fire Barrier .....	24

### WALL AND CEILING

Clip-In Wall and Ceiling Covers .....	27
Surfaced Mounted Wall and Ceiling Covers...	28
Interior Wall Joint Covers .....	31
Gypsum Board Wall and Ceiling Covers.....	32
Suspended Ceiling Covers.....	34

### EXTERIOR WALL JOINT COVER SYSTEMS

All Aluminum .....	34
Flexible Inserts.....	35
Factory Roof Transitions.....	36
Aluminum Roof and Wall Covers .....	37
Roof Bellows .....	38

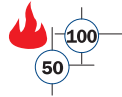
### PARKING GARAGES & OPEN AIR SYSTEMS

Exterior Expansion Joint Systems.....	40
Metal Floor Systems/Heavy Duty Systems....	44
Exterior Flat Seal Systems.....	47

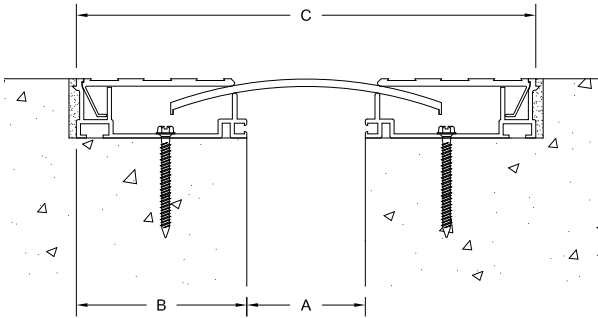




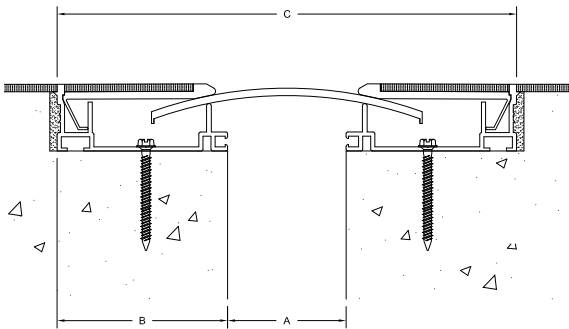
# 6000 SERIES FLOOR COVERS



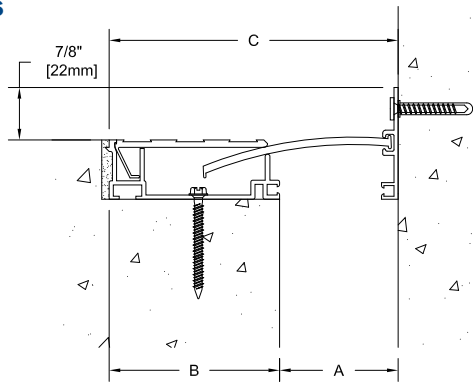
## 6FS



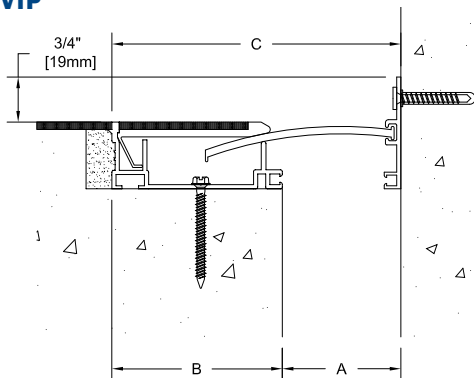
## 6FTP



## 6FVS



## 6FVTP



## 6000 Floor Series

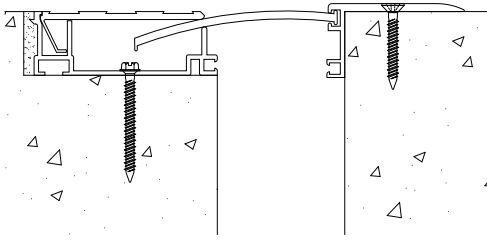
Type	A	B	C	Movement
<b>6FS-1</b>	1" (25mm)	1 7/8" (48mm)	4 3/4" (121mm)	+/- 1" (25mm)
<b>6FS-1-2</b>	2" (51mm)	1 7/8" (48mm)	5 3/4" (146mm)	+/- 1" (25mm)
<b>6FS-2</b>	2" (51mm)	2 7/8" (73mm)	7 3/4" (197mm)	+/- 2" (51mm)
<b>6FS-3</b>	3" (76mm)	4 1/8" (105mm)	11 5/16" (287mm)	+/- 3" (76mm)
<b>6FS-4</b>	4" (102mm)	5 1/16" (129mm)	14 1/8" (359mm)	+/- 4" (102mm)
<b>6FS-3-6</b>	6" (152mm)	4 1/8" (105mm)	14 5/16" (364mm)	+/- 3" (76mm)
<b>6FS-4-8</b>	8" (203mm)	5 1/16" (129mm)	18 1/8" (460mm)	+/- 4" (102mm)
<b>6FVS-1</b>	1" (25mm)	1 7/8" (48mm)	2 7/8" (73mm)	+/- 1/2" (13mm)
<b>6FVS-1-2</b>	2" (51mm)	1 7/8" (48mm)	3 7/8" (98mm)	+/- 1/2" (13mm)
<b>6FVS-2</b>	2" (51mm)	2 7/8" (73mm)	4 7/8" (124mm)	+/- 1" (25mm)
<b>6FVS-3</b>	3" (76mm)	4 1/8" (105mm)	7 1/8" (181mm)	+/- 1 1/2" (38mm)
<b>6FVS-4</b>	4" (102mm)	5 1/16" (129mm)	9 1/16" (230mm)	+/- 2" (51mm)
<b>6FVS-3-6</b>	6" (152mm)	4 1/8" (105mm)	10 1/8" (257mm)	+/- 1 1/2" (38mm)
<b>6FVS-4-8</b>	8" (203mm)	5 1/16" (129mm)	13 1/16" (332mm)	+/- 2" (51mm)
<b>B6FS-1/SS6FS-1</b>	1" (25mm)	2 1/8" (54mm)	5 1/4" (133mm)	+/- 1" (25mm)
<b>B6FS-1-2/SS6FS-1-2</b>	2" (51mm)	2 1/8" (54mm)	6 1/4" (159mm)	+/- 1" (25mm)
<b>B6FS-2/SS6FS-2</b>	2" (51mm)	3 1/8" (79mm)	8 1/4" (210mm)	+/- 2" (51mm)
<b>B6FVS-1/SS6FS-1</b>	1" (25mm)	2 1/8" (54mm)	3 1/8" (79mm)	+/- 1/2" (13mm)
<b>B6FVS-1-2/SS6FVS-1-2</b>	2" (51mm)	2 1/8" (54mm)	4 1/8" (105mm)	+/- 1/2" (13mm)
<b>B6FVS-2/SS6FVS-2</b>	2" (51mm)	3 1/8" (79mm)	5 1/8" (130mm)	+/- 1" (25mm)

Contact Factory for Larger Joint Sizes

\*Wider Joint Sizes May Increase Block-Out Dimension

## NEW TO EXISTING

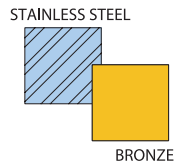
### 6FVS-E - FLOOR TO FLOOR



#### OPTIONAL COVER PLATE MATERIALS

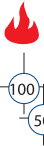
6000 Series Floor Covers are Also Available with Stainless Steel and Architectural Bronze Cover Plates.

(Base Members are Aluminum Extrusions)



#### FEATURES

- Sliding Aluminum Center Plate - Standard Mill Finish (See Optional Cover Plates)
- Aluminum Cover Plate - Standard Mill Finish (See Optional Cover Plates)
- Extruded Aluminum Sub-Channel (6063-TS) - Standard Mill Finish
- Cast-In Anchors - Standard (Blockout Anchors - Optional)



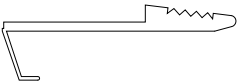
Available as 2 Hour Rated System - Balco Fire Barrier Systems are Tested in Accordance with ASTM E 1966 and are Listed with Omega Point Laboratories, Inc. (Contact Balco for Additional Fire Ratings)

Movement Capabilities - 100% and 50%

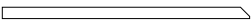
#### OPTIONAL COVER PLATES

In Addition to Serrated and Tile Recess Cover Plates, 6000 Series Floor Covers are Available with a Recess for Carpet, an Abrasive Epoxy Fill, or a Plain Plate.

#### 6FC



#### 6FP

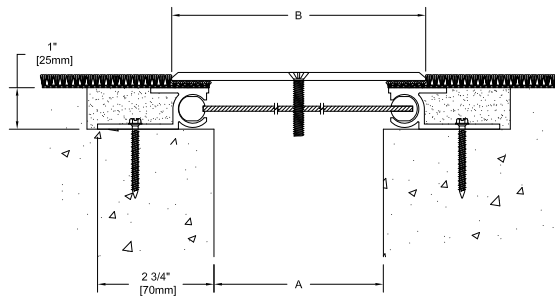
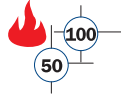


#### 6FA

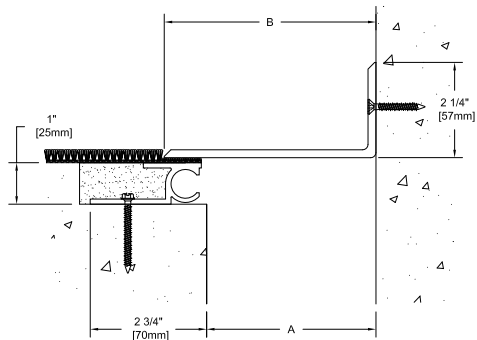


# ALL-ALUMINUM FLOOR COVERS

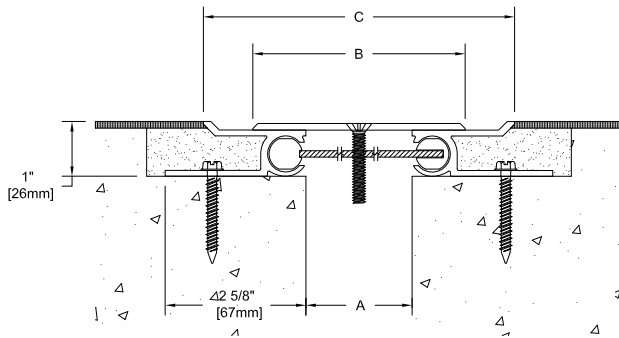
**RDA**



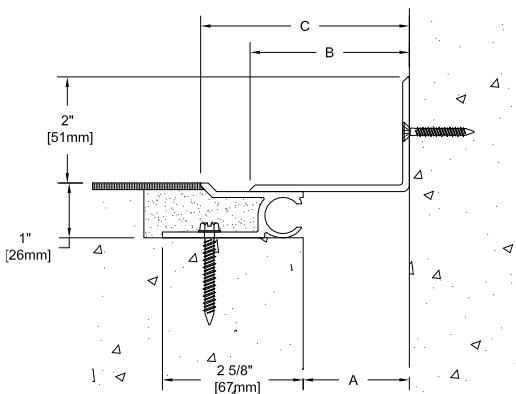
**RDAL**



**DA**



**DLA**



## Standard Flexible Floor Series

Type	A	B	Type	A	B
<b>RDA-1</b>	1" (25mm)	2 1/2" (64mm)	<b>RDAL-1</b>	1" (25mm)	1 3/4" (44mm)
<b>RDA-2</b>	2" (51mm)	4" (102mm)	<b>RDAL-2</b>	2" (51mm)	3" (76mm)
<b>RDA-3</b>	3" (76mm)	5" (127mm)	<b>RDAL-3</b>	3" (76mm)	4" (102mm)
<b>RDA-4</b>	4" (102mm)	6" (152mm)	<b>RDAL-4</b>	4" (102mm)	5" (127mm)
<b>RDA-6</b>	6" (152mm)	9" (229mm)	<b>RDAL-6</b>	6" (152mm)	7 1/2" (191mm)

50% Movement Shown - 100% Also Available

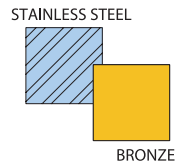
Type	A	B	C	D
<b>DA-2</b>	2" (51mm)	2 5/8" (67mm)	4" (102mm)	5 7/8" (149mm)
<b>DA-3</b>	3" (76mm)	2 5/8" (67mm)	5" (127mm)	6 7/8" (175mm)
<b>DA-4</b>	4" (102mm)	2 5/8" (67mm)	6" (152mm)	7 7/8" (200mm)
<b>DA-6</b>	6" (152mm)	2 5/8" (67mm)	9" (229mm)	9 7/8" (251mm)
<b>DLA-2</b>	2" (51mm)	2 5/8" (67mm)	3" (76mm)	3 15/16" (100mm)
<b>DLA-3</b>	3" (76mm)	2 5/8" (67mm)	4" (102mm)	4 15/16" (125mm)
<b>DLA-4</b>	4" (102mm)	2 5/8" (67mm)	5" (127mm)	5 15/16" (151mm)
<b>DLA-6</b>	6" (152mm)	2 5/8" (67mm)	7 1/2" (191mm)	7 15/16" (202mm)

50% Movement Shown - 100% not Available

## OPTIONAL COVER PLATE MATERIALS

RDA/RDAL Series Floor Covers are Also Available with Stainless Steel and Architectural Bronze Cover Plates. (Base Members are Aluminum Extrusions)  
Specify RDS/RDSL for Stainless Steel, RDB/RDBL for Bronze.

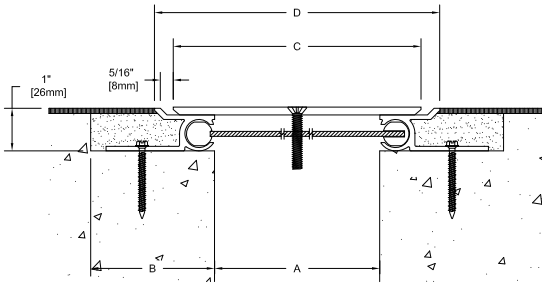
DA/DLA Series Floor Covers are Also Available with Stainless Steel Cover Plates. Specify DS/DLS for Stainless Steel. (Base members are Aluminum extrusion)



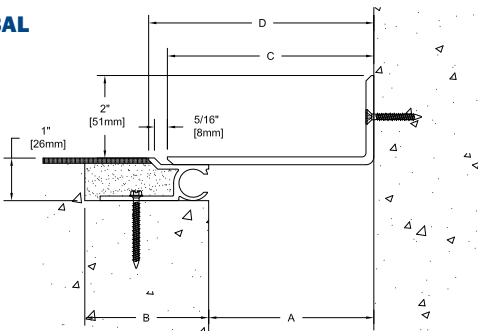
# NO-BUMP FLOOR COVERS



## NBA



## NBAL



### OPTIONAL COVER PLATE MATERIALS

NBA/NBAL Series Floor Covers are Also Available with Stainless Steel Cover Plates. (Base Members are Aluminum Extrusions) Specify NBS/NBSL for Stainless Steel.



## No-Bump Floor Series

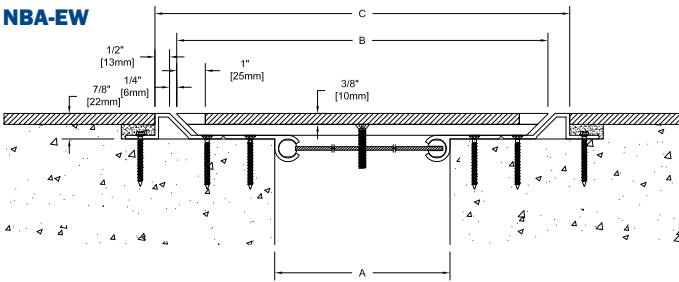
Type	A	B	C	D
<b>NBA-1</b>	1" (25mm)	2 5/8" (67mm)	3" (76mm)	3 15/16" (100mm)
<b>NBA-2</b>	2" (51mm)	2 5/8" (67mm)	4" (102mm)	4 15/16" (125mm)
<b>NBA-3</b>	3" (76mm)	2 5/8" (67mm)	5" (127mm)	5 15/16" (151mm)
<b>NBA-4</b>	4" (102mm)	2 5/8" (67mm)	6" (152mm)	6 15/16" (176mm)
<b>NBA-6</b>	6" (152mm)	2 5/8" (67mm)	9" (229mm)	9 7/8" (251mm)
<b>NBAL-1</b>	1" (25mm)	2 5/8" (67mm)	2" (51mm)	2 7/16" (62mm)
<b>NBAL-2</b>	2" (51mm)	2 5/8" (67mm)	3" (76mm)	3 7/16" (87mm)
<b>NBAL-3</b>	3" (76mm)	2 5/8" (67mm)	4" (102mm)	4 7/16" (113mm)
<b>NBAL-4</b>	4" (102mm)	2 5/8" (67mm)	5" (127mm)	5 7/16" (138mm)
<b>NBAL-6</b>	6" (152mm)	2 5/8" (67mm)	7 1/2" (191mm)	7 15/16" (202mm)

50% Movement Shown - 100% not Available

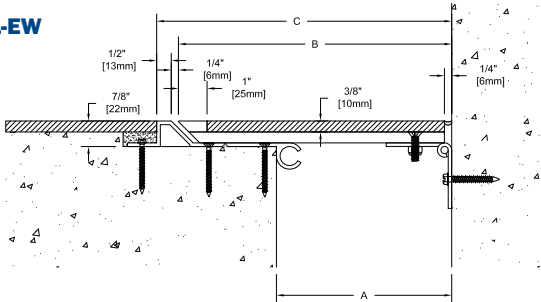
Type	A	B	C
<b>NBA/NBT-4-EW</b>	4" (102mm)	5 1/8" (131mm)	12 3/16" (310mm)
<b>NBA/NBT-6-EW</b>	6" (152mm)	5 5/8" (143mm)	15 13/16" (386mm)
<b>NBA/NBT-8-EW</b>	8" (203mm)	6 5/8" (168mm)	19 3/16" (488mm)
<b>NBAL/NBTL-4-EW</b>	4" (102mm)	5 1/8" (131mm)	8 1/8" (206mm)
<b>NBAL/NBTL-6-EW</b>	6" (152mm)	5 5/8" (143mm)	10 5/8" (269mm)
<b>NBAL/NBTL-8-EW</b>	8" (203mm)	6 5/8" (168mm)	13 5/8" (345mm)

100% Movement - 50% Available

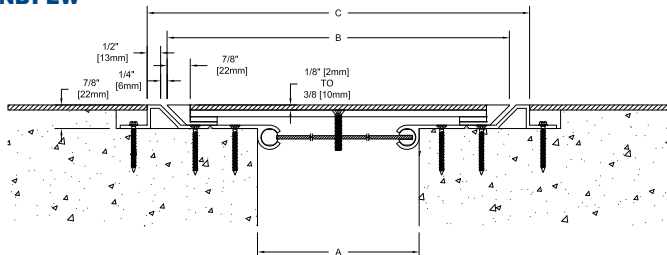
## NBA-EW



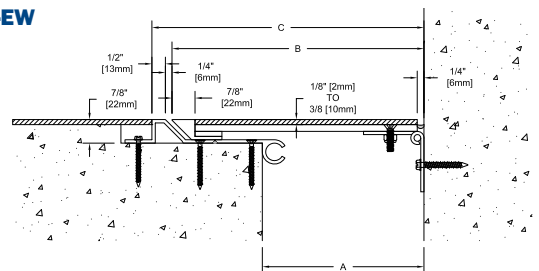
## NBAL-EW



## NBT-EW



## NBTL-EW

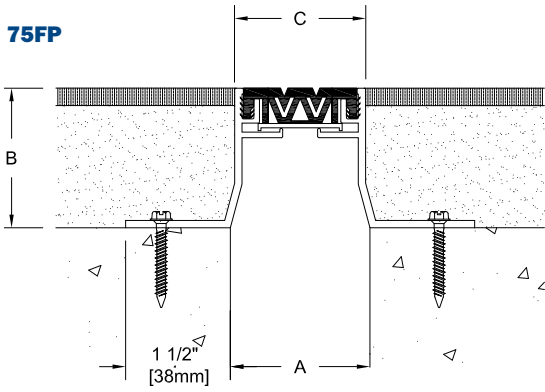




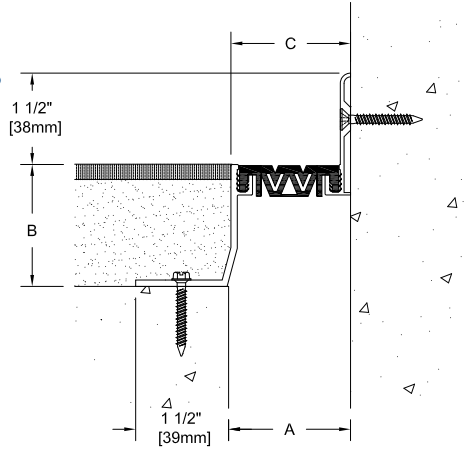
# 7500 ELASTOMERIC FLOOR COVERS



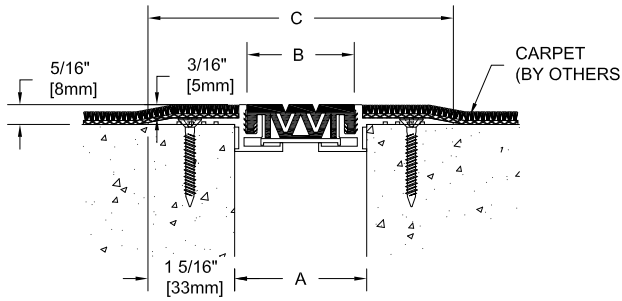
**75FP**



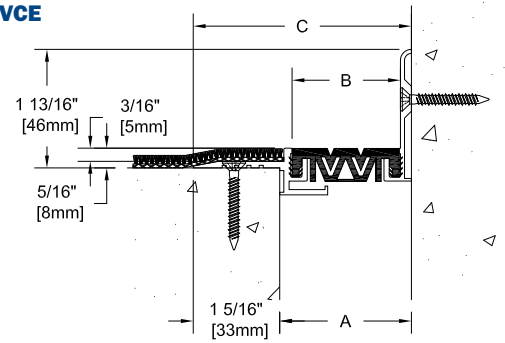
**75FVP**



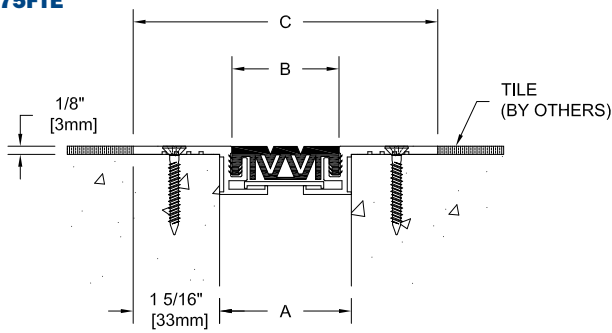
**75FCE**



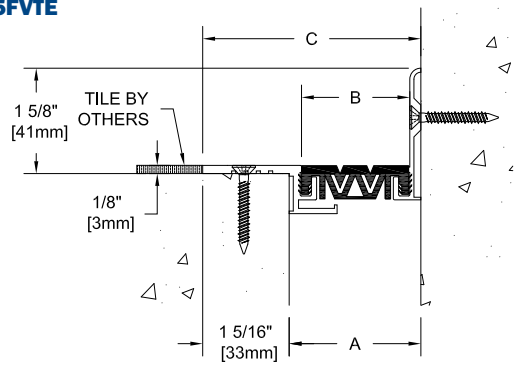
**75FVCE**



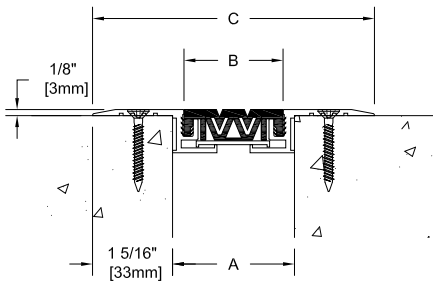
**75FTE**



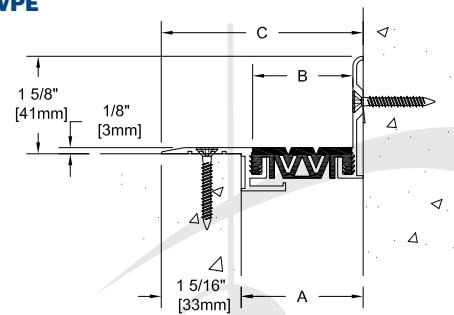
**75FVTE**



**75FPE**



**75FVPE**



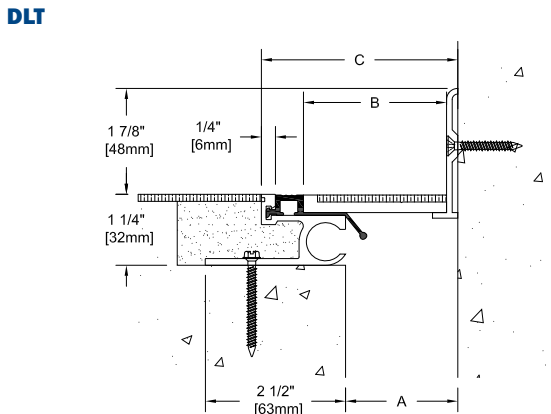
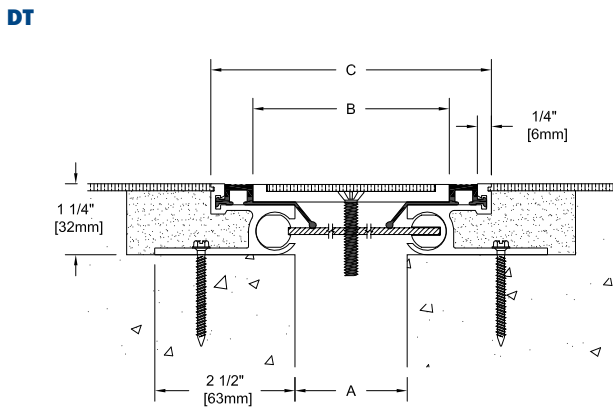
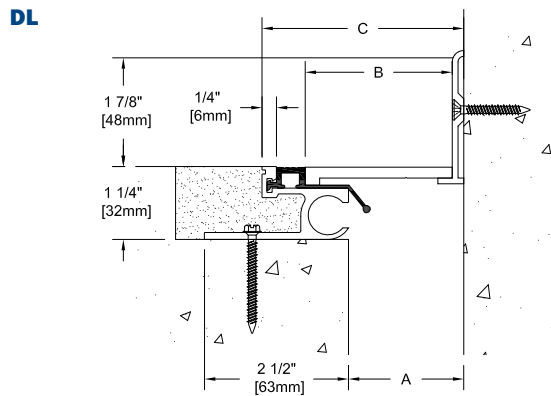
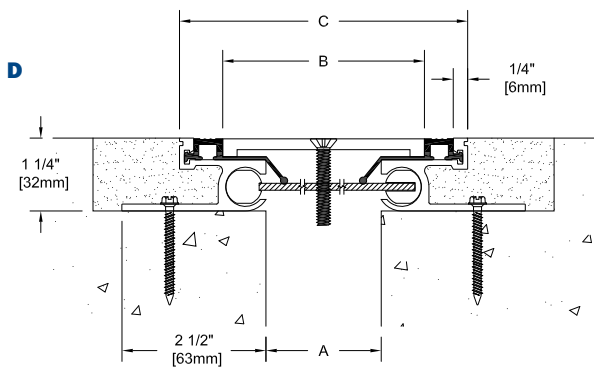
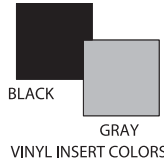


# ELASTOMERIC FLOOR COVERS



## SURFACE OPTIONS

In Addition to Plain, 7500 Series Floor Covers are also Available with a Carpet Recess or an Adaptation for 1/8" (3mm) Tile.



## Elastomeric Floor Series

Type	A	B	C
75FP-1X1	1" (25mm)	1" (25mm)	1 1/16" (27mm)
75FP-1X1 1/2	1" (25mm)	1 1/2" (38mm)	1 1/16" (27mm)
75FP-1X2	1" (25mm)	2" (51mm)	1 1/16" (27mm)
75FP-2X1	2" (51mm)	1" (25mm)	1 7/8" (48mm)
75FP-2X1 1/2	2" (51mm)	1 1/2" (38mm)	1 7/8" (48mm)
75FP-2X2	2" (51mm)	2" (51mm)	1 7/8" (48mm)
75FVP-1X1	1" (25mm)	1" (25mm)	1" (25mm)
75FVP-1X1 1/2	1" (25mm)	1 1/2" (38mm)	1 1/16" (27mm)
75FVP-1X2	1" (25mm)	2" (51mm)	1 1/16" (27mm)
75FVP-2X1	2" (51mm)	1" (25mm)	1 15/16" (49mm)
75FVP-2X1 1/2	2" (51mm)	1 1/2" (38mm)	1 15/16" (49mm)
75FVP-2X2	2" (51mm)	2" (51mm)	1 15/16" (49mm)

Type	A	B	C
75FPE-1	1" (25mm)	13/16" (21mm)	3 13/16" (97mm)
75FPE-2	2" (51mm)	1 5/8" (41mm)	4 5/8" (117mm)
75FVPE-1	1" (25mm)	13/16" (21mm)	2 3/8" (60mm)
75FVPE-2	2" (51mm)	1 5/8" (41mm)	3 5/16" (84mm)
75FTE-1	1" (25mm)	13/16" (21mm)	3 13/16" (97mm)
75FTE-2	2" (51mm)	1 5/8" (41mm)	4 5/8" (117mm)
75FVTE-1	1" (25mm)	13/16" (21mm)	2 3/8" (60mm)
75FVTE-2	2" (51mm)	1" (25mm)	3 5/16" (84mm)
75FCE-1	1" (25mm)	13/16" (21mm)	3 5/8" (92mm)
75FCE-2	2" (51mm)	1 5/8" (41mm)	4 5/8" (117mm)
75FVCE-1	1" (25mm)	13/16" (21mm)	2 5/16" (59mm)
75FVCE-2	2" (51mm)	1" (25mm)	3 5/16" (84mm)

7500 Series Available in 1" (25mm) and 2" (51mm) Joint Sizes Only

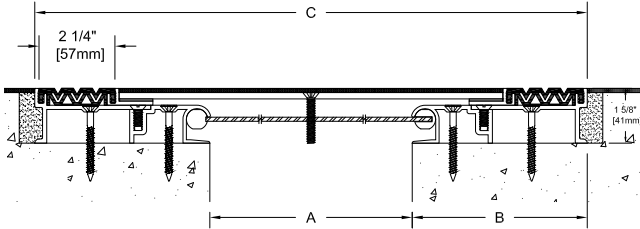
Type	A	B	C
D-1/DT-1	1" (25mm)	2 1/2" (64mm)	4" (102mm)
D-2/DT-2	2" (51mm)	3 1/2" (89mm)	5" (127mm)
D-4/DT-4	4" (102mm)	6" (152mm)	8 1/2" (216mm)
DL-1/DLT-1	1" (25mm)	1 3/4" (44mm)	2 1/2" (63mm)
DL-2/DLT-2	2" (51mm)	2 3/4" (70mm)	3 1/2" (89mm)
DL-4/DLT-4	4" (102mm)	5" (127mm)	6 1/4" (159mm)

## 9500 DUAL ELASTOMERIC FLOOR COVERS

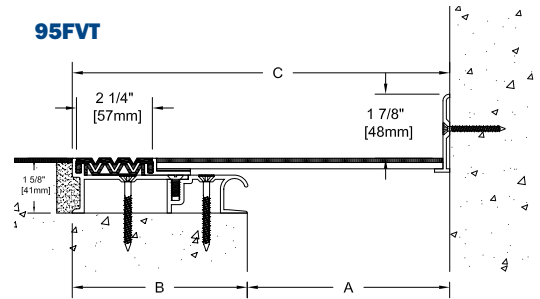
9500 Series Floor Covers are Available with 1/8" (3mm) Tile Recess and Plain Cover Plates; Specify 95FT/FVT/GFT/GFVT for Tile Recess or 95FP/FVP/GFP/GFVP for Plain Cover Plate.



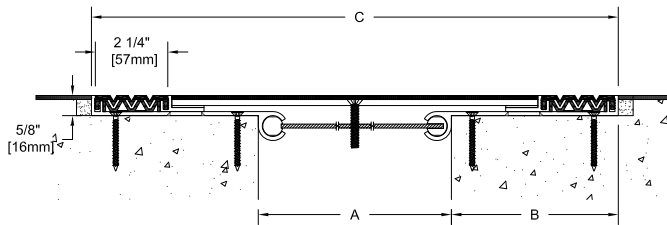
### 95FT



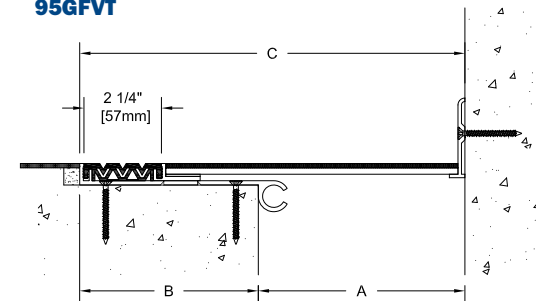
### 95FVT



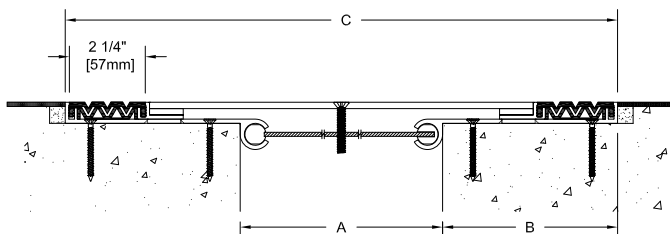
### 95GFT



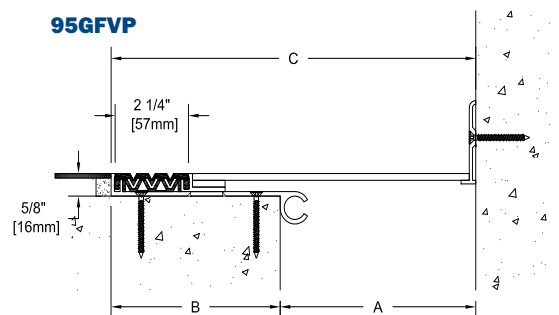
### 95GFVT



### 95GFP



### 95GFVP



### Dual Elastomeric Floor Covers

Type	A	B	C
95FT/95FP/95GFP/95GFT-2	2" (51mm)	3 11/16" (93mm)	9 3/8" (238mm)
95FT/95FP/95GFP/95GFT-3	3" (76mm)	3 11/16" (93mm)	10 3/8" (264mm)
95FT/95FP/95GFP/95GFT-4	4" (102mm)	4 3/16" (106mm)	1'-0 3/8" (314mm)
95FT/95FP/95GFP/95GFT-6	6" (152mm)	5 3/16" (132mm)	1'-4 3/8" (416mm)
95FVT/95FVP/95GFVP/95GFVT-2	2" (51mm)	3 11/16" (93mm)	5 11/16" (144mm)
95FVT/95FVP/95GFVP/95GFVT-3	3" (76mm)	3 11/16" (93mm)	6 11/16" (169mm)
95FVT/95FVP/95GFVP/95GFVT-4	4" (102mm)	4 3/16" (106mm)	8 3/16" (208mm)
95FVT/95FVP/95GFVP/95GFVT-6	6" (152mm)	5 3/16" (132mm)	11 3/16" (284mm)

\*Large sizes available - Contact factory

### FEATURES

- Aluminum Center Plate with Centering Bar Standard Mill Finish (Floor Finish By Others)
- Extruded Aluminum Sub-Channel (6063-TS) Standard Mill Finish
- Santoprene Insert
- Floor Construction - By Others

Available as 2 Hour Rated System - Balco Fire Barrier Systems are Tested in Accordance with ASTM E 1966 and are Listed with Omega Point Laboratories, Inc. Contact Balco for Additional Fire Ratings)

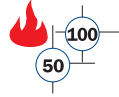


Movement Capabilities - 100% and 50%

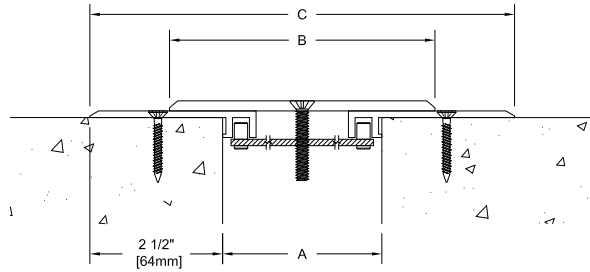


{DOWNLOAD CADs AND PDFs}  
[www.balcousa.com](http://www.balcousa.com)

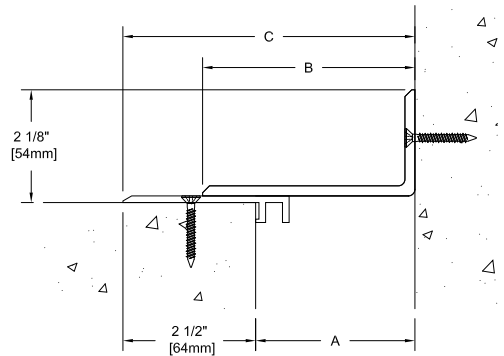
# SURFACE MOUNTED FLOOR COVERS



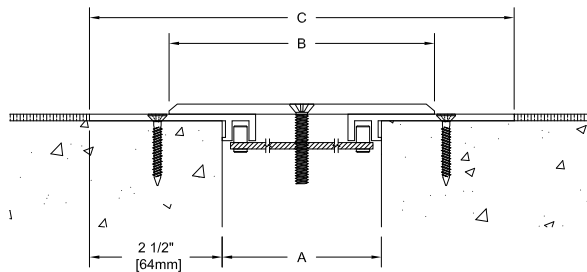
**EXB**



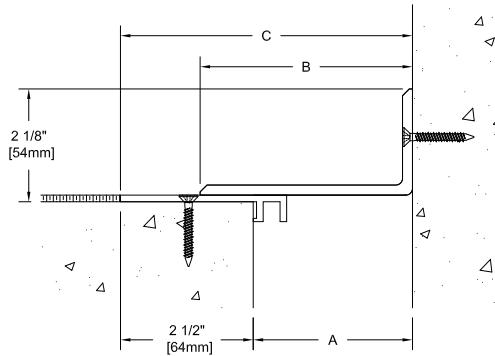
**EXBL**



**EX**



**EXL**



## Existing to Existing/New to Existing

Type	A	B	C
<b>EX/EXB-2</b>	2" (51mm)	4" (102mm)	7" (178mm)
<b>EX/EXB-3</b>	3" (76mm)	5" (127mm)	8" (203mm)
<b>EX/EXB-4</b>	4" (102mm)	6" (152mm)	9" (229mm)
<b>EX/EXB-6</b>	6" (152mm)	8" (203mm)	11" (279mm)
<b>EXL/EXBL-2</b>	2" (51mm)	3" (76mm)	4 1/2" (114mm)
<b>EXL/EXBL-3</b>	3" (76mm)	4" (102mm)	5 1/2" (140mm)
<b>EXL/EXBL-4</b>	4" (102mm)	5" (127mm)	6 1/2" (165mm)
<b>EXL/EXBL-6</b>	6" (152mm)	7" (178mm)	8 1/2" (216mm)

## Heavy Duty Hinge Plate

Type	A	B
<b>BHS-2</b>	2" (51mm)	8 1/8"
<b>BHS-4</b>	4" (102mm)	11 3/8"
<b>BHS-6</b>	6" (152mm)	14 5/8"
<b>BHSL-2</b>	2" (51mm)	3 15/16" (100mm)
<b>BHSL-4</b>	4" (102mm)	7 3/16" (182mm)
<b>BHSL-6</b>	6" (152mm)	10 7/16" (256mm)
<b>BCP-2-250</b>	2"	7"

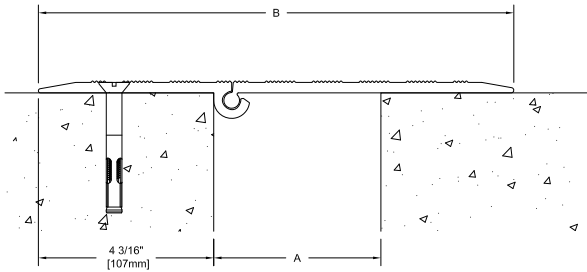
50% Movement

## Sight Line Series

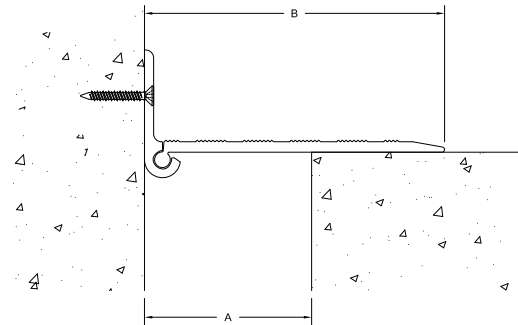
Type	A
<b>CR/CRL-2</b>	2 1/2" (64mm)
<b>CR/CRL-3</b>	3 1/4" (83mm)

Available for 2" & 3" joint sizes only.

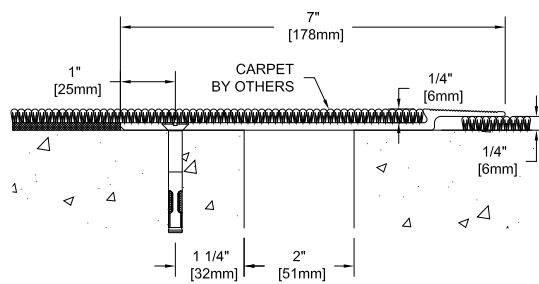
**BHS**



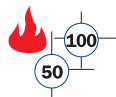
**BHSL**



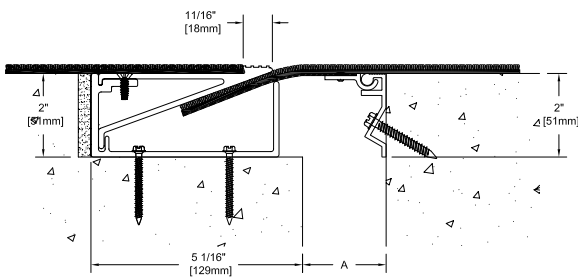
**BCP-2-250**



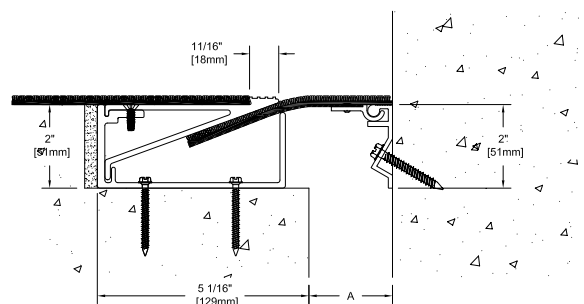
**MINIMAL SIGHT LINE COVERS**



**CR**



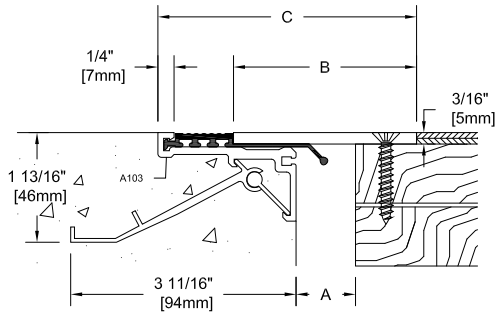
**CRL**



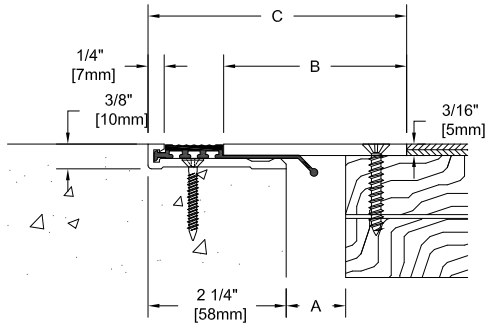
# GYMNASIUM FLOOR COVERS

Interior Applications Only

## 1100/1400



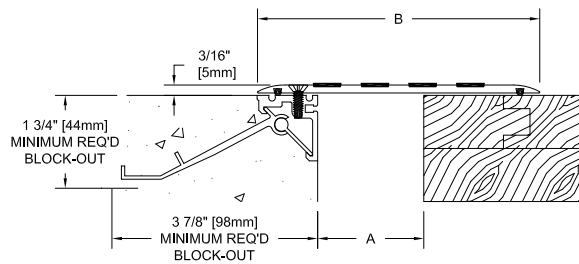
## 1120/1420



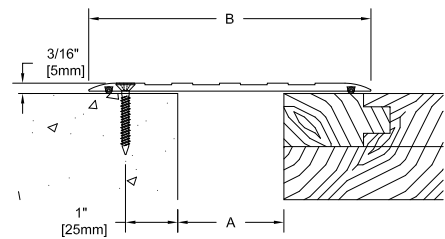
### OPTIONAL COVER PLATES

GF and GFE Series Floor Covers are Available with a Serrated Plate, an Abrasive Striped Plate or a Plain Plate; Specify S for Serrated, D for Abrasive or P for Plain.

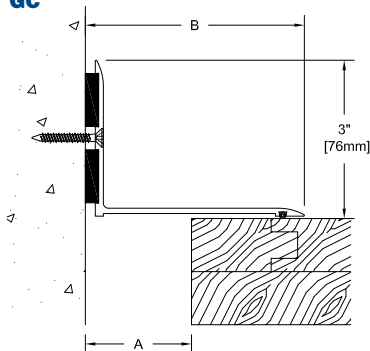
#### GFE-1D



#### GF-1S



#### GC



### Gymnasium Floor Series

Type	A	B	C
<b>1100</b>	1" (25mm)	3" (76mm)	4 1/4" (108mm)
<b>1400</b>	2" (51mm)	4" (102mm)	5 1/4" (133mm)
<b>1120</b>	1" (25mm)	3" (76mm)	4 1/4" (108mm)
<b>1420</b>	2" (51mm)	4" (102mm)	5 1/4" (133mm)

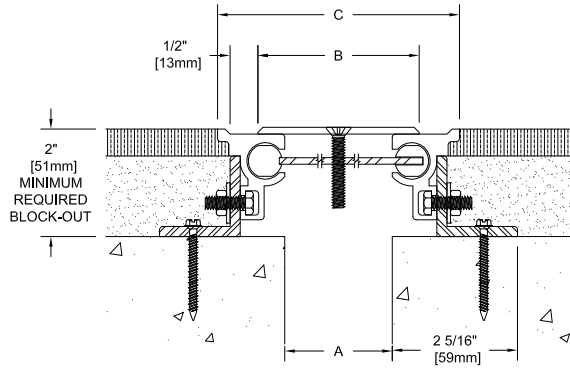
### Gymnasium Floor Series

Type	A	B	C
<b>GFE-1S/GFE-1D/GFE-1P</b>	1" (25mm)	4 3/8" (111mm)	n/a
<b>GFE-2S/GFE-2D/GFE-2P</b>	2" (51mm)	5 3/8" (137mm)	n/a
<b>GC-1</b>	1" (25mm)	3 1/8" (79mm)	n/a
<b>GC-2</b>	2" (51mm)	4 1/8" (105mm)	n/a
<b>GF-1S/GF-1D/GF-1P</b>	1" (25mm)	4 3/8" (111mm)	n/a
<b>GF-2S/GF-2D/GF-2P</b>	2" (51mm)	5 3/8" (137mm)	n/a

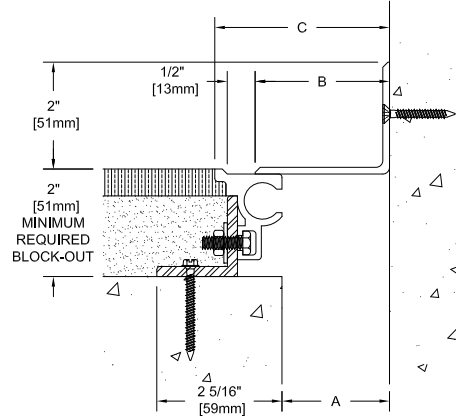
# TOPPING SLAB FLOOR COVERS



## SAA

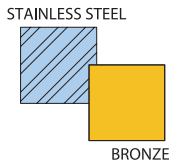


## SLA



### OPTIONAL COVER PLATE MATERIALS

SAA/SLA Series Floor Covers are Also Available with Stainless Steel and Architectural Bronze Cover Plates. (Base Members are Aluminum Extrusions)  
Specify SAS/SLS for Stainless Steel, SAB/SLB for Bronze.

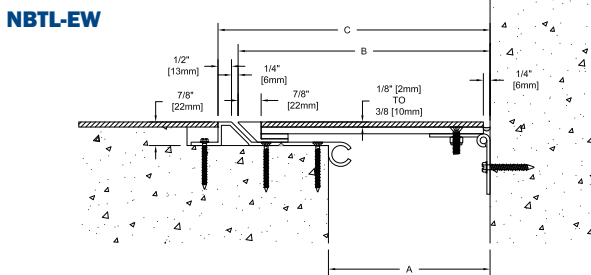
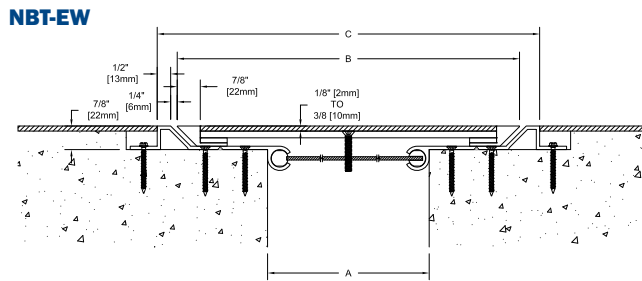
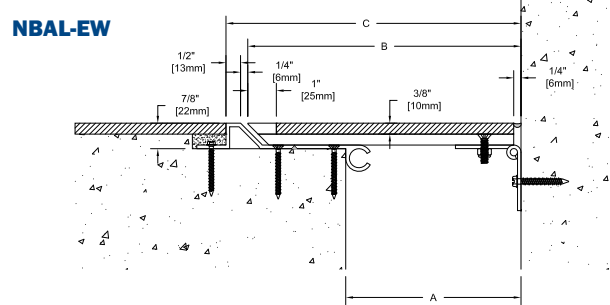
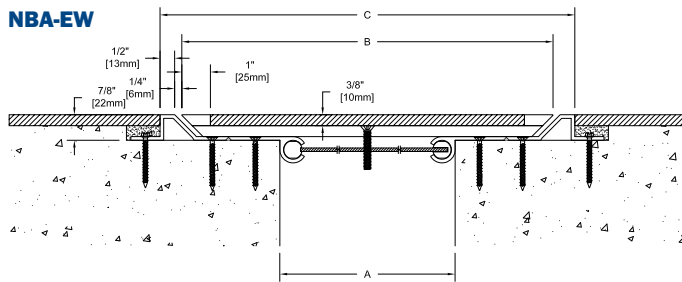
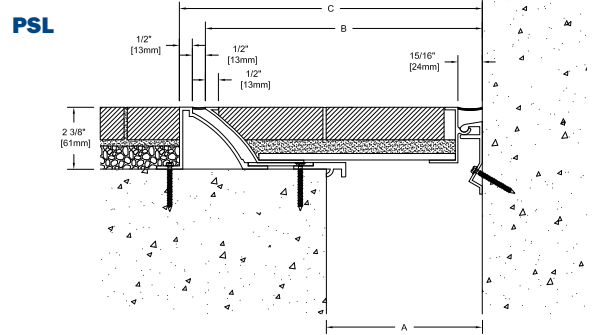
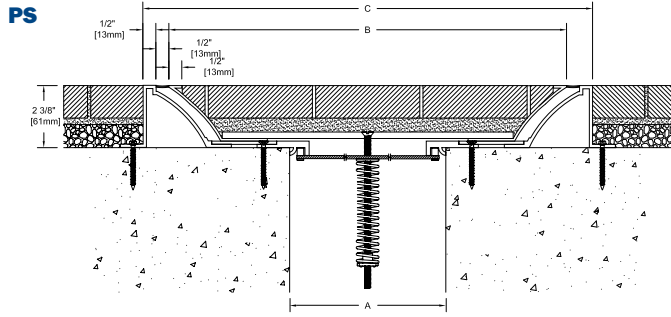
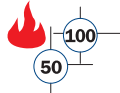


### Topping Slab Floor Series

Type	A	B	C
<b>SAA-1</b>	1" (25mm)	2 1/2" (64mm)	3 1/2" (89mm)
<b>SAA-2</b>	2" (51mm)	3" (76mm)	4 1/2" (114mm)
<b>SAA-3</b>	3" (76mm)	5" (127mm)	7 11/16" (195mm)
<b>SLA-1</b>	1" (25mm)	1 3/4" (44mm)	2 1/4" (57mm)
<b>SLA-2</b>	2" (51mm)	2 1/2" (64mm)	3 1/4" (83mm)
<b>SLA-3</b>	3" (76mm)	4" (102mm)	5 5/16" (135mm)

50% Movement Shown - 100% not Available

# SEISMIC FLOOR COVERS



## Seismic Floor Series

Type	A	B	C
PS-4	4" (102mm)	Note: B and C Dimensions are subject to change, due to movement requirements.	
PS-6	6" (152mm)		
PS-8	8" (203mm)		
PSL-4	4" (102mm)		
PSL-6	6" (152mm)	Contact Factory for Details.	
PSL-8	8" (203mm)		

Type	A	B	C
NBA/NBT-4-EW	4" (102mm)	5 1/8" (131mm)	12 3/16" (310mm)
NBA/NBT-6-EW	6" (152mm)	5 5/8" (143mm)	15 13/16" (386mm)
NBA/NBT-8-EW	8" (203mm)	6 5/8" (168mm)	19 3/16" (488mm)
NBAL/NBTL-4-EW	4" (102mm)	5 1/8" (131mm)	8 1/8" (206mm)
NBAL/NBTL-6-EW	6" (152mm)	5 5/8" (143mm)	10 5/8" (269mm)
NBAL/NBTL-8-EW	8" (203mm)	6 5/8" (168mm)	13 5/8" (345mm)

100% Movement - 50% Available

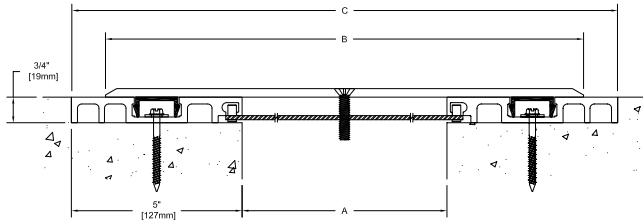


# EXTRA WIDE FLOOR COVERS

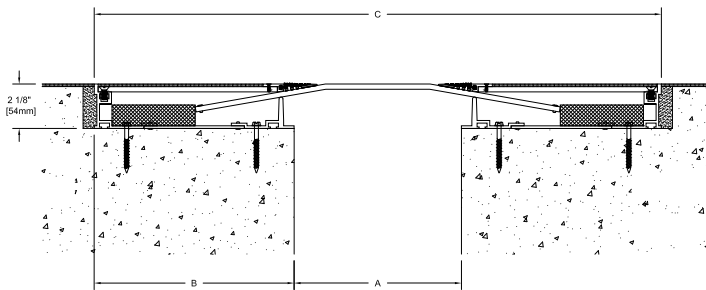


## HDEW – EXTRA WIDE BLOCKOUT

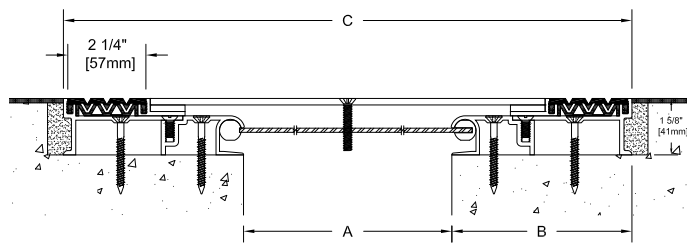
Floor to Wall System Also Available.  
Specify HDEWL.



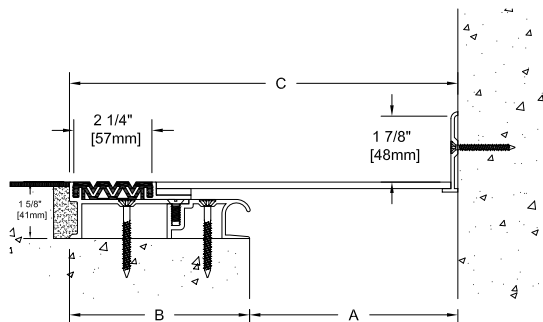
## 6FTP WIDE



## 9FP



## 9FVP



### Extra Wide Floor Series

Type	A	B	C
<b>HDEW-4</b>	4" (102mm)	12" (305mm)	14" (356mm)
<b>HDEW-6</b>	6" (152mm)	14" (356mm)	16" (406mm)
<b>HDEW-8</b>	8" (203mm)	16" (406mm)	18" (457mm)
<b>HDEW-10</b>	10" (254mm)	18" (457mm)	20" (508mm)

100% Movement For Smaller Joints  
50% Movement for Larger Joints

Type	A	B	C
<b>6FP/6FTP-6</b>	6" (152mm)	7 9/16" (192mm)	21 1/8" (537mm)
<b>6FP/6FTP-8</b>	8" (203mm)	9 9/16" (243mm)	27 1/8" (689mm)
<b>6FP/6FTP-10</b>	10" (254mm)	11 9/16" (294mm)	33 1/8" (841mm)
<b>6FP/6FTP-12</b>	12" (305mm)	3 9/16" (344mm)	39 1/8" (994mm)

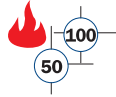
Type	A	B	C
<b>9FP-4</b>	4" (102mm)	6 7/8" (175mm)	15" (381mm)
<b>9FP-6</b>	6" (152mm)	8 7/8" (225mm)	21" (533mm)
<b>9FP-8</b>	8" (203mm)	10 7/8" (276mm)	27" (686mm)
<b>9FP-10</b>	10" (254mm)	12 7/8" (327mm)	33" (838 mm)
<b>9FVP-4</b>	4" (102mm)	6 7/8" (175mm)	9 1/2" (241mm)
<b>9FVP-6</b>	6" (152mm)	8 7/8" (225mm)	13 1/2" (343mm)
<b>9FVP-8</b>	8" (203mm)	10 7/8" (276mm)	17 1/2" (445mm)
<b>9FVP-10</b>	10" (254mm)	12 7/8" (327mm)	21 1/2" (546 mm)

100% Movement Shown - 50% Available  
For joint covers larger than 14", contact Factory for information.

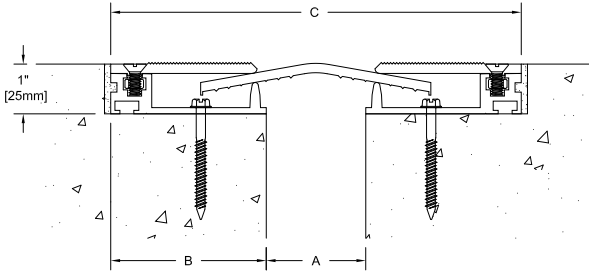
# EXTRA-HEAVY DUTY FLOOR COVERS

## New to Existing

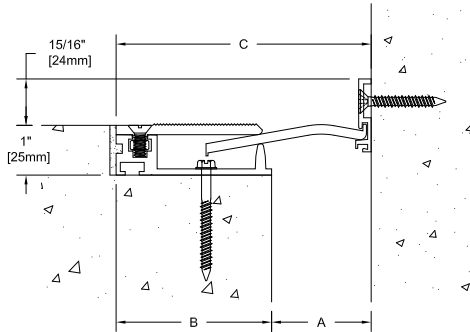
This Heavy Duty System is Available with a Serrated Cover Plate or Plain Cover Plate;  
Specify XH4FS/XH4FVS for Serrated or XH4FP/XH4FVP for Plain.



### XH4FS



### XH4FVS



### FEATURES

- Sliding Aluminum Center Plate with Aluminum Side Cover Plate - Standard Mill Finish
- Extruded Aluminum Sub-Channel (6063-TS) Standard Mill Finish
- Floor Construction - By Others

Available as 2 Hour Rated System - Balco Fire Barrier Systems are Tested in Accordance with ASTM E 1966 and are Listed with Omega Point Laboratories, Inc. (Contact Balco for Additional Fire Ratings)

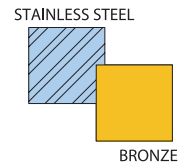


Movement Capabilities - 100% and 50%

### OPTIONAL COVER PLATE MATERIALS

XH4FS/XH4FP/XH4FVS/XH4FVP Series Floor Cover are Also Available with Stainless Steel and Architectural Bronze Cover Plates.

(Base Members are Aluminum Extrusions)  
Specify SSXH4FS/SSXH4FP/SSXH4FVS/SSXH4FVP for Stainless Steel, BXH4FS/BXH4FP/BXH4FVS/BXH4FVP for Bronze.



### Extra-Heavy Duty Series

Type	A	B	C	Movement	Max. Concentrated Load for Joint in Neutral Position
<b>XH4FS-1</b>	1" (25mm)	2 1/8" (54mm)	5 1/4" (133mm)	+/- 1" (25mm)	1900 lbs. 8.45 kN
<b>XH4FS-1-2</b>	2" (51mm)	2 1/8" (54mm)	6 1/4" (159mm)	+/- 1" (25mm)	1360 lbs. 6.05 kN
<b>XH4FS-2</b>	2" (51mm)	3 1/8" (79mm)	8 1/4" (210mm)	+/- 2" (51mm)	1540 lbs. 6.85 kN
<b>XH4FS-3</b>	3" (76mm)	4 9/16" (116mm)	1'-0 3/16" (310mm)	+/- 3" (76mm)	1500 lbs. 6.67 kN
<b>XH4FS-4</b>	4" (102mm)	5 9/16" (141mm)	1'-3 3/16" (386mm)	+/- 4" (102mm)	1500 lbs. 6.67 kN
<b>XH4FVS-1</b>	1" (25mm)	2 1/8" (54mm)	3 1/8" (79mm)	+/- 1/2" (13mm)	1900 lbs. 8.45 kN
<b>XH4FVS-1-2</b>	2" (51mm)	2 1/8" (54mm)	4 1/8" (105mm)	+/- 1/2" (13mm)	1360 lbs. 6.05 kN
<b>XH4FVS-2</b>	2" (51mm)	3 1/8" (79mm)	5 1/8" (130mm)	+/- 1" (25mm)	1540 lbs. 6.85 kN
<b>XH4FVS-3</b>	3" (76mm)	4 9/16" (116mm)	1'-0 3/16" (310mm)	+/- 1 1/2" (38mm)	1500 lbs. 6.67 kN
<b>XH4FVS-4</b>	4" (102mm)	5 9/16" (141mm)	1'-3 3/16" (386mm)	+/- 2" (51mm)	1500 lbs. 6.67 kN

Notes:

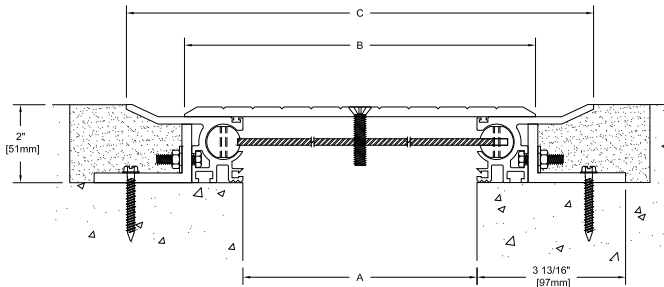
1. Loads are based on 6063-T5 aluminum.
2. Concentrated load is applied to a 2" (51mm) diameter circle.
3. 1 kN = 1000 newtons

# EXTRA-HEAVY DUTY FLOOR COVERS

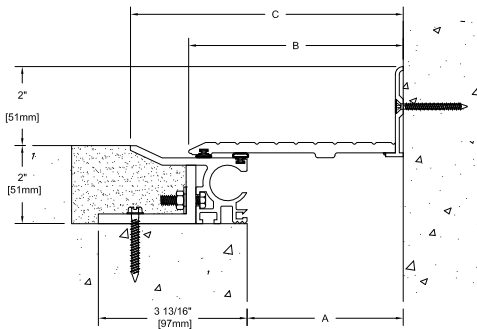


## HDN - FOR TOPPING SLAB

Floor to Wall System  
Also Available. Specify HDL.

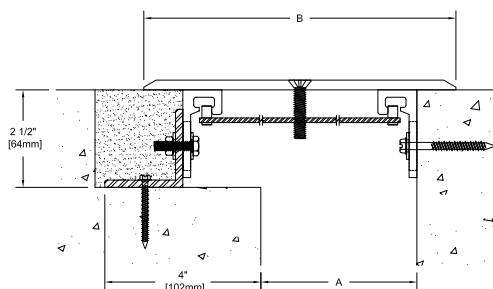


## HDNL



## HDNE - HEAVY DUTY FLOOR TO FLOOR

Also Available Floor to Wall. Specify HDNEL.



## HDN Heavy Duty Floor Series

Type	A	B	C
<b>HDN-2</b>	2" (51mm)	5" (127mm)	8" (203mm)
<b>HDN-3</b>	3" (76mm)	6" (152mm)	9" (229mm)
<b>HDN-4</b>	4" (102mm)	7" (178mm)	10" (254mm)

50% Movement Shown - 100% Not Available

Type	A	B	C
<b>HDNL-2</b>	2" (51mm)	3 1/2" (89mm)	5" (127mm)
<b>HDNL-3</b>	3" (76mm)	4 1/2" (114mm)	6" (152mm)
<b>HDNL-4</b>	4" (102mm)	5 1/2" (458mm)	7" (178mm)

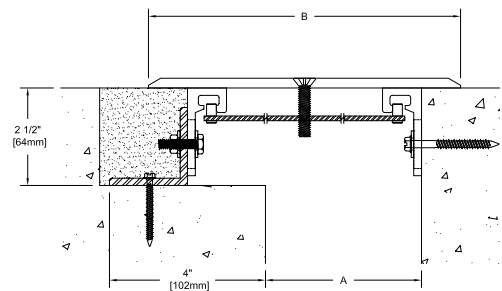
50% Movement Shown - 100% Not Available

Type	A	B	C
<b>HDNE-2</b>	2" (51mm)	6" (152mm)	n/a
<b>HDNE-3</b>	3" (76mm)	7" (178mm)	n/a
<b>HDNE-4</b>	4" (102mm)	8" (203mm)	n/a

100% Movement Shown - 50% Also Available

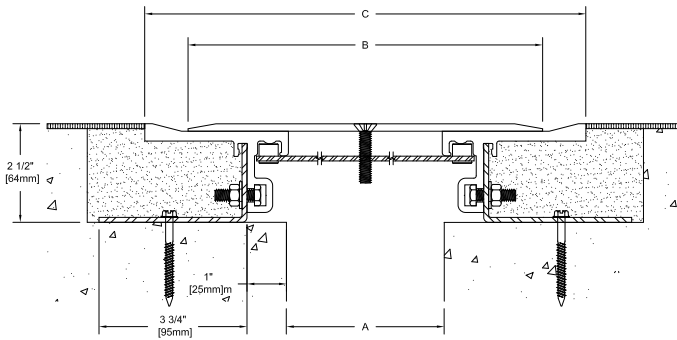
## HDNE - NEW TO EXISTING

Floor to Wall System  
Also Available. Specify HDNEL.

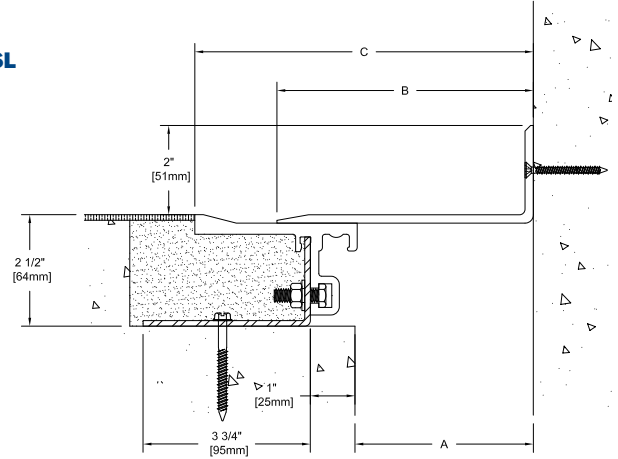


## AIR TERMINAL

### ATS

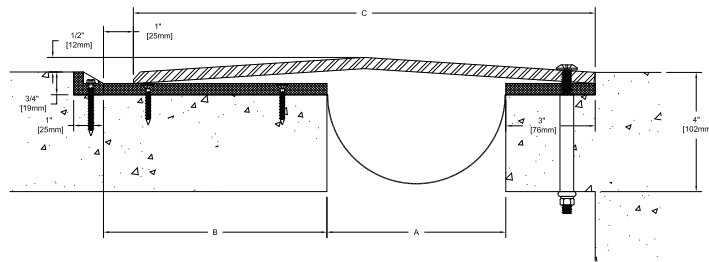


### ATSL



## PARKING GARAGE

### HPG



### FEATURES

- Floor Construction - By Others
- 3/8" (10mm) Hot-Dipped Galvanized Steel Cover Plate
- Neoprene Pad with UHMW Polyethylene Nosing
- EPDM Water Barrier - Optional

Available as 2 Hour Rated System - Balco Fire Barrier Systems are Tested in Accordance with ASTM E 1966 and are Listed with Omega Point Laboratories, Inc. (Contact Balco for Additional Fire Ratings)



Movement Capabilities - 100% and 50%

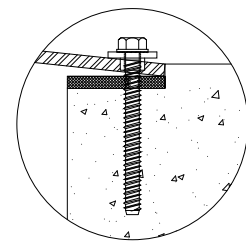
### Air Terminal

Type	A	B	C
ATS-2	2" (51mm)	5 1/2" (140mm)	9 3/16" (233mm)
ATS-3	3" (76mm)	8" (140mm)	10 3/16" (259mm)
ATS-4	4" (102mm)	9" (203mm)	11 3/16" (284mm)

### Parking Garage Series

Type	A	B	C	Movement	Max. Concentrated Load for Joint in Full Open Position
HPG375-2	2" (51mm)	3 1/2" (89mm)	7 1/2" (191mm)	+/- 2" (51mm)	2228 lbs. 9.91 kN
HPG375-4	4" (102mm)	5 1/2" (140mm)	11 1/2" (292mm)	+/- 4" (102mm)	1926 lbs. 8.57 kN
HPG375-6	6" (152mm)	7 1/2" (191mm)	15 1/2" (394mm)	+/- 6" (152mm)	1755 lbs. 7.81 kN
HPG375-8	8" (203mm)	9 1/2" (241mm)	19 1/2" (495mm)	+/- 8" (203mm)	1642 lbs. 7.30 kN
HPG375-10	10" (254mm)	11 1/2" (292mm)	21 1/2" (597mm)	+/- 10" (254mm)	1558 lbs. 6.93 kN
HPG375-12	12" (305mm)	13 1/2" (343mm)	27 1/2" (699mm)	+/- 12" (305mm)	1494 lbs. 6.65 kN
HPG375-14	14" (356mm)	15 1/2" (394mm)	31 1/2" (800mm)	+/- 14" (356mm)	1416 lbs. 6.30 kN
HPG375-16	16" (406mm)	17 1/2" (445mm)	35 1/2" (902mm)	+/- 16" (406mm)	1123 lbs. 5.00 kN
HPG375-18	18" (457mm)	19 1/2" (495mm)	39 1/2" (1003mm)	+/- 18" (457mm)	912 lbs. 4.06 kN

100% Movement - 50% Available



### RETRO-FIT OPTION

#### Notes:

1. Loads are based on galvanized steel plate.
2. Concentrated load is applied to a 2" (51mm) diameter circle.
3. 1 kN = 1000 newtons

# **FIRE BARRIER SYSTEMS**

---

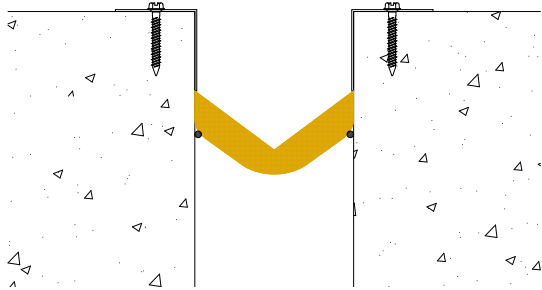
---

---

## METAFLEX® FLOOR FIRE BARRIER SYSTEMS

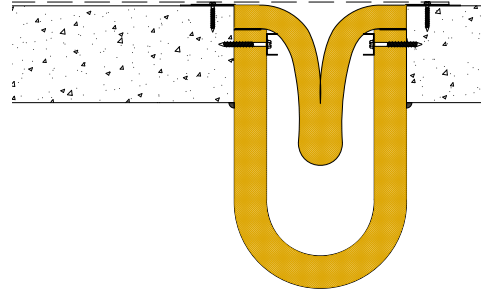
### F2H

Balco's Standard Floor Fire Barrier is 2 Hour Rated for Joint Openings up to 18" (457mm). Contact Factory for 3 and 4 Hour Ratings.



### 2FFB

Metaflex® Floor Fire Barrier is Designed to Accommodate Joint Widths over 18" (457mm) Wide up to 36" (914mm) Maximum Openings, While Maintaining a 2 Hour Rating.



A floor joint cover (of minimum thickness 1/8" [3mm] aluminum or 20ga. galvanized) is required with the floor fire barrier for rating.

#### F2H - Floor Fire Barrier

Type	Maximum Opening
F2H12	12" (305mm)
F2H18	18" (457mm)

#### 2FFB - Floor Fire Barrier

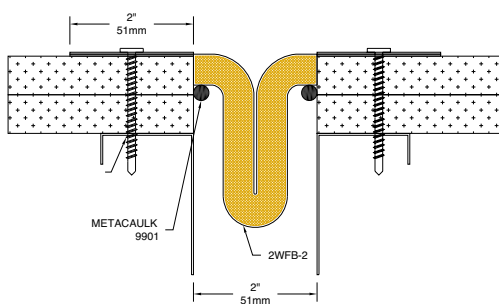
Type	Maximum Opening	Minimum Slab Thickness
2FFB-10.5	21" (533mm)	4 1/2" (114mm)
2FFB-12	24" (610mm)	4 1/2" (114mm)
2FFB-13.5	27" (686mm)	4 1/2" (114mm)
2FFB-15	30" (762mm)	4 1/2" (114mm)
2FFB-16.5	33" (838mm)	4 1/2" (114mm)
2FFB-18	36" (914mm)	4 1/2" (114mm)



Available as 2 Hour Rated System - Balco Fire Barrier Systems are Tested in Accordance with ASTM E 1966 and are Listed with Omega Point Laboratories, Inc. and Warnock Hersey International, Inc.

## METAFLEX® WALL FIRE BARRIER SYSTEMS

### 2WFB



Available as 2 Hour Rated System - Balco Fire Barrier Systems are Tested in Accordance with ASTM E 1966 and are Listed with Omega Point Laboratories, Inc.

(Contact Balco for Additional Fire Ratings)

Wall fire barrier may be installed coverless or in conjunction with a joint cover system.

#### Wall Fire Barrier

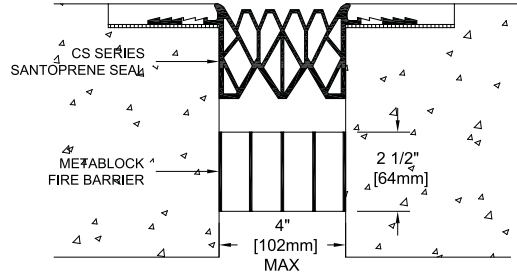
Type	Maximum Opening	A Minimum Wall Thickness	Type	Maximum Opening	A Minimum Wall Thickness
2WFB-4.5	9" (229mm)	6" (152mm)	2WFB-10.5	21" (533mm)	12" (305mm)
2WFB-6	12" (305mm)	6" (152mm)	2WFB-12	24" (610mm)	12" (305mm)
2WFB-7.5	15" (381mm)	6" (152mm)	2WFB-13.5	27" (686mm)	12" (305mm)
2WFB-9	18" (457mm)	6" (152mm)	2WFB-15	30" (762mm)	12" (305mm)
			2WFB-16.5	33" (838mm)	12" (305mm)
			2WFB-18	36" (914mm)	12" (305mm)

**METAFLEX® 5000**  
**METABLOCK™ FIRE BARRIER SYSTEMS**



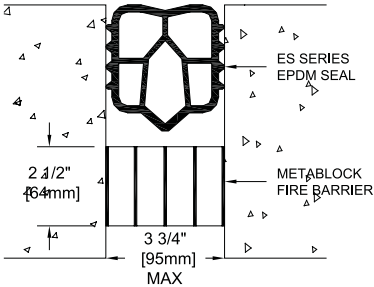
Balco, the industry leader of expansion joint fire barrier systems, is introducing a revolutionary NEW intumescent fire barrier that has been designed to be used in conjunction with Balco's DuraFlex™ Expansion Joint Systems. MetaBlock™ is a two, three or four (2, 3 or 4) hour rated fire barrier composed of a proprietary intumescent material which allows for easy installation with no mechanical fasteners required. Splices and transitions are easily accomplished on-site, cutting installation time in half.

**CS-300**

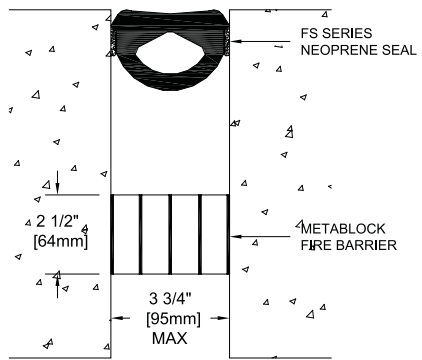


MetaFlex® 5000			
MetaBlock™ - UL Listed			
FLOOR		WALL	
MetaBlock™		MetaBlock™	
MBF2H02	For use with ES and FS series and metal covers with a max open 2" - 2 Hour Rating	MBW2H02	For use with ES and FS series with a max open 2" - 2 Hour Rating
MBF2H04	For use with CS, ES and FS series and metal with a max open 4" - 2 Hour Rating	MBW2H04	For use with ES and FS series and metal with a max open 4" - 2 Hour Rating
MBF3H04	For use with CS, ES and FS series with a max open 4" - 3 Hour Rating		
MBF4H04	For use with CS, ES and FS series and metal with a max open 4" - 4 Hour Rating		

**ES-300**



**FS-300**

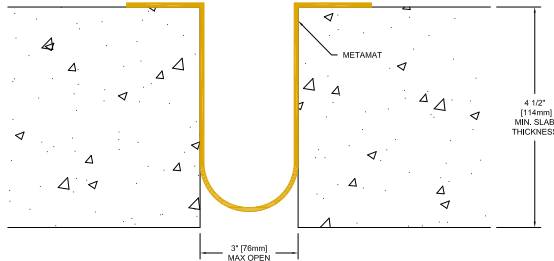




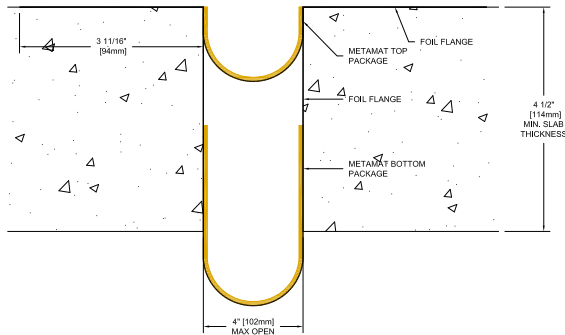
## METAFLX® 5000 METAMAT™ FLOOR FIRE BARRIER SYSTEMS

Balco, the industry leader of engineered fire barrier systems used in expansion joint cover systems, is pleased to introduce a revolutionary NEW intumescent fire barrier design. MetaMat™ two (2) hour rated fire barrier is a unique and proprietary intumescent material which allows for easy installation into small joints as well as large joints. Splices and transition requirements are easily accomplished on-site, reducing installation time, and eliminating errors.

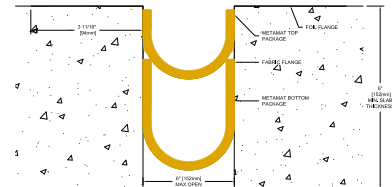
### MF2H03



### MF2H04F



### MF2H06



MetaFlex® 5000			
MetaMat™ - UL Listed			
FLOOR		WALL	
Model #	Application	Model #	Application
MF2H03	Floor to Floor Balco 7500 series. Roof bellows and EPDM covers with a maximum opening of 3"	MW2H03	Wall to Wall All wall to wall conditions with metal covers
MFV2H03	Floor to Wall Balco 7500 series. Roof bellows and EPDM covers with a maximum opening of 3"	MCW2H03	Corner Wall All metal corner wall conditions with maximum opening of 3"
MF2H04F	Floor to Floor All floor to floor conditions with metal covers and maximum opening of 4" All aluminum roof covers	MW2H04	Wall to Wall All wall to wall conditions with maximum opening of 4"
MFV2H04F	Floor to Wall All floor to wall conditions with metal covers maximum opening of 4" All aluminum roof covers	MCW2H04	Corner Wall All corner wall conditions with maximum opening of 4"
MF2H06	Floor to Floor All floor to floor and roof to roof conditions with metal covers and maximum opening of 6"	MW2H06	Wall to Wall All wall to wall conditions with maximum opening of 6"
MFV2H06	Floor to Wall All floor to floor and roof to roof conditions with metal covers and maximum opening of 6"	MCW2H06	Corner Wall All corner wall conditions with maximum opening of 6"

Material sold in 20 linear foot increments, on 20 foot, 40 foot or 80 foot rolls



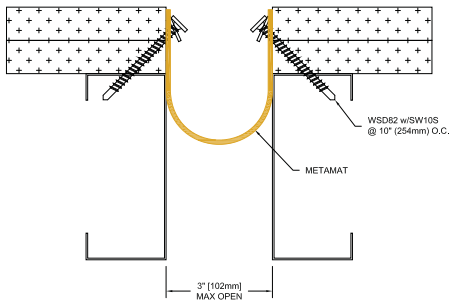


## METAFLEX® 5000 METAMAT™ WALL FIRE BARRIER SYSTEMS

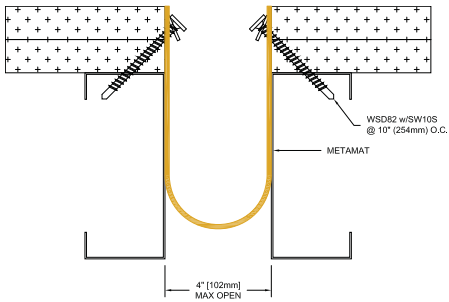
Balco, the industry leader of engineered fire barrier systems used in expansion joint cover systems, is pleased to introduce a revolutionary NEW intumescent fire barrier design. MetaMat™ two (2) hour rated fire barrier is a unique and proprietary intumescent material which allows for easy installation into small joints as well as large joints. Splices and transition requirements are easily accomplished on-site, reducing installation time, and eliminating errors.



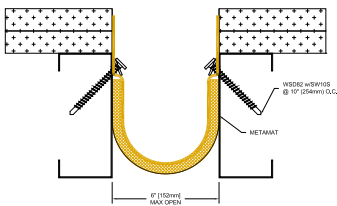
### MW2H03

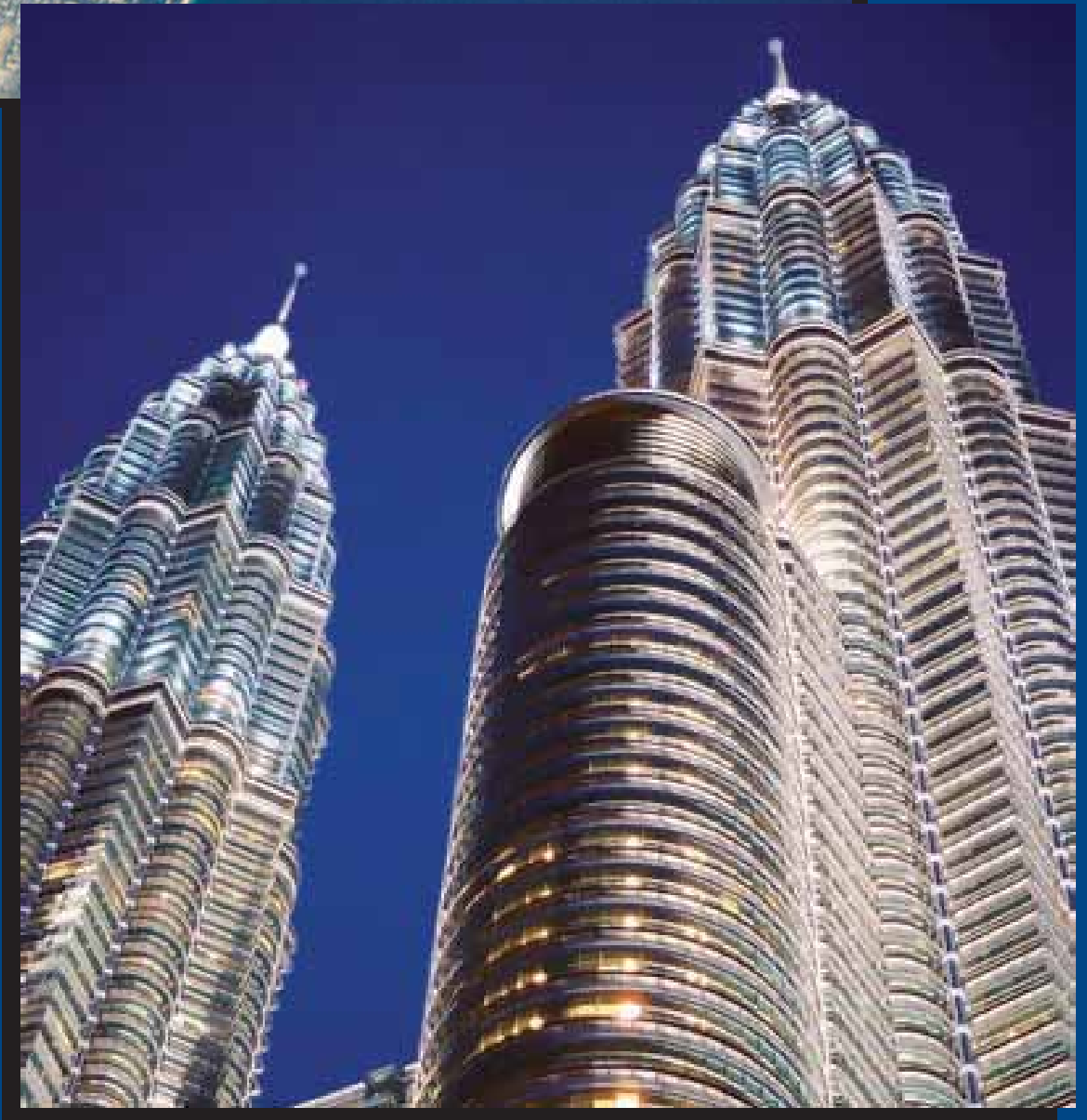


### MW2H04



### MW2H06

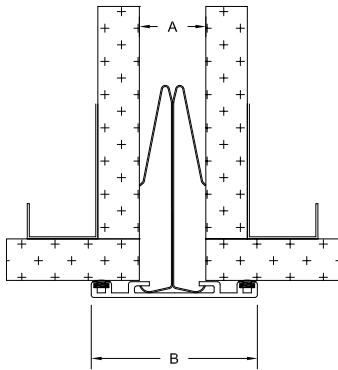




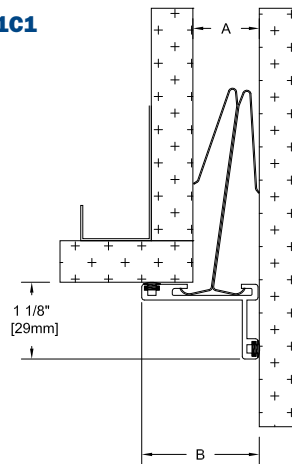
# CLIP-IN WALL AND CEILING COVERS



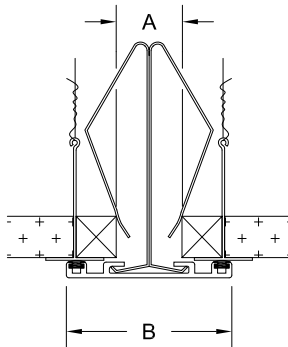
**1W1**



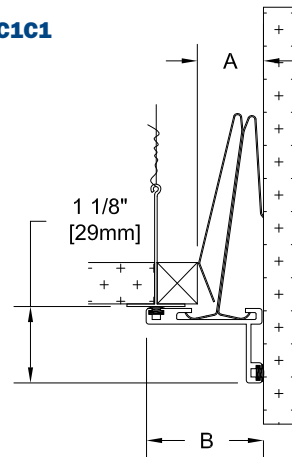
**1C1**



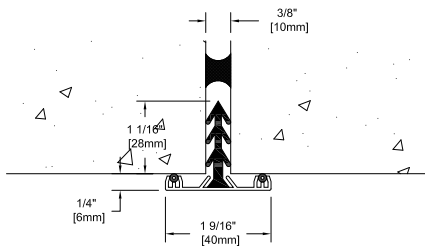
**C1W1**



**C1C1**



**CC-375**



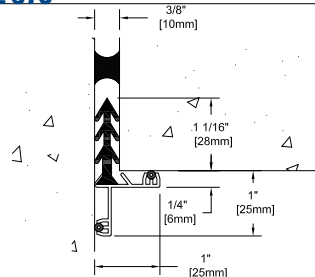
**FEATURES**

- Aluminum Cover Plate, Standard Architectural Class II Anodized
- Spring Steel Clip



Movement Capabilities - 100% and 50%

**CCL-375**

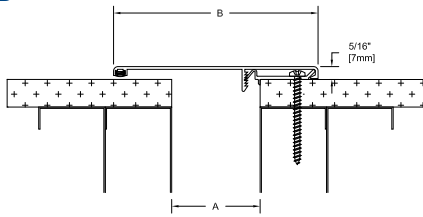


**Clip-In Series**

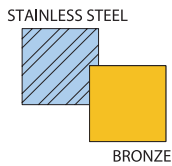
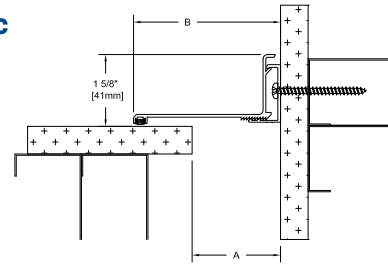
Type	A	B	Type	A	B
<b>1W1</b>	1" (25mm)	2 1/2" (64mm)	<b>C1W1</b>	1" (25mm)	2 1/2" (64mm)
<b>2W2</b>	2" (51mm)	4" (102mm)	<b>C2W2</b>	2" (51mm)	4" (102mm)
<b>1C1</b>	1" (25mm)	1 3/4" (44mm)	<b>C1C1</b>	1" (25mm)	1 3/4" (44mm)
<b>2C2</b>	2" (51mm)	3" (76mm)	<b>C2C2</b>	2" (51mm)	3" (76mm)

## SURFACE MOUNTED WALL AND CEILING COVERS

**WD**



**WDC**



### WD/WDC SERIES OPTIONAL LAMINATES

Stainless Steel or Bronze Available.

### FEATURES

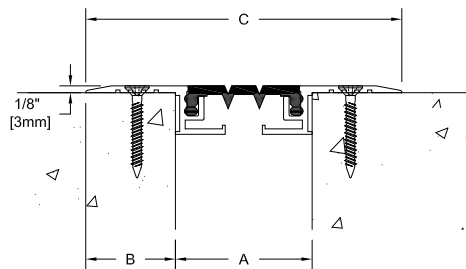
- Extruded Aluminum Cover Plate, Standard Architectural Class II Anodized
- Extruded Aluminum Clip-Channel (6063-T5) - Standard Mill Finish for WD Series, Standard Architectural Class II Anodized for Vinylines Series
- Extruded Santoprene Insert

Available as 2 Hour Rated System - Balco Fire Barrier Systems are Tested in Accordance with ASTM E 1966 and are Listed with UL, WH or Omega Point Laboratories, Inc. (Contact Balco for Additional Fire Ratings)



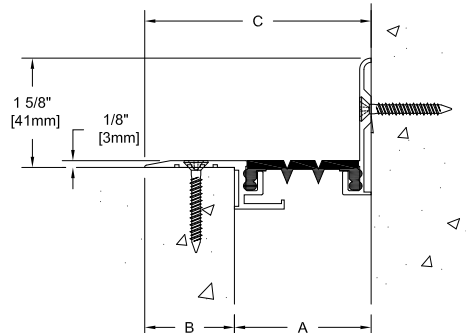
Movement Capabilities - 50%

**75FWPE**



Movement Capabilities - 25%

**75FWVPE**



### WD/WDC Series

Type	A	B
<b>WD-1</b>	1" (25mm)	3 1/8" (79mm)
<b>WDC-1</b>	1" (25mm)	1 13/16" (46mm)
<b>WD-2</b>	2" (51mm)	4 5/8" (117mm)
<b>WDC-2</b>	2" (51mm)	3 5/16" (84mm)
<b>WD-3</b>	3" (76mm)	6 1/8" (156mm)
<b>WDC-3</b>	3" (76mm)	4 13/16" (123mm)
<b>WD-4</b>	4" (102mm)	7 5/8" (194mm)
<b>WDC-4</b>	4" (102mm)	6 3/8" (161mm)

### 7500 Wall/Ceiling Series

Type	A	B	C
<b>75FWPE-1</b>	1" (25mm)	1 3/8" (36mm)	3 3/16" (97mm)
<b>75FWPE-2</b>	2" (51mm)	1 5/16" (33mm)	4 5/8" (117mm)
<b>75FWVPE-1</b>	1" (25mm)	1 3/8" (36mm)	2 3/8" (61mm)
<b>75FWVPE-2</b>	2" (51mm)	1 5/16" (33mm)	3 5/16" (84mm)

7500 Series Available in 1"(25mm) and 2"(51mm) Only



Aluminum Cover Plate with Centering Bar;  
Standard Architectural Class II Anodized

- Extruded Aluminum Sub-Channel (6063-T5) - Standard Mill Finish
- Extruded Elastomeric Insert - Santoprene
- Extruded Aluminum Sub-Channel (6063-T5) - Standard Architectural Class II Anodized (Designed for Feathered Wall Finish)

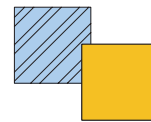
Available as 2 Hour Rated System - Balco Fire Barrier Systems are Tested in Accordance with ASTM E 1966 and are Listed with UL, WH or Omega Point Laboratories, Inc. (Contact Balco for Additional Fire Ratings)



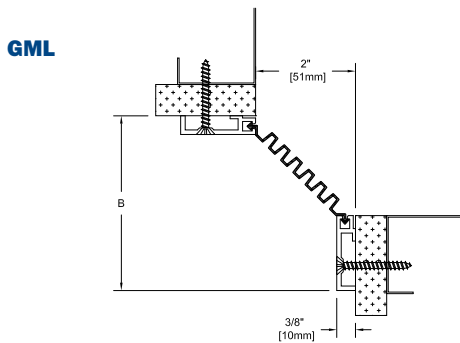
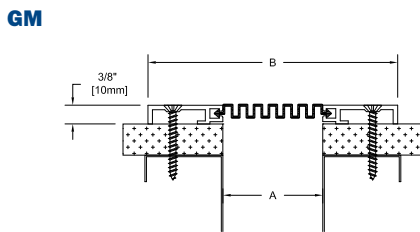
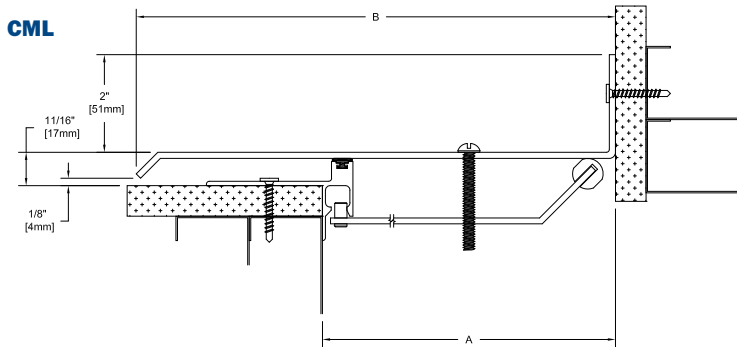
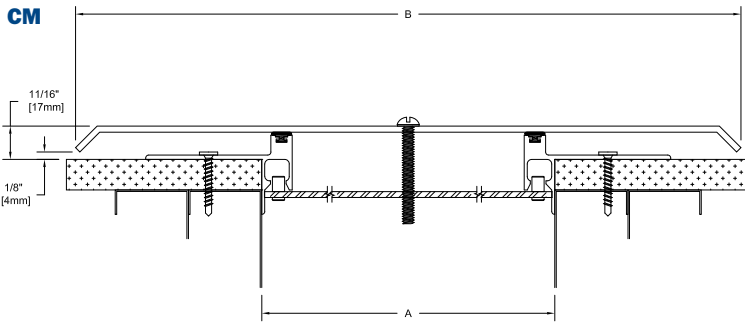
Movement Capabilities - 100% and 50%  
(100% & 50% for CM series)  
(100% for GM series)



STAINLESS STEEL



BRONZE



**CM/CML Series**

Type	A	B
<b>CM-4</b>	4" (102mm)	9 5/8" (244mm)
<b>CM-5</b>	5" (127mm)	11 5/8" (295mm)
<b>CM-6</b>	6" (152mm)	13 5/8" (346mm)
<b>CM-7</b>	7" (178mm)	15 5/8" (397mm)
<b>CM-8</b>	8" (203mm)	17 5/8" (448mm)
<b>CM-10</b>	10" (254mm)	21 5/8" (549mm)
<b>CM-12</b>	12" (305mm)	25 5/8" (651mm)
<b>CML-4</b>	4" (102mm)	6 13/16" (173mm)
<b>CML-5</b>	5" (127mm)	8 5/16" (211mm)
<b>CML-6</b>	6" (152mm)	9 13/16" (249mm)
<b>CML-7</b>	7" (178mm)	11 5/16" (287mm)
<b>CML-8</b>	8" (203mm)	12 13/16" (325mm)
<b>CML-10</b>	10" (254mm)	15 13/16" (402mm)
<b>CML-12</b>	12" (305mm)	18 13/16" (478mm)

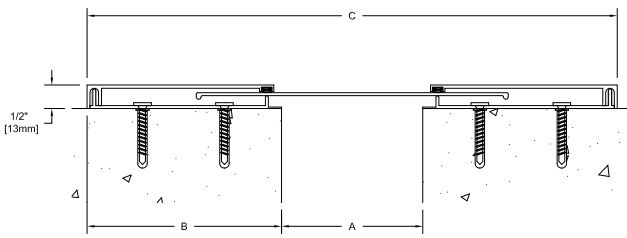
**GM/GML Series**

Type	A	B
<b>GM-1</b>	1" (25mm)	4" (102mm)
<b>GML-1</b>	1" (25mm)	2 1/2" (64mm)
<b>GM-2</b>	2" (51mm)	5" (127mm)
<b>GML-2</b>	2" (51mm)	3 1/2" (89mm)
<b>GM-3</b>	3" (76mm)	6" (152mm)
<b>GML-3</b>	3" (76mm)	4 1/2" (114mm)

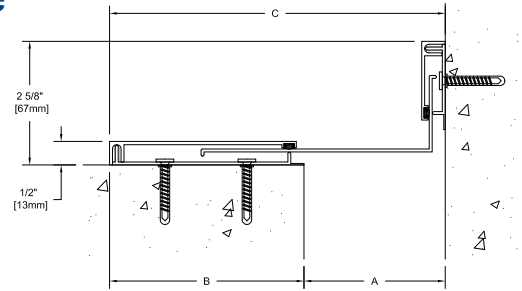
Contact Factory for Larger Joint Sizes

# SURFACE MOUNTED WALL AND CEILING COVERS (continued)

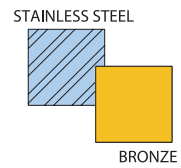
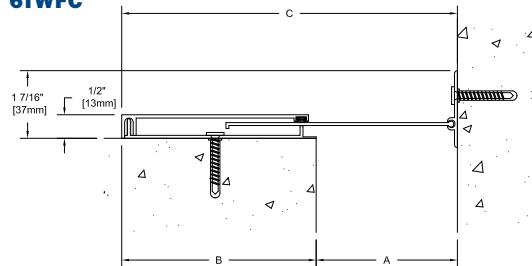
**6TW**



**6TWC**



**6TWFC**



**6000 SERIES OPTIONAL LAMINATES**

Stainless Steel or Bronze Available.

**FEATURES**

- Sliding Aluminum Center Plate with Snap-Lock Cover Plates - Standard Architectural Class II Anodized (Custom Angles Available)
- Extruded Aluminum Sub-Channel (6063-T5) - Standard Mill Finish



Available as 2 Hour Rated System - Balco Fire Barrier Systems are Tested in Accordance with ASTM E 1966 and are Listed with UL, WH or Omega Point Laboratories, Inc. (Contact Balco for Additional Fire Ratings)



Movement Capabilities - 100% and 50%

**6000 Wall and Ceiling Series**

Type	A	B	Movement	Type	A	B	Movement
6GW-1/6TW-1	1" (25mm)	4 3/4" (121mm)	+/- 1" (25mm)	6GW-4/6TW-4	4" (102mm)	14 1/8" (359mm)	+/- 4" (102mm)
6GW-1-2/6TW-1-2	2" (51mm)	5 3/4" (146mm)	+/- 1" (25mm)	6GW-3-6/6TW-3-6	6" (152mm)	14 1/4" (362mm)	+/- 3" (76mm)
6GW-2/6TW-2	2" (51mm)	7 3/4" (197mm)	+/- 2" (51mm)	6GW-4-8/6TW-4-8	8" (203mm)	18 1/8" (460mm)	+/- 4" (102mm)
6GW-3/6TW-3	3" (76mm)	11 1/4" (286mm)	+/- 3" (76mm)				

**6000 Wall and Ceiling Series**

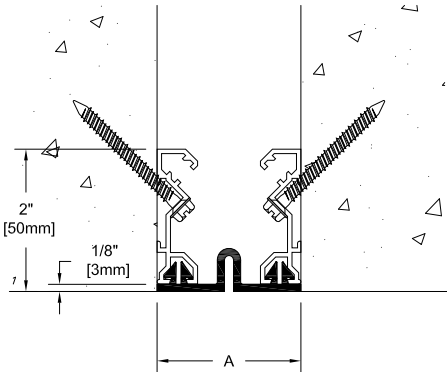
Type	A	B	Movement	Type	A	B	Movement
6GWC-1/6TWC-1	1" (25mm)	2 7/8" (73mm)	+/- 1/2" (13mm)	6GWFC-1/6TWCFC-1	1" (25mm)	2 7/8" (73mm)	+/- 1/2" (13mm)
6GWC-1-2/6TWC-1-2	2" (51mm)	3 7/8" (98mm)	+/- 1/2" (13mm)	6GWFC-1-2/6TWCFC-1-2	2" (51mm)	3 7/8" (98mm)	+/- 1/2" (13mm)
6GWC-2/6TWC-2	2" (51mm)	4 7/8" (124mm)	+/- 1" (25mm)	6GWFC-2/6TWCFC-2	2" (51mm)	4 7/8" (124mm)	+/- 1" (25mm)
6GWC-3/6TWC-3	3" (76mm)	7 1/8" (181mm)	+/- 1 1/2" (38mm)	6GWFC-3/6TWCFC-3	3" (76mm)	7 1/8" (181mm)	+/- 1 1/2" (38mm)
6GWC-4/6TWC-4	4" (102mm)	9 1/16" (230mm)	+/- 2" (51mm)	6GWFC-4/6TWCFC-4	4" (102mm)	9 1/16" (230mm)	+/- 2" (51mm)
6GWC-3-6/6TWC-3-6	6" (152mm)	10 1/8" (257mm)	+/- 1 1/2" (38mm)	6GWFC-3-6/6TWCFC-3-6	6" (152mm)	10 1/8" (257mm)	+/- 1 1/2" (38mm)
6GWC-4-8/6TWC-4-8	8" (203mm)	13 1/16" (332mm)	+/- 2" (51mm)	6GWFC-4-8/6TWCFC-4-8	8" (203mm)	13 1/16" (332mm)	+/- 2" (51mm)

Maximum Joint Size for Ceiling Application is 4"

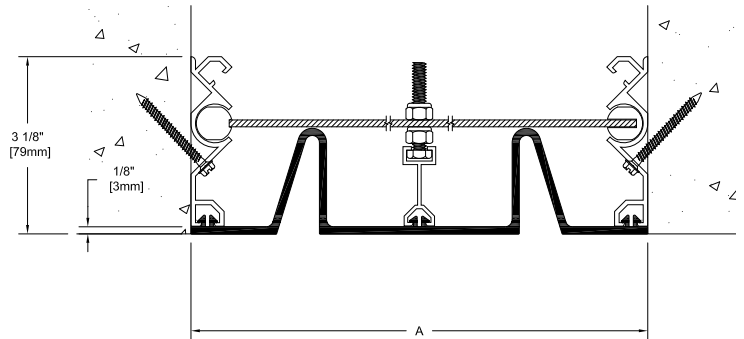
# INTERIOR WALL JOINT COVERS FLEXIBLE INSERTS



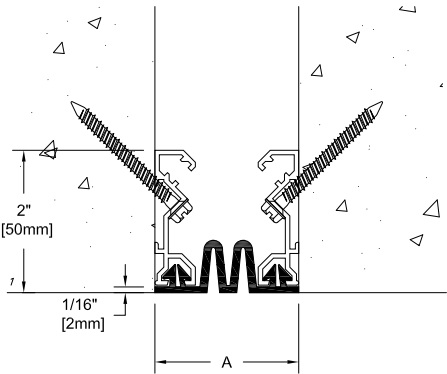
**TCWW (2" - 6" JOINTS)**  
(51mm - 152mm)



**TCWW (7" - 10" JOINTS)**  
(178mm - 254mm)

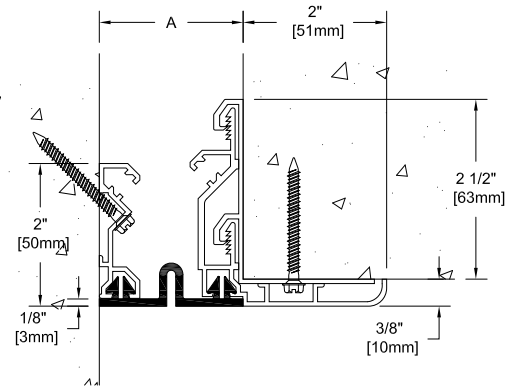


**TCVS (2" - 6" JOINTS)**  
(51mm - 152mm)

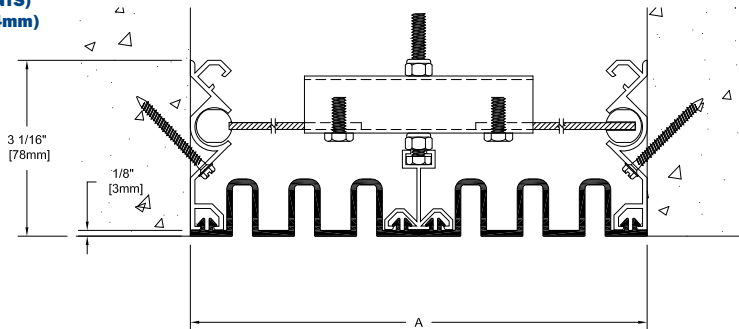


**TCWWE (2" - 6" JOINTS)**  
(51mm - 152mm)

Also Available as Variable Seal.



**TCVS (7" - 10" JOINTS)**  
(178mm - 254mm)



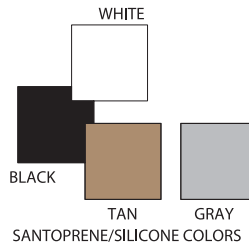
## FEATURES

- Extruded Santoprene or Silicone Primary Seal
- Extruded Aluminum Sub-Channel (6063-T5) - Standard Mill Finish
- Centering Bar (7' - 10" joints)
- Secondary Seal (Continuous) - Santoprene

Available as 2 Hour Rated System - Balco Fire Barrier Systems are Tested in Accordance with ASTM E 1966 and are Listed with Omega Point Laboratories, Inc. (Contact Balco for Additional Fire Ratings)



Movement Capabilities - 100% and 50%



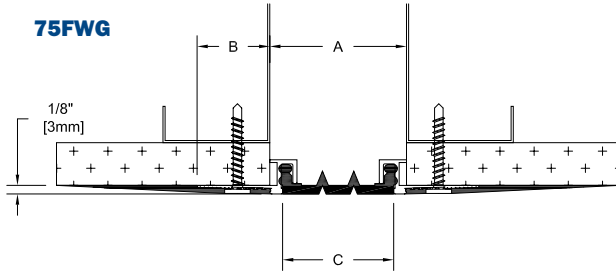
## Flat & Variable Seal Series

Type	A
TCWW/TCVS/TCWWE/TCVSE-2	2" (51mm)
TCWW/TCVS/TCWWE/TCVSE-3	3" (76mm)
TCWW/TCVS/TCWWE/TCVSE-4	4" (102mm)
TCWW/TCVS-5	5" (127mm)
TCWW/TCVS-6	6" (152mm)
TCWW/TCVS-8	8" (203mm)
TCWW/TCVS-9	9" (229mm)
TCWW/TCVS-10	10" (254mm)
TCWW/TCVS-12	12" (305mm)

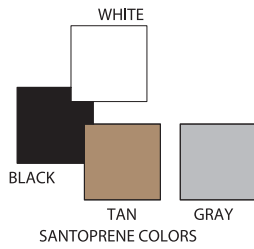
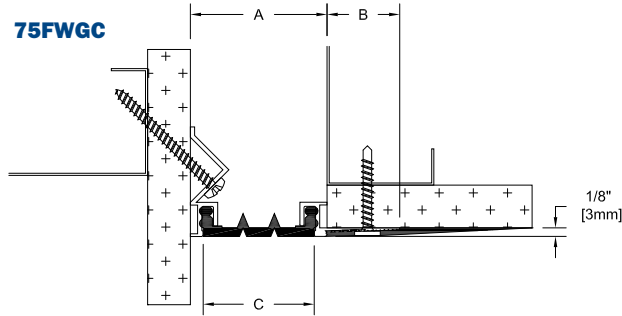
Specify TCWW/TCWWE for 50% Movement  
Specify TCVS/TCVSE for 100% Movement  
Larger joint sizes available contact factory

# GYPSUM BOARD WALL AND CEILING COVERS

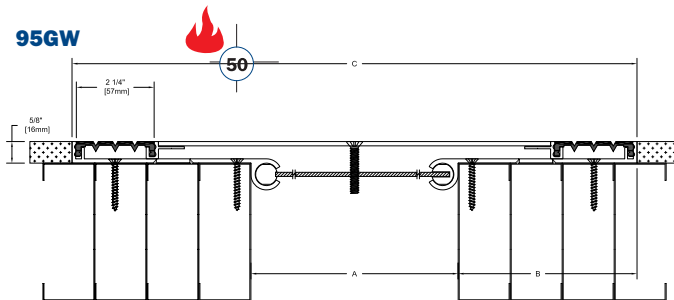
## 75FWG



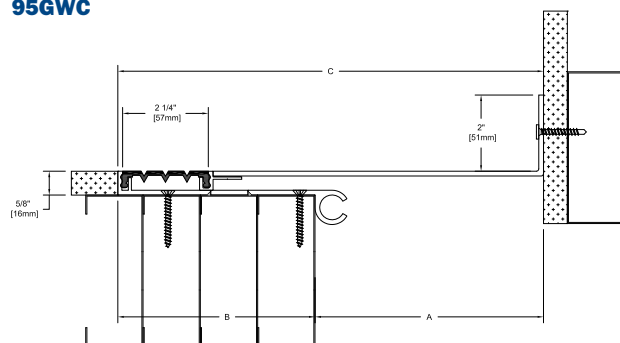
## 75FWGC



## 95GW



## 95GWC



## 7500 Wall/Ceiling Series

Type	A	B	C
75FWG-1	1" (25mm)	1 3/16" (30mm)	13/16" (21mm)
75FWG-2	2" (51mm)	1 1/16" (27mm)	1 5/8" (41mm)
75FWGC-1	1" (25mm)	1 3/16" (30mm)	13/16" (21mm)
75FWGC-2	2" (51mm)	1 1/16" (27mm)	1 5/8" (41mm)

7500 Series Available in 1"(25mm) and 2"(51mm) Joint Size Only  
25% movement capabilities

## 9500 Wall/Ceiling Series

Type	A	B	C
95GW-2	2" (51mm)	4 5/8" (117mm)	9 3/8" (238mm)
95GW-3	3" (76mm)	5 5/8" (143mm)	10 3/8" (264mm)
95GW-4	4" (102mm)	6 5/8" (168mm)	11 3/8" (289mm)
95GWC-2	2" (51mm)	3 5/16" (84mm)	5 11/16" (144mm)
95GWC-3	3" (76mm)	4 5/16" (110mm)	6 11/16" (170mm)
95GWC-4	4" (102mm)	5 5/16" (135mm)	7 11/16" (195mm)

Contact Factory for Larger Joint Sizes  
100% & 50% movement capabilities

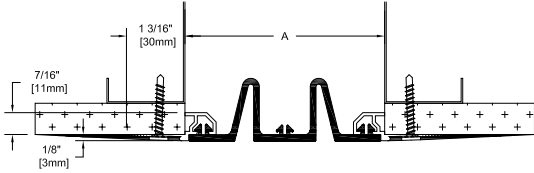
Type	A
GCWW/GCWC/GCVS/GCVSC-2	2" (51mm)
GCWW/GCWC/GCVS/GCVSC-3	3" (76mm)
GCWW/GCWC/GCVS/GCVSC-4	4" (102mm)
GCWW/GCWC/GCVS/GCVSC-5	5" (127mm)
GCWW/GCWC/GCVS/GCVSC-6	6" (152mm)
GCWW/GCWC/GCVS/GCVSC-8	8" (203mm)
GCWW/GCWC/GCVS/GCVSC-9	9" (229mm)
GCWW/GCWC/GCVS/GCVSC-10	10" (254mm)
GCWW/GCWC/GCVS/GCVSC-12	12" (305mm)

Specify GCWW/GCWC for 50% Movement  
Specify GCVS/GCVSC for 100% Movement

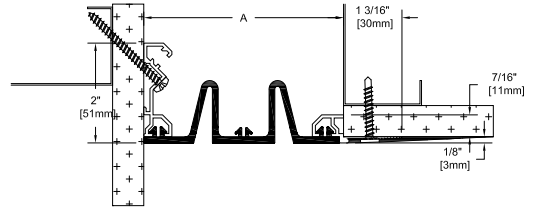
Type	A	B
GP-1	1" (25mm)	1 5/8" (41mm)
GPL-1	1" (25mm)	1 1/4" (32mm)
GP-2	2" (51mm)	2 5/8" (67mm)
GPL-2	2" (51mm)	2 1/4" (57mm)
GP-3	3" (76mm)	3 5/8" (92mm)
GPL-3	3" (76mm)	3 1/4" (83mm)



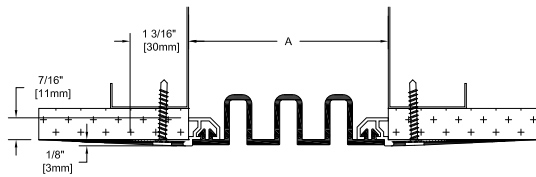
**GCWW**



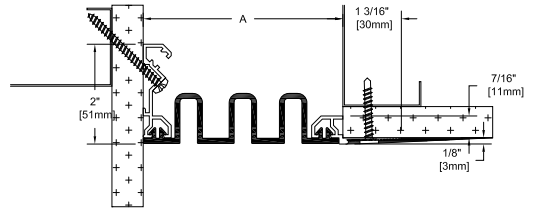
**GCWC**



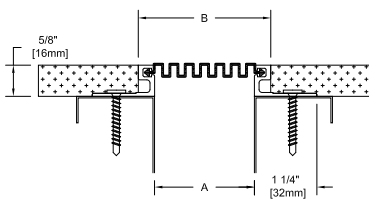
**GCVS**



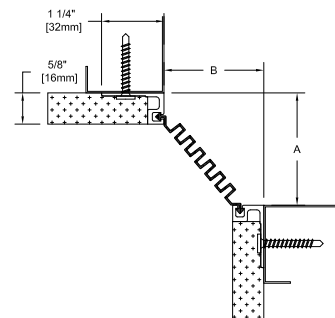
**GCVSC**



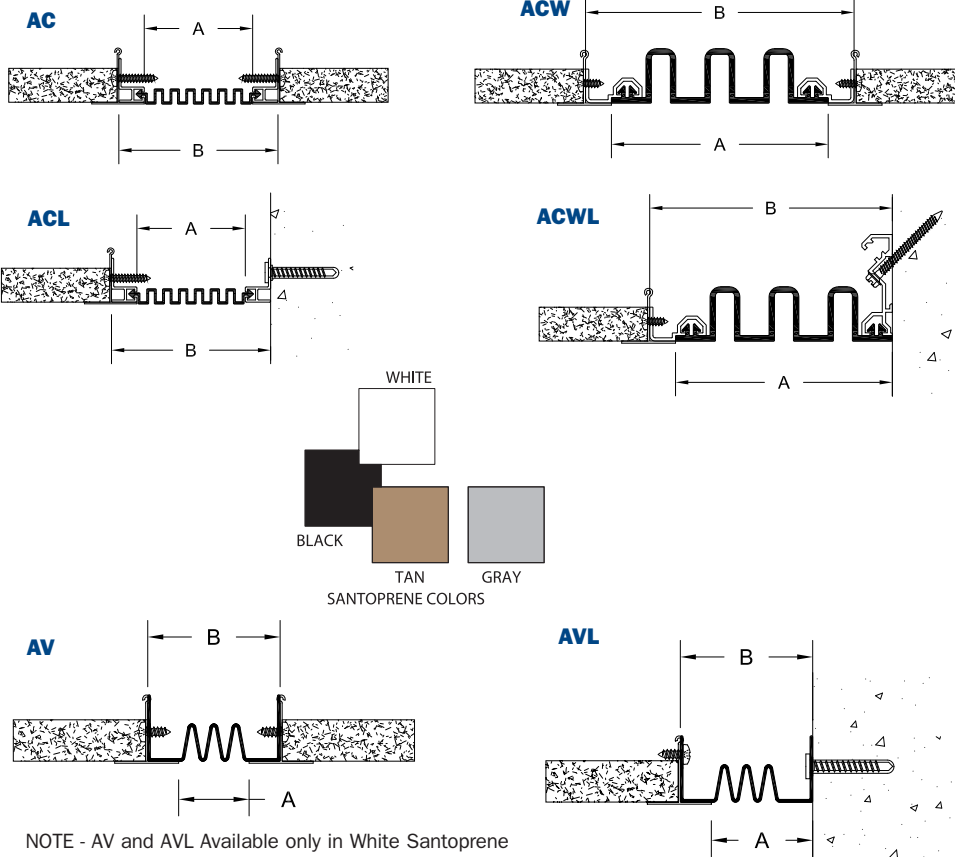
**GP**



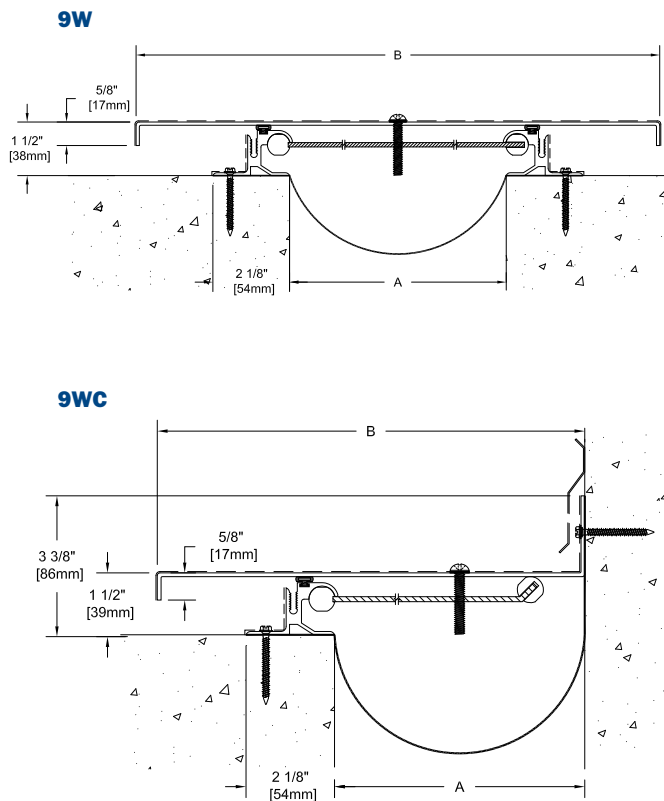
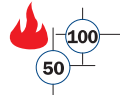
**GPL**



## SUSPENDED CEILING COVERS



## EXTERIOR WALL JOINT COVERS ALL ALUMINUM



### FEATURES

- Aluminum Cover Plate, Standard Mill Finish (Self-Centering for Wall to Wall and Roof to Roof Applications)
- Extruded Aluminum Sub-Channel (6063-T5) - Standard Mill Finish
- Centering Bar
- EPDM Water Barrier

### OPTIONAL COVER PLATE MATERIALS

9W/9WC Series Wall Covers are Also Available with Stainless Steel Cover Plates. (Base Members are Aluminum Extrusions) Specify SS9W/SS9WC for Stainless Steel.

## Vinylines Series

Type	A	B	
<b>AC-1</b>	1" (25mm)	2" (51mm)	
<b>ACL-1</b>	1" (25mm)	2" (51mm)	
<b>AC-2</b>	2" (51mm)	3" (76mm)	
<b>ACL-2</b>	2" (51mm)	3" (76mm)	
<b>AC-3</b>	3" (76mm)	4" (102mm)	
<b>ACL-3</b>	3" (76mm)	4" (102mm)	
<b>ACWW-2</b>	2" (51mm)	3" (76mm)	
<b>ACWW-3</b>	3" (76mm)	4" (102mm)	
<b>ACWW-4</b>	4" (102mm)	5" (127mm)	
<b>ACWW-5</b>	5" (127mm)	6" (152mm)	
<b>ACWW-6</b>	6" (152mm)	7" (178mm)	
<b>ACWW-8</b>	8" (203mm)	9" (229mm)	
<b>ACWW-9</b>	9" (229mm)	10" (254mm)	
<b>ACWW-10</b>	10" (254mm)	11" (279mm)	
<b>ACWW-12</b>	12" (305mm)	13" (330mm)	
<b>ACWL-2</b>	2" (51mm)	2 1/2" (64mm)	
<b>ACWL-3</b>	3" (76mm)	3 1/2" (89mm)	
<b>ACWL-4</b>	4" (102mm)	4 1/2" (114mm)	
<b>ACWL-5</b>	5" (127mm)	5 1/2" (140mm)	
<b>ACWL-6</b>	6" (152mm)	6 1/2" (165mm)	
<b>ACWL-8</b>	8" (203mm)	8 1/2" (216mm)	
<b>ACWL-9</b>	9" (229mm)	9 1/2" (241mm)	
<b>ACWL-10</b>	10" (254mm)	10 1/2" (267mm)	
<b>ACWL-12</b>	12" (305mm)	12 1/2" (318mm)	
<b>AV-1</b>	1" (25mm)	2" (51mm)	+/-1" (25mm)
<b>AV-1</b>	2" (51mm)	3" (76mm)	+/-1" (25mm)
<b>AVL-1</b>	1 7/16" (37mm)	2" (51mm)	+/-1" (25mm)
<b>AVL-1</b>	2 7/16" (62mm)	3" (76mm)	+/-1" (25mm)

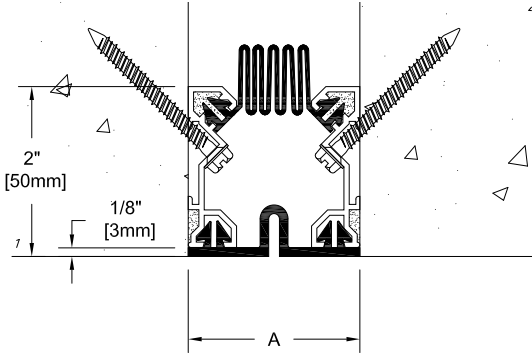
## Aluminum Wall/Roof Series

Type	A	B
<b>9W-2</b>	2" (51mm)	6 3/8" (162mm)
<b>9W-3</b>	3" (76mm)	8 1/2" (216mm)
<b>9W-4</b>	4" (102mm)	10 1/2" (267mm)
<b>9W-6</b>	6" (152mm)	14 1/2" (368mm)
<b>9WC-2</b>	2" (51mm)	4 1/16" (103mm)
<b>9WC-3</b>	3" (76mm)	5 3/4" (146mm)
<b>9WC-4</b>	4" (102mm)	7 1/4" (184mm)
<b>9WC-6</b>	6" (152mm)	10 1/4" (260mm)

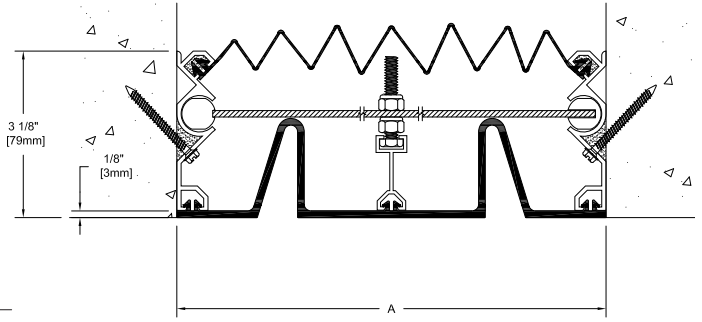
# EXTERIOR WALL JOINT COVERS FLEXIBLE INSERTS



**FCWW (2" - 6" JOINTS)**  
(51mm - 152mm)

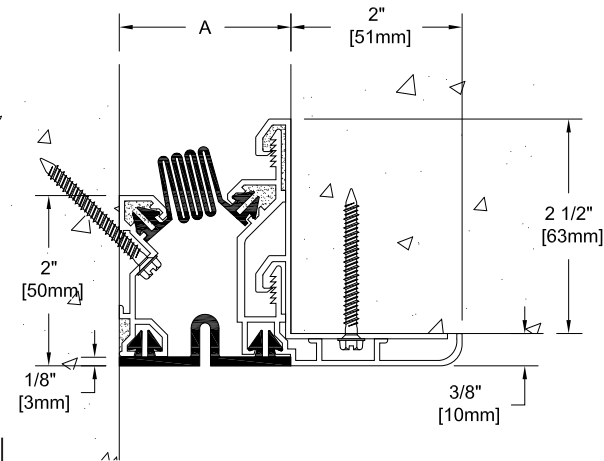


**FCWW (7" - 10" JOINTS)**  
(178mm - 254mm)

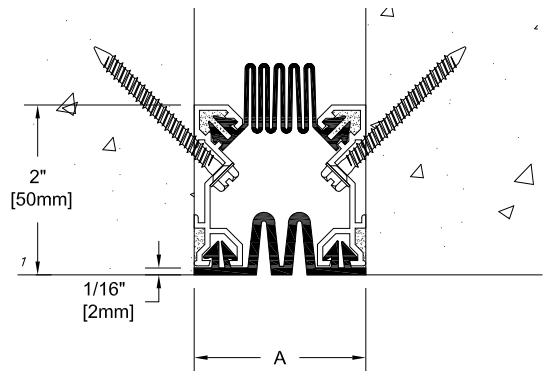


**FCWWE (2" - 6" JOINTS)**  
(51mm - 152mm)

Also Available as Variable Seal.



**FCVS (2" - 6" JOINTS)**  
(51mm - 152mm)

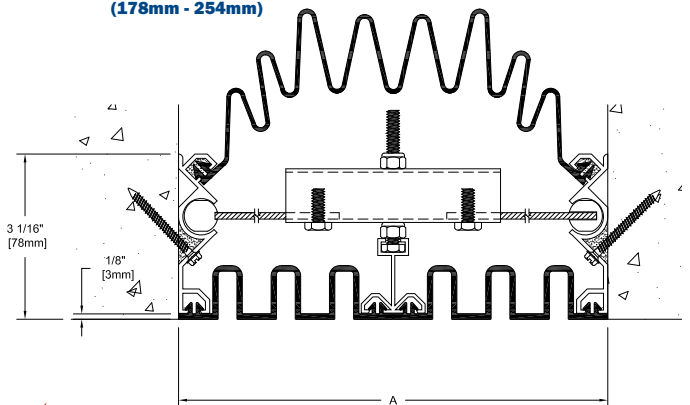


## Flexible Inserts

Type	A
FCWW/FCVS/FCWWE/FCVSE-2	2" (51m)
FCWW/FCVS/FCWWE/FCVSE-3	3" (76m)
FCWW/FCVS/FCWWE/FCVSE-4	4" (102m)
FCWW/FCVS-5	5" (127m)
FCWW/FCVS-6	6" (152m)
FCWW/FCVS-8	8" (203m)
FCWW/FCVS-9	9" (229m)
FCWW/FCVS-10	10" (254m)
FCWW/FCVS-12	12" (305m)

Specify FCWW/FCWWE for 50% Movement  
Specify FCVS/FCVSE for 100% Movement  
Larger joint sizes available contact factory

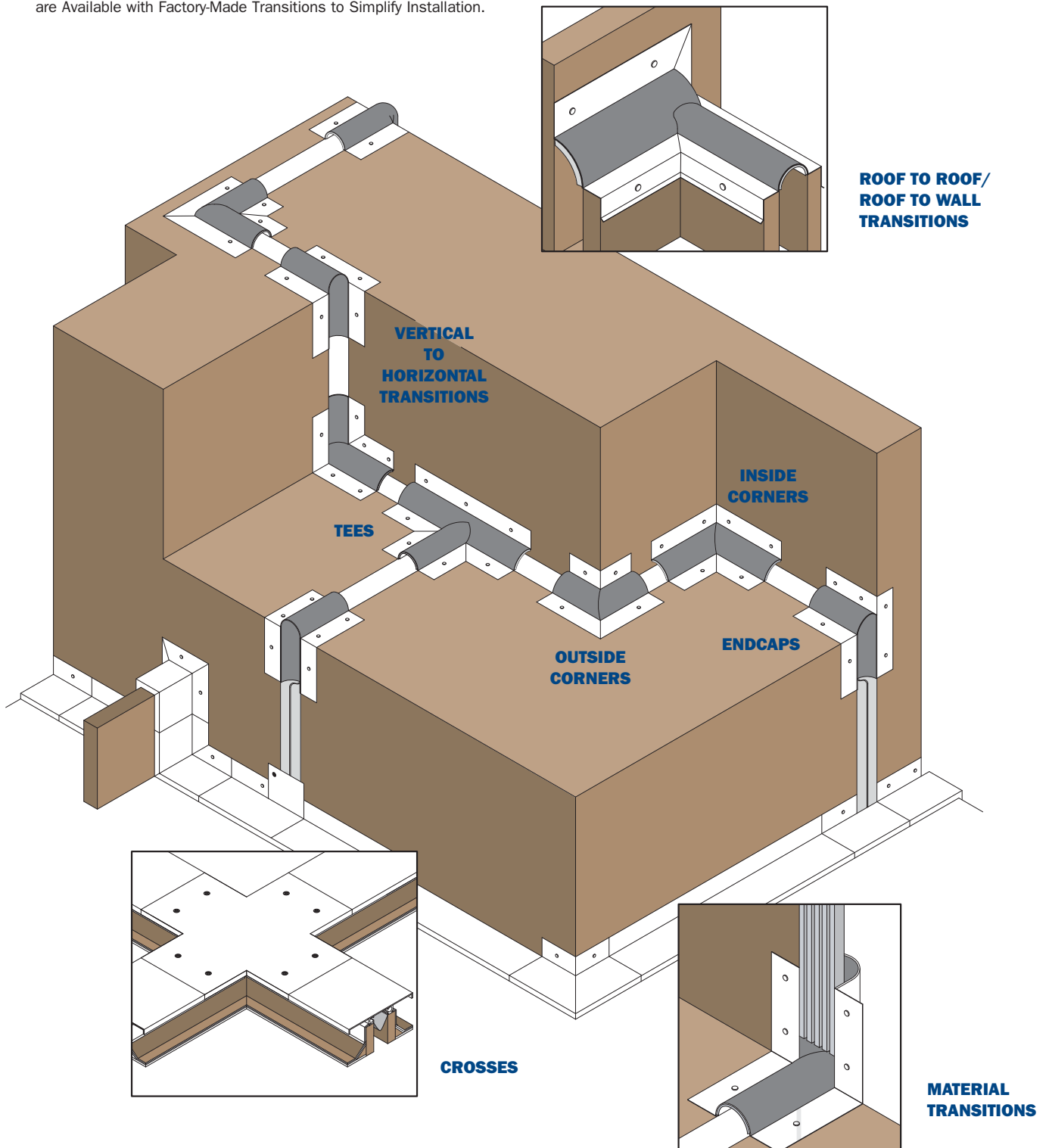
**FCVS (7" - 10" JOINTS)**  
(178mm - 254mm)



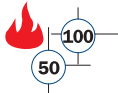


## FACTORY ROOF TRANSITIONS

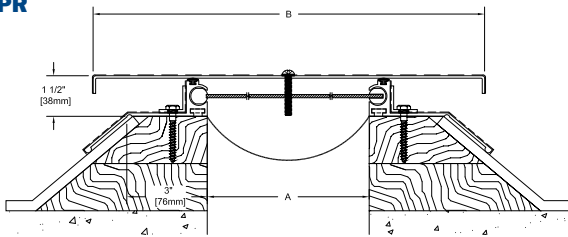
Balco's Roof Covers, Both Aluminum and Flexible Bellows, are Available with Factory-Made Transitions to Simplify Installation.



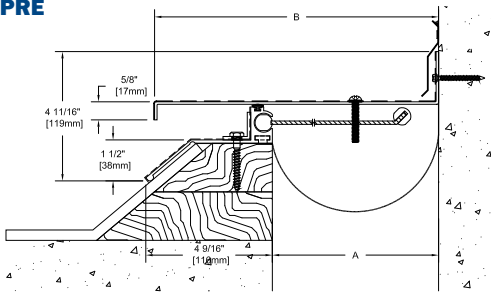
# ALUMINUM ROOF COVERS



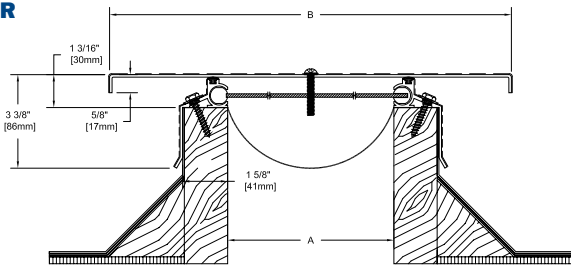
## LPR



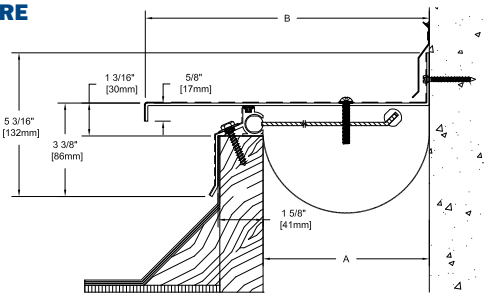
## LPRE



## FR



## FRE



Available as 2 Hour Rated System - Balco Fire Barrier Systems are Tested in Accordance with ASTM E 1966 and are Listed with Omega Point Laboratories, Inc. (Contact Balco for Additional Fire Ratings)



### OPTIONAL COVER PLATE MATERIALS

FR/FRE/LPR/LPRE/9W/9WC Series Roof Covers are Also Available with Stainless Steel Cover Plates. (Base Members are Aluminum Extrusions) Specify SSFR/SSFRE/SSLPR/SSLPRE for Stainless Steel.

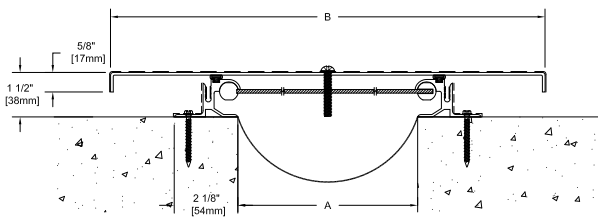
### Aluminum Wall/Roof Series

Type	A	B
<b>9W-2</b>	2" (51mm)	6 3/8" (162mm)
<b>9W-3</b>	3" (76mm)	8 1/2" (216mm)
<b>9W-4</b>	4" (102mm)	10 1/2" (267mm)
<b>9W-6</b>	6" (152mm)	14 1/2" (368mm)
<b>9WC-2</b>	2" (51mm)	4 1/16" (103mm)
<b>9WC-3</b>	3" (76mm)	5 3/4" (146mm)
<b>9WC-4</b>	4" (102mm)	7 1/4" (184mm)
<b>9WC-6</b>	6" (152mm)	10 1/4" (260mm)
<b>LPR-2</b>	2" (51mm)	6 3/8" (162mm)
<b>LPR-3</b>	3" (76mm)	8 1/2" (216mm)
<b>LPR-4</b>	4" (102mm)	10 1/2" (267mm)
<b>LPR-6</b>	6" (152mm)	14 1/2" (368mm)
<b>LPRE-2</b>	2" (51mm)	4 1/16" (103mm)
<b>LPRE-3</b>	3" (76mm)	5 3/4" (146mm)
<b>LPRE-4</b>	4" (102mm)	7 1/4" (184mm)
<b>LPRE-6</b>	6" (152mm)	10 1/4" (260mm)
<b>FR-2</b>	2" (51mm)	6 3/8" (162mm)
<b>FR-3</b>	3" (76mm)	8 1/2" (216mm)
<b>FR-4</b>	4" (102mm)	10 1/2" (267mm)
<b>FR-6</b>	6" (152mm)	14 1/2" (368mm)
<b>FRE-2</b>	2" (51mm)	4 1/16" (103mm)
<b>FRE-3</b>	3" (76mm)	5 3/4" (146mm)
<b>FRE-4</b>	4" (102mm)	7 1/4" (184mm)
<b>FRE-6</b>	6" (152mm)	10 1/4" (260mm)

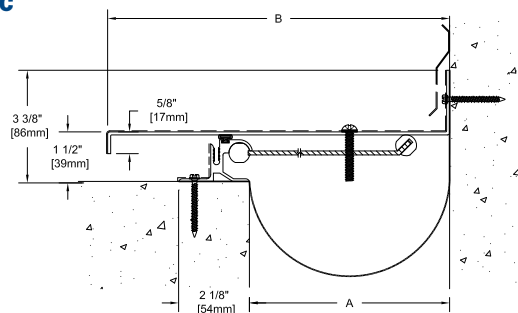
Contact Factory for Larger Joint Sizes  
100% Movement Shown -  
50% Movement Also Available

# ALUMINUM WALL AND ROOF COVERS

## 9W



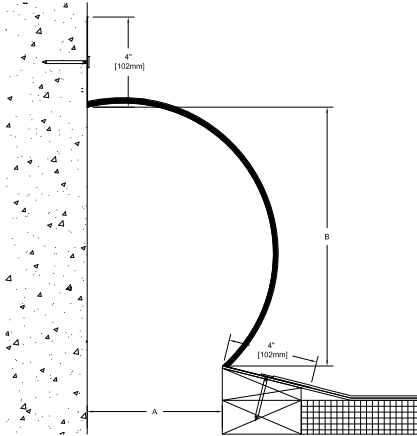
## 9WC



## ROOF BELLOWS

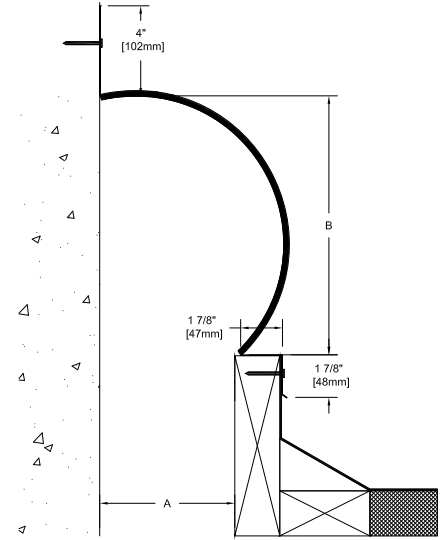
### BRBG-SE

Straight Flange - Roof/Wall



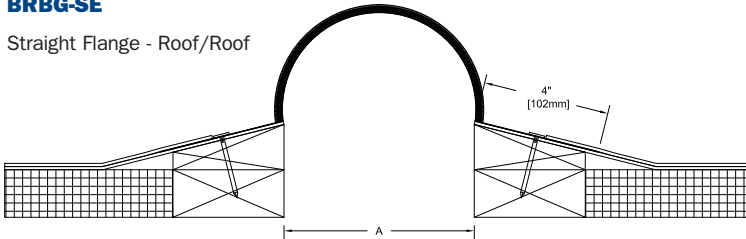
### BRBG-CSE

Curb Flange - Roof/Wall



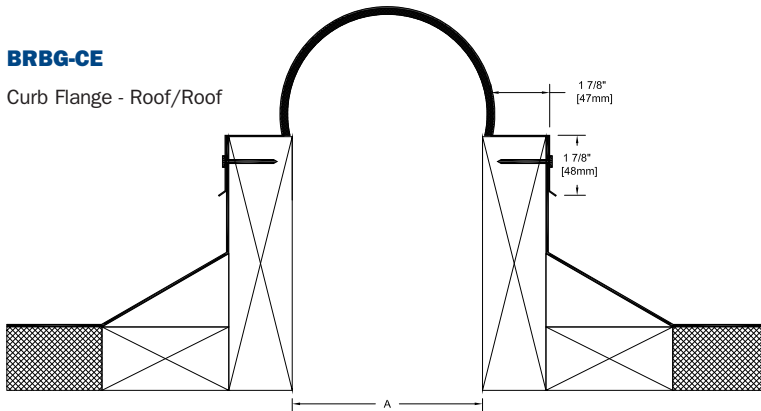
### BRBG-SE

Straight Flange - Roof/Roof



### BRBG-CE

Curb Flange - Roof/Roof



Movement Capabilities - 100% and 50%

Balco's Roof Bellows are Standard Black EPDM (Neoprene Available) with 26ga. Galvanized Flanges.

#### Optional Flange Materials -

Aluminum (A), Copper (C) and Stainless Steel (S)

Contact Factory for Larger Joint Sizes.

#### Roof/Roof Series

Type	A
BRBG-2SE/BRBG-2CE	2" (51mm)
BRBG-4SE/BRBG-4CE	4" (102mm)
BRBG-6SE/BRBG-6CE	6" (152mm)
BRBG-8SE/BRBG-8CE	8" (203mm)

#### Roof/Wall Series

Type	A	B
BRBG-2SE/BRBG-2CSE	2" (51mm)	3 3/4" (95mm)
BRBG-4SE/BRBG-4CSE	4" (102mm)	7 1/2" (191mm)
BRBG-6SE/BRBG-6CSE	6" (152mm)	11 1/2" (292mm)
BRBG-8SE/BRBG-8CSE	8" (203mm)	15 1/4" (387mm)

100% Movement Shown - 50% Movement Also Available

# **DURAFLEX EXTERIOR JOINT SYSTEMS**

---

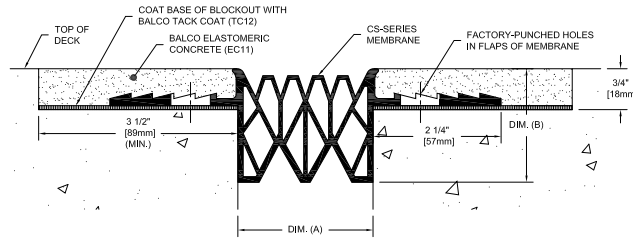
---

# **PARKING GARAGES & OPEN AIR STRUCTURES**

# PARKING GARAGES & OPEN AIR STRUCTURES EXTERIOR EXPANSION JOINT SYSTEMS

## WING CHAMBERED SEAL SYSTEM

### CS

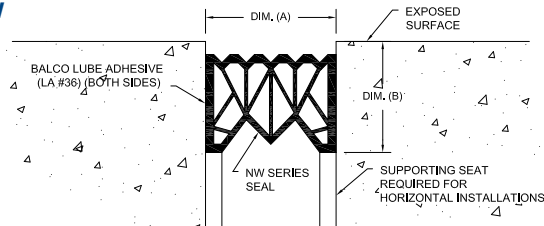


Best suited for installation on exposed top slab decks and intermediate slabs of multi-level garages.

MODEL	MOVEMENT	NOMINAL (A)	MIN (A)	MAX (A)	DIM (B)
CS-250	1 1/2" (38mm)	1 1/2" (38mm)	1" (25mm)	2 1/2" (64mm)	2 (50mm)
CS-325	2" (51mm)	2" (51mm)	1 1/4" (32mm)	3 1/4" (83mm)	2 5/8" (67mm)
CS-400	2 1/2" (64mm)	2 1/2" (64mm)	1 1/2" (38mm)	4" (102mm)	3" (76mm)
CS-500	3 1/4" (83mm)	3" (76mm)	1 3/4" (44mm)	5" (127mm)	3 1/2" (90mm)
CS-600	3 7/8" (98mm)	3 1/2" (89mm)	2 1/8" (54mm)	6" (152mm)	4" (102mm)

## NO WING SEAL SYSTEM

### NW

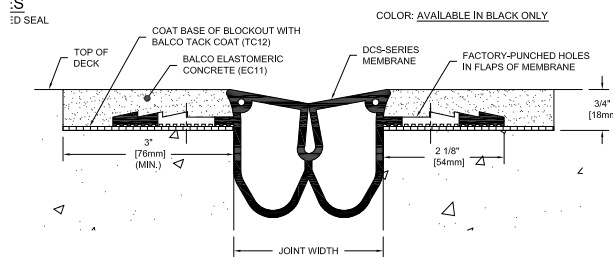


Used to seal most types of small movement expansion joints, both vertical and horizontal.

MODEL	MOVEMENT	MIN (A)	MAX (A)	BLOCKOUT (B)	INSTALLATION WIDTH	
					MIDRANGE	MAXIMUM
NW-250	1 1/4" (32mm)	3/4" (19mm)	2" (51mm)	1 7/8" (48mm)	1 1/4" (32mm)	2" (51mm)
NW-300	1 1/8" (29mm)	1 7/16" (37mm)	2 9/16" (65mm)	2 3/8" (60mm)	2" (51mm)	2 9/16" (65mm)
NW-400	2" (51mm)	1 1/2" (38mm)	3 1/2" (89mm)	3 1/4" (83mm)	2 1/2" (64mm)	3 1/2" (89mm)
NW-500	2 1/2" (64mm)	1 3/4" (44mm)	4 1/4" (108mm)	3 3/4" (95mm)	3" (76mm)	4 1/4" (108mm)
NW-600	3" (76mm)	2" (51mm)	5" (127mm)	4 1/2" (114mm)	3 1/2" (89mm)	5" (128mm)

## DUAL CHAMBERED SEAL SYSTEM

### DCS



Dual-chambered wed design allows for greater movement range and can be used in irregular joint openings.

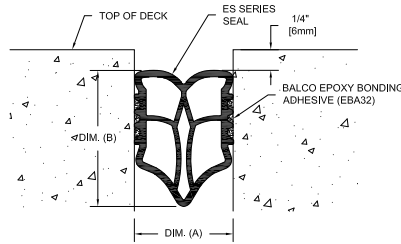
MODEL	INSTALLATION WIDTH			MOVEMENT	
	MINIMUM	PREFERRED	MAXIMUM	MINIMUM	MAXIMUM
DCS-400	1 1/4" (32mm)	2" (51mm)	2 3/4" (70mm)	3/4" (19mm)	4" (102mm)



## ELASTIC SEAL SYSTEM



### ES

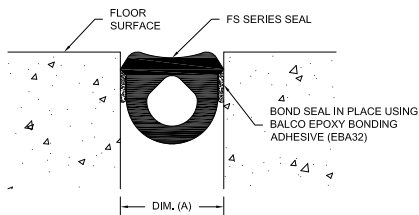


Best suited for installation on exposed top slab decks and intermediate slabs of multi-level garages.

TYPE	ACTUAL SEAL SIZE		NOMINAL JOINT DIMENSIONS		ACTUAL MOVEMENT CAPABILITY		
	WIDTH	DEPTH	WIDTH (A)	DEPTH (B)	MIN (A)	MAX (A)	TOTAL
ES-100	1" (25mm)	1 1/4" (32mm)	1" (25mm)	1 3/4" (44mm)	3/4" (19mm)	1 3/8" (35mm)	5/8" (16mm)
ES-150	1 1/2" (38mm)	1 7/8" (48mm)	1 1/2" (38mm)	2 1/2" (64mm)	1" (25mm)	2" (55mm)	1" (25mm)
ES-200	2" (51mm)	2 1/2" (64mm)	2" (51mm)	3 1/4" (83mm)	1" (25mm)	2 5/8" (67mm)	1 5/8" (41mm)
ES-250	2 1/2" (64mm)	3 1/8" (79mm)	2 1/2" (64mm)	3 3/4" (95mm)	1 3/8" (35mm)	3 1/8" (79mm)	1 3/4" (44mm)
ES-300	3" (76mm)	3 7/8" (98mm)	3" (76mm)	4 1/2" (114mm)	1 5/8" (41mm)	3 3/4" (95mm)	2 1/8" (54mm)

## FLEX SEAL SYSTEM

### FS

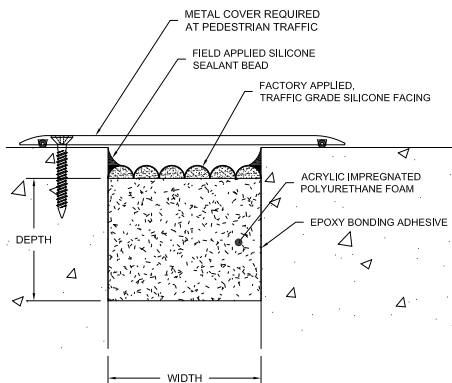


Used to seal most types of small movement expansion joints, both vertical and horizontal.

SYSTEM	INSTALL WIDTH	MINIMUM A	MAXIMUM A	MOVEMENT	SEAL SIZE
FS-100	13/16" (21mm)	7/16" (11mm)	1 1/4" (32mm)	13/16" (21mm)	1" (25mm)
FS-150	1 1/4" (32mm)	5/8" (16mm)	1 7/8" (48mm)	1 1/4" (32mm)	1 1/2" (38mm)
FS-200	1 5/8" (42mm)	7/8" (22mm)	2 1/2" (64mm)	1 5/8" (41mm)	2" (51mm)
FS-250	2" (51mm)	1 1/8" (29mm)	3 1/8" (79mm)	2" (51mm)	2 1/2" (64mm)
FS-300	2 7/16" (62mm)	1 3/8" (35mm)	3 3/4" (95mm)	2 3/8" (60mm)	3" (76mm)
FS-400	3 1/4" (83mm)	1 13/16" (46mm)	5" (127mm)	3 3/16" (81mm)	4" (102mm)

## BALCO COMPRESSION SEAL SYSTEM

### BCFS-SL

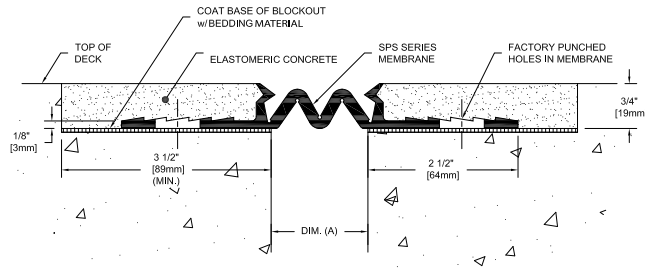


Best Suited for installation on exposed top slab decks and intermediate slabs of multi-level garages.

MODEL	Width	Depth
BCSF-SL-050	1/2" (13mm)	1 1/2" (38mm)
BCSF-SL-062	5/8" (16mm)	1 1/2" (38mm)
BCSF-SL-075	3/4" (19mm)	1 1/2" (38mm)
BCSF-SL-100	1" (25mm)	2" (51mm)
BCSF-SL-125	1 1/4" (32mm)	2" (51mm)
BCSF-SL-150	1 1/2" (38mm)	2 1/2" (64mm)
BCSF-SL-175	1 3/4" (44mm)	2 1/2" (64mm)
BCSF-SL-200	2" (51mm)	3" (76mm)
BCSF-SL-225	2 1/4" (57mm)	3" (76mm)
BCSF-SL-250	2 1/2" (64mm)	3 1/2" (89mm)
BCSF-SL-275	2 3/4" (70mm)	3 1/2" (89mm)
BCSF-SL-300	3" (76mm)	3 1/2" (89mm)
BCSF-SL-325	3 1/4" (83mm)	4" (102mm)
BCSF-SL-350	3 1/2" (89mm)	4" (102mm)
BCSF-SL-375	3 3/4" (95mm)	4" (102mm)
BCSF-SL-400	4" (102mm)	4" (102mm)



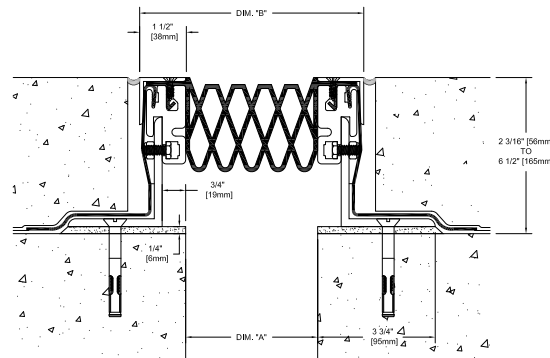
**SINGLE PLY MEMBRANE SYSTEM  
SPS**



Best suited for installation on intermediate slabs of multi-level garages, as well as buried joint applications on garage roof slabs. Also used when joints are located under tennis courts, concrete pads, sidewalks, garden roofs, "green" areas and parking lots.

MODEL	MOVEMENT	NOMINAL (A)	MIN (A)	MAX (A)
<b>SPS-175</b>	2" (51mm)	1 3/4" (44mm)	3/4" (19mm)	2 3/4" (70mm)
<b>SPS-225</b>	2 1/2" (64mm)	2 1/4" (57mm)	1" (25mm)	3 1/2" (89mm)

**SSPD**



**SSPD Alternate Seal**

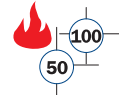


MODEL	MOVEMENT	NOMINAL (A)	MIN (A)	MAX (A)	NOMINAL (B)
<b>SSPD-400</b>	2 1/2" (64mm)	2 1/2" (64mm)	1 1/2" (38mm)	4" (102mm)	5 1/2" (140mm)
<b>SSPD-400D</b>	3 1/4" (83mm)	2 1/2" (64mm)	3/4" (19mm)	4" (102mm)	5 1/2" (140mm)
<b>SSPD-600</b>	3 7/8" (98mm)	3 1/2" (89mm)	2 1/8" (54mm)	6" (152mm)	6 1/2" (165mm)

# PARKING GARAGES AND OPEN AIR STRUCTURES

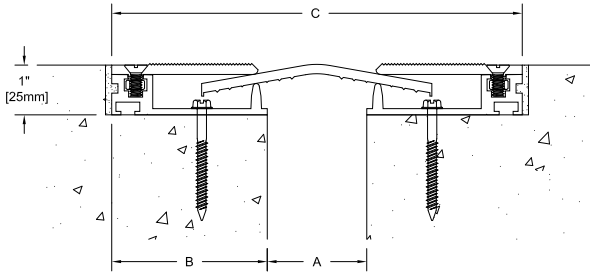
## METAL FLOOR SYSTEMS

### HEAVY DUTY COVERS

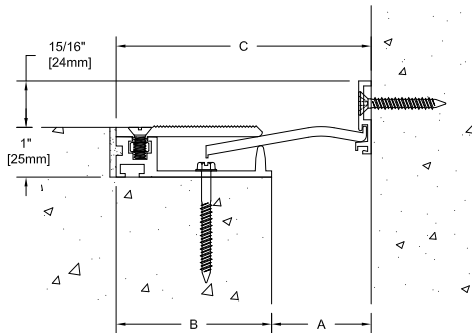


This Heavy Duty System is Available with a Serrated Cover Plate or Plain Cover Plate;  
Specify XH4FS/XH4FVS for Serrated or XH4FP/XH4FVP for Plain.

#### XH4FS

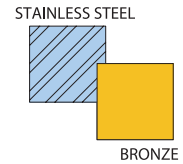


#### XH4FVS



#### OPTIONAL COVER PLATE MATERIALS

XH4FS/XH4FP/XH4FVS/XH4FVP Series Floor Cover are Also Available with Stainless Steel and Architectural Bronze Cover Plates.  
(Base Members are Aluminum Extrusions)  
Specify SSXH4FS/SSXH4FP/SSXH4FVS/SSXH4FVP for Stainless Steel, BXH4FS/BXH4FP/BXH4FVS/BXH4FVP for Bronze.



#### FEATURES

- Sliding Aluminum Center Plate with Aluminum Side Cover Plate - Standard Mill Finish
- Extruded Aluminum Sub-Channel (6063-TS) - Standard Mill Finish
- Cast-In Anchors - Standard (Blockout Anchors - Optional)

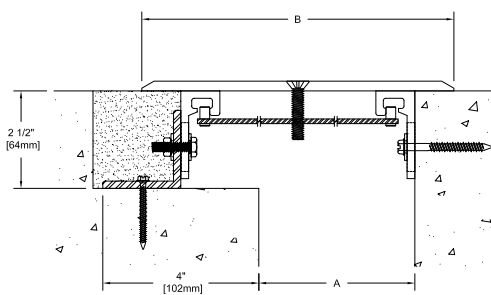
Available as 2 Hour Rated System - Balco Fire Barrier Systems are Tested in Accordance with ASTM E 1966 and are Listed with UL, WH or Omega Point Laboratories, Inc. (Contact Balco for Additional Fire Ratings)



Movement Capabilities - 100% and 50%

#### HDNE - NEW TO EXISTING

Floor to Wall System  
Also Available. Specify HDNEL.



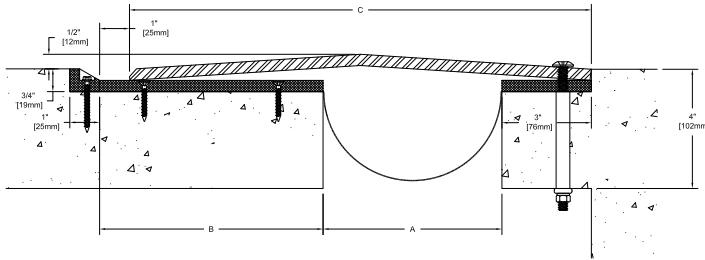
#### Notes:

1. Loads are based on 6063-T5 aluminum.
2. Concentrated load is applied to a 2" (51mm) diameter circle.
3. 1 kN = 1000 newtons

#### Extra-Heavy Duty Series

Type	A	B	C	Movement	Max. Concentrated Load for Joint in Neutral Position
<b>XH4FS-1</b>	1" (25mm)	2 1/8" (54mm)	5 1/4" (133mm)	+/- 1" (25mm)	1900 lbs. 8.45 kN
<b>XH4FS-1-2</b>	2" (51mm)	2 1/8" (54mm)	6 1/4" (159mm)	+/- 1" (25mm)	1360 lbs. 6.05 kN
<b>XH4FS-2</b>	2" (51mm)	3 1/8" (79mm)	8 1/4" (210mm)	+/- 2" (51mm)	1540 lbs. 6.85 kN
<b>XH4FS-3</b>	3" (76mm)	4 9/16" (116mm)	1'-0 3/16" (310mm)	+/- 3" (76mm)	1500 lbs. 6.67 kN
<b>XH4FS-4</b>	4" (102mm)	5 9/16" (141mm)	1'-3 3/16" (386mm)	+/- 4" (102mm)	1500 lbs. 6.67 kN
<b>XH4FVS-1</b>	1" (25mm)	2 1/8" (54mm)	3 1/8" (79mm)	+/- 1/2" (13mm)	1900 lbs. 8.45 kN
<b>XH4FVS-1-2</b>	2" (51mm)	2 1/8" (54mm)	4 1/8" (105mm)	+/- 1/2" (13mm)	1360 lbs. 6.05 kN
<b>XH4FVS-2</b>	2" (51mm)	3 1/8" (79mm)	5 1/8" (130mm)	+/- 1" (25mm)	1540 lbs. 6.85 kN
<b>XH4FVS-3</b>	3" (76mm)	4 9/16" (116mm)	1'-0 3/16" (310mm)	+/- 1 1/2" (38mm)	1500 lbs. 6.67 kN
<b>XH4FVS-4</b>	4" (102mm)	5 9/16" (141mm)	1'-3 3/16" (386mm)	+/- 2" (51mm)	1500 lbs. 6.67 kN

**HPG**



**FEATURES**

- 3/8" (10mm) Hot-Dipped Galvanized Steel Cover Plate
- Neoprene Pad with UHMW Polyethylene Nosing
- EPDM Water Barrier - Optional

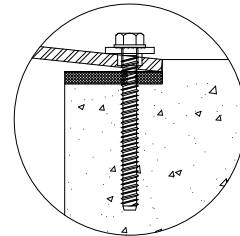
Available as 2 Hour Rated System - Balco Fire Barrier Systems are Tested in Accordance with ASTM E 1966 and are Listed with Omega Point Laboratories, Inc. (Contact Balco for Additional Fire Ratings)



Movement Capabilities - 100% and 50%

**Parking Garage Series**

Type	A	B	C	Movement	Max. Concentrated Load for Joint in Full Open Position
<b>HPG375-2</b>	2" (51mm)	3 1/2" (89mm)	7 1/2" (191mm)	+/- 2" (51mm)	2228 lbs. 9.91 kN
<b>HPG375-4</b>	4" (102mm)	5 1/2" (140mm)	11 1/2" (292mm)	+/- 4" (102mm)	1926 lbs. 8.57 kN
<b>HPG375-6</b>	6" (152mm)	7 1/2" (191mm)	15 1/2" (394mm)	+/- 6" (152mm)	1755 lbs. 7.81 kN
<b>HPG375-8</b>	8" (203mm)	9 1/2" (241mm)	19 1/2" (495mm)	+/- 8" (203mm)	1642 lbs. 7.30 kN
<b>HPG375-10</b>	10" (254mm)	11 1/2" (292mm)	21 1/2" (597mm)	+/- 10" (254mm)	1558 lbs. 6.93 kN
<b>HPG375-12</b>	12" (305mm)	13 1/2" (343mm)	27 1/2" (699mm)	+/- 12" (305mm)	1494 lbs. 6.65 kN
<b>HPG375-14</b>	14" (356mm)	15 1/2" (394mm)	31 1/2" (800mm)	+/- 14" (356mm)	1416 lbs. 6.30 kN
<b>HPG375-16</b>	16" (406mm)	17 1/2" (445mm)	35 1/2" (902mm)	+/- 16" (406mm)	1123 lbs. 5.00 kN
<b>HPG375-18</b>	18" (457mm)	19 1/2" (495mm)	39 1/2" (1003mm)	+/- 18" (457mm)	912 lbs. 4.06 kN



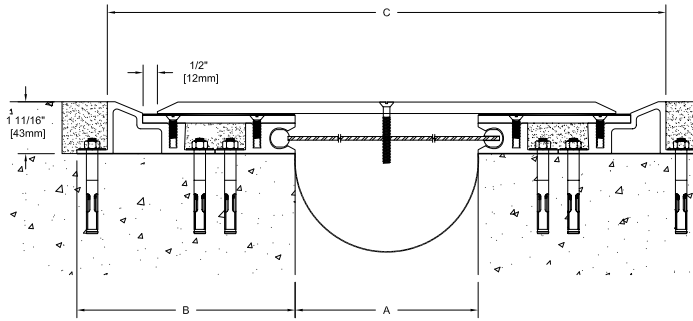
**RETRO-FIT OPTION**

Notes:

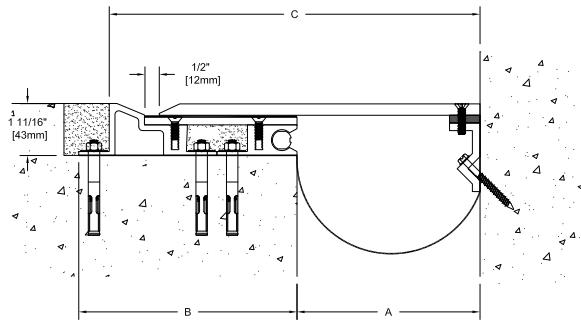
1. Loads are based on galvanized steel plate.
2. Concentrated load is applied to a 2" (51mm) diameter circle.
3. 1 kN = 1000 newtons

**PARKING GARAGES AND OPEN AIR STRUCTURES**  
**METAL FLOOR SYSTEMS**  
**HEAVY DUTY COVERS**

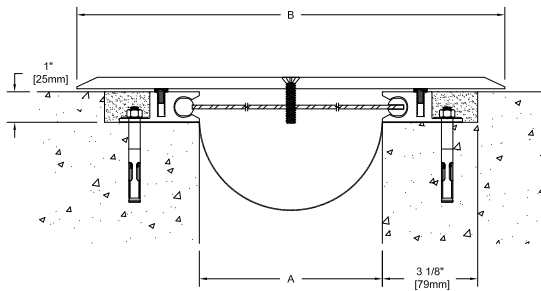
**SCPQ**



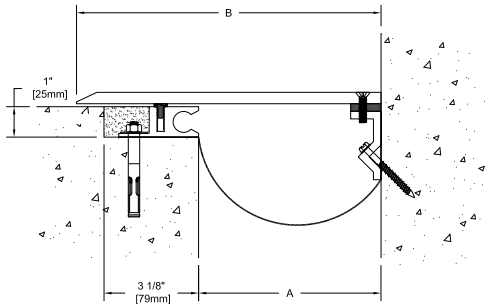
**SCPQL**



**SMPQ**



**SMPQL**



**Heavy Duty Parking Garage System**

Type	A	B	C
SCPQ-2	2" (51mm)	7 1/8" (181mm)	14 5/16" (364mm)
SCPQ-4	4" (102mm)	7 1/8" (181mm)	16 5/16" (414mm)
SCPQ-6	6" (152mm)	7 1/8" (181mm)	18 5/16" (465mm)
SCPQ-8	8" (203mm)	7 5/8" (194mm)	21 5/16" (541mm)
SCPQ-10	10" (254mm)	8 5/8" (219mm)	25 5/16" (643mm)
SCPQ-12	12" (305mm)	9 5/8" (244mm)	29 5/16" (745mm)
SCPQ-14	14" (356mm)	10 5/8" (270mm)	33 5/16" (846mm)
SCPQ-16	16" (406mm)	11 5/8" (295mm)	37 5/16" (948mm)
SCPQ-18	18" (457mm)	12 5/8" (321mm)	41 5/16" (1046mm)
SCPQL-2	2" (51mm)	7 1/8" (181mm)	8 3/16" (208mm)
SCPQL-4	4" (102mm)	7 1/8" (181mm)	10 3/16" (259mm)
SCPQL-6	6" (152mm)	7 1/8" (181mm)	12 3/16" (310mm)
SCPQL-8	8" (203mm)	7 5/8" (194mm)	14 11/16" (373mm)
SCPQL-10	10" (254mm)	8 5/8" (219mm)	17 11/16" (450mm)
SCPQL-12	12" (305mm)	9 5/8" (244mm)	20 11/16" (525mm)
SCPQL-14	14" (356mm)	10 5/8" (270mm)	23 11/16" (602mm)
SCPQL-16	16" (406mm)	11 5/8" (295mm)	26 11/16" (678mm)
SCPQL-18	18" (457mm)	12 5/8" (321mm)	29 11/16" (754mm)

100% Movement - 50% Available

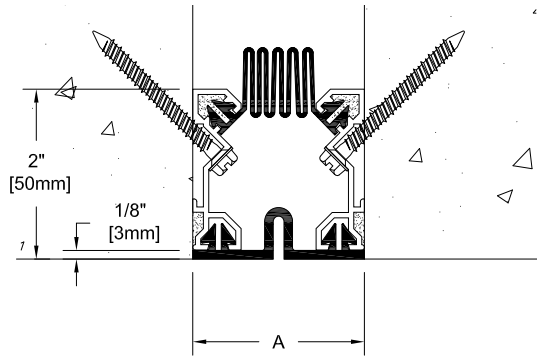
Type	A	B
SMPQ-2	2" (51mm)	6" (152mm)
SMPQ-4	4" (102mm)	10" (254mm)
SMPQ-6	6" (152mm)	14" (356mm)
SMPQ-8	8" (203mm)	18" (457mm)
SMPQ-10	10" (254mm)	22" (559mm)
SMPQ-12	12" (305mm)	26" (660mm)
SMPQ-14	14" (356mm)	28" (711mm)
SMPQ-16	16" (406mm)	34" (864mm)
SMPQ-18	18" (457mm)	38" (965mm)
SMPQL-2	2" (51mm)	7" (179mm)
SMPQL-4	4" (102mm)	10" (254mm)
SMPQL-6	6" (152mm)	13" (330mm)
SMPQL-8	8" (203mm)	16" (406mm)
SMPQL-10	10" (254mm)	19" (483mm)
SMPQL-12	12" (305mm)	22" (559mm)
SMPQL-14	14" (356mm)	25" (635mm)
SMPQL-16	16" (406mm)	28" (711mm)
SMPQL-18	18" (457mm)	7" (179mm)

100% Movement - 50% Available

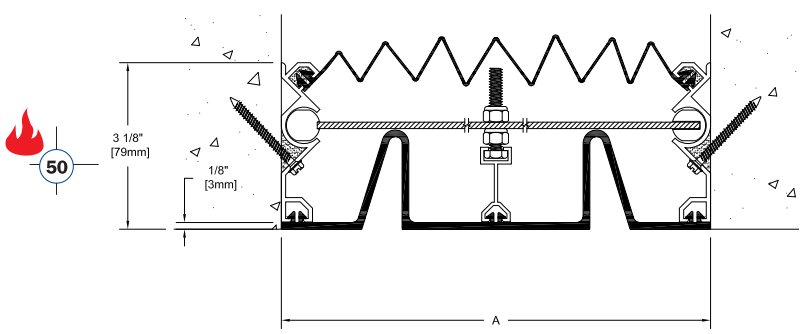
# EXTERIOR FLAT SEAL SYSTEM



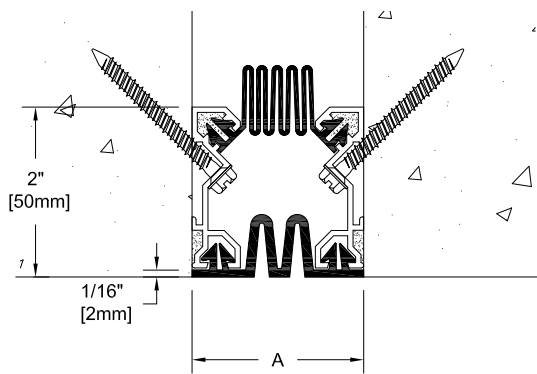
**FCWW (2" - 6" JOINTS)**  
(51mm - 152mm)



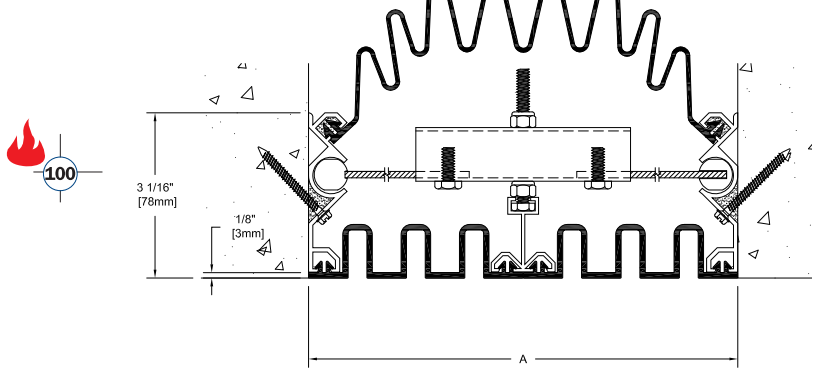
**FCWW (7" - 10" JOINTS)**  
(178mm - 254mm)



**FCVS (2" - 6" JOINTS)**  
(51mm - 152mm)



**FCVS (7" - 10" JOINTS)**  
(178mm - 254mm)

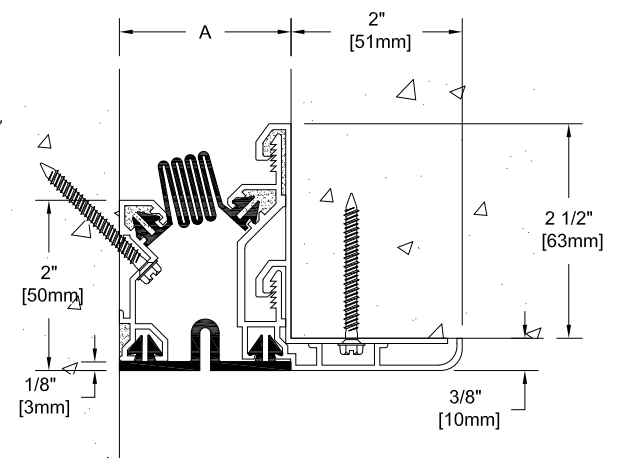


## Flexible Inserts

Type	A
FCWW/FCVS/FCWWE/FCVSE-2	2" (51m)
FCWW/FCVS/FCWWE/FCVSE-3	3" (76m)
FCWW/FCVS/FCWWE/FCVSE-4	4" (102m)
FCWW/FCVS-5	5" (127m)
FCWW/FCVS-6	6" (152m)
FCWW/FCVS-8	8" (203m)
FCWW/FCVS-9	9" (229m)
FCWW/FCVS-10	10" (254m)
FCWW/FCVS-12	12" (305m)

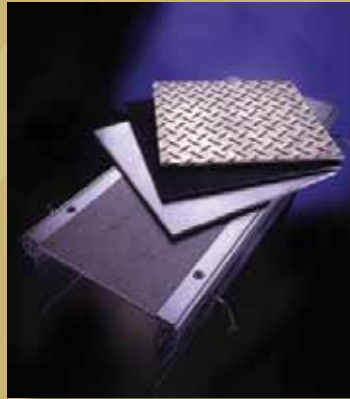
Specify FCWW/FCWWE for 50% Movement  
Specify FCVS/FCVSE for 100% Movement

## FCWWE-2





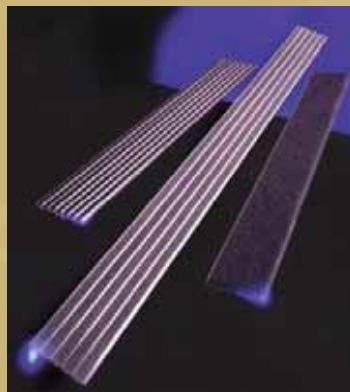
Quality products engineered and crafted to meet tomorrow's needs today... Over 50 years in the business is proof that we stand behind those words. Balco has set an industry benchmark with our combination of highly skilled engineers, manufacturing processes, and drafting designs. We customize our products to fit your projects' needs. At Balco, we're dedicated to bringing you the highest quality products at competitive prices. Let us be an integral part of your next project.



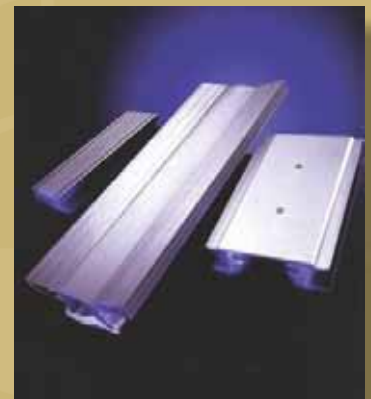
TRENCH & ACCESS COVERS



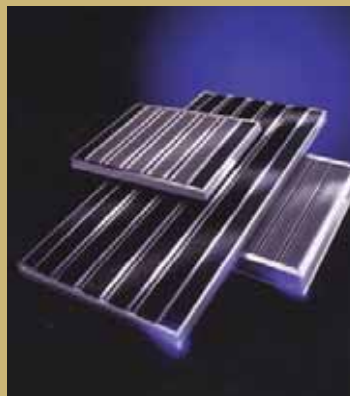
EGRESS



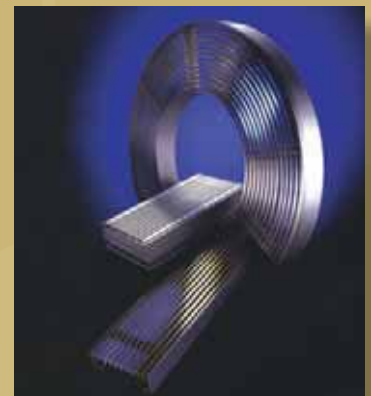
STAIR NOSINGS



EXPANSION JOINT COVERS



ENTRANCE MATTING SYSTEMS



GRATES & FRAMES

ISO 9001:2000 CERTIFIED



**BALCO INC**

1.800.767.0082 [www.balcousa.com](http://www.balcousa.com)



EXTERIOR EXPANSION JOINT SEALS

BAL-EJC / 0408 ©