



2015 PRODUCT CATALOG



THE GLADIATOR BRAND ADVANTAGE

Whether you use your garage for parking the cars, working on projects or entertaining, Gladiator brand helps you make it what you want it to be.

Ultimate Versatility

Our versatile products help create the most complete organization system. They work together so you can get the most out of your garage—floor to ceiling, wall to wall.

Heavy-Duty Steel Construction

Gladiator® cabinets and modular storage products feature welded steel construction that ensures outstanding performance in any environment.

Hassle-Free Warranty

We're so confident in Gladiator brand that we offer warranties just as strong as our gear. Most of our products are backed by at least a 10-year limited warranty. In addition, select models are backed with a lifetime limited warranty.*

*For complete product and warranty details visit GladiatorGW.com.





Did you know?

GLADIATOR BRAND HAS A
**98% CUSTOMER
SATISFACTION RATING***

*Whirlpool Corporation proprietary research, January 2006.

TRANSFORM YOUR GARAGE IN THREE EASY STEPS

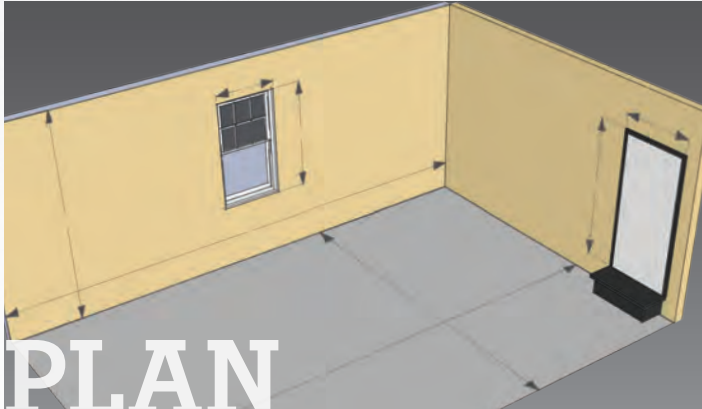


The only way to really know what lurks in your garage is to remove all the items inside. Yes, everything. This forces you to make a storage decision on every item.

Keep items you'll move back into the garage.

Donate or sell items that can be given to friends, online donation sites or community charities, or sold at a garage sale or online.

Toss items you simply don't use or that are damaged beyond repair.



Measure your space. It's important to get your exact dimensions including:

- Front, back and side walls
- Size and location of windows and doors, including doorstep
- Location of studs, stairs, outlets and switches
- Floorspace and space occupied by your car(s)

Our **Gladiator® GarageWorks Design Studio** tool can help. Visit Studio.GladiatorGarageWorks.com to get started.



Create a wall organization system

Using your walls for storage is a smart way to get gear up off the floor and maximize space to transform your garage into an area you can actually use.

Protect your garage floor

A covered garage floor is easier to install than you might think and adds style and protection, too.

Choose the right cabinets

Storage cabinets are an excellent choice when you want to clear items from the floor and keep them safely hidden behind closed doors.



PERSONALIZED SOLUTIONS

From wall systems to cabinets, and flooring to appliances, Gladiator brand has a premium solution to help make your garage your own, transforming the space with a uniform look.



Table of Contents

- 12 Cabinets
- 22 Hanging Wall Systems
- 26 Hooks & Wall Accessories
- 36 Shelving
- 40 Workbenches
- 44 Appliances
- 48 Tool Storage
- 52 Flooring

FROM SMALL SPACES TO LARGE



Easily repositionable cabinets and wall systems offer solutions for every garage. The Gladiator® system grows with you to fit your life and style. You can even choose to take it with you if you sell your house or leave it to add value to the home.



Did you know?

88% of real estate agents agree that a well-organized garage shows pride in a home.*

*Braun Research survey, January 2014.

WHAT'S NEW



All-Season GearCloset and GearRod Accessory

Hang bulky jackets, hunting gear, motorcycle wear and more in the new All-Season GearCloset with our newest accessory, the hanging GearRod (also available separately).



77" Rack Shelving

The new 77" Rack Shelving unit features a heavy-duty load capacity of 2,000 pounds per shelf and a tool-free design that makes setup fast and easy.



Licensed Collegiate PrimeTime™ Locker

Perfect for the garage, home gym or basement, this welded steel locker shows your school pride with the officially licensed logo and colors of your favorite team. See page 18 for available schools.



Racing Red and Everest White Options

Make a design statement with the durability of welded steel. Cabinets available in Classic Silver, Racing Red and Everest White hide your stuff, not your style.







GARAGE CABINETS

Gladiator® cabinets and modular storage products feature welded steel construction and a unique tread plate design that highlights their durability. It's easy to customize your layout with wall boxes that reposition on our wall systems and modular cabinets that roll on casters.

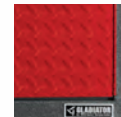
Color Key:



Classic Silver – Hammered granite cabinet with silver tread plate door



Everest White – Hammered white cabinet with smooth slate door



Racing Red – Hammered granite cabinet with red tread plate door



Mobile Storage Cabinet – GALG36CKXG



GladiatorGW.com (43 Reviews) November, 2014

"I liked the first 2 so much I bought 3 more... to give my garage a nice uniform look. The assembly process is well thought out and makes assembling the boxes a snap."



TWO WAYS TO STORE



PREMIER SERIES

- Thick Heavy-Duty Steel
- Welded Steel Construction
- Pre-assembled



READY-TO-ASSEMBLE SERIES

- Heavy-Duty Steel
- Easy-to-Assemble Construction
- Durability at an affordable price

OR



*For complete product and warranty details visit GladiatorGW.com.

PREMIER SERIES CABINETS

See page 20
for interior views
of select models.

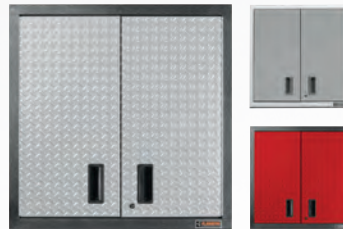
☆☆☆☆☆☆☆☆
STEEL-WELDED IN THE U.S.A.



24" Wall GearBox

GAWG241DRG – Classic Silver
GAWG241DDR – Racing Red

- Adjustable shelf
- Reversible door
- 24" W × 24" H × 12" D
- 150-lb cabinet capacity
- 50-lb shelf capacity



30" Wall GearBox

GAWG302DRG – Classic Silver
GAWG302DZW – Everest White
GAWG302DDR – Racing Red

- Two adjustable shelves
- Locking tread plate doors
- 30" W × 30" H × 12" D
- 200-lb cabinet capacity
- 50-lb shelf capacity



Modular GearBox

GAGB272DRG – Classic Silver
GAGB272DZW – Everest White
GAGB272DDR – Racing Red

- Full-extension shelf
- Bucket-top design
- 28" W × 34.5" H × 25" D
- 1,400-lb cabinet capacity
- 65-lb shelf capacity

UNIVERSAL FEATURES

Heavy-Duty Welded Steel Construction | Hammered Finish | Extra-Deep Storage Capacity
Hassle-Free Lifetime Limited Warranty* | Heavy-Duty Rubber Casters**



Modular GearDrawer

GAGD275DRG – Classic Silver
GAGD275DZW – Everest White
GAGD275DDR – Racing Red

- Five full-extension drawers
- Bucket-top design
- 28" W × 34.5" H × 25" D
- 1,400-lb cabinet capacity
- 65-lb drawer capacity



Tall GearBox

GATB302DRG – Classic Silver
GATB302DZW – Everest White
GATB302DDR – Racing Red

- Fixed shelf
- Two adjustable shelves
- 30" W × 66" H × 18" D
- 300-lb cabinet capacity
- 50-lb shelf capacity



Tall GearLocker

GATL302DRG – Classic Silver

- Divided storage space
- Four adjustable shelves
- 30" W × 66" H × 18" D
- 300-lb cabinet capacity
- 50-lb shelf capacity

*For complete product and warranty details visit GladiatorGW.com. **Floor cabinets only.

READY-TO-ASSEMBLE SERIES CABINETS

See page 20
for interior views
of select models.



3/4-Door Wall GearBox

GAWG28KDWG –
Classic Silver

- Full-width adjustable shelf
- Open bottom shelf
- 28" W × 28" H × 12" D
- 150-lb cabinet capacity
- 40-lb shelf capacity



Full-Door Wall GearBox

GAWG28FDYG –
Classic Silver

- Two adjustable shelves
- Six possible shelf placements
- 28" W × 28" H × 12" D
- 150-lb cabinet capacity
- 40-lb shelf capacity



3/4-Door Modular GearBox

GAGB28KDYG –
Classic Silver

- Full-width adjustable shelf
- Ball-bearing slide drawer
- Optional caster kit
- 28" W × 31" H × 18" D
- 150-lb cabinet capacity
- 40-lb shelf/drawer capacity



3-Drawer Modular GearBox

GAGD283DYG –
Classic Silver

- Three 8.75" deep drawers
- Bucket-top design
- 28" W × 31" H × 18" D
- 150-lb cabinet capacity
- 40-lb drawer capacity



Full-Door Modular GearBox

GAGB28FDYG –
Classic Silver

- Fixed shelf
- Full-width adjustable shelf
- Optional caster kit
- 28" W × 31" H × 18" D
- 150-lb cabinet capacity
- 40-lb shelf capacity

UNIVERSAL FEATURES

Heavy-Duty Steel Construction | Hammered Finish | Easy-to-Assemble Design
Leveler Legs* | Hassle-Free 10-Year Limited Warranty**



Large GearBox

GALG36KDYG –
Classic Silver

- Fixed shelf
- Two adjustable shelves
- 36" W × 72" H × 18" D
- 225-lb cabinet capacity
- 45-lb shelf capacity



Jumbo GearBox

GAJG36FDYG –
Classic Silver
GAJG36FDZW –
Everest White

- Extra-deep cabinet space
- One fixed shelf, two adjustable shelves
- 36" W × 72" H × 24" D
- 300-lb cabinet capacity
- 50-lb shelf capacity



All-Season GearCloset

GAJG36GRDG –
Classic Silver

- Extra-deep cabinet space
- Two adjustable shelves and hanging rod
- 36" W × 72" H × 24" D
- 300-lb cabinet capacity
- Hanging rod holds up to 90 lbs



Mobile Storage Cabinet

GALG36CKXG –
Classic Silver

- Three adjustable shelves
- Front and rear casters
- 36" W × 66" H × 18" D
- 225-lb cabinet capacity
- 45-lb shelf capacity



Extra Large GearBox

GAJG48KDYG –
Classic Silver
GAJG48KDZW –
Everest White

- Extra-wide cabinet space
- Fixed shelf
- Two adjustable shelves
- 48" W × 72" H × 18" D
- 250-lb cabinet capacity
- 50-lb shelf capacity

*Floor cabinets only. **For complete product and warranty details visit GladiatorGW.com.



PRIMETIME™ LOCKERS

UNIVERSAL FEATURES

Licensed Collegiate Team Logo and Colored Door | Welded Steel with Hammered Granite Finish
Integrated Three-Digit Combination Lock | Anti-Tip Bracket Included | Hassle-Free Lifetime Limited Warranty*



Auburn University
GASL1AUBDG



Louisiana State
University
GASL1LSUDG



Michigan State
University
GASL1MSUDG



Pennsylvania
State University
GASL1PSUDG



Texas A&M
University
GASL1TAMDG



University of
Alabama
GASL1UALDG



University of
Arkansas
GASL1UARDG



University of
Florida
GASL1UFLDG



University of
Georgia
GASL1UGADG



University of
Kentucky
GASL1UKYDG



University of
Michigan
GASL1UOMDG



University of
Nebraska
GASL1UNEDG



University of
North Carolina
GASL1UNC DG



University of
Notre Dame
GASL1NDUDG



University of
Oklahoma
GASL1UOKDG



University of
South Carolina
GASL1SCUDG



University of
Tennessee
GASL1UTNDG



University of Texas
GASL1UTXDG



University of
Wisconsin
GASL1UWIDG



*For complete product and warranty details, visit GladiatorGW.com.



30" Wall GearBox

(Shown: GAWG302DRG)



24" Wall GearBox

(Shown: GAWG241DRG)



Modular GearBox

(Shown: GAGB272DRG)



Modular GearDrawer

(Shown: GAGD275DRG)



Tall GearBox
(Shown: GATB302DRG)



Tall GearLocker
(Shown: GATL302DRG)



**All Season
GearCloset**
(Shown: GAJG36GRDG)



PrimeTime™ Locker
(Shown: GASL1NDUDG)

HANGING WALL SYSTEMS

Using your walls for storage is a great way to get gear off the floor and maximize space. Gladiator® hanging wall systems are patented “slat wall” style tracks made for hanging our hooks, cabinets, baskets and bins.



GearWall® Panels (2-Pack) - GAWP082PBY



GladiatorGW.com (2 Reviews) November, 2014

“These 1 foot wide 8 feet long tongue and groove panels are light, easy to use, and easy to install. The accessories attach easily.”





GearTrack® Channels (2-Pack)

GAWC042PZY

- Select-area coverage
- Mounts on bare wood studs or drywall over wood studs
- 48" W × 6" H × 0.75" D
- Each pack includes 2 GearTrack® Channels







HOOKS & WALL ACCESSORIES

From bicycles to rakes and shovels, store even more items on our extended line of unique hooks. Plus, all of our hooks, baskets and bins lock securely in place and can be easily repositioned on both GearTrack® Channels and GearWall® Panels.

HOOKS & WALL ACCESSORIES



Big Hook

GAWUXXBHRH

Great for weed trimmers and leaf blowers



Cradle Hook

GAWUXXCRLH

Great for hoses and electrical cords



Deep Hook

GAWUXXDHRH

Great for ladders, hoses and sawhorses



Dual Hook

GAWUXXWHRH

Great for wheelbarrows and lawn chairs



Twin Hook

GAWUXXTWRH

Great for long-handled tools and paddles



Utility Hook

GAWUXXUHRH

Great for sledgehammers and lawn chairs



J & L Hooks

GAWAJL8PPH

Great for small tools



Loop Hook

GAWALP8PPH

Great for small tools



S Hook

GAWUXXSHRH

Great for brooms, rakes and snow shovels



Scoop Hook

GAWUXXSCRH

Great for long-handled tools and lawn chairs



Storage Bin Holder

GAWUXXBMRH

Great for bulky storage and recycle bins



Tool Hook

GAWUXXTHRH

Great for shovels, rakes and rackets

HOOKS & WALL ACCESSORIES



Gladiator Claw™ V3.0 Advanced Bike Storage

GAWUXXCPVK

Great for hanging bikes on wall for easy access



Horizontal Bike Hook

GAWUXXHBTG

Great for securing a bike parallel to the wall



Vertical Bike Hook

GAWUXXVBRH

Great for securing a bike perpendicular to the wall



Wide Hook

GAWUXXWDRH

Great for leaf rakes and difficult-to-hang items



Fishing Pole Holder

GAWVXXFHTH

Great for fishing poles



Wire Basket

GAWU18BKBH

Great for gardening supplies and sporting gear



Small Item Bins

GAWESB6PSM

Great for nails and screws



Ball Caddy

GAWUXBLTH

Great for up to nine full-size basketballs



Clean-Up Caddy

GAWU12CCTG

Great for paper towels and cleaning supplies



24" Mesh Basket

GAWM24MBRH

Great for athletic equipment



Golf Caddy

GAWUXGFTG - Granite
GAWUXGFZW - Everest White

Great for golf bags, balls and shoes



Project Caddy

GAWUXPTTG

Great for auto and home improvement supplies



ORGANIZATION KITS

Organizing spaces in your home can be tough, but our kits provide a simple solution to every kind of storage problem. Starter kits include our GearTrack® Channels and everything you need to get tools and sporting gear off the floor, while accessory kits add even more flexibility to your current wall system.

Visit GladiatorGW.com for our newest kits and customize your space today.





GLADIATOR



GLADIATOR

© 2014 Gladiator

GLADIATOR
BY CLAD GROUP, INC.

STARTER KITS

Whether you're hanging a few tools or reconfiguring your entire garage, Gladiator brand offers what you need, all in one easy-to-install package. Each Starter Kit includes all GearTrack® Channels, hooks and accessories shown.



GearTrack® Pack Deluxe

GAGP32K1DY

This all-in-one kit contains virtually everything needed to start a garage organization project. Includes four 32" GearTrack® Channels, eight end caps and color-matched screws.

GearTrack® Pack

GAGPUB2PPY

Enjoy eight linear feet of storage space with this all-in-one starter kit that helps you stay organized. Includes two 48" GearTrack® Channels, two end caps and color-matched screws.

GearTrack® Pack Duo

GAGP32G1WY

Gives you a variety of hooks to start your garage organization project, plus two 32" GearTrack® Channels, four end caps and color-matched screws.

ACCESSORY KITS

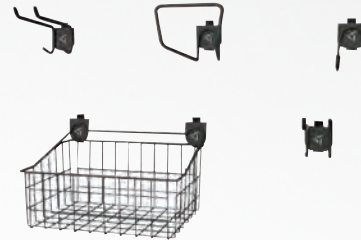
Add even more versatility to your current Gladiator® wall system with your choice of Accessory Kits. Each kit includes all hooks and accessories shown.



Accessory Starter Kit 1

GAWA24SKRH

Combines a mesh basket, multiple bins and hooks to clear up clutter and organize hardware and tools.



Accessory Starter Kit 2

GAWA18SKRH

Features a wire basket and four of our most popular hooks to help meet a range of storage needs.



SHELVING

Gladiator brand shelving options are a great way to easily store your gear while keeping it completely accessible. Choose between our innovative GearLoft™ Shelf, our Solid Shelves or our latest 77" Rack Shelving addition.



77" Rack Shelving - GARS774SZG



GladiatorGW.com (25 Reviews) November, 2014

"Very solid and sturdy shelving. Easy installation, nice looking, and the shelving is strong."

SHELVING



77" Rack Shelving

GARS774SZG

- Hassle-free lifetime limited warranty*
- No tool or hardware assembly
- 2,000-lb shelf capacity
- Four full-width shelves
- NSF® certified for food storage
- 77" W x 72" H x 24" D



30" Shoe Rack

GAWM30SRRH

- Great for shoes, boots and in-line skates
- 30" W x 5.5" H x 15" D



24" Wire Shelf

GAWM24WSRH

- Great for grass seed and gardening tools
- 24" W x 4.5" H x 12.5" D



30" Solid Shelf

GAWA30SFRG – Granite
GAWA30SFZW – Everest White

- Great for cleaners and automotive fluids
- 30" W x 2.5" H x 12" D



48" Solid Shelf

GAWA48SFRG – Granite
GAWA48SFZW – Everest White

- Keeps frequently used items off the floor
- 48" W x 2.5" H x 12" D

45" GearLoft™ Shelf

GAWA45SFTG – Granite
GAWA45SFZW – Everest White

- Stores bulky items high on the wall
- Dual installation for storage versatility
- 45" W x 16" H x 20" D



 **GLADIATOR**
by Whirlpool Corporation



WORKBENCHES

Strong, versatile workbenches ensure you'll always have a sturdy foundation to build upon. Choose between our tried and true maple or trendy and durable bamboo for a top made from all-natural, renewable resources. All Gladiator® workbenches allow for docking space underneath and adjustability when needed.

6' Adjustable Height Workbench - GAWB06MTZG



GladiatorGW.com (24 Reviews) November, 2014

"This is absolutely the best workbench made. It is everything you're looking for in a workbench. Thank you, Gladiator! Job well done!"

WORKBENCHES



4' Adjustable Height Workbench

GAWB04MTZG – Granite with Maple
GAWB04BAZG – Granite with Bamboo

- Adjusts to meet ADA height requirements
- 48" W x 28"– 42" H x 24" D
- 1.75" thick table surface
- Can support up to 3,000 lbs



6' Adjustable Height Workbench

GAWB06MTZG – Granite with Maple
GAWB06BAZG – Granite with Bamboo
GAWB06BAZW – Everest White with Bamboo

- Adjusts to meet ADA height requirements
- 72" W x 28"– 42" H x 24" D
- 1.75" thick table surface
- Can support up to 3,000 lbs



8' Adjustable Height Workbench

GAWB08MTZG – Granite with Maple
GAWB08BAZG – Granite with Bamboo
GAWB08BAZW – Everest White with Bamboo

- Adjusts to meet ADA height requirements
- 96" W x 28"– 42" H x 24" D
- 1.75" thick table surface
- Can support up to 3,000 lbs

UNIVERSAL FEATURES

1-Year Limited Warranty* on Wood Top | Hassle-Free Lifetime Limited Warranty* on Adjustable Legs & Steel Frame | Leveling Legs | UV Cured Protective Coating | Solid Wood Top



Workbench Powerstrip

GAAC68PSXG – Granite
GAAC68PSZW – Everest White

- Seven outlets on front, two on back
- Fits 6' or 8' workbenches



66.5" Bamboo Modular Workbench

GAWB66BAWG – Granite

- Fits any combination of two Ready-To-Assemble Series Modular GearBoxes
- 66.5" W x 38.75" H x 20" D
- 1.5" thick table surface
- Can support up to 300 lbs



73" Bamboo Modular Workbench

GAWB73BAXG – Granite

- Fits any combination of two Ready-To-Assemble Series Modular GearBoxes
- 73" W x 39" H x 23" D
- 1.5" thick table surface
- Can support up to 750 lbs

*For complete product and warranty details, visit GladiatorGW.com.



APPLIANCES

Engineered by appliance leader Whirlpool Corporation, Gladiator® appliances are the only ones built with premium designs and innovative, garage-specific features. This results in effective and efficient operation in the extreme heat or cold of harsh garage conditions.

APPLIANCES



Chillerator® Garage Refrigerator

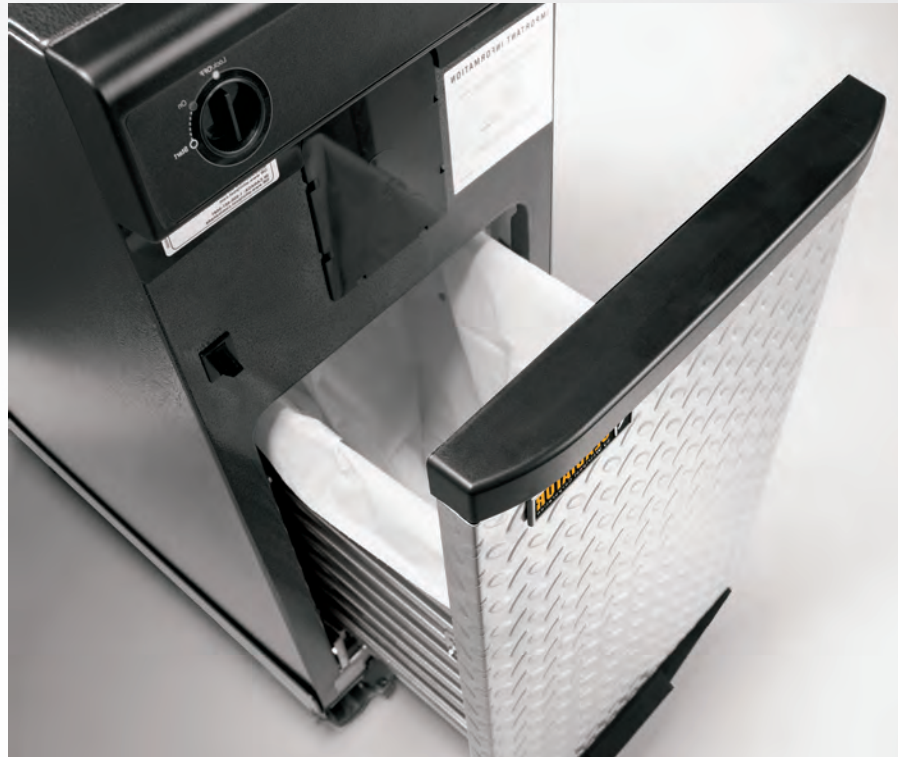
GARF19XXYK

- 19 cu. ft. capacity
- Heavy-duty, solid rubber casters
- Freezer light
- Reversible-swing door
- Keeps internal temperatures consistent even during extreme winter or summer conditions
- 29.75" W x 72.7" H x 32.3" D

Trash Compactor

GACP15XXMG

- 1.4 cu. ft. capacity
- 4-to-1 compaction ratio
- Touch-Toe™ drawer opener
- 15" W x 36.75" H x 24.5" D





TOOL STORAGE

When you're building a tool storage center, Gladiator brand is an ideal choice because of our rugged durability that's backed by a hassle-free lifetime limited warranty.* Protect the hardest-working items in your garage—your tools. They've earned a place of honor.



41" 12-Drawer Roll-Away - GATR4112WG



GladiatorGW.com (7 Reviews) November, 2014

"I like the fact that it came with drawer liners and was completely assembled except for the handle and bumpers."

TOOL STORAGE



A
GearChest

GATC26P8WG

26" W × 18.6" H × 18.5" D

Fits perfectly on a
Premier Series Modular
GearBox or Workbench



B
**6-Drawer
Tool Chest**

GATC26P6WG

26" W × 19" H × 17.1" D

B ▶
C ▶
D ▶

C
**3-Drawer
Intermediate
Chest**

GATC26P3WG

26.5" W × 10.2" H × 17.3" D



D
**7-Drawer
Roll-Away**

GATR27P7WG

27.1" W × 38.8" H × 18.3" D

E ▶
C ▶
F ▶

E
**9-Drawer
Tool Chest**

GATC26V9WG

26" W × 17" H × 12.4" D

UNIVERSAL FEATURES

Hassle-Free Lifetime Limited Warranty* | Smooth Opening Gas Struts | Steel Ball Bearing Slides
Universal Round Key Lock | Cushioned Drawer Liners | Heavy-Duty Casters | Deep Storage Capacity



F
**5-Drawer Base
Tool Chest**

GATR27V5WG

27.1" W × 32.6" H × 18.3" D

G
**41" 10-Drawer
Tool Chest**

GATC4110WG

40.4" W × 19.5" H × 12.4" D

H
**41" 12-Drawer
Roll-Away**

GATR4112WG

41.5" W × 38.8" H × 18.3" D



I
**52" 10-Drawer
Tool Chest**

GATC5210WG

50.9" W × 19.5" H × 17.1" D

J
**52" 10-Drawer
Roll-Away**

GATR5210WG

52" W × 38.8" H × 18.3" D

*For complete product and warranty details visit GladiatorGW.com.



GLADIATOR
By Whirlpool Corporation



FLOORING

Gladiator® floor tiles quickly cover cracks and stains while stylishly finishing off your garage. Our durable tiles support vehicles and other heavy equipment, snap together easily with no adhesives and include a ten-year limited warranty.*

*For complete product and warranty details visit GladiatorGW.com.

FLOORING

UNIVERSAL FEATURES

Hassle-Free 10-Year Limited Warranty | Quick, Easy-Snap Install | Supports Heavy Loads | 12" W x 0.5" H x 12" D
Insulating & Slip-Resistant | Sleek, Finished Style | Convenient Drain Tiles | Stain & Chemical Resistant



Black (24 pack) - GAFT24TTTB

Charcoal (48 pack) - GAFT48TTPC

Silver (48 pack) - GAFT48TTPS

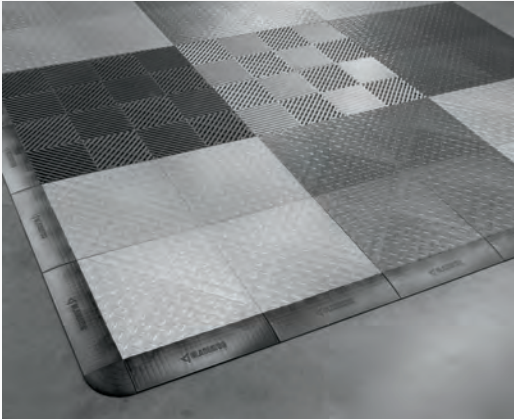
White (24 pack) - GAFT24TTTW

Blue (24 pack) - GAFT24TTTA

Red (48 pack) - GAFT48TTYR

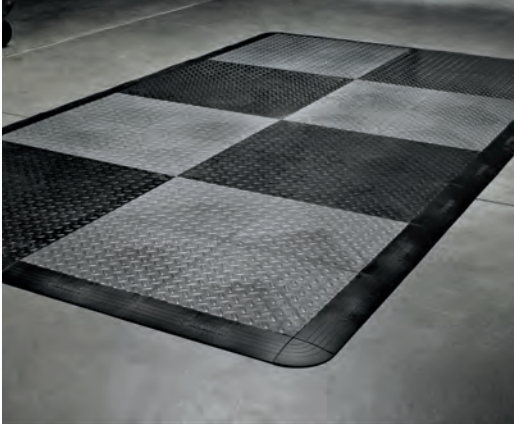
Drain Tile Charcoal (4 pack) - GAFT04DTPC

Drain Tile Silver (4 pack) - GAFT04DTPS



Edge Trim – Male
(6 pack + 1 corner) – GAFA06MEPB

Edge Trim – Female
(6 pack + 1 corner) – GAFA06FEPB



Floor Pack
GAFP32CBZM

Covers 32 sq. ft. of space for you to
showcase your most prized possessions





ACCESSORIES

Gladiator® accessories provide the finishing touches to complete your garage transformation. Our wall systems, bracket and caster kits and wood tops offer endless options to fully personalize your space.

ADDITIONAL ACCESSORIES



Ready-To-Assemble Bracket Kit

GABK362PSS

Hangs a Ready-To-Assemble Large or Extra Tall GearBox on all Gladiator® wall systems



Premier Bracket Kit

GABK301PRS

Hangs a Premier Tall GearLocker or Tall GearBox on all Gladiator® wall systems



Bracket Kit for PrimeTime™ Locker

GABK122PDS

Hangs a Licensed Collegiate PrimeTime™ Locker on all Gladiator® wall systems



27" Bamboo Top

GAAC27BAYX

Turns a Premier Modular GearBox into a mobile workstation



27" Maple Top

GAAC27MTRX

Turns a Premier Modular GearBox into a mobile workstation



28" Bamboo Top

GAAC28BAYX

Turns a Ready-To-Assemble Modular GearBox into a mobile workstation



GearTrack® End Caps

GAACGE4PPM

Snaps onto GearTrack® Channels



GearWall® Panel Trim

GAWT086PBY

Adds a finished look to GearWall® Panels
1.75" W x 96" H x 0.75" D



GearWall® Base Board

GAWT08BTM

Adds a finished look between wall and floor
96" W x 5.875" H x 0.625" D



Color Matched Screws

GAAC0232RY

Color matching creates a seamless look



GearRod Accessory

GAAC36GRDSS

Adds hanging storage to any Jumbo GearBox and holds up to 90 lbs



Ready-To-Assemble Caster Kit

GACK04KDSX

Adds mobility to Ready-To-Assemble Modular GearBoxes



Stool

GAAC30STPB

Double-ring leg construction with a chrome finish



Homes for Our Troops® has handed over the keys to nearly 140 home build projects since 2004. And for the next three years, those homeowners will have the option to receive a complimentary package of Gladiator® products that includes one GearTrack® Pack and a Modular GearBox with 27-inch bamboo top.



 GladiatorGW.com |  facebook.com/gladiatorgw |  twitter.com/gladiatorgw

©™ ©2014 Gladiator. All rights reserved. Printed in the U.S.A. 12/14. Form No. GG140042A

