

# Congoleum®

## COMMERCIAL FLOORING SHEET • TILE

09 65 00/COM  
BuyLine 1787



CONGOLEUM  
  
COMMERCIAL

## COMMERCIAL HETEROGENEOUS SHEET FLOORING



# FLOR-EVER® PLUS

*Flor-Ever Plus with antimicrobial product protection is the perfect flooring choice for both work and living spaces where the performance of a light commercial floor is required.*

- Antimicrobial Protection... contains silver, nature's own antimicrobial protection, encapsulated in a glass matrix to guard the floor against bacteria, mold and mildew.
- Designed to easily coordinate with both commercial and residential interiors.
- A durable wearlayer, fortified with aluminum oxide combined with a tough overall construction, provides superior performance and reduced maintenance.
- Styled and constructed for use in a variety of environments, Flor-Ever Plus is recommended for assisted and retirement living facilities, government housing, student housing, offices, schools, retail shops and main street applications.
- FloorScore certified product for indoor air quality performance.
- Available in 12' widths for reduced seams and installation costs.
- Meets Reference Specification: ASTM F 1303, Type I, Grade 1, Class A backing



## SELECT OAK



51010 PURE OAK



51011 NATURAL OAK



51012 MEDIUM OAK



51013 DARK OAK

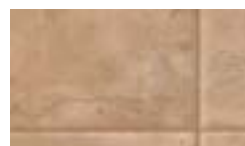
## HIGH SOCIETY



51020 ALFREDO



51021 BISCOTTI



51022 CAPPUCCINO

## BUILDING BLOCKS



51030 COCONUT CREAM



51031 SANDBOX

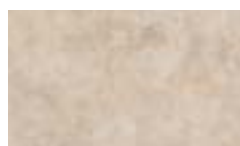


51032 OYSTER SHELL

## METROPOLIS



51040 NEW WHITE



51041 CORNERSTONE BEIGE



51042 MONUMENT GRAY

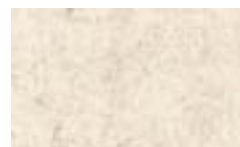


51043 EARTHEN CLAY

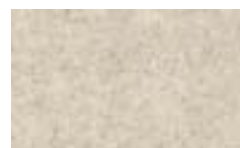
## UPTOWN



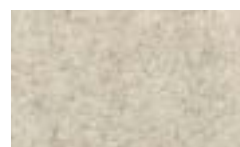
51060 EGGSHELL



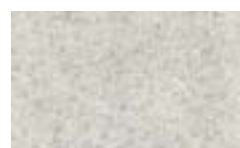
51061 SAND BAR



51062 OATMEAL



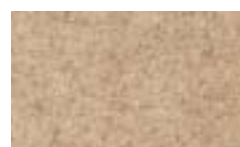
51063 SEAGRASS



51064 PORCELAIN



51065 GRANOLA



51066 SUEDE



51067 BRUSHED PEWTER



51068 MODERN MAUVE

## SLATE WALK



51050 SMOOTH IVORY



51051 RUSTIC BEIGE



51052 NATURAL SLATE

## MAIN STREET



51000 BLONDE



51001 TOAST



51002 NUTMEG



51003 COCOA



## COMMERCIAL INLAID SHEET FLOORING

SPECIFICATIONS<sup>®</sup>

*Specifications is a heavy-duty, inlaid sheet flooring product recommended for most commercial applications.*

- Variable chip size provides unique visual.
- Through-chip inlaid construction for outstanding durability.
- Meets Reference Specification: ASTM F 1303, Type II, Grade 1, Class A backing

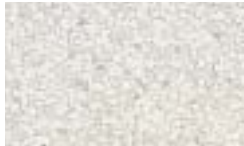
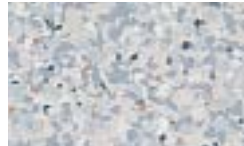
- BAC STOP Protection guards against product discoloration from mold, mildew and alkali.
- FloorScore certified product for indoor air quality performance.
- 6-foot width



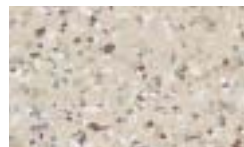
SC100 TRUE MULTI



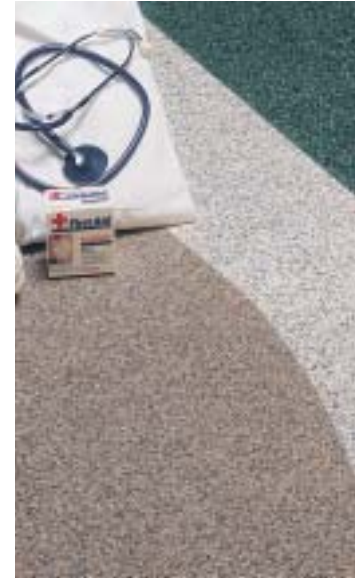
SC115 WHITE/CONFETTI

SC141 BISQUE/PEBBLE  
TAN/ BLUSHSC148 ANTIQUE WHITE/  
ALMONDINE/TEALSC111 COOL WHITE/  
SHELTER WHITE/PEWTERSC119 SHELTER WHITE/  
STERLING/BLUE GRAYSC142 BROWNSTONE/  
CEDAR/GRAYSTONESC159 LIGHT BLUSH/  
WOODROSE/SAPPHIRE

SC112 WHITE/SILVER/BLACK

SC124 SHADOW GRAY/  
BLACK/LINENSC143 WHEAT/CLAY BLUSH/  
AEGEANSC168 DOESKIN/CARAMEL/  
WASHED JADESC114 SHELTER WHITE/  
WASHED BISQUE/BLUSHSC139 STERLING/  
CHARCOAL/SAPPHIRE

SC145 MULTI PEBBLE

SC188 BASIL GREEN/WASHED  
JADE/BROWNSTONESC192 BLUE SKIES/BLACK/  
HAZELNUTFOUNDATIONS<sup>®</sup>

*Foundations is a heavy-duty, inlaid sheet flooring product recommended for most commercial applications.*

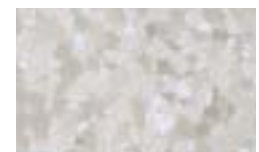
- Through-chip inlaid construction for outstanding durability.
- Meets Reference Specification: ASTM F 1303, Type II, Grade 1, Class A backing
- BAC STOP Protection guards against product discoloration from mold, mildew and alkali.
- FloorScore certified product for indoor air quality performance.
- 6-foot width



C1252 BLACK/WHITE



C1253 WHITE



C1254 MUSHROOM



C1255 PEBBLE



C1257 BLUE/WHITE



C1259 CONFETTI





## COMMERCIAL VINYL COMPOSITION TILE FLOORING



# ALTERNATIVES<sup>®</sup>

*Alternatives, a standard priced commercial tile, is ideally suited for all commercial applications. Alternatives is long-wearing and designed to stand up to heavy traffic.*

- Broad range of commercial colorations.
- Meets Reference Specification: ASTM F 1066, Class 2
- Designed for long wear in heavy traffic areas.
- Resists abrasions and cigarette burns.
- FloorScore certified product for indoor air quality performance.
- Tile size: 12" x 12"
- Gauge: 1/8"



AL-00  
DEEP PURPLE



AL-11  
PEARL WHITE



AL-25  
CONFETTI BLACK



AL-01  
PLUM



AL-13  
HEATHERED STONE BLUE/COFFEE



AL-31  
PEWTER SHADOW



AL-02  
LILAC



AL-15  
HEATHERED ROSE



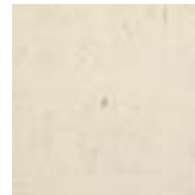
AL-32  
MEDIUM STONE GRAY



AL-37  
PUTTY/CLAY/SIENNA



AL-44  
COFFEE/WALNUT



AL-56  
SOFT SHELL



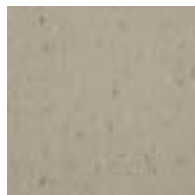
AL-06  
MULTI/DESERT



AL-18  
EMERALD LACE



AL-33  
IRON GRAY



AL-40  
WARM TAUPE



AL-46  
MULTI/CORONADO



AL-59  
CHERRY PEPPER



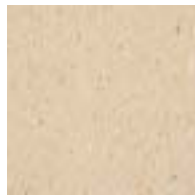
AL-10  
MULTI/BERRY



AL-19  
WHITE/COASTAL



AL-34  
GREIGE/TAUPE



AL-41  
MULTI/TOAST



AL-47  
GOLDEN WHEAT



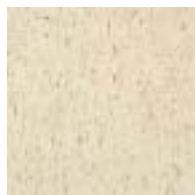
AL-60  
ORANGE GLOW



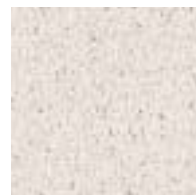
AL-21  
EBONY



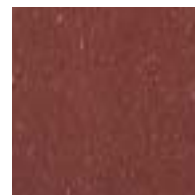
AL-35  
HEATHERED BLUE/ROSE



AL-43  
MUSHROOM



AL-49  
HEATHERED BLUE/MOCHA



AL-64  
SANTA FE CLAY

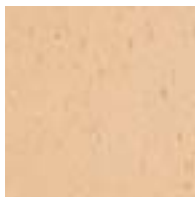


Dark colored patterns are subject to scratch whitening. If used in field areas, more frequent maintenance may be required.

## COMMERCIAL VINYL COMPOSITION TILE FLOORING



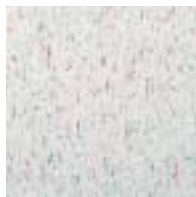
### ALTERNATIVES cont.



AL-65  
LIGHT PUMPKIN



AL-75  
CONFETTI WHITE



AL-80  
LIGHT BERRY BLOSSOM



AL-86  
SPRUCE



AL-90  
HORIZON BLUE



AL-96  
COBALT BLUE



AL-70  
BRILLIANT YELLOW



AL-78  
OLIVE MIST



AL-82  
FOREST GREEN



AL-87  
MULTI/BOTANICAL



AL-91  
CLOUD BLUE



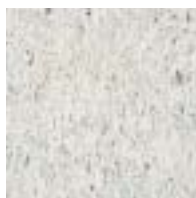
AL-99  
MULTI/NAVY



AL-71  
WASHED CORNSILK



AL-79  
MULTI/SEA



AL-85  
HEATHERED SPRUCE/BLUSH



AL-89  
AQUA SPRING



AL-92  
DENIM

## CHOICES®

*Choices colorations meet the basic design and color requirements for today's commercial projects. Choices, a standard priced commercial floor tile, is long-wearing and designed to stand up to heavy traffic.*

- Meets Reference Specification: ASTM F 1066, Class 2
- Designed for long wear in heavy traffic areas.
- Resists abrasions and cigarette burns.

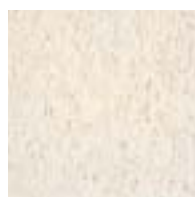
- FloorScore certified product for indoor air quality performance.
- Tile size: 12" x 12"
- Gauge: 1/8"



CH-12  
STONE WHITE



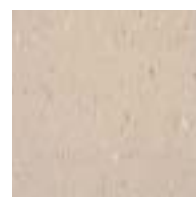
CH-14  
LIGHT PEBBLE BEIGE



CH-17  
ANTIQUÉ WHITE



CH-31  
STEEL



CH-41  
LIGHT EARTHEN TAUPE



CH-47  
MUSHROOM

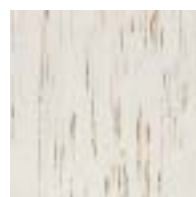
## CX SERIES™

*CX Series is the perfect commercial tile for budget installations that do not require material meeting the gauge requirements of ASTM specifications.*

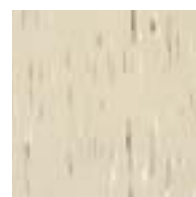
- Designed for long wear in heavy traffic areas.
- Resists abrasions and cigarette burns.
- FloorScore certified product for indoor air quality performance.
- Tile size: 12" x 12"
- Gauge: .100"



CX-12  
WHITE/STEEL



CX-14  
WHITE/LIGHT PEBBLE



CX-47  
EARTHEN BEIGE



CX-91  
WHITE/DEEP BLUE

## COMMERCIAL VINYL COMPOSITION TILE FLOORING



# SELECTIONS®

*Selections is a premium commercial floor tile. Its contemporary monolithic design harmoniously blends with today's commercial environments. It can be used alone or in combination with Special Effects for a customized look.*

- Meets Reference Specification: ASTM F 1066, Class 2
- Designed for long wear in heavy traffic areas.
- Resists abrasions and cigarette burns.
- FloorScore certified product for indoor air quality performance.
- Tile size: 12" x 12"
- Gauge: 1/8"



ST-21  
EBONY



ST-95  
DARK COASTAL BLUE



ST-89  
LIGHT TEAL



ST-46  
LIGHT EARTHEN TAUPE



ST-34  
SAND



ST-35  
SMOKE



ST-31  
LIGHT STEEL



ST-12  
STONE WHITE



ST-43  
MUSHROOM



ST-16  
LIGHT PEBBLE BEIGE



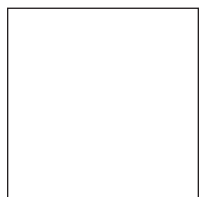
Dark colored patterns are subject to scratch whitening. If used in field areas, more frequent maintenance may be required.



# SPECIAL EFFECTS®

*Special Effects, a premium commercial floor tile, provides unlimited design possibilities. It can be installed with Selections, Choices or Alternatives to create borders and decorative treatments. Special Effects is recommended only for use as an accent to complement other Congoleum commercial tile products.*

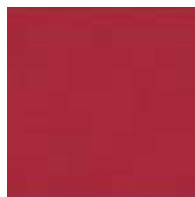
- Bold colorations for innovative flooring designs.
- Meets Reference Specification: ASTM F 1066, Class 1
- Designed for long wear in heavy traffic areas.
- Resists abrasions and cigarette burns.
- FloorScore certified product for indoor air quality performance.
- Tile size: 12" x 12"
- Gauge: 1/8"



SE-11  
WHITE



SE-22  
BLACK



SE-55  
RED



SE-77  
YELLOW



SE-82  
DEEP GREEN




SE-92  
DEEP BLUE



Dark colored patterns are subject to scratch whitening. If used in field areas, more frequent maintenance may be required.

## REFERENCE SPECIFICATIONS

	SHEET			TILE				
	SPECIFICATIONS	FOUNDATIONS	FLOOR-EVER PLUS	CHOICES	ALTERNATIVES	SELECTIONS	SPECIAL EFFECTS	CX SERIES
Approx. Installed Cost Per Square Foot	\$2.75 - \$3.25		\$2.75 - \$3.25	\$1.50 - \$2.00		\$2.00 - \$2.50	\$2.50 - \$3.00	\$ .99 - \$1.50
Colors Available	17	6	30	6	46	10	6	4
Width	6 ft.		12 ft.	12" x 12" (305mm x 305mm)				
Length	Up to 120'			—				
Gauge – Overall	.080" (2.03mm)		.080" nominal (2.03mm)	1/8" (3.2mm)				.100" (2.5mm)
Vinyl Composition Wearlayer	.050" (1.28mm)		—	—				—
Vinyl Wearlayer	—		.020" (.51mm)	—				—
Packing	—			45 pcs. (45 sq. ft.; 4.2 sq. meters)				
REFERENCE SPECIFICATIONS • ASTM F 1303	Type II, Grade 1 Class A backing		Type I, Grade 1 Class A backing	—				
• ASTM F 1066	—			Class 2		Class 1		Class 2***
FIRE TEST DATA • ASTM E 648; NFPA-253; Critical Radiant Flux - 0.45 watts/cm2 or greater	YES							
• ASTM E 662; NFPA-258; NBS Smoke Density - 450 or less	YES							
• D.O.T. Motor Vehicle Safety Standard 302	YES			—				
FloorScore Certified for Indoor Air Quality Performance	YES* 							
Static Load Limit ASTM F 970	500 psi**		175 psi	250 psi				
HUD/FHA Minimum Property Standards	YES						YES***	
Recommended Subfloor	Suspended wood, concrete, all grade levels							
Installation Method	Full Spread							
Recommended Congoleum Adhesive	3044			AD42				
Seam Sealer	SU80 or SU92 Seam Sealer			—				
Heat Weldable Seams	YES	—		—				
Warranty	Five-Year Commercial Limited Warranty							
Durability	Excellent							
Ease of Maintenance	Excellent							

\* FloorScore certified hard surface flooring products are an alternative compliance to LEED credit EQ4.3 Low-Emitting Materials: Carpet Systems.

\*\* Modified ASTM F 970

\*\*\* When .100" gauge is specified.

# COMMERCIAL FLOORING RECOMMENDATIONS

RECOMMENDED APPLICATIONS	SHEET		TILE	RECOMMENDED APPLICATIONS	SHEET		TILE
	SPECIFICATIONS FOUNDATIONS	FLOR-EVER PLUS			SPECIFICATIONS FOUNDATIONS	FLOR-EVER PLUS	
<b>Health Care/Hospitals</b>				<b>Retail</b> cont.			
Cafeteria/Dining Areas	■ 2	●	■ 2	Sales Floor	■	▲	■
Critical Intensive Care	■	●	▲	Specialty Shops	■	▲	■
Corridors	▲	●	■	Supermarket	●	●	■ 5
Dental Offices	■	■ 4	■				
Dialysis	■	■ 4	■	<b>Light Industrial</b>			
Emergency Room Areas	▲	●	▲ 3	Clean Room	■ 3	■ 3	●
Exam/Procedure Rooms	■ 3	▲ 3,4	▲ 3	Production Labs	■ 3,7	■ 3,4,7	■ 3
Laboratories	■ 3,7	▲ 3,4,7	■ 3,7	Research Labs	■ 3,7	■ 3,4,7	■ 3
Nurses Station	■	■	■	Small Parts Assembly	■ 3	■ 3,4	■ 3
Patient Rooms	■	■	■	Sterile Packaging	▲ 3	▲ 3	●
Pharmacy	■	▲	■				
Physician Offices	■	■	■	<b>Hospitality</b>			
Physical Therapy Areas	■ 5	■ 5	■ 5	Corridors	■ 5	●	■ 5
Ramps	●	■	●	Dining Rooms/ Restaurants	■ 2,5	▲ 2,5	■ 2,5
Staff Lounges	■	▲	■	Elevators	■	●	■
Utility/Storage Areas	■	■	■	Guest Bathrooms	■	■	■
Veterinarian	■ 3,7	■ 4	■	Guest Rooms	■	▲	■
Waiting Rooms	■	●	■	Lounges	■	■	■
				Storage Areas	■	■	■
<b>Educational/Institution</b>				Vending Areas	■ 5	■ 5	■ 5
Auditorium	■	●	■	Vestibule/Entryway	▲ 5,6	●	▲ 5,6
Bathrooms	■	●	■				
Cafeteria/Dining Areas	▲ 2	●	■ 2	<b>Assisted Living/ Military Housing</b>			
Classrooms	■	●	■	Activity Rooms/ Common Areas	■	■	■
Commercial Kitchen	●	●	●	Beauty Salon/ Barbershop	■ 7	■ 4,7	■ 7
Corridors	■	■	■	Corridors	▲	▲	■
Dormitory Rooms	■	■	■	Daycare Areas	■	■	■
Entryway	▲ 5	●	▲ 5	Dining Areas	■ 2	■ 2	■ 2
Food Service Areas	▲ 2	●	▲ 2	Physician/Dental Offices	■ 4	■ 4	■ 2
Gymnasium	■	●	■	Residence Bathrooms	■	■	■
Laboratories	■ 7	●	■ 7	Residence Kitchens	■ 2	■ 2	■ 2
Library	■	●	■	Residential Rooms/ Barracks	■	■	■
Lobby	■	●	■				
Locker Room	■ 5	●	▲ 5	<b>Residential Contract</b>			
(No Spikes)	■	■	■	Kitchens/Baths	■	■	■
Utility/Storage Area	■	■	■	Low-Income Housing	■	■	■
				Multi-Unit; Residential Housing	■	■	■
<b>Office</b>				Retirement Communities	■	■	■
Bathrooms	■	■	■				
Cafeteria/Dining Areas	■ 2	▲ 2	■ 2	<b>Other</b>			
Corridors	■	■ 1	■	Ambulance	▲	■ 4	●
Elevators	■	●	■	Museums/Cultural Centers	■	●	■
Lobby	■	■	■	Recreational Vehicles	▲	■	●
Office Conference Rooms	■	■	■	Ships	■	▲	▲
Ramps	●	●	●				
Utility/Storage Rooms	■	■	■				
Vestibule/Entryway	▲ 5,6	●	▲ 5,6				
<b>Retail</b>							
Beauty Salon/ Barbershop	■ 7	■ 4,7	■ 7				
Checkout Areas	▲	●	■				
Food Service Areas	▲ 2	●	▲ 2				

Legend: ■ Highly Recommended ▲ Recommended ● Not Recommended

## Notes:

- 1) 12' widths provide virtually seamless installation.
  - 2) Not recommended for commercial kitchens or food processing areas.
  - 3) Only in areas not requiring conductive or static dissipative flooring.
  - 4) Excellent stain and chemical resistance.
  - 5) Slip resistant polish and/or mats recommended in wet areas.
  - 6) Provided local and federal recommendations are met.
  - 7) Some solutions contain stainants that may permanently damage flooring if not cleaned up immediately. Asphalt driveways, particularly those recently installed or resealed with coal tar, can cause permanent staining in prominent traffic areas. Regular maintenance and floor mats placed at entryways will reduce or eliminate coal tar stains. Congoleum recommends the use of latex emulsion asphalt sealers where possible.
- \* CX Series does not comply with ASTM specifications for gauge requirements.

## Not recommended for:

Automotive maintenance areas  
Automotive showroom unless flooring is protected from oil spills and contact with rubber tires  
Commercial kitchens  
Food processing areas  
Walk-in freezers  
Paint, dye and ink manufacturing facilities  
Outdoor areas exposed to elements  
Ramps  
Walls/Ceilings

**Congoleum**  
CORPORATION

P.O. Box 3127  
Mercerville, NJ 08619  
609-584-3000

www.congoleum.com  
Email: commercial@congoleum.com



sample express  
1-800-934-3567, EXTENSION 180

If you are in a rush for individual samples, call SAMPLE EXPRESS toll-free and we will ship complimentary samples of Congoleum Commercial Flooring to you within 24 hours of your request. It's that easy!



All design illustrations in this book are reproduced as faithfully as fine color engraving and printing will permit. Due to the difference between the printing inks and the pigments used in the manufacture of Congoleum floors, we cannot guarantee exact color reproduction. Ultimate selection should be made from actual samples.

ALTERNATIVES, BAC STOP, CHOICES, CONGOLEUM, FLOR-EVER, FOUNDATIONS, SELECTIONS, SPECIAL EFFECTS, SPECIFICATIONS and WHITE SHIELD are registered trademarks of Congoleum Corporation. CX SERIES and SAMPLE EXPRESS are trademarks of Congoleum Corporation. FloorScore and the FloorScore logo are certification marks of the Resilient Floor Covering Institute. The SCS name, logo and certification emblem are trademarks, service marks and/or certification marks of Scientific Certification Systems, Inc ("SCS").