

WALL PANELS - FLUSH AND REVEAL

PRODUCT FEATURES

- 2 profiles available
- Roll-formed to exact lengths
- Matching "J" trim available
- Corrective leveled for superior flatness
- 20 year non-prorated finish warranty
- Max Panel Length of 25'
- Available with up to 2 stiffener beads
- Rounded interlock leg provides flush fit

MATERIAL

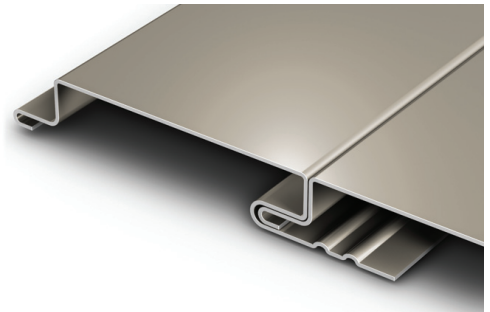
- 37 stocked colors (24 gauge steel)
- 13 stocked colors (22 gauge steel)
- 36 stocked colors (.032 aluminum)
- 18 stocked colors (.040 gauge steel)
- Galvalume Plus available

FLORIDA BUILDING PRODUCT APPROVALS

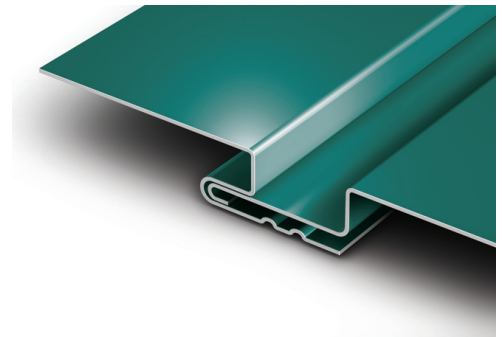
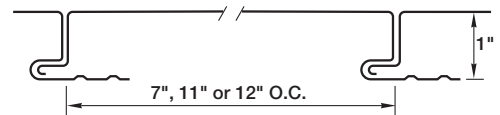
- Flush Panels .032 & .040 Aluminum, 22 & 24 ga. Steel:
FL Prod. Approv #7547

TESTING

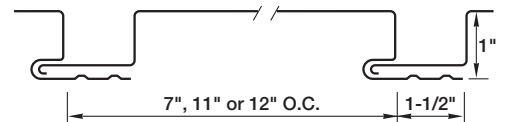
- ASTM E-330 Tested



FLUSH PANEL



REVEAL PANEL



SPECS: 7", 11" OR 12" O.C.
1" HIGH

